



Chipsmall Limited consists of a professional team with an average of over 10 year of expertise in the distribution of electronic components. Based in Hongkong, we have already established firm and mutual-benefit business relationships with customers from,Europe,America and south Asia,supplying obsolete and hard-to-find components to meet their specific needs.

With the principle of “Quality Parts,Customers Priority,Honest Operation,and Considerate Service”,our business mainly focus on the distribution of electronic components. Line cards we deal with include Microchip,ALPS,ROHM,Xilinx,Pulse,ON,Everlight and Freescale. Main products comprise IC,Modules,Potentiometer,IC Socket,Relay,Connector.Our parts cover such applications as commercial,industrial, and automotives areas.

We are looking forward to setting up business relationship with you and hope to provide you with the best service and solution. Let us make a better world for our industry!



Contact us

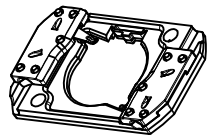
Tel: +86-755-8981 8866 Fax: +86-755-8427 6832

Email & Skype: info@chipsmall.com Web: www.chipsmall.com

Address: A1208, Overseas Decoration Building, #122 Zhenhua RD., Futian, Shenzhen, China

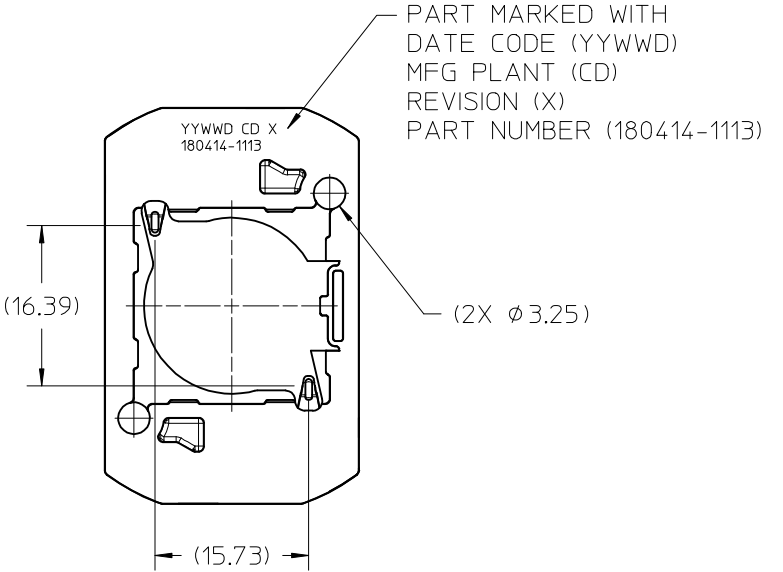
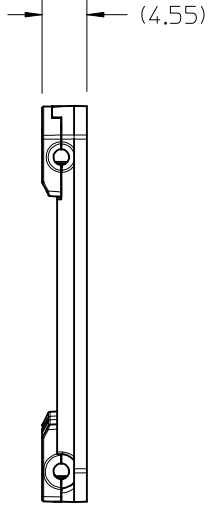
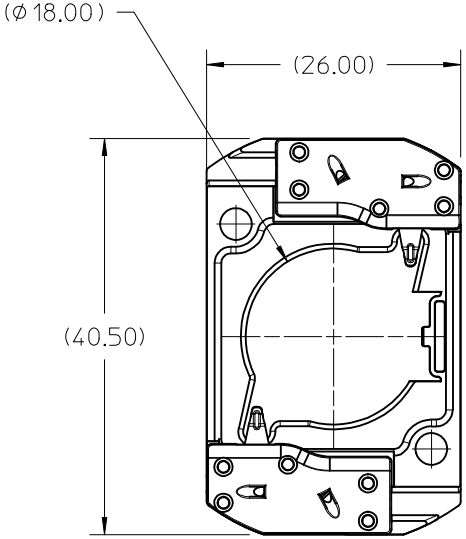


10	9	8	7	6	5	4	3	2	1	
PART NUMBER	DESCRIPTION		POCKET DEPTH	HOUSING	TERMINAL	CAP				
180414-1113	COB LED HOLDER ASSEMBLY		0.90	180413-1113	180155-0133	180154-0105				
180414-2113	COB LED HOLDER ASSEMBLY		0.75	180413-2113	180155-0133	180154-0105				



ISO VIEW 1
SCALE 1:1

P/N 180414-1113 HOLDER ASSEMBLY
(0.90 POCKET DEPTH)



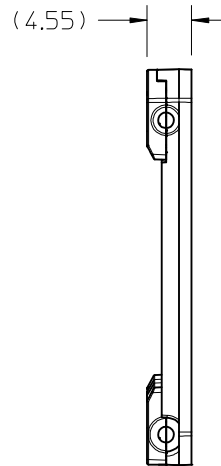
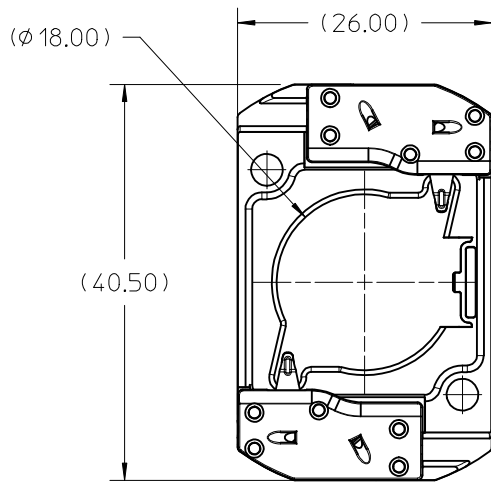
PART MARKED WITH
DATE CODE (YYWWD)
MFG PLANT (CD)
REVISION (X)
PART NUMBER (180414-1113)

- NOTES:
1. MATERIALS: HOUSING AND CAPS: POLYESTER PBT GLASS FILLED; COLOR: WHITE; TERMINAL: COPPER ALLOY
 2. FINISHES: TERMINAL CONTACT: SELECT GOLD OVER NICKEL WIRE TRAP: SELECT TIN OVER NICKEL
 3. PRODUCT SPECIFICATION: 180414-0000-PS
 4. PACKAGING SPECIFICATION: PK-180419-006
 5. UL:OLFB2 UL496 FILE NO. E345583
 6. ELV AND ROHS COMPLIANT
 7. FOR USE WITH: 19.0 MM X 19.0 MM COB LED
 8. WIRE GAUGE: 18, 20, AND 22 AWG, SOLID OR STRANDED WITH TIN OVERCOAT. STRIP LENGTH 10MM +2.0/-0.0MM.
 9. ALL DIMENSIONS IN PARENTHESES (XX.XX) ARE FOR REFERENCE ONLY

ENTER DESCRIPTION EC NO: SSL2017-0024 DRWN:LZABJANOVSKI 2017/02/21 CHKD: APPR:BPISZCZOR 2017/03/07 REV B4	QUALITY SYMBOLS	GENERAL TOLERANCES (UNLESS SPECIFIED)	DIMENSION STYLE	SCALE	DESIGN UNITS	THIRD ANGLE PROJECTION
	$\nabla F/0$ $\nabla F/0$ $\nabla F/0$	mm	MM ONLY	2:1	METRIC	COB LED HOLDER ASSEMBLY 19.0 MM X 19.0 MM SQUARE molex
		INCH	DRAWN BY	DATE	TITLE	
		4 PLACES ± --- ± --- 3 PLACES ± --- ± --- 2 PLACES ± 0.13 ± --- 1 PLACE ± 0.25 ± --- 0 PLACE ± --- ± --- ANGULAR ± 1/2°	MCOLE 2013/12/09 CHECKED BY DATE MCOLE 2013/12/09 APPROVED BY DATE DMCGOWAN 2013/12/09	SD-180414-113 DOCUMENT NO.		
DRAFT WHERE APPLICABLE MUST REMAIN WITHIN DIMENSIONS	SIZE B	SEE CHART	THIS DRAWING CONTAINS INFORMATION THAT IS PROPRIETARY TO MOLEX INCORPORATED AND SHOULD NOT BE USED WITHOUT WRITTEN PERMISSION		SHEET NO. 1 OF 6	

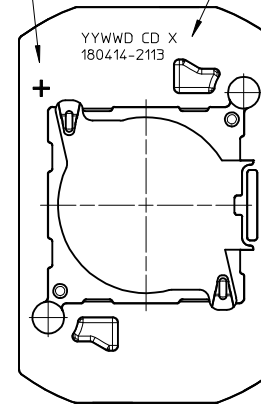
10 9 8 7 6 5 4 3 2 1

P/N 180414-2113 HOLDER ASSEMBLY (0.75 POCKET DEPTH)



PART MARKED WITH
POLARITY SIGN "+"

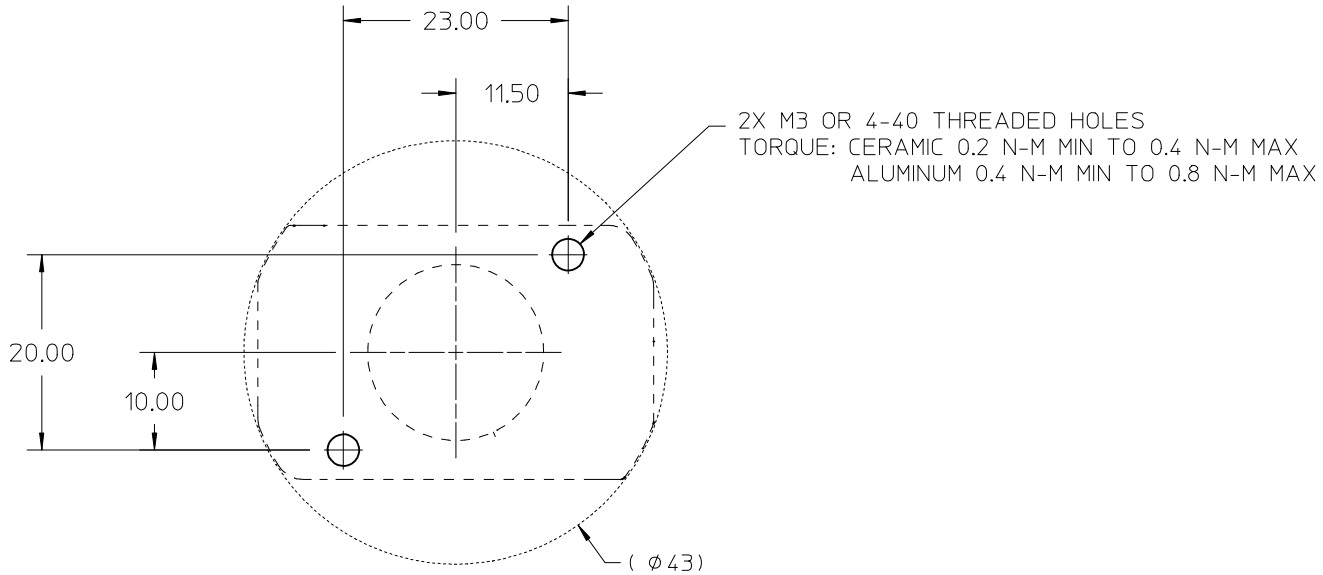
PART MARKED WITH
DATE CODE (YYWWD)
MFG PLANT (CD)
REVISION (X)
PART NUMBER (180414-2113)



ENTER DESCRIPTION EC NO: SSL2017-0024 DRWNL: ZAB.JANOVSKI 2017/02/21 CHKD: APPR: BPT/SZCZOR 2017/03/07 REV: B4	QUALITY SYMBOLS $\nabla F=0$ $\nabla F=0$ $\nabla F=0$	GENERAL TOLERANCES (UNLESS SPECIFIED) mm INCH 4 PLACES ± --- ± --- 3 PLACES ± --- ± --- 2 PLACES ± 0.13 ± --- 1 PLACE ± 0.25 ± --- 0 PLACE ± --- ± --- ANGULAR ± 1/2°	DIMENSION STYLE MM ONLY DRAWN BY DATE MCOLE 2013/12/09 CHECKED BY DATE MCOLE 2013/12/09 APPROVED BY DATE DMCGOWAN 2013/12/09	SCALE 2:1 DESIGN UNITS METRIC THIRD ANGLE PROJECTION	TITLE COB LED HOLDER ASSEMBLY 19.0 MM X 19.0 MM SQUARE molex DOCUMENT NO. SD-180414-113 SHEET NO. 2 OF 6
	DRAFT WHERE APPLICABLE MUST REMAIN WITHIN DIMENSIONS		MATERIAL NO. SEE CHART	THIS DRAWING CONTAINS INFORMATION THAT IS PROPRIETARY TO MOLEX INCORPORATED AND SHOULD NOT BE USED WITHOUT WRITTEN PERMISSION	

9 8 7 6 5 4 3 2 1

10 9 8 7 6 5 4 3 2 1



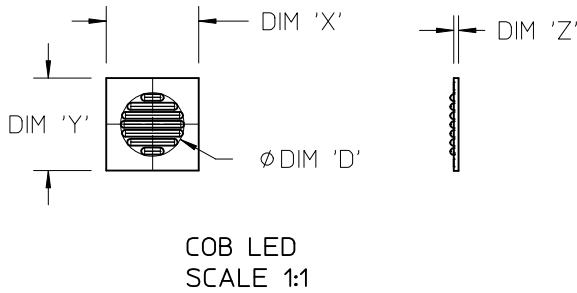
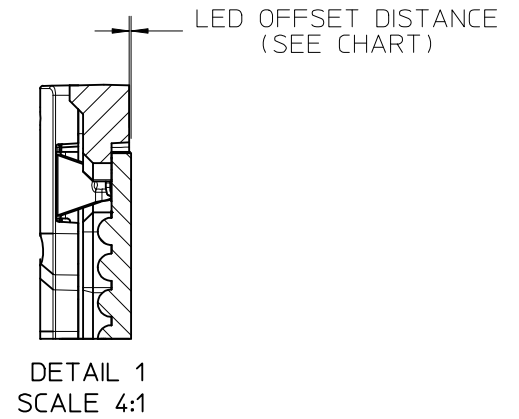
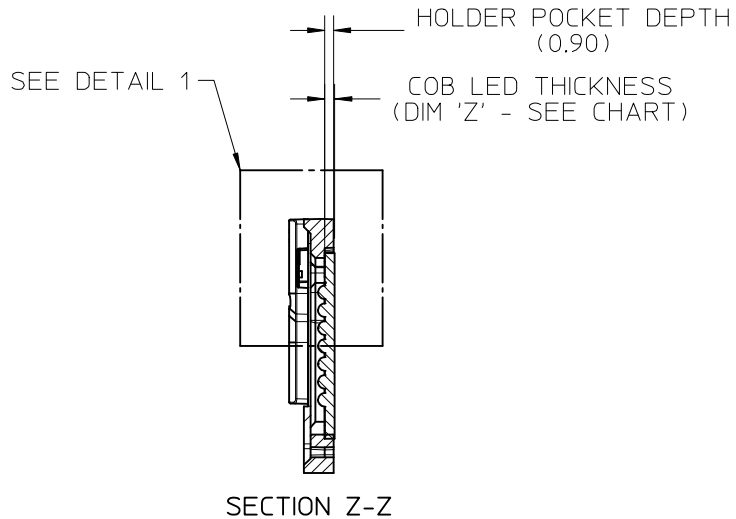
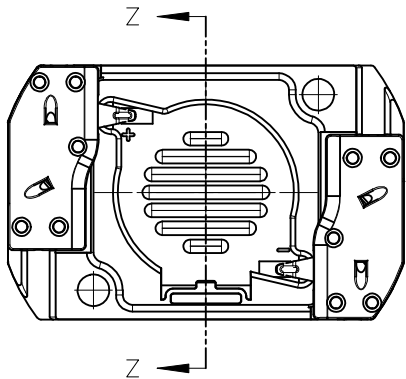
RECOMMENDED MOUNTING DIMENSIONIS

ENTER DESCRIPTION EC NO: SSL2017-0024 DRWNL:ZAB.JANOVSKI 2017/02/21 CHKD: APPR:BPISZCZOR 2017/03/07 REV B4	QUALITY SYMBOLS	GENERAL TOLERANCES (UNLESS SPECIFIED)	DIMENSION STYLE MM ONLY		SCALE 2:1	DESIGN UNITS METRIC	THIRD ANGLE PROJECTION
	$\nabla F/0$	mm INCH	DRAWN BY	DATE	TITLE COB LED HOLDER ASSEMBLY 19.0 MM X 19.0 MM SQUARE		
	$\nabla F/0$	4 PLACES \pm --- \pm ---	MCOLE	2013/12/09			
	$\nabla F/0$	3 PLACES \pm --- \pm ---	CHECKED BY	DATE	DOCUMENT NO. SD-180414-113		
$\nabla F/0$	2 PLACES \pm 0.13 \pm ---	MCOLE	2013/12/09				
		1 PLACE \pm 0.25 \pm ---	APPROVED BY	DATE	SHEET NO. 3 OF 6		
		0 PLACE \pm --- \pm ---	DMCGOWAN	2013/12/09			
		ANGULAR \pm 1/2°	MATERIAL NO.		THIS DRAWING CONTAINS INFORMATION THAT IS PROPRIETARY TO MOLEX INCORPORATED AND SHOULD NOT BE USED WITHOUT WRITTEN PERMISSION		
		DRAFT WHERE APPLICABLE MUST REMAIN WITHIN DIMENSIONS	SEE CHART				

9 8 7 6 5 4 3 2 1

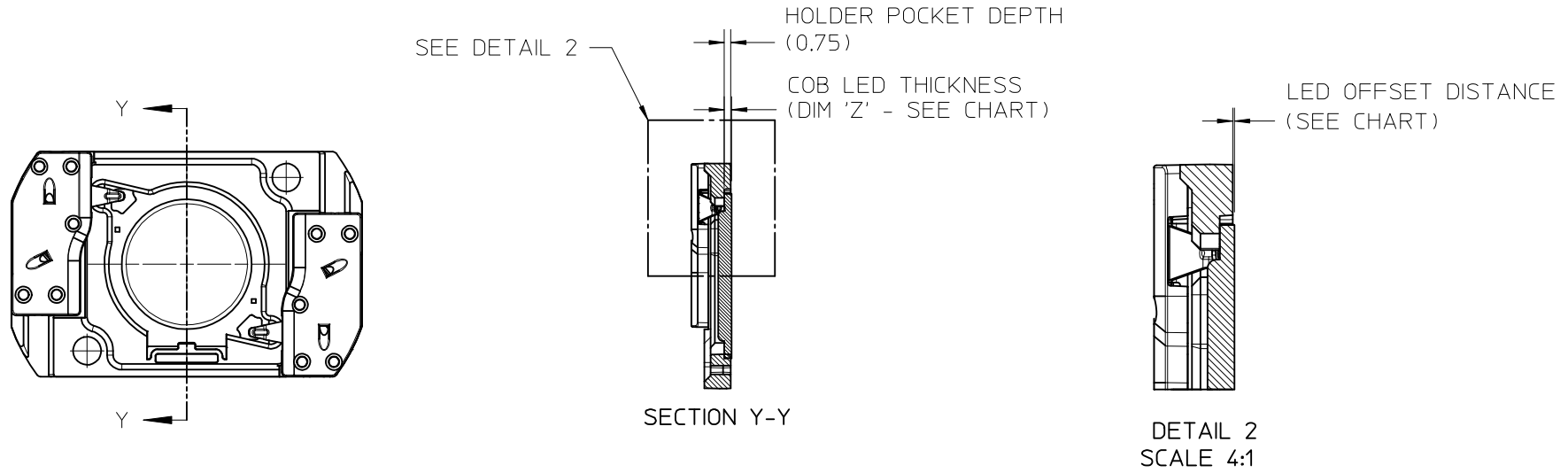
10	9	8	7	6	5	4	3	2	1
COB MFG	TYPE		DIM 'X'	DIM 'Y'	DIM 'Z'	DIM 'D'	OFFSET		
VOSSLOH-SCHWABE	DMC114C		19.0	19.0	1.0	11.9	0.10		
VOSSLOH-SCHWABE	DMC124***F, DMC125***F		19.0	19.0	1.0	13.1	0.10		
VOSSLOH-SCHWABE	DMC125C		19.0	19.0	1.0	13.1	0.10		
VOSSLOH-SCHWABE	DMC128***F		19.0	19.0	1.0	15.8	0.10		

ILLUSTRATION OF P/N 180414-1113 HOLDER MATED WITH LED



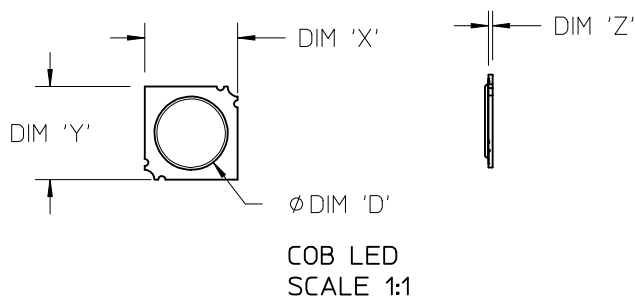
ENTER DESCRIPTION EC NO: SSL2017-0024 DRWNL:ZAB.JANOVSKI 2017/02/21 CHKD: APPR:BPISZCZOR 2017/03/07 B4	QUALITY SYMBOLS ▽/0 ▽/0 ▽/0	GENERAL TOLERANCES (UNLESS SPECIFIED)		DIMENSION STYLE MM ONLY		SCALE 2:1	DESIGN UNITS METRIC	THIRD ANGLE PROJECTION		
		4 PLACES	± ---	± ---	DRAWN BY	DATE	TITLE COB LED HOLDER ASSEMBLY 19.0 MM X 19.0 MM SQUARE			
		3 PLACES	± ---	± ---	MCOLE	2013/12/09				
		2 PLACES	± 0.13	± ---	CHECKED BY	DATE	molex			
1 PLACE	± 0.25	± ---	MCOLE	2013/12/09						
0 PLACE	± ---	± ---	APPROVED BY	DATE	MATERIAL NO. SEE CHART		DOCUMENT NO. SD-180414-113	SHEET NO. 4 OF 6		
ANGULAR ±1/2° DRAFT WHERE APPLICABLE MUST REMAIN WITHIN DIMENSIONS		THIS DRAWING CONTAINS INFORMATION THAT IS PROPRIETARY TO MOLEX INCORPORATED AND SHOULD NOT BE USED WITHOUT WRITTEN PERMISSION								

ILLUSTRATION OF P/N 180414-2113 HOLDER MATED WITH LED



ENTER DESCRIPTION EC NO: SSL2017-0024 DRWNL:ZAB.JANOVSKI 2017/02/21 CHKD: APPR:BPISZCZOR 2017/03/07	QUALITY SYMBOLS	GENERAL TOLERANCES (UNLESS SPECIFIED)		DIMENSION STYLE MM ONLY		SCALE 2:1	DESIGN UNITS METRIC	THIRD ANGLE PROJECTION	
	$\nabla = 0$	mm	INCH	DRAWN BY	DATE	TITLE COB LED HOLDER ASSEMBLY 19.0 MM X 19.0 MM SQUARE			
	$\nabla = 0$	4 PLACES ± ---	± ---	MCOLE	2013/12/09				
	$\nabla = 0$	3 PLACES ± ---	± ---	CHECKED BY	DATE	MATERIAL NO. SEE CHART			
$\nabla = 0$	2 PLACES ± 0.13	± ---	MCOLE	2013/12/09					
$\nabla = 0$	1 PLACE ± 0.25	± ---	APPROVED BY	DATE	DOCUMENT NO.		SHEET NO. 5 OF 6		
$\nabla = 0$	0 PLACE ± ---	± ---	DMCGOWAN	2013/12/09	SD-180414-113				
B4	REV	ANGULAR ± 1/2°		DRAFT WHERE APPLICABLE MUST REMAIN WITHIN DIMENSIONS		THIS DRAWING CONTAINS INFORMATION THAT IS PROPRIETARY TO MOLEX INCORPORATED AND SHOULD NOT BE USED WITHOUT WRITTEN PERMISSION			

COB MFG	TYPE	DIM 'X'	DIM 'Y'	DIM 'Z'	DIM 'D'	OFFSET
CITIZEN	CLL030, CLL032, CLU034, CLU036, CLU038	19.0	19.0	0.90	17.0	0.15
SEOUL	ZC12, ZC18	19.0	19.0	0.90	16.0	0.15
TRIDONIC	SLE G5 LES15	19.0	19.0	0.90	15.0	0.15
CITIZEN	CLU720, CLU721	19.0	19.0	0.90	13.5	0.15
EVERLIGHT	EAHP1919WA*, EAHP1919WB*, EAHP1919WC*	19.0	19.0	0.90	15.5	0.15
EVERLIGHT	EA1919 36V/16W	19.0	19.0	0.90	15.5	0.15
EVERLIGHT	EA1919 36V/19W	19.0	19.0	0.90	15.5	0.15
EVERLIGHT	EA1919 36V/26W	19.0	19.0	0.90	15.5	0.15
VOSSLOH-SCHWABE	DMC114C	19.0	19.0	1.00	11.9	0.25
VOSSLOH-SCHWABE	DMC124***F, DMC125***F	19.0	19.0	1.00	13.1	0.25
VOSSLOH-SCHWABE	DMC125C	19.0	19.0	1.00	13.1	0.25
VOSSLOH-SCHWABE	DMC128***F	19.0	19.0	1.00	15.8	0.25
BRIDGELUX	H15	19.0	19.0	1.10	16.5	0.35



ENTER DESCRIPTION EC NO: SSL2017-0024 DRWNL:ZABJANOVSKI 2017/02/21 CHKD: APPR:BPISZCZOR 2017/03/07 REV	QUALITY SYMBOLS	GENERAL TOLERANCES (UNLESS SPECIFIED)		DIMENSION STYLE MM ONLY		SCALE 2:1	DESIGN UNITS METRIC	THIRD ANGLE PROJECTION		
	▼=0 ▽=0	4 PLACES	mm	INCH	DRAWN BY	DATE	TITLE COB LED HOLDER ASSEMBLY 19.0 MM X 19.0 MM SQUARE			
		3 PLACES	± ---	± ---	MCOLE	2013/12/09				
		2 PLACES	± 0.13	± ---	CHECKED BY	DATE	molex			
		1 PLACE	± 0.25	± ---	MCOLE	2013/12/09				
0 PLACE		± ---	± ---	APPROVED BY	DATE	DOCUMENT NO.				
ANGULAR ±1/2°		MATERIAL NO.		SEE CHART		SD-180414-113		6 OF 6		
DRAFT WHERE APPLICABLE MUST REMAIN WITHIN DIMENSIONS		SIZE B		THIS DRAWING CONTAINS INFORMATION THAT IS PROPRIETARY TO MOLEX INCORPORATED AND SHOULD NOT BE USED WITHOUT WRITTEN PERMISSION						