



Chipsmall Limited consists of a professional team with an average of over 10 year of expertise in the distribution of electronic components. Based in Hongkong, we have already established firm and mutual-benefit business relationships with customers from,Europe,America and south Asia,supplying obsolete and hard-to-find components to meet their specific needs.

With the principle of "Quality Parts,Customers Priority,Honest Operation,and Considerate Service",our business mainly focus on the distribution of electronic components. Line cards we deal with include Microchip,ALPS,ROHM,Xilinx,Pulse,ON,Everlight and Freescale. Main products comprise IC,Modules,Potentiometer,IC Socket,Relay,Connector.Our parts cover such applications as commercial,industrial, and automotives areas.

We are looking forward to setting up business relationship with you and hope to provide you with the best service and solution. Let us make a better world for our industry!



Contact us

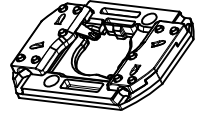
Tel: +86-755-8981 8866 Fax: +86-755-8427 6832

Email & Skype: info@chipsmall.com Web: www.chipsmall.com

Address: A1208, Overseas Decoration Building, #122 Zhenhua RD., Futian, Shenzhen, China

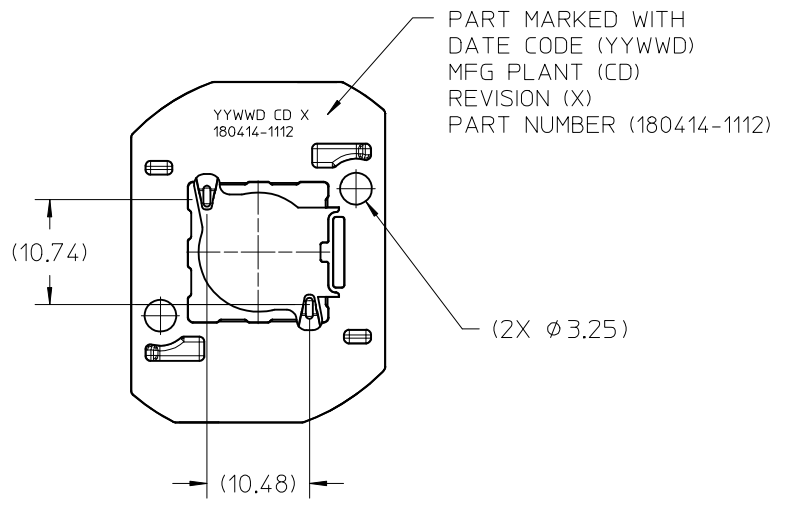
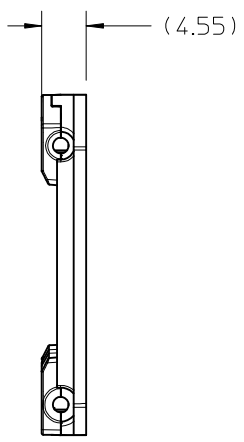
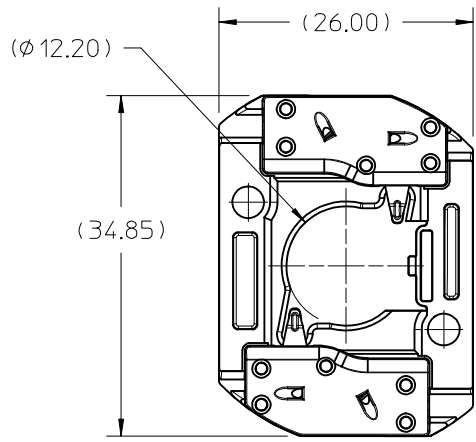


10	9	8	7	6	5	4	3	2	1
PART NUMBER	DESCRIPTION		POCKET DEPTH	HOUSING	TERMINAL	CAP			
180414-1112	COB LED HOLDER ASSEMBLY		0.90	180413-1112	180155-0133	180154-0105			
180414-2112	COB LED HOLDER ASSEMBLY		0.75	180413-2112	180155-0133	180154-0105			



ISO VIEW 1
SCALE 1:1

P/N 180414-1112 HOLDER ASSEMBLY
(0.90 POCKET DEPTH)

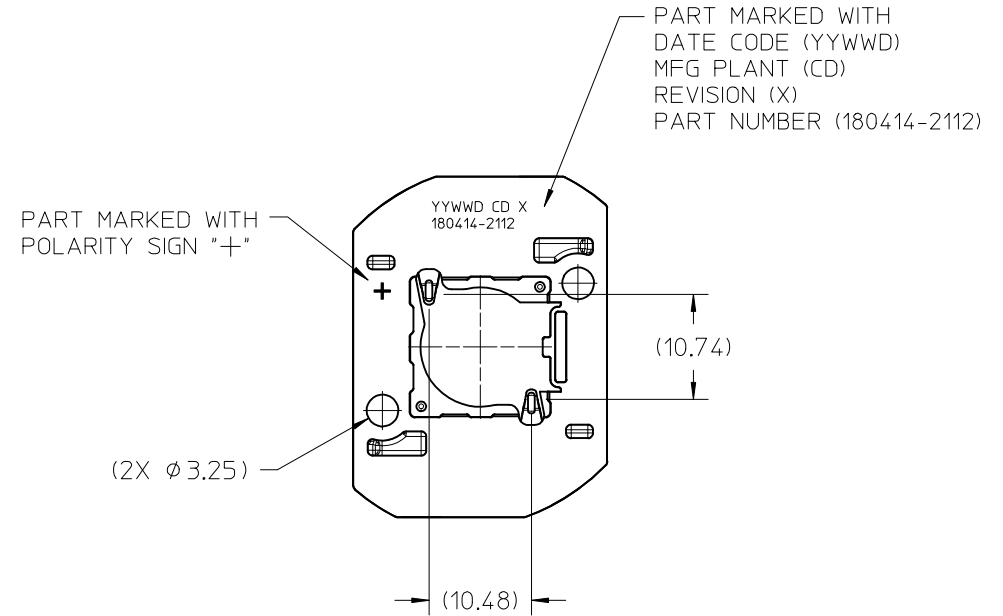
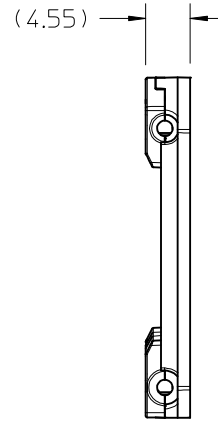
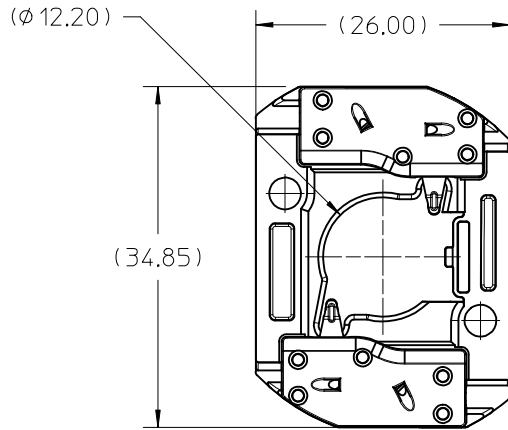


- NOTES:
1. MATERIALS: HOUSING AND CAPS: POLYESTER PBT GLASS FILLED; COLOR: WHITE; TERMINAL: COPPER ALLOY
 2. FINISHES: TERMINAL CONTACT: SELECT GOLD OVER NICKEL WIRE TRAP: SELECT TIN OVER NICKEL
 3. PRODUCT SPECIFICATION: 180414-0000-PS
 4. PACKAGING SPECIFICATION: PK-180419-005
 5. UL:OLFB2 UL496 FILE NO. E345583
 6. ELV AND ROHS COMPLIANT
 7. FOR USE WITH: 13.5 MM X 13.5 MM COB LED
 8. WIRE GAUGE: 18, 20, AND 22 AWG, SOLID OR STRANDED WITH TIN OVERCOAT. STRIP LENGTH 10MM +2.0/-0.0MM.
 9. ALL DIMENSIONS IN PARENTHESES (XX.XX) ARE FOR REFERENCE ONLY

ENTER DESCRIPTION EC NO: SSL2017-0024 DRAWN: ZABJANOVSKI 2017/02/21 CHKD: APPR: BPI/SZOR 2017/03/07 REV C4	QUALITY SYMBOLS	GENERAL TOLERANCES (UNLESS SPECIFIED)	DIMENSION STYLE	SCALE	DESIGN UNITS	THIRD ANGLE PROJECTION	
	$\nabla = 0$ $\nabla = 0$ $\nabla = 0$	mm	MM ONLY	2:1	METRIC	COB LED HOLDER ASSEMBLY 13.5 MM X 13.5 MM SQUARE molex	
		INCH	MATERIAL NO.	DRAWN BY	DATE		TITLE
		4 PLACES ± --- ± --- 3 PLACES ± --- ± --- 2 PLACES ± 0.13 ± --- 1 PLACE ± 0.25 ± --- 0 PLACE ± --- ± --- ANGULAR ± 1/2°	DRAWN BY MCOLE DATE 2013/12/09 CHECKED BY DATE 2013/12/09 APPROVED BY DMCGOWAN DATE 2013/12/09	DOCUMENT NO. SD-180414-112 SHEET NO. 1 OF 5			
DRAFT WHERE APPLICABLE MUST REMAIN WITHIN DIMENSIONS	SEE CHART	THIS DRAWING CONTAINS INFORMATION THAT IS PROPRIETARY TO MOLEX INCORPORATED AND SHOULD NOT BE USED WITHOUT WRITTEN PERMISSION					

10 9 8 7 6 5 4 3 2 1

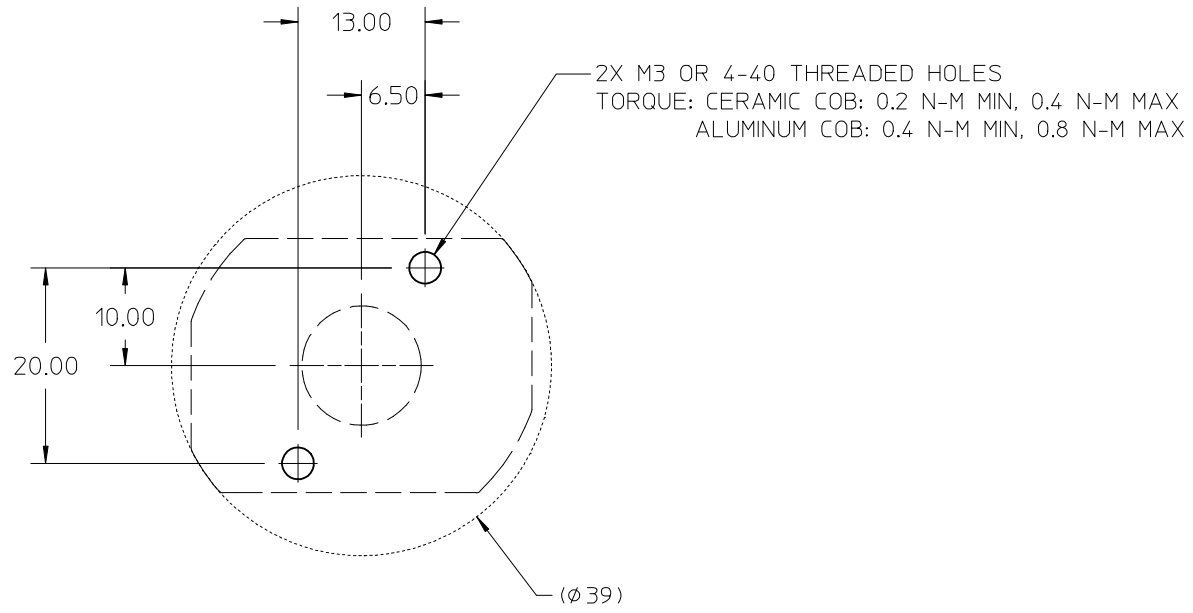
P/N 180414-2112 HOLDER ASSEMBLY (0.75 POCKET DEPTH)



ENTER DESCRIPTION EC NO: SSL2017-0024 DRWNL:ZABJANOVSKI 2017/02/21 CHKD: APPR:BPISZCZOR 2017/03/07 REV C4	QUALITY SYMBOLS $\nabla F=0$ $\nabla F=0$ $\nabla F=0$	GENERAL TOLERANCES (UNLESS SPECIFIED) <table border="1"> <thead> <tr> <th></th> <th>mm</th> <th>INCH</th> </tr> </thead> <tbody> <tr> <td>4 PLACES</td> <td>± ---</td> <td>± ---</td> </tr> <tr> <td>3 PLACES</td> <td>± ---</td> <td>± ---</td> </tr> <tr> <td>2 PLACES</td> <td>± 0.13</td> <td>± ---</td> </tr> <tr> <td>1 PLACE</td> <td>± 0.25</td> <td>± ---</td> </tr> <tr> <td>0 PLACE</td> <td>± ---</td> <td>± ---</td> </tr> </tbody> </table>		mm	INCH	4 PLACES	± ---	± ---	3 PLACES	± ---	± ---	2 PLACES	± 0.13	± ---	1 PLACE	± 0.25	± ---	0 PLACE	± ---	± ---	DIMENSION STYLE MM ONLY DRAWN BY: MCOLE DATE: 2013/12/09 CHECKED BY: MCOLE DATE: 2013/12/09 APPROVED BY: DMCGOWAN DATE: 2013/12/09 MATERIAL NO.	SCALE: 2:1 DESIGN UNITS: METRIC THIRD ANGLE PROJECTION	TITLE: COB LED HOLDER ASSEMBLY 13.5 MM X 13.5 MM SQUARE molex DOCUMENT NO. SD-180414-112 SHEET NO. 2 OF 5
		mm	INCH																				
	4 PLACES	± ---	± ---																				
	3 PLACES	± ---	± ---																				
	2 PLACES	± 0.13	± ---																				
1 PLACE	± 0.25	± ---																					
0 PLACE	± ---	± ---																					
DRAFT WHERE APPLICABLE MUST REMAIN WITHIN DIMENSIONS		SEE CHART SIZE B	THIS DRAWING CONTAINS INFORMATION THAT IS PROPRIETARY TO MOLEX INCORPORATED AND SHOULD NOT BE USED WITHOUT WRITTEN PERMISSION																				

9 8 7 6 5 4 3 2 1

10 9 8 7 6 5 4 3 2 1



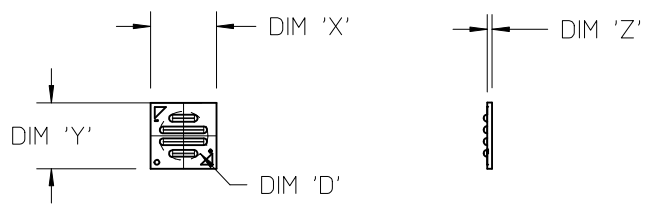
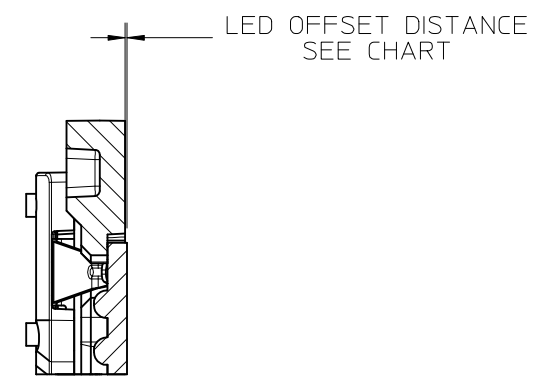
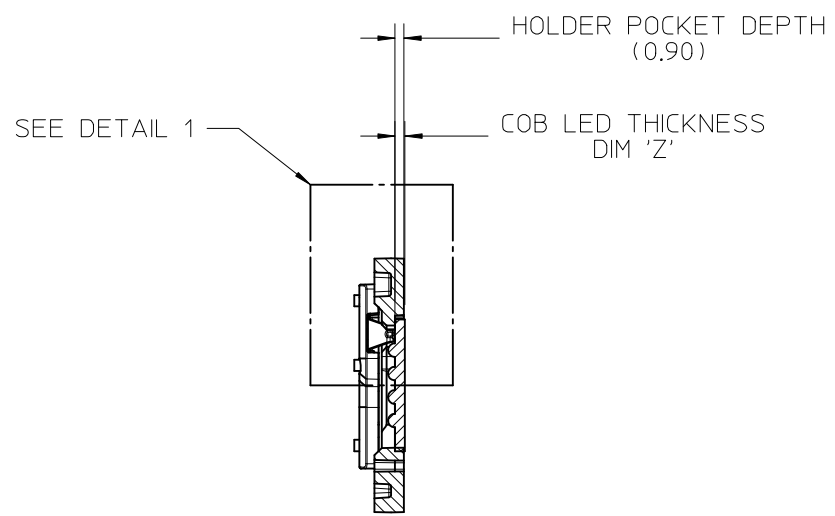
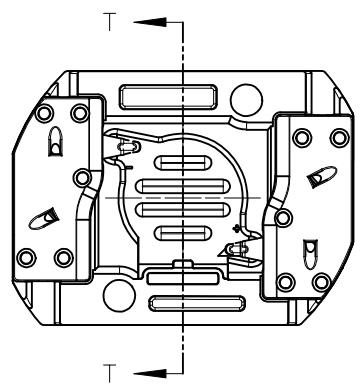
RECOMMENDED MOUNTING DIMENSIONS

ENTER DESCRIPTION EC NO: SSL2017-0024 DRWNL: ZABJANOVSKI 2017/02/21 CHKD: APPR: BPISZCZOR 2017/03/07 REV	QUALITY SYMBOLS	GENERAL TOLERANCES (UNLESS SPECIFIED)	DIMENSION STYLE MM ONLY		SCALE 2:1	DESIGN UNITS METRIC	THIRD ANGLE PROJECTION
	$\nabla F=0$	mm INCH	DRAWN BY	DATE	TITLE COB LED HOLDER ASSEMBLY 13.5 MM X 13.5 MM SQUARE		
	$\nabla F=0$	4 PLACES ± --- ± ---	MCOLE	2013/12/09			
	$\nabla F=0$	3 PLACES ± --- ± ---	CHECKED BY	DATE	molex		
$\nabla F=0$	2 PLACES ± 0.13 ± ---	MCOLE	2013/12/09				
	1 PLACE ± 0.25 ± ---	APPROVED BY	DATE	DOCUMENT NO.		SHEET NO.	
	0 PLACE ± --- ± ---	DMCGOWAN	2013/12/09	SD-180414-112		3 OF 5	
C4		ANGULAR ± 1/2°	MATERIAL NO.		THIS DRAWING CONTAINS INFORMATION THAT IS PROPRIETARY TO MOLEX INCORPORATED AND SHOULD NOT BE USED WITHOUT WRITTEN PERMISSION		
		DRAFT WHERE APPLICABLE MUST REMAIN WITHIN DIMENSIONS	SEE CHART				

9 8 7 6 5 4 3 2 1

10	9	8	7	6	5	4	3	2	1
COB MFG	TYPE	DIM 'X'	DIM 'Y'	DIM 'Z'	DIM 'D'	OFFSET			
VOSSLOH-SCHWABE	DMC122C	13.5	13.5	1.0	10.0	0.10			

ILLUSTRATION OF P/N 180414-1112 HOLDER MATED WITH LED



COB LED
SCALE 1:1

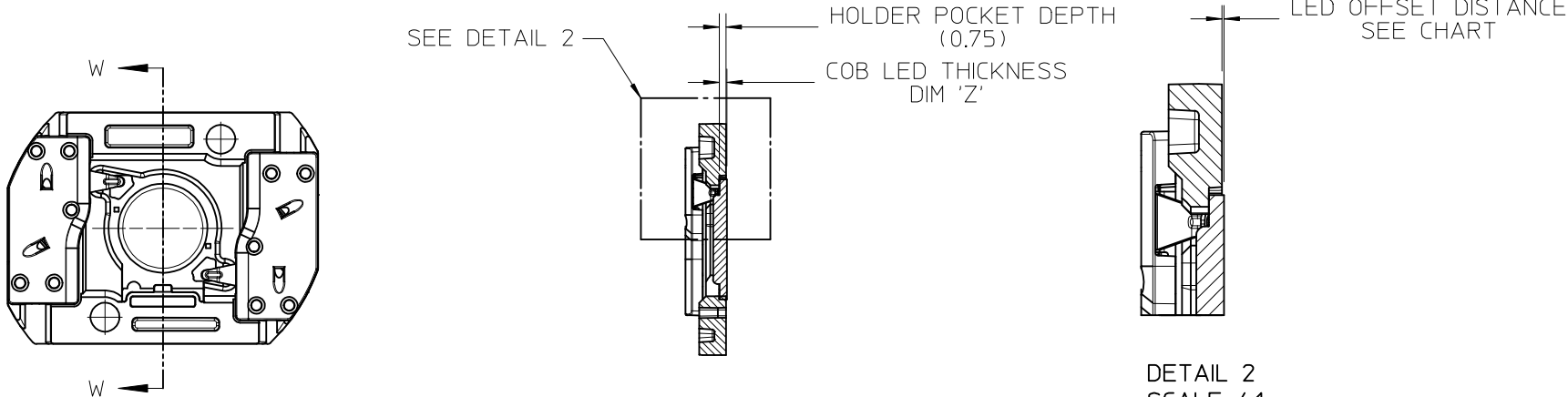
SECTION T-T

DETAIL 1
SCALE 4:1

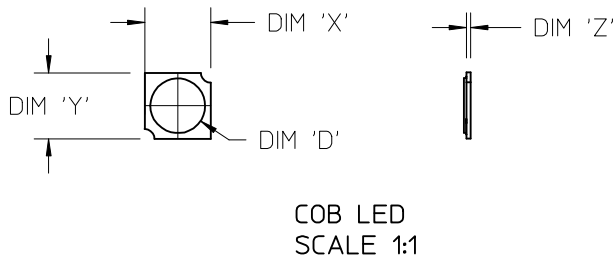
ENTER DESCRIPTION EC NO: SSL2017-0024 DRWNL:ZAB.JANOVSKI 2017/02/21 CHKD: APPR:BP1SZCZOR 2017/03/07 C4	QUALITY SYMBOLS 	GENERAL TOLERANCES (UNLESS SPECIFIED)		DIMENSION STYLE MM ONLY		SCALE 2:1	DESIGN UNITS METRIC	THIRD ANGLE PROJECTION		
		4 PLACES	± ---	± ---	DRAWN BY	DATE	TITLE COB LED HOLDER ASSEMBLY 13.5 MM X 13.5 MM SQUARE			
		3 PLACES	± ---	± ---	MCOLE	2013/12/09				
		2 PLACES	± 0.13	± ---	CHECKED BY	DATE				
		1 PLACE	± 0.25	± ---	MCOLE	2013/12/09				
0 PLACE	± ---	± ---	APPROVED BY	DATE	SEE CHART		DOCUMENT NO. SD-180414-112	SHEET NO. 4 OF 5		
ANGULAR ±1/2°		DRAFT WHERE APPLICABLE MUST REMAIN WITHIN DIMENSIONS		MATERIAL NO.	THIS DRAWING CONTAINS INFORMATION THAT IS PROPRIETARY TO MOLEX INCORPORATED AND SHOULD NOT BE USED WITHOUT WRITTEN PERMISSION					

10	9	8	7	6	5	4	3	2	1
COB MFG	TYPE			DIM 'X'	DIM 'Y'	DIM 'Z'	DIM 'D'	OFFSET	
CITIZEN	CLL020, CLL022, CLU024, CLU026, CLU028			13.5	13.5	0.90	11.2	0.15	
SEOUL	ZC6			13.5	13.5	0.90	10.0	0.15	
TRIDONIC	SLE G5 LES10			13.5	13.5	0.90	9.4	0.15	
CITIZEN	CLU025, CLU027			13.5	13.5	0.90	7.4	0.15	
CITIZEN	CLU700, CLU701			13.5	13.5	0.90	7.8	0.15	
EVERLIGHT	EAHP1313WA*, EAHP1313WB*, EAHP1313WC*			13.5	13.5	0.90	10.8	0.15	
EVERLIGHT	EA1313 36V/3W			13.5	13.5	0.90	10.8	0.15	
EVERLIGHT	EA1313 36V/6W			13.5	13.5	0.90	10.8	0.15	
EVERLIGHT	EA1313 36V/10W			13.5	13.5	0.90	10.8	0.15	
EVERLIGHT	EA1313 36V/13W			13.5	13.5	0.90	10.8	0.15	
VOSSLOH-SCHWABE	DMC122C			13.5	13.5	1.00	10.0	0.25	

ILLUSTRATION OF P/N 180414-2112 HOLDER MATED WITH LED



SECTION W-W



ENTER DESCRIPTION EC NO: SSL2017-0024 DRWNL:ZAB, JANOVSKI 2017/02/21 CHKD: APPR:BP1SZCZOR 2017/03/07 REV C4	QUALITY SYMBOLS $\nabla F/0$ $\nabla F/0$ $\nabla F/0$	GENERAL TOLERANCES (UNLESS SPECIFIED)		DIMENSION STYLE MM ONLY		SCALE 2:1	DESIGN UNITS METRIC	THIRD ANGLE PROJECTION		
		4 PLACES	± ---	± ---	DRAWN BY	DATE	TITLE COB LED HOLDER ASSEMBLY 13.5 MM X 13.5 MM SQUARE			
		3 PLACES	± ---	± ---	MCOLE	2013/12/09				
		2 PLACES	± 0.13	± ---	CHECKED BY	DATE				
1 PLACE	± 0.25	± ---	MCOLE	2013/12/09						
0 PLACE	± ---	± ---	APPROVED BY	DATE	DOCUMENT NO. SD-180414-112		SHEET NO. 5 OF 5			
ANGULAR ±1/2°			MATERIAL NO.		SEE CHART					
DRAFT WHERE APPLICABLE MUST REMAIN WITHIN DIMENSIONS					THIS DRAWING CONTAINS INFORMATION THAT IS PROPRIETARY TO MOLEX INCORPORATED AND SHOULD NOT BE USED WITHOUT WRITTEN PERMISSION					