



Chipsmall Limited consists of a professional team with an average of over 10 year of expertise in the distribution of electronic components. Based in Hongkong, we have already established firm and mutual-benefit business relationships with customers from,Europe,America and south Asia,supplying obsolete and hard-to-find components to meet their specific needs.

With the principle of “Quality Parts,Customers Priority,Honest Operation,and Considerate Service”,our business mainly focus on the distribution of electronic components. Line cards we deal with include Microchip,ALPS,ROHM,Xilinx,Pulse,ON,Everlight and Freescale. Main products comprise IC,Modules,Potentiometer,IC Socket,Relay,Connector.Our parts cover such applications as commercial,industrial, and automotives areas.

We are looking forward to setting up business relationship with you and hope to provide you with the best service and solution. Let us make a better world for our industry!



## Contact us

Tel: +86-755-8981 8866 Fax: +86-755-8427 6832

Email & Skype: info@chipsmall.com Web: www.chipsmall.com

Address: A1208, Overseas Decoration Building, #122 Zhenhua RD., Futian, Shenzhen, China





## POWER COMBICON plugs with a 7.62 mm pitch

---

### PC 5 plugs

The new PC 5 plug connection system is the logical further development of the classic POWER COMBICON PC 4. With a pitch of 7.62 mm all PC 5 plugs provide a nominal voltage of 600 V to UL. The maximum permissible current is 41 A. An integrated double steel spring ensures additional contact reliability, especially in the event of extreme power or temperature fluctuations.

PC 5 is designed for 2 to 12 positions and the screw connection of stranded conductors up to 6 mm<sup>2</sup> is established in accordance with the proven cage principle. A screw flange for securing the connection of the plug to the header is also included in the PC 5 range.

#### Note:

**PC 5 plugs are compatible with the current PC 4 headers.**



### COMBICON Select

The COMBICON search engine with CAD downloading

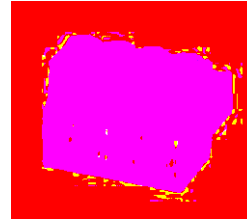




COMBICON Select – the printed circuit board connection software supports your workflow from the PCB and housing layout to the ordering process with:

- Systematic and fast selection of products
- Universal Internet aided engineering with extensive CAD downloading
- Easy-to-use e-shopping functions.

[select.phoenixcontact.com/combicon](http://select.phoenixcontact.com/combicon)

**POWER COMBICON plugs**  
**PC 5/...-ST-7,62**  
**7.62 mm Pitch**





Description	No. of pos.	Dim. a [mm]	Type	Order No.	Pcs./Pkt.
<b>POWER COMBICON plugs,</b> 7.62 mm pitch, color: green	2	7.62	<b>PC 5/2-ST-7,62</b>	<b>19 75 58 7</b>	50
	3	15.24	<b>PC 5/3-ST-7,62</b>	<b>19 75 59 0</b>	
	4	22.86	<b>PC 5/4-ST-7,62</b>	<b>19 75 60 0</b>	
	5	30.48	<b>PC 5/5-ST-7,62</b>	<b>19 75 61 3</b>	
	6	38.10	<b>PC 5/6-ST-7,62</b>	<b>19 75 62 6</b>	
	7	45.72	<b>PC 5/7-ST-7,62</b>	<b>19 75 63 9</b>	
	8	53.34	<b>PC 5/8-ST-7,62</b>	<b>19 75 64 2</b>	
	9	60.96	<b>PC 5/9-ST-7,62</b>	<b>19 75 65 5</b>	
	10	68.58	<b>PC 5/10-ST-7,62</b>	<b>19 75 66 8</b>	
	11	76.20	<b>PC 5/11-ST-7,62</b>	<b>19 75 67 1</b>	
	12	83.82	<b>PC 5/12-ST-7,62</b>	<b>19 75 68 4</b>	
	(1) <b>Coding profile</b> , is inserted into the slot on the plug and header, red insulating material			<b>CP-HCC 4</b>	
(2) <b>Screwdriver</b>			<b>SZK PZ 1</b>	<b>12 06 45 0</b>	10
(3) <b>Marker card</b> , with 12 pcs., 10-section marker strips, white self-adhesive, for 120 terminal blocks			<b>SK 7,62/3,8</b> (see COMBICON catalog)		
<b>Technical data</b>			see description		
Dimensions				7.62	
Pitch		[mm]		—	
Hole diameter		[mm]		—	
Pin dimensions		[mm]x[mm]		—	
<b>Technical data in acc. with IEC/ DIN VDE</b>					
Insulating material group		—		I	
Surge voltage category / contamination class		—/—	III / 3	III / 2	II / 2
Rated voltage		[V]	800	1000	1000
Rated surge voltage		[kV]	8	8	6
Nominal current / cross section		[A]/[mm²]		41 <sup>1)</sup> / 10	
Maximum load current / cross section		[A]/[mm²]		41 <sup>1)</sup> / 10	
<b>Connection capacity</b>					
Solid / stranded / conductor sizes		[mm²]/[mm²]/AWG		0.2 - 10 / 0.2 - 6 / 24 - 8	
Stranded with ferrule without / with plastic sleeve		[mm²]		0.25 - 6 / 0.25 - 4	
<b>Multiple connection (2 conductors with same cross section)</b>					
Solid / stranded		[mm²]		10	
Stranded with ferrule without plastic sleeve		[mm²]		A4	
Stranded with TWIN ferrule with plastic sleeve		[mm²]		M 3	
<b>Stripping length</b>					
Internal cylindrical gauge (IEC 60 947-1)		—		PA	
<b>Thread</b>		—		V0	
<b>Torque</b>		[Nm]			
<b>Insulating material</b>					
Inflammability class in acc. with UL 94					
<b>Approval data (UL/CUL and CSA)</b>					
Nominal voltage / current / conductor sizes		UL/CUL: [V]/[A]/AWG CSA: [V]/[A]/AWG		—	
				—	

<sup>1)</sup> Observe derating curve



**POWER COMBICON plugs**  
**PC 5/...-STF-7,62**  
**7.62 mm Pitch**

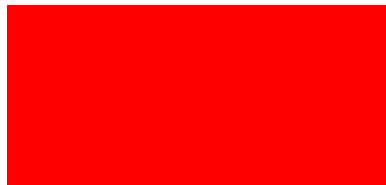


Description	No. of pos.	Dim. a [mm]	Type	Order No.	Pcs./Pkt.
<b>POWER COMBICON plugs,</b> 7.62 mm pitch, color: green, with screw flange	2	7.62	<b>PC 5/2-STF-7,62</b>	<b>19 75 69 7</b>	50
	3	15.24	<b>PC 5/3-STF-7,62</b>	<b>19 75 70 7</b>	
	4	22.86	<b>PC 5/4-STF-7,62</b>	<b>19 75 71 0</b>	
	5	30.48	<b>PC 5/5-STF-7,62</b>	<b>19 75 73 2</b>	
	6	38.10	<b>PC 5/6-STF-7,62</b>	<b>19 75 73 6</b>	
	7	45.72	<b>PC 5/7-STF-7,62</b>	<b>19 75 74 9</b>	
	8	53.34	<b>PC 5/8-STF-7,62</b>	<b>19 75 75 2</b>	
	9	60.96	<b>PC 5/9-STF-7,62</b>	<b>19 75 76 5</b>	
	10	68.58	<b>PC 5/10-STF-7,62</b>	<b>19 75 77 8</b>	
	11	76.20	<b>PC 5/11-STF-7,62</b>	<b>19 75 78 1</b>	
	12	83.82	<b>PC 5/12-STF-7,62</b>	<b>19 75 79 4</b>	
	(1) <b>Coding profile</b> , is inserted into the slot on the plug and header, red insulating material			<b>CP-HCC 4</b>	
(2) <b>Screwdriver</b>			<b>SZK PZ 1</b>	<b>12 06 45 0</b>	10
(3) <b>Marker card</b> , with 12 pcs., 10-section marker strips, white self-adhesive, for 120 terminal blocks			<b>SK 7,62/3,8</b> (see COMBICON catalog)		

**Technical data**

Dimensions		see description
Pitch	[mm]	7.62
Hole diameter	[mm]	—
Pin dimensions	[mm]x[mm]	—
<b>Technical data in acc. with IEC/ DIN VDE</b>		
Insulating material group	—	I
Surge voltage category / contamination class	—/—	III / 3    III / 2    II / 2
Rated voltage	[V]	800    1000    1000
Rated surge voltage	[kV]	8    8    6
Nominal current / cross section	[A]/[mm²]	41 <sup>1)</sup> / 10
Maximum load current / cross section	[A]/[mm²]	41 <sup>1)</sup> / 10
<b>Connection capacity</b>		
Solid / stranded / conductor sizes	[mm²]/[mm²]/AWG	0.2 - 10 / 0.2 - 6 / 24 - 8
Stranded with ferrule without / with plastic sleeve	[mm²]	0.25 - 6 / 0.25 - 4
<b>Multiple connection (2 conductors with same cross section)</b>		
Solid / stranded	[mm²]	
Stranded with ferrule without plastic sleeve	[mm²]	
Stranded with TWIN ferrule with plastic sleeve	[mm²]	
<b>Stripping length</b>	[mm]	10
<b>Internal cylindrical gauge (IEC 60 947-1)</b>	—	A4
<b>Thread</b>	—	M 3
<b>Torque</b>	[Nm]	
<b>Insulating material</b>		PA
Inflammability class in acc. with UL 94		V0
<b>Approval data (UL/CUL and CSA)</b>		
Nominal voltage / current / conductor sizes	UL/CUL: [V]/[A]/AWG CSA: [V]/[A]/AWG	— —

<sup>1)</sup> Observe derating curve





## POWER COMBICON plugs with screw flange and shield, 7.62 mm pitch

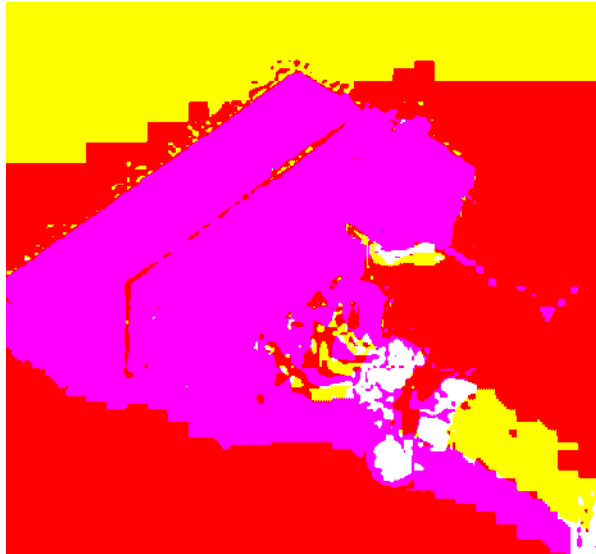
---

### PC 5/...-STF-SH-7,62

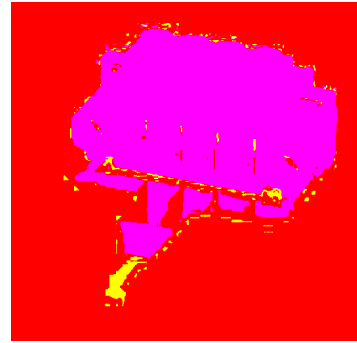
The PC plug with shield provides a professional connection of the braided shield to prevent electrical interference. The largest possible contact of the shielded cable is decisive for compliance with EMC requirements and for high-quality shielding. To ensure optimum connection of the conductor with the shield, conventional metal cable clamps should be used (see photo). The shielded cable may also be connected to the engaged shield with a plastic cable tie. The screw integrated in the plug flange guarantees a perfect connection between the shroud and the metal front.



### POWER COMBICON PCB-SHIELD

If the housing wall or front panel is not conductive, it is possible to route the shielding function on to POWER COMBICON PCB-SHIELD directly on the PCB via the flange screw (see photo). The 6.3/2.8 x 0.8 mm slip-on connection can then also be used to reach the next grounding point along the shortest possible route.



**POWER COMBICON plugs**  
**PC 5/...-STF-SH-7,62**  
**7.62 mm Pitch**



Description	No. of pos.	Dim. a [mm]
<b>POWER COMBICON plugs, 7.62 mm pitch, color: green, with screw flange and shield</b>	4	22.86
(1) <b>Coding profile</b> , is inserted into the slot on the plug and header, red insulating material		
(2) <b>Screwdriver</b>		
(3) <b>Marker card</b> , with 12 pcs., 10-section marker strips, white self-adhesive, for 120 terminal blocks		
<b>Technical data</b>		
Dimensions		
Pitch		[mm] 7.62
Hole diameter		[mm] —
Pin dimensions		[mm]x[mm] —
<b>Technical data in acc. with IEC/ DIN VDE</b>		
Insulating material group		—
Surge voltage category / contamination class		—/—
Rated voltage		[V] 800
Rated surge voltage		[kV] 8
Nominal current / cross section		[A]/[mm²] 41 <sup>1)</sup> / 10
Maximum load current / cross section		[A]/[mm²] 41 <sup>1)</sup> / 10
<b>Connection capacity</b>		
Solid / stranded / conductor sizes		[mm²]/[mm²]/AWG 0.2 - 10 / 0.2 - 6 / 24 - 8
Stranded with ferrule without / with plastic sleeve		[mm²] 0.25 - 6 / 0.25 - 4
<b>Multiple connection (2 conductors with same cross section)</b>		
Solid / stranded		[mm²] —
Stranded with ferrule without plastic sleeve		[mm²] —
Stranded with TWIN ferrule with plastic sleeve		[mm²] —
<b>Stripping length</b>		[mm] 10
<b>Internal cylindrical gauge (IEC 60 947-1)</b>		—
<b>Thread</b>		—
<b>Thread</b>		M 3
<b>Torque</b>		[Nm] —
<b>Insulating material</b>		
Inflammability class in acc. with UL 94		PA
		V0
<b>Approval data (UL/CUL and CSA)</b>		
Nominal voltage / current / conductor sizes		UL/CUL: [V]/[A]/AWG —
		CSA: [V]/[A]/AWG —

Type	Order No.	Pcs./Pkt.
<b>PC 5/4-STF-SH-7,62</b>	<b>19 75 80 4</b>	25
<b>CP-HCC 4</b>	<b>16 00 02 7</b>	100
<b>SZK PZ 1</b>	<b>12 06 45 0</b>	10
<b>SK 7,62/3,8</b> (see COMBICON catalog)		
see description		
	7.62	
	—	
	—	
	I	
III / 3	III / 2	II / 2
800	1000	1000
8	8	6
	41 <sup>1)</sup> / 10	
	41 <sup>1)</sup> / 10	
	0.2 - 10 / 0.2 - 6 / 24 - 8	
	0.25 - 6 / 0.25 - 4	
	10	
	A4	
	M 3	
	PA	
	V0	
	—	
	—	

<sup>1)</sup> Observe derating curve



**POWER COMBICON headers with  
POWER COMBICON PCB-SHIELD  
PC 4/...-G-7,62  
7.62 mm Pitch**



Description	No. of pos.	Dim. a [mm]
<b>POWER COMBICON headers, 7.62 mm pitch, color: green</b>	2	7.62
	4	22.86
(1) <b>Coding profile</b> , is inserted into the slot on the plug and header, red insulating material		
(2) <b>Shroud</b> , connects the shield from the flange screw of the plug to the PCB with a 6.3/2.8 x 0.8 mm slip-on connection		
(3) <b>Marker card</b> , with 12 pcs., 10-section marker strips, white self-adhesive, for 120 terminal blocks		
<b>Technical data</b>		
Dimensions		
Pitch		[mm]
Hole diameter		[mm]
Pin dimensions		[mm]x[mm]
<b>Technical data in acc. with IEC/ DIN VDE</b>		
Insulating material group		—
Surge voltage category / contamination class		—/—
Rated voltage		[V]
Rated surge voltage		[kV]
Nominal current / cross section		[A]/[mm <sup>2</sup> ]
Maximum load current / cross section		[A]/[mm <sup>2</sup> ]
<b>Insulating material</b>		
Inflammability class in acc. with UL 94		
<b>Approval data (UL/CUL and CSA)</b>		
Nominal voltage / current / conductor sizes	UL/CUL:	[V]/[A]/AWG
	CSA:	[V]/[A]/AWG

Type	Order No.	Pcs./Pkt.
<b>PC 4/2-G-7,62</b>	<b>18 04 79 7</b>	50
<b>PC 4/4-G-7,62</b>	<b>18 04 81 0</b>	50
<b>CP-HCC 4</b>	<b>16 00 02 7</b>	100
<b>POWER COMBICON PCB-SHIELD</b>	<b>19 68 38 7</b>	50
<b>SK 7,62/3,8</b> (see COMBICON catalog)		
see description		
	7.62	
	1.3	
	1 x 0.8	
	III / 3	IIIa
	400	III / 2
	6	II / 2
	6	630
	6	6
	20 <sup>1)</sup> / —	
	20 <sup>1)</sup> / —	
	PBT	
	V0	
	—	
	—	

<sup>1)</sup> With PC 4/... plug, 41 A with PC 5/... plug

