



Chipsmall Limited consists of a professional team with an average of over 10 year of expertise in the distribution of electronic components. Based in Hongkong, we have already established firm and mutual-benefit business relationships with customers from,Europe,America and south Asia,supplying obsolete and hard-to-find components to meet their specific needs.

With the principle of “Quality Parts,Customers Priority,Honest Operation,and Considerate Service”,our business mainly focus on the distribution of electronic components. Line cards we deal with include Microchip,ALPS,ROHM,Xilinx,Pulse,ON,Everlight and Freescale. Main products comprise IC,Modules,Potentiometer,IC Socket,Relay,Connector.Our parts cover such applications as commercial,industrial, and automotives areas.

We are looking forward to setting up business relationship with you and hope to provide you with the best service and solution. Let us make a better world for our industry!



## Contact us

Tel: +86-755-8981 8866 Fax: +86-755-8427 6832

Email & Skype: [info@chipsmall.com](mailto:info@chipsmall.com) Web: [www.chipsmall.com](http://www.chipsmall.com)

Address: A1208, Overseas Decoration Building, #122 Zhenhua RD., Futian, Shenzhen, China




## Photovoltaic connector - PV-FT-CM-C-4-130-RD - 1805164

Please be informed that the data shown in this PDF Document is generated from our Online Catalog. Please find the complete data in the user's documentation. Our General Terms of Use for Downloads are valid (<http://phoenixcontact.com/download>)



RoHS

### Key Commercial Data

Packing unit	50 STK
GTIN	 4 046356 671446
GTIN	4046356671446

### Technical data

#### Dimensions

Fixed cable length	130 mm
External cable diameter	4.6 mm $\pm$ 0.15 mm

#### Ambient conditions

Degree of protection (when plugged in)	IP66 / IP68 (2 m / 24 h)
Degree of protection (not plugged in)	IP65
Ambient temperature (operation)	-40 °C ... 85 °C
Ambient temperature (assembly)	-25 °C ... 50 °C

#### General

Design	Pin
Tightening torque nut	1.8 Nm $\pm$ 0.1 Nm
Insertion force	45 N $\pm$ 10 N
Disconnect force	250 N $\pm$ 50 N
Pull-out force of cable $\geq$ disconnect force	> 80 N
Rated voltage	1500 V
Rated current (4.0 mm <sup>2</sup> )	35 A
Nominal cross section	4 mm <sup>2</sup>
Protection class	II

# Photovoltaic connector - PV-FT-CM-C-4-130-RD - 1805164

## Technical data

### Material

Color	black
Insulating material	mPPE
Contact material	Cu
Contact surface material	Ag
Flammability rating according to UL 94	V0

### Connection data

Connection method	Crimp
Connection capacity	4 mm <sup>2</sup>
Contact resistance with connected conductor	0.45 mΩ
Cable type	S02

### Conductor

Outer sheath, material	PE-X
External sheath, color	red

### Standards and Regulations

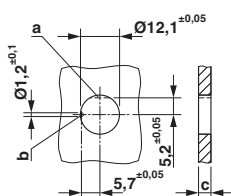
Flammability rating according to UL 94	V0
--	----

### Environmental Product Compliance

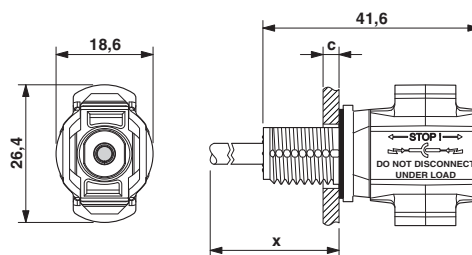
China RoHS	Environmentally friendly use period: unlimited = EFUP-e
	No hazardous substances above threshold values

## Drawings

Dimensional drawing



Dimensional drawing



Dimension x = cable length  
c: panel thickness - plastic: 2 - 6 mm; metal: 2 - 5 mm

## Approvals

### Approvals

### Approvals


VDE Zeichengenehmigung / EAC / TÜV Rheinland

## Photovoltaic connector - PV-FT-CM-C-4-130-RD - 1805164

### Approvals

Ex Approvals

#### Approval details

VDE Zeichengenehmigung		<a href="http://www2.vde.com/de/Institut/Online-Service/VDE-gepruefteProdukte/Seiten/Online-Suche.aspx">http://www2.vde.com/de/Institut/Online-Service/VDE-gepruefteProdukte/Seiten/Online-Suche.aspx</a>	40031807
Nominal voltage UN		1500 V	
Nominal current IN		40 A	
mm <sup>2</sup> /AWG/kcmil		4.0	

EAC		B.01742
-----	---	---------

TÜV Rheinland	<a href="http://www.certipedia.com">http://www.certipedia.com</a>	R 60126961
Nominal voltage UN		1500 V

Phoenix Contact 2018 © - all rights reserved  
<http://www.phoenixcontact.com>

PHOENIX CONTACT GmbH & Co. KG  
Flachsmarktstr. 8  
32825 Blomberg  
Germany  
Tel. +49 5235 300  
Fax +49 5235 3 41200  
<http://www.phoenixcontact.com>