



Chipsmall Limited consists of a professional team with an average of over 10 year of expertise in the distribution of electronic components. Based in Hongkong, we have already established firm and mutual-benefit business relationships with customers from,Europe,America and south Asia,supplying obsolete and hard-to-find components to meet their specific needs.

With the principle of “Quality Parts,Customers Priority,Honest Operation,and Considerate Service”,our business mainly focus on the distribution of electronic components. Line cards we deal with include Microchip,ALPS,ROHM,Xilinx,Pulse,ON,Everlight and Freescale. Main products comprise IC,Modules,Potentiometer,IC Socket,Relay,Connector.Our parts cover such applications as commercial,industrial, and automotives areas.

We are looking forward to setting up business relationship with you and hope to provide you with the best service and solution. Let us make a better world for our industry!



Contact us

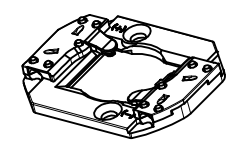
Tel: +86-755-8981 8866 Fax: +86-755-8427 6832

Email & Skype: info@chipsmall.com Web: www.chipsmall.com

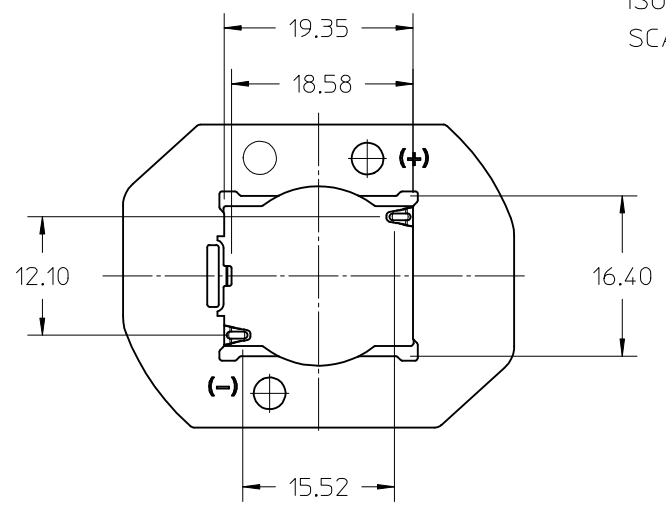
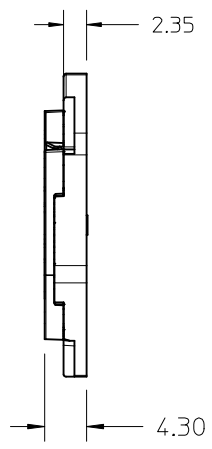
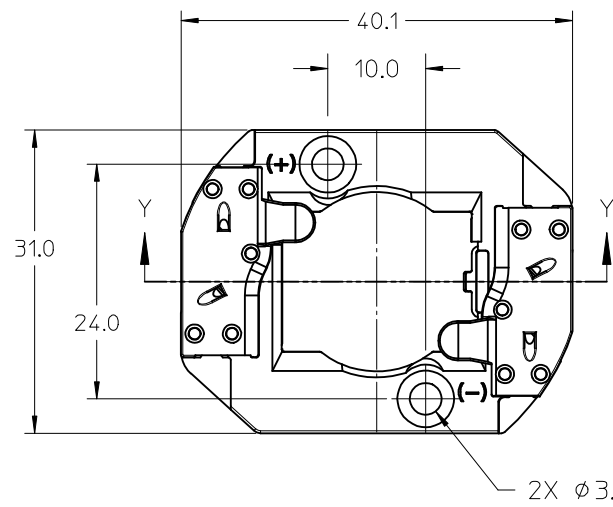
Address: A1208, Overseas Decoration Building, #122 Zhenhua RD., Futian, Shenzhen, China



10	9	8	7	6	5	4
PART NUMBER	DESCRIPTION		MATERIAL	COLOR	AGENCY APPROVAL	
180580-0001	COB LED HOLDER ASSEMBLY - NYLON		POLYAMIDE, GLASS FILLED	NATURAL	YES (SEE NOTE 6)	
180580-0101	COB LED HOLDER ASSEMBLY - PBT		POLYESTER, GLASS FILLED	WHITE	YES (SEE NOTE 6)	



ISO VIEW
SCALE 1:1

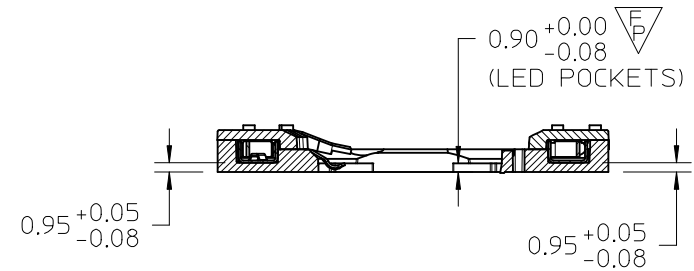
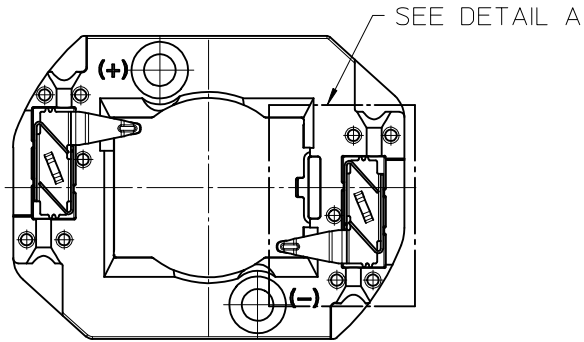


- 1) MATERIALS: HOUSIG AND CAPS: SEE CHART
- 2) WIRE TRAP TERMINALS: COPPER ALLOY
 - a. FINISH: LED CONTACT: GOLD OVER NICKEL, WIRE TRAP: TIN OVER NICKEL
- 3) THIS PRODUCT IS ELV AND ROHS COMPLIANT
- 4) APPLICABLE WIRE GAUGE - 18, 20, OR 22 AWG
 - a. SOLID WIRE IS PREFERRED
 - b. IF STRANDED WIRE IS USED, PRE-TINNED IS RECOMMENDED
 - c. 1 cm +2.00/-0.00 STRIP LENGTH IS RECOMMENDED
- 5) MOUNT HOLDER USING M3 OR 4-40 SCREWS (2), TORQUE: 0.2 MIN TO 0.4 MAX NEWTON METERS
- 6) UL RECOGNITION TO UL496; c-UL RECOGNITION TO CSA-C22.2 NO. 43 (2008) - RATED 600V UL FILE NUMBER: E345583 (SEE TABLE)
- 7) DIMENSIONS IN PARENTHESES (XX.XX) ARE FOR REFERENCE ONLY

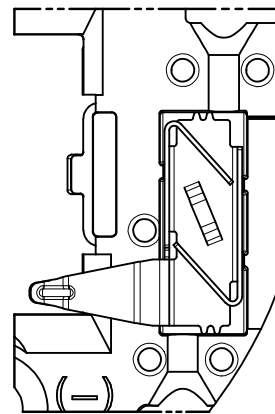
RELEASED EC NO: SSL2017-0012 DRAWN: ZAB, JANOVSKI 2016/08/17 CHKD: T3 APPR: GMEYER 2016/09/21	DESCRIPTION REV	QUALITY SYMBOLS	GENERAL TOLERANCES (UNLESS SPECIFIED)	DIMENSION STYLE MM ONLY		SCALE 2:1	DESIGN UNITS METRIC	THIRD ANGLE PROJECTION
		▽=0	mm INCH	DRAWN BY DATE	TITLE COB LED HOLDER 19.0MM X 16.0MM RECTANGULAR COB molex			
		▽=0	4 PLACES ± --- ± ---	MDEVITO 2012/09/06				
		▽=0	3 PLACES ± --- ± ---	CHECKED BY DATE	DOCUMENT NO. SD-180580-001 SHEET NO. 1 OF 4			
▽=0	2 PLACES ± 0.13 ± ---	CCARRANZA 2012/09/06	MATERIAL NO. SEE CHART					
	1 PLACE ± 0.25 ± ---	APPROVED BY DATE	DRAFT WHERE APPLICABLE MUST REMAIN WITHIN DIMENSIONS					
	0 PLACE ± --- ± ---	DMCGOWAN 2012/09/13	THIS DRAWING CONTAINS INFORMATION THAT IS PROPRIETARY TO MOLEX INCORPORATED AND SHOULD NOT BE USED WITHOUT WRITTEN PERMISSION					
ANGULAR ± 1/2°								

10 9 8 7 6 5 4 3 2 1

NOTE: WIRE TRAP CAPS ARE REMOVED FOR CLARITY



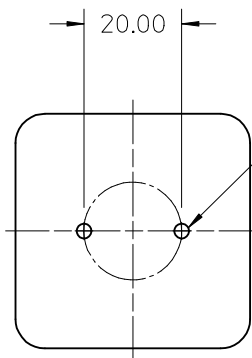
SECTION Y-Y



DETAIL A
Scale 4:1

VIEW OF TWO-WAY WIRE TRAP

WIRE TRAPS CAN ACCOMMODATE
18, 20, OR 22 GAUGE WIRE



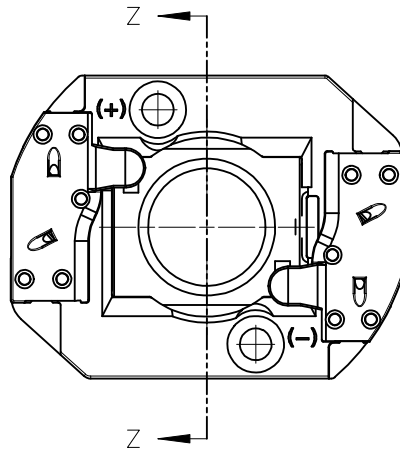
M3 OR 4-40 TAPPED HOLES (2)
TORQUE SCREWS 0.2 MIN TO
0.4 MAX NEWTON METERS

RECOMMENDED MOUNTING DIMENSIONS (NTS)

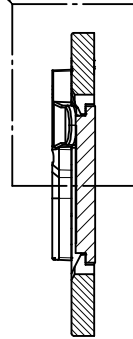
RELEASED EC NO: SSL2017-0012 T3 DRAWN: ZABJANOVSKI 2016/08/17 CHKD: APPR: GMEYER 2016/09/21 REV	QUALITY SYMBOLS	GENERAL TOLERANCES (UNLESS SPECIFIED)	DIMENSION STYLE MM ONLY		SCALE 2:1	DESIGN UNITS METRIC	THIRD ANGLE PROJECTION																														
	$\nabla = 0$ $\nabla = 0$ $\nabla = 0$	<table border="1"> <thead> <tr> <th></th> <th>mm</th> <th>INCH</th> </tr> </thead> <tbody> <tr> <td>4 PLACES</td> <td>± ---</td> <td>± ---</td> </tr> <tr> <td>3 PLACES</td> <td>± ---</td> <td>± ---</td> </tr> <tr> <td>2 PLACES</td> <td>± 0.13</td> <td>± ---</td> </tr> <tr> <td>1 PLACE</td> <td>± 0.25</td> <td>± ---</td> </tr> <tr> <td>0 PLACE</td> <td>± ---</td> <td>± ---</td> </tr> </tbody> </table>		mm	INCH	4 PLACES	± ---	± ---	3 PLACES	± ---	± ---	2 PLACES	± 0.13	± ---	1 PLACE	± 0.25	± ---	0 PLACE	± ---	± ---	<table border="1"> <thead> <tr> <th>DRAWN BY</th> <th>DATE</th> </tr> </thead> <tbody> <tr> <td>MDEVITO</td> <td>2012/09/06</td> </tr> <tr> <th>CHECKED BY</th> <th>DATE</th> </tr> <tr> <td>CCARRANZA</td> <td>2012/09/06</td> </tr> <tr> <th>APPROVED BY</th> <th>DATE</th> </tr> <tr> <td>DMCGOWAN</td> <td>2012/09/13</td> </tr> </tbody> </table>	DRAWN BY	DATE	MDEVITO	2012/09/06	CHECKED BY	DATE	CCARRANZA	2012/09/06	APPROVED BY	DATE	DMCGOWAN	2012/09/13	TITLE		COB LED HOLDER 19.0MM X 16.0MM RECTANGULAR COB molex	SHEET NO. 2 OF 4
		mm	INCH																																		
	4 PLACES	± ---	± ---																																		
3 PLACES	± ---	± ---																																			
2 PLACES	± 0.13	± ---																																			
1 PLACE	± 0.25	± ---																																			
0 PLACE	± ---	± ---																																			
DRAWN BY	DATE																																				
MDEVITO	2012/09/06																																				
CHECKED BY	DATE																																				
CCARRANZA	2012/09/06																																				
APPROVED BY	DATE																																				
DMCGOWAN	2012/09/13																																				
ANGULAR ±1/2°		MATERIAL NO.	DOCUMENT NO.																																		
DRAFT WHERE APPLICABLE MUST REMAIN WITHIN DIMENSIONS		SIZE B	SEE CHART																																		
THIS DRAWING CONTAINS INFORMATION THAT IS PROPRIETARY TO MOLEX INCORPORATED AND SHOULD NOT BE USED WITHOUT WRITTEN PERMISSION																																					

9 8 7 6 5 4 3 2 1

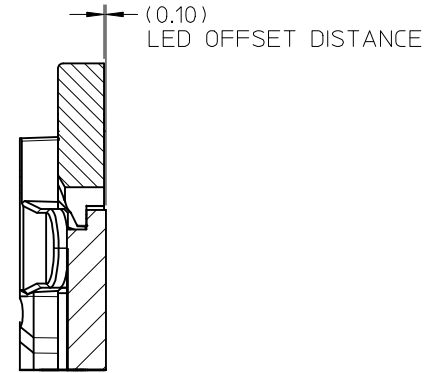
ILLUSTRATION OF HOLDER MATED WITH LED



SEE DETAIL 1



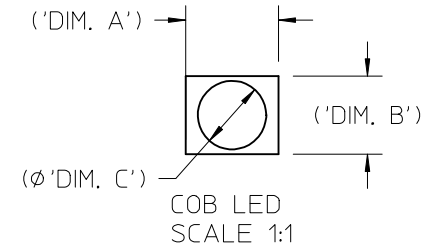
SECTION Z-Z



DETAIL 1
SCALE 4:1

ENTER DESCRIPTION EC NO: SSL2017-0012 DRWNL: ZAB.JANOVSKI 2016/08/17 CHKD: APPR: GMEYER 2016/09/21 REV	QUALITY SYMBOLS $\nabla F=0$ $\nabla F=0$ $\nabla F=0$	GENERAL TOLERANCES (UNLESS SPECIFIED) <table border="1"> <thead> <tr> <th></th> <th>mm</th> <th>INCH</th> </tr> </thead> <tbody> <tr> <td>4 PLACES</td> <td>\pm---</td> <td>\pm---</td> </tr> <tr> <td>3 PLACES</td> <td>\pm---</td> <td>\pm---</td> </tr> <tr> <td>2 PLACES</td> <td>± 0.13</td> <td>\pm---</td> </tr> <tr> <td>1 PLACE</td> <td>± 0.25</td> <td>\pm---</td> </tr> <tr> <td>0 PLACE</td> <td>\pm---</td> <td>\pm---</td> </tr> </tbody> </table>		mm	INCH	4 PLACES	\pm ---	\pm ---	3 PLACES	\pm ---	\pm ---	2 PLACES	± 0.13	\pm ---	1 PLACE	± 0.25	\pm ---	0 PLACE	\pm ---	\pm ---	DIMENSION STYLE MM ONLY DRAWN BY DATE MDEVITO 2012/09/06 CHECKED BY DATE CCARRANZA 2012/09/06 APPROVED BY DATE DMCGOWAN 2012/09/13	SCALE 2:1 TITLE COB LED HOLDER 19.0MM X 16.0MM RECTANGULAR COB	DESIGN UNITS METRIC THIRD ANGLE PROJECTION
		mm	INCH																				
	4 PLACES	\pm ---	\pm ---																				
	3 PLACES	\pm ---	\pm ---																				
2 PLACES	± 0.13	\pm ---																					
1 PLACE	± 0.25	\pm ---																					
0 PLACE	\pm ---	\pm ---																					
DRAFT WHERE APPLICABLE MUST REMAIN WITHIN DIMENSIONS	MATERIAL NO. SEE CHART	DOCUMENT NO. SD-180580-001	SHEET NO. 3 OF 4																				
SIZE B	THIS DRAWING CONTAINS INFORMATION THAT IS PROPRIETARY TO MOLEX INCORPORATED AND SHOULD NOT BE USED WITHOUT WRITTEN PERMISSION																						
molex																							

COB MFG.	TYPE	DIM. 'A'	DIM. 'B'	THK	DIM. 'C'
NICHIA	NFC*L060B-V*	19.0	16.0	1.0	13.5
NICHIA	NVC*L024*	19.0	16.0	1.0	13.0
NICHIA	NFC*L036B*	19.0	16.0	1.0	10.7
LUMILEDS	LUXEON 1202/1203	19.0	16.0	1.0	11.3
SAMSUNG	LC040C	19.0	16.0	1.0	12.6



ENTER DESCRIPTION EC NO: SSL2017-0012 TDR: DRW: L: ZAB, JANOVSKI 2016/08/17 CHKD: 3 APPR: GMEYER 2016/09/21	QUALITY SYMBOLS	GENERAL TOLERANCES (UNLESS SPECIFIED)		DIMENSION STYLE MM ONLY		SCALE 2:1	DESIGN UNITS METRIC	THIRD ANGLE PROJECTION			
	DESCRIPTION REV	▽=0 ▽=0	mm	INCH	DRAWN BY MDEVITO	DATE 2012/09/06	TITLE COB LED HOLDER 19.0MM X 16.0MM RECTANGULAR COB				
			4 PLACES	± ---	± ---	CHECKED BY CCARRANZA				DATE 2012/09/06	
			3 PLACES	± ---	± ---	APPROVED BY DMCGOWAN	DATE 2012/09/13	DOCUMENT NO. SD-180580-001			
			2 PLACES	± 0.13	± ---	MATERIAL NO.					SHEET NO. 4 OF 4
1 PLACE			± 0.25	± ---	SEE CHART						
0 PLACE	± ---	± ---	DRAFT WHERE APPLICABLE MUST REMAIN WITHIN DIMENSIONS		THIS DRAWING CONTAINS INFORMATION THAT IS PROPRIETARY TO MOLEX INCORPORATED AND SHOULD NOT BE USED WITHOUT WRITTEN PERMISSION						
ANGULAR		± 1/2°									