



Chipsmall Limited consists of a professional team with an average of over 10 year of expertise in the distribution of electronic components. Based in Hongkong, we have already established firm and mutual-benefit business relationships with customers from,Europe,America and south Asia,supplying obsolete and hard-to-find components to meet their specific needs.

With the principle of “Quality Parts,Customers Priority,Honest Operation,and Considerate Service”,our business mainly focus on the distribution of electronic components. Line cards we deal with include Microchip,ALPS,ROHM,Xilinx,Pulse,ON,Everlight and Freescale. Main products comprise IC,Modules,Potentiometer,IC Socket,Relay,Connector.Our parts cover such applications as commercial,industrial, and automotives areas.

We are looking forward to setting up business relationship with you and hope to provide you with the best service and solution. Let us make a better world for our industry!



Contact us

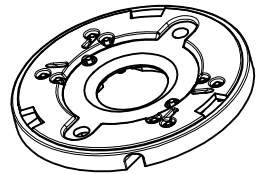
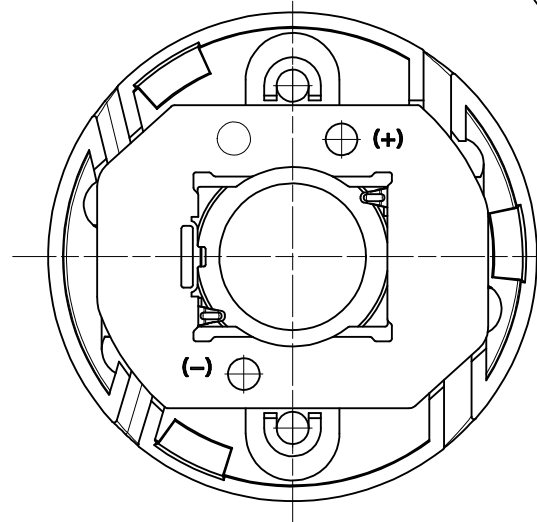
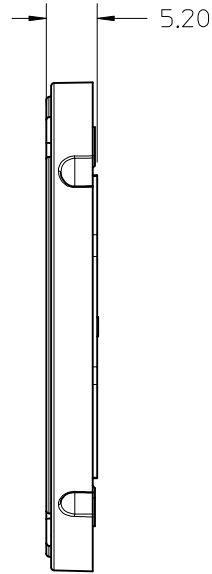
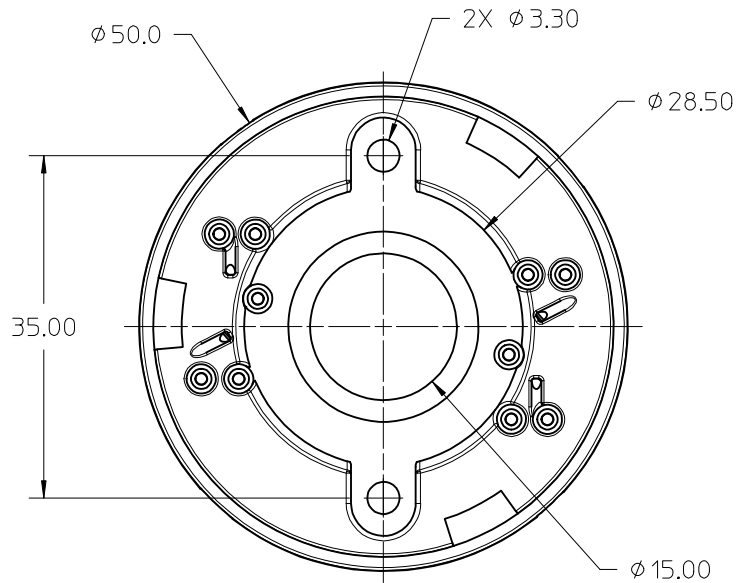
Tel: +86-755-8981 8866 Fax: +86-755-8427 6832

Email & Skype: info@chipsmall.com Web: www.chipsmall.com

Address: A1208, Overseas Decoration Building, #122 Zhenhua RD., Futian, Shenzhen, China



P/N 180580-0004 HOLDER WITHOUT LENS ATTACH FEATURES

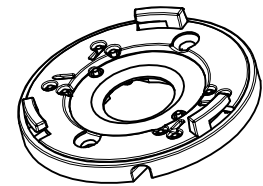


ISO TOP VIEW
SCALE 1:1

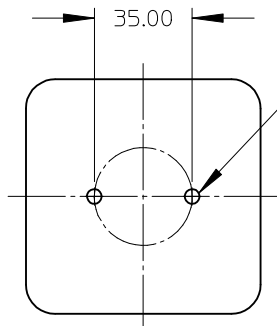
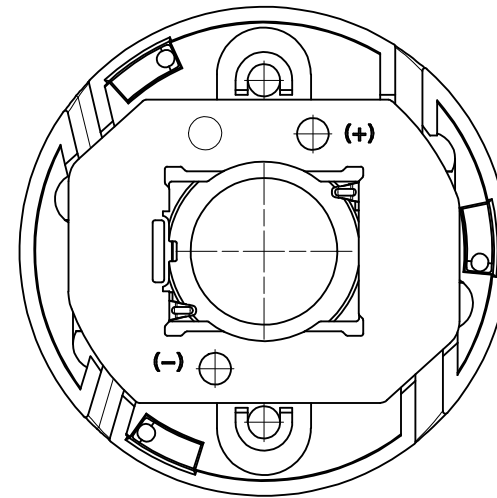
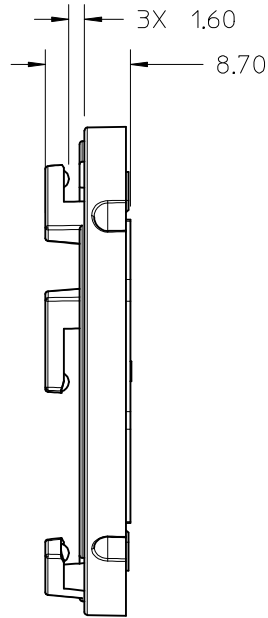
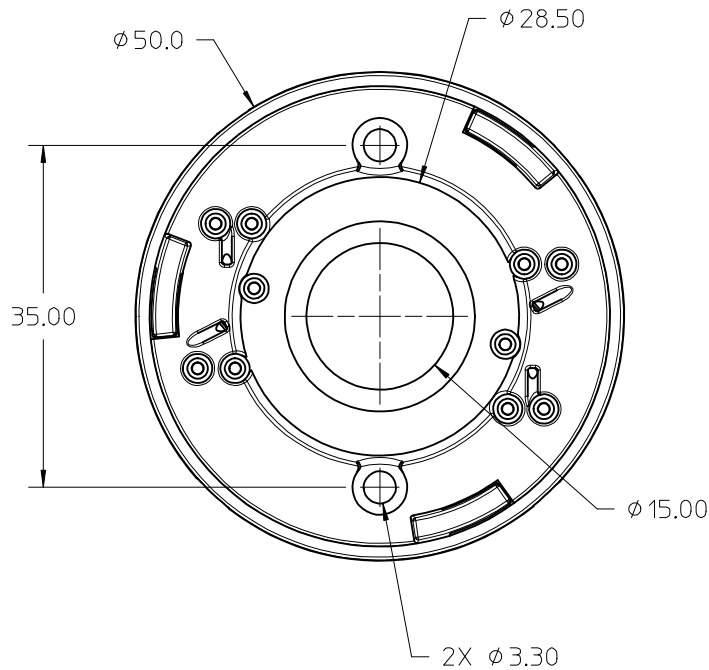
- 1) MATERIALS: COVER: PBT 30% GF, COLOR: WHITE, UL94V-0
HOUSING: PBT 30% GF, COLOR: WHITE, UL94V-0
- 2) WIRE TRAP TERMINALS: COPPER ALLOY
FINISH: LED CONTACT: GOLD OVER NICKEL,
WIRE TRAP: TIN OVER NICKEL.
- 3) APPLICABLE WIRE GAUGE - 18, 20, OR 22 AWG
 - a. SOLID WIRE IS PREFERRED
 - b. PRE-TINNED STRANDED WIRE IS ACCEPTABLE
 - c. 1 cm +2.00/-0.00cm STRIP LENGTH IS RECOMMENDED
- 4) MOUNT HOLDER USING M3 OR 4-40 SCREWS (2),
0.2 NEWTON METER MIN 0.4 NEWTON METER MAX TORQUE.
- 5) UL:OLFB2 UL496 FILE: E345583.

ENTER DESCRIPTION EC NO: SSL2017-0012 DRWNLZABJANOVSKI 2016/08/16 CHKD: APPR:GMEYER 2016/09/21 REV B2	QUALITY SYMBOLS	GENERAL TOLERANCES (UNLESS SPECIFIED)		DIMENSION STYLE MM ONLY		SCALE 2:1	DESIGN UNITS METRIC	THIRD ANGLE PROJECTION	
	▽=0	mm	INCH	DRAWN BY MCOLE	DATE 2013/08/21	TITLE COB HOLDER ASSEMBLY 19.0MM X 16.0MM ZHAGA STYLE COVER ASSY molex			
	▽=0	4 PLACES ± --- ± ---	3 PLACES ± --- ± ---	CHECKED BY	DATE				
	▽=0	ANGULAR ±1/2°	2 PLACES ±0.13 ± ---	1 PLACE ±0.25 ± ---	0 PLACE ± --- ± ---	GMEYER	2014/05/06	MATERIAL NO. 1805800004	DOCUMENT NO. SD-180580-004
	DRAFT WHERE APPLICABLE MUST REMAIN WITHIN DIMENSIONS			SIZE B	THIS DRAWING CONTAINS INFORMATION THAT IS PROPRIETARY TO MOLEX INCORPORATED AND SHOULD NOT BE USED WITHOUT WRITTEN PERMISSION				

P/N 180580-0005 HOLDER WITH LENS ATTACH FEATURES



ISO VIEW TOP
SCALE 1:1

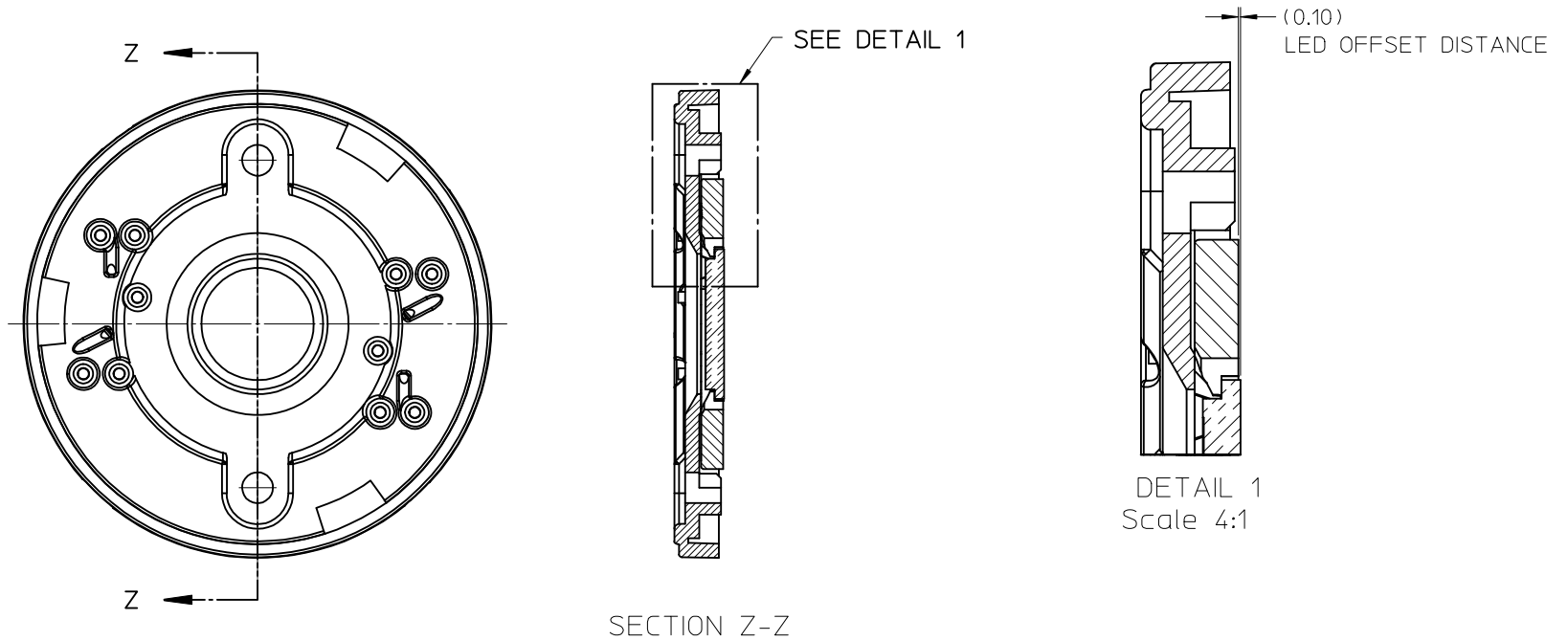


M3 OR 4-40 TAPPED HOLES (2)
TORQUE SCREWS 0.2-0.4 NEWTON METERS MAX.

RECOMMENDED MOUNTING DIMENSIONS (NTS)

ENTER DESCRIPTION EC NO: SSL2017-0012 DRWNL:ZAB.JANOVSKI 2016/08/16 CHKD: APPR:GMEYER 2016/09/21 B2	QUALITY SYMBOLS ▽/0 ▽/0 ▽/0	GENERAL TOLERANCES (UNLESS SPECIFIED)		DIMENSION STYLE MM ONLY		SCALE 2:1	DESIGN UNITS METRIC	THIRD ANGLE PROJECTION		
		4 PLACES	± ---	± ---	DRAWN BY	DATE	TITLE COB HOLDER ASSEMBLY 19.0MM X 16.0MM ZHAGA STYLE COVER ASSY			
		3 PLACES	± ---	± ---	MCOLE	2013/08/21				
		2 PLACES	± 0.13	± ---	CHECKED BY	DATE	DOCUMENT NO. SD-180580-004			
1 PLACE	± 0.25	± ---	GMEYER	2014/05/06						
0 PLACE	± ---	± ---	APPROVED BY	DATE	MATERIAL NO. 1805800005		SHEET NO. 2 OF 4			
ANGULAR ±1/2° DRAFT WHERE APPLICABLE MUST REMAIN WITHIN DIMENSIONS		THIS DRAWING CONTAINS INFORMATION THAT IS PROPRIETARY TO MOLEX INCORPORATED AND SHOULD NOT BE USED WITHOUT WRITTEN PERMISSION								

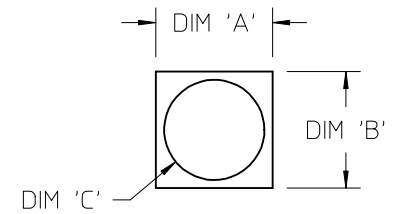
ILLUSTRATION OF HOLDER WITH LED ATTACHED



ENTER DESCRIPTION EC NO: SSL2017-0012 DRAWN: ZAB.JANOVSKI 2016/08/16 CHKD: APPR: GMEYER 2016/09/21 B2	QUALITY SYMBOLS $\nabla F/0$ $\nabla F/0$ $\nabla F/0$	GENERAL TOLERANCES (UNLESS SPECIFIED) <table border="1"> <thead> <tr> <th></th> <th>mm</th> <th>INCH</th> </tr> </thead> <tbody> <tr> <td>4 PLACES</td> <td>\pm---</td> <td>\pm---</td> </tr> <tr> <td>3 PLACES</td> <td>\pm---</td> <td>\pm---</td> </tr> <tr> <td>2 PLACES</td> <td>± 0.13</td> <td>\pm---</td> </tr> <tr> <td>1 PLACE</td> <td>± 0.25</td> <td>\pm---</td> </tr> <tr> <td>0 PLACE</td> <td>\pm---</td> <td>\pm---</td> </tr> </tbody> </table>		mm	INCH	4 PLACES	\pm ---	\pm ---	3 PLACES	\pm ---	\pm ---	2 PLACES	± 0.13	\pm ---	1 PLACE	± 0.25	\pm ---	0 PLACE	\pm ---	\pm ---	DIMENSION STYLE MM ONLY DRAWN BY: MCOLE DATE: 2013/08/21 CHECKED BY: DATE: GMEYER 2014/05/06 APPROVED BY:	SCALE 2:1 DESIGN UNITS METRIC THIRD ANGLE PROJECTION	TITLE COB HOLDER ASSEMBLY 19.0MM X 16.0MM ZHAGA STYLE COVER ASSY
		mm	INCH																				
	4 PLACES	\pm ---	\pm ---																				
	3 PLACES	\pm ---	\pm ---																				
2 PLACES	± 0.13	\pm ---																					
1 PLACE	± 0.25	\pm ---																					
0 PLACE	\pm ---	\pm ---																					
	ANGULAR $\pm 1/2^\circ$ DRAFT WHERE APPLICABLE MUST REMAIN WITHIN DIMENSIONS	MATERIAL NO. 1805800004	DOCUMENT NO. SD-180580-004	SHEET NO. 3 OF 4																			
		THIS DRAWING CONTAINS INFORMATION THAT IS PROPRIETARY TO MOLEX INCORPORATED AND SHOULD NOT BE USED WITHOUT WRITTEN PERMISSION																					

10 9 8 7 6 5 4 3 2 1

COB MFG.	TYPE	DIM. 'A'	DIM. 'B'	THK.	DIM. 'C'
NICHIA	NVC*L024*	19.0	16.0	1.0	13.0
NICHIA	NFC*L036B*	19.0	16.0	1.0	10.7
NICHIA	NFC*L060B-V*	19.0	16.0	1.0	13.5
LUMILEDS	LUXEON 1202/1203	19.0	16.0	1.0	11.3
SAMSUNG	LC040C	19.0	16.0	1.0	12.6



COB LED
SCALE 1:1

ENTER DESCRIPTION EC NO: SSL2017-0012 DRWNL:ZAB.JANOVSKI 2016/08/16 CHKD: APPR:GMEYER 2016/09/21	QUALITY SYMBOLS	GENERAL TOLERANCES (UNLESS SPECIFIED)		DIMENSION STYLE MM ONLY		SCALE 2:1	DESIGN UNITS METRIC	THIRD ANGLE PROJECTION		
	REV DESCRIPTION B2	=0 =0	4 PLACES	± ---	± ---	DRAWN BY	DATE	TITLE COB HOLDER ASSEMBLY 19.0MM X 16.0MM ZHAGA STYLE COVER ASSY		
			3 PLACES	± ---	± ---	MCOLE	2013/08/21			
			2 PLACES	± 0.13	± ---	CHECKED BY	DATE	MATERIAL NO. 1805800005		
			1 PLACE	± 0.25	± ---	GMEYER	2014/05/06			
0 PLACE			± ---	± ---	APPROVED BY	DATE	SHEET NO.		4 OF 4	
ANGULAR ±1/2°		DRAFT WHERE APPLICABLE MUST REMAIN WITHIN DIMENSIONS		SIZE B	THIS DRAWING CONTAINS INFORMATION THAT IS PROPRIETARY TO MOLEX INCORPORATED AND SHOULD NOT BE USED WITHOUT WRITTEN PERMISSION					

9 8 7 6 5 4 3 2 1