



Chipsmall Limited consists of a professional team with an average of over 10 year of expertise in the distribution of electronic components. Based in Hongkong, we have already established firm and mutual-benefit business relationships with customers from,Europe,America and south Asia,supplying obsolete and hard-to-find components to meet their specific needs.

With the principle of “Quality Parts,Customers Priority,Honest Operation,and Considerate Service”,our business mainly focus on the distribution of electronic components. Line cards we deal with include Microchip,ALPS,ROHM,Xilinx,Pulse,ON,Everlight and Freescale. Main products comprise IC,Modules,Potentiometer,IC Socket,Relay,Connector.Our parts cover such applications as commercial,industrial, and automotives areas.

We are looking forward to setting up business relationship with you and hope to provide you with the best service and solution. Let us make a better world for our industry!



Contact us

Tel: +86-755-8981 8866 Fax: +86-755-8427 6832

Email & Skype: info@chipsmall.com Web: www.chipsmall.com

Address: A1208, Overseas Decoration Building, #122 Zhenhua RD., Futian, Shenzhen, China



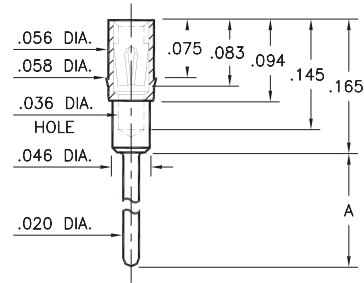
PIN RECEPTACLES

FOR .015" - .025" DIAMETER PINS

1802/3802/4030/8866

XXXX-0-15-XX-43-XX-04-0

Press-fit in .057 mounting hole

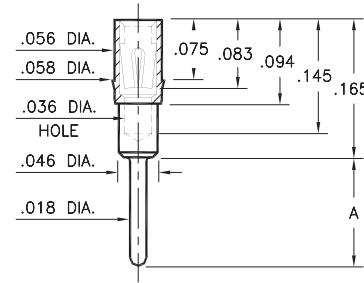


Basic Part Number	Length A
1802-0	.125
3802-0	.165
8866-0	.775
4030-0	.815

1803/1805/1808/3805

XXXX-0-15-XX-XX-XX-04-0

Press-fit in .057 mounting hole

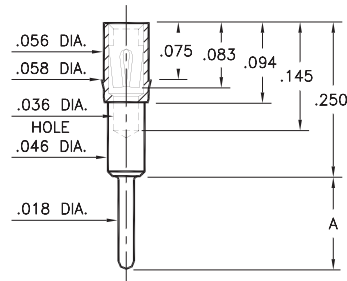


Basic Part Number	Length A
1808-0	.100
1803-0	.145
1805-0	.213
3805-0	.393

1804/1806

180X-0-15-XX-43-XX-04-0

Press-fit in .057 mounting hole

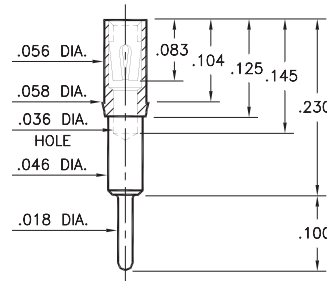


Basic Part Number	Length A
1804-0	.080
1806-0	.115

1807

1807-0-15-XX-43-XX-04-0

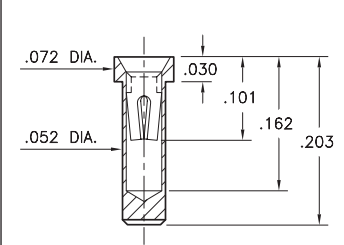
Press-fit in .057 mounting hole



4728

4728-15-XX-30-XX-10-0

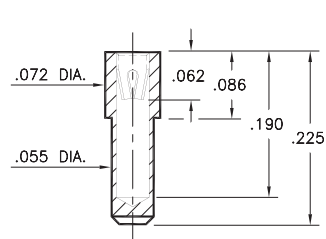
Solder mount in .054 min. mounting hole



8830

8830-15-XX-22-XX-10-0

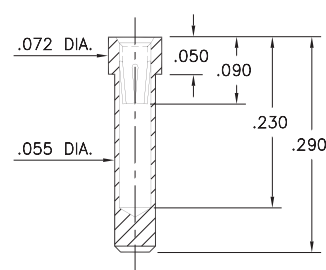
Solder mount in .057 min. mounting hole



8363

8363-0-15-XX-35-XX-10-0

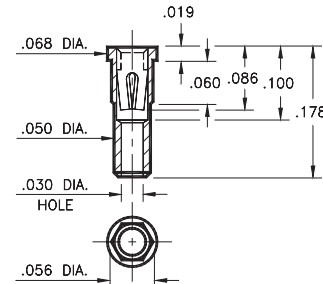
Solder mount in .057 min. mounting hole



4622

4622-0-15-XX-30-XX-10-0

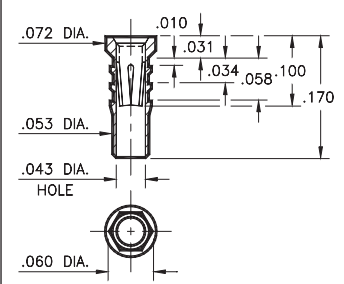
Hex press-fit in .053 plated through-hole



6252

6252-0-15-XX-32-XX-10-0

Hex press-fit in .057 plated through-hole



SPECIFICATIONS:

Shell Material: Brass Alloy 360, 1/2 Hard

Contact Material: Beryllium Copper Alloy 172, HT

Dimensions: Inches

Tolerances On: Lengths: ±.005

Diameters: ±.002

Angles: ± 2°



ORDER CODE: XXXX - X - 15 - XX - XX - XX - XX - 0

BASIC PART #

SPECIFY SHELL FINISH:

01 200 μ" TIN/LEAD OVER NICKEL

◆ 80 200 μ" TIN OVER NICKEL (RoHS)

◆ 15 10 μ" GOLD OVER NICKEL (RoHS)

SPECIFY CONTACT FINISH:

02 100 μ" TIN/LEAD OVER NICKEL

◆ 84 100 μ" TIN OVER NICKEL (RoHS)

◆ 27 30 μ" GOLD OVER NICKEL (RoHS)

SELECT CONTACT:

#22, #30, #32 or #43 CONTACT (DATA ON PAGES 252, 253 & 254)

(For alternate contact choices, see groups B and C on page 248)

