



Chipsmall Limited consists of a professional team with an average of over 10 year of expertise in the distribution of electronic components. Based in Hongkong, we have already established firm and mutual-benefit business relationships with customers from,Europe,America and south Asia,supplying obsolete and hard-to-find components to meet their specific needs.

With the principle of “Quality Parts,Customers Priority,Honest Operation,and Considerate Service”,our business mainly focus on the distribution of electronic components. Line cards we deal with include Microchip,ALPS,ROHM,Xilinx,Pulse,ON,Everlight and Freescale. Main products comprise IC,Modules,Potentiometer,IC Socket,Relay,Connector.Our parts cover such applications as commercial,industrial, and automotives areas.

We are looking forward to setting up business relationship with you and hope to provide you with the best service and solution. Let us make a better world for our industry!



Contact us

Tel: +86-755-8981 8866 Fax: +86-755-8427 6832

Email & Skype: info@chipsmall.com Web: www.chipsmall.com

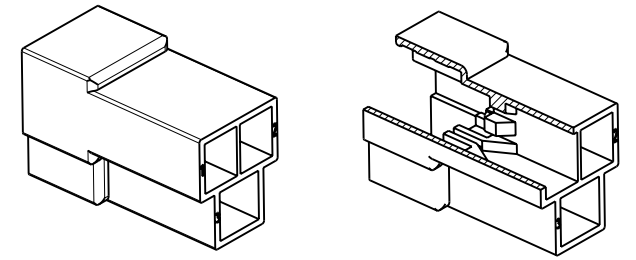
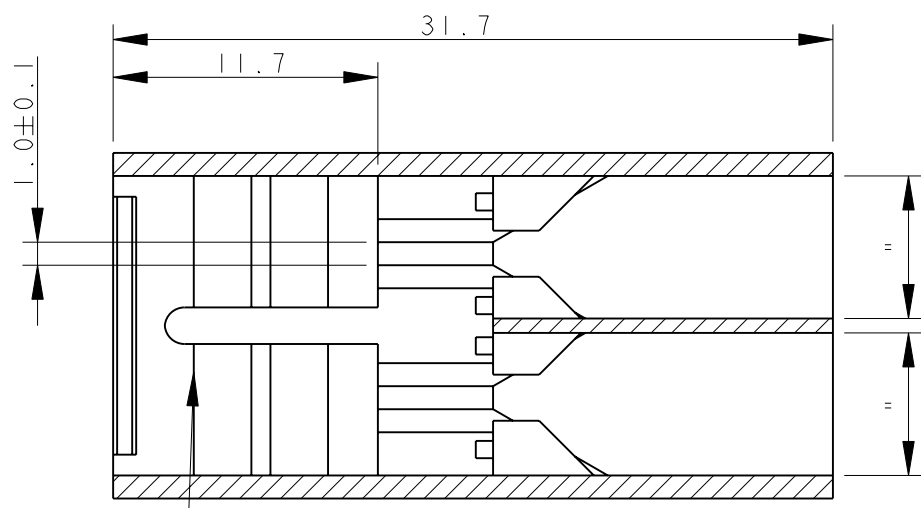
Address: A1208, Overseas Decoration Building, #122 Zhenhua RD., Futian, Shenzhen, China



THIS DRAWING IS UNPUBLISHED. RELEASED FOR PUBLICATION 2002
 © COPYRIGHT 2002 ALL RIGHTS RESERVED.

LOC	DIST	REVISIONS			
P	LTR	DESCRIPTION	DATE	DWN	APVD
S4	-	ADDED 3-...-0, ET00-0137-04	25 JUN 2004	HY	CT
S5	-	REVISED PER ECO-09-026495	19DEC2009	KK	AEG
S6	-	ECR-10-022530	14JUN11	KK	HMR

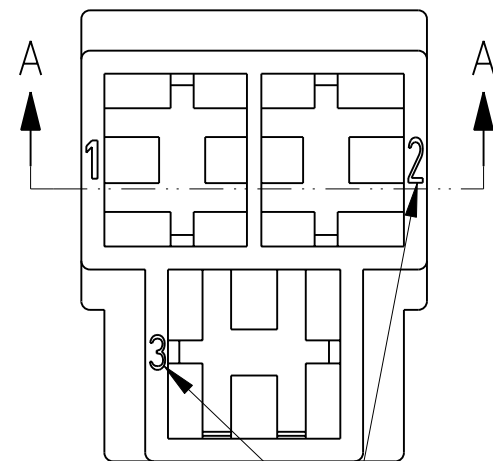
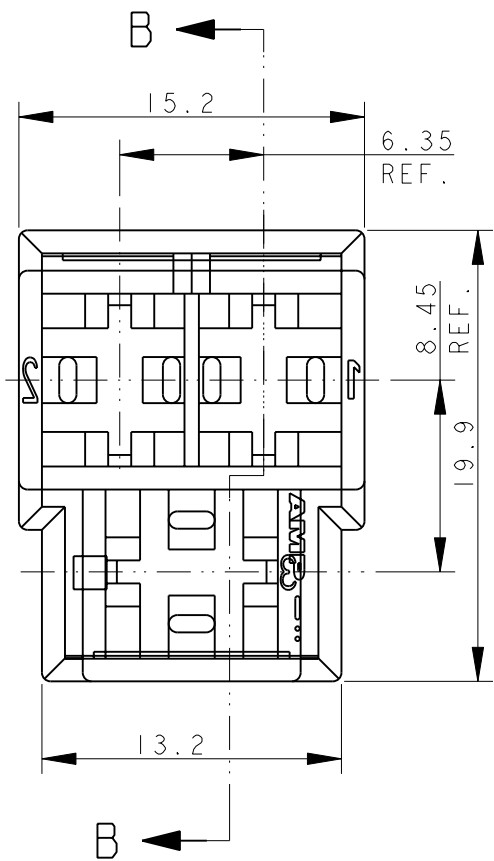
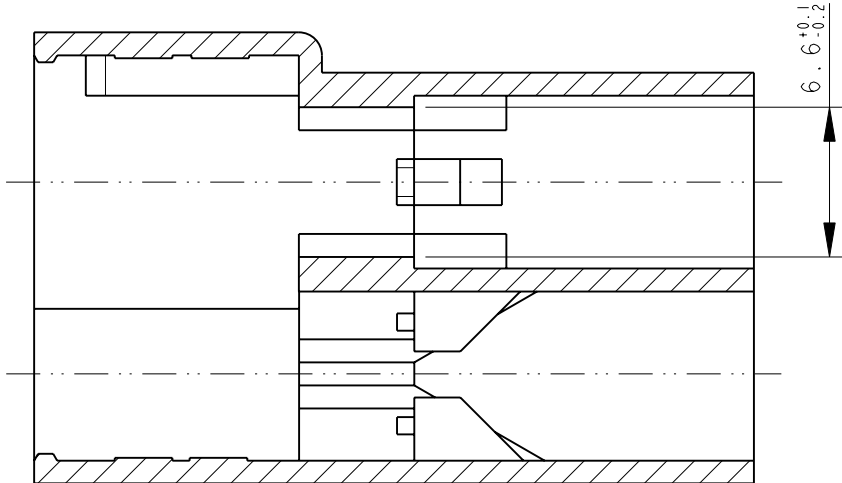
SECTION A - A



SCALE 1:1

TYPICAL CAVITY SUITABLE FOR .250" SR FASTIN-FASTON TAB CONTACT

SECTION B - B



CIRCUIT IDENTIFICATION

OBSOLETE	△3	NATURALE (NATURAL)	△1	3-180940-0	
OBSOLETE		NATURALE (NATURAL)	△2	2-180940-0	S
OBSOLETE		NATURALE (NATURAL)		1-180940-0	S
		GRIGIO (GRAY)		0-180940-7	S
		NERO (BLACK)		0-180940-5	S
		GIALLO (YELLOW)		0-180940-4	S
		BLU (BLUE)	△1	0-180940-3	S
OBSOLETE		ROSSO (RED)		0-180940-1	S
		NATURALE (NATURAL)		0-180940-0	S
NOTE		COLORE (COLOUR)	MATERIALE (MATERIAL)	PN	REV

- △1 PA 6.6 UNFILLED, UL 94-V2
- △2 PA 6 UNFILLED, GLOW WIRE TEST AT 750°C.
- △3 SAME AS 180940-0 BUT SPECIAL PACKAGING, ON CARTON BOX, TWO PLASTIC BAG WITH 1000 PIECES EACH.
- △4 OBSOLETE PARTS: OBSOLETE CIS STREAMLINING PER D.RENAUD/D.SINISI

THIS DRAWING IS A CONTROLLED DOCUMENT.		DWN H. YAALI 07AUG2002	TE Connectivity			
DIMENSIONS: mm		CHK C TARTARI				
TOLERANCES UNLESS OTHERWISE SPECIFIED:		APVD -	NAME FASTIN-FASTON* Connector, .250 sr. T TAB HOUSING 3 WAY			
0 PLC ±-		PRODUCT SPEC 108-20020				
1 PLC ±0.3		APPLICATION SPEC -	SIZE A3	CAGE CODE 00779	DRAWING NO C-180940	RESTRICTED TO -
2 PLC ±-		WEIGHT 3.1 g	SCALE 3:1		SHEET 1 OF 1	REV S6
3 PLC ±-		CUSTOMER DRAWING				
4 PLC ±-						
ANGLES ±2°						
FINISH SEE TABLE						