



Chipsmall Limited consists of a professional team with an average of over 10 year of expertise in the distribution of electronic components. Based in Hongkong, we have already established firm and mutual-benefit business relationships with customers from,Europe,America and south Asia,supplying obsolete and hard-to-find components to meet their specific needs.

With the principle of “Quality Parts,Customers Priority,Honest Operation,and Considerate Service”,our business mainly focus on the distribution of electronic components. Line cards we deal with include Microchip,ALPS,ROHM,Xilinx,Pulse,ON,Everlight and Freescale. Main products comprise IC,Modules,Potentiometer,IC Socket,Relay,Connector.Our parts cover such applications as commercial,industrial, and automotives areas.

We are looking forward to setting up business relationship with you and hope to provide you with the best service and solution. Let us make a better world for our industry!



Contact us

Tel: +86-755-8981 8866 Fax: +86-755-8427 6832

Email & Skype: info@chipsmall.com Web: www.chipsmall.com

Address: A1208, Overseas Decoration Building, #122 Zhenhua RD., Futian, Shenzhen, China



180XL VISUAL FAULT LOCATOR

FAST AND EASY FAULT FINDING



fiberTOOLS™

EFFICIENT.

QUICKLY AND EASILY LOCATE HIGH LOSSES AND FAULTS IN FIBER OPTIC CABLES

EXTENDED REACH.

UP TO 7km MEASUREMENT RANGE

VERSATILE.

PULSED AND CW MODE OF OPERATIONS

USA PHONE 800.642.2155
FAX 760.598.5634

CANADA PHONE 866.384.8813
FAX 800.524.2853

INT'L PHONE +1.815.397.7070
FAX +1.815.397.9247



GREENLEE®
COMMUNICATIONS

180XL

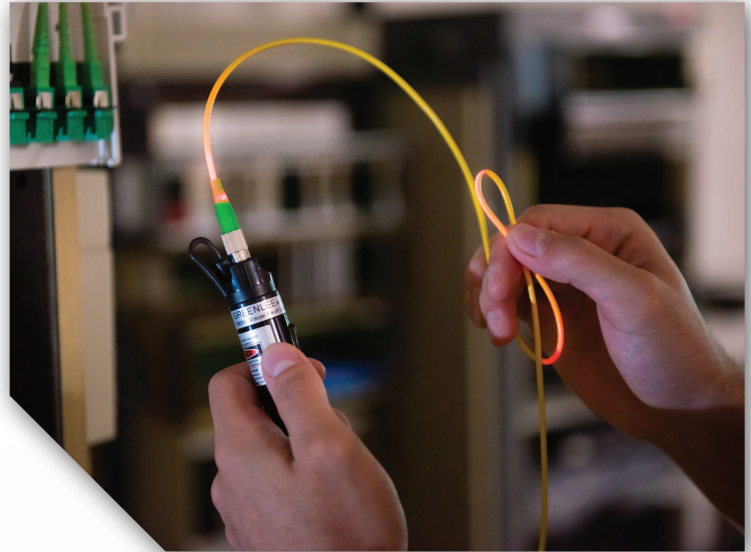
VISUAL FAULT LOCATOR

FOR PRODUCT VIDEOS, DEMONSTRATIONS
AND MORE, SCAN THIS QR CODE OR VISIT:
www.youtube.com/GreenleeDEMO



SPECIFICATIONS

Wavelength	650nm +/-10nm
Emitter Type	Fabry Perot
Output Power	0dBm
Laser Classification	Class 2
Range	7km
Modes of Operation	CW and 2Hz Modulation
Method of Display Operation	Red/Green LED
Fiber Type	Singlemode, Multimode
Connector Interface	2.5mm Universal, Optional 1.25mm adapter
Battery	AA (2 included)
Battery Life	80 Hours with 3.9Wh Batteries
Weight	0.26lbs, (120g) (not including batteries)
Dimensions	7.08" x 0.91" Dia (180mm x 23mm Dia)
Operating Temperature	-10°C to +45°C
Storage Temperature	-40°C to +70°C
Certifications	CE, CDRH



ORDERING INFORMATION

CAT NO.	UPC NO.	DESCRIPTION
180XL	03578	Visual Fault Locator
1.25mm Adapter	03579	1.25mm Adapter for LC and MU connectors



www.greenleecommunications.com MA6247 rev. 05/15

1390 Aspen Way • Vista, CA 92081 • USA • 800.642.2155

©2015 Greenlee Textron Inc. • An ISO 9001 Company • Printed in USA

Greenlee Textron Inc. is a subsidiary of Textron Inc.