



Chipsmall Limited consists of a professional team with an average of over 10 year of expertise in the distribution of electronic components. Based in Hongkong, we have already established firm and mutual-benefit business relationships with customers from,Europe,America and south Asia,supplying obsolete and hard-to-find components to meet their specific needs.

With the principle of "Quality Parts,Customers Priority,Honest Operation,and Considerate Service",our business mainly focus on the distribution of electronic components. Line cards we deal with include Microchip,ALPS,ROHM,Xilinx,Pulse,ON,Everlight and Freescale. Main products comprise IC,Modules,Potentiometer,IC Socket,Relay,Connector.Our parts cover such applications as commercial,industrial, and automotives areas.

We are looking forward to setting up business relationship with you and hope to provide you with the best service and solution. Let us make a better world for our industry!



## Contact us

Tel: +86-755-8981 8866 Fax: +86-755-8427 6832

Email & Skype: info@chipsmall.com Web: www.chipsmall.com

Address: A1208, Overseas Decoration Building, #122 Zhenhua RD., Futian, Shenzhen, China



## PCB terminal block - PTSM 0,5/ 6-2,5-H SMD WH R44 - 1814676

Please be informed that the data shown in this PDF Document is generated from our Online Catalog. Please find the complete data in the user's documentation. Our General Terms of Use for Downloads are valid (<http://download.phoenixcontact.com>)

PCB terminal block, Nominal current: 6 A, Nom. voltage: 250 V, Pitch: 2.5 mm, Number of positions: 6, Connection method: Spring-cage connection, Mounting: SMD/THT/THR, Conductor/PCB connection direction: 0 °, Color: White



### Key commercial data

|                        |          |
|------------------------|----------|
| Packing unit           | 1 pc     |
| Minimum order quantity | 770 pc   |
| Custom tariff number   | 85369010 |
| Country of origin      | India    |

### Technical data

#### Dimensions

|             |         |
|-------------|---------|
| Length      | 9 mm    |
| Height      | 5 mm    |
| Pitch       | 2.5 mm  |
| Dimension a | 12.5 mm |
| Pin spacing | 2.5 mm  |

#### General

|                                  |                   |
|----------------------------------|-------------------|
| Range of articles                | PTSM 0,5/..-H-SMD |
| Insulating material group        | I                 |
| Rated surge voltage (III/3)      | 2.5 kV            |
| Rated surge voltage (III/2)      | 2.5 kV            |
| Rated surge voltage (II/2)       | 2.5 kV            |
| Rated voltage (III/3)            | 63 V              |
| Rated voltage (III/2)            | 250 V             |
| Rated voltage (II/2)             | 320 V             |
| Connection in acc. with standard | EN-VDE            |

## PCB terminal block - PTSM 0,5/ 6-2,5-H SMD WH R44 - 1814676

### Technical data

#### General

|   |                     |
|---|---------------------|
| Nominal current $I_N$                   | 6 A                 |
| Nominal cross section                   | 0.5 mm <sup>2</sup> |
| Maximum load current                    | 6 A                 |
| Insulating material                     | PA                  |
| Solder pin surface                      | Sn                  |
| Inflammability class according to UL 94 | V0                  |
| Stripping length                        | 6 mm                |
| Number of positions                     | 6                   |

#### Connection data

|  |                      |
|--|----------------------|
| Conductor cross section solid min.   | 0.14 mm <sup>2</sup> |
| Conductor cross section solid max.   | 0.5 mm <sup>2</sup>  |
| Conductor cross section stranded min.                                      | 0.2 mm <sup>2</sup>  |
| Conductor cross section stranded max.                                      | 5 mm <sup>2</sup>    |
| Conductor cross section stranded, with ferrule without plastic sleeve min. | 0.25 mm <sup>2</sup> |
| Conductor cross section stranded, with ferrule without plastic sleeve max. | 0.5 mm <sup>2</sup>  |
| Conductor cross section AWG/kcmil min.                                     | 26                   |
| Conductor cross section AWG/kcmil max                                      | 20                   |
| Minimum AWG according to UL/CUL  | 26                   |
| Maximum AWG according to UL/CUL  | 20                   |

### Classifications

#### eCl@ss

|            |          |
|------------|----------|
| eCl@ss 4.0 | 27141109 |
| eCl@ss 4.1 | 27141109 |
| eCl@ss 5.0 | 27141190 |
| eCl@ss 5.1 | 27141190 |
| eCl@ss 6.0 | 27261101 |
| eCl@ss 7.0 | 27440401 |
| eCl@ss 8.0 | 27440401 |

#### ETIM

|          |          |
|----------|----------|
| ETIM 3.0 | EC001121 |
| ETIM 4.0 | EC002643 |
| ETIM 5.0 | EC002637 |

# PCB terminal block - PTSM 0,5/ 6-2,5-H SMD WH R44 - 1814676

## Classifications

### UNSPSC

|               |          |
|---------------|----------|
| UNSPSC 6.01   | 30211801 |
| UNSPSC 7.0901 | 39121432 |
| UNSPSC 11     | 39121432 |
| UNSPSC 12.01  | 39121432 |
| UNSPSC 13.2   | 39121432 |

## Approvals

### Approvals

#### Approvals

GOST / UL Recognized / UL Recognized / cUL Recognized / cULus Recognized

#### Ex Approvals

#### Approvals submitted

## Approval details

|      |
|------|
| GOST |
|------|

|                                |       |
|--------------------------------|-------|
| UL Recognized                  |       |
|                                | B     |
| mm <sup>2</sup> /AWG/kcmil     | 26-20 |
| Nominal current I <sub>N</sub> | 5 A   |
| Nominal voltage U <sub>N</sub> | 150 V |

# PCB terminal block - PTSM 0,5/ 6-2,5-H SMD WH R44 - 1814676

## Approvals

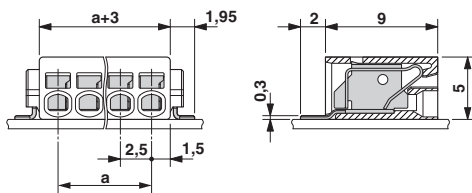
|                                |       |
|--------------------------------|-------|
| UL Recognized                  |       |
|                                | B     |
| mm <sup>2</sup> /AWG/kcmil     | 26-20 |
| Nominal current I <sub>N</sub> | 5 A   |
| Nominal voltage U <sub>N</sub> | 150 V |

|                                |       |
|--------------------------------|-------|
| cUL Recognized                 |       |
|                                | B     |
| mm <sup>2</sup> /AWG/kcmil     | 26-20 |
| Nominal current I <sub>N</sub> | 5 A   |
| Nominal voltage U <sub>N</sub> | 150 V |

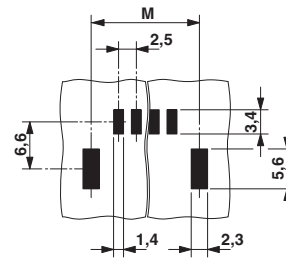
|                  |  |
|------------------|--|
| cULus Recognized |  |
|------------------|--|

## Drawings

Dimensioned drawing



Drilling diagram



Dimension M: 17.7 mm

# PCB terminal block - PTSM 0,5/ 6-2,5-H SMD WH R44 - 1814676

Diagram

