



Chipsmall Limited consists of a professional team with an average of over 10 year of expertise in the distribution of electronic components. Based in Hongkong, we have already established firm and mutual-benefit business relationships with customers from,Europe,America and south Asia,supplying obsolete and hard-to-find components to meet their specific needs.

With the principle of “Quality Parts,Customers Priority,Honest Operation,and Considerate Service”,our business mainly focus on the distribution of electronic components. Line cards we deal with include Microchip,ALPS,ROHM,Xilinx,Pulse,ON,Everlight and Freescale. Main products comprise IC,Modules,Potentiometer,IC Socket,Relay,Connector.Our parts cover such applications as commercial,industrial, and automotives areas.

We are looking forward to setting up business relationship with you and hope to provide you with the best service and solution. Let us make a better world for our industry!



Contact us

Tel: +86-755-8981 8866 Fax: +86-755-8427 6832

Email & Skype: info@chipsmall.com Web: www.chipsmall.com

Address: A1208, Overseas Decoration Building, #122 Zhenhua RD., Futian, Shenzhen, China



4

3

2

1

THIS DRAWING IS UNPUBLISHED.

RELEASED FOR PUBLICATION

© COPYRIGHT - By -

ALL RIGHTS RESERVED.

LOCAD

DIST00

REVISIONS

P	LTR	DESCRIPTION	DATE	DWN	APVD
	A2	REVISED PER ECO-15-004048	16MAR2015	NK	RH

MATERIALS

COMPONENT NAME	BASE MATERIAL	FINISH
CASE	LCP, BLACK, UL94 V-0	
TERMINAL, WIRE LUG (GOLD)	BRASS	GOLD OVER NICKEL
TERMINAL, PC & RA (GOLD)	BRASS	GOLD OVER NICKEL IN CONTACT AREA, TIN OVER NICKEL IN SOLDER AREA
TERMINAL, WIRE LUG & PC (SILVER)	SILVER CLAD COPPER	SILVER OVER NICKEL
CONTACT (GOLD)	COPPER ALLOY OR BRASS	GOLD OVER NICKEL
CONTACT (SILVER)	SILVER CLAD COPPER OR COPPER	SILVER OVER NICKEL
FRAME	STEEL	TIN OVER COPPER
SPRING	MUSIC WIRE	
PLUNGER BUTTON	NYLON 6/6, BLACK, RED OR BLUE, UL94 HB	
GUIDE, CC & FF SWITCHES ONLY	NYLON 6/6, WHITE	

SPECIFICATIONS

RATING	GOLD: .4VA MAX. @ 20VDC OR PEAK AC RESISITIVE
	SILVER: 1A @ 125VAC OR 28 VDC RESISTIVE
INITIAL TERMINATION RESISTANCE	20 MILLIOHMS MAX.
INSULATION RESISTANCE	1,000 MEGOHMS MIN @ 500 VDC
DIELECTRIC STRENGTH	1,000 VOLTS RMS AT SEA LEVEL
TIMING	BREAK BEFORE MAKE
PLUNGER TRAVEL	.030
ACTUATION FORCE	50 TO 400 GRAMS
LIFE EXPECTANCY	.4VA: 100,000
	1A: 60,000
OPERATING TEMPERATURE	-30°C TO +95°C
STORAGE TEMPERATURE	-30°C TO +95°C
TERMINAL SEAL	SINGLE POLE: EPOXY
	DOUBLE POLE: EPOXY OPTIONAL

NOTES:

1. TERMINAL NUMBERS ARE FOR REFERNCE ONLY AND DO NOT APPEAR ON SWITCHES

2. ALL MATERIALS AND FINISHES COMPLY WITH EU DIRECTIVE 2002/95/ES OF 27JAN2003 (ROHS)

3

CENTER TERMINAL PRESENT ON DOUBLE THROW SWITCHES ONLY.

4

OBSOLETE.

PART NUMBER MATRIX

MODEL	POLES	RATING	FUNCTION	PLATING	TERMINATIONS	BUTTON COLOR	04
TP	1	1=GOLD .4VA	C=SPST MOMENTARY	G=GOLD	BLANK=WIRE LUG	0=BLACK	
	2(1+1)	3=SILVER 1 AMP	F=SPDT MOMENTARY	BLANK=SILVER	PC=PRINTED CIRCUIT	2=RED	
					RA=RIGHT ANGLE	6=BLUE	

NOTES:
1. SILVER ONLY AVAILABLE IN WIRE LUG AND PC TERMINATIONS

P/N	ALCO P/N	POLES	THROWS	PLATING	TERMINALS	BUTTON COLOR	FUNCTION		CONNECTED TERMINALS	
1825095-1	TP11CGPC004	1	1	GOLD	PC	BLACK	OFF	MOM	OFF	1-3
1825095-2	TP11CGPC204	1	1	GOLD	PC	RED	OFF	MOM	OFF	1-3
1825095-3	TP11CGRA004	1	1	GOLD	RIGHT ANGLE	BLACK	OFF	MOM	OFF	1-3
<div>4</div> 1825095-4	TP11CGRA204	1	1	GOLD	RIGHT ANGLE	RED	OFF	MOM	OFF	1-3
<div>4</div> 1825095-5	TP11CGRA604	1	1	GOLD	RIGHT ANGLE	BLUE	OFF	MOM	OFF	1-3
1825095-6	TP11FGPC004	1	2	GOLD	PC	BLACK	ON	MOM	1-2	2-3
<div>4</div> 1825095-7	TP11FGPC204	1	2	GOLD	PC	RED	ON	MOM	1-2	2-3
<div>4</div> 1825095-8	TP11FGRA004	1	2	GOLD	RIGHT ANGLE	BLACK	ON	MOM	1-2	2-3
<div>4</div> 1825095-9	TP11FGRA204	1	2	GOLD	RIGHT ANGLE	RED	ON	MOM	1-2	2-3
<div>4</div> 1-1825095-0	TP11FGRA604	1	2	GOLD	RIGHT ANGLE	BLUE	ON	MOM	1-2	2-3
<div>4</div> 1-1825095-1	TP21CCGRA004	2(1+1)	1	GOLD	RIGHT ANGLE	BLACK	OFF	MOM	OFF	1-3
<div>4</div> 1-1825095-2	TP21CCGRA204	2(1+1)	1	GOLD	RIGHT ANGLE	RED	OFF	MOM	OFF	1-3
<div>4</div> 1-1825095-3	TP21FFGRA004	2(1+1)	2	GOLD	RIGHT ANGLE	BLACK	ON	MOM	1-2	2-3

THIS DRAWING IS A CONTROLLED DOCUMENT.

DIMENSIONS:
INCHES

MATERIAL-

TOLERANCES UNLESS OTHERWISE SPECIFIED:

0 PLC ± -

1 PLC ± -

2 PLC ± -

3 PLC ± .010

4 PLC ± -

ANGLES ± 3°

FINISH-

DWN12-1-05RAGHU

CHK-

APVD-

PRODUCT SPEC-

APPLICATION SPEC-

WEIGHT-

CUSTOMER DRAWING

TE Connectivity

NAMEPUSHBUTTON SWITCH, TP SERIES

SIZEA2

CAGE CODE00779

DRAWING NOC=1825095

RESTRICTED TO-

SCALE4:1

SHEET1 of 3

REVA2

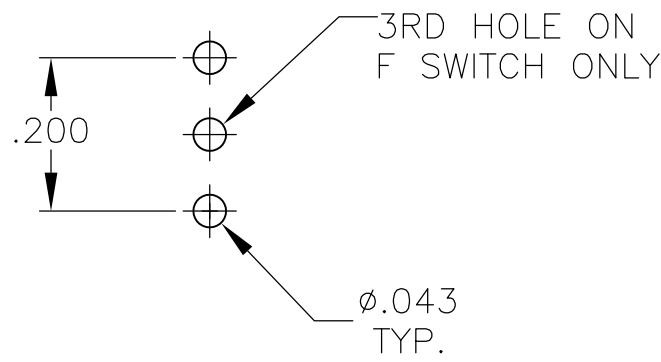
1825095

B

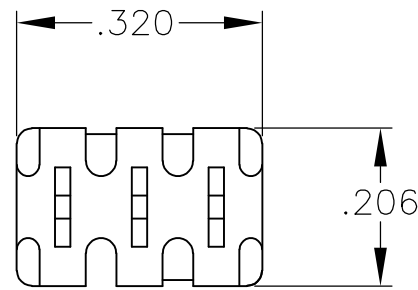
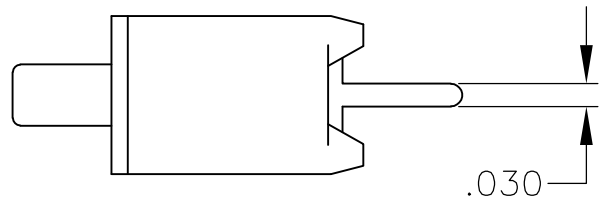
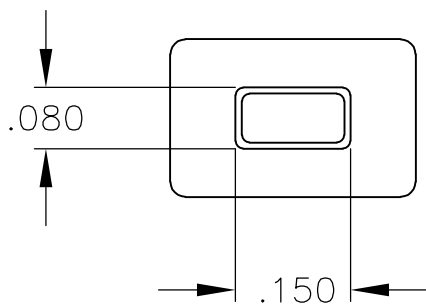
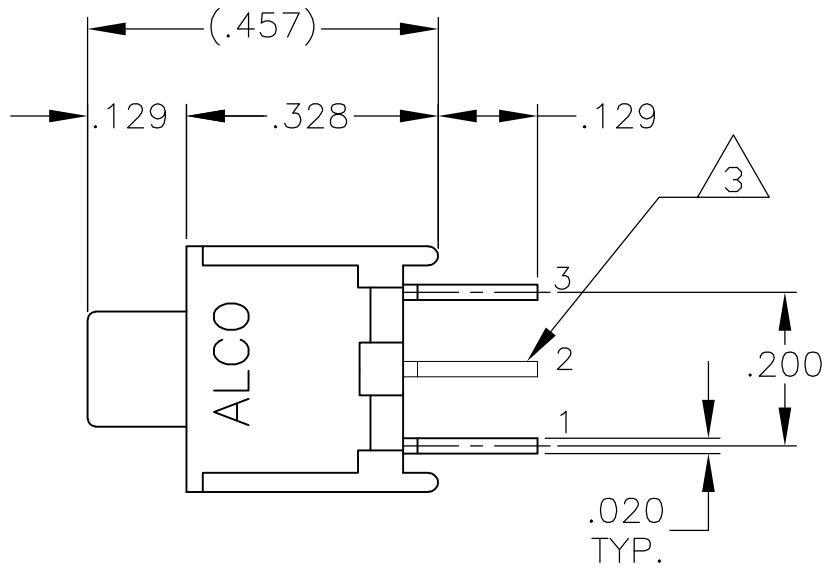
A

1471-9 (3/11)


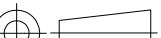
LOC	DIST	REVISIONS					
		P	LTR	DESCRIPTION	DATE	DWN	APVD
AD	00		—	SEE SHEET 1	—	—	—



RECOMMENDED HOLE LAYOUT
TOLERANCE ±.002 UNLESS
OTHERWISE NOTED

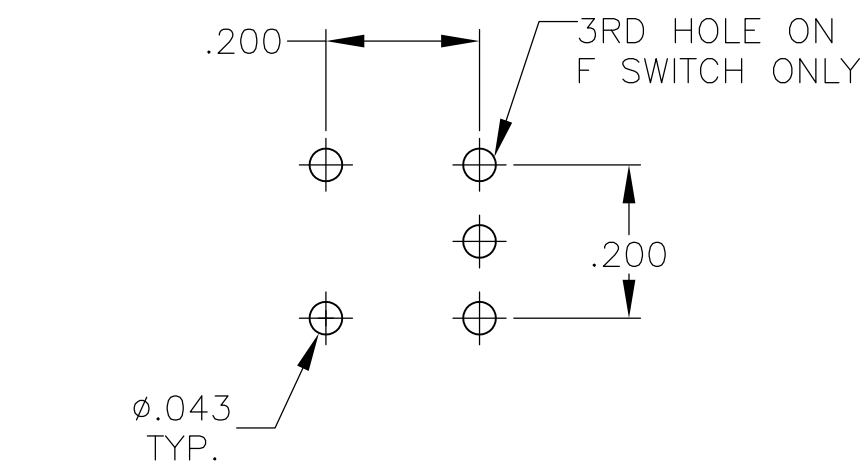


TP11CGPC
TP11FGPC

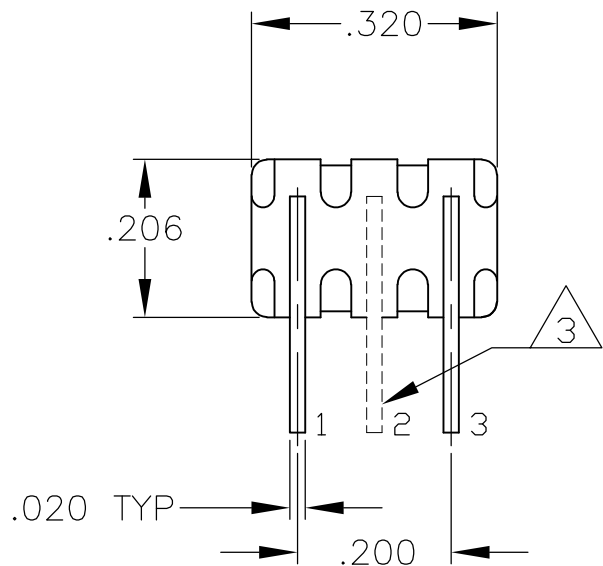
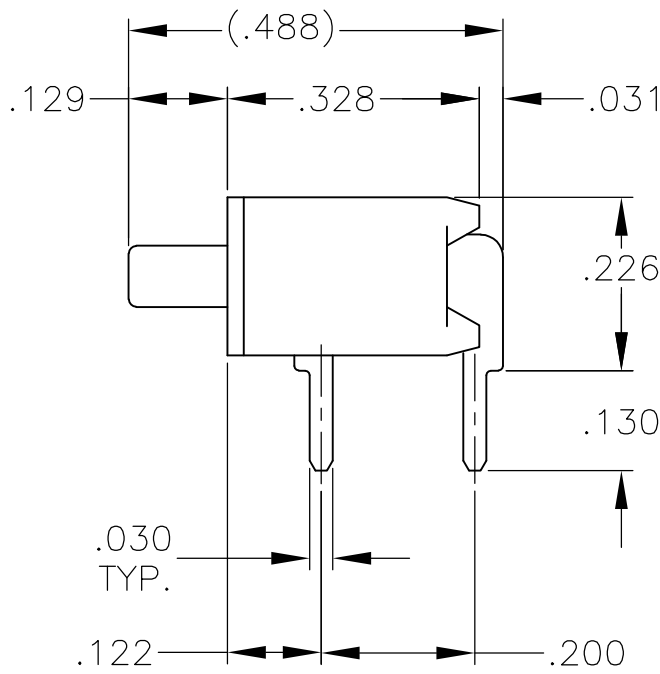
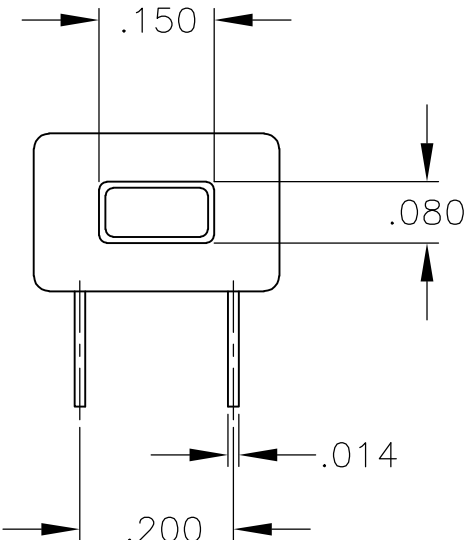
THIS DRAWING IS A CONTROLLED DOCUMENT.		DWN RAGHU	12-1-05	 TE Connectivity			
DIMENSIONS: INCHES		CHK —	—				
	TOLERANCES UNLESS OTHERWISE SPECIFIED:		APVD —	NAME PUSHBUTTON SWITCH, TP SERIES			
	0 PLC ± — 1 PLC ± — 2 PLC ± — 3 PLC ± .010 4 PLC ± —		PRODUCT SPEC —				
	ANGLES ± 3°		APPLICATION SPEC —	SIZE A2	CAGE CODE 00779	DRAWING NO C=1825095	RESTRICTED TO —
	MATERIAL —	FINISH —	WEIGHT —				
CUSTOMER DRAWING			SCALE 4:1		SHEET 2 of 3	REV A2	

LOC	DIST	REVISIONS					
AD	00	P	LTR	DESCRIPTION	DATE	DWN	APVD
			—	SEE SHEET 1	—	—	—

D



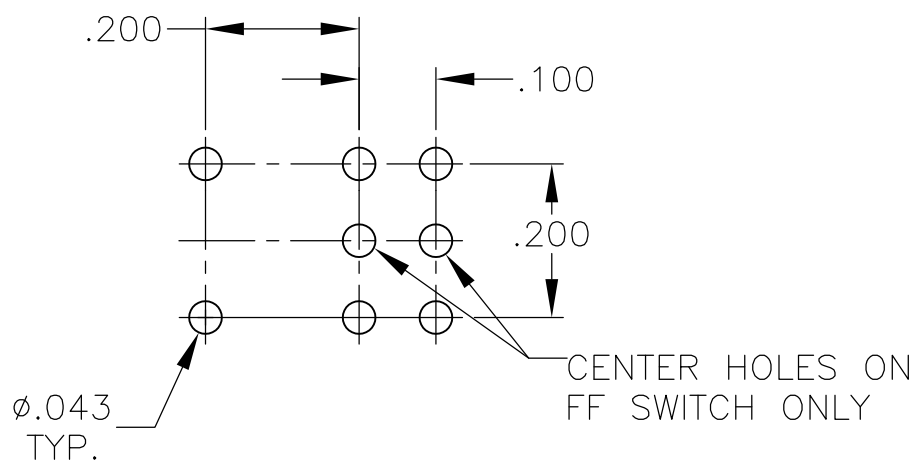
RECOMMENDED HOLE LAYOUT
TOLERANCE ±.002 UNLESS
OTHERWISE NOTED



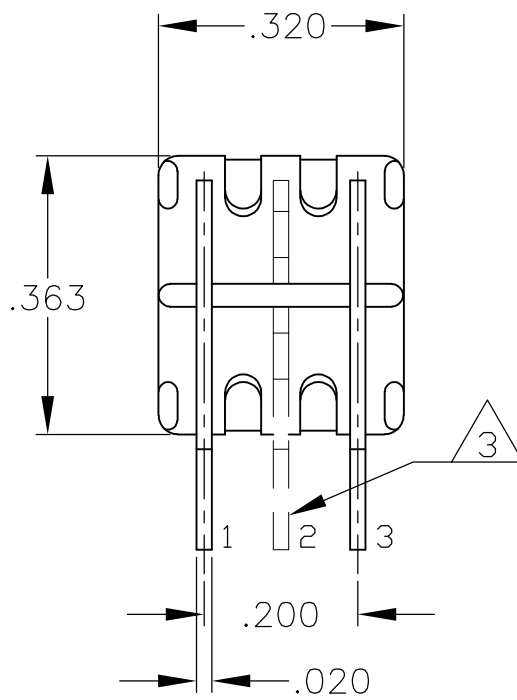
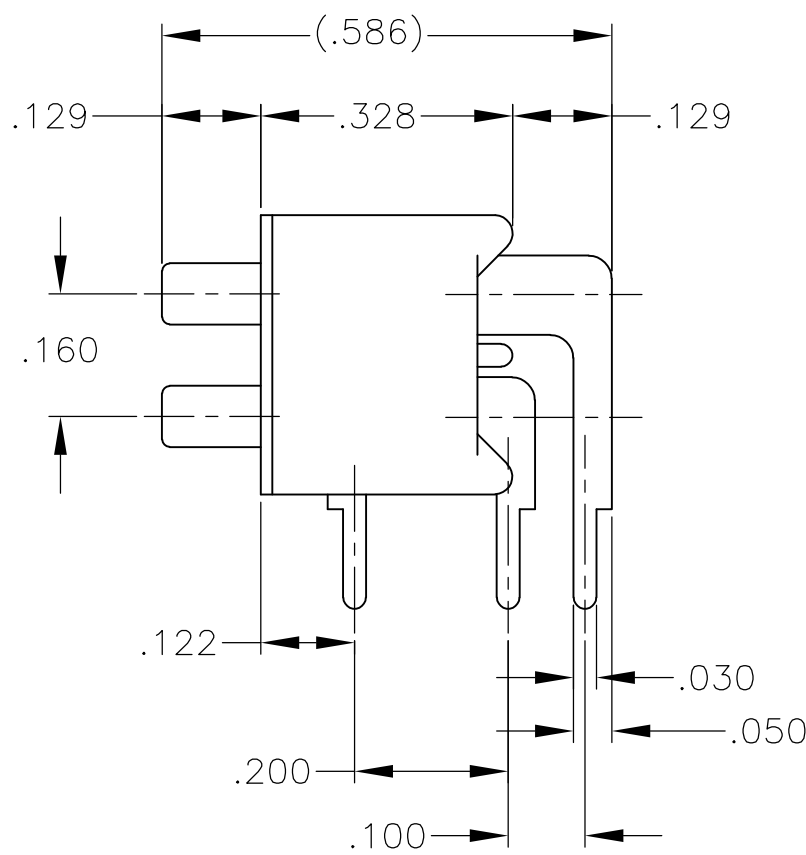
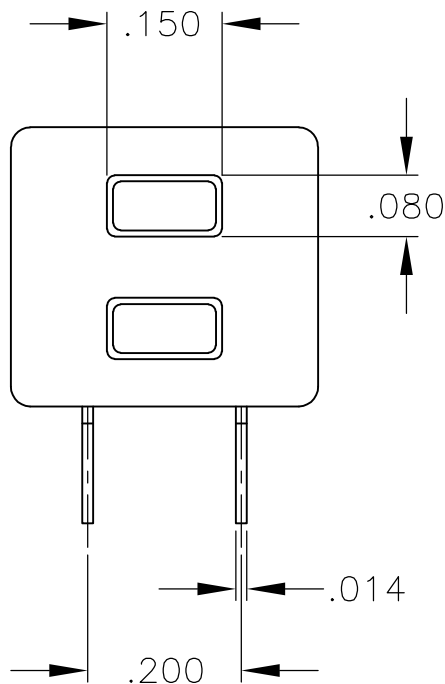
TP11CGRA
TP11FGRA

C

B



RECOMMENDED HOLE LAYOUT
TOLERANCE ±.002 UNLESS
OTHERWISE NOTED



TP21CCGRA
TP21FFGRA

A

THIS DRAWING IS A CONTROLLED DOCUMENT.		DWN	12-1-05	TE Connectivity			
		CHK	-				
DIMENSIONS: INCHES		APVD	-	NAME			
		PRODUCT SPEC	-	PUSHBUTTON SWITCH, TP SERIES			
		APPLICATION SPEC	-				
		WEIGHT	-	SIZE	CAGE CODE	DRAWING NO	RESTRICTED TO
MATERIAL		FINISH	-	A2	00779	C=1825095	-
		CUSTOMER DRAWING		SCALE	1:1	SHEET	3 OF 3
						REV	A2