



Chipsmall Limited consists of a professional team with an average of over 10 year of expertise in the distribution of electronic components. Based in Hongkong, we have already established firm and mutual-benefit business relationships with customers from,Europe,America and south Asia,supplying obsolete and hard-to-find components to meet their specific needs.

With the principle of “Quality Parts,Customers Priority,Honest Operation,and Considerate Service”,our business mainly focus on the distribution of electronic components. Line cards we deal with include Microchip,ALPS,ROHM,Xilinx,Pulse,ON,Everlight and Freescale. Main products comprise IC,Modules,Potentiometer,IC Socket,Relay,Connector.Our parts cover such applications as commercial,industrial, and automotives areas.

We are looking forward to setting up business relationship with you and hope to provide you with the best service and solution. Let us make a better world for our industry!



## Contact us

Tel: +86-755-8981 8866 Fax: +86-755-8427 6832

Email & Skype: info@chipsmall.com Web: www.chipsmall.com

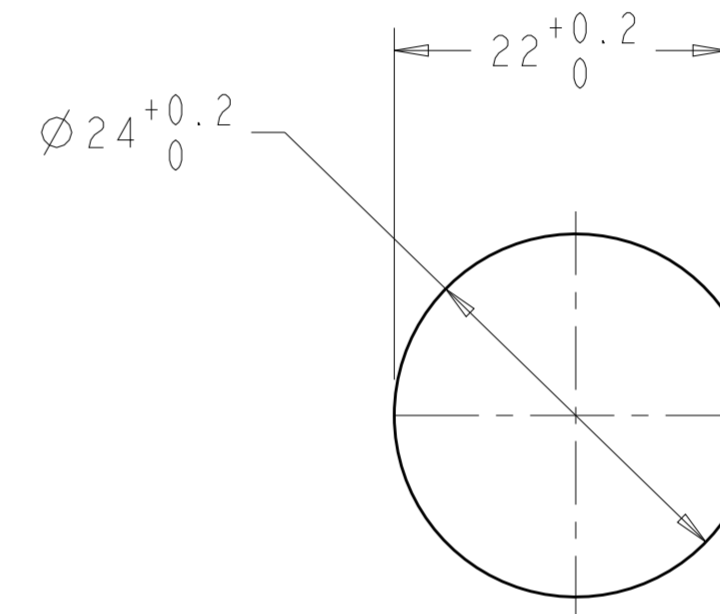
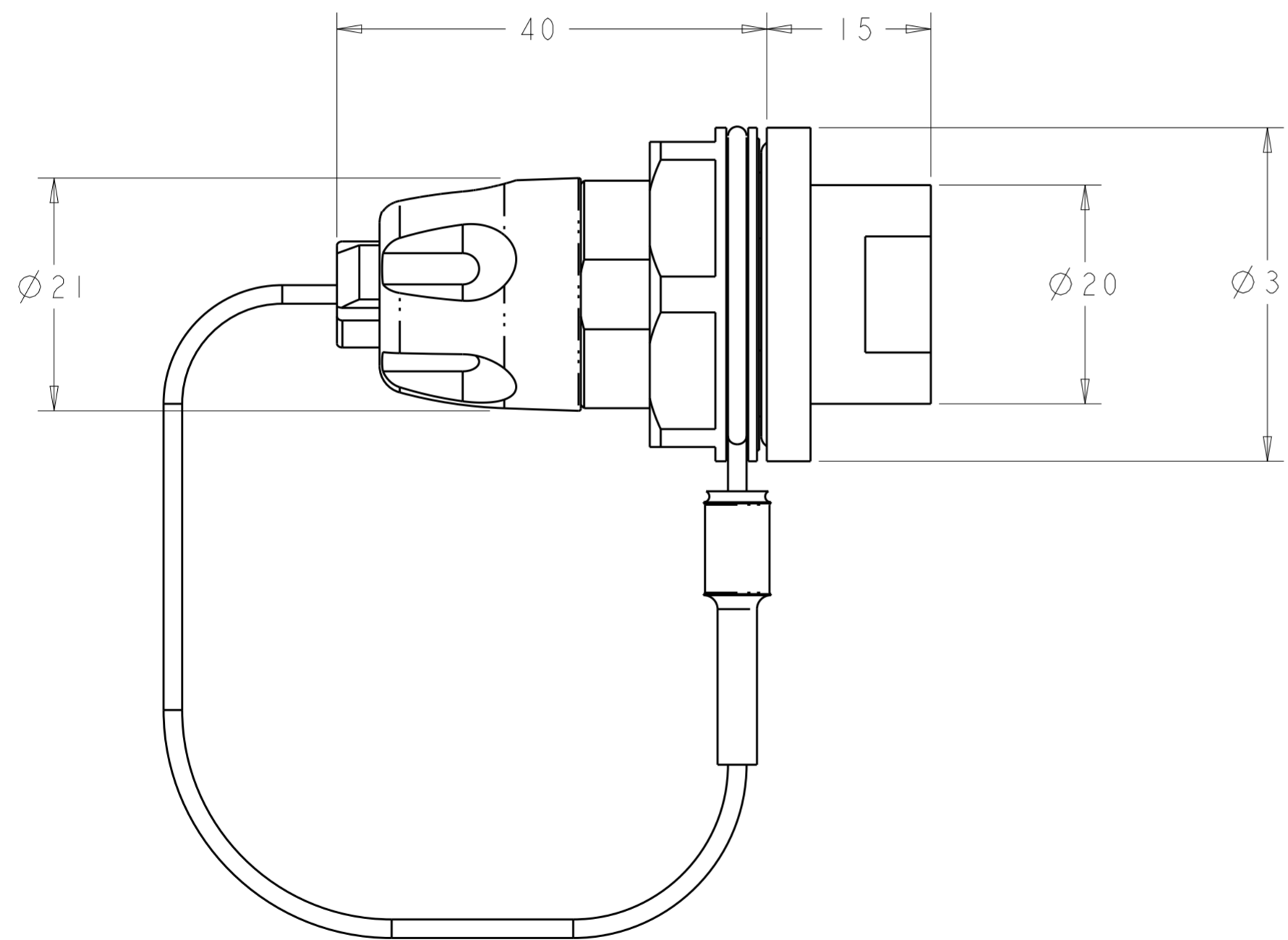
Address: A1208, Overseas Decoration Building, #122 Zhenhua RD., Futian, Shenzhen, China



THIS DRAWING IS UNPUBLISHED. RELEASED FOR PUBLICATION 20  
 © COPYRIGHT 20 BY - ALL RIGHTS RESERVED.

REVISIONS				
P	LTR	DESCRIPTION	DATE	APVD
	A2	ECR-15-009282	30JUL2015	KG DW

- ASSEMBLY SHOWN FOR REFERENCE ONLY. SHIPPED LOOSE PIECE AS SHOWN ON PAGE 2.
- ALL ASSEMBLY DIMENSION ARE FOR REFERENCE ONLY.
- COMPLETE THE CONNECTOR ASSEMBLY BY ADDING EACH OF THE FOLLOWING PRO BEAM MINI KITS:
  - EXPANDED BEAM INSERT ASSEMBLY KIT
  - FERRULE KIT, ONE PER FIBER
- PANEL SHOULD BE BETWEEN 1mm AND 6mm THICKNESS.
- THIS PRODUCT HAS NOT COMPLETED VALIDATION TESTING.



RECOMMENDED PANEL CUT-OUT

**SUPERSEDED BY:**  
1828699-4

BLACK ZINC-NICKEL	ALUMINUM	1838699-4
NONE	NICKEL ALUMINUM BRONZE	1828699-3
OLIVE DRAB ZINC	ALUMINUM	1828699-2
HARD ANODIZE	ALUMINUM	1828699-1
HOUSING FINISH	HOUSING ALLOY	PART NUMBER

DIMENSIONS:		TOLERANCES UNLESS OTHERWISE SPECIFIED:		DWN 20 JUN 2005		CHK 24 JUN 2005		APVD 24 JUN 2005		NAME	
mm	0 PLC	±		K. GLATFELTER						D. WERTMAN	
	1 PLC	±		D. WERTMAN						D. WERTMAN	
	2 PLC	±								D. WERTMAN	
	3 PLC	±								D. WERTMAN	
	4 PLC	±								D. WERTMAN	
	ANGLES	±								D. WERTMAN	
	FINISH									D. WERTMAN	
MATERIAL	-	-	-							D. WERTMAN	
	-	-	-							D. WERTMAN	

**STE** TE Connectivity

CONNECTOR SHELL KIT, D-HOLE BULKHEAD, PRO BEAM MINI

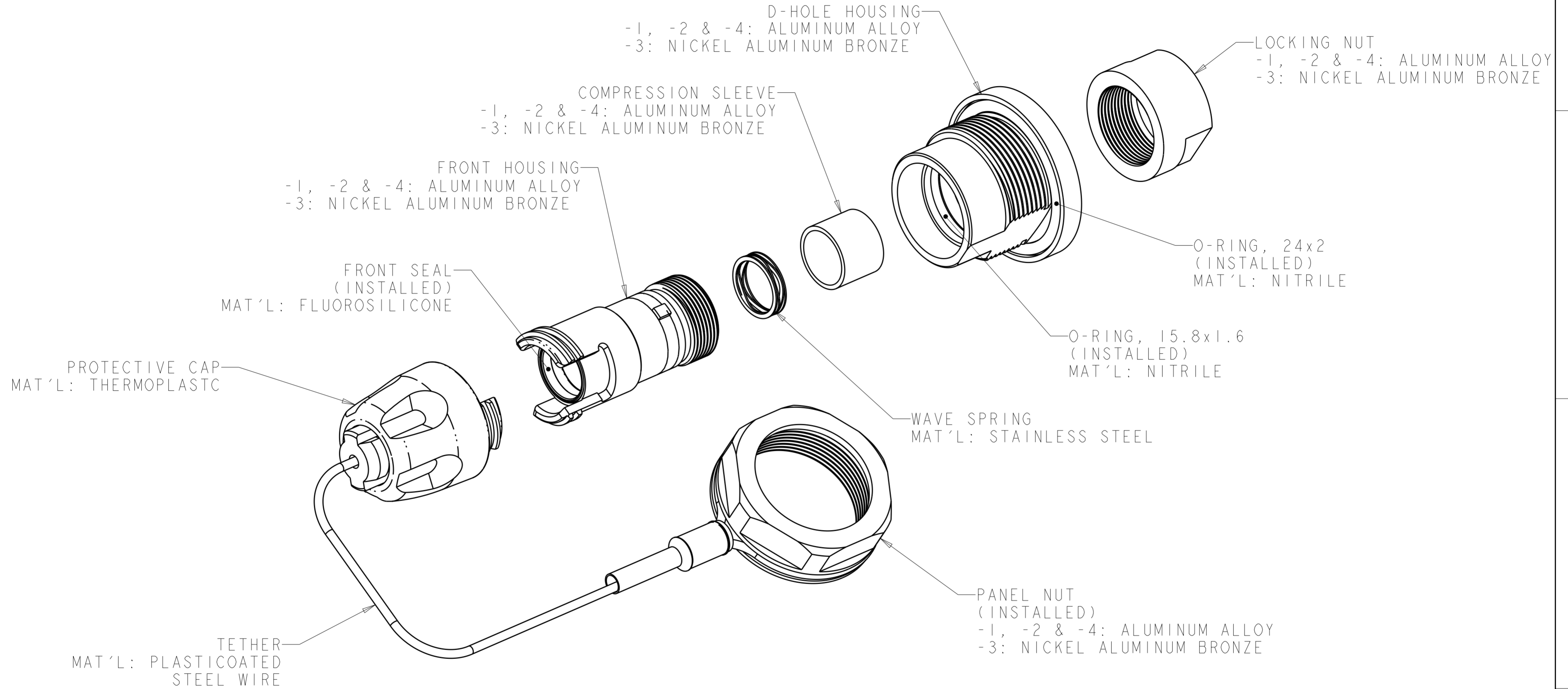
SIZE: A2 CAGE CODE: 00779 DRAWING NO: C-1828699 RESTRICTED TO: -

Customer Drawing SCALE: 2:1 SHEET 1 OF 2 REV: A2

THIS DRAWING IS UNPUBLISHED. RELEASED FOR PUBLICATION 20  
 © COPYRIGHT 20 BY - ALL RIGHTS RESERVED.

REVISIONS				
P	LTR	DESCRIPTION	DATE	APVD
-		SEE SHEET 1	-	-

1. SHIPPED LOOSE PIECE AS SHOWN.



THIS DRAWING IS A CONTROLLED DOCUMENT.		DWN K. GLATFELTER 20 JUN 2005	TE Connectivity	
		CHK D. WERTMAN 24 JUN 2005		
		APVD D. WERTMAN 24 JUN 2005	NAME CONNECTOR SHELL KIT, D-HOLE BULKHEAD, PRO BEAM MINI	
DIMENSIONS: mm		PRODUCT SPEC	SIZE	CAGE CODE
TOLERANCES UNLESS OTHERWISE SPECIFIED: 0 PLC ± 1 PLC ± 2 PLC ± 3 PLC ± 4 PLC ± ANGLES ± FINISH		APPLICATION SPEC	A200779	C-1828699
MATERIAL		WEIGHT	RESTRICTED TO	
		Customer Drawing	SCALE 2:1	SHEET 2 OF 2
				REV A2