



Chipsmall Limited consists of a professional team with an average of over 10 year of expertise in the distribution of electronic components. Based in Hongkong, we have already established firm and mutual-benefit business relationships with customers from,Europe,America and south Asia,supplying obsolete and hard-to-find components to meet their specific needs.

With the principle of “Quality Parts,Customers Priority,Honest Operation,and Considerate Service”,our business mainly focus on the distribution of electronic components. Line cards we deal with include Microchip,ALPS,ROHM,Xilinx,Pulse,ON,Everlight and Freescale. Main products comprise IC,Modules,Potentiometer,IC Socket,Relay,Connector.Our parts cover such applications as commercial,industrial, and automotives areas.

We are looking forward to setting up business relationship with you and hope to provide you with the best service and solution. Let us make a better world for our industry!



Contact us

Tel: +86-755-8981 8866 Fax: +86-755-8427 6832

Email & Skype: info@chipsmall.com Web: www.chipsmall.com

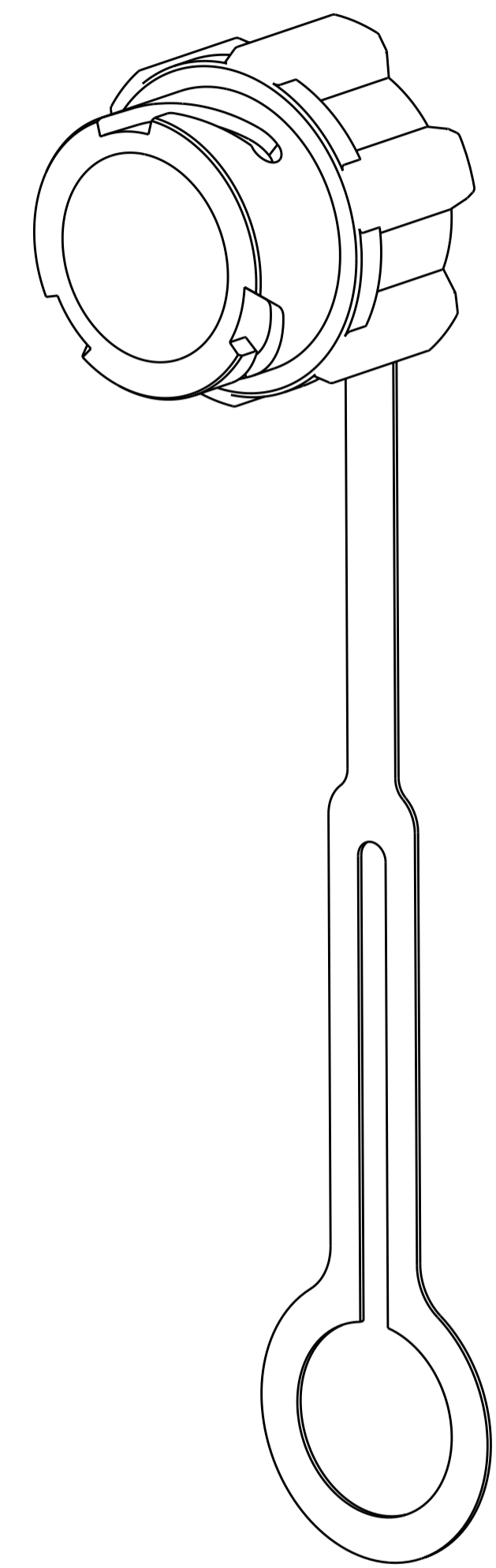
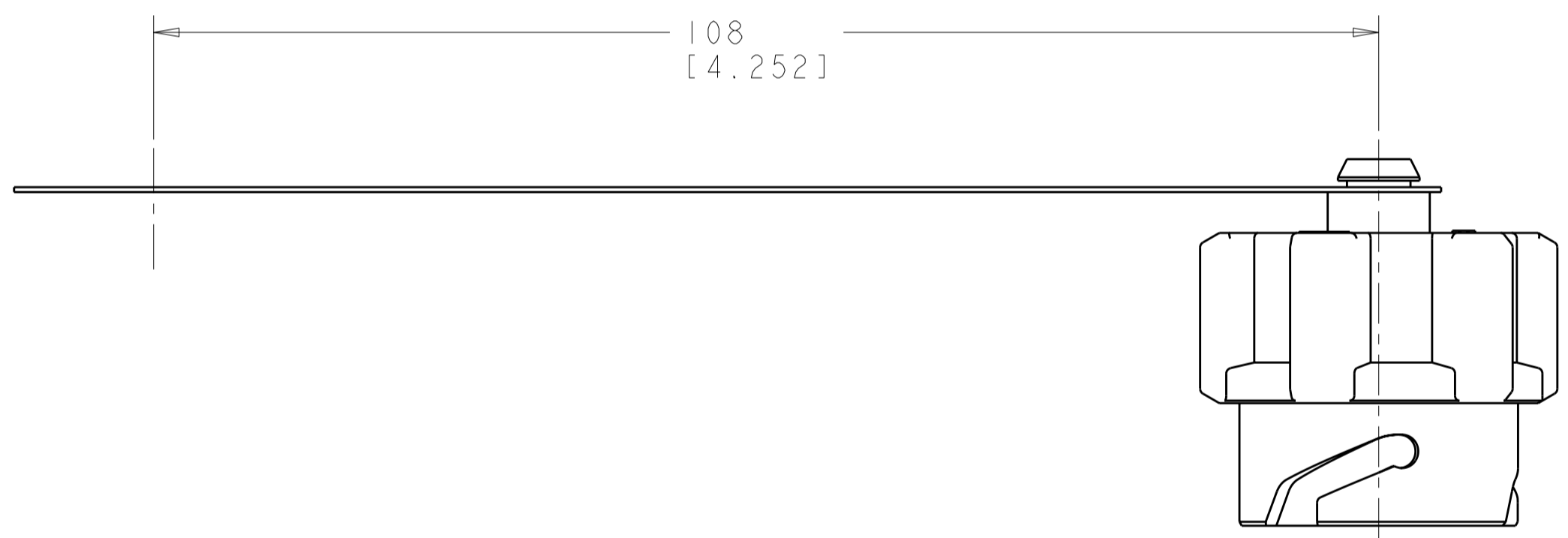
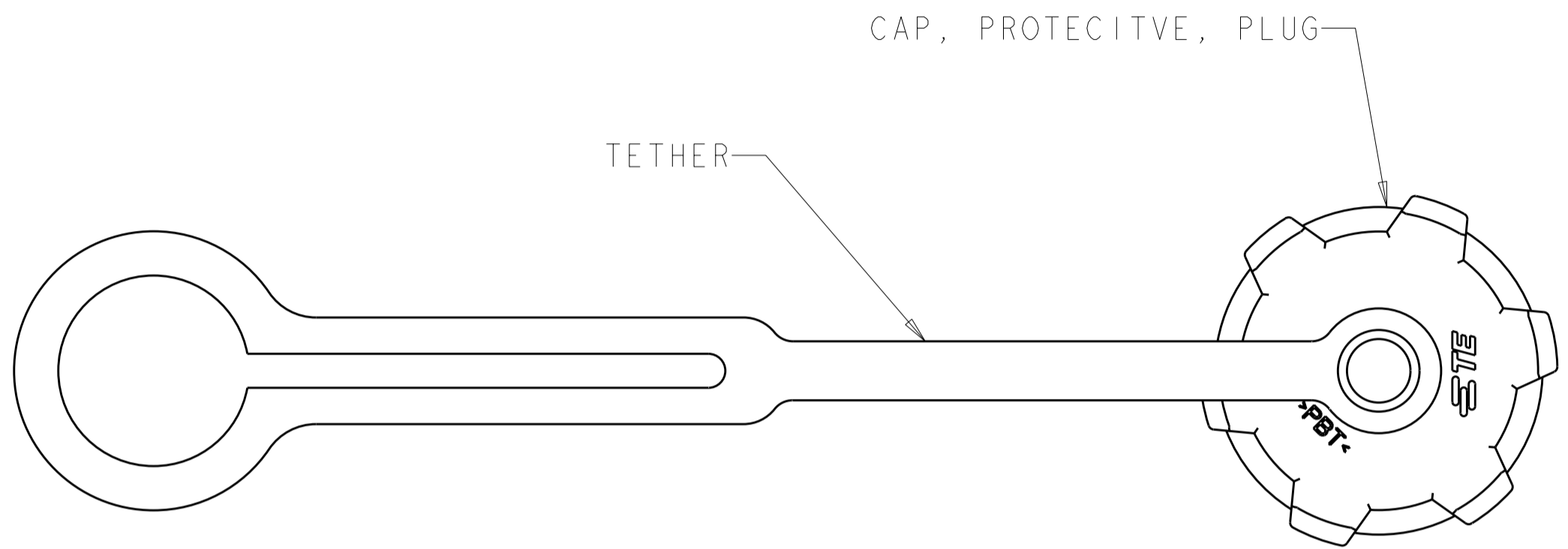
Address: A1208, Overseas Decoration Building, #122 Zhenhua RD., Futian, Shenzhen, China



THIS DRAWING IS UNPUBLISHED. RELEASED FOR PUBLICATION 20
 © COPYRIGHT 20 BY - ALL RIGHTS RESERVED.

LOC	DIST	REVISIONS					
CE	00	P	LTR	DESCRIPTION	DATE	DWN	APVD
		B		ECR-10-018751	19NOV2010	BB	SM

⚠ MATERIAL:
 CAP: PBT, COLOR: BLACK *
 TETHER: PC, COLOR: BLACK *
 * UL 94 V-0 RATED AT QUALIFIED THICKNESS.



1828740-1
 PART NO

THIS DRAWING IS A CONTROLLED DOCUMENT.		DWN D. ERDMAN 21 JUL 2005	STE TE Connectivity	
DIMENSIONS: mm		CHK M. GURRERI 21 JUL 2005		
TOLERANCES UNLESS OTHERWISE SPECIFIED:		APVD D. BAECHTLE 21 JUL 2005	NAME ASSEMBLY, PROTECTIVE CAP, PLUG, SEALED INDUSTRIAL LC	
0 PLC ±-		PRODUCT SPEC	RESTRICTED TO	
1 PLC ±-		APPLICATION SPEC	SIZE	CAGE CODE
2 PLC ±-			A200779	C-1828740
3 PLC ±-		WEIGHT	DRAWING NO	
4 PLC ±-			1828740	
ANGLES ±-			SCALE	SHEET
FINISH		CUSTOMER DRAWING	2:1	1 OF 1
				REV B