



Chipsmall Limited consists of a professional team with an average of over 10 year of expertise in the distribution of electronic components. Based in Hongkong, we have already established firm and mutual-benefit business relationships with customers from,Europe,America and south Asia,supplying obsolete and hard-to-find components to meet their specific needs.

With the principle of "Quality Parts,Customers Priority,Honest Operation,and Considerate Service",our business mainly focus on the distribution of electronic components. Line cards we deal with include Microchip,ALPS,ROHM,Xilinx,Pulse,ON,Everlight and Freescale. Main products comprise IC,Modules,Potentiometer,IC Socket,Relay,Connector.Our parts cover such applications as commercial,industrial, and automotives areas.

We are looking forward to setting up business relationship with you and hope to provide you with the best service and solution. Let us make a better world for our industry!



Contact us

Tel: +86-755-8981 8866 Fax: +86-755-8427 6832

Email & Skype: info@chipsmall.com Web: www.chipsmall.com

Address: A1208, Overseas Decoration Building, #122 Zhenhua RD., Futian, Shenzhen, China



**System pitch 5.08 mm (0.200 inch)
SL-SMT 5.08/04/180G 3.2SN BK BX**

Weidmüller Interface GmbH & Co. KG
Klingenbergstraße 16
D-32758 Detmold
Germany
Fon: +49 5231 14-0
Fax: +49 5231 14-2083
www.weidmueller.com



High-temperature-resistant male connector, packed in box or tape. In tape with 1.5 mm solder pin optimised for automatic assembly. 3.2 mm solder pin suitable for reflow and wave soldering. These male connectors can be labelled and coded.

- 400 V (IEC) / 300 V (UL)
- 19 A (IEC) / 15 A (UL)

General ordering data

Order No.	1838230000
Part designation	SL-SMT 5.08/04/180G 3.2SN BK BX
Version	PCB plug-in connector, male header, 5.08 mm, No. of poles: 4, 180°, Solder pin length: 3.2 mm, tinned, black, Reflow solder connection, Box
GTIN (EAN)	4032248348299
Qty.	100 pc(s).
Packaging	Box

System pitch 5.08 mm (0.200 inch) SL-SMT 5.08/04/180G 3.2SN BK BX

Weidmüller Interface GmbH & Co. KG
Klingenbergstraße 16
D-32758 Detmold
Germany
Fon: +49 5231 14-0
Fax: +49 5231 14-2083
www.weidmueller.com

Technical data

System parameters

Fitted to PCB	Reflow solder connection	Outgoing elbow	180°
Pitch in mm	5.08 mm	Pitch in inch	0.2 inch
No. of poles	4	Solder pin length	3.2 mm
Can be coded	Yes	No. of rows	1
Number of solder pins per pole	1	L1 in mm	15.24 mm
L1 in inch	0.6 inch		

Material data

Insulating material	LCP GF	Colour	black
Insulating material group	IIIa	Flammability class UL 94	V-0
Contact material	CuSn	Contact surface	tinned
Highest continuous operating temperature, min.	-25 °C	Highest continuous operating temperature, max.	100 °C
Max. relative humidity during storage	80 %		

DIN IEC rating data

Rated current, min. No. of poles (Tu=20°C)	19 A	Rated current, max. No. of poles (Tu=20°C)	15 A
Rated current, no. of poles (Tu=40°C), min.	16 A	Rated current, no. of poles (Tu=40°C), max.	13 A
Rated voltage at overvoltage category/pollution degree III/3	250 V	Rated impulse withstand voltage for overvoltage class/pollution severity III/3	4 kV
Rated voltage for overvoltage class/pollution severity III/2	320 V	Rated impulse withstand voltage for overvoltage class/pollution severity III/2	4 kV
Rated voltage for overvoltage class/pollution severity II/2	400 V	Rated impulse withstand voltage for overvoltage class/pollution severity II/2	4 kV

CSA rating data

Rated voltage (Use group B)	300 V	Rated current (use group B)	15 A
Rated voltage (use group D)	300 V	Rated current (use group D)	10 A

UL 1059 rating data

Rated voltage (use group B)	300 V	Rated current (use group B)	15 A
Rated voltage (use group D)	300 V	Rated current (use group D)	10 A

Approvals

Approvals institutes	CSA; GOSTME25; UR; ROHS
----------------------	-------------------------

Classifications

ETIM 3.0	EC001284	eClass 5.1	27-26-07-04
eClass 6.0	27-26-07-04		

Datasheet

System pitch 5.08 mm (0.200 inch)
SL-SMT 5.08/04/180G 3.2SN BK BX

Weidmüller Interface GmbH & Co. KG
Klingenbergstraße 16
D-32758 Detmold
Germany
Fon: +49 5231 14-0
Fax: +49 5231 14-2083
www.weidmueller.com

Technical data**Notes**

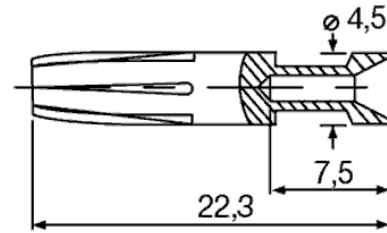
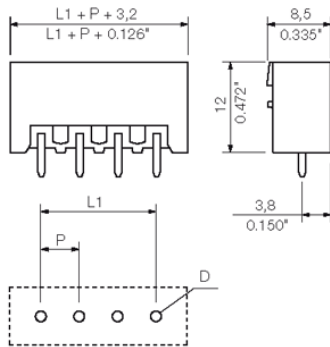
Notes

- Additional colours on request
- Gold-plated contact surfaces on request
- Rated current related to rated cross-section and min. No. of poles.
- Diameter of solder eyelet $D = 1.4 \pm 0.1$ mm
- Diameter of solder eyelet $D = 1.5 \pm 0.1$ mm from 9-pole
- P on drg. = pitch
- Rated data refer only to the component itself. Clearance and creepage distances to other components are to be designed in accordance with the relevant application standards.

Datasheet

System pitch 5.08 mm (0.200 inch)
SL-SMT 5.08/04/180G 3.2SN BK BX

Weidmüller Interface GmbH & Co. KG
Klingenbergstraße 16
D-32758 Detmold
Germany
Fon: +49 5231 14-0
Fax: +49 5231 14-2083
www.weidmueller.com

Drawings

System pitch 5.08 mm (0.200 inch) SL-SMT 5.08/04/180G 3.2SN BK BX

Weidmüller Interface GmbH & Co. KG
 Klingenbergstraße 16
 D-32758 Detmold
 Germany
 Fon: +49 5231 14-0
 Fax: +49 5231 14-2083
 www.weidmueller.com

Counterpart

BLZP 5.08/225 SN



Clamping-yoke wire connection with right-angled (90° or 270°) or angled (225°) outlet direction. The female connectors provide space for labelling and can be coded. Can be fastened with flange or release latch. They feature an integrated plus/minus screw, protection against false insertion under clamping yoke. They are delivered with an opened clamping yoke.

- 0.2-2.5 mm² (IEC) / 26-12 AWG (UL)
- 400 V (IEC) / 300 V (UL)
- 17.5 A (IEC) / 10 A (UL)

General ordering data

Order No.	Part designation	Version	GTIN (EAN)	Qty.	Packaging
1946270000	BLZP 5.08/04/225 SN OR BX	PCB plug-in connector, female plug, 5.08 mm, No. of poles: 4, 225°, Clamping yoke connection, Clamping range, max.: 4 mm ² , Box	4032248621842	90 pc(s).	Box
1946580000	BLZP 5.08/04/225 SN BK BX	PCB plug-in connector, female plug, 5.08 mm, No. of poles: 4, 225°, Clamping yoke connection, Clamping range, max.: 4 mm ² , Box	4032248622351	90 pc(s).	Box

BLZ 5.08F QV2



Female connectors with clamping yoke screw connection for conductor connection with straight outlet direction and internal cross-connection for connections 1-2 & 3-4. Bus current up to 32 A for 4 mm² (without wire end ferrules). The female connectors provide space for labelling and can be coded. Packed in cardboard box.

- 0.20 - 2.5 mm² (IEC) / 26 - 14 AWG (UL)
- 400 V (IEC) / 300 V (UL)
- 17.5 A (IEC) / 10 A (UL)

General ordering data

Order No.	Part designation	Version	GTIN (EAN)	Qty.	Packaging
1844500000	BLZ 5.08/04/180FQV2 SN BK BX	PCB plug-in connector, female plug, 5.08 mm, No. of poles: 4, 180°, Clamping yoke connection, Clamping range, max.: 4 mm ² , Box	4032248354948	100 pc(s).	Box
1846870000	BLZ 5.08/04/180FQV2 SN OR BX	PCB plug-in connector, female plug, 5.08 mm, No. of poles: 4, 180°, Clamping yoke connection, Clamping range, max.: 4 mm ² , Box	4032248362684	100 pc(s).	Box

System pitch 5.08 mm (0.200 inch) SL-SMT 5.08/04/180G 3.2SN BK BX

Weidmüller Interface GmbH & Co. KG
 Klingenbergstraße 16
 D-32758 Detmold
 Germany
 Fon: +49 5231 14-0
 Fax: +49 5231 14-2083
 www.weidmueller.com

Counterpart

BL 5.08



Female connectors for conductor connection in leaf spring system. Packed in cardboard box. The female connectors provide space for labelling. Packed in cardboard box.

- 0.2 - 1.5 mm² (IEC) / 26 - 14 AWG (UL)
- 400 V (IEC) / 300 V (UL)
- 11 A (IEC) / 10 A (UL)

General ordering data

Order No.	Part designation	Version	GTIN (EAN)	Qty.	Packaging
1716490000	BL 5.08/04/180 SN BK BX	PCB plug-in connector, female plug, 5.08 mm, No. of poles: 4, 180°, Leaf spring connection, Clamping range, max.: 2.08 mm ² , Box	4008190376536	100 pc(s).	Box
1723850000	BL 5.08/04/180 SN DKGX BX	PCB plug-in connector, female plug, 5.08 mm, No. of poles: 4, 180°, Leaf spring connection, Clamping range, max.: 2.08 mm ² , Box	4008190376215	100 pc(s).	Box
1716340000	BL 5.08/04/180 SN OR BX	PCB plug-in connector, female plug, 5.08 mm, No. of poles: 4, 180°, Leaf spring connection, Clamping range, max.: 2.08 mm ² , Box	4008190376376	100 pc(s).	Box

BLZP 5.08/180 SN



Female connectors with clamping yoke screw connection for conductor connection with straight (180°) outlet direction. The female connectors provide space for labelling and can be coded. Can be fastened with flange or release latch. They feature an integrated plus/minus screw, protection against false insertion under clamping yoke. They are delivered with an opened clamping yoke.

- 0.2-2.5 mm² (IEC) / 26-12 AWG (UL)
- 400 V (IEC) / 300 V (UL)
- 19 A (IEC) / 15 A (UL)

General ordering data

Order No.	Part designation	Version	GTIN (EAN)	Qty.	Packaging
1943600000	BLZP 5.08/04/180 SN OR BX	PCB plug-in connector, female plug, 5.08 mm, No. of poles: 4, 180°, Clamping yoke connection, Clamping range, max.: 4 mm ² , Box	4032248617593	100 pc(s).	Box
1943830000	BLZP 5.08/04/180 SN BK BX	PCB plug-in connector, female plug, 5.08 mm, No. of poles: 4, 180°, Clamping yoke connection, Clamping range, max.: 4 mm ² , Box	4032248617869	100 pc(s).	Box

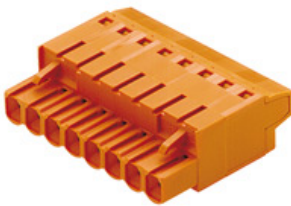
System pitch 5.08 mm (0.200 inch) SL-SMT 5.08/04/180G 3.2SN BK BX

Weidmüller Interface GmbH & Co. KG
 Klingenbergstraße 16
 D-32758 Detmold
 Germany
 Fon: +49 5231 14-0
 Fax: +49 5231 14-2083
 www.weidmueller.com

Counterpart

connection, Clamping range,
 max.: 4 mm², Box

BLT 5.08



Female connectors with TOP screw system for connecting conductors with straight 180° outlet direction. The female connectors include space for labelling and can be coded. Packed in cardboard box.

- 0.20 - 2.5 mm² (IEC) / 26 - 14 AWG (UL)
- 400 V (IEC) / 300 V (UL)
- 17 A (IEC) / 10 A (UL)

General ordering data

Order No.	Part designation	Version	GTIN (EAN)	Qty.	Packaging
1499760000	BLT 5.08/04/180 SN OR BX	PCB plug-in connector, female plug, 5.08 mm, No. of poles: 4, 180°, TOP connection, Clamping range, max.: 2.5 mm ² , Box	4008190037536	90 pc(s).	Box
1499710000	BLT 5.08/04/180 SN BK BX	PCB plug-in connector, female plug, 5.08 mm, No. of poles: 4, 180°, TOP connection, Clamping range, max.: 2.5 mm ² , Box	4008190861711	90 pc(s).	Box

BLF 5.08/90 SN



Just as reliable as the tried-and-true original, with innovation in detail:

The BLF 5.0x – the PUSH-IN version of the BLZ 5.0x socket block – features a new connection system and a more compact design. Weidmüller's innovative PUSH-IN spring connection features a trend-setting, tool-free wire connection system that is simple to operate.

In terms of versatility, the BLF 5.0x offers just as much as the older versions:

- The choice of three wire outlet directions offers you proven design flexibility for your applications.
- Four flange variations, including the patented release latch, allow for user-friendly unplugging designs.

General ordering data

Order No.	Part designation	Version	GTIN (EAN)	Qty.	Packaging
1001550000	BLF 5.08/04/90 SN OR BX	PCB plug-in connector, female plug, 5.08 mm, No. of poles: 4, 90°, PUSH IN, Clamping range, max.: 3.31 mm ² , Box	4032248693351	90 pc(s).	Box
1000050001	BLF 5.08/04/90 SN BK BX	PCB plug-in connector, female plug, 5.08 mm, No. of poles: 4,	4032248689989	90 pc(s).	Box

System pitch 5.08 mm (0.200 inch) SL-SMT 5.08/04/180G 3.2SN BK BX

Weidmüller Interface GmbH & Co. KG
 Klingenbergstraße 16
 D-32758 Detmold
 Germany
 Fon: +49 5231 14-0
 Fax: +49 5231 14-2083
 www.weidmueller.com

Counterpart

90°, PUSH IN, Clamping range,
 max.: 3.31 mm², Box

BLC 5.08R



Female connectors for conductor connection with crimp connection system. The female connectors provide space for labelling and can be coded. Packed in cardboard box.

- 0.25 - 2.5 mm² (IEC) / 26 - 14 AWG (UL)
- 400 V (IEC) / 300 V (UL)
- 21 A (IEC) / 10 A (UL)

General ordering data

Order No.	Part designation	Version	GTIN (EAN)	Qty.	Packaging
1610510000	BLC 5.08/04/180R OR BX	PCB plug-in connector, female plug, 5.08 mm, No. of poles: 4, 180°, Crimp connection, Clamping range, max.: 2.5 mm², Box	4008190065102	100 pc(s).	Box
1711980000	BLC 5.08/04/180R BK BX	PCB plug-in connector, female plug, 5.08 mm, No. of poles: 4, 180°, Crimp connection, Clamping range, max.: 2.5 mm², Box	4008190934996	100 pc(s).	Box

BLL 5.08/180



Female connector for PCB mounting. The solder pin length is optimised for wave flow soldering. Packed in cardboard box.

- 400 V (IEC) / 300 V (UL)
- 23 A (IEC) / 15 A (UL)

General ordering data

Order No.	Part designation	Version	GTIN (EAN)	Qty.	Packaging
1630730000	BLL 5.08/04/180 3.2SN OR BX	PCB plug-in connector, female header, 5.08 mm, No. of poles: 4, 180°, Solder pin length: 3.2 mm, tinned, Orange, Solder connection, Box	4008190204150	100 pc(s).	Box

**System pitch 5.08 mm (0.200 inch)
SL-SMT 5.08/04/180G 3.2SN BK BX**

Weidmüller Interface GmbH & Co. KG
Klingenbergstraße 16
D-32758 Detmold
Germany
Fon: +49 5231 14-0
Fax: +49 5231 14-2083
www.weidmueller.com

Counterpart

BLZF 5.08/180



Female connectors for connecting conductors with tension clamp system, straight 180° outlet direction. The female connectors include space for labelling and can be coded. Packed in cardboard box.

- 0.20 - 2.5 mm² (IEC) / 26 - 12 AWG (UL)
- 400 V (IEC) / 300 V (UL)
- 17 A (IEC) / 15 A (UL)

General ordering data

Order No.	Part designation	Version	GTIN (EAN)	Qty.	Packaging
1707480000	BLZF 5.08/04/180 SN OR BX	PCB plug-in connector, female plug, 5.08 mm, No. of poles: 4, 180°, Tension clamp connection, Clamping range, max.: 3.31 mm ² , Box	4008190395858	90 pc(s).	Box
1707710000	BLZF 5.08/04/180 SN BK BX	PCB plug-in connector, female plug, 5.08 mm, No. of poles: 4, 180°, Tension clamp connection, Clamping range, max.: 3.31 mm ² , Box	4008190316716	90 pc(s).	Box

BLIDC 5.08



Female connectors for conductor connection with IDC system. The female connectors provide space for labelling and can be coded. Packed in cardboard box.

- 0.35 - 0.75 mm² (IEC) / 22 - 20 AWG (UL)
- 400 V (IEC) / 300 V (UL)
- 11 A (IEC) / 5 A (UL)

General ordering data

Order No.	Part designation	Version	GTIN (EAN)	Qty.	Packaging
1724960000	BLIDC 5.08/04/180 SN OR BX	PCB plug-in connector, female plug, 5.08 mm, No. of poles: 4, 180°, IDC terminal, Clamping range, max.: 0.75 mm ² , Box	4008190377304	100 pc(s).	Box

**System pitch 5.08 mm (0.200 inch)
SL-SMT 5.08/04/180G 3.2SN BK BX**

Weidmüller Interface GmbH & Co. KG
Klingenbergstraße 16
D-32758 Detmold
Germany
Fon: +49 5231 14-0
Fax: +49 5231 14-2083
www.weidmueller.com

Counterpart
BLZ 5.08/180


Female connectors with clamping yoke screw connection for conductor connection with straight outlet direction. The female connectors provide space for labelling and can be coded. Packed in cardboard box.

- 0.20 - 2.5 mm² (IEC) / 26 - 12 AWG (UL)
- 400 V (IEC) / 300 V (UL)
- 19 A (IEC) / 15 A (UL)

General ordering data

Order No.	Part designation	Version	GTIN (EAN)	Qty.	Packaging
1526610000	BLZ 5.08/04/180 SN BK BX	PCB plug-in connector, female plug, 5.08 mm, No. of poles: 4, 180°, Clamping yoke connection, Clamping range, max.: 3.31 mm ² , Box	4008190049454	100 pc(s).	Box
1526660000	BLZ 5.08/04/180 SN OR BX	PCB plug-in connector, female plug, 5.08 mm, No. of poles: 4, 180°, Clamping yoke connection, Clamping range, max.: 3.31 mm ² , Box	4008190148232	100 pc(s).	Box

BLZF 5.08/90


Female connectors for connecting conductors with tension clamp system. The female connectors include space for labelling and can be coded. Packed in cardboard box.

- 0.20 - 2.5 mm² (IEC) / 26 - 12 AWG (UL)
- 400 V (IEC) / 300 V (UL)
- 16.5 A (IEC) / 10 A (UL)

General ordering data

Order No.	Part designation	Version	GTIN (EAN)	Qty.	Packaging
1671040000	BLZF 5.08/04/90 SN BK BX	PCB plug-in connector, female plug, 5.08 mm, No. of poles: 4, 90°, Tension clamp connection, Clamping range, max.: 3.31 mm ² , Box	4008190432713	90 pc(s).	Box
1670810000	BLZF 5.08/04/90 SN OR BX	PCB plug-in connector, female plug, 5.08 mm, No. of poles: 4, 90°, Tension clamp connection, Clamping range, max.: 3.31 mm ² , Box	4008190432416	90 pc(s).	Box

System pitch 5.08 mm (0.200 inch) SL-SMT 5.08/04/180G 3.2SN BK BX

Weidmüller Interface GmbH & Co. KG
Klingenbergstraße 16
D-32758 Detmold
Germany
Fon: +49 5231 14-0
Fax: +49 5231 14-2083
www.weidmueller.com

Counterpart

BLDT 5.08



Female connectors with two clamping yoke screw connections per pole for conductor connection with 90° & 270° outlet direction. The female connectors provide space for labelling and can be coded. Packed in cardboard box.

- 0.20 - 2.5 mm² (IEC) / 26 - 12 AWG (UL)
- 400 V (IEC) / 300 V (UL)
- 14 A (IEC) / 10 A (UL)

General ordering data

Order No.	Part designation	Version	GTIN (EAN)	Qty.	Packaging
1644750000	BLDT 5.08/04/- SN OR BX	PCB plug-in connector, female plug, 5.08 mm, No. of poles: 4, 90°/270°, Clamping yoke connection, Clamping range, max.: 3.31 mm ² , Box	4008190283964	50 pc(s).	Box
1660730000	BLDT 5.08/04/- SN BK BX	PCB plug-in connector, female plug, 5.08 mm, No. of poles: 4, 90°/270°, Clamping yoke connection, Clamping range, max.: 3.31 mm ² , Box	4008190417185	50 pc(s).	Box

BLZ 5.08/90



Female connectors with clamping yoke screw connection. The female connectors provide space for labelling and can be coded. Packed in cardboard box.

- 0.20 - 2.5 mm² (IEC) / 26 - 12 AWG (UL)
- 400 V (IEC) / 300 V (UL)
- 15 A (IEC) / 10 A (UL)

General ordering data

Order No.	Part designation	Version	GTIN (EAN)	Qty.	Packaging
1552910000	BLZ 5.08/04/90 SN BK BX	PCB plug-in connector, female plug, 5.08 mm, No. of poles: 4, 90°, Clamping yoke connection, Clamping range, max.: 3.31 mm ² , Box	4008190267728	90 pc(s).	Box
1552960000	BLZ 5.08/04/90 SN OR BX	PCB plug-in connector, female plug, 5.08 mm, No. of poles: 4, 90°, Clamping yoke connection, Clamping range, max.: 3.31 mm ² , Box	4008190123932	90 pc(s).	Box

System pitch 5.08 mm (0.200 inch) SL-SMT 5.08/04/180G 3.2SN BK BX

Weidmüller Interface GmbH & Co. KG
 Klingenbergstraße 16
 D-32758 Detmold
 Germany
 Fon: +49 5231 14-0
 Fax: +49 5231 14-2083
 www.weidmueller.com

Counterpart

BLL 5.08/90



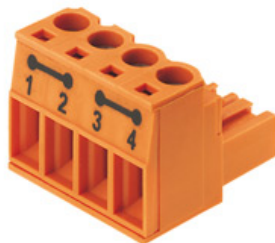
Female connector for PCB mounting. The solder pin length is optimised for wave flow soldering. Packed in cardboard box.

- 400 V (IEC) / 300 V (UL)
- 23 A (IEC) / 15 A (UL)

General ordering data

Order No.	Part designation	Version	GTIN (EAN)	Qty.	Packaging
1622960000	BLL 5.08/04/90 3.2SN OR BX	PCB plug-in connector, female header, 5.08 mm, No. of poles: 4, 90°, Solder pin length: 3.2 mm, tinned, Orange, Solder connection, Box	4008190194024	100 pc(s).	Box

BLZ 5.08 QV2



Female connectors with clamping yoke screw connection for conductor connection with straight outlet direction and internal cross-connection for connections 1-2 & 3-4. Bus current up to 32 A for 4 mm² (without wire end ferrules). The female connectors provide space for labelling and can be coded.

- 0.20 - 2.5 mm² (IEC) / 26 - 14 AWG (UL)
- 400 V (IEC) / 300 V (UL)
- 17.5 A (IEC) / 10 A (UL)

General ordering data

Order No.	Part designation	Version	GTIN (EAN)	Qty.	Packaging
1839770000	BLZ 5.08/04/180QV2 SN OR BX	PCB plug-in connector, female plug, 5.08 mm, No. of poles: 4, 180°, Clamping yoke connection, Clamping range, max.: 4 mm ² , Box	4032248350292	100 pc(s).	Box
1839780000	BLZ 5.08/04/180QV2 SN BK BX	PCB plug-in connector, female plug, 5.08 mm, No. of poles: 4, 180°, Clamping yoke connection, Clamping range, max.: 4 mm ² , Box	4032248350308	100 pc(s).	Box

System pitch 5.08 mm (0.200 inch) SL-SMT 5.08/04/180G 3.2SN BK BX

Weidmüller Interface GmbH & Co. KG
Klingenbergstraße 16
D-32758 Detmold
Germany
Fon: +49 5231 14-0
Fax: +49 5231 14-2083
www.weidmueller.com

Counterpart

BLZ 5.08/225



Female connectors with clamping yoke screw connection for conductor connection with 225° outlet direction. The female connectors provide space for labelling and can be coded. Packed in cardboard box.

- 0.20 - 2.5 mm² (IEC) / 26 - 12 AWG (UL)
- 400 V (IEC) / 300 V (UL)
- 16.5 A (IEC) / 10 A (UL)

General ordering data

Order No.	Part designation	Version	GTIN (EAN)	Qty.	Packaging
1741890000	BLZ 5.08/04/225 SN BK BX	PCB plug-in connector, female plug, 5.08 mm, No. of poles: 4, 225°, Clamping yoke connection, Clamping range, max.: 3.31 mm ² , Box	4008190254155	90 pc(s).	Box
1741660000	BLZ 5.08/04/225 SN OR BX	PCB plug-in connector, female plug, 5.08 mm, No. of poles: 4, 225°, Clamping yoke connection, Clamping range, max.: 3.31 mm ² , Box	4008190202637	90 pc(s).	Box

BLZ 5.08/270



Female connectors with clamping yoke screw connection. The female connectors provide space for labelling and can be coded. Packed in cardboard box.

- 0.20 - 2.5 mm² (IEC) / 26 - 12 AWG (UL)
- 400 V (IEC) / 300 V (UL)
- 15 A (IEC) / 10 A (UL)

General ordering data

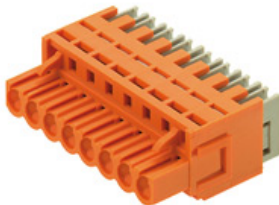
Order No.	Part designation	Version	GTIN (EAN)	Qty.	Packaging
1557510000	BLZ 5.08/04/270 SN BK BX	PCB plug-in connector, female plug, 5.08 mm, No. of poles: 4, 270°, Clamping yoke connection, Clamping range, max.: 3.31 mm ² , Box	4008190269449	90 pc(s).	Box
1557560000	BLZ 5.08/04/270 SN OR BX	PCB plug-in connector, female plug, 5.08 mm, No. of poles: 4, 270°, Clamping yoke connection, Clamping range, max.: 3.31 mm ² , Box	4008190104788	90 pc(s).	Box

System pitch 5.08 mm (0.200 inch) SL-SMT 5.08/04/180G 3.2SN BK BX

Weidmüller Interface GmbH & Co. KG
 Klingenbergstraße 16
 D-32758 Detmold
 Germany
 Fon: +49 5231 14-0
 Fax: +49 5231 14-2083
 www.weidmueller.com

Counterpart

BLIDC 5.08B



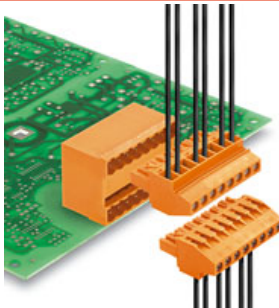
Female connectors for conductor connection with IDC system. The female connectors provide space for labelling and can be coded. Packed in cardboard box.

- 0.35 - 0.75 mm² (IEC) / 22 - 20 AWG (UL)
- 400 V (IEC) / 300 V (UL)
- 11 A (IEC) / 5 A (UL)

General ordering data

Order No.	Part designation	Version	GTIN (EAN)	Qty.	Packaging
1759630000	BLIDC 5.08/04/180B SN BK BX	PCB plug-in connector, female plug, 5.08 mm, No. of poles: 4, 180°, IDC terminal, Clamping range, max.: 0.75 mm ² , Box	4032248069866	100 pc(s).	Box

BLZP 5.08/270 SN



Socket connectors with clamping yoke screw connection for conductor connection with a right-angle (90° or 270°) outlet direction. The female connectors provide space for labelling and can be coded. Can be fastened with flange or release latch. They feature an integrated plus/minus screw, protection against false insertion under clamping yoke. They are delivered with an opened clamping yoke.

- 0.2-2.5 mm² (IEC) / 26-12 AWG (UL)
- 400 V (IEC) / 300 V (UL)
- 15 A (IEC) / 10 A (UL)

General ordering data

Order No.	Part designation	Version	GTIN (EAN)	Qty.	Packaging
1949040000	BLZP 5.08/04/270 SN BK BX	PCB plug-in connector, female plug, 5.08 mm, No. of poles: 4, 270°, Clamping yoke connection, Clamping range, max.: 4 mm ² , Box	4032248626496	90 pc(s).	Box
1948810000	BLZP 5.08/04/270 SN OR BX	PCB plug-in connector, female plug, 5.08 mm, No. of poles: 4, 270°, Clamping yoke connection, Clamping range, max.: 4 mm ² , Box	4032248626267	90 pc(s).	Box

Datasheet

System pitch 5.08 mm (0.200 inch)
SL-SMT 5.08/04/180G 3.2SN BK BX

Weidmüller Interface GmbH & Co. KG
 Klingenbergstraße 16
 D-32758 Detmold
 Germany
 Fon: +49 5231 14-0
 Fax: +49 5231 14-2083
 www.weidmueller.com

Counterpart

BLZF 5.08/270



Female connectors for connecting conductors with tension clamp system. The female connectors include space for labelling and can be coded. Packed in cardboard box.

- 0.20 - 2.5 mm² (IEC) / 26 - 12 AWG (UL)
- 400 V (IEC) / 300 V (UL)
- 16.5 A (IEC) / 10 A (UL)

General ordering data

Order No.	Part designation	Version	GTIN (EAN)	Qty.	Packaging
1671960000	BLZF 5.08/04/270 SN OR BX	PCB plug-in connector, female plug, 5.08 mm, No. of poles: 4, 270°, Tension clamp connection, Clamping range, max.: 3.31 mm ² , Box	4008190433673	90 pc(s).	Box
1672190000	BLZF 5.08/04/270 SN BK BX	PCB plug-in connector, female plug, 5.08 mm, No. of poles: 4, 270°, Tension clamp connection, Clamping range, max.: 3.31 mm ² , Box	4008190433901	90 pc(s).	Box

System pitch 5.08 mm (0.200 inch) SL-SMT 5.08/04/180G 3.2SN BK BX

Weidmüller Interface GmbH & Co. KG
 Klingenbergstraße 16
 D-32758 Detmold
 Germany
 Fon: +49 5231 14-0
 Fax: +49 5231 14-2083
 www.weidmueller.com

Counterpart

BLZP 5.08/270F SN



Socket connectors with clamping yoke screw connection for conductor connection with a right-angle (90° or 270°) outlet direction. The female connectors provide space for labelling and can be coded. Can be fastened with flange or release latch. They feature an integrated plus/minus screw, protection against false insertion under clamping yoke. They are delivered with an opened clamping yoke.

- 0.2-2.5 mm² (IEC) / 26-12 AWG (UL)
- 400 V (IEC) / 300 V (UL)
- 15 A (IEC) / 10 A (UL)

General ordering data

Order No.	Part designation	Version	GTIN (EAN)	Qty.	Packaging
1950570000	BLZP 5.08/04/270F SN BK BX	PCB plug-in connector, female plug, 5.08 mm, No. of poles: 4, 270°, Clamping yoke connection, Clamping range, max.: 4 mm ² , Box	4032248628704	60 pc(s).	Box
1950330000	BLZP 5.08/04/270F SN OR BX	PCB plug-in connector, female plug, 5.08 mm, No. of poles: 4, 270°, Clamping yoke connection, Clamping range, max.: 4 mm ² , Box	4032248628445	60 pc(s).	Box

BLZP 5.08/180F SN



Female connectors with clamping yoke screw connection for conductor connection with straight (180°) outlet direction. The female connectors provide space for labelling and can be coded. Can be fastened with flange or release latch. They feature an integrated plus/minus screw, protection against false insertion under clamping yoke. They are delivered with an opened clamping yoke.

- 0.2-2.5 mm² (IEC) / 26-12 AWG (UL)
- 400 V (IEC) / 300 V (UL)
- 19 A (IEC) / 15 A (UL)

General ordering data

Order No.	Part designation	Version	GTIN (EAN)	Qty.	Packaging
1944350000	BLZP 5.08/04/180F SN BK BX	PCB plug-in connector, female plug, 5.08 mm, No. of poles: 4, 180°, Clamping yoke connection, Clamping range, max.: 4 mm ² , Box	4032248618927	100 pc(s).	Box
1944110000	BLZP 5.08/04/180F SN OR BX	PCB plug-in connector, female plug, 5.08 mm, No. of poles: 4, 180°, Clamping yoke connection, Clamping range, max.: 4 mm ² , Box	4032248617494	100 pc(s).	Box

**System pitch 5.08 mm (0.200 inch)
SL-SMT 5.08/04/180G 3.2SN BK BX**

Weidmüller Interface GmbH & Co. KG
Klingenbergstraße 16
D-32758 Detmold
Germany
Fon: +49 5231 14-0
Fax: +49 5231 14-2083
www.weidmueller.com

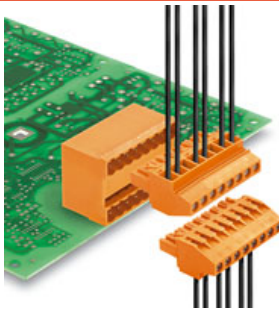
Counterpart
BLZ 5.08/180LH


Socket connectors with clamping yoke screw connection for conductor connection with 270° outlet direction and release lever or release latch mechanism. The female connectors provide space for labelling and can be coded. Packed in cardboard box.br/>

- 0.20–1.5 mm² (IEC) / 26–12 AWG (UL)
- 400 V (IEC) / 300 V (UL)
- 19 A (IEC) / 15 A (UL)

General ordering data

Order No.	Part designation	Version	GTIN (EAN)	Qty.	Packaging
1893620000	BLZ 5.08/04/180LH SN BK BX	PCB plug-in connector, female plug, 5.08 mm, No. of poles: 4, 180°, Clamping yoke connection, Clamping range, max.: 3.31 mm ² , Box	4032248507801	100 pc(s).	Box
1892210000	BLZ 5.08/04/180LH SN OR BX	PCB plug-in connector, female plug, 5.08 mm, No. of poles: 4, 180°, Clamping yoke connection, Clamping range, max.: 3.31 mm ² , Box	4032248505531	100 pc(s).	Box

BLZP 5.08/90F SN


Socket connectors with clamping yoke screw connection for conductor connection with a right-angle (90° or 270°) outlet direction. The female connectors provide space for labelling and can be coded. Can be fastened with flange or release latch. They feature an integrated plus/minus screw, protection against false insertion under clamping yoke. They are delivered with an opened clamping yoke.

- 0.2-2.5 mm² (IEC) / 26-12 AWG (UL)
- 400 V (IEC) / 300 V (UL)
- 15 A (IEC) / 10 A (UL)

General ordering data

Order No.	Part designation	Version	GTIN (EAN)	Qty.	Packaging
1950060000	BLZP 5.08/04/90F SN BK BX	PCB plug-in connector, female plug, 5.08 mm, No. of poles: 4, 90°, Clamping yoke connection, Clamping range, max.: 4 mm ² , Box	4032248627998	60 pc(s).	Box
1949820000	BLZP 5.08/04/90F SN OR BX	PCB plug-in connector, female plug, 5.08 mm, No. of poles: 4, 90°, Clamping yoke connection, Clamping range, max.: 4 mm ² , Box	4032248627745	60 pc(s).	Box

System pitch 5.08 mm (0.200 inch) SL-SMT 5.08/04/180G 3.2SN BK BX

Weidmüller Interface GmbH & Co. KG
 Klingenbergstraße 16
 D-32758 Detmold
 Germany
 Fon: +49 5231 14-0
 Fax: +49 5231 14-2083
 www.weidmueller.com

Counterpart

BLZ 5.08/180F



Female connectors with clamping yoke screw connection for conductor connection with straight outlet direction. The female connectors provide space for labelling and can be coded. Packed in cardboard box.

- 0.20 - 2.5 mm² (IEC) / 26 - 12 AWG (UL)
- 400 V (IEC) / 300 V (UL)
- 19 A (IEC) / 15 A (UL)

General ordering data

Order No.	Part designation	Version	GTIN (EAN)	Qty.	Packaging
1803060000	BLZ 5.08/04/180F SN BK BX	PCB plug-in connector, female plug, 5.08 mm, No. of poles: 4, 180°, Clamping yoke connection, Clamping range, max.: 3.31 mm ² , Box	4032248258161	100 pc(s).	Box
1802850000	BLZ 5.08/04/180F SN OR BX	PCB plug-in connector, female plug, 5.08 mm, No. of poles: 4, 180°, Clamping yoke connection, Clamping range, max.: 3.31 mm ² , Box	4032248257928	100 pc(s).	Box

BLT 5.08F



Female connectors with TOP screw system for connecting conductors with straight 180° outlet direction. The female connectors include space for labelling and can be coded. Packed in cardboard box.

- 0.20 - 2.5 mm² (IEC) / 26 - 14 AWG (UL)
- 400 V (IEC) / 300 V (UL)
- 17 A (IEC) / 10 A (UL)

General ordering data

Order No.	Part designation	Version	GTIN (EAN)	Qty.	Packaging
1844240000	BLT 5.08/04/180F SN BK BX	PCB plug-in connector, female plug, 5.08 mm, No. of poles: 4, 180°, TOP connection, Clamping range, max.: 2.5 mm ² , Box	4032248356171	60 pc(s).	Box
1844010000	BLT 5.08/04/180F SN OR BX	PCB plug-in connector, female plug, 5.08 mm, No. of poles: 4, 180°, TOP connection, Clamping range, max.: 2.5 mm ² , Box	4032248355938	60 pc(s).	Box

System pitch 5.08 mm (0.200 inch)
SL-SMT 5.08/04/180G 3.2SN BK BX

Weidmüller Interface GmbH & Co. KG
 Klingenbergstraße 16
 D-32758 Detmold
 Germany
 Fon: +49 5231 14-0
 Fax: +49 5231 14-2083
 www.weidmueller.com

Counterpart

BLL 5.08/90FI



Female connector for PCB mounting. The solder pin length is optimised for wave flow soldering. Packed in cardboard box.

- 400 V (IEC) / 300 V (UL)
- 23 A (IEC) / 15 A (UL)

General ordering data

Order No.	Part designation	Version	GTIN (EAN)	Qty.	Packaging
1843770000	BLL 5.08/04/90FI 3.2SN OR BX	PCB plug-in connector, female header, 5.08 mm, No. of poles: 4, 90°, Solder pin length: 3.2 mm, tinned, Orange, Solder connection, Box	4032248355525	100 pc(s).	Box

BLF 5.08/90LH SN



Just as reliable as the tried-and-true original, with innovation in detail:

The BLF 5.0x – the PUSH-IN version of the BLZ 5.0x socket block – features a new connection system and a more compact design. Weidmüller's innovative PUSH-IN spring connection features a trend-setting, tool-free wire connection system that is simple to operate.

In terms of versatility, the BLF 5.0x offers just as much as the older versions:

- The choice of three wire outlet directions offers you proven design flexibility for your applications.
- Four flange variations, including the patented release latch, allow for user-friendly unplugging designs.

General ordering data

Order No.	Part designation	Version	GTIN (EAN)	Qty.	Packaging
1000660001	BLF 5.08/04/90LH SN BK BX	PCB plug-in connector, female plug, 5.08 mm, No. of poles: 4, 90°, PUSH IN, Clamping range, max.: 3.31 mm², Box	4032248690855	60 pc(s).	Box
1002500000	BLF 5.08/04/90LH SN OR BX	PCB plug-in connector, female plug, 5.08 mm, No. of poles: 4, 90°, PUSH IN, Clamping range, max.: 3.31 mm², Box	4032248694877	60 pc(s).	Box

**System pitch 5.08 mm (0.200 inch)
SL-SMT 5.08/04/180G 3.2SN BK BX**

Weidmüller Interface GmbH & Co. KG
Klingenbergstraße 16
D-32758 Detmold
Germany
Fon: +49 5231 14-0
Fax: +49 5231 14-2083
www.weidmueller.com

Counterpart
BLDT 5.08B


Female connectors with two clamping yoke screw connections per pole for conductor connection with 90° & 270° outlet direction. The female connectors provide space for labelling and can be coded. Packed in cardboard box.

- 0.20 - 2.5 mm² (IEC) / 26 - 12 AWG (UL)
- 400 V (IEC) / 300 V (UL)
- 14 A (IEC) / 10 A (UL)

General ordering data

Order No.	Part designation	Version	GTIN (EAN)	Qty.	Packaging
1651760000	BLDT 5.08/04-B SN OR BX	PCB plug-in connector, female plug, 5.08 mm, No. of poles: 4, 90°/270°, Clamping yoke connection, Clamping range, max.: 3.31 mm ² , Box	4008190400446	50 pc(s).	Box
1673800000	BLDT 5.08/04-B SN BK BX	PCB plug-in connector, female plug, 5.08 mm, No. of poles: 4, 90°/270°, Clamping yoke connection, Clamping range, max.: 3.31 mm ² , Box	4008190435530	50 pc(s).	Box

BLZP 5.08/180LH SN


Female connectors with clamping yoke screw connection for conductor connection with straight (180°) outlet direction. The female connectors provide space for labelling and can be coded. Can be fastened with flange or release latch. They feature an integrated plus/minus screw, protection against false insertion under clamping yoke. They are delivered with an opened clamping yoke.

- 0.2-2.5 mm² (IEC) / 26-12 AWG (UL)
- 400 V (IEC) / 300 V (UL)
- 19 A (IEC) / 15 A (UL)

General ordering data

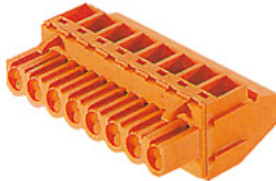
Order No.	Part designation	Version	GTIN (EAN)	Qty.	Packaging
1945540000	BLZP 5.08/04/180LH SN BK BX	PCB plug-in connector, female plug, 5.08 mm, No. of poles: 4, 180°, Clamping yoke connection, Clamping range, max.: 4 mm ² , Box	4032248620715	100 pc(s).	Box
1945310000	BLZP 5.08/04/180LH SN OR BX	PCB plug-in connector, female plug, 5.08 mm, No. of poles: 4, 180°, Clamping yoke connection, Clamping range, max.: 4 mm ² , Box	4032248619887	100 pc(s).	Box

System pitch 5.08 mm (0.200 inch) SL-SMT 5.08/04/180G 3.2SN BK BX

Weidmüller Interface GmbH & Co. KG
 Klingenbergstraße 16
 D-32758 Detmold
 Germany
 Fon: +49 5231 14-0
 Fax: +49 5231 14-2083
 www.weidmueller.com

Counterpart

BLZ 5.08/90B



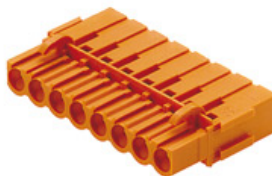
Female connectors with clamping yoke screw connection. The female connectors provide space for labelling and can be coded. Packed in cardboard box.

- 0.20 - 2.5 mm² (IEC) / 26 - 12 AWG (UL)
- 400 V (IEC) / 300 V (UL)
- 15 A (IEC) / 10 A (UL)

General ordering data

Order No.	Part designation	Version	GTIN (EAN)	Qty.	Packaging
1555260000	BLZ 5.08/04/90B SN OR BX	PCB plug-in connector, female plug, 5.08 mm, No. of poles: 4, 90°, Clamping yoke connection, Clamping range, max.: 3.31 mm ² , Box	4008190169589	78 pc(s).	Box
1555210000	BLZ 5.08/04/90B SN BK BX	PCB plug-in connector, female plug, 5.08 mm, No. of poles: 4, 90°, Clamping yoke connection, Clamping range, max.: 3.31 mm ² , Box	4008190267964	78 pc(s).	Box

BLC 5.08BR



Female connectors for conductor connection with crimp connection system. The female connectors provide space for labelling and can be coded. Packed in cardboard box.

- 0.25 - 2.5 mm² (IEC) / 26 - 14 AWG (UL)
- 400 V (IEC) / 300 V (UL)
- 21 A (IEC) / 10 A (UL)

General ordering data

Order No.	Part designation	Version	GTIN (EAN)	Qty.	Packaging
1649390000	BLC 5.08/04/180BR OR BX	PCB plug-in connector, female plug, 5.08 mm, No. of poles: 4, 180°, Crimp connection, Clamping range, max.: 2.5 mm ² , Box	4008190294502	100 pc(s).	Box
1712130000	BLC 5.08/04/180BR BK BX	PCB plug-in connector, female plug, 5.08 mm, No. of poles: 4, 180°, Crimp connection, Clamping range, max.: 2.5 mm ² , Box	4008190935146	100 pc(s).	Box

System pitch 5.08 mm (0.200 inch) SL-SMT 5.08/04/180G 3.2SN BK BX

Weidmüller Interface GmbH & Co. KG
 Klingenbergstraße 16
 D-32758 Detmold
 Germany
 Fon: +49 5231 14-0
 Fax: +49 5231 14-2083
 www.weidmueller.com

Counterpart

BLF 5.08/90LR SN



Just as reliable as the tried-and-true original, with innovation in detail:

The BLF 5.0x – the PUSH-IN version of the BLZ 5.0x socket block – features a new connection system and a more compact design. Weidmüller's innovative PUSH-IN spring connection features a trend-setting, tool-free wire connection system that is simple to operate.

In terms of versatility, the BLF 5.0x offers just as much as the older versions:

- The choice of three wire outlet directions offers you proven design flexibility for your applications.
- Four flange variations, including the patented release latch, allow for user-friendly unplugging designs.

General ordering data

Order No.	Part designation	Version	GTIN (EAN)	Qty.	Packaging
1000430001	BLF 5.08/04/90LR SN BK BX	PCB plug-in connector, female plug, 5.08 mm, No. of poles: 4, 90°, PUSH IN, Clamping range, max.: 3.31 mm², Box	4032248690398	60 pc(s).	Box
1002300000	BLF 5.08/04/90LR SN OR BX	PCB plug-in connector, female plug, 5.08 mm, No. of poles: 4, 90°, PUSH IN, Clamping range, max.: 3.31 mm², Box	4032248694464	60 pc(s).	Box

BLL 5.08/180B



Female connector for PCB mounting. The solder pin length is optimised for wave flow soldering. Packed in cardboard box.

- 400 V (IEC) / 300 V (UL)
- 23 A (IEC) / 15 A (UL)

General ordering data

Order No.	Part designation	Version	GTIN (EAN)	Qty.	Packaging
1682750000	BLL 5.08/04/180B 3.2SN OR BX	PCB plug-in connector, female header, 5.08 mm, No. of poles: 4, 180°, Solder pin length: 3.2 mm, tinned, Orange, Solder connection, Box	4008190474515	100 pc(s).	Box

System pitch 5.08 mm (0.200 inch) SL-SMT 5.08/04/180G 3.2SN BK BX

Weidmüller Interface GmbH & Co. KG
 Klingenbergstraße 16
 D-32758 Detmold
 Germany
 Fon: +49 5231 14-0
 Fax: +49 5231 14-2083
 www.weidmueller.com

Counterpart

BLZP 5.08/270LR SN



Socket connectors with clamping yoke screw connection for conductor connection with a right-angle (90° or 270°) outlet direction. The female connectors provide space for labelling and can be coded. Can be fastened with flange or release latch. They feature an integrated plus/minus screw, protection against false insertion under clamping yoke. They are delivered with an opened clamping yoke.

- 0.2-2.5 mm² (IEC) / 26-12 AWG (UL)
- 400 V (IEC) / 300 V (UL)
- 15 A (IEC) / 10 A (UL)

General ordering data

Order No.	Part designation	Version	GTIN (EAN)	Qty.	Packaging
1947550000	BLZP 5.08/04/270LR SN OR BX	PCB plug-in connector, female plug, 5.08 mm, No. of poles: 4, 270°, Clamping yoke connection, Clamping range, max.: 4 mm ² , Box	4032248623846	60 pc(s).	Box
1947780000	BLZP 5.08/04/270LR SN BK BX	PCB plug-in connector, female plug, 5.08 mm, No. of poles: 4, 270°, Clamping yoke connection, Clamping range, max.: 4 mm ² , Box	4032248624171	60 pc(s).	Box

BLZF 5.08/180F



Female connectors for connecting conductors with tension clamp system, straight 180° outlet direction. The female connectors include space for labelling and can be coded. Packed in cardboard box.

- 0.20 - 2.5 mm² (IEC) / 26 - 12 AWG (UL)
- 400 V (IEC) / 300 V (UL)
- 17 A (IEC) / 15 A (UL)

General ordering data

Order No.	Part designation	Version	GTIN (EAN)	Qty.	Packaging
1803580000	BLZF 5.08/04/180F SN BK BX	PCB plug-in connector, female plug, 5.08 mm, No. of poles: 4, 180°, Tension clamp connection, Clamping range, max.: 3.31 mm ² , Box	4032248258987	60 pc(s).	Box
1803350000	BLZF 5.08/04/180F SN OR BX	PCB plug-in connector, female plug, 5.08 mm, No. of poles: 4, 180°, Tension clamp connection, Clamping range, max.: 3.31 mm ² , Box	4032248258758	60 pc(s).	Box

System pitch 5.08 mm (0.200 inch) SL-SMT 5.08/04/180G 3.2SN BK BX

Weidmüller Interface GmbH & Co. KG
Klingenbergstraße 16
D-32758 Detmold
Germany
Fon: +49 5231 14-0
Fax: +49 5231 14-2083
www.weidmueller.com

Counterpart

BLZF 5.08/180LH



Socket blocks for conductor connection, featuring the time-saving tension clamp technology, with straight outlet direction and release lever or release latch mechanism. The female connectors provide space for labelling and can be coded. Packed in cardboard box.

- 0.20 - 1.5 mm² (IEC) / 26 - 12 AWG (UL)
- 400 V (IEC) / 300 V (UL)
- 17 A (IEC) / 15 A (UL)

General ordering data

Order No.	Part designation	Version	GTIN (EAN)	Qty.	Packaging
1893180000	BLZF 5.08/04/180LH SN BK BX	PCB plug-in connector, female plug, 5.08 mm, No. of poles: 4, 180°, Tension clamp connection, Clamping range, max.: 3.31 mm ² , Box	4032248507320	60 pc(s).	Box
1895740000	BLZF 5.08/04/180LH SN OR BX	PCB plug-in connector, female plug, 5.08 mm, No. of poles: 4, 180°, Tension clamp connection, Clamping range, max.: 3.31 mm ² , Box	4032248510467	60 pc(s).	Box

BLT 5.08LR



Socket connectors with clamping yoke screw connection for conductor connection with 270° outlet direction and release lever or release latch mechanism. The female connectors provide space for labelling and can be coded. Packed in cardboard box.

- 0.20 - 1.5 mm² (IEC) / 26 - 14 AWG (UL)
- 400 V (IEC) / 300 V (UL)
- 17 A (IEC) / 10 A (UL)

General ordering data

Order No.	Part designation	Version	GTIN (EAN)	Qty.	Packaging
1894150000	BLT 5.08/04/180LR SN BK BX	PCB plug-in connector, female plug, 5.08 mm, No. of poles: 4, 180°, TOP connection, Clamping range, max.: 2.5 mm ² , Box	4032248508396	60 pc(s).	Box
1890240000	BLT 5.08/04/180LR SN OR BX	PCB plug-in connector, female plug, 5.08 mm, No. of poles: 4, 180°, TOP connection, Clamping range, max.: 2.5 mm ² , Box	4032248498727	60 pc(s).	Box

System pitch 5.08 mm (0.200 inch) SL-SMT 5.08/04/180G 3.2SN BK BX

Weidmüller Interface GmbH & Co. KG
 Klingenbergstraße 16
 D-32758 Detmold
 Germany
 Fon: +49 5231 14-0
 Fax: +49 5231 14-2083
 www.weidmueller.com

Counterpart

BLZ 5.08/180LR



Socket connectors with clamping yoke screw connection for conductor connection with 270° outlet direction and release lever or release latch mechanism. The female connectors provide space for labelling and can be coded. Packed in cardboard box.

- 0.20 - 1.5 mm² (IEC) / 26 - 12 AWG (UL)
- 400 V (IEC) / 300 V (UL)
- 19 A (IEC) / 15 A (UL)

General ordering data

Order No.	Part designation	Version	GTIN (EAN)	Qty.	Packaging
1851220000	BLZ 5.08/04/180LR SN OR BX	PCB plug-in connector, female plug, 5.08 mm, No. of poles: 4, 180°, Clamping yoke connection, Clamping range, max.: 3.31 mm ² , Box	4032248381296	100 pc(s).	Box
1892970000	BLZ 5.08/04/180LR SN BK BX	PCB plug-in connector, female plug, 5.08 mm, No. of poles: 4, 180°, Clamping yoke connection, Clamping range, max.: 3.31 mm ² , Box	4032248507115	100 pc(s).	Box

BLZF 5.08/90B



Female connectors for connecting conductors with tension clamp system. The female connectors include space for labelling and can be coded. Packed in cardboard box.

- 0.20 - 2.5 mm² (IEC) / 26 - 12 AWG (UL)
- 400 V (IEC) / 300 V (UL)
- 16.5 A (IEC) / 10 A (UL)

General ordering data

Order No.	Part designation	Version	GTIN (EAN)	Qty.	Packaging
1671500000	BLZF 5.08/04/90B SN BK BX	PCB plug-in connector, female plug, 5.08 mm, No. of poles: 4, 90°, Tension clamp connection, Clamping range, max.: 3.31 mm ² , Box	4008190433208	78 pc(s).	Box
1671270000	BLZF 5.08/04/90B SN OR BX	PCB plug-in connector, female plug, 5.08 mm, No. of poles: 4, 90°, Tension clamp connection, Clamping range, max.: 3.31 mm ² , Box	4008190432973	78 pc(s).	Box