



Chipsmall Limited consists of a professional team with an average of over 10 year of expertise in the distribution of electronic components. Based in Hongkong, we have already established firm and mutual-benefit business relationships with customers from,Europe,America and south Asia,supplying obsolete and hard-to-find components to meet their specific needs.

With the principle of “Quality Parts,Customers Priority,Honest Operation,and Considerate Service”,our business mainly focus on the distribution of electronic components. Line cards we deal with include Microchip,ALPS,ROHM,Xilinx,Pulse,ON,Everlight and Freescale. Main products comprise IC,Modules,Potentiometer,IC Socket,Relay,Connector.Our parts cover such applications as commercial,industrial, and automotives areas.

We are looking forward to setting up business relationship with you and hope to provide you with the best service and solution. Let us make a better world for our industry!



Contact us

Tel: +86-755-8981 8866 Fax: +86-755-8427 6832

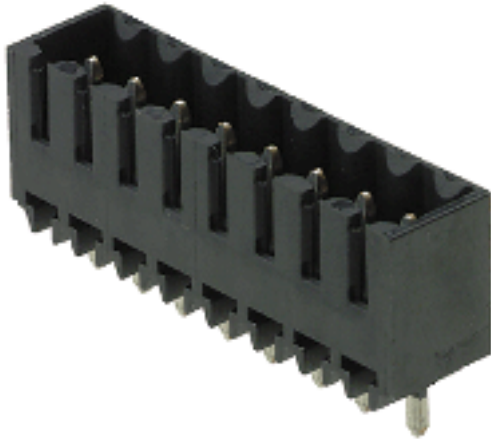
Email & Skype: info@chipsmall.com Web: www.chipsmall.com

Address: A1208, Overseas Decoration Building, #122 Zhenhua RD., Futian, Shenzhen, China



**System pitch 3.50 mm (0.138 inch)
SL-SMT 3.50/04/180G 3.2SN BK BX**

Weidmüller Interface GmbH & Co. KG
Klingenbergstraße 16
D-32758 Detmold
Germany
Fon: +49 5231 14-0
Fax: +49 5231 14-2083
www.weidmueller.com



High-temperature-resistant male connector with 3.50 mm pitch for all customary soldering methods. Optimised for automatic assembly. Packed in box or tape. 3.2 mm solder pin suitable for reflow and wave soldering. These male connectors have space for labelling and can be coded.

- 250 V (IEC) / 300 V (UL)
- 15 A (IEC) / 10 A (UL)

General ordering data

| | |
|------------------|---|
| Order No. | 1842340000 |
| Part designation | SL-SMT 3.50/04/180G 3.2SN BK BX |
| Version | PCB plug-in connector, male header, 3.50 mm, No. of poles: 4, 180°, Solder pin length: 3.2 mm, tinned, black, Reflow solder connection, Box |
| GTIN (EAN) | 4032248353682 |
| Qty. | 100 pc(s). |
| Packaging | Box |

System pitch 3.50 mm (0.138 inch) SL-SMT 3.50/04/180G 3.2SN BK BX

Weidmüller Interface GmbH & Co. KG
Klingenbergstraße 16
D-32758 Detmold
Germany
Fon: +49 5231 14-0
Fax: +49 5231 14-2083
www.weidmueller.com

Technical data

System parameters

| | | | |
|--|--------------------------|---|------------------------------|
| Fitted to PCB | Reflow solder connection | Outgoing elbow | 180° |
| Pitch in mm | 3.5 mm | Pitch in inch | 0.138 inch |
| No. of poles | 4 | Solder pin length | 3.2 mm |
| Can be coded | Yes | No. of rows | 1 |
| Number of solder pins per pole | 1 | Diameter of solder eyelet | 1.4 mm |
| Tolerance of the diameter of the solder eyelet | + 0,1 mm | L1 in mm | 10.5 mm |
| L1 in inch | 0.413 inch | Insulation resistance | 10 ³ Ω |
| Electric shock protection to DIN VDE 0470 | IP 10 | Electric shock protection to DIN VDE 57 106 | Safe from back-of-hand touch |

Material data

| | | | |
|--|--------|--|--------|
| Insulating material | LCP GF | Colour | black |
| Insulating material group | IIIa | Flammability class UL 94 | V-0 |
| CTI | ≥ 175 | Temperature of glow-wire test | 960 °C |
| Duration of glow-wire test | 30 s | Contact material | CuSn |
| Contact surface | tinned | Highest continuous operating temperature, min. | -25 °C |
| Highest continuous operating temperature, max. | 100 °C | Max. relative humidity during storage | 80 % |

DIN IEC rating data

| | | | |
|--|-------------------|--|--------|
| Rated current, min. No. of poles (Tu=20°C) | 15 A | Rated current, max. No. of poles (Tu=20°C) | 12 A |
| Rated current, no. of poles (Tu=40°C), min. | 13 A | Rated current, no. of poles (Tu=40°C), max. | 10 A |
| Rated voltage at overvoltage category/pollution degree III/3 | 160 V | Rated impulse withstand voltage for overvoltage class/pollution severity III/3 | 2.5 kV |
| Rated voltage for overvoltage class/pollution severity III/2 | 160 V | Rated impulse withstand voltage for overvoltage class/pollution severity III/2 | 2.5 kV |
| Rated voltage for overvoltage class/pollution severity II/2 | 320 V | Rated impulse withstand voltage for overvoltage class/pollution severity II/2 | 2.5 kV |
| Short-time withstand current resistance | 3 x 1s with 100 A | | |

CSA rating data

| | | | |
|-----------------------------|-------|-----------------------------|------|
| Rated voltage (Use group B) | 300 V | Rated current (use group B) | 10 A |
| Rated voltage (use group D) | 300 V | Rated current (use group D) | 10 A |

UL 1059 rating data

| | | | |
|-----------------------------|-------|-----------------------------|------|
| Rated voltage (use group B) | 300 V | Rated current (use group B) | 10 A |
| Rated voltage (use group D) | 300 V | Rated current (use group D) | 10 A |

Approvals

| | |
|----------------------|-------------------------|
| Approvals institutes | CSA; GOSTME25; UR; ROHS |
|----------------------|-------------------------|

Classifications

| | | | |
|------------|-------------|------------|-------------|
| ETIM 3.0 | EC001284 | eClass 5.1 | 27-26-07-04 |
| eClass 6.0 | 27-26-07-04 | | |

Datasheet**System pitch 3.50 mm (0.138 inch)
SL-SMT 3.50/04/180G 3.2SN BK BX****Weidmüller Interface GmbH & Co. KG**
Klingenbergstraße 16
D-32758 Detmold
Germany
Fon: +49 5231 14-0
Fax: +49 5231 14-2083
www.weidmueller.com**Technical data****Notes**

Notes

- Additional colours on request
- Gold-plated contact surfaces on request
- Rated current related to rated cross-section and min. No. of poles.
- Diameter of solder eyelet D = 1.4+0.1 mm
- Diameter of solder eyelet D = 1.5+0.1mm from 9-pole
- P on drg. = pitch
- Rated data refer only to the component itself. Clearance and creepage distances to other components are to be designed in accordance with the relevant application standards.

Downloads

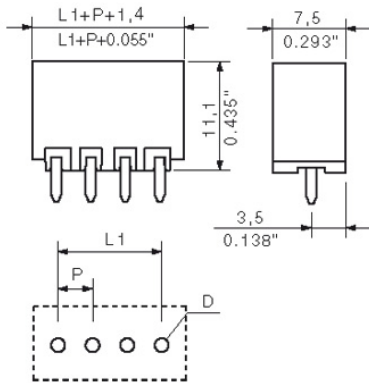
CAD Library (P-CAD Format - ASCII) [SL-SMT.LIA](#)
CAD Library (P-CAD Format - Standard) [SL-SMT.LIB](#)

Datasheet

**System pitch 3.50 mm (0.138 inch)
SL-SMT 3.50/04/180G 3.2SN BK BX**

Weidmüller Interface GmbH & Co. KG
Klingenbergstraße 16
D-32758 Detmold
Germany
Fon: +49 5231 14-0
Fax: +49 5231 14-2083
www.weidmueller.com

Drawings



System pitch 3.50 mm (0.138 inch) SL-SMT 3.50/04/180G 3.2SN BK BX

Weidmüller Interface GmbH & Co. KG
 Klingenbergstraße 16
 D-32758 Detmold
 Germany
 Fon: +49 5231 14-0
 Fax: +49 5231 14-2083
 www.weidmueller.com

Counterpart

BL 3.5/270



Female connectors with clamping yoke screw system for connecting conductors at 3.50 mm pitch. They include space for labelling and can be coded.

- 0.20 - 1.5 mm² (IEC) / 28 - 14 AWG (UL)
- 250 V (IEC) / 300 V (UL)
- 17 A (IEC) / 10 A (UL)

General ordering data

| Order No. | Part designation | Version | GTIN (EAN) | Qty. | Packaging |
|----------------------------|-------------------------|---|---------------|------------|-----------|
| 1639720000 | BL 3.50/04/270 SN BK BX | PCB plug-in connector, female plug, 3.50 mm, No. of poles: 4, 270°, Clamping yoke connection, Clamping range, max.: 1.5 mm ² , Box | 4008190277277 | 100 pc(s). | Box |
| 1639490000 | BL 3.50/04/270 SN OR BX | PCB plug-in connector, female plug, 3.50 mm, No. of poles: 4, 270°, Clamping yoke connection, Clamping range, max.: 1.5 mm ² , Box | 4008190277048 | 100 pc(s). | Box |

BLIDC 3.5 SN



Female connectors for fast wiring with IDC system for connecting conductors at 3.50 mm pitch. They include space for labelling and can be coded.

- 0.35 - 0.5 mm² (IEC) / 22 - 20 AWG (UL)
- 250 V (IEC) / 300 V (UL)
- 6 A (IEC) / 7 A (UL)

General ordering data

| Order No. | Part designation | Version | GTIN (EAN) | Qty. | Packaging |
|----------------------------|----------------------------|---|---------------|------------|-----------|
| 1750810000 | BLIDC 3.50/04/180 SN OR BX | PCB plug-in connector, female plug, 3.50 mm, No. of poles: 4, 90°/180°, IDC terminal, Clamping range, max.: 0.5 mm ² , Box | 4032248146109 | 100 pc(s). | Box |

System pitch 3.50 mm (0.138 inch) SL-SMT 3.50/04/180G 3.2SN BK BX

Weidmüller Interface GmbH & Co. KG
 Klingenbergstraße 16
 D-32758 Detmold
 Germany
 Fon: +49 5231 14-0
 Fax: +49 5231 14-2083
 www.weidmueller.com

Counterpart

BL 3.5/180



Female connectors with clamping yoke screw system for connecting conductors at 3.50 mm pitch. They include space for labelling and can be coded.

- 0.20 - 1.5 mm² (IEC) / 28 - 14 AWG (UL)
- 250 V (IEC) / 300 V (UL)
- 17 A (IEC) / 10 A (UL)

General ordering data

| Order No. | Part designation | Version | GTIN (EAN) | Qty. | Packaging |
|----------------------------|-----------------------------|---|---------------|------------|-----------|
| 1615690000 | BL 3.50/04/180 SN BK BX | PCB plug-in connector, female plug, 3.50 mm, No. of poles: 4, 180°, Clamping yoke connection, Clamping range, max.: 1.5 mm ² , Box | 4008190059033 | 100 pc(s). | Box |
| 1740641001 | BL 3.50/04/180 SN OR BX PRT | PCB plug-in connector, female plug, 3.50 mm, No. of poles: 4, 180°, Clamping yoke connection, Clamping range, max.: 1.5 mm ² , Box | 4008190961541 | 100 pc(s). | Box |
| 1606540000 | BL 3.50/04/180 SN DKGX BX | PCB plug-in connector, female plug, 3.50 mm, No. of poles: 4, 180°, Clamping yoke connection, Clamping range, max.: 1.5 mm ² , Box | 4008190000936 | 100 pc(s). | Box |
| 1620470000 | BL 3.50/04/180 SN GY BX | PCB plug-in connector, female plug, 3.50 mm, No. of poles: 4, 180°, Clamping yoke connection, Clamping range, max.: 1.5 mm ² , Box | 4008190157456 | 100 pc(s). | Box |
| 1597380000 | BL 3.50/04/180 SN OR BX | PCB plug-in connector, female plug, 3.50 mm, No. of poles: 4, 180°, Clamping yoke connection, Clamping range, max.: 1.5 mm ² , Box | 4008190111489 | 100 pc(s). | Box |

System pitch 3.50 mm (0.138 inch) SL-SMT 3.50/04/180G 3.2SN BK BX

Weidmüller Interface GmbH & Co. KG
 Klingenbergstraße 16
 D-32758 Detmold
 Germany
 Fon: +49 5231 14-0
 Fax: +49 5231 14-2083
 www.weidmueller.com

Counterpart

BL 3.5/180LH



Female connectors with clamping yoke screw system for connecting conductors at 3.50 mm pitch. They include space for labelling and can be coded.

- 0.20 - 1.5 mm² (IEC) / 28 - 14 AWG (UL)
- 250 V (IEC) / 300 V (UL)
- 17 A (IEC) / 10 A (UL)

General ordering data

| Order No. | Part designation | Version | GTIN (EAN) | Qty. | Packaging |
|----------------------------|---------------------------|---|---------------|------------|-----------|
| 1687900000 | BL 3.50/04/180LH SN BK BX | PCB plug-in connector, female plug, 3.50 mm, No. of poles: 4, 180°, Clamping yoke connection, Clamping range, max.: 1.5 mm ² , Box | 4008190853457 | 100 pc(s). | Box |
| 1687670000 | BL 3.50/04/180LH SN OR BX | PCB plug-in connector, female plug, 3.50 mm, No. of poles: 4, 180°, Clamping yoke connection, Clamping range, max.: 1.5 mm ² , Box | 4008190853228 | 100 pc(s). | Box |

BL 3.5/90F



Female connectors with clamping yoke screw system for connecting conductors at 3.50 mm pitch. They include space for labelling and can be coded.

- 0.20 - 1.5 mm² (IEC) / 28 - 14 AWG (UL)
- 250 V (IEC) / 300 V (UL)
- 17 A (IEC) / 10 A (UL)

General ordering data

| Order No. | Part designation | Version | GTIN (EAN) | Qty. | Packaging |
|----------------------------|-------------------------|--|---------------|------------|-----------|
| 1639260000 | BL 3.50/04/90F SN BK BX | PCB plug-in connector, female plug, 3.50 mm, No. of poles: 4, 90°, Clamping yoke connection, Clamping range, max.: 1.5 mm ² , Box | 4008190276805 | 100 pc(s). | Box |
| 1639030000 | BL 3.50/04/90F SN OR BX | PCB plug-in connector, female plug, 3.50 mm, No. of poles: 4, 90°, Clamping yoke connection, Clamping range, max.: 1.5 mm ² , Box | 4008190276577 | 100 pc(s). | Box |

System pitch 3.50 mm (0.138 inch) SL-SMT 3.50/04/180G 3.2SN BK BX

Weidmüller Interface GmbH & Co. KG
 Klingenbergstraße 16
 D-32758 Detmold
 Germany
 Fon: +49 5231 14-0
 Fax: +49 5231 14-2083
 www.weidmueller.com

Counterpart

BL 3.5/90



Female connectors with clamping yoke screw system for connecting conductors at 3.50 mm pitch. They include space for labelling and can be coded.

- 0.20 - 1.5 mm² (IEC) / 28 - 14 AWG (UL)
- 250 V (IEC) / 300 V (UL)
- 17 A (IEC) / 10 A (UL)

General ordering data

| Order No. | Part designation | Version | GTIN (EAN) | Qty. | Packaging |
|----------------------------|------------------------|--|---------------|------------|-----------|
| 1638800000 | BL 3.50/04/90 SN BK BX | PCB plug-in connector, female plug, 3.50 mm, No. of poles: 4, 90°, Clamping yoke connection, Clamping range, max.: 1.5 mm ² , Box | 4008190276348 | 100 pc(s). | Box |
| 1638570000 | BL 3.50/04/90 SN OR BX | PCB plug-in connector, female plug, 3.50 mm, No. of poles: 4, 90°, Clamping yoke connection, Clamping range, max.: 1.5 mm ² , Box | 4008190276119 | 100 pc(s). | Box |

BL 3.5/270F



Female connectors with clamping yoke screw system for connecting conductors at 3.50 mm pitch. They include space for labelling and can be coded.

- 0.20 - 1.5 mm² (IEC) / 28 - 14 AWG (UL)
- 250 V (IEC) / 300 V (UL)
- 17 A (IEC) / 10 A (UL)

General ordering data

| Order No. | Part designation | Version | GTIN (EAN) | Qty. | Packaging |
|----------------------------|--------------------------|---|---------------|------------|-----------|
| 1640180000 | BL 3.50/04/270F SN BK BX | PCB plug-in connector, female plug, 3.50 mm, No. of poles: 4, 270°, Clamping yoke connection, Clamping range, max.: 1.5 mm ² , Box | 4008190277741 | 100 pc(s). | Box |
| 1639950000 | BL 3.50/04/270F SN OR BX | PCB plug-in connector, female plug, 3.50 mm, No. of poles: 4, 270°, Clamping yoke connection, Clamping range, max.: 1.5 mm ² , Box | 4008190277505 | 100 pc(s). | Box |

System pitch 3.50 mm (0.138 inch) SL-SMT 3.50/04/180G 3.2SN BK BX

Weidmüller Interface GmbH & Co. KG
Klingenbergstraße 16
D-32758 Detmold
Germany
Fon: +49 5231 14-0
Fax: +49 5231 14-2083
www.weidmueller.com

Counterpart

BL 3.5/180F



Female connectors with clamping yoke screw system for connecting conductors at 3.50 mm pitch. They include space for labelling and can be coded.

- 0.20 - 1.5 mm² (IEC) / 28 - 14 AWG (UL)
- 250 V (IEC) / 300 V (UL)
- 17 A (IEC) / 10 A (UL)

General ordering data

| Order No. | Part designation | Version | GTIN (EAN) | Qty. | Packaging |
|----------------------------|------------------------------|---|---------------|------------|-----------|
| 1740731001 | BL 3.50/04/180F SN OR BX PRT | PCB plug-in connector, female plug, 3.50 mm, No. of poles: 4, 180°, Clamping yoke connection, Clamping range, max.: 1.5 mm ² , Box | 4008190961732 | 100 pc(s). | Box |
| 1606660000 | BL 3.50/04/180F SN OR BX | PCB plug-in connector, female plug, 3.50 mm, No. of poles: 4, 180°, Clamping yoke connection, Clamping range, max.: 1.5 mm ² , Box | 4008190174620 | 100 pc(s). | Box |
| 1615800000 | BL 3.50/04/180F SN BK BX | PCB plug-in connector, female plug, 3.50 mm, No. of poles: 4, 180°, Clamping yoke connection, Clamping range, max.: 1.5 mm ² , Box | 4008190062279 | 100 pc(s). | Box |

BLIDCB 3.5



Female connectors for fast wiring with IDC system for connecting conductors at 3.50 mm pitch. They include space for labelling and can be coded.

- 0.35 - 0.5 mm² (IEC) / 22 - 20 AWG (UL)
- 250 V (IEC) / 300 V (UL)
- 6 A (IEC) / 7 A (UL)

General ordering data

| Order No. | Part designation | Version | GTIN (EAN) | Qty. | Packaging |
|----------------------------|---------------------------|---|---------------|-----------|-----------|
| 1751400000 | BLIDCB 3.50/04/- SN OR BX | PCB plug-in connector, female plug, 3.50 mm, No. of poles: 4, 90°/270°, IDC terminal, Clamping range, max.: 0.5 mm ² , Box | 4032248174331 | 10 pc(s). | Box |
| 1770690000 | BLIDCB 3.50/04/- SN BK BX | PCB plug-in connector, female plug, 3.50 mm, No. of poles: 4, 90°/270°, IDC terminal, | 4032248174478 | 10 pc(s). | Box |

System pitch 3.50 mm (0.138 inch) SL-SMT 3.50/04/180G 3.2SN BK BX

Weidmüller Interface GmbH & Co. KG
 Klingenbergstraße 16
 D-32758 Detmold
 Germany
 Fon: +49 5231 14-0
 Fax: +49 5231 14-2083
 www.weidmueller.com

Counterpart

Clamping range, max.: 0.5 mm², Box

BLIDC 3.5F SN



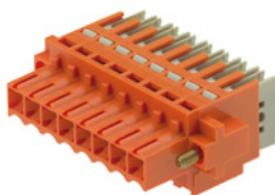
Female connectors for fast wiring with IDC system for connecting conductors at 3.50 mm pitch. They include space for labelling and can be coded.

- 0.35 - 0.5 mm² (IEC) / 22 - 20 AWG (UL)
- 250 V (IEC) / 300 V (UL)
- 6 A (IEC) / 7 A (UL)

General ordering data

| Order No. | Part designation | Version | GTIN (EAN) | Qty. | Packaging |
|----------------------------|-----------------------------|---|---------------|------------|-----------|
| 1771110000 | BLIDC 3.50/04/180F SN BK BX | PCB plug-in connector, female plug, 3.50 mm, No. of poles: 4, 90°/180°, IDC terminal, Clamping range, max.: 0.5 mm ² , Box | 4032248146826 | 100 pc(s). | Box |
| 1751110000 | BLIDC 3.50/04/180F SN OR BX | PCB plug-in connector, female plug, 3.50 mm, No. of poles: 4, 90°/180°, IDC terminal, Clamping range, max.: 0.5 mm ² , Box | 4032248146659 | 100 pc(s). | Box |

BLIDCB 3.5F



Female connectors for fast wiring with IDC system for connecting conductors at 3.50 mm pitch. They include space for labelling and can be coded.

- 0.35 - 0.5 mm² (IEC) / 22 - 20 AWG (UL)
- 250 V (IEC) / 300 V (UL)
- 6 A (IEC) / 7 A (UL)

General ordering data

| Order No. | Part designation | Version | GTIN (EAN) | Qty. | Packaging |
|----------------------------|---------------------------|---|---------------|-----------|-----------|
| 1770760000 | BLIDCB 3.50/04-F SN BK BX | PCB plug-in connector, female plug, 3.50 mm, No. of poles: 4, 90°/270°, IDC terminal, Clamping range, max.: 0.5 mm ² , Box | 4032248174546 | 10 pc(s). | Box |
| 1751470000 | BLIDCB 3.50/04-F SN OR BX | PCB plug-in connector, female plug, 3.50 mm, No. of poles: 4, 90°/270°, IDC terminal, | 4032248174409 | 10 pc(s). | Box |

Datasheet

**System pitch 3.50 mm (0.138 inch)
SL-SMT 3.50/04/180G 3.2SN BK BX**

Weidmüller Interface GmbH & Co. KG
Klingenbergstraße 16
D-32758 Detmold
Germany
Fon: +49 5231 14-0
Fax: +49 5231 14-2083
www.weidmueller.com

Counterpart

Clamping range, max.: 0.5
mm², Box