



Chipsmall Limited consists of a professional team with an average of over 10 year of expertise in the distribution of electronic components. Based in Hongkong, we have already established firm and mutual-benefit business relationships with customers from,Europe,America and south Asia,supplying obsolete and hard-to-find components to meet their specific needs.

With the principle of “Quality Parts,Customers Priority,Honest Operation,and Considerate Service”,our business mainly focus on the distribution of electronic components. Line cards we deal with include Microchip,ALPS,ROHM,Xilinx,Pulse,ON,Everlight and Freescale. Main products comprise IC,Modules,Potentiometer,IC Socket,Relay,Connector.Our parts cover such applications as commercial,industrial, and automotives areas.

We are looking forward to setting up business relationship with you and hope to provide you with the best service and solution. Let us make a better world for our industry!



Contact us

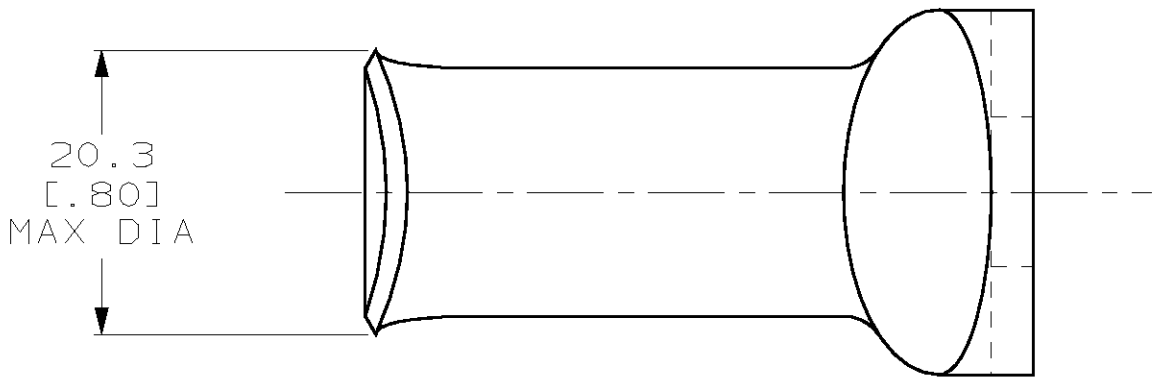
Tel: +86-755-8981 8866 Fax: +86-755-8427 6832

Email & Skype: info@chipsmall.com Web: www.chipsmall.com

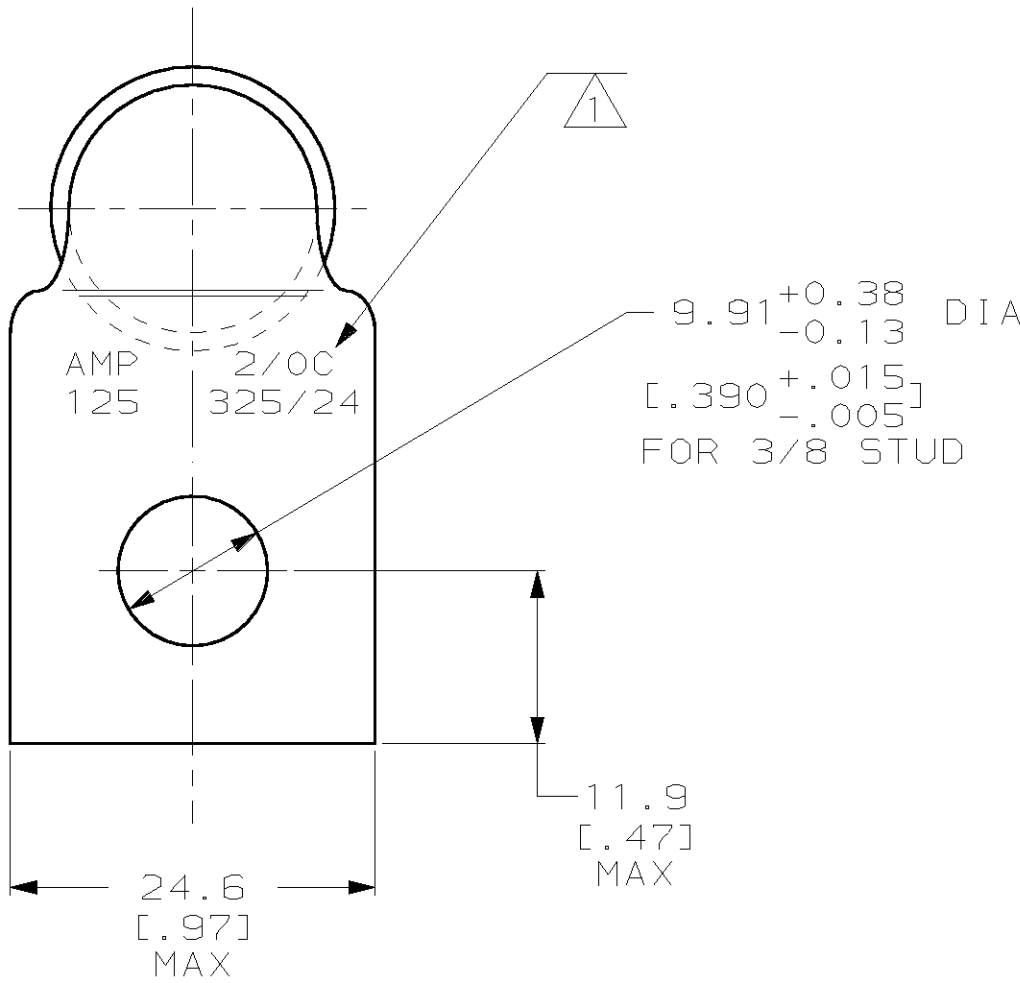
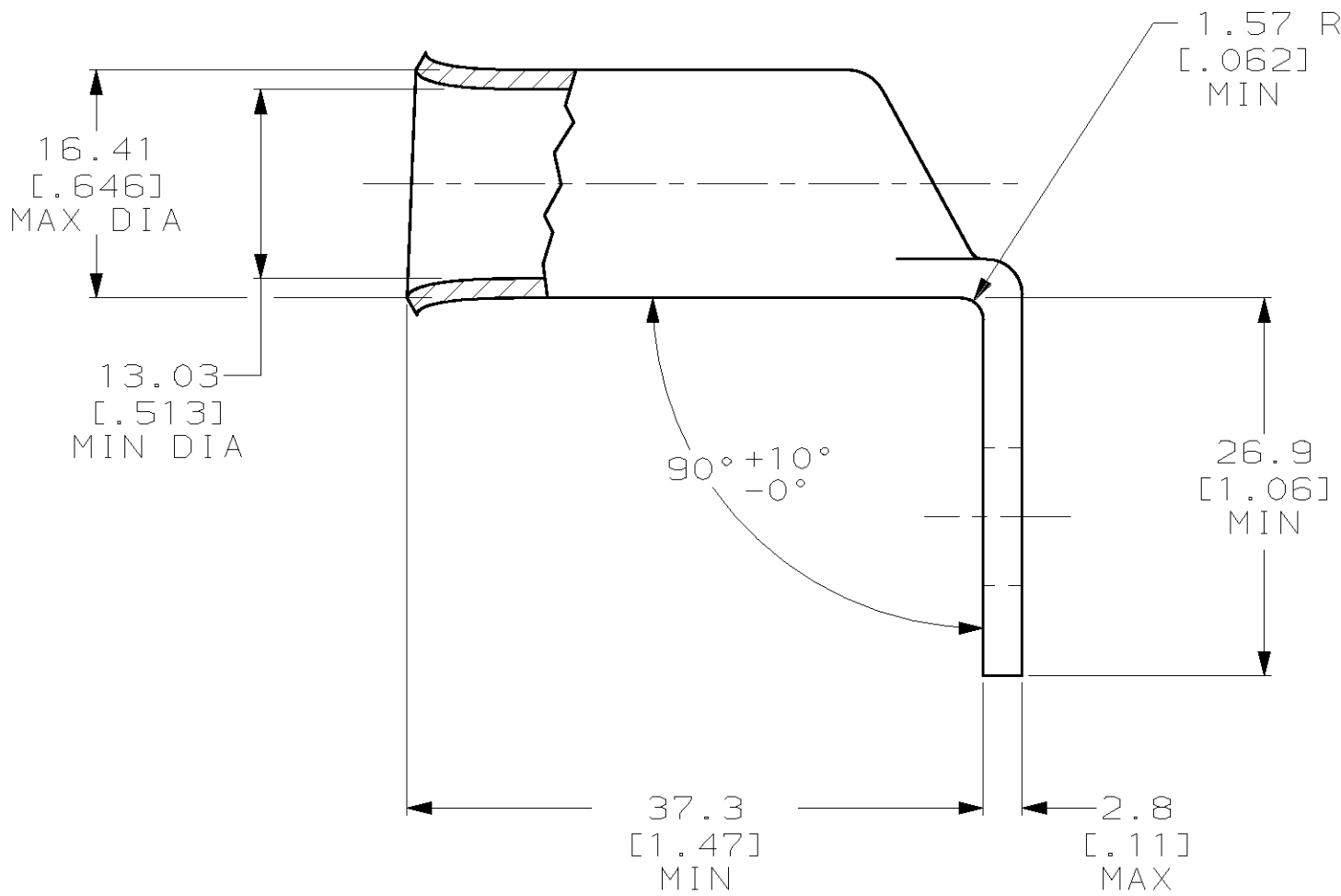
Address: A1208, Overseas Decoration Building, #122 Zhenhua RD., Futian, Shenzhen, China



LOC	DIST	REVISIONS				
G	86	P	LTR	DESCRIPTION	DATE	APVD
		D		REV PER 063A-0561-01	070CT02	MS



1 STAMP AMP 2/0C 125 325/24 APPROX AS SHOWN



184259-1

PART
NUMBER

AMP INCORPORATED CUSTOMER SERVICE SYSTEMS

RECOMMENDED OPERATING TEMPERATURE:
170° MAX

FOR ADDITIONAL PRODUCT
INFORMATION OR COPIES OF DRAWINGS
AND TECHNICAL DOCUMENTS

PRODUCT INFORMATION CENTER
1-800-522-6752

VOLTAGE RATING:
NOT APPLICABLE

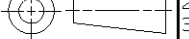
FOR APPLICATION
TOOLING INFORMATION

TOOLING ASSISTANCE CENTER
1-800-722-1111

WIRE CROSS SECTIONAL AREA RANGE:
60.6-76.3mm² [119,500-150,500] CIR MILS
SOLID OR STRANDED

FOR ORDER ENTRY

1-800-526-5142

THIS DRAWING IS A CONTROLLED DOCUMENT FOR AMP INCORPORATED. IT IS SUBJECT TO CHANGE AND THE CONTROLLING ENGINEERING ORGANIZATION SHOULD BE CONTACTED FOR THE LATEST REVISION.		DWN DK SCHRUM CHK WJ VOCKROTH APVD JL MECKLEY	20DEC95 02JAN96 02JAN96	AMP Incorporated Harrisburg, PA 17105-3608		
DIMENSIONS: mm [INCHES]		TOLERANCES UNLESS OTHERWISE SPECIFIED:		NAME TERMINAL, BENT 90, AMPPOWER, WIRE SIZE: 2/0 AWG		
		0 PLC +- 1 PLC +- 2 PLC +- 3 PLC +- 4 PLC +- ANGLES +- FINISH		PRODUCT SPEC 108-30200 APPLICATION SPEC -		
MATERIAL COPPER PER ASTM B-75 ANNEALED		TIN PLATE 0.00381 [0.000150] MIN THK PER ASTM B545		SIZE A2	CAGE CODE 00779	DRAWING NO C-184259
CUSTOMER DRAWING				SCALE 2:1	SHEET 1 OF 1	REV D