



Chipsmall Limited consists of a professional team with an average of over 10 year of expertise in the distribution of electronic components. Based in Hongkong, we have already established firm and mutual-benefit business relationships with customers from,Europe,America and south Asia,supplying obsolete and hard-to-find components to meet their specific needs.

With the principle of “Quality Parts,Customers Priority,Honest Operation,and Considerate Service”,our business mainly focus on the distribution of electronic components. Line cards we deal with include Microchip,ALPS,ROHM,Xilinx,Pulse,ON,Everlight and Freescale. Main products comprise IC,Modules,Potentiometer,IC Socket,Relay,Connector.Our parts cover such applications as commercial,industrial, and automotives areas.

We are looking forward to setting up business relationship with you and hope to provide you with the best service and solution. Let us make a better world for our industry!



## Contact us

Tel: +86-755-8981 8866 Fax: +86-755-8427 6832

Email & Skype: info@chipsmall.com Web: www.chipsmall.com

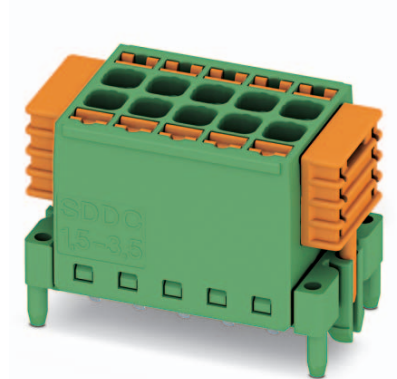
Address: A1208, Overseas Decoration Building, #122 Zhenhua RD., Futian, Shenzhen, China



Order No.: 1848710

Type: SDDC 1,5/ 9-PV-3,5

Plug component, Push-in spring connection



The illustration shows the 5-pos. version

## 1 Main features



- |                           |                           |                        |                     |
|---------------------------|---------------------------|------------------------|---------------------|
| • Number of positions     | 9                         | • Nominal current      | 8 A                 |
| • Conductor cross section | 1.5 mm <sup>2</sup>       | • Nominal voltage      | 160 V               |
| • Color                   | green                     | • Connection direction | 0 °                 |
| • Pitch                   | 3.50 mm                   | • Type of packaging    | packed in cardboard |
| • Connection method       | Push-in spring connection |                        |                     |

## 2 Your advantages

- ✓ SKEDD direct plug-in technology enables flexible positioning on the PCB
- ✓ Reduced component and process costs: simple insertion by hand and vibration-resistant connection
- ✓ Time saving push-in connection, tools not required
- ✓ Intuitive use through colour coded actuation lever
- ✓ Quick and convenient testing using integrated test option



Make sure you always use the latest documentation.  
It can be downloaded at: [phoenixcontact.net/product/1848710](http://phoenixcontact.net/product/1848710)

**3 Table of contents**

1	Main features.....	1
2	Your advantages .....	1
3	Table of contents .....	2
4	3D model in PDF can be activated (Acrobat Reader only).....	3
5	Item properties.....	4
	5.1 Material data .....	4
	5.2 Dimensions .....	4
6	Series drawing.....	5
7	Packaging information .....	6
8	Application.....	6
	8.1 Temperature limit values .....	6
9	Mechanical tests.....	7
	9.1 Pull-out test .....	7
10	Electrical tests .....	8
	10.1 Electrical data .....	8
	10.2 Air and creepage distances .....	8
	10.3 Electrical function .....	8
	10.4 Temperature cycles.....	8
11	Current carrying capacity/derating curves .....	9
12	Environmental and durability tests .....	10
	12.1 Vibration test .....	10
13	Classification for connectors.....	10
14	Approvals .....	10
15	Commercial data .....	10
16	Project documentation.....	10
17	Accessories.....	10
	17.1 Combination tests.....	12

1848710 SDDC 1,5/ 9-PV-3,5

4 3D model in PDF can be activated (Acrobat Reader only)



**1848710 SDDC 1,5/ 9-PV-3,5****5 Item properties**

Order No.	1848710
Type	SDDC 1,5/ 9-PV-3,5
Range of articles	SDDC 1,5/...-PV
Pitch	3.50 mm
Number of positions	9
Connection method	Push-in spring connection
Mounting type	SKEDD - Direct plug-in technology
Pin layout	Linear double pinning

**5.1 Material data**

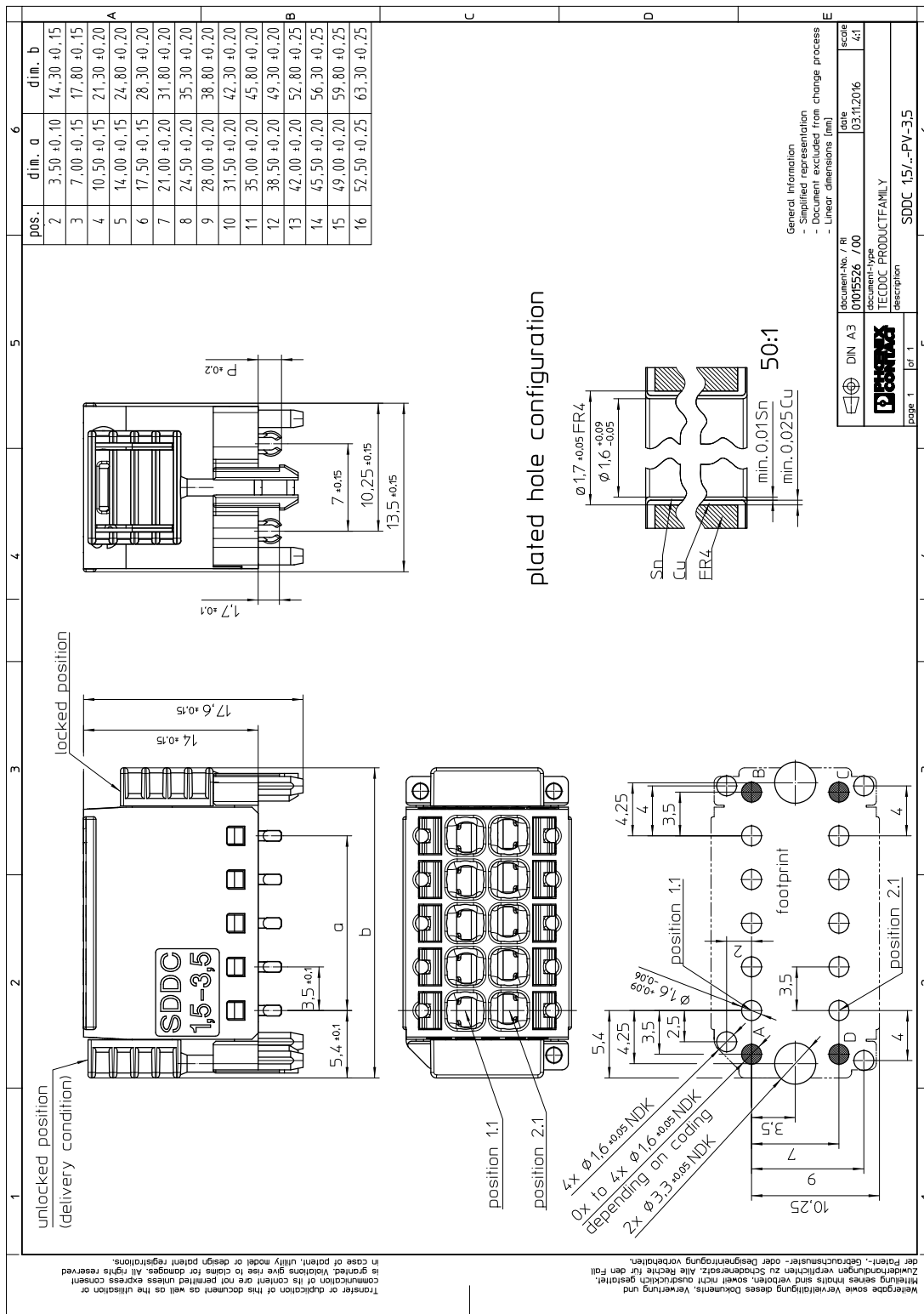
<b>Material of metal parts</b>		
Note	WEEE/RoHS-compliant, whisker-free acc. to IEC 60068-2-82/JEDEC JESD 201	
Contact material	Cu alloy	
Terminal point surface	Sn 4 µm ... 8 µm	
Surface contact area	Sn 4 µm ... 8 µm	
Surface characteristics	hot-dip tin-plated	
<b>Insulating material data</b>		
Insulating material	Housing	
	PA	PBT
CTI according to IEC 60112	600	600
Flammability rating according to UL 94	V0	V0
Color	green (6021)	
Glow wire flammability index GWFI according to EN 60695-2-12	850	
Glow wire ignition temperature GWIT according to EN 60695-2-13	775	
Temperature for the ball pressure test according to EN 60695-10-2	125 °C	

**5.2 Dimensions**

Dimension a	28 mm
Length	13.5 mm
Width	38.8 mm
Total height	17.6 mm
Pin dimensions	0,9 x 2,0 mm
Pin spacing	7.00 mm
Hole diameter	1.6 mm

1848710 SDDC 1,5/ 9-PV-3,5

6 Series drawing



**1848710 SDDC 1,5/ 9-PV-3,5****7 Packaging information**

Type of packaging	packed in cardboard
Pieces per package	100

**8 Application****8.1 Temperature limit values**

Ambient temperature (storage/transport)	-40 °C ... 70 °C
Ambient temperature (assembly)	-5 °C ... 100 °C
Ambient temperature (operation)	-40 °C



**1848710 SDDC 1,5/ 9-PV-3,5****9 Mechanical tests****9.1 Pull-out test**

Termination and connection method: pull-out test

Specification	IEC 60999-1:1999-11
Result	Test passed
Conductor cross section/conductor type/tractive force actual value	0.2 mm <sup>2</sup> / solid / > 10 N
Conductor cross section/conductor type/tractive force actual value	0.2 mm <sup>2</sup> / stranded / > 10 N
Conductor cross section/conductor type/tractive force actual value	1.5 mm <sup>2</sup> / solid / > 40 N
Conductor cross section/conductor type/tractive force actual value	1.5 mm <sup>2</sup> / stranded / > 40 N
Conductor cross section/conductor type/tractive force actual value	AWG 16 / stranded / > 40 N



**1848710 SDDC 1,5/ 9-PV-3,5****10 Electrical tests****10.1 Electrical data**

Rated current / conductor cross section	8 A / 1.5 mm <sup>2</sup>
Rated insulation voltage (III/2)	160 V
Rated surge voltage (III/2)	2.5 kV
Contact resistance	1.4 mΩ
Degree of pollution	2

**10.2 Air and creepage distances**

Component	Plug component		
Specification	IEC 60664-1:2007-04		
Mains type	unearthed mains		
Insulating material group	I		
Comparative tracking index (IEC 60112:2003-01)	CTI 600		
Rated insulation voltage	160 V	160 V	400 V
Rated surge voltage	2.5 kV	2.5 kV	2.5 kV
Degree of pollution	3	2	2
Overvoltage category	III	III	II
Minimum clearance case A (inhomogeneous field)	1.5 mm	1.5 mm	1.5 mm
Minimum value of the creepage path requirement in acc. with table	2 mm	0.8 mm	2 mm

**10.3 Electrical function**

Specification	IEC 60999-1:1999-11
Result	Test passed
Voltage drop	Voltage drop (U) after the load $\leq 15$ mV
Conductor cross section, flexible	
Conductor cross section, solid	

**10.4 Temperature cycles**

Specification	IEC 60999-1:1999-11
Result	Test passed
Voltage drop	Voltage drop (U) after the load $\leq 22.5$ mV or $1.5 \times U_{\text{after 24 h}}$ The small value is to be used.
Test current	4 A DC
Temperature cycles	
Conductor cross section, flexible	
Conductor cross section, solid	

**1848710 SDDC 1,5/ 9-PV-3,5****11 Current carrying capacity/derating curves**

Specification	IEC 61984:2008-10
Note	Representation based on IEC 60512-5-2:2002-02
Reduction factor	0.8
Number of positions	See diagram
Conductor cross section	1.5 mm <sup>2</sup>

**Type: SDDC 1,5/...-PV-3,5**

**1848710 SDDC 1,5/ 9-PV-3,5****12 Environmental and durability tests****12.1 Vibration test**

Specification	IEC 60068-2-6:2007-12
Result	Test passed
Frequency	10 - 150 - 10 Hz
Sweep speed	1 octave/min
Amplitude	0.35 mm (10 - 60.1 Hz)
Acceleration	5 g (60.1 - 150 Hz)
Test duration per axis	2.5 h
Test directions	X-, Y- and Z-axis
Requirements	
Note	

**13 Classification for connectors**

Specification	IEC 61984:2008-10
Main features	Connectors without switching capacity (COC)
Construction form	Fixed connectors
Strain relief elements	without strain relief
Connection method	Can be reconnected
Protection against electric shock	Not encapsulated - touch-proof when inserted
Protective conductor	without PE
Lock	no
Connection method	Screwless terminal points

**14 Approvals****15 Commercial data**

Order No.	1848710
Type	SDDC 1,5/ 9-PV-3,5
Pieces per package	100
Net weight	2.22 g
GTIN	4055626307183
Customs tariff number	Information that applies locally, see link on page 1
Country of origin	Information that applies locally, see link on page 1

**16 Project documentation**

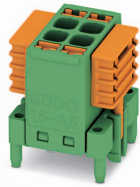
Project documentation	M6
-----------------------	----

**17 Accessories**

Description	Order No.	Type
Coding profile, is inserted into the hole in the plug, red insulating material	1985564	CP-PT 1,5
	0804073	SK 3,5/2,8:FORTL.ZAHLEN
	0825121	SK 2,8 REEL P3,5 WH CUS
	0803883	SK U/2,8 WH:UNBEDRUCKT

**1848710 SDDC 1,5/ 9-PV-3,5**

Description	Order No.	Type
	0805205	SK 2,8 WH:REEL
	1944372	MPS-MT 1-S
	1982800	MPS-MT 1-S4-B RD
Crimping pliers, for ferrules without insulating collar according to DIN 46228 Part 1 and ferrules with insulating collar according to DIN 46228 Part 4, 0.25 mm <sup>2</sup> ... 6.0 mm <sup>2</sup> , lateral entry, trapezoidal crimp	1212034	CRIMPFOX 6
	3203037	Al 0,25- 8 YE
	3200014	Al 0,5 - 8 WH
	3200881	Al 0,5 - 8 WH -1000
	3201275	Al 0,5 -10 WH
	3201288	Al 0,75-10 GY
	3200182	Al 1 -10 RD
	3202481	A 0,5 - 8
	3202494	A 0,5 -10
	3202504	A 0,75- 8
	3200234	A 0,75-10
	3202517	A 1 - 8
	3200250	A 1 -10

**1848710 SDDC 1,5/ 9-PV-3,5****17.1 Combination tests****SDDC 1,5/..-PV**

Specification	IEC 61984			
<b>Mechanical tests (A)</b>				
Insertion/withdrawal force per position	approx. 8 N / 6 N			
Polarization when inserted Requirement > 20 N	Test passed			
Contact holder in insert Requirements > 20 N				
<b>Endurance tests (B)</b>				
Contact resistance R <sub>1</sub>	1.4 mΩ			
Insertion/withdrawal cycles	25			
Contact resistance R <sub>2</sub>	1.5 mΩ			
Rated impulse voltage at sea level Voltage waveform ≥ (1.2/50 μs)	2.95 kV			
Power-frequency withstand voltage Voltage waveform ≥ (50/60 Hz)	1.39 kV			
Insulation resistance Requirements > 5 MΩ	> 0.2 TΩ			
<b>Thermal tests (C)</b>				
Tested number of positions	16			
Tested conductor cross section	1.5 mm <sup>2</sup>			
Test current	8 A			
Upper limiting temperature Requirements < 100°C	Test passed			
<b>Climatic tests (D)</b>				
Test sequence 1: low temperature storage	-40 °C/2 h			
Test sequence 2: heat storage	100 °C/168 h			
Test sequence 3: noxious gas storage (ISO 6988)	0.2 dm <sup>3</sup> SO <sub>2</sub> on 300 dm <sup>3</sup> / 40 °C/1 cycle			
Rated impulse voltage at sea level Voltage waveform ≥ (1.2/50 μs)	2.95 kV			
Power-frequency withstand voltage Voltage waveform ≥ (50/60 Hz)	1.39 kV			
<b>Environmental and endurance tests (E)</b>				
Specification	IEC 60529:1989-11 + AMD 1:1999-11 + AMD 2:2013-08			
Type of protection (when plugged in)	Finger safety with IP20 test finger			