



Chipsmall Limited consists of a professional team with an average of over 10 year of expertise in the distribution of electronic components. Based in Hongkong, we have already established firm and mutual-benefit business relationships with customers from,Europe,America and south Asia,supplying obsolete and hard-to-find components to meet their specific needs.

With the principle of “Quality Parts,Customers Priority,Honest Operation,and Considerate Service”,our business mainly focus on the distribution of electronic components. Line cards we deal with include Microchip,ALPS,ROHM,Xilinx,Pulse,ON,Everlight and Freescale. Main products comprise IC,Modules,Potentiometer,IC Socket,Relay,Connector.Our parts cover such applications as commercial,industrial, and automotives areas.

We are looking forward to setting up business relationship with you and hope to provide you with the best service and solution. Let us make a better world for our industry!



Contact us

Tel: +86-755-8981 8866 Fax: +86-755-8427 6832

Email & Skype: info@chipsmall.com Web: www.chipsmall.com

Address: A1208, Overseas Decoration Building, #122 Zhenhua RD., Futian, Shenzhen, China



SAK-Series	SAK-Series TS 35	A
	SAK-Series TS 32	B
	SAK-Series combination foot TS 35 + TS 32	C
	SAK-Series for special applications	D
	AKZ-Series TS 15	E
	Multi-pole terminal strips	F
	KLBÜ shielded connection	G
	Busbars / Terminal rails	H
	Accessories	I
	Tools and ferrules	J
	Marking systems	K

Appendix	Technical appendix	W
	Index Search according to type or order number, Addresses worldwide	X

“SAK – A real classic that became synonymous with connection technology”



Weidmüller has an interesting story to tell about SAK terminals. SAK (German abbreviation for „side-by-side mountable terminals“) is the designation for a terminal that has proven itself on the market for more than 55 years. Using the side-by-side mounting principle, electrical terminals made of plastic replaced breakable porcelain constructions in switchgear cabinets.

One could as a result say: „SAK was the first family of terminals in the world that helped the electrical industry make a technological breakthrough”.

Further developments of the terminals and passive connection technology form the Weidmüller group’s traditional core business.

SAK wire connections – synonymous with reliable connections and product variety.

This long-term experience in the market enabled many improvements to be made. Nobody can claim that any other terminal on this earth has had as much know-how put into it as the SAK.

A great deal of know-how has been put into the inconspicuous insulating body with „clamping function” for electrical wires. This is because terminals have to withstand all kinds of unfavourable conditions. The connections system is chosen according to the respective application.

When looked at more closely, the demands made of an allegedly trivial component such as a terminal are considerable. Appropriately, the EN 60 947-7-1 defines terminals and cable connectors as equipment for connecting and joining electrical wires. Terminals can be mounted side-by-side or staggered, have two or several, independently functioning connection points, and are insulated both from one another and their mountings. They are mounted, for example, onto mounting rails.

Or

“Once upon a time there was a company called Weidmüller that created the best terminals in the world using plastic and metal”.

As well as joining the wiring, terminals are also equipped with further functions:

when fitted with markers, terminals make it possible to clearly arrange „electrical installations”. Moreover, they create a defined connection point that can be extended as required. From this point, the wiring is routed to individual devices in the switchgear cabinet or from the switchgear cabinet to the devices. Terminal blocks increase serviceability, because electrical measurements can be carried out on them, targeted circuits can be opened or protected with appropriate protective elements.

Furthermore, cross-connections can be used to distribute potentials.

A clamping yoke system is used for securing the wiring in SAK terminals (see figure 1). The tension clamp system optimally combines the specific features of steel and copper. This system has proven itself millions of times over in electrical installations: in rough and aggressive industrial atmospheres, in power stations, ships and railway vehicles as well as in building automation.

The clamping yoke and the terminal screw used in Weidmüller’s clamping yoke system are made from case-hardened steel.

The clamping yoke unit with a high-strength terminal screw produces the required contact force and presses the conductor against the busbar, which is made either of copper or high-quality brass. The latter being tin coated.

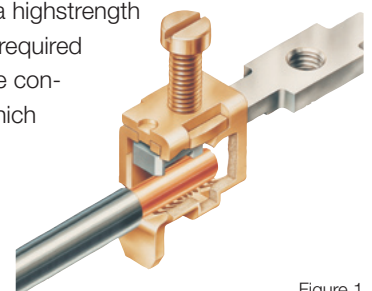


Figure 1

High contact forces with the patented connection system



This ensures a „close fitting” and permanent contact with a low contact resistance. A gas-tight, vibration-resistant connection is created between the conductor and the busbar.

Because even a very good electrically conducting material is only as good as the contact force applied. Weidmüller's patented connection system guarantees high contact forces. This means that it is predestined for use in corrosion-promoting environments; in addition, it is maintenance free. A further aspect is mounting and maintenance on an international scale, made possible by the world-renowned screw connection. One decisive factor for a perfect terminal is the insulating material.

In order to meet the demands placed on terminals, it is necessary to use different insulating materials that are tailor-made for the application – thermoplastic or thermosetting plastic. All insulating materials used by Weidmüller are free from noxious substances and contain no paint pigments based on cadmium. The SAK family especially offers the option of specifically coordinating the terminals with material requirements in mind. In this case, Weidmüller offers the same construction with different insulation materials.

Plastics for terminals – thermoplastics and thermosetting plastics

Thermal plastics are a polyamide (PA), and are one of the most frequently used technical plastics. The advantage of this material is its good electrical and mechanical characteristics, its flexibility and its lack of fracture susceptibility. In addition, this material offers good fire resistance due to its chemical structure without the need for added flameproofing substances. Engineers speak of a so-called „inherent flame protection”. The continuous operating temperature of the SAK range is 100 °C, and at the same time offering V2 fire resistance according to UL 94.

Thermosetting plastics possess high dimensional stability, absorb a negligible amount of water, have a very high tracking resistance and excellent fire resistance. The continuous operating temperature is higher in comparison with that of thermoplastics. With increased thermal load, the dimensional stability of thermosetting plastics is better than that of thermoplastics. Their disadvantage: Thermosetting plastics have less flexibility in comparison with thermoplastics.

A further advantage of the SAK family is the large choice of different locking mechanisms. Its mounting rail designs (MR) offer the user the highest possible degree of convenience: TS 35 and TS 32 as well as a combi foot.

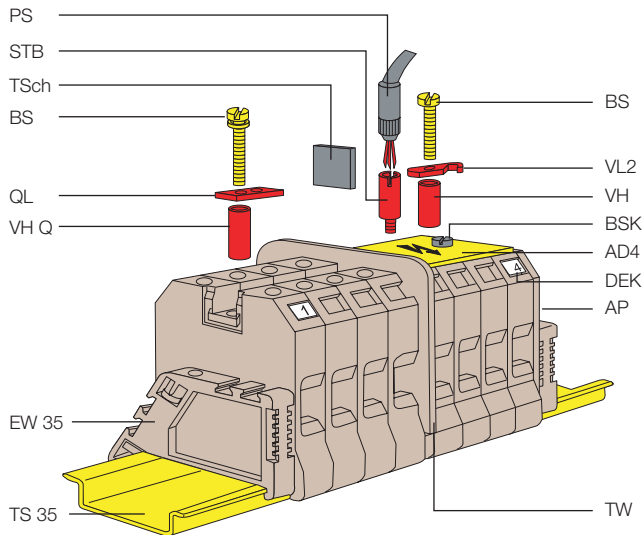
Technical background to the screw connection

A spring element forms the basis for Weidmüller's clamping yoke. Turning the terminal screw expands the upper flank of thread slightly, and in so doing locks itself in position. This construction efficiently compensates all expansions in the diameter of the wire (temperature fluctuations).

This has the following advantages:
of course the terminals age when in use; nevertheless, the terminal point does not yield. Consequently, it is not necessary to retighten the terminal screw at a later date nor does the wire become loose: it is resistant to vibration.

The voltage drop remains consistently low.
Weidmüller's technology is completely maintenance free.

Separating the electrical and mechanical functions means that we use steel for a high contact force, and the good electrical conducting properties of copper for a low voltage drop.



Legend

PS	Test plug
STB	Test socket screw
TSch	Small partition
BS	Fixing screw
QL	Cross-connection link
VH Q	Connection sleeve
EW 35	End brackets
TS 35	Mounting rail
VL	Connection link
BSK	Fixing screw
AD 4	Cover
DEK	Markers
AP	End plate
TW	Partition

The construction of the clamping yoke has been designed in such a manner to ensure that the connection between the wire and the busbar is gas-tight. The surface of the connection must make up at least 75 % of the surface as a whole. Electricity is conducted with 100 % efficiency at these points, because increased resistances due to soiling of the connection points do not arise. The SAK family is designed for wire cross-sections from 0.08 mm² to 240 mm².

A rundown on the SAK:

- PA 6.6, KrG
Two different materials that can be used, depending on the application, at 100 °C or 130 °C.
- Three different types of clip-on foot for mounting rail designs 32, 35 or a combination of both.
- Maintenance free and vibration-resistant There is no need to check the terminal point, because the patented clamping yoke construction ensures that the screws remain captive in the terminal.

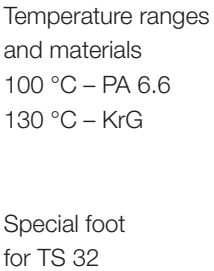
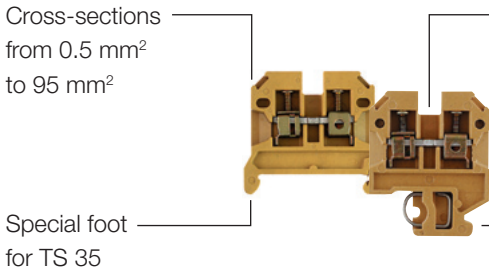
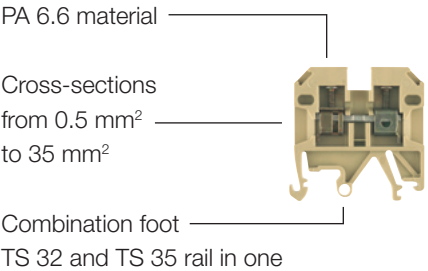
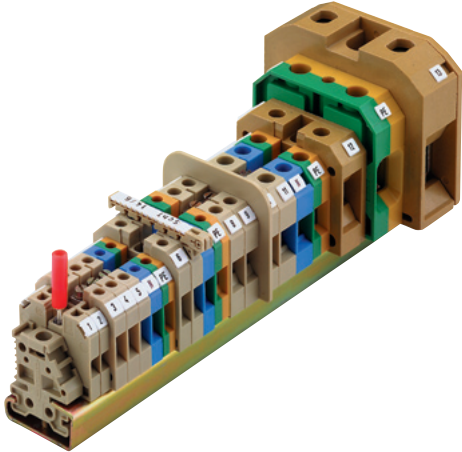
Separating the tasks completed by the components offers the following advantages:

- Low voltage drop and gas-tight enclosed (electrical components).
Perfect busbars in combination with a special surface treatment in conjunction with a high interference-fit at the terminal point.
- High contact forces, not reliant on the cross-section (mechanical components).
The clamping yoke is made of casehardened steel that, due to its design, can compensate any dimensional instability of the electrical wire.

SAK-Series

The advantages of all SAK modular terminals:

- Separation of electrical and mechanical functions:
 - steel clamping yoke for the mechanical function
 - copper busbar for the electrical function
- Maintenance-free and vibration-proof screw connection
- Low voltage drop and gas-tight contact point
- High contact forces, not reliant on the cross-section
- Three different clip-on foot designs available
- Various insulation materials
- Large selection of special terminals with diverse connection systems
- Large range of accessories available



Product range

Clamp type	Rated cross-section						Flat blade connection	Push-on connection	Spring connection	Solder connection
	2.5 mm ²	4 mm ²	6 mm ²	10 mm ²	16 mm ²	35 mm ²				
Modular feed-through terminals										
PA 6.6 / TS 32	•	•	•	•	•	•		•	•	•
KrG / TS 32	•	•	•	•	•	•	•	•	•	•
PA 6.6 / TS 35	•	•	•	•	•	•		•	•	•
KrG / TS 35	•	•	•	•	•	•	•			
PA 6.6 / comb. foot	•	•	•	•	•	•				
PA 6.6 / TS 15	•	•						•		•
Modular 2-tier terminals		•								
Modular PE terminals										
PA 6.6 / TS 32	•	•		•	•	•				
PA 6.6 / TS 35	•	•	•	•	•	•				
PA 6.6 / TS 15	•	•								
Modular fuse terminals										
PA 6.6 / TS 32				•						
PA 6.6 / TS 35				•						
KrG / TS 32				•	•					
KrG / TS 35				•	•					
PA 6.6 / TS 15		•								
PA 6.6 / comb. foot		•								
Modular 2-tier fuse terminals										
PA 6.6 / TS 32		•								
PA 6.6 / TS 35		•								
PA 6.6 / comb. foot		•								
Modular disconnect terminals										
TS 35		•		•						
PA 6.6 / TS 15		•								
Modular 2-tier disconnect terminals		•						•		
Modular ceramic terminals		•		•						

SAK-Series TS 35

SAK-Series TS 35	
Feed-through modular terminals	
TS 35 / PA	A.2
TS 35 / KrG	A.7
Terminals with spring-loaded cable clamps	
TS 35 / PA	A.11
Two-tier modular terminals	
TS 35 / PA	A.12
Modular PE terminals	
TS 35 / PA	A.14
Disconnect terminals	
TS 35 / PA	A.18
TS 35 / KrG	A.20
Fuse terminals	
TS 35 / PA	A.22
TS 35 / KrG	A.24
Fuse inserts and gauge rings for Weidmüller fuse terminals	A.28
Installation terminals	
TS 35 / PA	A.30
Test-disconnect terminals	
TS 35 / KrG	A.32
Terminals for temperature measuring circuits	
TS 35 / PA	A.34
Terminals with screw-less connections	
With tab connection TS 35 / PA	A.36
With solder connection TS 35 / PA	A.40
Special terminals – SAKG	
TS 35 / KrG	A.42
Stud Terminal – KST	
TS 35 / PA	A.48
Terminals with electronic components	
TS 35 / PA	A.50
Earth conductor isolating terminals	A.57

Feed-through modular terminals

TS 35 / PA

Width/Length/height with TS35x7.5	mm
max. current / max. cond. cross-section	A/mm ²
Max. clamping range	mm ²


Technical data

Rated data	
Rated voltage	V
Rated current	A
Rated cross-section	mm ²
Rated impulse voltage / Pollution severity	kV/-
Gauge to IEC 60947-1 / UL94 Flammability class	
Approvals	
Clamped conductors (H05V/H07V)	
solid / stranded	mm ²
flexible / Stranded wire with end ferrules	mm ²
Tightening torque range (clamping screw)	
Stripping length / Blade size	mm/-
2 conductors with same cross-section (H05V/H07V)	
solid / stranded	mm ²
flexible / Stranded wire with end ferrules	mm ²
Note	

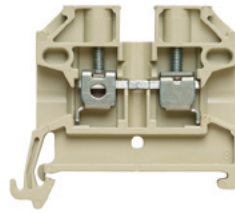
Ordering data

Version	
	beige
	Blue
Note	

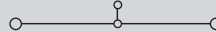
Accessories

Screwable cross-connection	
	2-pole
	3-pole
	4-pole
	10-pole
	Connecting sleeve
	Mounting screw
	Lock washer
Switchable link	
	Switchable link
	Connecting sleeve
	Mounting screw
Testing / Checking	
	Test plug
	Socket
End plate / Partition plate	
	beige
	Blue
	beige
	Blue
Small partition	
	Small partition
Cover / warning label	
	Cover / warning label
	Mounting screw (plastic)
Marking systems (see assortment in catalogue 7)	
	Marking tags
For detailed information on other accessories and applications, refer to the „Accessories“ section	

SAKD 2.5/35

2.5 mm²

5 x 44 x 38
30 / 4
0.33...4



IEC 60947-7-1

IEC	UL	CSA
500	300	300
24	20	20
2.5	AWG 22...12	AWG 22...12
6 / 3		
A2 / V2		



Rated connection

0.5...4 / 0.5...4
0.5...4 / 0.5...2.5
0.4...0.6 Nm (M 2.5)
10 / 0.6 x 3.5 mm

0.5...0.75	mm ²
0.5...0.75 / 0.5...0.75	mm ²

With twin ferrules ZH 0.5 to ZH 1.5, rated voltage is 690 V.

Type	Qty.	Order No.
SAKD 2.5/35	100	0268860000
SAKD 2.5/35 BL	100	0268880000

Type	current	Qty.	Order No.
Q 2 SAKD2.5N	24 A	50	0367800000
Q 3 SAKD2.5N	24 A	50	0367900000
Q 4 SAKD2.5N	24 A	50	0368000000
Q 10 SAKD2.5N	24 A	20	0368100000

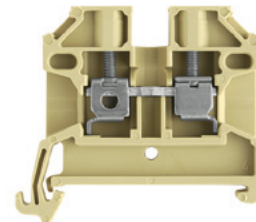
	Width		
PS 2.3 RT	5.4 mm	20	0180400000
STB 8.5/D4/2.3/M2.5 AKZ		50	0215700000

AP SAKD2.5N	1.5 mm	20	0150960000
AP SAKD2.5N BL	1.5 mm	20	0150980000
TW SAKD2.5N	1.5 mm	20	0191860000
TW SAKD2.5N BL	1.5 mm	20	0191880000

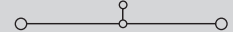
TSCH 3 SAKD2.5 N	5 mm	100	0366860000
------------------	------	-----	------------

DEK 5/5 / SCHT 7

SAK 2.5

2.5 mm²

6.1 x 44.5 x 40
41 / 6
0.13...6



IEC 60947-7-1

Ex ell  II 2 G D

IEC	UL	CSA	EN 60079-7
800	600	600	550
24	20	25	21
2.5	AWG 22...12	AWG 26...10	2.5
8 / 3			
A3 / V2			



KEMA 97ATEX1798 U

Rated connection

0.5...6 / 0.5...4
0.5...4 / 0.5...4
0.4...0.6 Nm (M 2.5)
10 / 0.6 x 3.5 mm

0.5...0.75	mm ²
0.5...0.75 / 0.5...0.75	mm ²

With twin ferrules ZH 0.5 to ZH 1.5, rated voltage is 690 V.

Type	Qty.	Order No.
SAK 2.5/35	100	0380460000
SAK 2.5/35 BL	100	0380480000

Type	current	Qty.	Order No.
Q 2 SAK2.5	41 A	50	0337000000
Q 3 SAK2.5	41 A	50	0337100000
Q 4 SAK2.5	41 A	50	0337200000
Q 10 SAK2.5	41 A	20	0368700000

	Width		
PS 2.3 RT	5.4 mm	20	0180400000
STB 8.5/5/2.3/M3 SAK2.5		50	0280600000

AP SAK2.5	1.5 mm	20	0279560000
AP SAK2.5 BL	1.5 mm	20	0279580000
TW SAK2.5	2.5 mm	20	0302860000
TW SAK2.5 BL	1.5 mm	20	0302880000

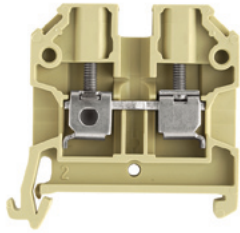
TSCH 1	2 mm	100	0319160000
--------	------	-----	------------

AD 3 SAK2.5		50	0297900000
BFSC M3x22 PA/RT		100	0128900000

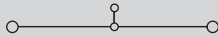
DEK 5/6 / SCHT 7

SAK 4

4 mm²



6.5 x 45 x 44
41 / 6
0.13...6



IEC 60947-7-1 Ex e II II 2 G D

IEC	UL	CSA	EN 60079-7
800	600	600	550
32	30	36	28
4	AWG 22...12	AWG 26...10	4
8 / 3			
A4 / V2			

KEMA 97ATEX1798 U

Rated connection

0.5...6 / 0.5...4
0.5...4 / 0.5...4
0.5...1.0 Nm (M 3)
12 / 0.6 x 3.5 mm

1.5...1.5
0.5...1.5

With twin ferrules ZH 0.5 to ZH 2.5, rated voltage is 690 V.

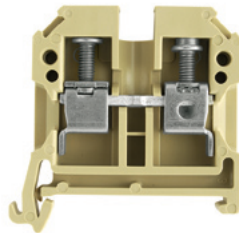
Type	Qty.	Order No.
SAK 4/35	100	0443660000
SAK 4/35 BL	100	0443680000

Type	current	Qty.	Order No.
Q 2 SAK4	41 A	50	0336700000
Q 3 SAK4	41 A	50	0336800000
Q 4 SAK4	41 A	50	0336900000
Q 10 SAK4	41 A	20	0368800000
VL 2 SAK4	32 A	50	0197000000
VH 19/5/3.5 SAK4-16	50		0285100000
BFSC M3X25	100		0292500000
Width			
PS 4 F.STB 4	7.6 mm	20	0299600000
STB 14/D5/2.3/M3 SAK2.5	50		0168600000
AP SAK4-10	1.5 mm	20	0117960000
AP SAK4-10 BL	1.5 mm	20	0117980000
TW 4 SAK4-10	1.5 mm	20	0130160000
TW 4 SAK4-10 BL	1.5 mm	20	0130180000
TSCH 1	2 mm	100	0319160000
AD 4 SAK4	50		0285300000
BFSC M3X22 PA/RT	100		0128900000

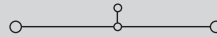
DEK 5/6.5 / SCHT 7

SAK 6

6 mm²



8 x 45 x 44
57 / 10
0.33...10



IEC 60947-7-1 Ex e II II 2 G D

IEC	UL	CSA	EN 60079-7
800	600	600	550
41	40	47	36
6	AWG 22...8	AWG 20...8	6
8 / 3			
A5 / V2			

KEMA 97ATEX1798 U

Rated connection

0.5...10 / 0.5...6
0.5...10 / 0.5...6
0.8...1.6 Nm (M 3.5)
12 / 4.0 x 0.8 mm

For AWG 8-7 and AWG 8-19, tightening torque is 1.21.4 Nm

Type	Qty.	Order No.
SAK 6/35 PA	100	0380560000
SAK 6/35 PA/BL	100	0380580000

With AWG 6 and H07V-R10 conductors, an increased MD torque of 1.4 to 1.6 Nm should be used.

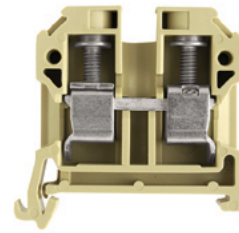
Type	current	Qty.	Order No.
Q 2 SAK6N	32 A	50	0456700000
Q 3 SAK6N	57 A	50	0456800000
Q 4 SAK6N	57 A	50	0456900000
Q 10 SAK6N	32 A	20	0457000000
VL 2 SAK6N/SAKT	32 A	50	0194700000
VH 19/5/3.5 SAK4-16	50		0285100000
BFSC M3X25	100		0292500000
Width			
PS 4 F.STB 4	7.6 mm	20	0299600000
STB 14/D6/4/M3 SAK10	50		0169900000
AP SAK4-10	1.5 mm	20	0117960000
AP SAK4-10 BL	1.5 mm	20	0117980000
TW 4 SAK4-10	1.5 mm	20	0130160000
TW 4 SAK4-10 BL	1.5 mm	20	0130180000
TSCH 1	2 mm	100	0319160000
AD 4 SAK6N	50		0196600000
BFSC M3X22 PA/RT	100		0128900000

DEK 5/8 / SCHT 7

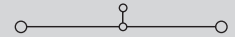
When used with twin ferrules ZH 0.5 - ZH 4, the rated voltage is 690 V.

SAK 10

10 mm²



10 x 45 x 51.5
76 / 16
1.5...16



IEC 60947-7-1 Ex e II II 2 G D

IEC	UL	CSA	EN 60079-7
800	600	600	550
57	60	65	50
10	AWG 14...6	AWG 16...6	10
8 / 3			
B6 / V2			

KEMA 97ATEX1798 U

Rated connection

1.5...10 / 1.5...16
1.5...16 / 1.5...10
2.0...4.0 Nm (M 4)
12 / 1.0 x 5.5 mm

When used with twin ferrules ZH 0.5 - ZH 4, the rated voltage is 690 V.

Type	Qty.	Order No.
SAK 10/35	100	0443760000
SAK 10/35 BL	100	0443780000

A higher torque of 2 to 2.4 Nm is necessary when using H07V-R16 and AWG 6 conductors.

Type	current	Qty.	Order No.
Q 2 SAK10	57 A	50	0457100000
Q 3 SAK10	57 A	50	0457200000
Q 4 SAK10	57 A	50	0457300000
Q 10 SAK10	57 A	20	0457400000
VL 2 SAK6/10/SAKB	32 A	50	0135900000
VH 19/5/3.5 SAK4-16	50		0285100000
BFSC M3X25	100		0292500000
Width			
PS 4 F.STB 4	7.6 mm	20	0299600000
STB 14/D6/4/M3 SAK10	50		0169900000
AP SAK4-10	1.5 mm	20	0117960000
AP SAK4-10 BL	1.5 mm	20	0117980000
TW 4 SAK4-10	1.5 mm	20	0130160000
TW 4 SAK4-10 BL	1.5 mm	20	0130180000
TSCH 1	2 mm	100	0319160000
AD 4 SAK10	50		0178600000
BFSC M3X22 PA/RT	100		0128900000

DEK 5/5

Feed-through modular terminals

TS 35 / PA

In hazardous area applications, the installation instructions and the rated data specifications for accessories given in the technical appendix must be followed.

Width/Length/height with TS35x7.5	mm
max. current / max. cond. cross-section	A/mm ²
Max. clamping range	mm ²

Technical data

Rated data	
Rated voltage	V
Rated current	A
Rated cross-section	mm ²
Rated impulse voltage / Pollution severity	kV/-
Gauge to IEC 60947-1 / UL94 Flammability class	
Approvals	
Clamped conductors (H05V/H07V)	
solid / stranded	mm ²
flexible / Stranded wire with end ferrules	mm ²
Tightening torque range (clamping screw)	
Stripping length / Blade size	mm/-
2 conductors with same cross-section (H05V/H07V)	
solid / stranded	mm ²
flexible / Stranded wire with end ferrules	mm ²
Note	

Ordering data

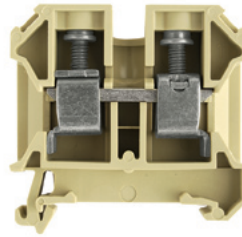
Version	
	beige
	Blue
Note	

Accessories

Screwable cross-connection	
	2-pole
	3-pole
	4-pole
	10-pole
	Connecting sleeve
	Mounting screw
	Lock washer
Switchable link	
	Switchable link
	Connecting sleeve
	Mounting screw
Testing / Checking	
	Test plug
	Socket
End plate / Partition plate	
	beige
	Blue
	beige
	Blue
Small partition	
	Small partition
Cover / warning label	
	Cover / warning label
	Mounting screw (plastic)
Marking systems	
	(see assortment in catalogue 7)
	Marking tags
For detailed information on other accessories and applications, refer to the „Accessories“ section	



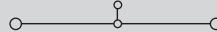
SAK 16

16 mm²

12 x 50 x 57.5

76 / 16

2.5...16

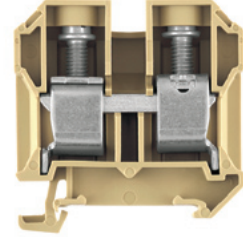


IEC 60947-7-1	UL	CSA	EN 60079-7
1000	600	600	690
76	80	87	66
16	AWG 12...4	AWG 14...6	16
8 / 3			
B6 / V2			
KEMA 97ATEX1798 U			
Rated connection			
2.5...16 / 4...16			
4...16 / 4...16			
2.0...4.0 Nm (M 4)			
15 / 1.0 x 5.5 mm			
Twin wire end ferrules ZH 2.5 - ZH 16 can be used.			

Type	Qty.	Order No.
SAK 16/35 PA	50	0380660000
SAK 16/35 PA/BL	50	0380680000
If QIs are aligned side by side, then a TW/AP must be used.		

Type	current	Qty.	Order No.
Q 2 SAK16	76 A	50	0457500000
Q 3 SAK16	76 A	50	0457600000
Q 4 SAK16	76 A	50	0457700000
Q 10 SAK16	76 A	20	0457800000
Width			
PS 4 F.STB 4	7.6 mm	20	0299600000
STB 14/D6/4/M3 SAK10	50	0169900000	
VL 2 SAK16/SAKA	57 A	50	0135800000
VH 19/5/3.5 SAK4-16	50	0285100000	
BFSC M3X25	100	0292500000	
Width			
AP SAK16	1.5 mm	20	0271160000
AP SAK16 BL	1.5 mm	20	0271180000
TSCH 1	2 mm	100	0319160000
AD 4 SAK16	50	0518200000	
BFSC M3X22 PA/RT	100	0128900000	
DEK 5/5			

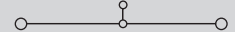
SAK 35/35

35 mm²

18 x 58 x 60

150 / 50

2.5...50



IEC 60947-7-1	UL	CSA	EN 60079-7
1000	600	600	550
125	105	145	109
35	AWG 12...2	AWG 12...2	35
8 / 3			
B8 / V2			
KEMA 97ATEX1798 U			
Rated connection			
2.5...16 / 4...50			
2.5...35 / 2.5...35			
4.0...5.0 Nm (M 6)			
18 / 6.5 x 1.2 mm			
2.5...10 / 10...16			
2.5...16 / 2.5...16			
The tightening torque is 4.5 Nm for 16 - 50 mm ² and AWG 6 - 2/7 stranded conductors. Twin wire end ferrules ZH 2.5 - ZH 16 can be used.			

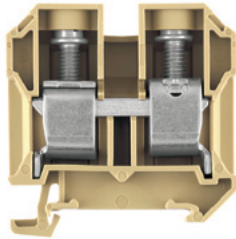
Type	Qty.	Order No.
SAK 35/35	20	0380760000
SAK 35/35 BL	20	0380780000
It is possible to use twin ferrules with identical rated voltages (LAB 13090).		

Type	current	Qty.	Order No.
QL 2 SAK35	110 A	20	0123600000
QL 3 SAK35	110 A	20	0123700000
QL 4 SAK35	110 A	20	0123800000
QL 10 SAK35	110 A	20	0338600000
VH 17/8/5 SAK35	50	0267000000	
BFSC M4X30	50	0267100000	
SS M4 D 128-A 4	100	0136400000	
Width			
VL 2 SAK35	50	0124000000	
VH 24.5/8/5 SAK35	50	0298700000	
BFSC M4X35	50	0298900000	
Width			
PS 4 F.STB 4	7.6 mm	20	0299600000
STB 16/D7/4/M4 SAK35	50	0140200000	
AP SAK35/TW SAK16	1.5 mm	10	0303660000
AP SAK35/TW SAK16 BL	1.5 mm	10	0303680000
TW SAK35	1.5 mm	20	0304360000
AD 4 SAK35	50	0178700000	
BFSC M4X32 PA/RT	100	0129100000	
DEK 5/5 / SCHT 7			
If QIs are aligned side by side, then a TW/AP must be used.			

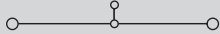
SAK 35/35/IK

35 mm²

Hexagon socket head screw



18 x 58 x 60
150 / 50
2.5...50



IEC 60947-7-1 Ex e II **Ex** II 2 G D

IEC	UL	CSA	EN 60079-7
1000	600	600	550
125	105	145	109
35	AWG 12...2	AWG 12...2	35
8 / 3			
B8 / V2			

Rated connection

2.5...16 / 4...50
2.5...35 / 2.5...35
4.0...6.0 Nm (M 6)
18 / S4 (DIN 6911)

2.5...10 / 10...16
2.5...16 / 2.5...16

The tightening torque is 4.5 Nm for 16 - 50 mm² and AWG 6 - 2/7 stranded conductors. Twin wire end ferrules ZH 2.5 - ZH 16 can be used.

Type	Qty.	Order No.
SAK 35/35/IK	20	0582460000

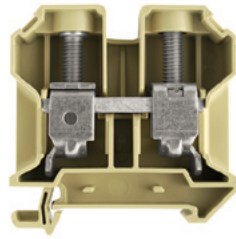
It is possible to use twin ferrules with identical rated voltages (LAB 13090).

Type	current	Qty.	Order No.
QL 2 SAK35	99 A	20	0123600000
QL 3 SAK35	99 A	20	0123700000
QL 4 SAK35	99 A	20	0123800000
QL 10 SAK35	99 A	20	0338600000
VH 17/8/5 SAK35	50	50	0267000000
BFSC M4X30	50	50	0267100000
SS M4 D 128-A 4	100	100	0136400000
Width			
PS 4 F.STB 4	7.6 mm	20	0299600000
STB 16/D7/4/M4 SAK35	50	50	0140200000
AP SAK35/TW SAK16	1.5 mm	10	0303660000
AP SAK35/TW SAK16 BL	1.5 mm	10	0303680000
TW SAK35	1.5 mm	20	0304360000
Width			
AD 4 SAK35	50	50	0178700000
BFSC M4X32 PA/RT	100	100	0129100000

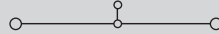
DEK 5/5
If QIs are aligned side by side, then a TW/AP must be used.

SAK 35N/35

35 mm²



16 x 58 x 60
150 / 50
2.5...50



IEC 60947-7-1

IEC	UL	CSA
1000	600	600
125	105	120
35	AWG 12...2	AWG 12...2
8 / 3		
B8 / V2		

Rated connection

2.5...16 / 4...50
2.5...35 / 1.5...35
4.0...5.0 Nm (M 6)
18 / 6.5 x 1.2 mm

2.5...10 / 10...16
2.5...16 / 2.5...16

The tightening torque is 4.5 Nm for 16 - 50 mm² and AWG 6 - 2/7 stranded conductors. Twin wire end ferrules ZH 2.5 - ZH 16 can be used.

Type	Qty.	Order No.
SAK 35N/35	20	0608260000

It is possible to use twin ferrules with identical rated voltages (LAB 13090).

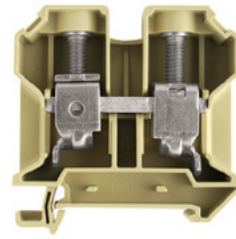
Type	current	Qty.	Order No.
QL 2 SAK35N	110 A	50	0564900000
QL 3 SAK35N	110 A	50	0565000000
QL 4 SAK35N	110 A	50	0565100000
QL 10 SAK35N	110 A	20	0565200000
VH 17/8/5 SAK35	50	50	0267000000
BFSC M4X30	50	50	0267100000
SS M4 D 128-A 4	100	100	0136400000
Width			
PS 4 F.STB 4	7.6 mm	20	0299600000
STB 16/D7/4/M4 SAK35	50	50	0140200000
AP SAK35/TW SAK16	1.5 mm	10	0303660000
AP SAK35/TW SAK16 BL	1.5 mm	10	0303680000
TW SAK35	1.5 mm	20	0304360000
Width			
AD 4 SAK35N	50	50	0576700000
BFSC M4X32 PA/RT	100	100	0129100000

DEK 5/5
If QIs are aligned side by side, then a TW/AP must be used.

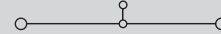
SAK 35N/35/IK

35 mm²

Hexagon socket head screw



16 x 58 x 60
150 / 50
2.5...50



IEC 60947-7-1

IEC	UL	CSA
1000	600	600
125	105	120
35	AWG 12...2	AWG 12...2
8 / 3		
B8 / V2		

Rated connection

2.5...16 / 4...50
2.5...35 / 1.5...35
4.0...6.0 Nm (M 6)
18 / S4 (DIN 6911)

2.5...10 / 10...16
2.5...16 / 2.5...16

The tightening torque is 4.5 Nm for 16 - 50 mm² and AWG 6 - 2/7 stranded conductors. Twin wire end ferrules ZH 2.5 - ZH 16 can be used.

Type	Qty.	Order No.
SAK 35N/35/IK	20	0608360000

It is possible to use twin ferrules with identical rated voltages (LAB 13090).

Type	current	Qty.	Order No.
QL 2 SAK35N	99 A	50	0564900000
QL 3 SAK35N	99 A	50	0565000000
QL 4 SAK35N	99 A	50	0565100000
QL 10 SAK35N	99 A	20	0565200000
VH 17/8/5 SAK35	50	50	0267000000
BFSC M4X30	50	50	0267100000
SS M4 D 128-A 4	100	100	0136400000
Width			
PS 4 F.STB 4	7.6 mm	20	0299600000
STB 16/D7/4/M4 SAK35	50	50	0140200000
AP SAK35/TW SAK16	1.5 mm	10	0303660000
AP SAK35/TW SAK16 BL	1.5 mm	10	0303680000
TW SAK35	1.5 mm	20	0304360000
Width			
AD 4 SAK35N	50	50	0576700000
BFSC M4X32 PA/RT	100	100	0129100000

DEK 5/5
If QIs are aligned side by side, then a TW/AP must be used.

Feed-through modular terminals

TS 35 / PA

Width/Length/height with TS35x7.5	mm
max. current / max. cond. cross-section	A/mm ²
Max. clamping range	mm ²


Technical data

Rated data	
Rated voltage	V
Rated current	A
Rated cross-section	mm ²
Rated impulse voltage / Pollution severity	kV/-
Gauge to IEC 60947-1 / UL94 Flammability class	
Approvals	
Clamped conductors (H05V/H07V)	
solid / stranded	mm ²
flexible / Stranded wire with end ferrules	mm ²
Tightening torque range (clamping screw)	
Stripping length / Blade size	mm/-
2 conductors with same cross-section (H05V/H07V)	
solid / stranded	mm ²
flexible / Stranded wire with end ferrules	mm ²
Note	

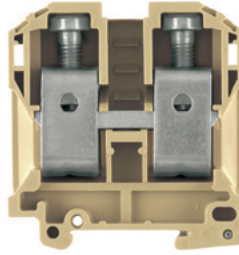
Ordering data

Version	
	beige
	Blue
Note	

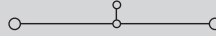
Accessories

Screwable cross-connection	
	2-pole
	3-pole
	4-pole
	10-pole
	Connecting sleeve
	Mounting screw
	Lock washer
Switchable link	
	Switchable link
	Connecting sleeve
	Mounting screw
Testing / Checking	
	Test plug
	Socket
End plate / Partition plate	
	beige
	Blue
	beige
	Blue
Small partition	
	Small partition
Cover / warning label	
	Cover / warning label
	Mounting screw (plastic)
Marking systems	
	(see assortment in catalogue 7)
	Marking tags
For detailed information on other accessories and applications, refer to the „Accessories“ section	

SAK 70/35

70 mm²

22 x 75 x 87
192 / 70
16...70



IEC 60947-7-1

IEC	UL	CSA
1000	600	600
192	150	150
70	AWG 4...2/0	AWG 4...2/0
	8 / 3	
	B11 / V2	

Rated connection

16...16 / 16...70
16...70 / 16...35
6.0...12 Nm (M 8)
24 / S6 (DIN 6911)

Tightening torque for 70 mm² stranded = 12 Nm.

Type	Qty.	Order No.
SAK 70/35	10	0139160000

Type	current	Qty.	Order No.
QL 2 SAK70	192 A	20	0345300000
QL 3 SAK70	192 A	5	0167000000
VH 30.5/11/5.5 SAK70		20	0345500000
BFSC M5X45		20	0345600000
SS M5 D 128-A 5		50	0346100000
Width			
PS 4 F.STB 4	7.6 mm	20	0299600000
STB 16/D7/4/M5 SAK70		50	0385400000
AP SAK70/35	2 mm	10	0340960000
AD 3 SAK70		10	0344300000
BFSC M5X45 PA/NA		50	0344400000
DEK 5/5			

TS 35 / KrG

In hazardous area applications, the installation instructions and the rated data specifications for accessories given in the technical appendix must be followed.

Width/Length/height with TS35x7.5	mm
max. current / max. cond. cross-section	A/mm ²
Max. clamping range	mm ²

Technical data

Rated data	
Rated voltage	V
Rated current	A
Rated cross-section	mm ²
Rated impulse voltage / Pollution severity	kV/-
Gauge to IEC 60947-1 / UL94 Flammability class	
Approvals	
Clamped conductors (H05V/H07V)	
solid / stranded	mm ²
flexible / Stranded wire with end ferrules	mm ²
Tightening torque range (clamping screw)	
Stripping length / Blade size	mm/-
Note	

Ordering data

Version	
	Medium yellow
	Blue
Note	

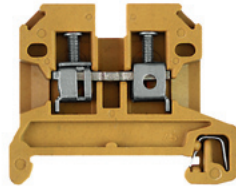
Accessories

Screwable cross-connection	
	2-pole
	3-pole
	4-pole
	10-pole
	Connecting sleeve
	Mounting screw
	Lock washer
Switchable link	
	Switchable link
	Connecting sleeve
	Mounting screw
Testing / Checking	
	Test plug
	Socket
End plate / Partition plate	
	Medium yellow
	Blue
	Medium yellow
	Blue
Small partition	
	Small partition
Cover / warning label	
	Cover / warning label
	Mounting screw (plastic)
Marking systems	
	(see assortment in catalogue 7)
	Marking tags
For detailed information on other accessories and applications, refer to the „Accessories“ section	



SAK 2.5

2.5 mm²



6.1 x 49.5 x 40
32 / 6
0.13...6

IEC 60947-7-1				Ex e ll II 2 G D			
IEC	UL	CSA	EN 60079-7	IEC	UL	CSA	EN 60079-7
800	600	600	550	800	600	600	550
24	20	25	21	32	30	36	28
2.5	AWG 22...12	AWG 26...10	2.5	4	AWG 22...12	AWG 26...10	4
				8 / 3			
				A3 / 5VA			
				KEMA 97ATEX1798 U			
Rated connection							
0.5...6 / 0.5...4							
0.5...4 / 0.5...2.5							
0.4...0.6 Nm (M 2.5)							
10 / 0.6 x 3.5 mm							
With twin ferrules ZH 0.5 to ZH 1.5, rated voltage is 690 V.							

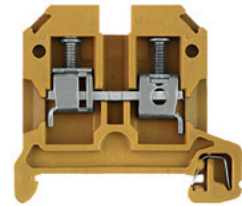
Type	Qty.	Order No.
SAK 2.5/35 KRG	100	0380420000
SAK 2.5/35 KRG/BL	100	0380470000

Type	current	Qty.	Order No.
Q 2 SAK2.5	41 A	50	0337000000
Q 3 SAK2.5	41 A	50	0337100000
Q 4 SAK2.5	41 A	50	0337200000
Q 10 SAK2.5	41 A	20	0368700000
Width			
PS 2.3 RT	5.4 mm	20	0180400000
STB 8.5/5/2.3/M3 SAK2.5		50	0280600000
AP SAK2.5 KRG	1.5 mm	20	0279520000
AP SAK2.5 KRG BL	1.5 mm	20	0279570000
TW SAK2.5 KRG	2.5 mm	20	0302820000
TW SAK2.5 KRG/BL	2.5 mm	20	0302870000
TSCH 1	2 mm	100	0319160000
AD 4 AKZ4		50	0303400000
BFSC M3X22 PA/RT		100	0128900000

DEK 5/6 / SCHT 7

SAK 4

4 mm²



6.5 x 45 x 44
41 / 6
0.13...6

IEC 60947-7-1				Ex e ll II 2 G D			
IEC	UL	CSA	EN 60079-7	IEC	UL	CSA	EN 60079-7
800	600	600	550	800	600	600	550
32	30	36	28	32	30	36	28
4	AWG 22...12	AWG 26...10	4	4	AWG 22...12	AWG 26...10	4
				8 / 3			
				A4 / 5VA			
				KEMA 97ATEX1798 U			
Rated connection							
0.5...6 / 0.5...4							
0.5...4 / 0.5...4							
0.5...1.0 Nm (M 3)							
12 / 0.6 x 3.5 mm							
With twin ferrules ZH 0.5 to ZH 2.5, rated voltage is 690 V.							

Type	Qty.	Order No.
SAK 4/35 KRG	100	0443620000
SAK 4/35 KRG/BL	100	0443670000

Type	current	Qty.	Order No.
Q 2 SAK4	41 A	50	0336700000
Q 3 SAK4	41 A	50	0336800000
Q 4 SAK4	41 A	50	0336900000
Q 10 SAK4	41 A	20	0368800000
VL 2 SAK4	32 A	50	0197000000
VH 19/5/3.5 SAK4-16		50	0285100000
BFSC M3X25		100	0292500000
Width			
PS 2.3 RT	5.4 mm	20	0180400000
STB 14/D5/2.3/M3 SAK2.5		50	0168600000
AP SAK4-10 KRG	1.5 mm	20	0117920000
AP SAK4-10 KRG/BL	1.5 mm	20	0117970000
TW SAK4-10 KRG	2.5 mm	20	0130120000
TW SAK4-10 KRG/BL	2.5 mm	20	0130170000
TSCH 1	2 mm	100	0319160000
AD 4 SAK4		50	0285300000
BFSC M3X22 PA/RT		100	0128900000

DEK 5/6,5 / SCHT 7

Feed-through modular terminals

TS 35 / KrG

In hazardous area applications, the installation instructions and the rated data specifications for accessories given in the technical appendix must be followed.

Width/Length/height with TS35x7.5	mm
max. current / max. cond. cross-section	A/mm ²
Max. clamping range	mm ²

Technical data

Rated data	
Rated voltage	V
Rated current	A
Rated cross-section	mm ²
Rated impulse voltage / Pollution severity	kV/-
Gauge to IEC 60947-1 / UL94 Flammability class	
Approvals	
Clamped conductors (H05V/H07V)	
solid / stranded	mm ²
flexible / Stranded wire with end ferrules	mm ²
Tightening torque range (clamping screw)	
Stripping length / Blade size	mm/-
Note	

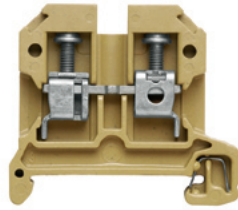
Ordering data

Version	
	Medium yellow
	Blue
Note	

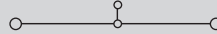
Accessories

Screwable cross-connection	
	2-pole
	3-pole
	4-pole
	10-pole
	Connecting sleeve
	Mounting screw
	Lock washer
Switchable link	
	Switchable link
	Connecting sleeve
	Mounting screw
Testing / Checking	
	Test plug
	Socket
End plate / Partition plate	
	Medium yellow
	Blue
	Medium yellow
	Blue
Small partition	
	Small partition
Cover / warning label	
	Cover / warning label
	Mounting screw (plastic)
Marking systems	(see assortment in catalogue 7)
	Marking tags
For detailed information on other accessories and applications, refer to the „Accessories“ section	

SAK 6

6 mm²

8 x 45 x 44
57 / 10
0.33...10



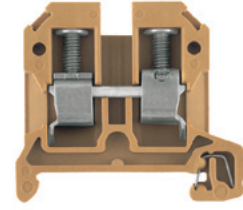
IEC 60947-7-1	Ex e ll			Ex ll	II 2 G D
IEC	UL	CSA	EN 60079-7		
800	600	600	550		
41	40	47	36		
6	AWG 22...8	AWG 20...8	6		
8 / 3					
A5 / 5VA					
KEMA 97ATEX1798 U					
Rated connection					
0.5...10 / 0.5...6					
0.5...10 / 0.5...6					
0.8...1.6 Nm (M 3.5)					
12 / 4.0 x 0.8 mm					
For AWG 8-7 and AWG 8-19, tightening torque is 1.21.4 Nm					

Type	Qty.	Order No.
SAK 6/35 KRG	100	0380520000
SAK 6/35 KRG/BL	100	0380570000
With AWG 6 and H07V-R10 conductors, an increased MD torque of 1.4 to 1.6 Nm should be used.		

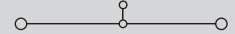
Type	current	Qty.	Order No.
Q 2 SAK6N	57 A	50	0456700000
Q 3 SAK6N	57 A	50	0456800000
Q 4 SAK6N	57 A	50	0456900000
Q 10 SAK6N	57 A	20	0457000000
Width			
PS 4 F.STB 4	7.6 mm	20	0299600000
STB 14/D6/4/M3 SAK10		50	0169900000
Width			
VL 2 SAK6N/SAKT		50	0194700000
VH 19/5/3.5 SAK4-16		50	0285100000
BFSC M3X25		100	0292500000
Width			
AP SAK4-10 KRG	1.5 mm	20	0117920000
AP SAK4-10 KRG/BL	1.5 mm	20	0117970000
TW SAK4-10 KRG	2.5 mm	20	0130120000
TW SAK4-10 KRG/BL	2.5 mm	20	0130170000
Width			
TSCH 1	2 mm	100	0319160000
Width			
AD 4 SAK6N		50	0196600000
BFSC M3X22 PA/RT		100	0128900000

DEK 5/8 / SCHAT 7
 When used with twin ferrules ZH 0.5 - ZH 4, the rated voltage is 690 V.

SAK 10

10 mm²

10 x 45 x 51.5
76 / 16
1.5...16



IEC 60947-7-1	Ex e ll			Ex ll	II 2 G D
IEC	UL	CSA	EN 60079-7		
800	600	600	550		
57	60	65	50		
10	AWG 14...6	AWG 16...6	10		
8 / 3					
B6 / 5VA					
KEMA 97ATEX1798 U					
Rated connection					
1.5...10 / 1.5...16					
1.5...16 / 1.5...10					
2.0...4.0 Nm (M 4)					
12 / 1.0 x 5.5 mm					
When used with twin ferrules ZH 0.5 - ZH 4, the rated voltage is 690 V.					

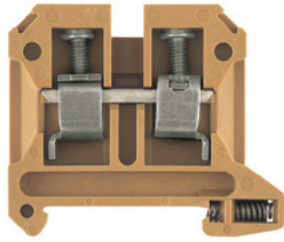
Type	Qty.	Order No.
SAK 10/35 KRG	100	0443720000
SAK 10/35 KRG/BL	100	0443770000
A higher torque of 2 to 2.4 Nm is necessary when using H07V-R16 and AWG 6 conductors.		

Type	current	Qty.	Order No.
Q 2 SAK10	57 A	50	0457100000
Q 3 SAK10	57 A	50	0457200000
Q 4 SAK10	57 A	50	0457300000
Q 10 SAK10	57 A	20	0457400000
Width			
PS 4 F.STB 4	7.6 mm	20	0299600000
STB 14/D6/4/M3 SAK10		50	0169900000
Width			
VL 2 SAK6/10/SAKB	32 A	50	0135900000
VH 19/5/3.5 SAK4-16		50	0285100000
BFSC M3X25		100	0292500000
Width			
AP SAK4-10 KRG	1.5 mm	20	0117920000
AP SAK4-10 KRG/BL	1.5 mm	20	0117970000
TW SAK4-10 KRG	2.5 mm	20	0130120000
TW SAK4-10 KRG/BL	2.5 mm	20	0130170000
Width			
TSCH 1	2 mm	100	0319160000
Width			
AD 4 SAK10		50	0178600000
BFSC M3X22 PA/RT		100	0128900000

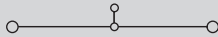
DEK 5/5

SAK 16

16 mm²



12 x 50 x 57.5
76 / 16
2.5...16



IEC 60947-7-1

Ex e II II 2 G D

IEC	UL	CSA	EN 60079-7
1000	600	600	690
76	80	87	66
16	AWG 12...4	AWG 14...6	16
8 / 3			
B6 / 5VA			

KEMA 97ATEX1798 U

Rated connection

2.5...16 / 4...16
 4...16 / 4...16
 2.0...4.0 Nm (M 4)
 15 / 1.0 x 5.5 mm

Twin wire end ferrules ZH 2.5 - ZH 16 can be used.

Type	Qty.	Order No.
SAK 16/35 KRG	50	0380620000

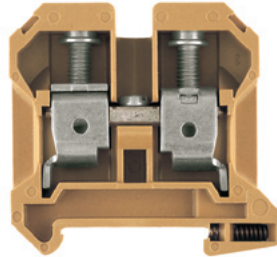
If QIs are aligned side by side, then a TW/AP must be used.

Type	current	Qty.	Order No.
Q 2 SAK16	76 A	50	0457500000
Q 3 SAK16	76 A	50	0457600000
Q 4 SAK16	76 A	50	0457700000
Q 10 SAK16	76 A	20	0457800000
Width			
VL 2 SAK16/SAKA	57 A	50	0135800000
VH 19/5/3.5 SAK4-16		50	0285100000
BFSC M3X25		100	0292500000
Width			
PS 4 F.STB 4	7.6 mm	20	0299600000
STB 14/D6/4/M3 SAK10		50	0169900000
AP SAK16 KRG	3 mm	20	0271120000
TW SAK16 KRG	3 mm	20	0281120000
Width			
TSCH 1	2 mm	100	0319160000
AD 4 SAK16		50	0518200000
BFSC M3X22 PA/RT		100	0128900000

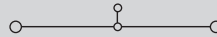
DEK 5/5

SAK 35N/35

35 mm²



16 x 58 x 60
125 / 50
2.5...50



IEC 60947-7-1

IEC	UL	CSA
1000	600	600
125	105	120
35	AWG 12...2	AWG 12...2
8 / 3		
B8 / 5VA		

Rated connection

2.5...16 / 4...50
 2.5...35 / 1.5...35
 4.0...5.0 Nm (M 6)
 18 / 6.5 x 1.2 mm

The tightening torque is 4.5 Nm for 16 - 50 mm² and AWG 6 - 2/7 stranded conductors. Twin wire end ferrules ZH 2.5 - ZH 16 can be used.

Type	Qty.	Order No.
SAK 35N/35 KRG	20	0608220000

It is possible to use twin ferrules with identical rated voltages (LAB 13090).

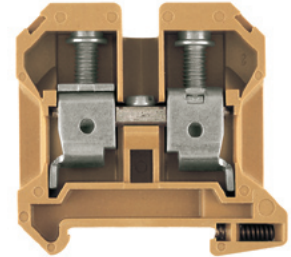
Type	current	Qty.	Order No.
QL 2 SAK35N	110 A	50	0564900000
QL 3 SAK35N	110 A	50	0565000000
QL 4 SAK35N	110 A	50	0565100000
QL 10 SAK35N	110 A	20	0565200000
VH 17/8/5 SAK35		50	0267000000
BFSC M4X30		50	0267100000
SS M4 D 128-A 4		100	0136400000
Width			
PS 4 F.STB 4	7.6 mm	20	0299600000
STB 16/D7/4/M4 SAK35		50	0140200000
AP SAK35 KRG	3 mm	10	0303620000
AP SAK35 KRG/BL	3 mm	10	0303670000
TW SAK35 KRG	3 mm	20	0304320000
Width			
AD 4 SAK35		50	0178700000
BFSC M3X22 PA/RT		100	0128900000

DEK 5/5

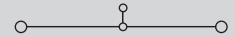
If QIs are aligned side by side, then a TW/AP must be used.

SAK 35N/35/IK

35 mm²



16 x 58 x 60
125 / 50
2.5...50



IEC 60947-7-1

IEC	UL	CSA
1000	600	600
125	105	120
35	AWG 12...2	AWG 12...2
8 / 3		
B8 / 5VA		

Rated connection

2.5...16 / 4...50
 2.5...35 / 1.5...35
 4.0...6.0 Nm (M 6)
 18 / S4 (DIN 6911)

The tightening torque is 4.5 Nm for 16 - 50 mm² and AWG 6 - 2/7 stranded conductors. Twin wire end ferrules ZH 2.5 - ZH 16 can be used.

Type	Qty.	Order No.
SAK 35N/35/IK KRG	20	0608320000
SAK 35N/35/IK KRG/BL	20	0608370000

It is possible to use twin ferrules with identical rated voltages (LAB 13090).

Type	current	Qty.	Order No.
QL 2 SAK35N	99 A	50	0564900000
QL 3 SAK35N	99 A	50	0565000000
QL 4 SAK35N	99 A	50	0565100000
QL 10 SAK35N	99 A	20	0565200000
VH 17/8/5 SAK35		50	0267000000
BFSC M4X30		50	0267100000
SS M4 D 128-A 4		100	0136400000
Width			
PS 4 F.STB 4	7.6 mm	20	0299600000
STB 16/D7/4/M4 SAK35		50	0140200000
AP SAK35 KRG	3 mm	10	0303620000
AP SAK35 KRG/BL	3 mm	10	0303670000
TW SAK35 KRG	3 mm	20	0304320000
Width			
AD 4 SAK35N		50	0576700000
BFSC M4X32 PA/RT		100	0129100000

DEK 5/5

If QIs are aligned side by side, then a TW/AP must be used.

Feed-through modular terminals

TS 35 / KrG

In hazardous area applications, the installation instructions and the rated data specifications for accessories given in the technical appendix must be followed.

Width/Length/height with TS35x7.5	mm
max. current / max. cond. cross-section	A/mm ²
Max. clamping range	mm ²

Technical data

Rated data

Rated voltage	V
Rated current	A
Rated cross-section	mm ²
Rated impulse voltage / Pollution severity	kV/-
Gauge to IEC 60947-1 / UL94 Flammability class	
Approvals	

Clamped conductors (H05V/H07V)

solid / stranded	mm ²
flexible / Stranded wire with end ferrules	mm ²
Tightening torque range (clamping screw)	
Stripping length / Blade size	mm/-

Note

Ordering data


Version

Medium yellow
Blue

Note

Accessories

Screwable cross-connection

	2-pole
	3-pole
	4-pole
	10-pole
	Connecting sleeve
Mounting screw	
Lock washer	

Switchable link

Switchable link
Connecting sleeve
Mounting screw

Testing / Checking

Test plug
Socket

End plate / Partition plate

Medium yellow
Blue
Medium yellow
Blue

Small partition

Small partition

Cover / warning label

Cover / warning label
Mounting screw (plastic)

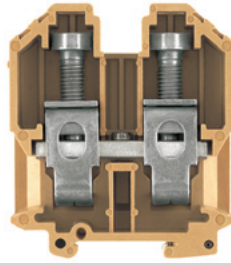
Marking systems

(see assortment in catalogue 7)

Marking tags

For detailed information on other accessories and applications, refer to the „Accessories“ section

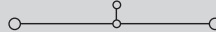
SAK 95/35

95 mm²

28 x 87.9 x 96.5

269 / 120

16...120



IEC 60947-7-1

IEC	UL	CSA
1000	600	600
232	190	200
95	AWG 6...4/0	AWG 6...4/0
8 / 3		
B12 / 5VA		



Rated connection

16...16 / 10...120
16...95 / 10...95
16...20 Nm (M 10)
30 / S8 (DIN 6911)

Ribbon cable (segmented ribbon) can be connected ranging from 3 to 6 segments of 0.8x9 mm, up to 6 segments of 0.8x16 mm and up to 6 segments of 0.5x13 mm.

Type	Qty.	Order No.
SAK 95/35 KRG	10	0662220000

Type	current	Qty.	Order No.
QL 2 SAKG28	125 A	10	0551200000
QL 3 SAKG28	232 A	5	0407600000
QL 4 SAKG28	125 A	5	0407700000
VH 35/11/5.5 SAK95		10	0551100000
KISC M5X50/26 SAK95		20	0630200000
SS M5 D 128-A 5		50	0346100000

	Width	Qty.	Order No.
PS 4 F.STB 4	7.6 mm	20	0299600000
STB 16/D7/4/M5 SAK70		50	0385400000

AP SAK95 KRG	3 mm	10	0550920000
AP SAK95 KRG/BL	3 mm	10	0550970000

ADP 3/HP3 1M	20	0485400000
BFSC M5X45 PA/NA	50	0344400000

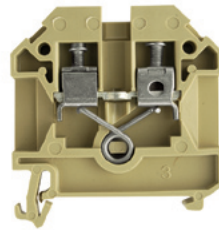
DEK 5/5 / SCHT 7

Holder HP 3 0485760000 for the ADP 3-Profil.

TS 35 / PA

RSF 3/35

4 mm²



In hazardous area applications, the installation instructions and the rated data specifications for accessories given in the technical appendix must be followed.

Width/Length/height with TS35x7.5	mm
max. current / max. cond. cross-section	A/mm ²
Max. clamping range	mm ²

8 x 50 x 60
32 / 4
0.33...4

Technical data

Rated data	
Rated voltage	V
Rated current	A
Rated cross-section	mm ²
Rated impulse voltage / Pollution severity	kV/-
Gauge to IEC 60947-1 / UL94 Flammability class	
Approvals	
Clamped conductors (H05V/H07V)	
solid / stranded	mm ²
flexible / Stranded wire with end ferrules	mm ²
Tightening torque range (clamping screw)	
Stripping length / Blade size	mm/-
Note	

IEC 60947-7-1

IEC	UL	CSA
690	600	600
32	20	25
4	AWG 22...12	AWG 22...12
	6 / 3	
	/ V2	

Rated connection	
0.5...4 / 0.5...4	
0.5...4 / 0.5...4	
0.5...1.0 Nm (M 3)	
12 / 0.6 x 3.5 mm	

Ordering data

Version	
	beige
Note	

Type	Qty.	Order No.
RSF 3/35	50	9501160000

Accessories

Screwable cross-connection	
	2-pole
	3-pole
	4-pole
	10-pole
	Connecting sleeve
	Mounting screw
	Lock washer
Switchable link	
	Switchable link
	Connecting sleeve
	Mounting screw
Testing / Checking	
	Test plug
	Socket
End plate / Partition plate	
	beige
	beige
Small partition	
	Small partition
Cover / warning label	
	Cover / warning label
Marking systems	
	(see assortment in catalogue 7)
	Marking tags
For detailed information on other accessories and applications, refer to the „Accessories“ section	

Type	current	Qty.	Order No.
QL 2 SAK6N	57 A	50	0194300000
QL 3 SAK6N	57 A	50	0194400000
QL 4 SAK6N	57 A	50	0194500000
QL 10 SAK6N	57 A	20	0338300000
VH 13.5/4.9/3.3 SAK4		100	0248500000
KISC M3X20.5/10 EK4		100	0303000000
SS M3 D 128-A 3		50	0164400000
Width			
PS 2.3 RT	5.4 mm	20	0180400000
STB 14/D5/2.3/M3 SAK2.5		50	0168600000
AP RSF3	3 mm	10	0270460000
TW AST1/PA HP/DBR/0.5	0.5 mm	20	0474700000
TSCH 1	2 mm	100	0319160000
ADP 2/HP2 1M		36	0485300000
DEK 5/5			

Two-tier modular terminals

TS 35 / PA

In hazardous area applications, the installation instructions and the rated data specifications for accessories given in the technical appendix must be followed.

Width/Length/height with TS35x7.5	mm
max. current / max. cond. cross-section	A/mm ²
Max. clamping range	mm ²


Technical data

Rated data	
Rated voltage	V
Rated current	A
Rated cross-section	mm ²
Rated impulse voltage / Pollution severity	kV/-
Gauge to IEC 60947-1 / UL94 Flammability class	
Approvals	
Clamped conductors (H05V/H07V)	
solid / stranded	mm ²
flexible / Stranded wire with end ferrules	mm ²
Tightening torque range (clamping screw)	
Stripping length / Blade size	mm/-
2 conductors with same cross-section (H05V/H07V)	
solid / stranded	mm ²
flexible / Stranded wire with end ferrules	mm ²
Note	

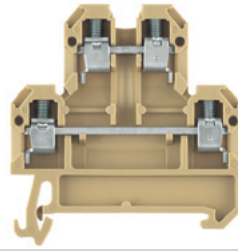
Ordering data


Version	
	beige
	Blue
Note	

Accessories

Screwable cross-connection	
	2-pole
	3-pole
	4-pole
	10-pole
Testing / Checking	
	Test plug
	Socket
End plate / Partition plate	
	beige
	Blue
	Dark beige Wemid
Small partition	
	Small partition
Cover / warning label	
	Cover / warning label
	Mounting screw (plastic)
Marking systems	
	(see assortment in catalogue 7)
	Marking tags
For detailed information on other accessories and applications, refer to the „Accessories“ section	

DK 4/35

4 mm²

6 x 50 x 60.5	
41 / 6	
0.13...6	

IEC 60947-7-1

IEC	UL	CSA
500	300	300
32	27	10
4	AWG 22...12	AWG 26...12
6 / 3		
A3 / V2		



Rated connection

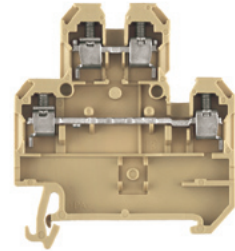
0.5...6 / 0.5...4
0.5...4 / 0.5...2.5
0.5...0.8 Nm (M 3)
8 / 0.6 x 3.5 mm
0.5...1.5
0.5...1.5 / 0.5...1.5
With twin ferrules ZH 0.5 to ZH 2.5, rated voltage is 690 V.

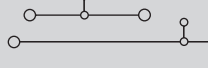
Type	Qty.	Order No.
DK 4/35	100	0527660000
DK 4/35 BL	100	0527680000

Type	current	Qty.	Order No.
Q 2 AKZ4	32 A	50	0336400000
Q 3 AKZ4	32 A	50	0336500000
Q 4 AKZ4	32 A	50	0336600000
Q 10 AKZ4	32 A	20	0368600000
Width			
PS 2.3 RT	5.4 mm	20	0180400000
STB 8.5/D4/2.3/M2.5 AKZ		50	0215700000
AP DK4	1.5 mm	20	0359260000
AP DK4 BL	1.5 mm	20	0359280000
WTW EN	3 mm	20	1058800000
TSCH 6 DK1 S4	5 mm	100	0190260000
AD 3 SAK2.5		50	0297900000
BFSC M2.5X18 PA/RT		100	0303300000

DEK 5/6

DK 4 Q/35

4 mm²

6 x 50 x 60.5	
41 / 6	
0.13...6	

IEC 60947-7-1

IEC	UL	CSA
500	300	300
32	27	10
4	AWG 22...12	AWG 26...12
6 / 3		
A3 / V2		



Rated connection

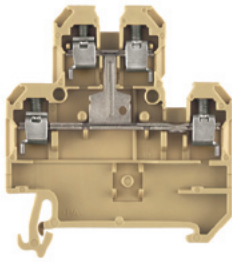
0.5...6 / 0.5...4
0.5...4 / 0.5...2.5
0.5...0.8 Nm (M 3)
8 / 0.6 x 3.5 mm
0.5...1.5
0.5...1.5 / 0.5...1.5
With twin ferrules ZH 0.5 to ZH 2.5, rated voltage is 690 V.

Type	Qty.	Order No.
DK 4Q/35	100	0590160000
DK 4Q/35 BL	100	0590180000

Type	current	Qty.	Order No.
Q 2 AKZ4	32 A	50	0336400000
Q 3 AKZ4	32 A	50	0336500000
Q 4 AKZ4	32 A	50	0336600000
Q 10 AKZ4	32 A	20	0368600000
Width			
PS 2.3 RT	5.4 mm	20	0180400000
STB 8.5/D4/2.3/M2.5 AKZ		50	0215700000
AP DK4Q	1.5 mm	20	1397160000
AP DK4Q BL	1.5 mm	20	1397180000
WTW EN	3 mm	20	1058800000
TSCH 6 DK1 S4	5 mm	100	0190260000
AD 3 SAK2.5		50	0297900000
BFSC M2.5X18 PA/RT		100	0303300000

DEK 5/6

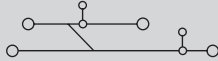
DK 4 QV/35

4 mm²

6 x 54 x 40.5

41 / 6

0.13...6



IEC 60947-7-1

IEC	UL	CSA
500	300	300
32	27	10
4	AWG 22...12	AWG 26...12
	6 / 3	
	A3 / V2	

Rated connection

0.5...6 / 0.5...4

0.5...4 / 0.5...2.5

0.5...0.8 Nm (M 3)

8 / 0.6 x 3.5 mm

0.5...1.5

0.5...1.5 / 0.5...1.5

With twin ferrules ZH 0.5 to ZH 2.5, rated voltage is 690 V.

Type	Qty.	Order No.
DK 4QV/35	100	0363660000
DK 4QV/35 BL	100	0363680000

Type	current	Qty.	Order No.
Q 2 AKZ4	32 A	50	0336400000
Q 3 AKZ4	32 A	50	0336500000
Q 4 AKZ4	32 A	50	0336600000
Q 10 AKZ4	32 A	20	0368600000
Width			
PS 2.3 RT	5.4 mm	20	0180400000
STB 8.5/D4/2.3/M2.5 AKZ		50	0215700000
AP DK4Q	1.5 mm	20	1397160000
AP DK4Q BL	1.5 mm	20	1397180000
WTW EN	3 mm	20	1058800000
TSCH 6 DKI S4	5 mm	100	0190260000
AD 4 AKZ4		50	0303400000
BFSC M2.5X18 PA/RT		100	0303300000

DEK 5/6

Modular PE terminals

TS 35 / PA

Width/Length/height with TS35x7.5 mm
 max. current / max. cond. cross-section A/mm²
 Max. clamping range mm²

Technical data

Rated data	
Rated cross-section	mm ²
Rated voltage to adjacent terminal	V
Rated impulse withstand voltage to adjacent terminal	kV
Short-time withstand current	
Pollution severity	
Gauge to IEC 60947-1 / UL94 Flammability class	
Approvals	
Clamped conductors (H05V/H07V)	
solid / stranded	mm ²
flexible / Stranded wire with end ferrules	mm ²
Tightening torque range (clamping screw)	
Tightening torque range (fixing screw)	
Stripping length / Blade size	mm/-

Note

Ordering data

Version
green/yellow
Note

Accessories

Rail support

Marking systems (see assortment in catalogue 7)
 Marking tags

For detailed information on other accessories and applications, refer to the „Accessories“ section

EK 2.5/35

2.5 mm²

6 x 56.5 x 40
 / 6
 0.33...6



IEC 60947-7-2

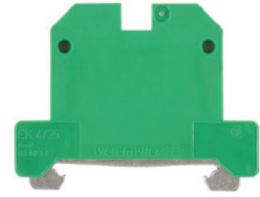
IEC	UL	CSA
2.5	AWG 22...12	AWG 26...10
800		
8		
	480 A (4 mm ²)	
	3	
	A3 / V2	



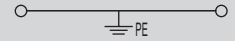
Rated connection

0.5...6 / 0.5...4
0.5...4 / 0.5...2.5
0.4...0.6 Nm (M 2.5)
0.4...0.6 Nm
10 / 0.6 x 3.5 mm

EK 4/35

4 mm²

6.5 x 56.5 x 44
 / 6
 0.33...6



IEC 60947-7-2

IEC	UL	CSA
4	AWG 22...12	AWG 26...10
800		
8		
	720 A (6 mm ²)	
	3	
	A4 / V2	



Rated connection

0.5...6 / 0.5...4
0.5...4 / 0.5...4
0.5...1.0 Nm (M 3)
0.5...1.0 Nm
12 / 0.6 x 3.5 mm

Type	Qty.	Order No.
EK 4/35	100	0661160000

Type	Qty.	Order No.
EK 2.5/35	100	0661060000

Type	Width	Qty.	Order No.
SH 2	40 mm	10	0494920000

Type	Width	Qty.	Order No.
SH 2	40 mm	10	0494920000

DEK 5/6

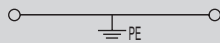
DEK 5/6,5

EK 6/35

6 mm²



8 x 56.5 x 44
/ 10
0.5...10



IEC 60947-7-2

IEC	UL	CSA
6	AWG 22...8	AWG 20...8
800		
8		
	720 A (6 mm ²)	
	3	
	A5 / V2	



Rated connection

0.5...10 / 1.5...6
0.5...10 / 0.5...6
0.8...1.6 Nm (M 3.5)
0.5...1.0 Nm
12 / 4.0 x 0.8 mm

For AWG 8-7 and AWG 8-19, tightening torque is 1.21.4 Nm

Type	Qty.	Order No.
EK 6/35	100	0661260000

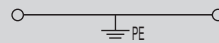
Type	Width	Qty.	Order No.
SH 2	40 mm	10	0494920000

EK 10

10 mm²



10 x 56 x 45
/ 10
0.5...10



IEC 60947-7-2

IEC	UL	CSA
10	AWG 14...6	AWG 14...6
800		
8		
	1200 A (10 mm ²)	
	3	
	B6 / V2	



Rated connection

0.5...10 / 1.5...6
0.5...10 / 0.5...10
1.2...2.4 Nm (M 4)
0.5...1.0 Nm
12 / 1.0 x 5.5 mm

Type	Qty.	Order No.
EK 10/35	100	0661360000

Type	Width	Qty.	Order No.
SH 2	40 mm	10	0494920000

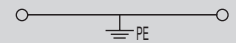
DEK 5/5

EK 16

16 mm²



12 x 56 x 50
/ 16
2.5...16



IEC 60947-7-2

IEC	UL	CSA
16	AWG 10...6	AWG 10...4
800		
8		
	1920 A (16 mm ²)	
	3	
	B6 / V2	



Rated connection

2.5...16 / 2.5...16
2.5...16 / 4...16
2.0...4.0 Nm (M 4)
0.5...1.0 Nm
16 / 1.0 x 5.5 mm

Type	Qty.	Order No.
EK 16/35	50	0190160000

Type	Width	Qty.	Order No.
SH 2	40 mm	10	0494920000

DEK 5/5

DEK 5/8

Modular PE terminals

TS 35 / PA

In hazardous area applications, the installation instructions and the rated data specifications for accessories given in the technical appendix must be followed.

Width/Length/height with TS35x7.5	mm
max. current / max. cond. cross-section	A/mm ²
Max. clamping range	mm ²

Technical data

Rated data	
Rated cross-section	mm ²
Rated voltage to adjacent terminal	V
Rated impulse withstand voltage to adjacent terminal	kV
Short-time withstand current	
Pollution severity	
Gauge to IEC 60947-1 / UL94 Flammability class	
Approvals	
Clamped conductors (H05V/H07V)	
solid / stranded	mm ²
flexible / Stranded wire with end ferrules	mm ²
Tightening torque range (clamping screw)	
Tightening torque range (fixing screw)	
Stripping length / Blade size	mm/-

Note

Ordering data

Version
green/yellow
Note

Accessories

Rail support

Marking systems (see assortment in catalogue 7)
Marking tags

For detailed information on other accessories and applications, refer to the „Accessories“ section

EK 35/35

35 mm²

16 x 58 x 60	
/ 50	
6...50	

IEC 60947-7-2

IEC	UL	CSA
35	AWG 6...2	AWG 12...2
800		
8		
	4200 A (35 mm ²)	
	3	
	B9 / V2	



Rated connection

6...16 / 16...50
10...35 / 10...35
4.0...6.0 Nm (M 6)
1.2...2.4 Nm
20 / 6.5 x 1.2 mm

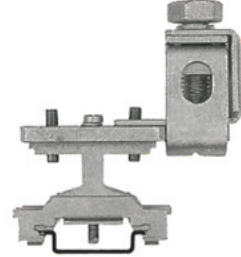
Use the TS 35x15/2.3 for 35 - 50 mm² conductors. For AWG 2/7 and H07V-R50, torque is 6 Nm.

Type	Qty.	Order No.
EK 35/35	20	0661460000

Type	Width	Qty.	Order No.
SH 2	40 mm	10	0494920000

DEK 5/5

EK 95/35

95 mm²

25 x 76.5 x 90.5	
/ 120	
10...120	

IEC 60947-7-2

IEC	UL	CSA
95		
8		
	11400 A (95 mm ²)	
	3	
	B12 / ---	

Rated connection

10...16 / 10...95
16...95 / 10...95
10...20 Nm (M 10)
1.2...2.4 Nm
27 /

Tightening torque for stranded conductors of 35 mm² and larger = 16 Nm

Type	Qty.	Order No.
EK 95/35/1ZB BK	10	0535300000

Type	Width	Qty.	Order No.
SH 2	40 mm	10	0494920000

To fix the terminals use the copper rail TS35 order no. 0270100000.

Disconnect terminals

TS 35 / PA

In hazardous area applications, the installation instructions and the rated data specifications for accessories given in the technical appendix must be followed.

Width/Length/height with TS35x7.5	mm
max. current / max. cond. cross-section	A/mm ²
Max. clamping range	mm ²

Technical data

Rated data

Rated voltage	V
Rated current	A
Rated cross-section	mm ²
Rated impulse voltage / Pollution severity	kV/-
Gauge to IEC 60947-1 / UL94 Flammability class	
Approvals	

Clamped conductors (H05V/H07V)

solid / stranded	mm ²
flexible / Stranded wire with end ferrules	mm ²
Tightening torque range (clamping screw)	
Stripping length / Blade size	mm/-

Note

Ordering data

Version

	beige
	Blue

Note

Accessories

External cross-connection

	2-pole
	3-pole
	4-pole

Testing / Checking

	Test plug
	Socket

End plate / Partition plate

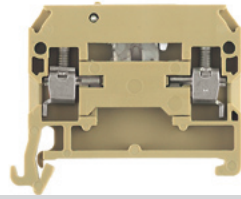
	beige
	Blue

Marking systems (see assortment in catalogue 7)

Marking tags

For detailed information on other accessories and applications, refer to the „Accessories“ section

SAKR

4 mm²

6.5 x 42 x 40.5

10 / 4

0.13...4



IEC 60947-7-1

IEC	UL	CSA
400	300	300
10	10	10
4	AWG 22...12	AWG 22...12
6 / 3		
A3 / V2		



Rated connection

0.5...4 / 1.5...4
0.5...4 / 0.5...2.5
0.5...1.0 Nm (M 3)
8 / 0.6 x 3.5 mm

Torque for SAKR with socket: 0.5 - 0.7 Nm.

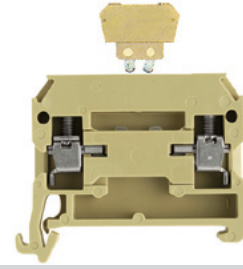
Type	Qty.	Order No.
SAKR/35	100	0172160000
SAKR/35 BL	100	0172180000
SAKR/35 2 StB order no. 0183360000		

Type	current	Qty.	Order No.
QB 2 WI RA6 IS	27 A	50	0482700000
QB 3 WI RA6 IS	27 A	50	0482800000
QB 4 WI RA6 IS	27 A	50	0482900000
Width			
PS 2.3 RT	5.4 mm	20	0180400000
STB 6/D3.7/2.3/M3 SAKR		100	0379400000
Width			
AP SAKR BE	1.5 mm	20	0211360000
AP SAKR BL	1.5 mm	20	0211380000

DEK 5/6.5

QB 25 blank, refer to „Accessories“ section. Note that max. conductor connection with QB = 2.5 mm². Twin wire-end ferrules ZH 0.5 - ZH 1.5

SAKR-D

4 mm²

6.5 x 46 x 38

10 / 4

0.13...4



IEC 60947-7-1

IEC	UL	CSA
250	300	300
10	10	10
4	AWG 26...12	AWG 22...12
6 / 3		
A3 / V2		



Rated connection

0.5...4 / 1.5...4
0.5...4 / 0.5...2.5
0.5...1.0 Nm (M 3)
8 / 0.6 x 3.5 mm

Tightening torque via the sockets is 0.5 - 0.7 Nm.

Type	Qty.	Order No.
SAKRD/35	50	0185760000

Type	current	Qty.	Order No.
QB 2 WI RA6 IS	27 A	50	0482700000
QB 3 WI RA6 IS	27 A	50	0482800000
QB 4 WI RA6 IS	27 A	50	0482900000
Width			
PS 2.3 RT	5.4 mm	20	0180400000
STB 6/D3.7/2.3/M3 SAKR		100	0379400000
Width			
AP SAKR BE	1.5 mm	20	0211360000
AP SAKR BL	1.5 mm	20	0211380000

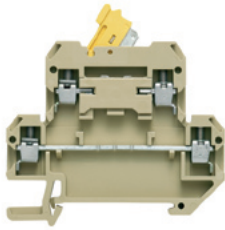
DEK 5/6.5

Twin wire-end ferrules ZH 0.5 - ZH 1.5 can be used.

DKT 4

4 mm²

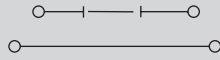
Without separated busbar



6 x 65 x 56.5

10 / 4

0.13...4



IEC 60947-7-1

IEC	UL	CSA
400		
10		
4		
	6 / 3	
	A3 / V2	



Rated connection

0.2...4 / 1.5...4

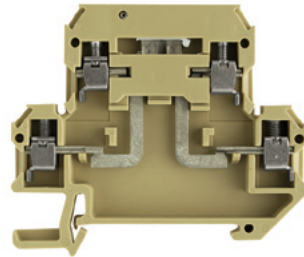
0.2...4 / 0.5...2.5

0.5...1.0 Nm (M 3)

9 / 0.6 x 3.5 mm

DKT 4 V

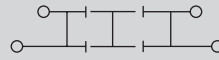
4 mm²



6 x 65 x 56.5

10 / 4

0.13...4



IEC 60947-7-1

IEC	UL	CSA
400		
10		
4		
	6 / 3	
	A3 / V2	



Rated connection

0.5...4 / 1.5...4

0.5...4 / 0.5...2.5

0.5...1.0 Nm (M 3)

9 / 0.6 x 3.5 mm

Type	Qty.	Order No.
DKT 4/35	100	0687460000
DKT 4/35 2 StB Order No. 0327960000		

Type	Qty.	Order No.
DKT 4V/35 2STB	100	1304960000

Type	current	Qty.	Order No.
QB 2 WI RA6 IS	27 A	50	0482700000
QB 3 WI RA6 IS	27 A	50	0482800000
QB 4 WI RA6 IS	27 A	50	0482900000
Width			
PS 2.3 RT	5.4 mm	20	0180400000
AP DKT4 PA			
	1.5 mm	20	0687560000

Type	current	Qty.	Order No.
QB 2 WI RA6 IS	27 A	50	0482700000
QB 3 WI RA6 IS	27 A	50	0482800000
QB 4 WI RA6 IS	27 A	50	0482900000
Width			
PS 2.3 RT	5.4 mm	20	0180400000
AP DKT4 PA			
	1.5 mm	20	0687560000

DEK 5/6

DEK 5/6