



Chipsmall Limited consists of a professional team with an average of over 10 year of expertise in the distribution of electronic components. Based in Hongkong, we have already established firm and mutual-benefit business relationships with customers from,Europe,America and south Asia,supplying obsolete and hard-to-find components to meet their specific needs.

With the principle of “Quality Parts,Customers Priority,Honest Operation,and Considerate Service”,our business mainly focus on the distribution of electronic components. Line cards we deal with include Microchip,ALPS,ROHM,Xilinx,Pulse,ON,Everlight and Freescale. Main products comprise IC,Modules,Potentiometer,IC Socket,Relay,Connector.Our parts cover such applications as commercial,industrial, and automotives areas.

We are looking forward to setting up business relationship with you and hope to provide you with the best service and solution. Let us make a better world for our industry!



## Contact us

Tel: +86-755-8981 8866 Fax: +86-755-8427 6832

Email & Skype: info@chipsmall.com Web: www.chipsmall.com

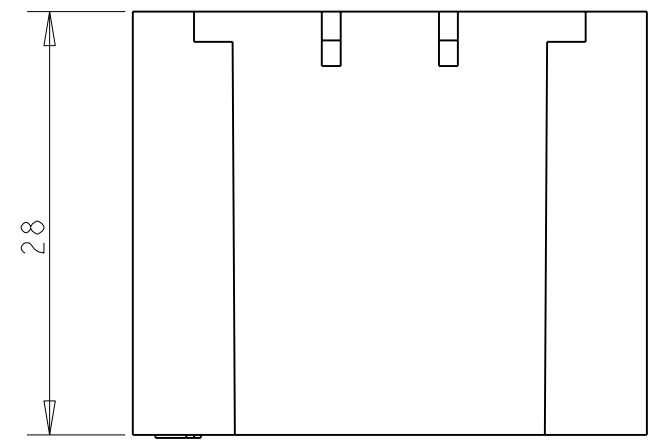
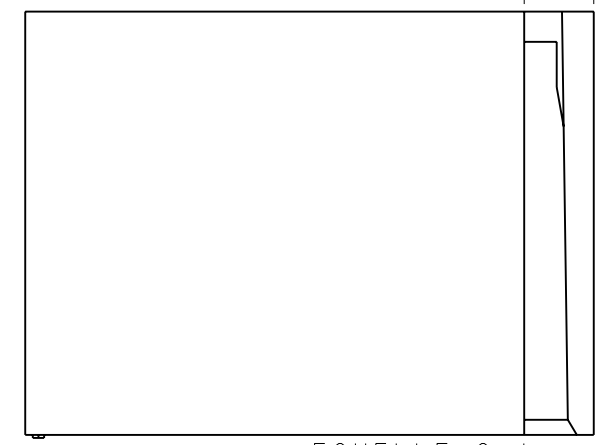
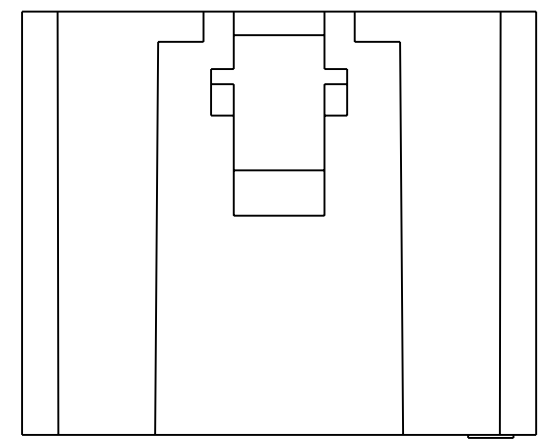
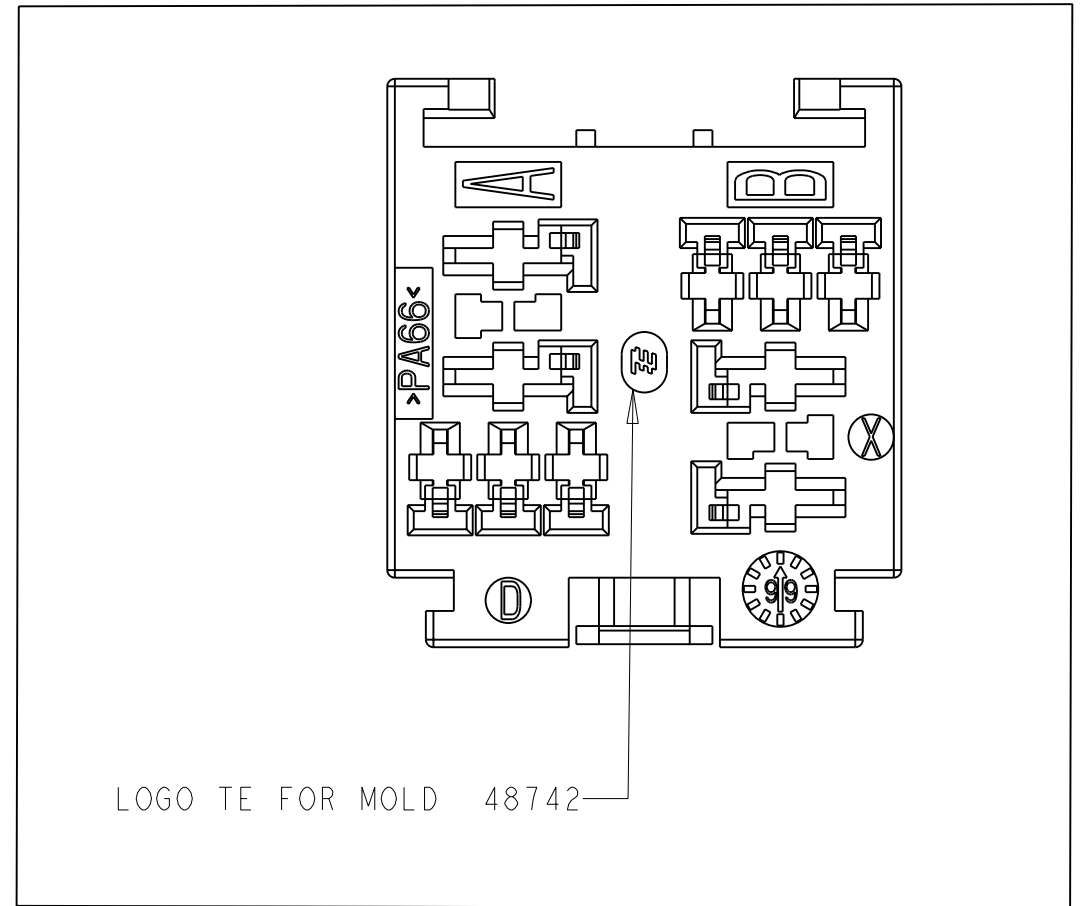
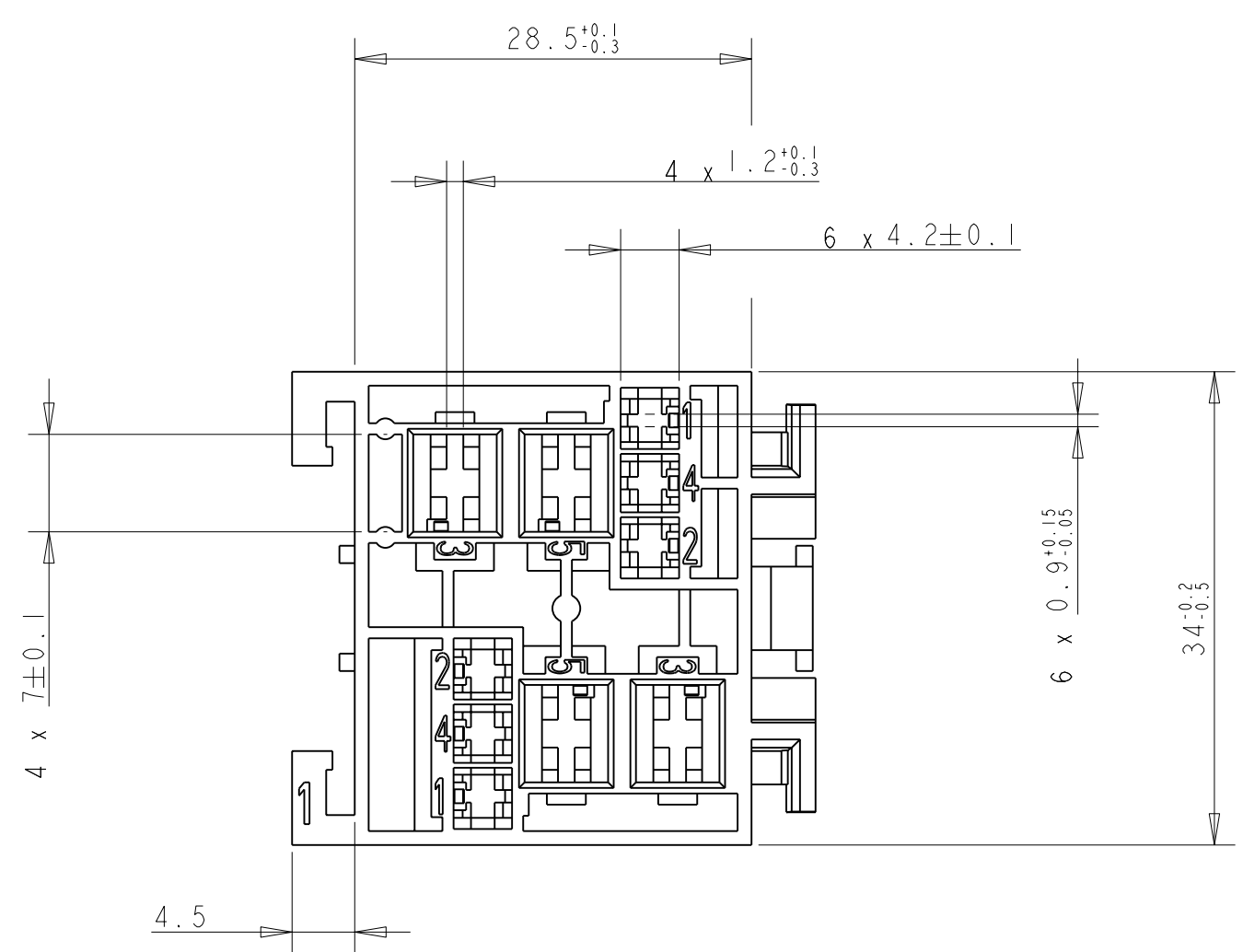
Address: A1208, Overseas Decoration Building, #122 Zhenhua RD., Futian, Shenzhen, China



THIS DRAWING IS UNPUBLISHED.  
 DIFFUSION RESTREINTE  
 © COPYRIGHT 20

RELEASED FOR PUBLICATION  
 LIBRE A LA DIFFUSION  
 ALL RIGHTS RESERVED.  
 TOUS DROITS RESERVES

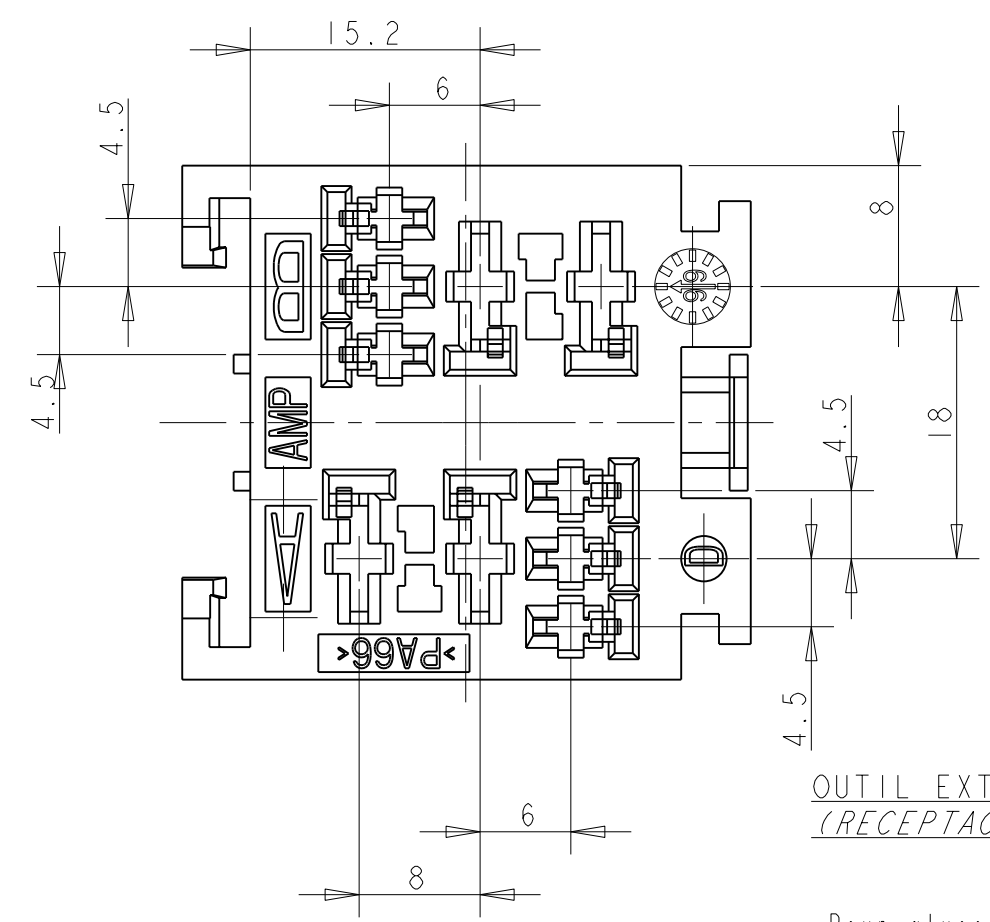
REVISIONS					
P	LTR	DESCRIPTION MODIFICATIONS	DATE	DWN DESS.	APVD APP.
A		VUE AVEC LOGO TE	04MAY2009	P.B	-
B		0.9+0.15-0.05 ETAIT 0.9+-0.05	06JUL2011	PB	JP P



**COMPOSANTS ASSOCIES  
 (APPLIED COMPONENTS)**

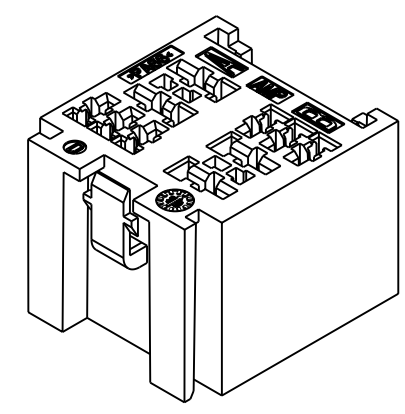
DESIGNATION (DESCRIPTION)	Ref TE (TE PN)
JPT 0.35-1mm <sup>2</sup>	144431-1
JPT 1-3mm <sup>2</sup>	144432-1
SPT 0.5-1mm <sup>2</sup>	927831-2
SPT 1-3mm <sup>2</sup>	144617-1
SPT 3-5mm <sup>2</sup>	144433-1
SPT 5-7mm <sup>2</sup>	144434-1

GRIS (GREY)	PA 6.6	185402-3
NOIR (BLACK)	PA 6.6	185402-2
CRISTAL (NATUREL) (CRYSTAL (NATURAL))	PA 6.6	185402-1
<b>COULEUR (COLOR)</b>	<b>MATIERE (MATERIAL)</b>	<b>REF TE (TE PN)</b>



**OUTIL EXTRACTEUR DE CLIPS:  
 (RECEPTACLE EXTRACTION TOOL)**

- Pour alveole Relais 2.8 Ref:951746-1  
(FOR RELAY CAVITY)
- Pour alveole Relais 6.35 Ref:951745-1  
(FOR RELAY CAVITY)



REFERENCE REPRESENTEE: 185402-1

THIS DRAWING IS A CONTROLLED DOCUMENT. <small>CE PLAN EST UN DOCUMENT CONTROLE PAR TYCO ELECTRONICS. IL EST SUSCEPTIBLE D'ETRE REVISE. CONTACTER LE SERVICE TECHNIQUE DE TYCO ELECTRONICS POUR OBTENIR LA DERNIERE REVISION.</small>		DWN /DESSINE R. PATIN 31MAR2004	TE Connectivity	
DIMENSIONS: mm		CHK /VERIFIE JP. PICAUD 31MAR2004		
TOLERANCES UNLESS OTHERWISE SPECIFIED: TOLERANCES NON SPECIFIEES (SUIV NB DE DECIMALES) 0 PLC/DEC: ± 1 PLC/DEC: ±0.2 2 PLC/DEC: ± 3 PLC/DEC: ± 4 PLC/DEC: ± ANGLES ±5°		APVD /APROUVE J. DAHER 31MAR2004	NAME /TITRE MODULE UNITAIRE 2 MICRO-RELAIS	
MATERIAL/MATIERE VOIR TABLE		PRODUCT SPEC SPEC. PRODUIT 108-15131	SIZE /FORMAT A2	
FINISH/FINITION VOIR TABLE		APPLICATION SPEC SPEC. APPLICATION 411-15551	CAGE CODE 00779	
		WEIGHT MASSE APPROX. 16g	DRAWING NO No PLAN C-185402	
		CUSTOMER DRAWING /PLAN CLIENT	RESTRICTED TO RESERVE A -	
		UNIQUEMENT POUR REFERENCE	SHEET /FEUILLE 1 OF /DE 1 REV B	