



Chipsmall Limited consists of a professional team with an average of over 10 year of expertise in the distribution of electronic components. Based in Hongkong, we have already established firm and mutual-benefit business relationships with customers from,Europe,America and south Asia,supplying obsolete and hard-to-find components to meet their specific needs.

With the principle of “Quality Parts,Customers Priority,Honest Operation,and Considerate Service”,our business mainly focus on the distribution of electronic components. Line cards we deal with include Microchip,ALPS,ROHM,Xilinx,Pulse,ON,Everlight and Freescale. Main products comprise IC,Modules,Potentiometer,IC Socket,Relay,Connector.Our parts cover such applications as commercial,industrial, and automotives areas.

We are looking forward to setting up business relationship with you and hope to provide you with the best service and solution. Let us make a better world for our industry!



## Contact us

Tel: +86-755-8981 8866 Fax: +86-755-8427 6832

Email & Skype: info@chipsmall.com Web: www.chipsmall.com

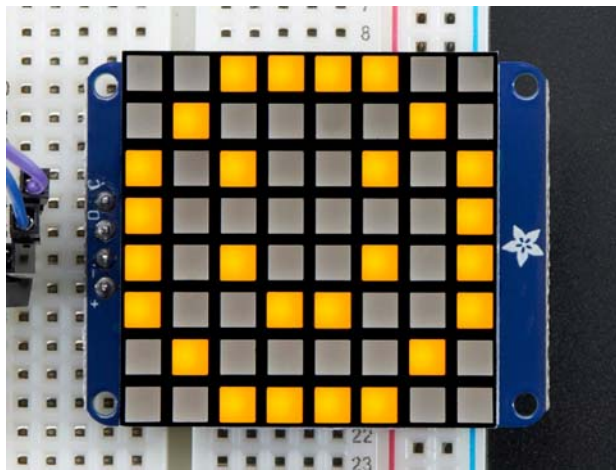
Address: A1208, Overseas Decoration Building, #122 Zhenhua RD., Futian, Shenzhen, China





# Small 1.2" 8x8 Ultra Bright Square Yellow LED Matrix + Backpack

PRODUCT ID: 1855



## Description

What's better than a single LED? Lots of LEDs! Matrices like these are 'multiplexed' - so to control 64 LEDs you need 16 pins. That's a lot of pins, and there are driver chips like the MAX7219 that can control a matrix for you but there's a lot of wiring to set up and they take up a ton of space. Here at Adafruit we feel your pain! After all, wouldn't it be awesome if you could control a matrix without tons of wiring? That's where these lovely LED matrix backpacks come in. We have them in three flavors - a mini 0.7" 8x8, a small 1.2" 8x8 and a 4-digit 0.56" 7-segment. They work perfectly with the matrices we stock in the Adafruit shop and make adding a bright little display trivial.

The matrices use a driver chip that does all the heavy lifting for you: They have a built in clock so they multiplex the display. They use constant-current drivers for ultra-bright, consistent color, 1/16 step display dimming, all via a simple I2C interface. These 1.2" matrix backpacks come with three address-selection jumpers so you can connect up to eight 1.2" 8x8's together (or a combination, such as four 1.2" 8x8's and four 7-segments, etc) on a single I2C bus.

The product kit comes with:

- A fully tested and assembled 1.2" LED backpack
- 1.2" 8x8 matrix square pixel yellow
- 4-pin header

A bit of soldering is required to attach the matrix onto the backpack but its very easy to do and only takes about 5 minutes.

Of course, in classic Adafruit fashion, we also have a detailed tutorial showing you how to solder, wire and control the display. We even wrote a very nice library for the backpacks so you can get running in under half an hour, displaying images on the matrix or numbers on the 7-segment. If you've been eying matrix displays but hesitated because of the complexity, this is the solution you've been looking for!

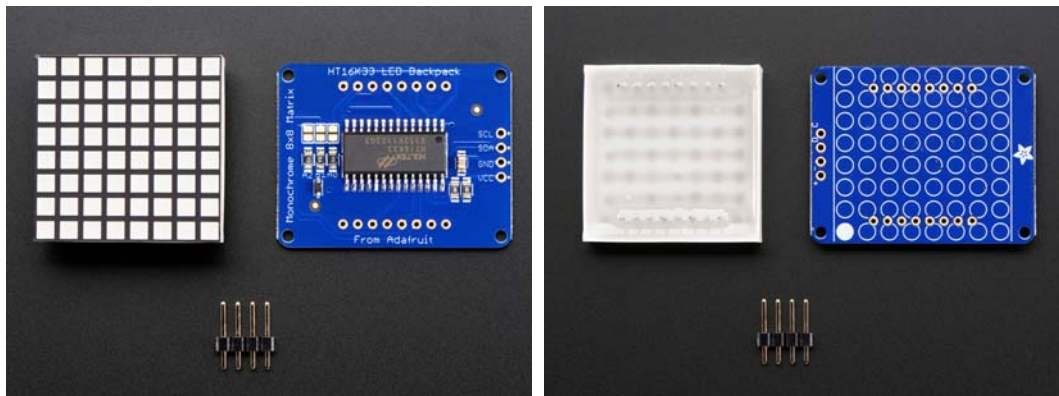
## • Technical Details

Matrix Dimensions:

- 31mm x 31mm x 7mm / 1.2" x 1.2" x 0.3"
- Height without Pins: 7mm / 0.3"
- Weight: 7.65g

Backpack Dimensions:

- 41mm x 33mm x 2mm / 1.6" x 1.3" x 0.08"
- Weight: 5.2g



<https://www.adafruit.com/product/1855> 12-4-17