



Chipsmall Limited consists of a professional team with an average of over 10 year of expertise in the distribution of electronic components. Based in Hongkong, we have already established firm and mutual-benefit business relationships with customers from,Europe,America and south Asia,supplying obsolete and hard-to-find components to meet their specific needs.

With the principle of “Quality Parts,Customers Priority,Honest Operation,and Considerate Service”,our business mainly focus on the distribution of electronic components. Line cards we deal with include Microchip,ALPS,ROHM,Xilinx,Pulse,ON,Everlight and Freescale. Main products comprise IC,Modules,Potentiometer,IC Socket,Relay,Connector.Our parts cover such applications as commercial,industrial, and automotives areas.

We are looking forward to setting up business relationship with you and hope to provide you with the best service and solution. Let us make a better world for our industry!



Contact us

Tel: +86-755-8981 8866 Fax: +86-755-8427 6832

Email & Skype: info@chipsmall.com Web: www.chipsmall.com

Address: A1208, Overseas Decoration Building, #122 Zhenhua RD., Futian, Shenzhen, China

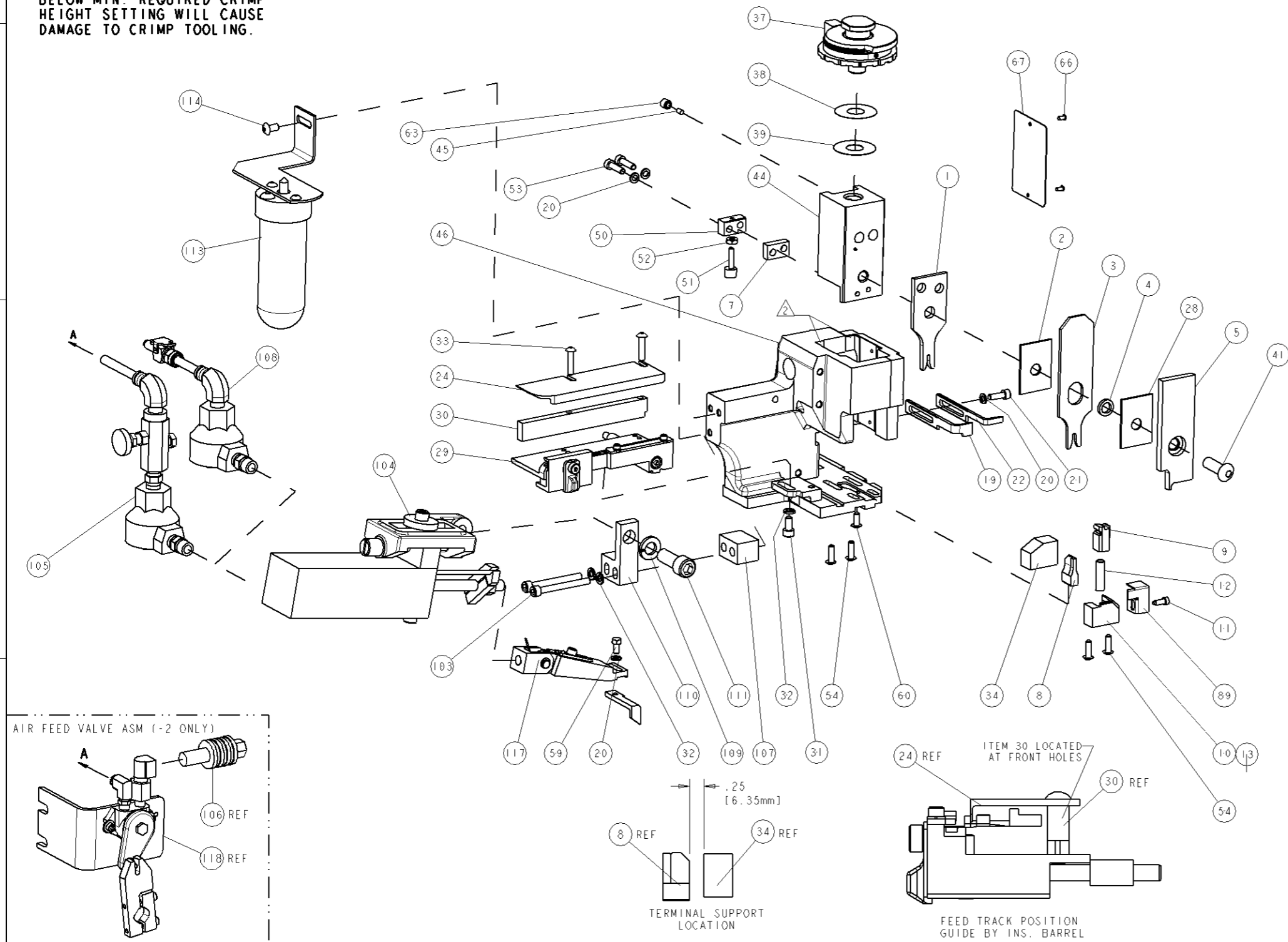


PART NUMBER	REV	FIRST USED	POWER UNIT	FEED TYPE	DESCRIPTION
1855321-1	B	122500-1	LEADMAKER	AIR FEED	CUTS CARRIER
1855321-2	B	565435-5	BENCH MODEL K	AIR FEED	CUTS CARRIER
1855321-3	B	354500-1	BENCH MODEL G	AIR FEED	CUTS CARRIER
1855321-6	B	122500-1	LEADMAKER	AIR FEED	CONTINUOUS CARRIER
7-1855321-7	B	-	-	-	SPARE PARTS

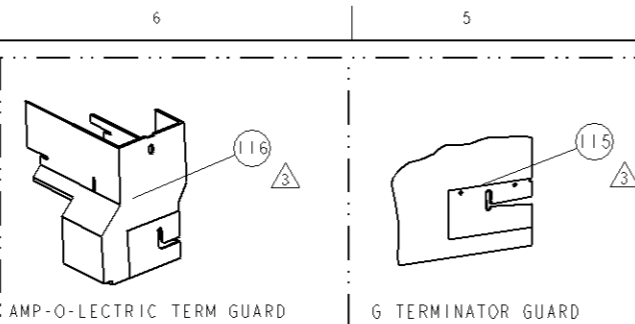
- △ RECOMMENDED SPARE PARTS
- △ GREASE LIGHTLY
- △ GUARD MUST BE IN PLACE WHEN OPERATING APPLICATOR IN A BENCH MACHINE

4. TERMINAL LUBRICANT IS RECOMMENDED.

*** WARNING**
ON INSTALLATION, SET WIRE DISC TO LARGEST WIRE SIZE SETTING. USE OF SETTINGS BELOW MIN. REQUIRED CRIMP HEIGHT SETTING WILL CAUSE DAMAGE TO CRIMP TOOLING.



AMP 4801 REV 31MAR2000



TERMINAL NAME: TERMINAL		LEARN TERMINAL - TE CRIMP SPECS		REF SETTING	
TE PN	MFG PN	CRIMP HEIGHT	WIRE SIZE		
1949010-1	361830-YF-200	1.68±0.05mm [0.066±.002]	18AWG	B8	
-	-	1.63±0.05mm [0.064±.002]	0.75mm ²	C2	
-	-	1.55±0.05mm [0.061±.002]	20AWG	C9	
-	-	1.53±0.05mm [0.060±.002]	0.5mm ²	D0	
		CRIMP	SIZE	TYPE	RANGE
-	-	WIRE	1.78mm [0.070]	F	18-20 AWG OR 0.50-0.75mm ²
-	-	INSUL	2.79mm [0.110]	F	∅ 2.08 MAX
WIRE STRIP LENGTH	TECH APPL SPEC	FEED	APPLICATOR INSTRUCTIONS		SET UP GAGE
4.67-5.05mm	NONE	24.05mm	408-8040		458637-1

REV	DATE	BY	CHKD	APPD
B2	15NOV2010	SZ	SX	

REV	DATE	BY	CHKD	APPD	DESCRIPTION	ITEM NO	
-	-	-	-	-	692655-6	AIR FEED VALVE ASSEMBLY	118
-	-	-	-	-	461062-1	FEED FINGER ASSEMBLY	117
-	-	-	-	-	455749-1	GUARD WINDOW	116
-	-	-	-	-	679532-1	INSERT, GUARD	115
-	-	-	-	-	2-21002-6	SCR, BTN SKT HD CAP 10-32 X .375	114
-	-	-	-	-	1-465184-0	LUBRICATOR ASSY	113
-	-	-	-	-	3-21001-5	SCR, SKT HD CAP 3/8-16 X 1.000	111
-	-	-	-	-	459610-9	MOUNT, FEED BRACKET	110
-	-	-	-	-	21024-8	WASHER, SPRG LOCK, REG 3/8	109
-	-	-	-	-	692655-7	AIR FEED VALVE ASSEMBLY	108
-	-	-	-	-	461690-4	SPACER, AIR FEED	107
-	-	-	-	-	24024-2	VALVE, SHUT OFF	106
-	-	-	-	-	692655-5	AIR FEED VALVE ASSEMBLY	105
-	-	-	-	-	461065-2	ASSEMBLY, AIR FEED	104
-	-	-	-	-	4-21000-2	SCR, SKT HD CAP 10-32 X 1.750	103
-	-	-	-	-	318563-1	GUARD, FRONT CHIP	89
-	-	-	-	-	4088040	SF APPL INST 408-8040	72
-	-	-	-	-	217238-1	GENERAL INSTRUCTION PKG	71
-	-	-	-	-	461264-5	PLATE, IDENTIFICATION	67
-	-	-	-	-	21017-2	SCREW, DRIVE	66
-	-	-	-	-	21009-2	SCR, SET, SELF LOCKING 1/4-20 X .250	63
-	-	-	-	-	22733-8	SCR, BHSC, SELF-LOCKING, 8-32 X .375	60
-	-	-	-	-	2-22603-0	SCR, HEX HD CAP 8-32 X .312	59
-	-	-	-	-	4-694433-9	FEED PAWL	56
-	-	-	-	-	2-21002-2	SCR, BTN SKT HD CAP 8-32 X .500	54
-	-	-	-	-	2-21000-8	SCR, SKT HD CAP 8-32 X .625	53
-	-	-	-	-	21018-5	NUT, HEX, REG 6-32	52
-	-	-	-	-	811242-2	BUMPER, HOLD DOWN	51
-	-	-	-	-	690753-1	SPACER, TONKER	50
-	-	-	-	-	1633399-1	APPL., BASIC AIR FEED SUB ASSY	46
-	-	-	-	-	690191-1	PLUG, NYLON	45
-	-	-	-	-	455673-1	RAM, SIDE FEED	44
-	-	-	-	-	7-21002-9	SCR, BTN SKT HD CAP 5/16-24 X 1.00	41
-	-	-	-	-	690125-1	SHIM SUB-ASSY	39
-	-	-	-	-	469367-2	SHIM	38
-	-	-	-	-	879103-3	FINE ADJUST HEAD ASSEMBLY	37
-	-	-	-	-	690786-6	TERMINAL SUPPORT	34
-	-	-	-	-	2-21002-4	SCR, BTN SKT HD CAP 8-32 X .750	33
-	-	-	-	-	21024-5	WASHER, SPRG LOCK, REG NO 10	32
-	-	-	-	-	3-21000-4	SCR, SKT HD CAP 10-32 X .375	31
-	-	-	-	-	1320908-3	SPACER, STRIP GUIDE	30
-	-	-	-	-	1633091-2	ASSEMBLY, STRIP GUIDE	29
-	-	-	-	-	1-455888-0	SPACER, CRIMPER	28
-	-	-	-	-	1320928-2	PLATE, STRIP GUIDE	24
-	-	-	-	-	690472-2	STRIPPER	22
-	-	-	-	-	2-21000-7	SCR, SKT HD CAP 8-32 X .500	21
-	-	-	-	-	21024-4	WASHER, SPRG LOCK, REG NO 8	20
-	-	-	-	-	691353-1	STRIPPER	19
-	-	-	-	-	679625-1	SHEAR HOLDER, FRONT (NO CUT)	13
-	-	-	-	-	3-22280-3	SPRING, COMPRESSION	12
-	-	-	-	-	690461-1	STOP, SHEAR	11
-	-	-	-	-	690459-1	SHEAR HOLDER, FRONT	10
-	-	-	-	-	454276-1	FLOATING SHEAR, FRONT	9
-	-	-	-	-	1633108-7	ANVIL, COMBINATION .070	8
-	-	-	-	-	3-240641-5	SPACER	7
-	-	-	-	-	-	-	6
-	-	-	-	-	1-455889-4	DEPRESSOR, SHEAR	5
-	-	-	-	-	238011-8	BLOCK, CRIMPER SPACER	4
-	-	-	-	-	8-456134-7	CRIMPER, INSULATION F PREMIUM	3
-	-	-	-	-	1-455888-3	SPACER, CRIMPER	2
-	-	-	-	-	456404-9	CRIMPER, WIRE PREMIUM	1

DIMENSIONS	TOLERANCES UNLESS OTHERWISE SPECIFIED	DATE	BY	CHKD	APPD	NAME	PRODUCT SPEC
INCHES	0.125 ± .001 0.125 ± .001 0.125 ± .001 0.125 ± .001 0.125 ± .001	17SEP2007	C. CHEN	M. HERR	T. BERNHART	TYCE ELECTRONICS	TYCE ELECTRONICS
MATERIAL	FINISH	SCALE	DRAWING NO		RESTRICTED TO		
		3:5	A1 00779 C-1855321		CUSTOMER DRAWING		

CUSTOMER VIEWABLE ASSEMBLY