



Chipsmall Limited consists of a professional team with an average of over 10 year of expertise in the distribution of electronic components. Based in Hongkong, we have already established firm and mutual-benefit business relationships with customers from,Europe,America and south Asia,supplying obsolete and hard-to-find components to meet their specific needs.

With the principle of "Quality Parts,Customers Priority,Honest Operation,and Considerate Service",our business mainly focus on the distribution of electronic components. Line cards we deal with include Microchip,ALPS,ROHM,Xilinx,Pulse,ON,Everlight and Freescale. Main products comprise IC,Modules,Potentiometer,IC Socket,Relay,Connector.Our parts cover such applications as commercial,industrial, and automotives areas.

We are looking forward to setting up business relationship with you and hope to provide you with the best service and solution. Let us make a better world for our industry!



Contact us

Tel: +86-755-8981 8866 Fax: +86-755-8427 6832

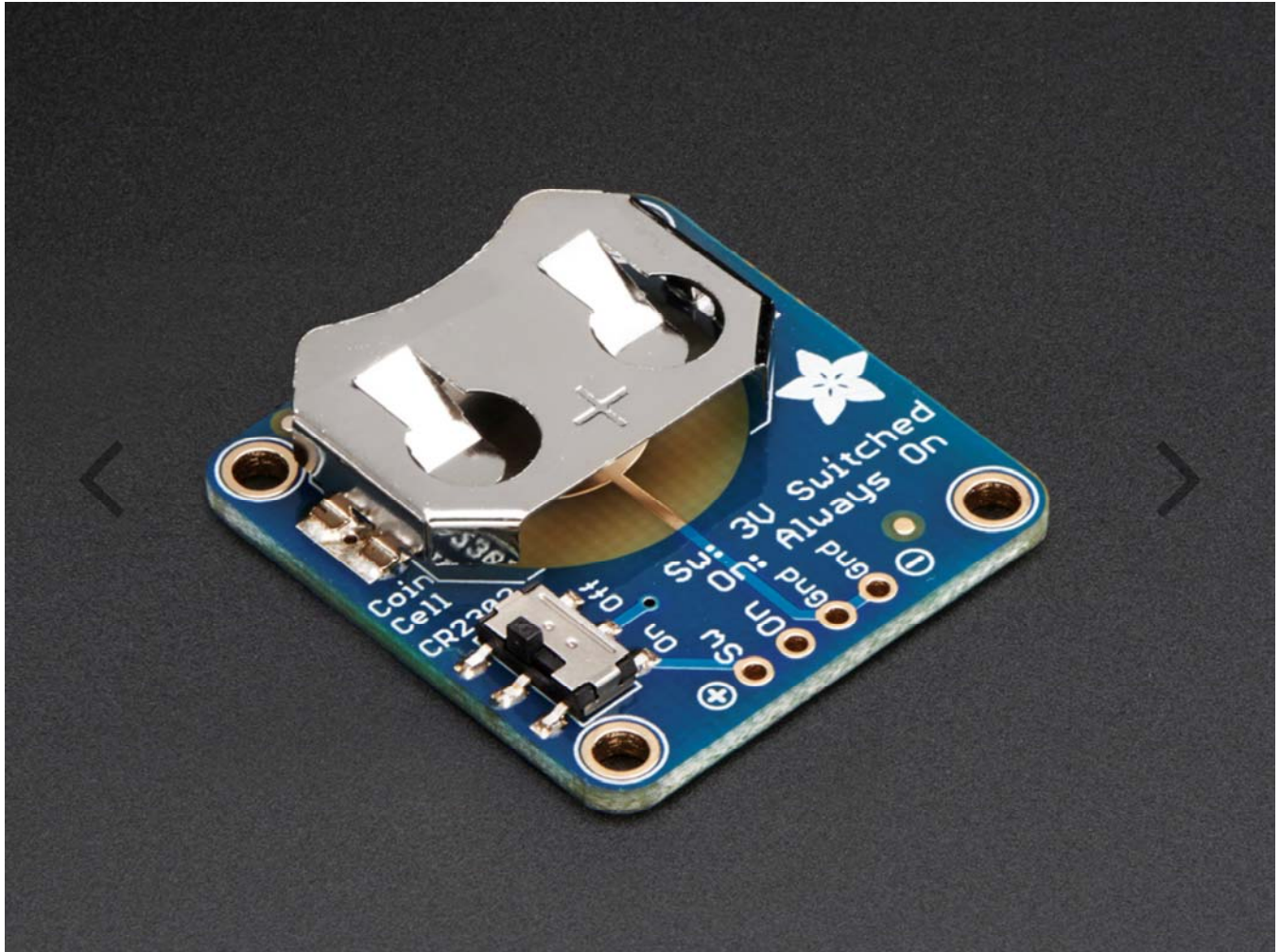
Email & Skype: info@chipsmall.com Web: www.chipsmall.com

Address: A1208, Overseas Decoration Building, #122 Zhenhua RD., Futian, Shenzhen, China



20mm Coin Cell Breakout w/On-Off Switch (CR2032)

PRODUCT ID: 1871



DESCRIPTION

Simple but effective – this sewable breakout board has a CR2032 coin cell battery holder soldered on, an on/off switch and 0.1" pitch breakout pins for easy connecting. Great for powering very low-current projects, or adding a battery backup circuit to a real-time-clock or similar. There's two ground pins, one 'switched' power pin, and one pin that is always on.

Comes with one fully assembled and tested breakout plus a small stick of 0.1" header so you can solder it on and plug into a breadboard. Coin cell battery is not included.

Technical Details

Dimensions:

29mm x 28mm x 1.6mm / 1.1" x 1.1" x 0.06"

Mounting hole distance: 22mm x 22mm / 0.9" x 0.9"

Weight: 3.5g