



Chipsmall Limited consists of a professional team with an average of over 10 year of expertise in the distribution of electronic components. Based in Hongkong, we have already established firm and mutual-benefit business relationships with customers from,Europe,America and south Asia,supplying obsolete and hard-to-find components to meet their specific needs.

With the principle of “Quality Parts,Customers Priority,Honest Operation,and Considerate Service”,our business mainly focus on the distribution of electronic components. Line cards we deal with include Microchip,ALPS,ROHM,Xilinx,Pulse,ON,Everlight and Freescale. Main products comprise IC,Modules,Potentiometer,IC Socket,Relay,Connector.Our parts cover such applications as commercial,industrial, and automotives areas.

We are looking forward to setting up business relationship with you and hope to provide you with the best service and solution. Let us make a better world for our industry!



Contact us

Tel: +86-755-8981 8866 Fax: +86-755-8427 6832

Email & Skype: info@chipsmall.com Web: www.chipsmall.com

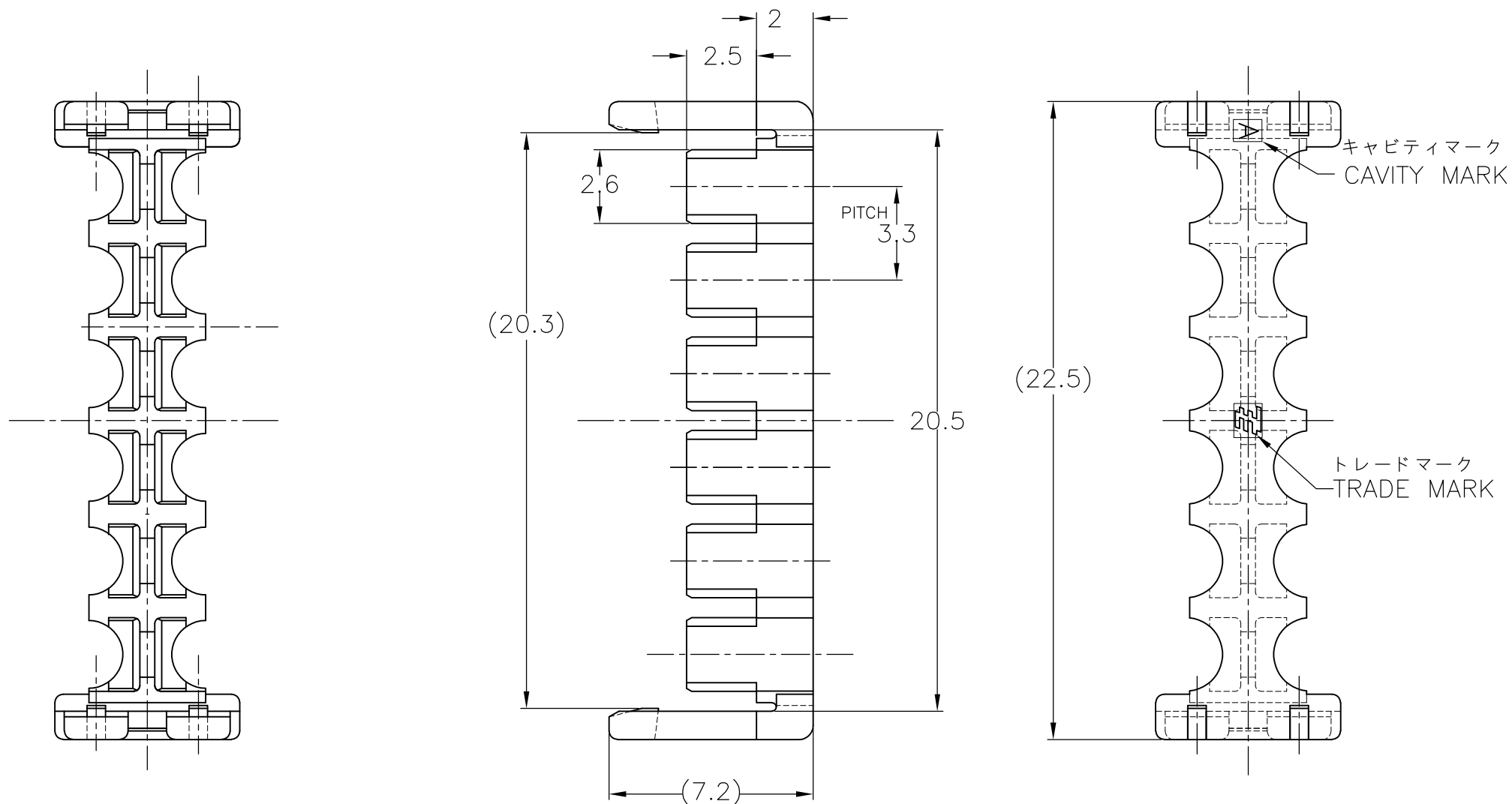
Address: A1208, Overseas Decoration Building, #122 Zhenhua RD., Futian, Shenzhen, China



THIS DRAWING IS UNPUBLISHED. RELEASED FOR PUBLICATION JUL, 2005.
 © COPYRIGHT 2005 BY TYCO ELECTRONICS CORPORATION. ALL INTERNATIONAL RIGHTS RESERVED.

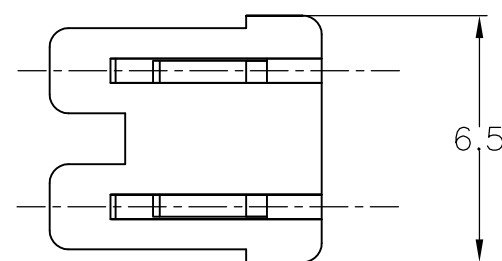
LOC	DIST	REVISIONS 変更					
J	/	P	LTR	DESCRIPTION	DATE	DWN	APVD
		B		REVISED ECR-10-019566	22SEP2010	T.T	T.M

-1; AS SHOWN



TABLE

ダブルロックプレート (DOUBLE LOCK PLATE)	6/6ナイロンガラス強化 (UL94V-0) (6/6 NYLON GLASS FILLED) (UL94V-0)
名称 (NAME)	材料 (MATERIAL)



- 1 適用製品型番
プラグハウジング: *-1871570-*
- 2 適用電線範囲
電線被覆外径: $\phi 1.5 \sim \phi 2.0\text{mm}$

- 1 APPLICABLE P/N
PLUG HOUSING: *-1871570-*
- 2 APPLICABLE WIRE RANGE
INSULATION DIA: $\phi 1.5 \sim \phi 2.0\text{mm}$

BLACK	1871822-1
COLOR	PART NUMBER

THIS DRAWING IS A CONTROLLED DOCUMENT.		DWN T.HATANO 21JUL2005	Tyco Electronics Corporation Kawasaki, Japan													
DIMENSIONS: 単位: 耗 mm		CHK N.YAMASAKI 21JUL2005														
TOLERANCES UNLESS OTHERWISE SPECIFIED: 一般公差		APVD N.YAMASAKI 21JUL2005	NAME 名称 GRACE INERTIA CONNECTOR 3.3 DOUBLE LOCK PLATE 12POS. 2-ROW, M-TYPE													
<table border="1"> <tr><td>0 PLC</td><td>± 0.3</td></tr> <tr><td>1 PLC</td><td>± 0.3</td></tr> <tr><td>2 PLC</td><td>±</td></tr> <tr><td>3 PLC</td><td>±</td></tr> <tr><td>4 PLC</td><td>±</td></tr> <tr><td>ANGLES</td><td>±</td></tr> </table>		0 PLC	± 0.3	1 PLC	± 0.3	2 PLC	±	3 PLC	±	4 PLC	±	ANGLES	±	PRODUCT SPEC 製品規格 108-78231	RESTRICTED TO	
0 PLC	± 0.3															
1 PLC	± 0.3															
2 PLC	±															
3 PLC	±															
4 PLC	±															
ANGLES	±															
MATERIAL 材料 SEE TABLE		APPLICATION SPEC 取付適用規格	SIZE A3	CAGE CODE 00779												
FINISH 仕上		WEIGHT	DRAWING NO 番号 G-1871822													
CUSTOMER DRAWING		SCALE 尺度 5:1		SHEET 1 OF 1												
		REV B														