



Chipsmall Limited consists of a professional team with an average of over 10 year of expertise in the distribution of electronic components. Based in Hongkong, we have already established firm and mutual-benefit business relationships with customers from,Europe,America and south Asia,supplying obsolete and hard-to-find components to meet their specific needs.

With the principle of “Quality Parts,Customers Priority,Honest Operation,and Considerate Service”,our business mainly focus on the distribution of electronic components. Line cards we deal with include Microchip,ALPS,ROHM,Xilinx,Pulse,ON,Everlight and Freescale. Main products comprise IC,Modules,Potentiometer,IC Socket,Relay,Connector.Our parts cover such applications as commercial,industrial, and automotives areas.

We are looking forward to setting up business relationship with you and hope to provide you with the best service and solution. Let us make a better world for our industry!



## Contact us

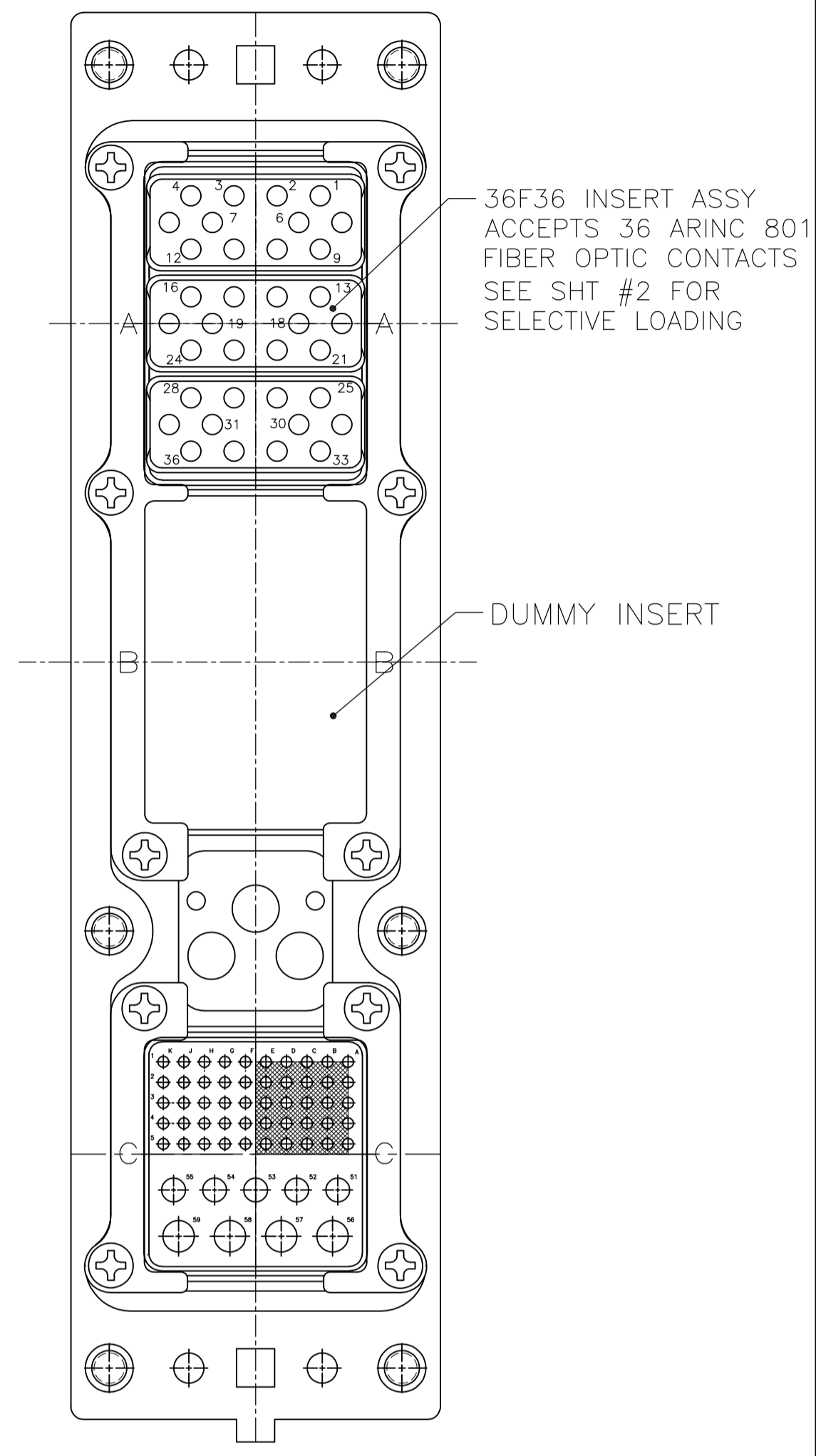
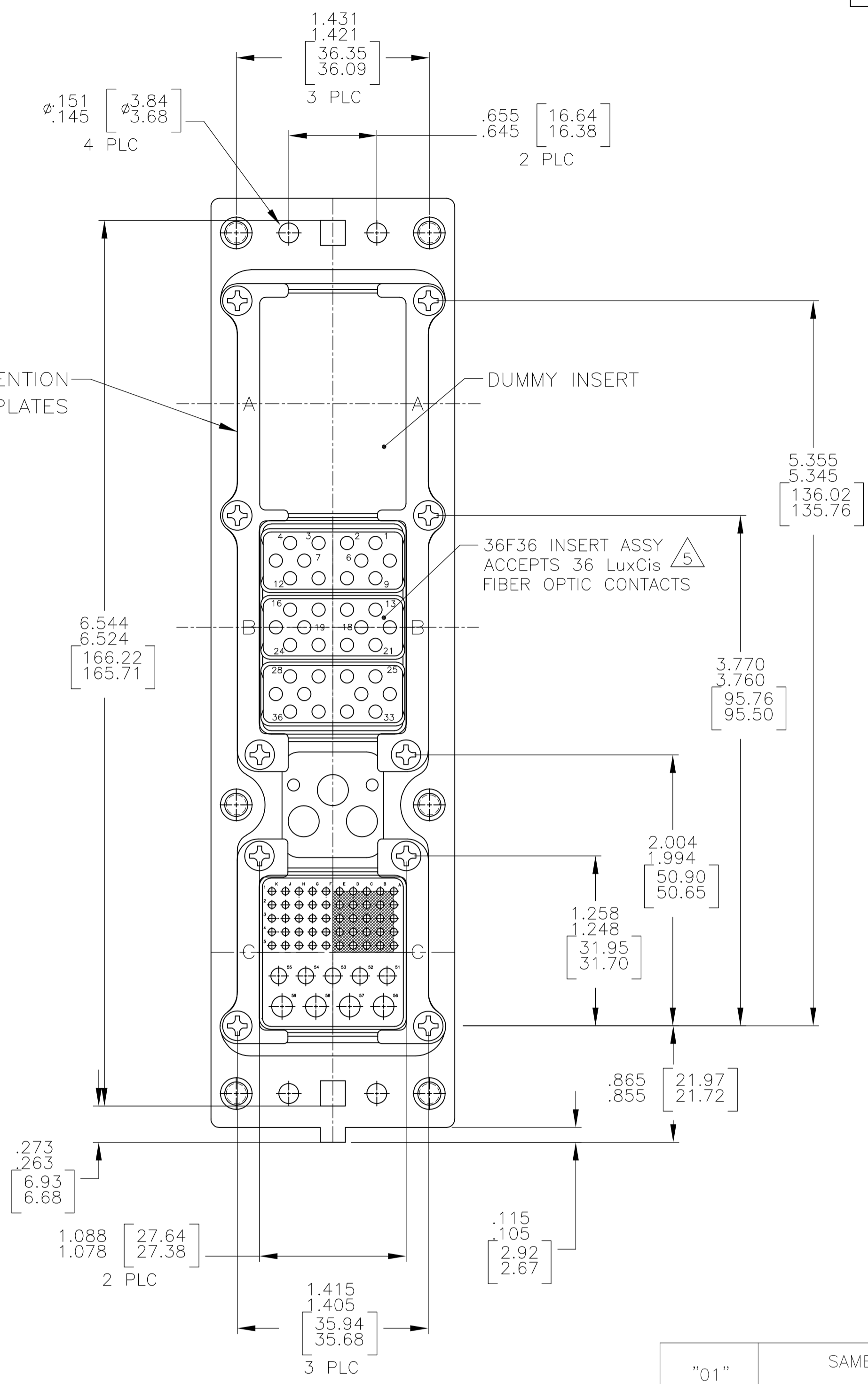
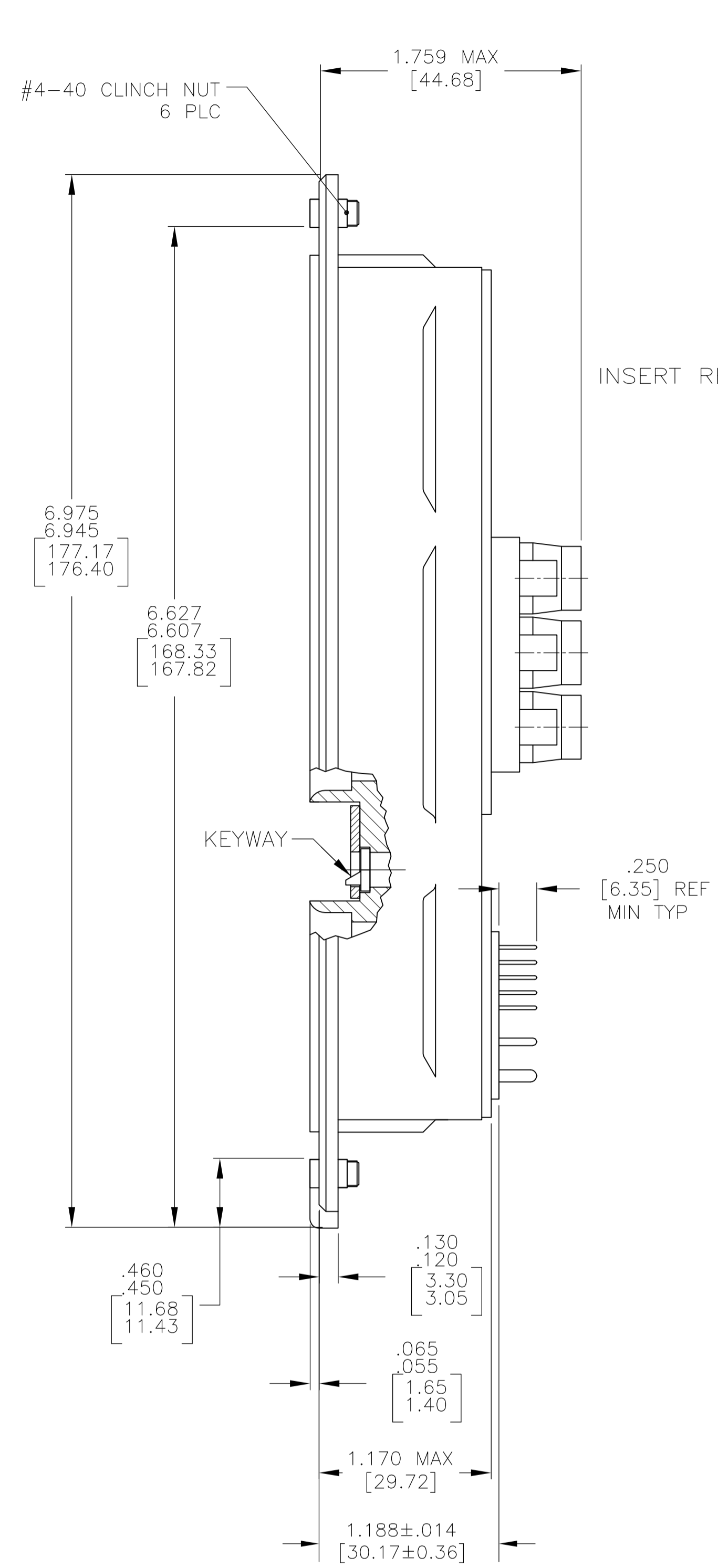
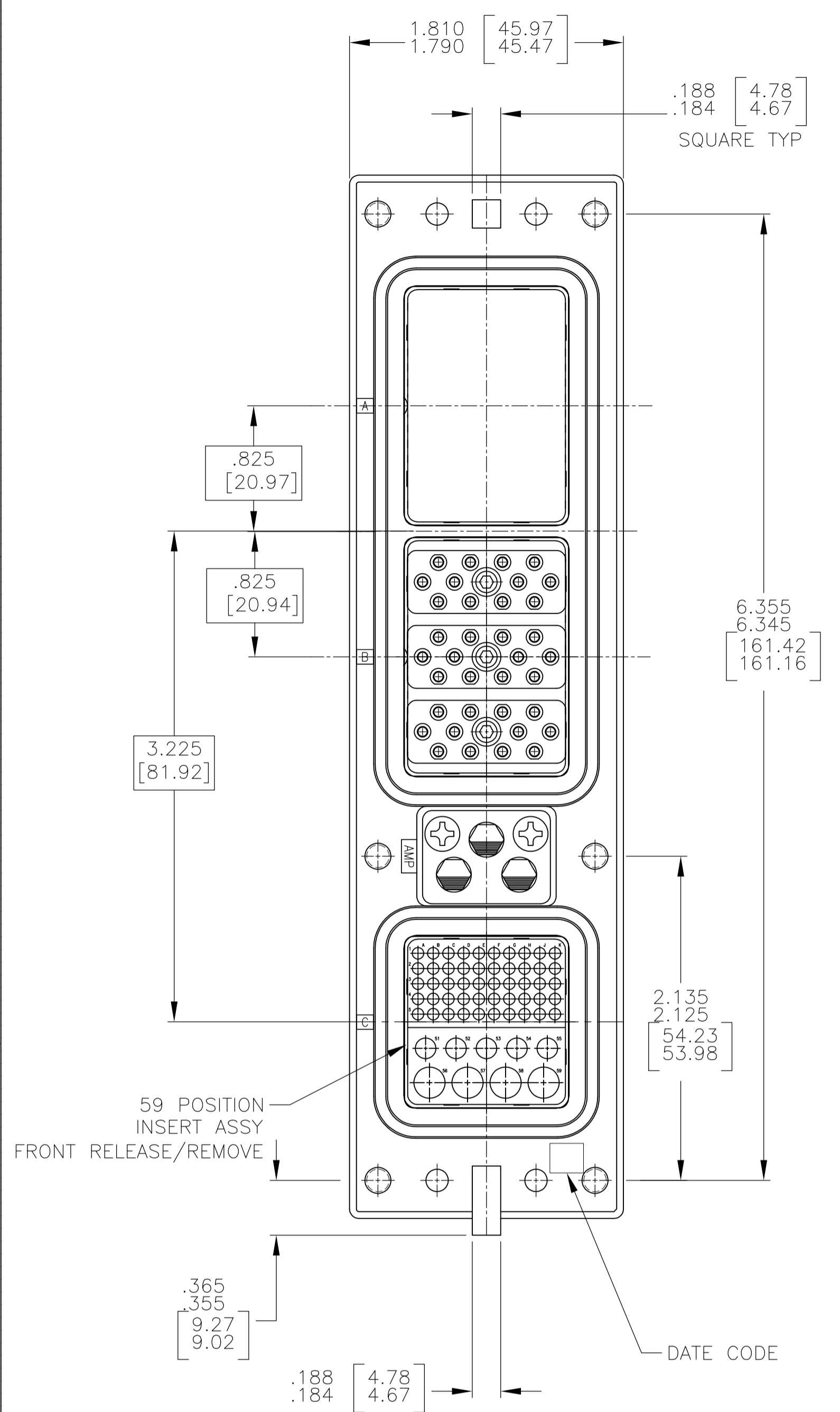
Tel: +86-755-8981 8866 Fax: +86-755-8427 6832

Email & Skype: info@chipsmall.com Web: www.chipsmall.com

Address: A1208, Overseas Decoration Building, #122 Zhenhua RD., Futian, Shenzhen, China



REVISONS		DATE	BY	APPV
F	LTR			
H	REV PER ECO-12-000109	24JAN12	PY	WB



- CONNECTOR DIMENSIONS ARE PER ARINC 600 SPECIFICATION.
- CONNECTOR IS SUPPLIED WITH CONTACTS (PER TABLE) ASSEMBLED AS SHOWN.
- KEYING SHOWN IN POSITION "01" FOR ILLUSTRATION ONLY. CONNECTORS SHIPPED WITH KEYING INSTALLED IN POSITION PER TABLE. FOR POSITION "00" KEYING HARDWARE SHIPPED UNASSEMBLED.
- MODULE B (-1), MODULE A (-2) (36F36) IS SUPPLIED WITHOUT CONTACTS. MUST BE ORDERED SEPARATELY.
- DUST COVER IS INSTALLED BUT NOT SHOWN.

COMPONENT	MATERIAL	FINISH
SHELL	DIE CAST ALUMINUM PER ASTM-B-85	ELECTROLESS NICKEL PER MIL-C-26074
INSERT RETENTION PLATES	ALUMINUM ALLOY PER ASTM-B-209	ELECTROLESS NICKEL PER MIL-C-26074
FLAT HEAD SCREWS AND LOCKWASHERS	STAINLESS STEEL	PASSIVATED
POLARIZING KEYS	ZINC ALLOY PER ASTM-B-86	-
POLARIZING KEY RETAINING PLATE	ALUMINUM ALLOY PER ASTM-B-209	BLUE ANODIZED PER MIL-A-8625
CLINCH NUT	STEEL	TRIVALENT CHROMATE OVER ZINC PLATE WITH MOLY LUBE
36F36 INSERT	THERMOSET OR THERMOPLASTIC PPS PER MIL-M-24519	-
DUMMY INSERT	ALUMINUM ALLOY PER ASTM-B-85	ELECTROLESS NICKEL PER MIL-C-26074
59 POSITION INSERT	THERMOSET OR THERMOPLASTIC PPS PER MIL-M-24519	-

KEYING POSITION	CONTACTS INCLUDED AND INSTALLED	PART NUMBER
"01"	SAME AS 1183150-2 EXCEPT USING TE 801 INSERTS	1883150-3
"01"	MODULE C 1663767-3 SZ 16 FILLER PLUG (QTY=5) 1663767-1 SZ 22 FILLER PLUG (QTY=15) 203839-2 SZ 16 SEALING PLUG (QTY=22) 211431-4 SZ 22 SOCKET CONTACT (QTY=35) 448140-3 SZ 12 PIN CONTACT (QTY=4) SELECTIVE LOADED (SEE SHEET #2) PURCHASED INSERTS USED IN THIS ASSEMBLY	1883150-2
"01"	MODULE C 211431-4 SZ 22 SOCKET CONTACT (QTY=50) 1-448139-1 SZ 16 PIN CONTACT (QTY=5) 448140-3 SZ 12 PIN CONTACT (QTY=4)	1883150-1

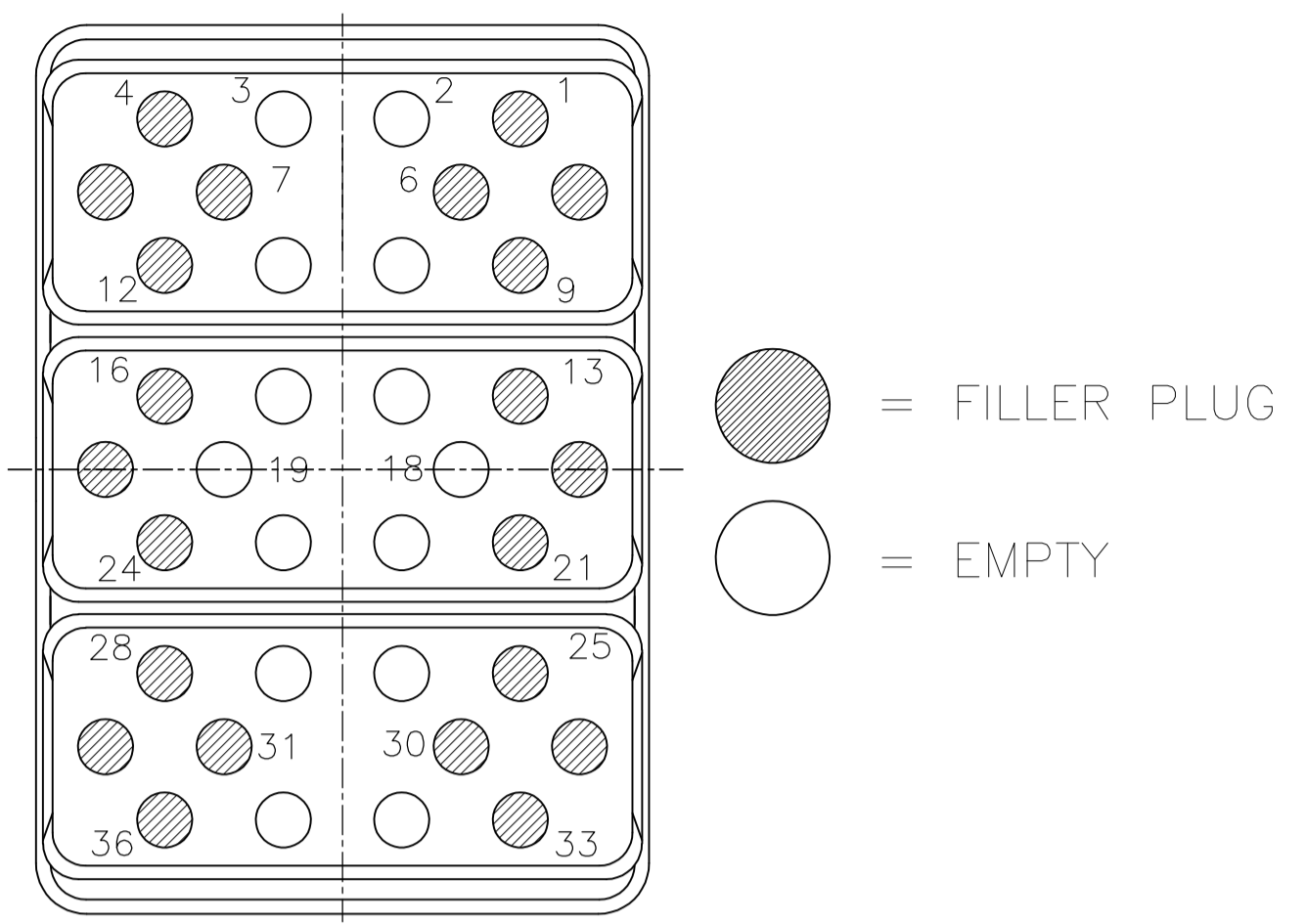
THIS DRAWING IS A CONTROLLED DOCUMENT. DIMENSIONS: INCHES. TOLERANCES UNLESS OTHERWISE SPECIFIED: 0 PLC ± .005, 1 PLC ± .004, 2 PLC ± .003, 3 PLC ± .002, 4 PLC ± .001, ANGLES ± .005.

DIN C.C.THOMAS 1-3-07, C.K.HOGAN 1-3-07, K.HOGAN 1-3-07

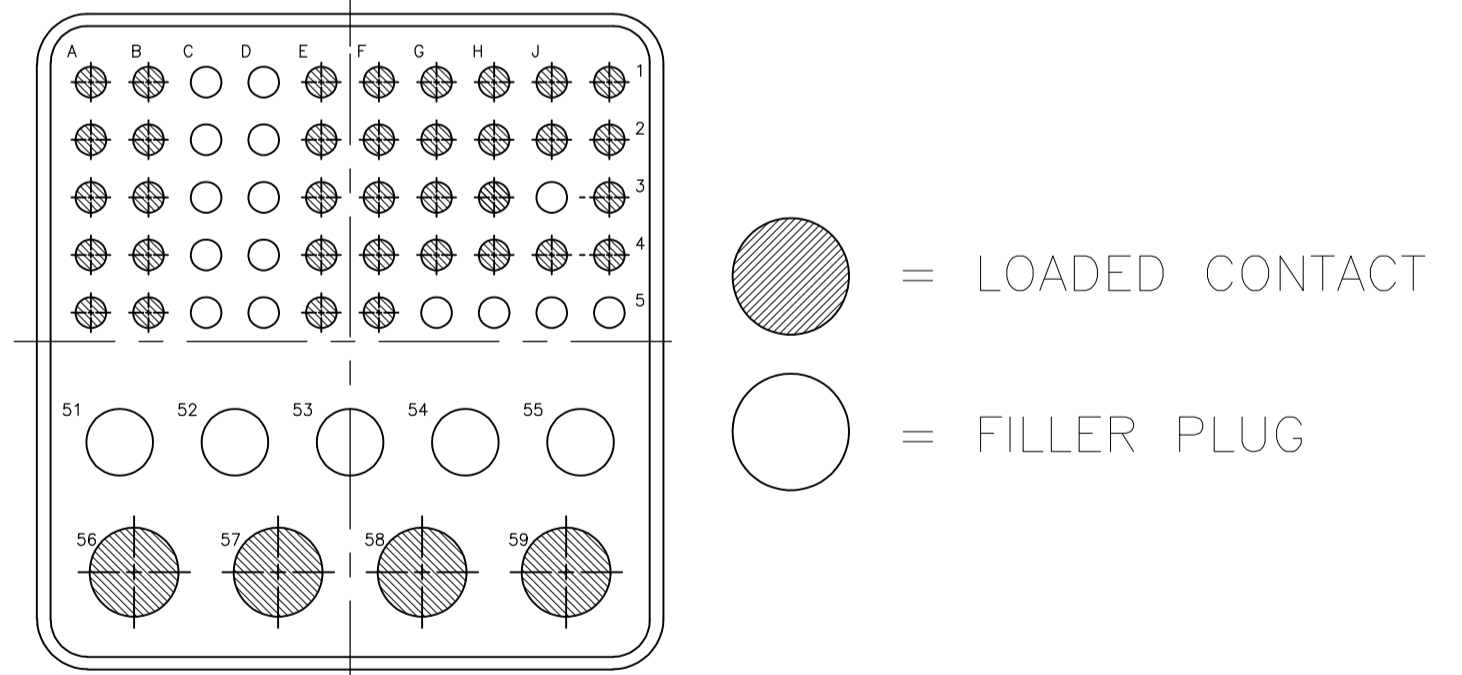
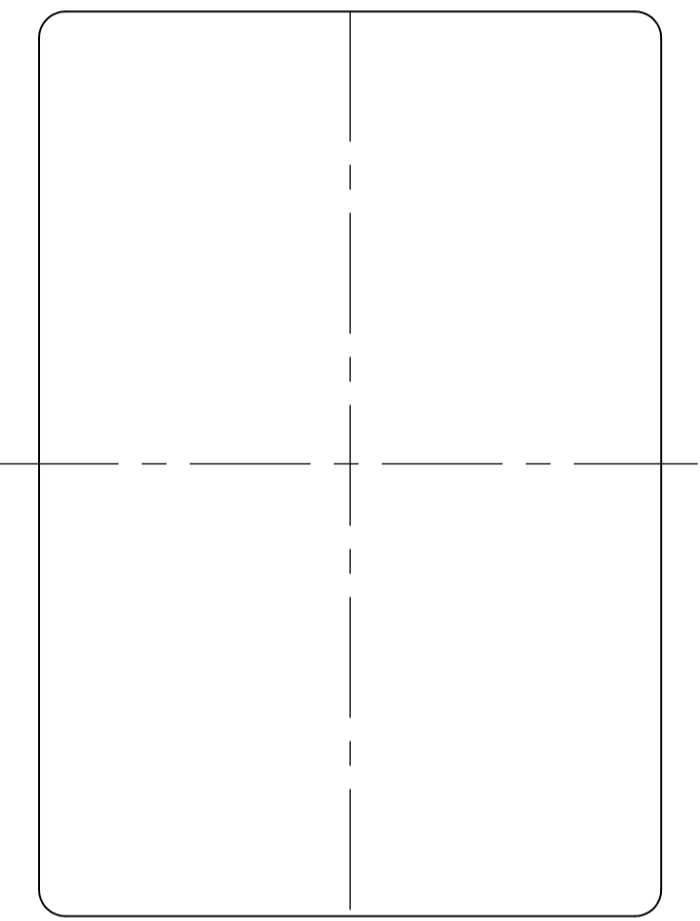
RCPT ASSY, SIZE 2, ARINC 600

SCALE 1.5:1 SHEET 1 OF 2 REV H



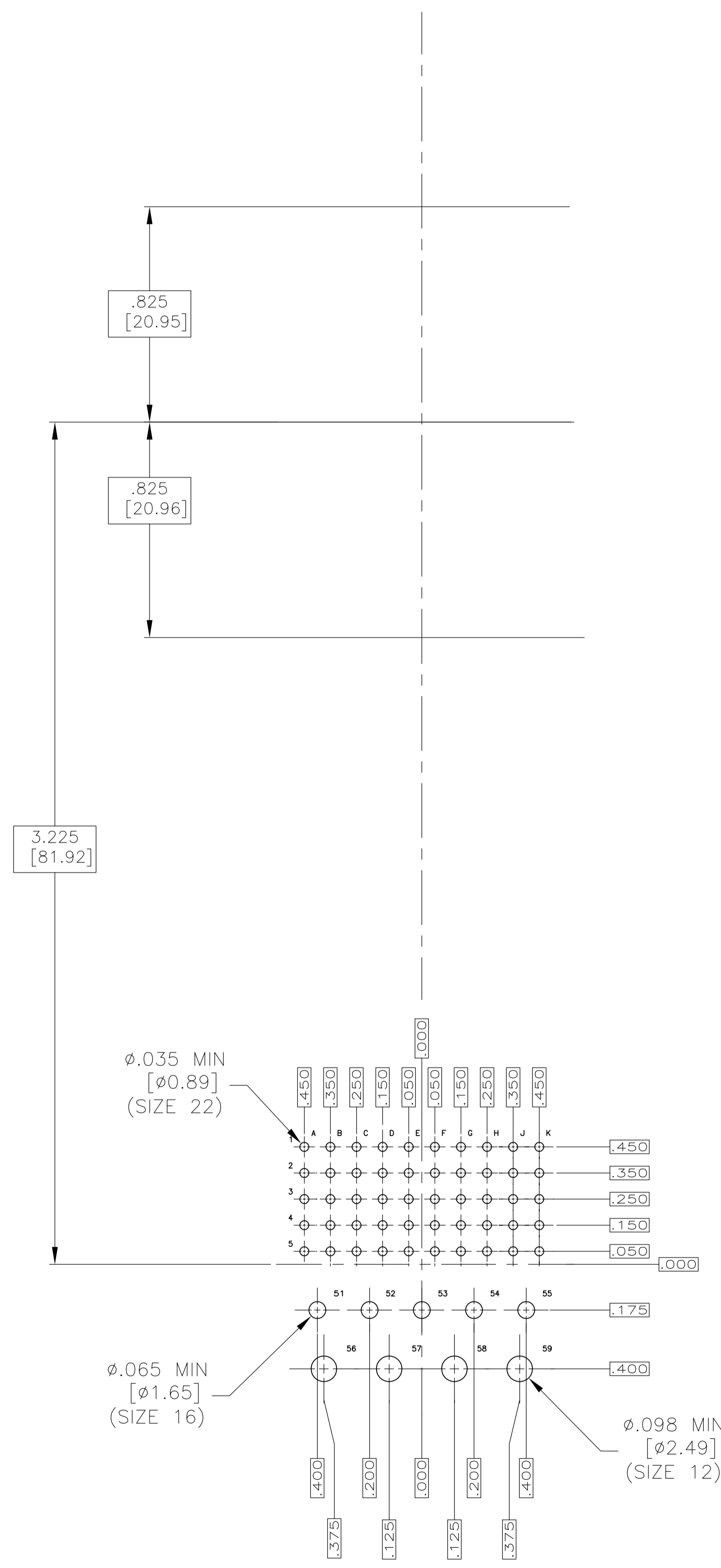


= FILLER PLUG  
 = EMPTY



= LOADED CONTACT  
 = FILLER PLUG

1883150-2  
SELECTIVE LOAD VIEW  
SCALE 3:1



RECOMMENDED  
P.C. BOARD LAYOUT  
SCALE 3:1

THIS DRAWING IS A CONTROLLED DOCUMENT.		DIN C.C.THOMAS 1-3-07		TE Connectivity	
		CHK K.HOGAN 1-3-07			
DIMENSIONS: INCHES		TOLERANCES UNLESS OTHERWISE SPECIFIED:		NAME RCPT ASSY, SIZE 2, ARINC 600	
		0. PLC ± -		APVD K.HOGAN 1-3-07	
		1. PLC ± -		PRODUCT SPEC	
		2. PLC ± -		APPLICATION SPEC	
		3. PLC ± -		WEIGHT	
MATERIAL SEE TABLE		FINISH SEE TABLE		SIZE A1 00779 C=1883150	
				CUSTOMER DRAWING SCALE 1.5:1 SHEET 2 OF 2 REV H	