



Chipsmall Limited consists of a professional team with an average of over 10 year of expertise in the distribution of electronic components. Based in Hongkong, we have already established firm and mutual-benefit business relationships with customers from,Europe,America and south Asia,supplying obsolete and hard-to-find components to meet their specific needs.

With the principle of “Quality Parts,Customers Priority,Honest Operation,and Considerate Service”,our business mainly focus on the distribution of electronic components. Line cards we deal with include Microchip,ALPS,ROHM,Xilinx,Pulse,ON,Everlight and Freescale. Main products comprise IC,Modules,Potentiometer,IC Socket,Relay,Connector.Our parts cover such applications as commercial,industrial, and automotives areas.

We are looking forward to setting up business relationship with you and hope to provide you with the best service and solution. Let us make a better world for our industry!



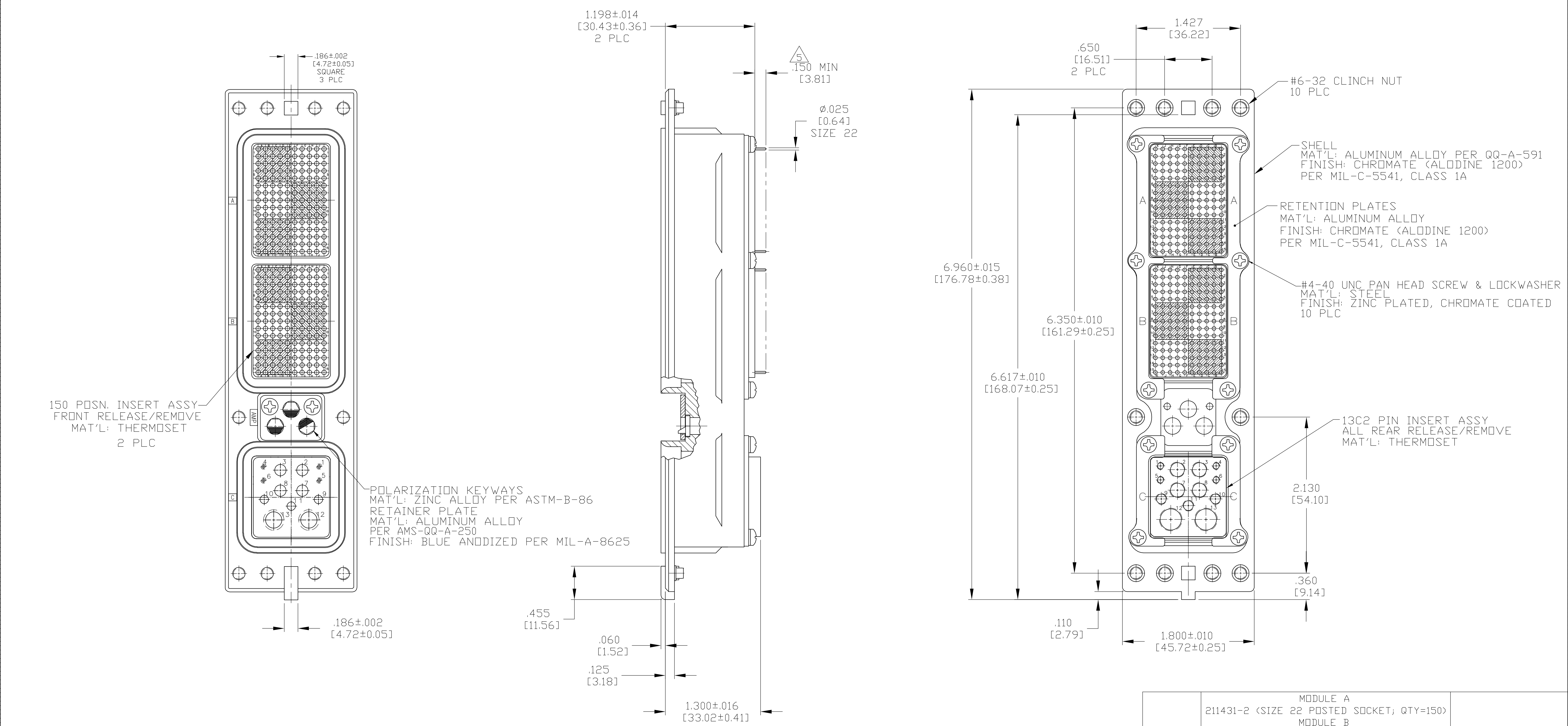
Contact us

Tel: +86-755-8981 8866 Fax: +86-755-8427 6832

Email & Skype: info@chipsmall.com Web: www.chipsmall.com

Address: A1208, Overseas Decoration Building, #122 Zhenhua RD., Futian, Shenzhen, China





| | | |
|-----------------|---|-------------|
| "02" | MODULE A 211431-2 (SIZE 22 POSTED SOCKET; QTY=150) | 1883359-2 |
| | MODULE B 211431-2 (SIZE 22 POSTED SOCKET; QTY=150) | |
| "06" | MODULE C 208265-3 (SIZE 20 CRIMP PIN; QTY=1) | 1883359-1 |
| | 208271-3 (SIZE 12 CRIMP PIN; QTY=2) | |
| | 1663767-6 (SIZE 20 FILLER PLUG; QTY=3) | |
| | 1663767-7 (SIZE 16 FILLER PLUG; QTY=3) | |
| | 1663767-8 (SIZE 12 FILLER PLUG; QTY=2) | |
| | 1663132-1 (SIZE 5 FILLER PLUG; QTY=2) | |
| KEYING POSITION | CONTACTS INCLUDED | PART NUMBER |

- CONNECTOR DIMENSIONS ARE PER ARINC 600 SPECIFICATION.
 - CONNECTOR IS SUPPLIED WITH CONTACTS (PER TABLE) ASSEMBLED AS SHOWN. CRIMP CONTACTS AND FILLER PLUGS FOR MODULE C ARE PACKAGED SEPARATELY; NOT INSTALLED.
 - CONNECTOR IS SUPPLIED WITH A DUST COVER INSTALLED (NOT SHOWN).
 - CONTACTS NOT SHOWN IN FRONT & REAR VIEWS FOR CLARITY.
- 5 WITH CONTACT FULLY SEATED IN CAVITY.

THIS DRAWING IS A CONTROLLED DOCUMENT.

| | | | |
|-------------------------|--|-----------------------|---|
| DIMENSIONS: INCHES [mm] | TOLERANCES UNLESS OTHERWISE SPECIFIED: | DIN C.C.THOMAS 4-3-06 | Tyco Electronics Corporation Harrisburg, Pa 17105-3608 |
| 0 PLC ± - | 1 PLC ± - | 4-12-06 | |
| 2 PLC ± - | 3 PLC ± .005 [0.13] | K.HOGAN 4-12-06 | RECEPTACLE ASSY, SIZE 2, ARINC 600 (150/150/13C2) |
| 4 PLC ± - | ANGLES ± - | PRODUCT SPEC | |
| MATERIAL SEE CALLOUTS | FINISH SEE CALLOUTS | WEIGHT - | RESTRICTED TO |
| CUSTOMER DRAWING | | SIZE A1 | SCALE 1.5:1 SHEET 1 OF 1 REV C |