



Chipsmall Limited consists of a professional team with an average of over 10 year of expertise in the distribution of electronic components. Based in Hongkong, we have already established firm and mutual-benefit business relationships with customers from,Europe,America and south Asia,supplying obsolete and hard-to-find components to meet their specific needs.

With the principle of “Quality Parts,Customers Priority,Honest Operation,and Considerate Service”,our business mainly focus on the distribution of electronic components. Line cards we deal with include Microchip,ALPS,ROHM,Xilinx,Pulse,ON,Everlight and Freescale. Main products comprise IC,Modules,Potentiometer,IC Socket,Relay,Connector.Our parts cover such applications as commercial,industrial, and automotives areas.

We are looking forward to setting up business relationship with you and hope to provide you with the best service and solution. Let us make a better world for our industry!



Contact us

Tel: +86-755-8981 8866 Fax: +86-755-8427 6832

Email & Skype: info@chipsmall.com Web: www.chipsmall.com

Address: A1208, Overseas Decoration Building, #122 Zhenhua RD., Futian, Shenzhen, China



LOC		DIST		REVISIONS			
F	LTR	DESCRIPTION	DATE	DMN	APVD		
F		REV PER ECO 13-006669	4-19-13	CT	DM		

- CONNECTOR DIMENSIONS ARE PER ARINC 600 SPECIFICATION.
 - CONNECTOR IS SUPPLIED WITH CONTACTS AS LISTED IN TABLE.
 - KEYING SHOWN IN POSITION "01" FOR ILLUSTRATION ONLY. CONNECTORS SHIPPED WITH KEYING INSTALLED IN POSITION PER TABLE. FOR POSITION "00" KEYING HARDWARE SHIPPED UNASSEMBLED.
- 4 WITH CONTACTS FULLY SEATED TO REAR OF CAVITY.
5 CONTACTS ARE SOLDER COATED WITH Sn60 OR Sn63 SOLDER.
6 DUST COVER INSTALLED FOR SHIPPING.

KEYING POSITION	CONTACTS INCLUDED AND INSTALLED	PART NUMBER
47	MODULE A 1-211431-5 (SIZE 22 POSTED; QTY=150) MODULE B 1-211431-5 (SIZE 22 POSTED; QTY=150) MODULE C 1-211431-5 (SIZE 22 POSTED; QTY=80) 2-448138-7 (SIZE 20 POSTED; QTY=4) 2-448139-6 (SIZE 16 POSTED; QTY=1)	1883712-4
01	MODULE A 150 POSN MONOBLOCK W/ NONREMOVABLE CONTACTS MODULE B 150 POSN MONOBLOCK W/ NONREMOVABLE CONTACTS MODULE C 211431-4 (SIZE 22 POSTED; QTY=80) 2-448138-6 (SIZE 20 POSTED; QTY=4) 2-448139-5 (SIZE 16 POSTED; QTY=1)	1883712-3
47	MODULE A 150 POSN MONOBLOCK W/ NONREMOVABLE CONTACTS MODULE B 150 POSN MONOBLOCK W/ NONREMOVABLE CONTACTS MODULE C 211431-4 (SIZE 22 POSTED; QTY=80) 2-448138-6 (SIZE 20 POSTED; QTY=4) 2-448139-5 (SIZE 16 POSTED; QTY=1)	1883712-2
40	MODULE A 1-211431-5 (SIZE 22 POSTED; QTY=150) MODULE B 1-211431-5 (SIZE 22 POSTED; QTY=150) MODULE C 1-211431-5 (SIZE 22 POSTED; QTY=80) 2-448138-7 (SIZE 20 POSTED; QTY=4) 2-448139-6 (SIZE 16 POSTED; QTY=1)	1883712-1

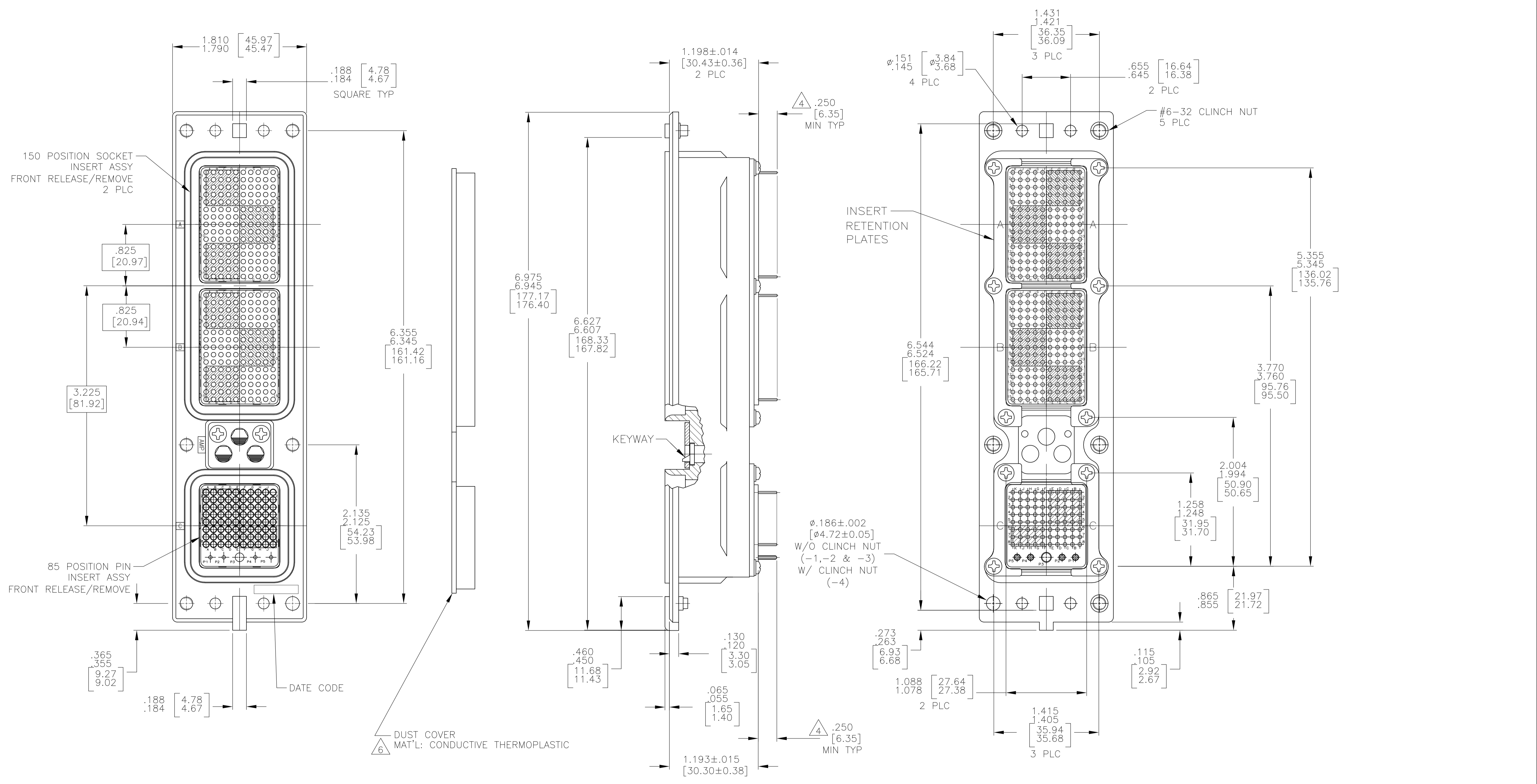
COMPONENT	MATERIAL	FINISH
SHELL	DIE CAST ALUMINUM PER ASTM-B-85	ELECTROLESS NICKEL PER MIL-C-26074
INSERT RETENTION PLATES	ALUMINUM ALLOY PER ASTM-B-209	ELECTROLESS NICKEL PER MIL-C-26074
SCREWS AND LOCKWASHERS	STEEL OR STAINLESS STEEL	CHROMATE OVER ZINC OR PASSIVATED -2 PASSIVATED SST
POLARIZING KEYS	ZINC ALLOY PER ASTM-B-86	-
INSERTS	THERMOSET OR THERMOPLASTIC PPS PER MIL-M-24519	-
POLARIZING KEY RETAINING PLATE	ALUMINUM ALLOY PER ASTM-B-209	BLUE ANODIZED PER MIL-A-8625
-	-	-

THIS DRAWING IS A CONTROLLED DOCUMENT.

DMN	C.C.THOMAS	10-6-06
CHK	K.HOGAN	10-6-06
APVD	K.HOGAN	10-6-06

STE TE Connectivity
 RCPT ASSY, SIZE 2, ARINC 600 (150/150/85)
 SIZE: A1 00779 ©=1883712
 SCALE: 1:1 SHEET 1 OF 2 REV F

LOC		DIST		REVISIONS			
P	LTR	DESCRIPTION	DATE	DN	APVD		
-	-	SEE SHEET #1	-	-	-	-	-



THIS DRAWING IS A CONTROLLED DOCUMENT.		DIN	C.C.THOMAS	10-6-06	 TE Connectivity
DIMENSIONS: INCHES		CHK	K.HOGAN	10-6-06	
TOLERANCES UNLESS OTHERWISE SPECIFIED:		APVD	K.HOGAN	10-6-06	NAME
0 PLC	±	RCPT ASSY, SIZE 2, ARINC 600 (150/150/85)		RESTRICTED TO	
1 PLC	±	APPLICATION SPEC		SIZE	
2 PLC	±	WEIGHT		CAGE CODE	
3 PLC	±	A1 00779		DRAWING NO	
4 PLC	±	C=1883712		REV	
ANGLES	±	CUSTOMER DRAWING		SCALE	
SEE TABLE	SEE TABLE	1:1		SHEET 2 OF 2	