



Chipsmall Limited consists of a professional team with an average of over 10 year of expertise in the distribution of electronic components. Based in Hongkong, we have already established firm and mutual-benefit business relationships with customers from,Europe,America and south Asia,supplying obsolete and hard-to-find components to meet their specific needs.

With the principle of "Quality Parts,Customers Priority,Honest Operation,and Considerate Service",our business mainly focus on the distribution of electronic components. Line cards we deal with include Microchip,ALPS,ROHM,Xilinx,Pulse,ON,Everlight and Freescale. Main products comprise IC,Modules,Potentiometer,IC Socket,Relay,Connector.Our parts cover such applications as commercial,industrial, and automotives areas.

We are looking forward to setting up business relationship with you and hope to provide you with the best service and solution. Let us make a better world for our industry!



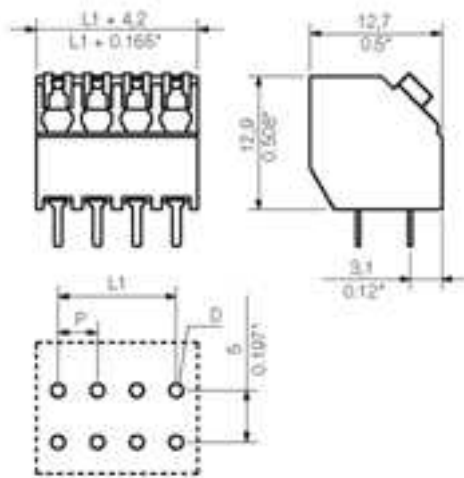
Contact us

Tel: +86-755-8981 8866 Fax: +86-755-8427 6832

Email & Skype: info@chipsmall.com Web: www.chipsmall.com

Address: A1208, Overseas Decoration Building, #122 Zhenhua RD., Futian, Shenzhen, China





General ordering data

Order No.	1885180000
Part designation	LSF-SMT3.50/2/135 1.5
Version	PCB terminal, Push In, Reflow solder connection, Clamping range, max.: 1.5 mm ² , Pitch: 3.50 mm, No. of poles: 2, 135°, Tube
EAN	4032248490042
Qty.	71 pc(s).

System parameters

Product family	System LS
Conductor connection system	Push In
Fitted to PCB	Reflow solder connection
Outgoing direction of conductor	135°
Pitch	3.5 mm
Pitch in inch	0.138 inch
No. of poles	2
Fitted by customer	no
No. of rows	1
Solder pin length	1.5 mm
Dia. of fitting hole	1.1 mm
Fitting hole tolerance	+ 0.1 mm
No. of solder pins per pole	2
Stripping length	8 mm

System parameters

L1 in mm	3.5 mm
L1 in inch	0.138 inch
Electric shock protection to DIN VDE 0470	IP 20
Electric shock protection to DIN VDE 0470	Safe from finger touch

Material data

Insulating material	LCP GF
Colour	black
colour chart	Similar to RAL 9011
Insulating material group	IIIa
Flammability class UL 94	V-0
CTI	>= 175
Contact base material	Copper alloy
Contact surface	tinned
Storage temperature, min.	-25 °C
Storage temperature, max.	55 °C

Connectable conductors

Clamping range, min.	0.13 mm ²
Clamping range, max.	1.5 mm ²
AWG, min.	24
AWG, max.	16
O.D. of conductor insulation, max.	2.9 mm
Solid, min. H05(07) V-U	0.2 mm ²
Solid, max. H05(07) V-U	1.5 mm ²
Flexible, min. H05(07) V-K	0.2 mm ²
Flexible, max. H05(07) V-K	1.5 mm ²
With wire end ferrule, acc. to DIN 46 228/1, min.	0.25 mm ²
With wire end ferrule, acc. to DIN 46 228/1, max.	1.5 mm ²
w. plastic collar ferrule, DIN 46228 pt 4, min.	0.25 mm ²
w. plastic collar ferrule, DIN 46228 pt 4, max.	0.75 mm ²

DIN IEC rating data

Rated current, min. No. pins (Tu=20°C)	17.5 A
Rated current, max. No. pins (Tu=20°C)	16 A
Rated current, min. No. pins (Tu=40°C)	17.5 A
Rated current, max. No. pins (Tu=40°C)	14 A
Rated voltage for overvoltage class/pollution severity II/2	320 V
Rated voltage for overvoltage class/pollution severity III/2	160 V
Rated voltage for overvoltage class/pollution severity III/3	160 V
Rated impulse withstand voltage for overvoltage class/pollution severity II/2	2.5 kV
Rated impulse withstand voltage for overvoltage class/pollution severity III/2	2.5 kV
Rated impulse withstand voltage for overvoltage class/pollution severity III/3	2.5 kV
Short-time withstand current resistance	3 x 1s with 80 A

CSA rating data

Rated voltage (Use group D)	300 V
Rated current (Use group D)	10 A
AWG conductor (field wiring), min.	24
AWG conductor (field wiring), max.	16

UL 1059 rating data

Rated voltage (Use group D)	300 V
Rated current (Use group D)	10 A
AWG conductor, min.	24
AWG conductor, max.	16

Approvals

Approvals institutes



Classifications

eClass 5.1	27-26-11-01
------------	-------------

Similar products

Order No.	Part designation	Version
1885650000	LSF-SMT3.50/2/135 3.5	PCB terminal, Push In, Reflow solder connection, Clamping range, max.: 1.5 mm ² , Pitch: 3.50 mm, No. of poles: 2, 135°, Tube
1887340000	LSF-SMT3.5/2/135 3.5R	PCB terminal, Push In, Reflow solder connection, Clamping range, max.: 1.5 mm ² , Pitch: 3.50 mm, No. of poles: 2, 135°, Tape
1887550000	LSF-SMT3.5/2/135 1.5R	PCB terminal, Push In, Reflow solder connection, Clamping range, max.: 1.5 mm ² , Pitch: 3.50 mm, No. of poles: 2, 135°, Tape
1885660000	LSF-SMT3.50/3/135 3.5	PCB terminal, Push In, Reflow solder connection, Clamping range, max.: 1.5 mm ² , Pitch: 3.50 mm, No. of poles: 3, 135°, Tube
1887350000	LSF-SMT3.5/3/135 3.5R	PCB terminal, Push In, Reflow solder connection, Clamping range, max.: 1.5 mm ² , Pitch: 3.50 mm, No. of poles: 3, 135°, Tape
1885190000	LSF-SMT3.50/3/135 1.5	PCB terminal, Push In, Reflow solder connection, Clamping range, max.: 1.5 mm ² , Pitch: 3.50 mm, No. of poles: 3, 135°, Tube
1887560000	LSF-SMT3.5/3/135 1.5R	PCB terminal, Push In, Reflow solder connection, Clamping range, max.: 1.5 mm ² , Pitch: 3.50 mm, No. of poles: 3, 135°, Tape
1885670000	LSF-SMT3.50/4/135 3.5	PCB terminal, Push In, Reflow solder connection, Clamping range, max.: 1.5 mm ² , Pitch: 3.50 mm, No. of poles: 4, 135°, Tube
1887360000	LSF-SMT3.5/4/135 3.5R	PCB terminal, Push In, Reflow solder connection, Clamping range, max.: 1.5 mm ² , Pitch: 3.50 mm, No. of poles: 4, 135°, Tape
1885200000	LSF-SMT3.50/4/135 1.5	PCB terminal, Push In, Reflow solder connection, Clamping range, max.: 1.5 mm ² , Pitch: 3.50 mm, No. of poles: 4, 135°, Tube
1887580000	LSF-SMT3.5/4/135 1.5R	PCB terminal, Push In, Reflow solder connection, Clamping range, max.: 1.5 mm ² , Pitch: 3.50 mm, No. of poles: 4, 135°, Tape
1885680000	LSF-SMT3.50/5/135 3.5	PCB terminal, Push In, Reflow solder connection, Clamping range, max.: 1.5 mm ² , Pitch: 3.50 mm, No. of poles: 5, 135°, Tube

1887460000	LSF-SMT3.5/5/135 3.5R	PCB terminal, Push In, Reflow solder connection, Clamping range, max.: 1.5 mm ² , Pitch: 3.50 mm, No. of poles: 5, 135°, Tape
1885210000	LSF-SMT3.5/5/135 1.5	PCB terminal, Push In, Reflow solder connection, Clamping range, max.: 1.5 mm ² , Pitch: 3.50 mm, No. of poles: 5, 135°, Tube
1887630000	LSF-SMT3.5/5/135 1.5R	PCB terminal, Push In, Reflow solder connection, Clamping range, max.: 1.5 mm ² , Pitch: 3.50 mm, No. of poles: 5, 135°, Tape
1885690000	LSF-SMT3.5/6/135 3.5	PCB terminal, Push In, Reflow solder connection, Clamping range, max.: 1.5 mm ² , Pitch: 3.50 mm, No. of poles: 6, 135°, Tube
1887470000	LSF-SMT3.5/6/135 3.5R	PCB terminal, Push In, Reflow solder connection, Clamping range, max.: 1.5 mm ² , Pitch: 3.50 mm, No. of poles: 6, 135°, Tape
1885220000	LSF-SMT3.5/6/135 1.5	PCB terminal, Push In, Reflow solder connection, Clamping range, max.: 1.5 mm ² , Pitch: 3.50 mm, No. of poles: 6, 135°, Tube
1887640000	LSF-SMT3.5/6/135 1.5R	PCB terminal, Push In, Reflow solder connection, Clamping range, max.: 1.5 mm ² , Pitch: 3.50 mm, No. of poles: 6, 135°, Tape
1885700000	LSF-SMT3.5/7/135 3.5	PCB terminal, Push In, Reflow solder connection, Clamping range, max.: 1.5 mm ² , Pitch: 3.50 mm, No. of poles: 7, 135°, Tube
1887480000	LSF-SMT3.5/7/135 3.5R	PCB terminal, Push In, Reflow solder connection, Clamping range, max.: 1.5 mm ² , Pitch: 3.50 mm, No. of poles: 7, 135°, Tape
1885230000	LSF-SMT3.5/7/135 1.5	PCB terminal, Push In, Reflow solder connection, Clamping range, max.: 1.5 mm ² , Pitch: 3.50 mm, No. of poles: 7, 135°, Tube
1887650000	LSF-SMT3.5/7/135 1.5R	PCB terminal, Push In, Reflow solder connection, Clamping range, max.: 1.5 mm ² , Pitch: 3.50 mm, No. of poles: 7, 135°, Tape
1885710000	LSF-SMT3.5/8/135 3.5	PCB terminal, Push In, Reflow solder connection, Clamping range, max.: 1.5 mm ² , Pitch: 3.50 mm, No. of poles: 8, 135°, Tube
1887490000	LSF-SMT3.5/8/135 3.5R	PCB terminal, Push In, Reflow solder connection, Clamping range, max.: 1.5 mm ² , Pitch: 3.50 mm, No. of poles: 8, 135°, Tape
1885240000	LSF-SMT3.5/8/135 1.5	PCB terminal, Push In, Reflow solder connection, Clamping range, max.: 1.5 mm ² , Pitch: 3.50 mm, No. of poles: 8, 135°, Tube
1887660000	LSF-SMT3.5/8/135 1.5R	PCB terminal, Push In, Reflow solder connection, Clamping range, max.: 1.5 mm ² , Pitch: 3.50 mm, No. of poles: 8, 135°, Tape
1885720000	LSF-SMT3.5/9/135 3.5	PCB terminal, Push In, Reflow solder connection, Clamping range, max.: 1.5 mm ² , Pitch: 3.50 mm, No. of poles: 9, 135°, Tube
1887500000	LSF-SMT3.5/9/135 3.5R	PCB terminal, Push In, Reflow solder connection, Clamping range, max.: 1.5 mm ² , Pitch: 3.50 mm, No. of poles: 9, 135°, Tape
1885250000	LSF-SMT3.5/9/135 1.5	PCB terminal, Push In, Reflow solder connection, Clamping range, max.: 1.5 mm ² , Pitch: 3.50 mm, No. of poles: 9, 135°, Tube
1887670000	LSF-SMT3.5/9/135 1.5R	PCB terminal, Push In, Reflow solder connection, Clamping range, max.: 1.5 mm ² , Pitch: 3.50 mm, No. of poles: 9, 135°, Tape
1885730000	LSF-SMT3.5/10/135 3.5	PCB terminal, Push In, Reflow solder connection, Clamping range, max.: 1.5 mm ² , Pitch: 3.50 mm, No. of poles: 10, 135°, Tube
1887510000	LSF-SMT3.5/10/135 3.5R	PCB terminal, Push In, Reflow solder connection, Clamping range, max.: 1.5 mm ² , Pitch: 3.50 mm, No. of poles: 10, 135°, Tape
1885260000	LSF-SMT3.5/10/135 1.5	PCB terminal, Push In, Reflow solder connection, Clamping range, max.: 1.5 mm ² , Pitch: 3.50 mm, No. of poles: 10, 135°, Tube
1887680000	LSF-SMT3.5/10/135 1.5R	PCB terminal, Push In, Reflow solder connection, Clamping range, max.: 1.5 mm ² , Pitch: 3.50 mm, No. of poles: 10, 135°, Tape
1885740000	LSF-SMT3.5/11/135 3.5	PCB terminal, Push In, Reflow solder connection, Clamping range, max.: 1.5 mm ² , Pitch: 3.50 mm, No. of poles: 11, 135°, Tube
1887520000	LSF-SMT3.5/11/135 3.5R	PCB terminal, Push In, Reflow solder connection, Clamping range, max.: 1.5 mm ² , Pitch: 3.50 mm, No. of poles: 11, 135°, Tape
1885270000	LSF-SMT3.5/11/135 1.5	PCB terminal, Push In, Reflow solder connection, Clamping range, max.: 1.5 mm ² , Pitch: 3.50 mm, No. of poles: 11, 135°, Tube

1887690000	LSF-SMT3.5/11/135 1.5R	PCB terminal, Push In, Reflow solder connection, Clamping range, max.: 1.5 mm ² , Pitch: 3.50 mm, No. of poles: 11, 135°, Tape
1885750000	LSF-SMT3.5/12/135 3.5	PCB terminal, Push In, Reflow solder connection, Clamping range, max.: 1.5 mm ² , Pitch: 3.50 mm, No. of poles: 12, 135°, Tube
1887530000	LSF-SMT3.5/12/135 3.5R	PCB terminal, Push In, Reflow solder connection, Clamping range, max.: 1.5 mm ² , Pitch: 3.50 mm, No. of poles: 12, 135°, Tape
1885280000	LSF-SMT3.5/12/135 1.5	PCB terminal, Push In, Reflow solder connection, Clamping range, max.: 1.5 mm ² , Pitch: 3.50 mm, No. of poles: 12, 135°, Tube
1887700000	LSF-SMT3.5/12/135 1.5R	PCB terminal, Push In, Reflow solder connection, Clamping range, max.: 1.5 mm ² , Pitch: 3.50 mm, No. of poles: 12, 135°, Tape
1885760000	LSF-SMT3.5/13/135 3.5	PCB terminal, Push In, Reflow solder connection, Clamping range, max.: 1.5 mm ² , Pitch: 3.50 mm, No. of poles: 13, 135°, Tube
1885290000	LSF-SMT3.5/13/135 1.5	PCB terminal, Push In, Reflow solder connection, Clamping range, max.: 1.5 mm ² , Pitch: 3.50 mm, No. of poles: 13, 135°, Tube
1885770000	LSF-SMT3.5/14/135 3.5	PCB terminal, Push In, Reflow solder connection, Clamping range, max.: 1.5 mm ² , Pitch: 3.50 mm, No. of poles: 14, 135°, Tube
1885300000	LSF-SMT3.5/14/135 1.5	PCB terminal, Push In, Reflow solder connection, Clamping range, max.: 1.5 mm ² , Pitch: 3.50 mm, No. of poles: 14, 135°, Tube
1885780000	LSF-SMT3.5/15/135 3.5	PCB terminal, Push In, Reflow solder connection, Clamping range, max.: 1.5 mm ² , Pitch: 3.50 mm, No. of poles: 15, 135°, Tube
1885310000	LSF-SMT3.5/15/135 1.5	PCB terminal, Push In, Reflow solder connection, Clamping range, max.: 1.5 mm ² , Pitch: 3.50 mm, No. of poles: 15, 135°, Tube
1885790000	LSF-SMT3.5/16/135 3.5	PCB terminal, Push In, Reflow solder connection, Clamping range, max.: 1.5 mm ² , Pitch: 3.50 mm, No. of poles: 16, 135°, Tube
1885320000	LSF-SMT3.5/16/135 1.5	PCB terminal, Push In, Reflow solder connection, Clamping range, max.: 1.5 mm ² , Pitch: 3.50 mm, No. of poles: 16, 135°, Tube
1885800000	LSF-SMT3.5/17/135 3.5	PCB terminal, Push In, Reflow solder connection, Clamping range, max.: 1.5 mm ² , Pitch: 3.50 mm, No. of poles: 17, 135°, Tube
1885330000	LSF-SMT3.5/17/135 1.5	PCB terminal, Push In, Reflow solder connection, Clamping range, max.: 1.5 mm ² , Pitch: 3.50 mm, No. of poles: 17, 135°, Tube
1885810000	LSF-SMT3.5/18/135 3.5	PCB terminal, Push In, Reflow solder connection, Clamping range, max.: 1.5 mm ² , Pitch: 3.50 mm, No. of poles: 18, 135°, Tube
1885340000	LSF-SMT3.5/18/135 1.5	PCB terminal, Push In, Reflow solder connection, Clamping range, max.: 1.5 mm ² , Pitch: 3.50 mm, No. of poles: 18, 135°, Tube
1885820000	LSF-SMT3.5/19/135 3.5	PCB terminal, Push In, Reflow solder connection, Clamping range, max.: 1.5 mm ² , Pitch: 3.50 mm, No. of poles: 19, 135°, Tube
1885350000	LSF-SMT3.5/19/135 1.5	PCB terminal, Push In, Reflow solder connection, Clamping range, max.: 1.5 mm ² , Pitch: 3.50 mm, No. of poles: 19, 135°, Tube
1885830000	LSF-SMT3.5/20/135 3.5	PCB terminal, Push In, Reflow solder connection, Clamping range, max.: 1.5 mm ² , Pitch: 3.50 mm, No. of poles: 20, 135°, Tube
1885360000	LSF-SMT3.5/20/135 1.5	PCB terminal, Push In, Reflow solder connection, Clamping range, max.: 1.5 mm ² , Pitch: 3.50 mm, No. of poles: 20, 135°, Tube
1885840000	LSF-SMT3.5/21/135 3.5	PCB terminal, Push In, Reflow solder connection, Clamping range, max.: 1.5 mm ² , Pitch: 3.50 mm, No. of poles: 21, 135°, Tube
1885370000	LSF-SMT3.5/21/135 1.5	PCB terminal, Push In, Reflow solder connection, Clamping range, max.: 1.5 mm ² , Pitch: 3.50 mm, No. of poles: 21, 135°, Tube
1885850000	LSF-SMT3.5/22/135 3.5	PCB terminal, Push In, Reflow solder connection, Clamping range, max.: 1.5 mm ² , Pitch: 3.50 mm, No. of poles: 22, 135°, Tube
1885380000	LSF-SMT3.5/22/135 1.5	PCB terminal, Push In, Reflow solder connection, Clamping range, max.: 1.5 mm ² , Pitch: 3.50 mm, No. of poles: 22, 135°, Tube
1885860000	LSF-SMT3.5/23/135 3.5	PCB terminal, Push In, Reflow solder connection, Clamping range, max.: 1.5 mm ² , Pitch: 3.50 mm, No. of poles: 23, 135°, Tube

1885390000	LSF-SMT3.50/23/135 1.5	PCB terminal, Push In, Reflow solder connection, Clamping range, max.: 1.5 mm ² , Pitch: 3.50 mm, No. of poles: 23, 135°, Tube
1885870000	LSF-SMT3.50/24/135 3.5	PCB terminal, Push In, Reflow solder connection, Clamping range, max.: 1.5 mm ² , Pitch: 3.50 mm, No. of poles: 24, 135°, Tube
1885400000	LSF-SMT3.50/24/135 1.5	PCB terminal, Push In, Reflow solder connection, Clamping range, max.: 1.5 mm ² , Pitch: 3.50 mm, No. of poles: 24, 135°, Tube