



Chipsmall Limited consists of a professional team with an average of over 10 year of expertise in the distribution of electronic components. Based in Hongkong, we have already established firm and mutual-benefit business relationships with customers from,Europe,America and south Asia,supplying obsolete and hard-to-find components to meet their specific needs.

With the principle of “Quality Parts,Customers Priority,Honest Operation,and Considerate Service”,our business mainly focus on the distribution of electronic components. Line cards we deal with include Microchip,ALPS,ROHM,Xilinx,Pulse,ON,Everlight and Freescale. Main products comprise IC,Modules,Potentiometer,IC Socket,Relay,Connector.Our parts cover such applications as commercial,industrial, and automotives areas.

We are looking forward to setting up business relationship with you and hope to provide you with the best service and solution. Let us make a better world for our industry!



Contact us

Tel: +86-755-8981 8866 Fax: +86-755-8427 6832

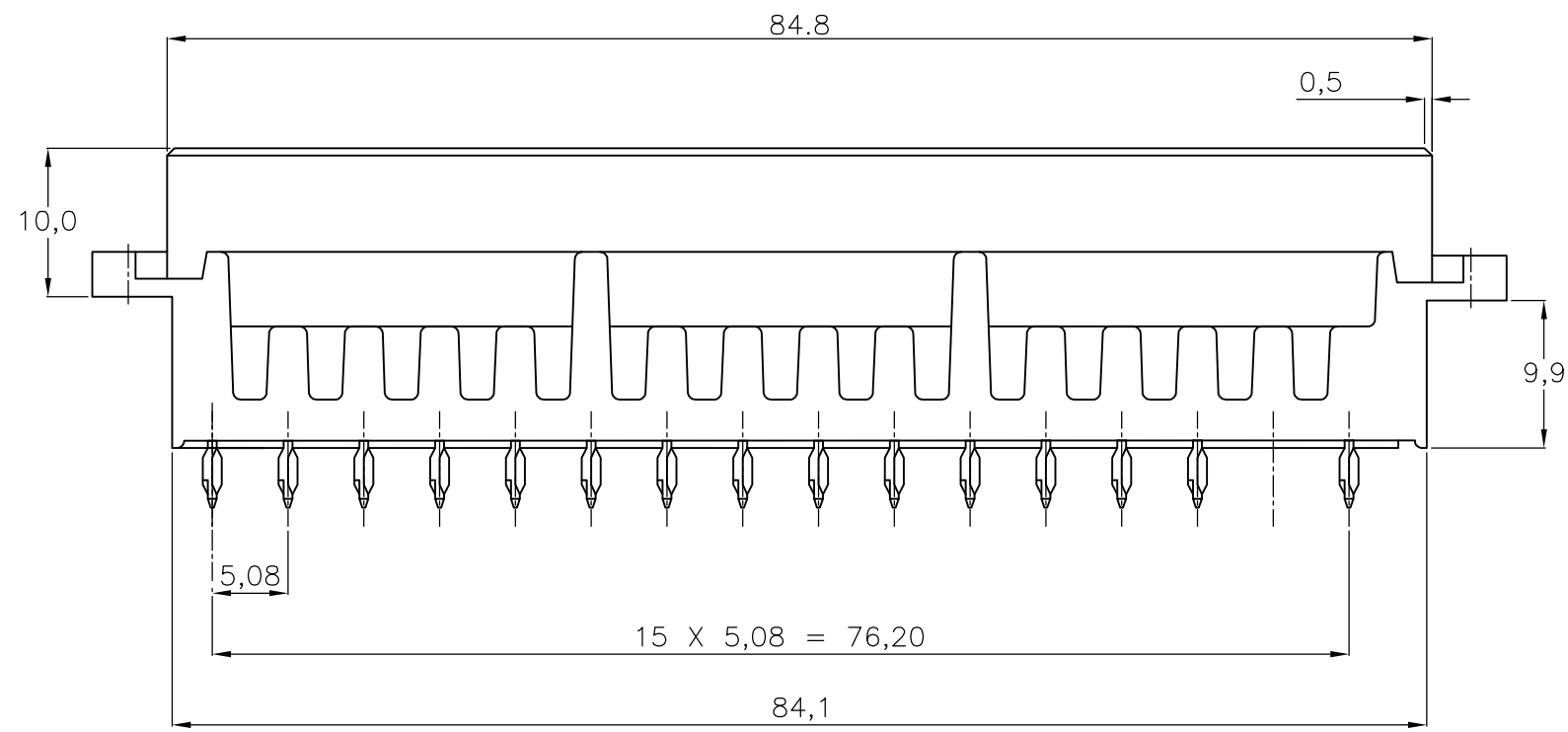
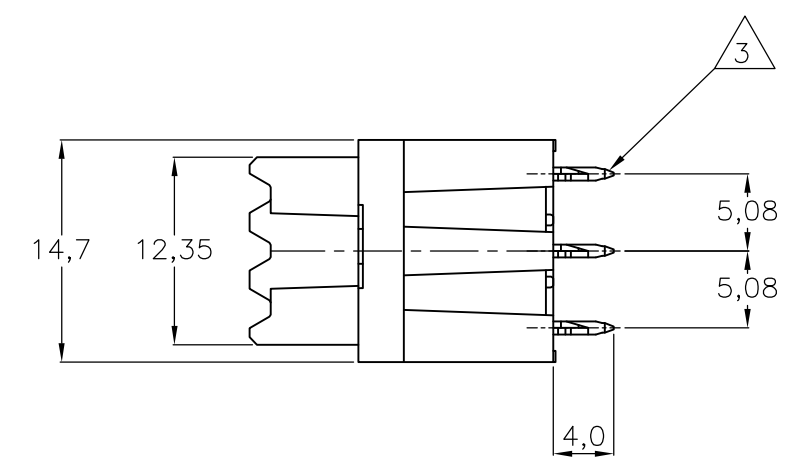
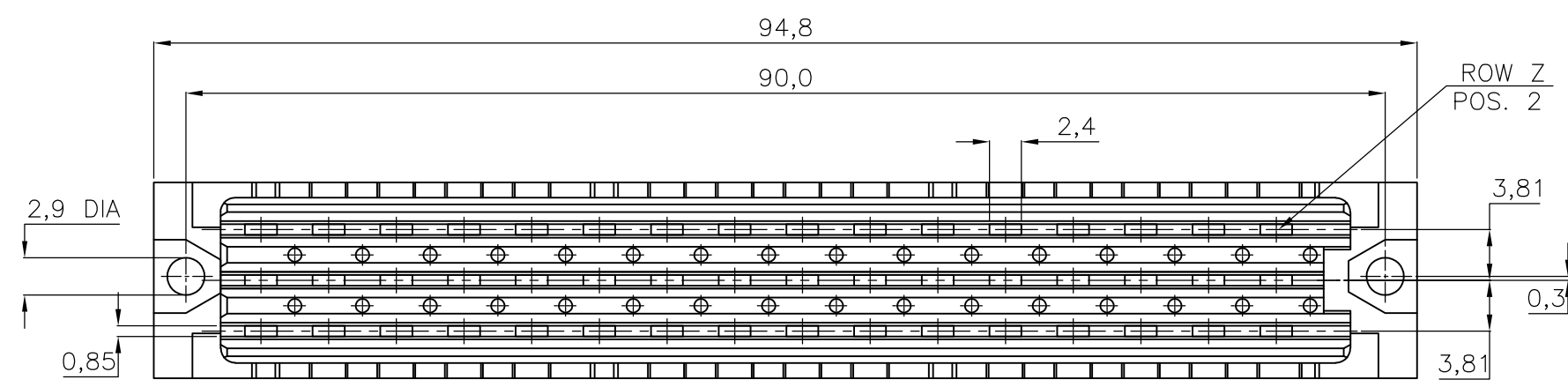
Email & Skype: info@chipsmall.com Web: www.chipsmall.com

Address: A1208, Overseas Decoration Building, #122 Zhenhua RD., Futian, Shenzhen, China



THIS DRAWING IS UNPUBLISHED. RELEASED FOR PUBLICATION
 © COPYRIGHT - By - ALL RIGHTS RESERVED.

LOC	DIST	REVISIONS			
P	LTR	DESCRIPTION	DATE	DWN	APVD
H	-	B	REVISED PER ECO-15-005333	07JUL2015	AP RP



NOTES:

- 1 MATERIAL : - HOUSING : POLYESTER G.F.
COLOUR : GREY.
- CONTACTS : PHOSPHORBRONZE.
- 2 FINISH : -1: EIC 60603-2 PERFORMANCE LEVEL I OVER NICKEL
IN CONTACT AREA.
AT POST AREA 2,5µm Sn OVER 1,25µm NI.
-4: EIC 60603-2 PERFORMANCE LEVEL II OVER NICKEL
IN CONTACT AREA.
AT POST AREA 2,5µm Sn OVER 1,25µm NI.
- 3 FOR P.C.B.-THICKNESS 1,6-2,4

P.C.B. HOLE DIM. ACTION PIN	
DRILLED HOLE	: 1,15 ± 0,025 mm
FIN. HOLE	: 0,94 to 1,09 mm
AFTER REFLOW	: 0,91 to 1,09 mm
Cu-thks	: 0,025 to 0,075 mm
SnPb-thks	: 0,004 to 0,010 mm

OBSOLETE	SEE NOTE 2	SEE NOTE 1	188826-4
	FINISH	MATERIAL	PARTNUMBER

ROW	z	b	d															
POS	32	30	28	26	24	22	20	18	16	14	12	10	8	6	4	2	X	
	X	X	X	X	X	X	X	X	X	X	X	X	X	X	X	X	X	

AN ASTERISK „X” DENOTES A CONTACT.

DIMENSIONS:		TOLERANCES UNLESS OTHERWISE SPECIFIED:	
mm			
		0 PLC	± -
		1 PLC	± -
		2 PLC	± -
		3 PLC	± -
		4 PLC	± -
		ANGLES	± -
MATERIAL		FINISH	
-		-	

THIS DRAWING IS A CONTROLLED DOCUMENT.				DWN		180CT95	
				J.GIBBELS			
				CHK		-	
				R.V.LOKVEN			
				APVD			
				PRODUCT SPEC		NAME	
				-		31 POS. TYPE F FEMALE	
				APPLICATION SPEC		B.T.B. - A.P. CONNECTOR.	
		SIZE	CAGE CODE	DRAWING NO		RESTRICTED TO	
		A3	00779	C-188826		-	
CUSTOMER DRAWING				SCALE	NTS	SHEET	1 OF 1
						REV	B