



Chipsmall Limited consists of a professional team with an average of over 10 year of expertise in the distribution of electronic components. Based in Hongkong, we have already established firm and mutual-benefit business relationships with customers from,Europe,America and south Asia,supplying obsolete and hard-to-find components to meet their specific needs.

With the principle of “Quality Parts,Customers Priority,Honest Operation,and Considerate Service”,our business mainly focus on the distribution of electronic components. Line cards we deal with include Microchip,ALPS,ROHM,Xilinx,Pulse,ON,Everlight and Freescale. Main products comprise IC,Modules,Potentiometer,IC Socket,Relay,Connector.Our parts cover such applications as commercial,industrial, and automotives areas.

We are looking forward to setting up business relationship with you and hope to provide you with the best service and solution. Let us make a better world for our industry!



Contact us

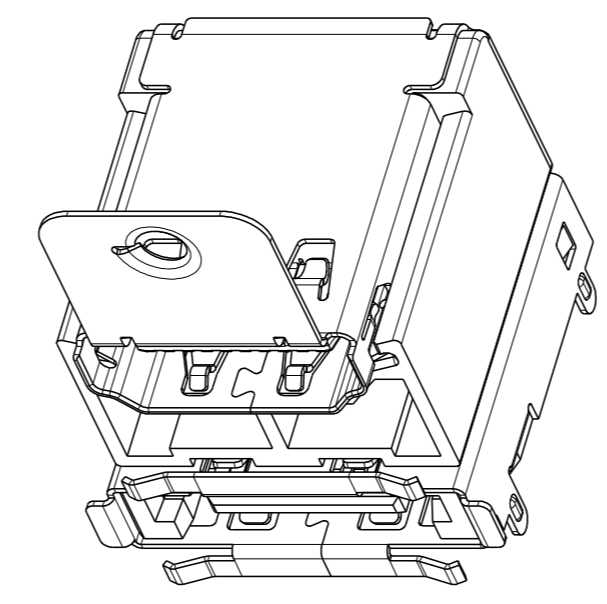
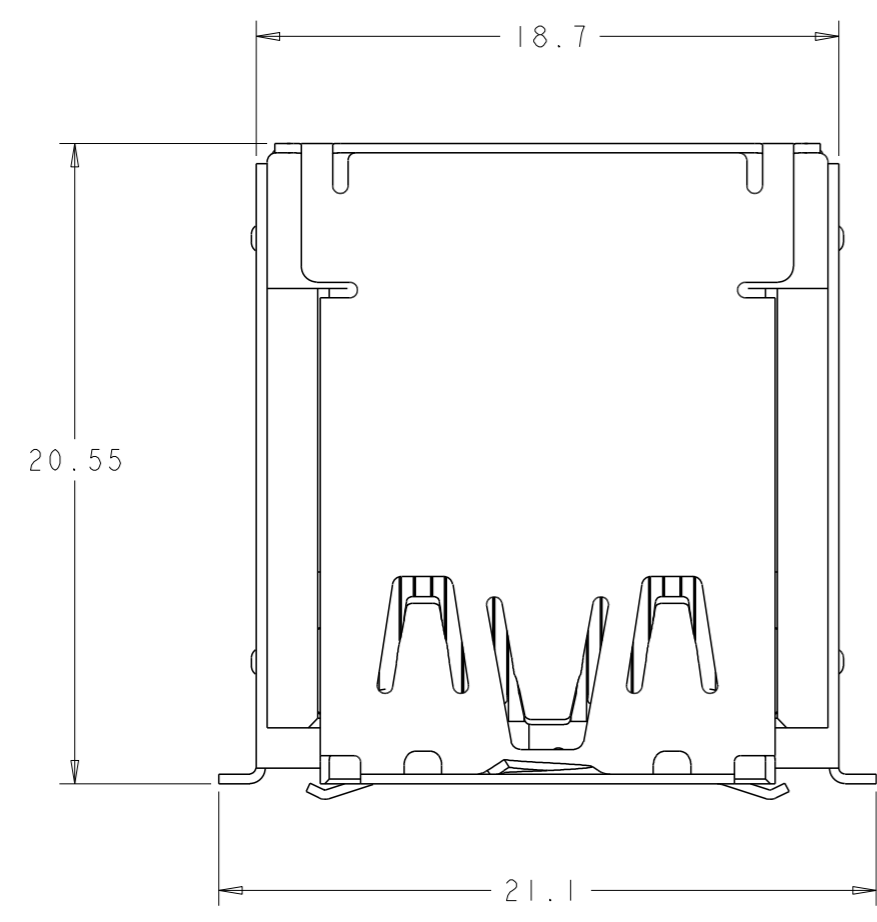
Tel: +86-755-8981 8866 Fax: +86-755-8427 6832

Email & Skype: info@chipsmall.com Web: www.chipsmall.com

Address: A1208, Overseas Decoration Building, #122 Zhenhua RD., Futian, Shenzhen, China

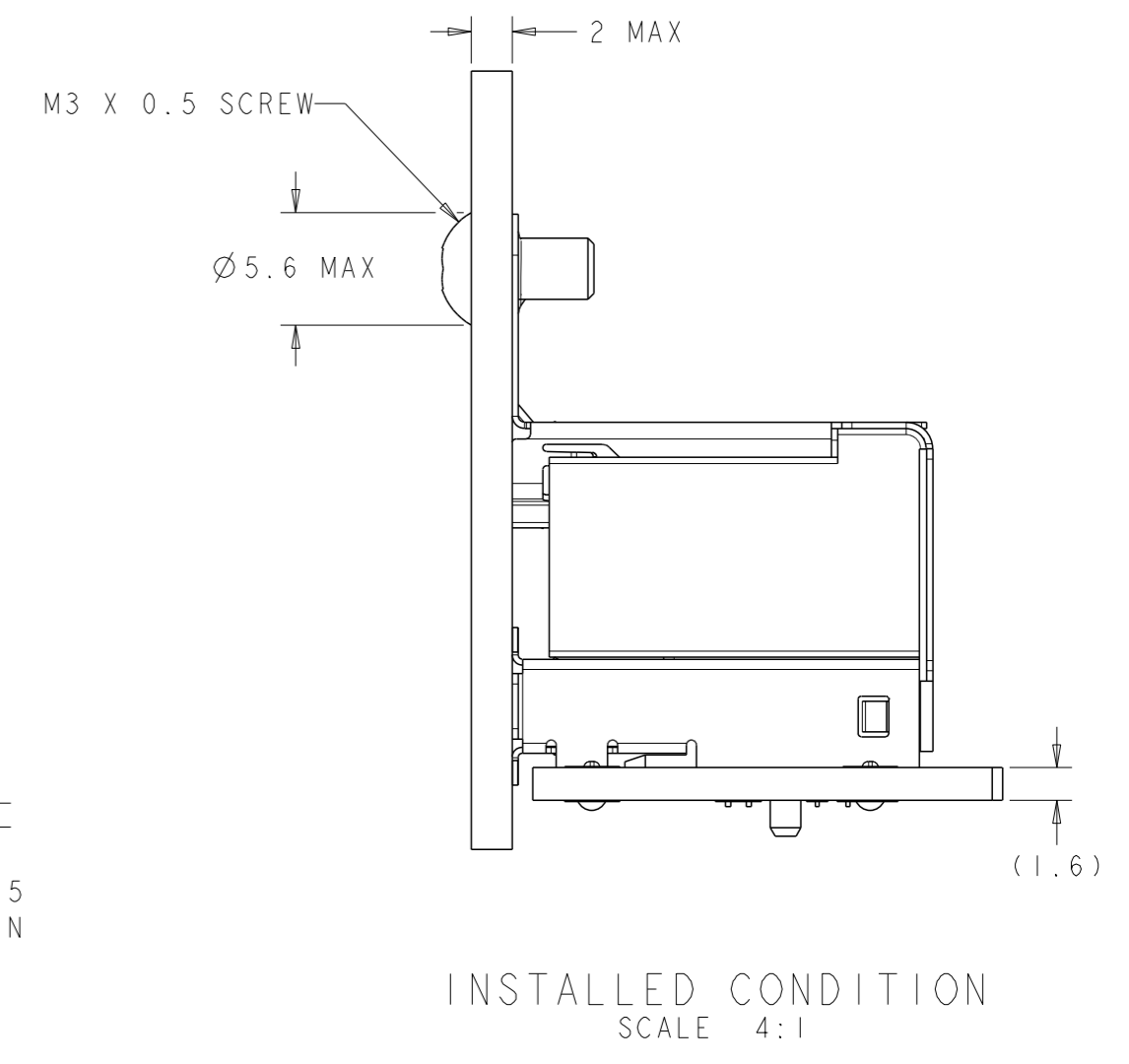
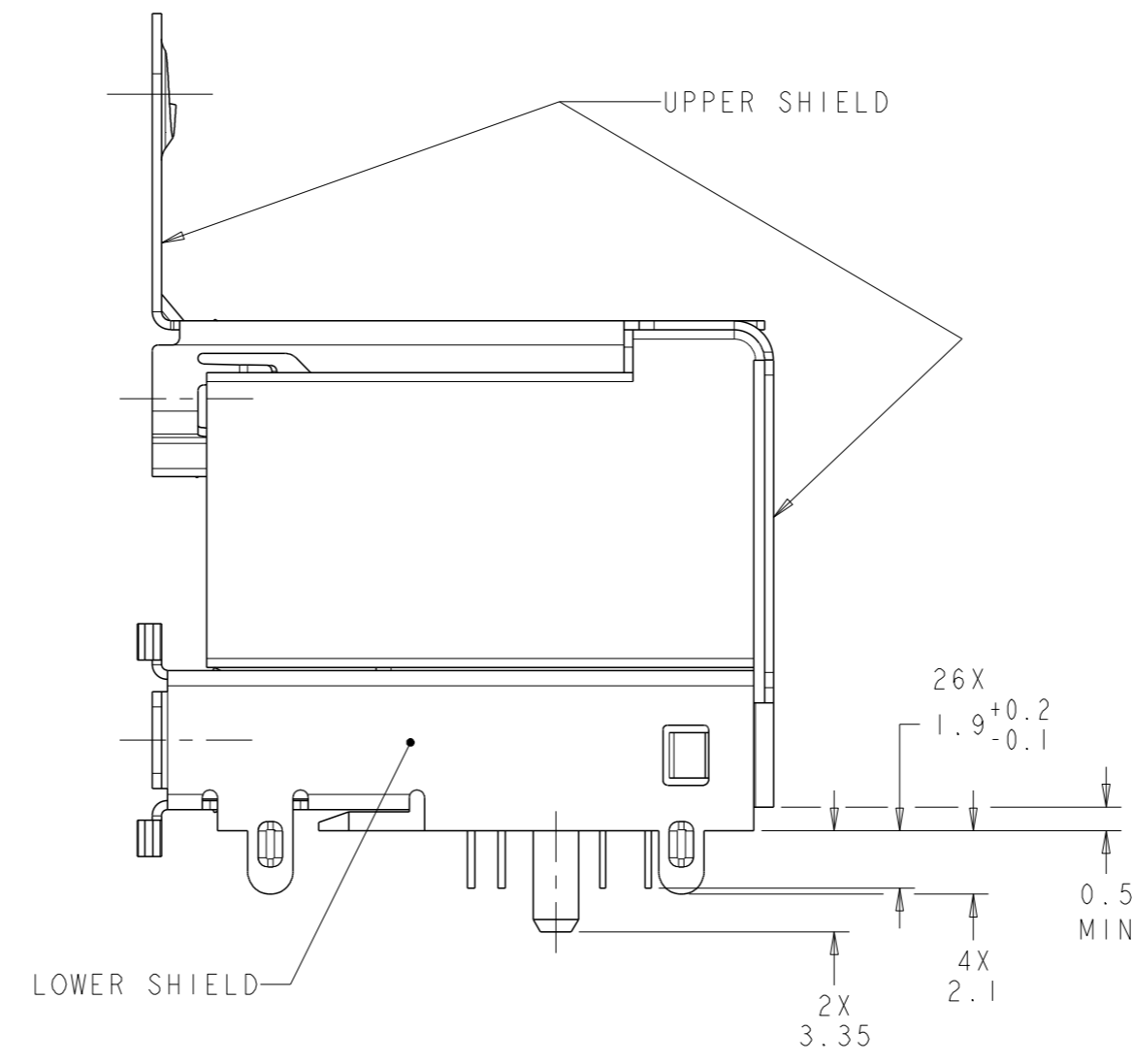
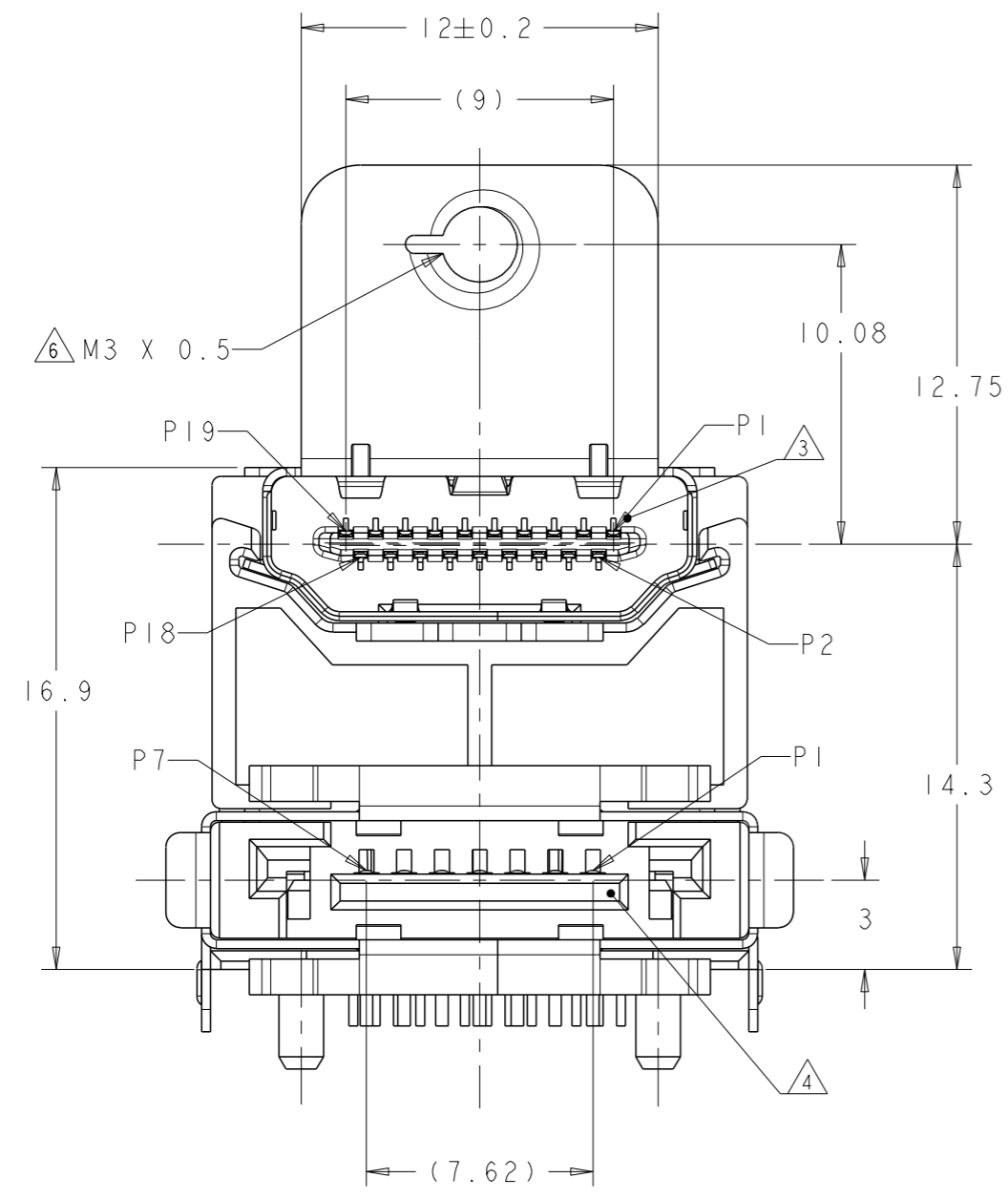


LOC		DIST		REVISIONS				
GP	00	P	LYR	DESCRIPTION	DATE	OWN	APVD	
		F		REVISED PER ECO-08-030380	05DEC08	JDP	SLB	
		G		OBSOLETE PER ECO-12-000957	16JAN2012	F.L	S.Y	



SCALE 4:1

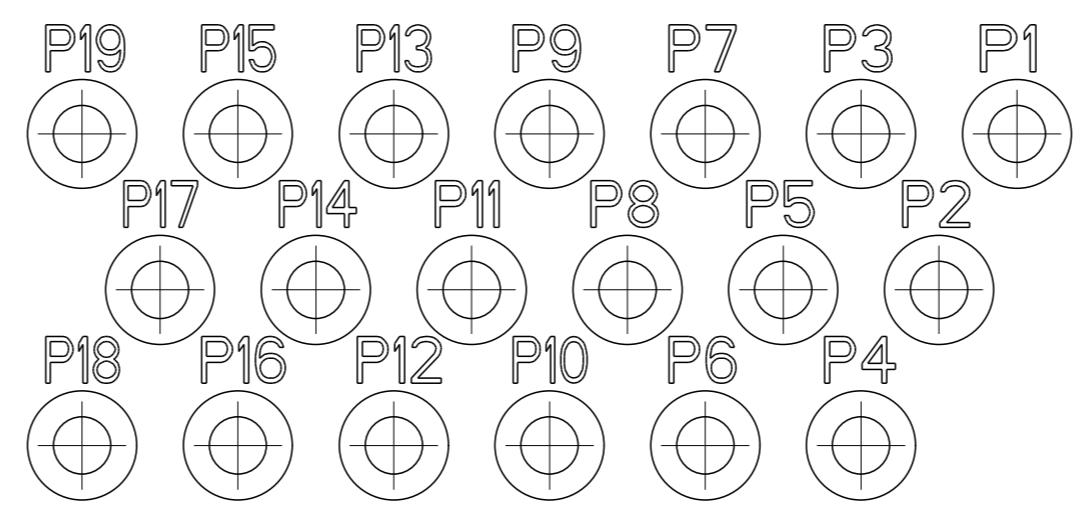
- △ MATERIALS:**
 HOUSING: HIGH TEMP THERMOPLASTIC, UL94V-0, BLACK.
 CONTACTS: COPPER ALLOY
 SHIELDS: STAINLESS STEEL
- △ FINISH:**
 CONTACTS:
 GOLD FLASH OVER
 PALLADIUM-NICKEL PLATE, 0.3µm MIN TOTAL ON THE MATING SURFACE,
 2µm MIN TIN PLATE ON THE SOLDER-TAIL,
 2µm MIN NICKEL UNDERPLATE ON THE ENTIRE CONTACT.
 OR
 0.3µm MIN GOLD PLATE ON THE MATING SURFACE,
 2µm MIN TIN PLATE ON THE SOLDER-TAIL,
 2µm MIN NICKEL UNDERPLATE ON THE ENTIRE CONTACT.
- LOWER SHIELD:**
 0.75µm MIN TIN OVER
 0.8µm MIN NICKEL UNDERPLATE
- △ INTERFACE DIMENSIONS ARE PER HDMI SPECIFICATION VERSION 1.3a.**
△ INTERFACE DIMENSIONS ARE PER SERIAL ATA REVISION 2.5.
 5. WAVE SOLDER COMPATIBLE PER 109-202, CONDITION B,
 NO CLEAN FLUX IS RECOMMENDED.
△ APPLIED TORQUE MUST NOT EXCEED 4 kg-cm (3.47 in-lbs).



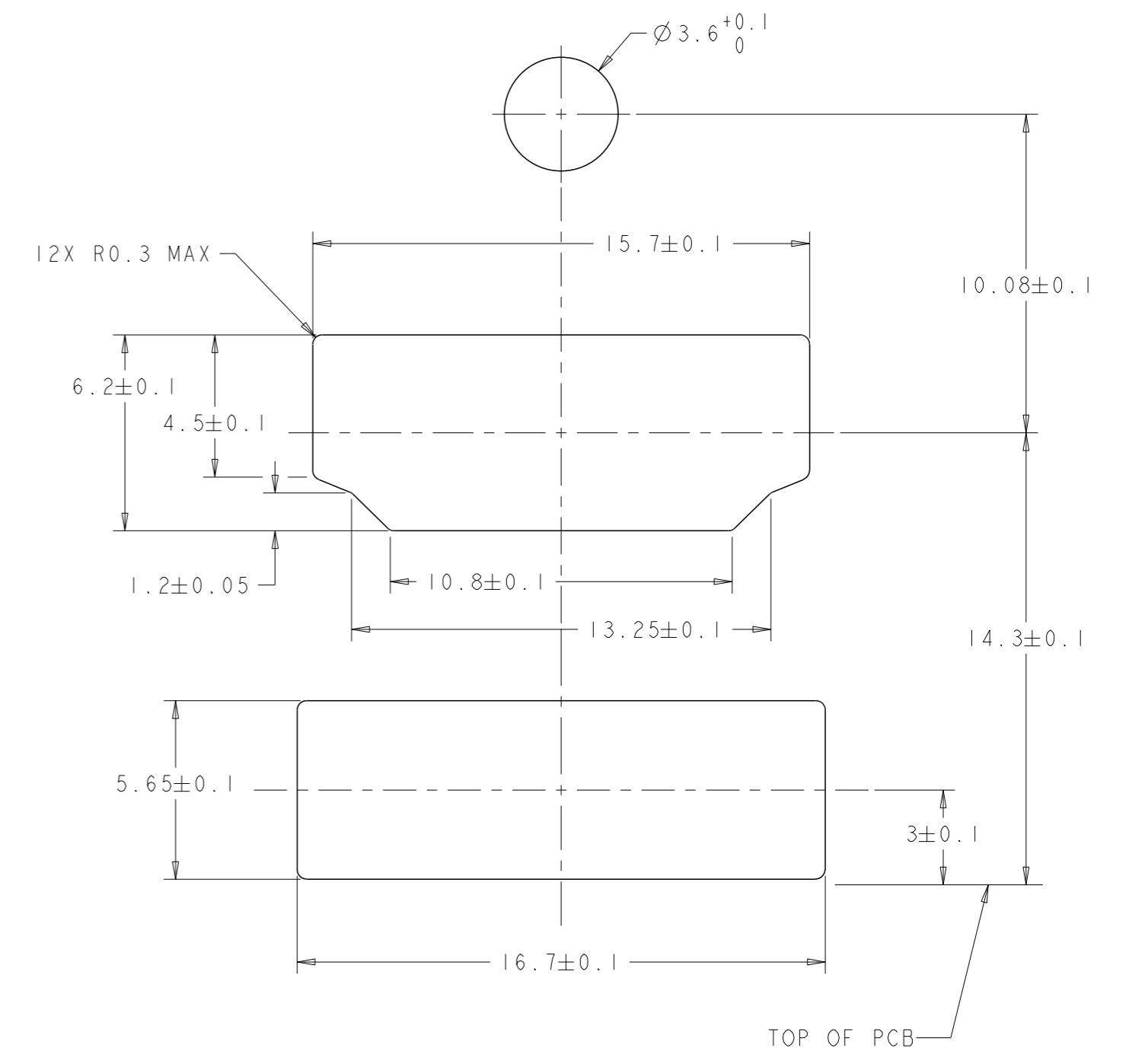
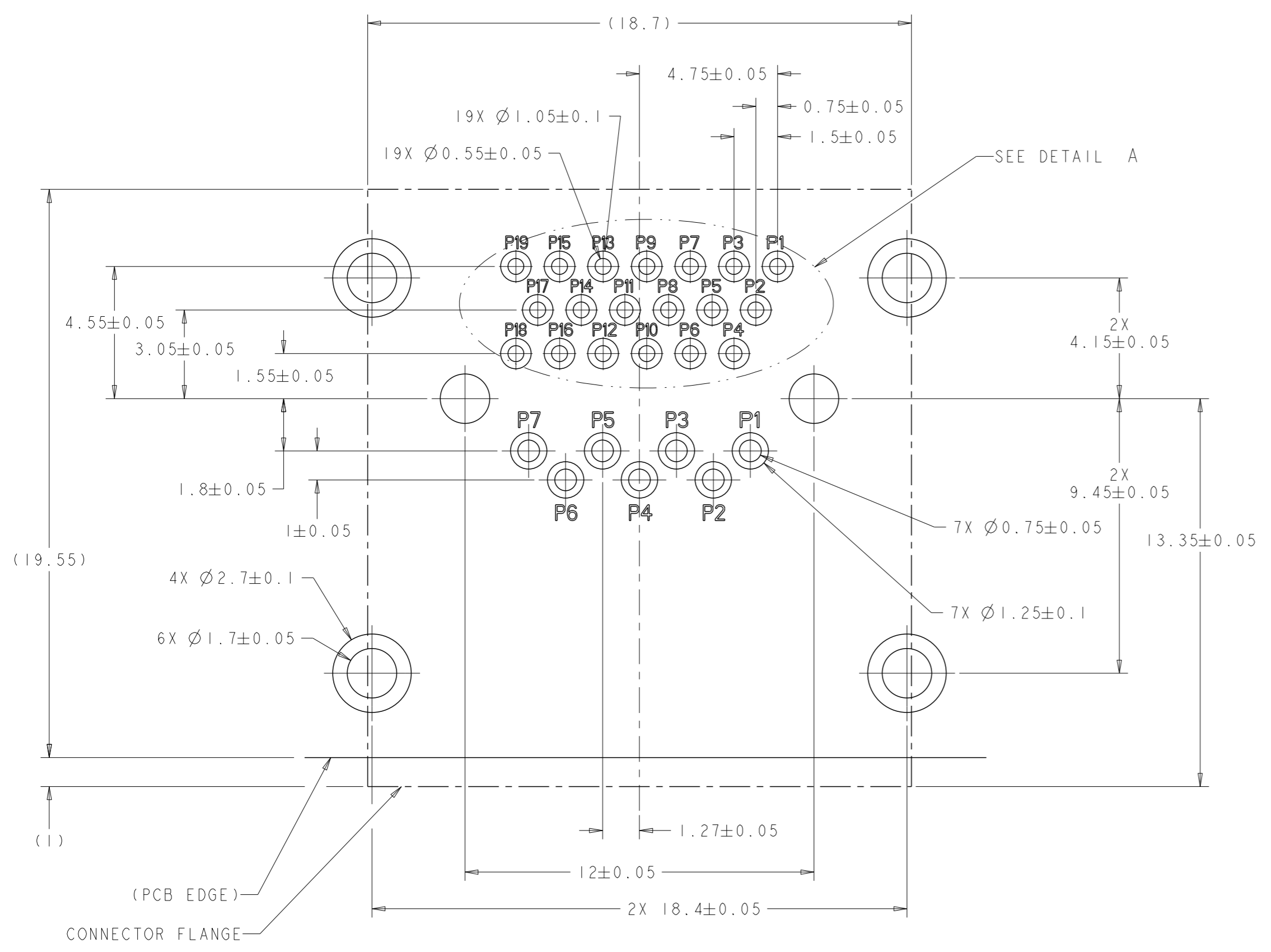
Ⓞ OBSOLETE 1888540-1
PART NO

THIS DRAWING IS A CONTROLLED DOCUMENT.		OWN HAMNER	29JUN2006	TE Connectivity HDMI/E-SATA STACKED CONNECTOR ASSEMBLY		
DIMENSIONS:		CHK McCLELLAN	29JUN2006			
TOLERANCES UNLESS OTHERWISE SPECIFIED:		APVD McCLELLAN	29JUN2006			
mm		NAME McCLELLAN	PRODUCT SPEC			
0 PLC	±0.3	APPLICATION SPEC	SIZE	CAGE CODE	DRAWING NO	RESTRICTED TO
1 PLC	±0.3	WEIGHT	A1	00779	1888540	
2 PLC	±0.3	CUSTOMER DRAWING	SCALE	6:1	SHEET	1 OF 2
3 PLC	±0.3					REV
4 PLC	±0.3					G
ANGLES	±2°					
FINISH						

LOC	DIST	REVISIONS					
GP	00	P	LTR	DESCRIPTION	DATE	OWN	APVD
		-	-	SEE SHEET 1	-	-	-



DETAIL A
SCALE 20:1



RECOMMENDED PANEL CUTOUT
SCALE 8:1

PCB LAYOUT
SHOWN FROM CONNECTOR SIDE
TOLERANCES ARE NON-CUMULATIVE
SCALE 10:1

THIS DRAWING IS A CONTROLLED DOCUMENT.		OWN HAMNER	29JUN2006		TE Connectivity
DIMENSIONS: mm		CHK McCLELLAN	29JUN2006		HDMI/E-SATA STACKED CONNECTOR ASSEMBLY
TOLERANCES UNLESS OTHERWISE SPECIFIED:		APVD McCLELLAN	29JUN2006	NAME	
0 PLC	±0.3	PRODUCT SPEC		SIZE CASE CODE DRAWING NO	
1 PLC	±0.3	APPLICATION SPEC		RESTRICTED TO	
2 PLC	±0.3	MATERIAL		A100779C=1888540	
3 PLC	±0.3	FINISH		SCALE 6:1 SHEET 2 OF 2 REV G	
4 PLC	±0.3	CUSTOMER DRAWING		WEIGHT	