



Chipsmall Limited consists of a professional team with an average of over 10 year of expertise in the distribution of electronic components. Based in Hongkong, we have already established firm and mutual-benefit business relationships with customers from,Europe,America and south Asia,supplying obsolete and hard-to-find components to meet their specific needs.

With the principle of “Quality Parts,Customers Priority,Honest Operation,and Considerate Service”,our business mainly focus on the distribution of electronic components. Line cards we deal with include Microchip,ALPS,ROHM,Xilinx,Pulse,ON,Everlight and Freescale. Main products comprise IC,Modules,Potentiometer,IC Socket,Relay,Connector.Our parts cover such applications as commercial,industrial, and automotives areas.

We are looking forward to setting up business relationship with you and hope to provide you with the best service and solution. Let us make a better world for our industry!



Contact us

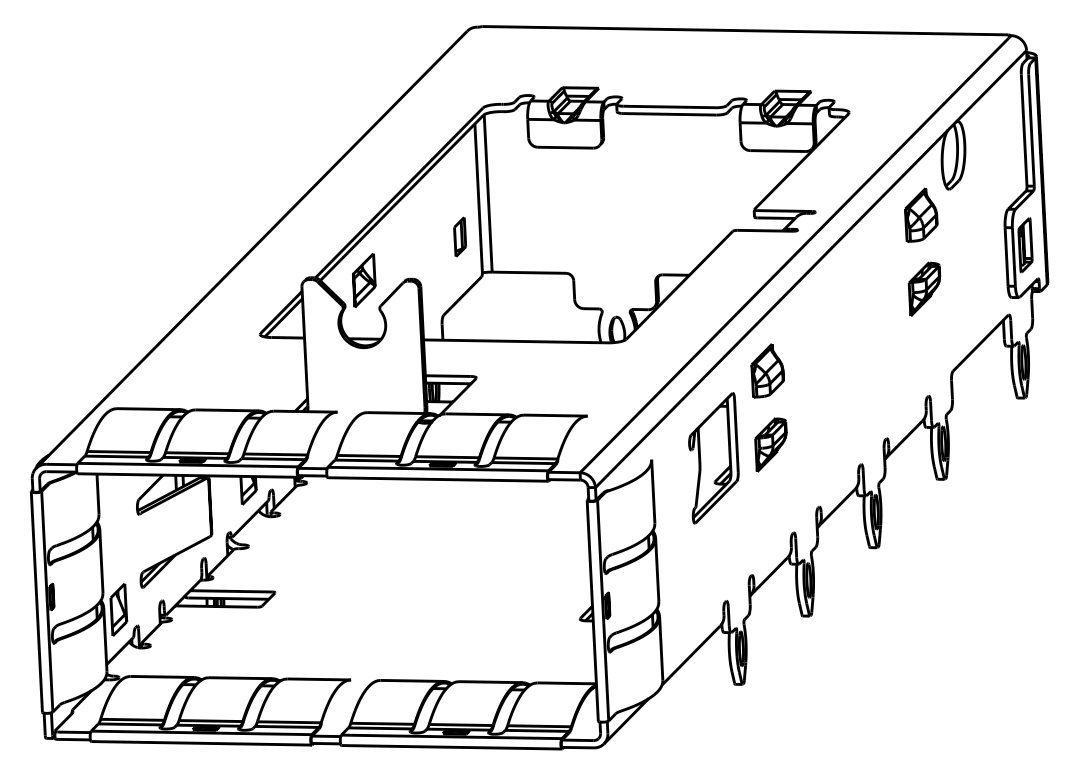
Tel: +86-755-8981 8866 Fax: +86-755-8427 6832

Email & Skype: info@chipsmall.com Web: www.chipsmall.com

Address: A1208, Overseas Decoration Building, #122 Zhenhua RD., Futian, Shenzhen, China

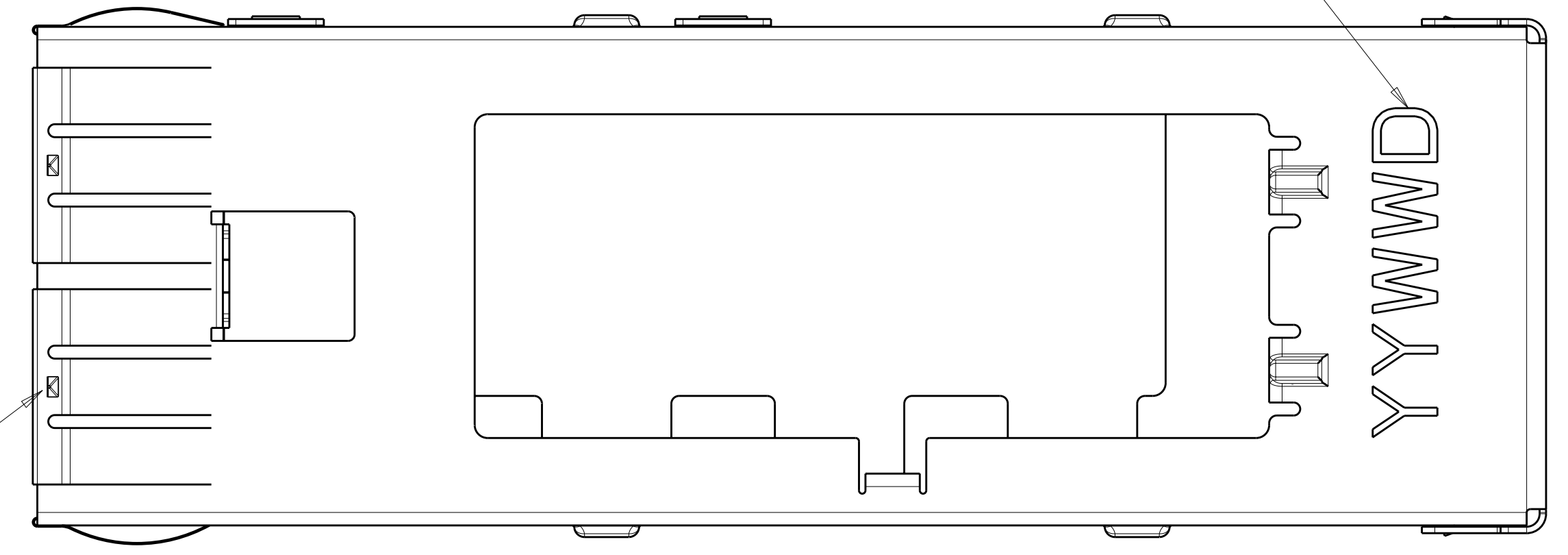


LOC	DIST	REVISIONS					
GP	00	P	LTR	DESCRIPTION	DATE	DWN	APVD
		B		REV PER ECO-09-020440	11SEP2009	CR	JP

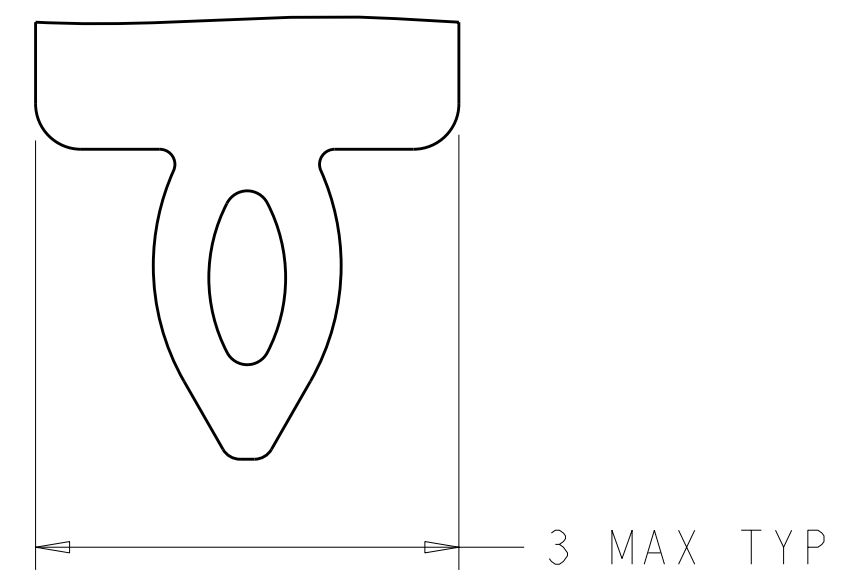
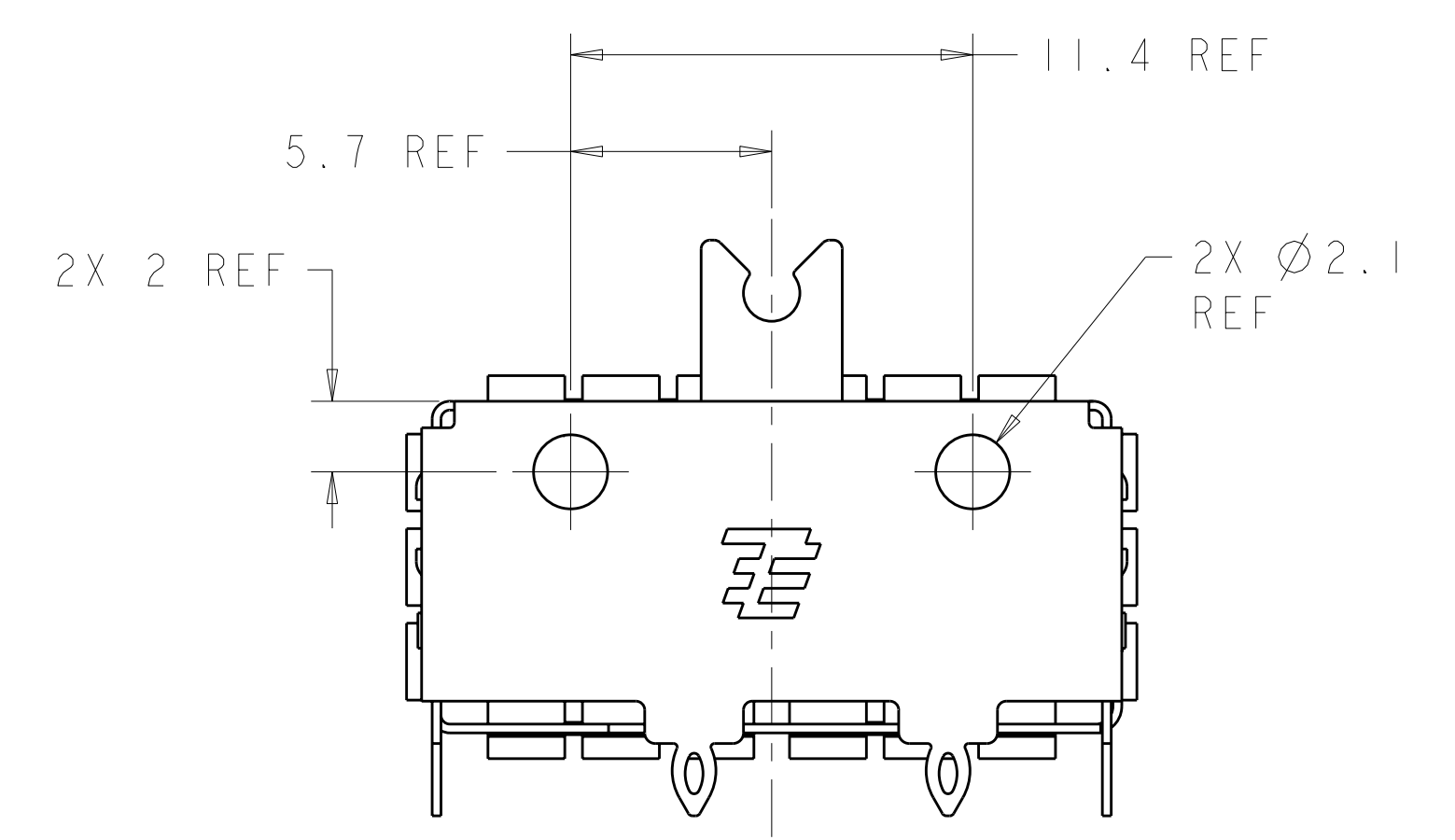
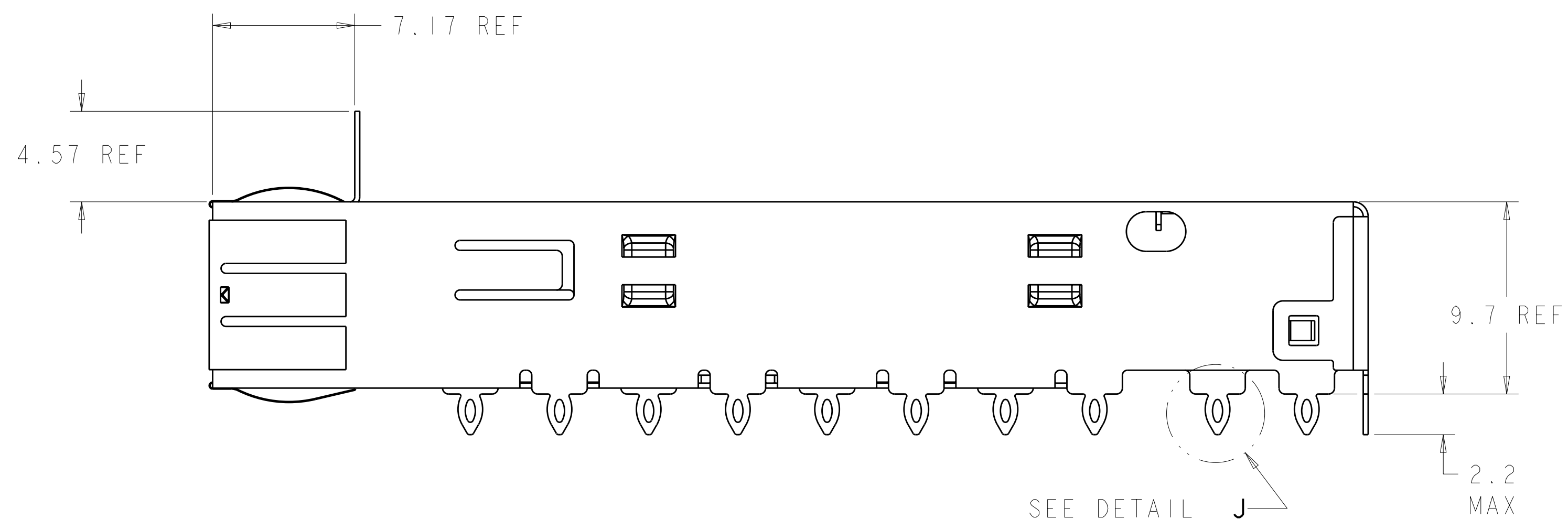
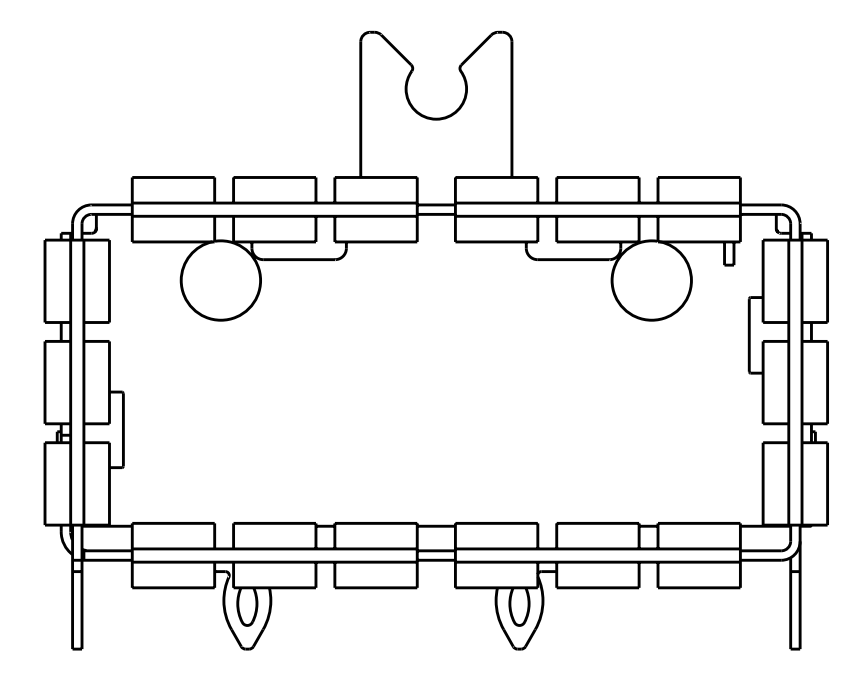


ISOMETRIC VIEW
SCALE 4:1

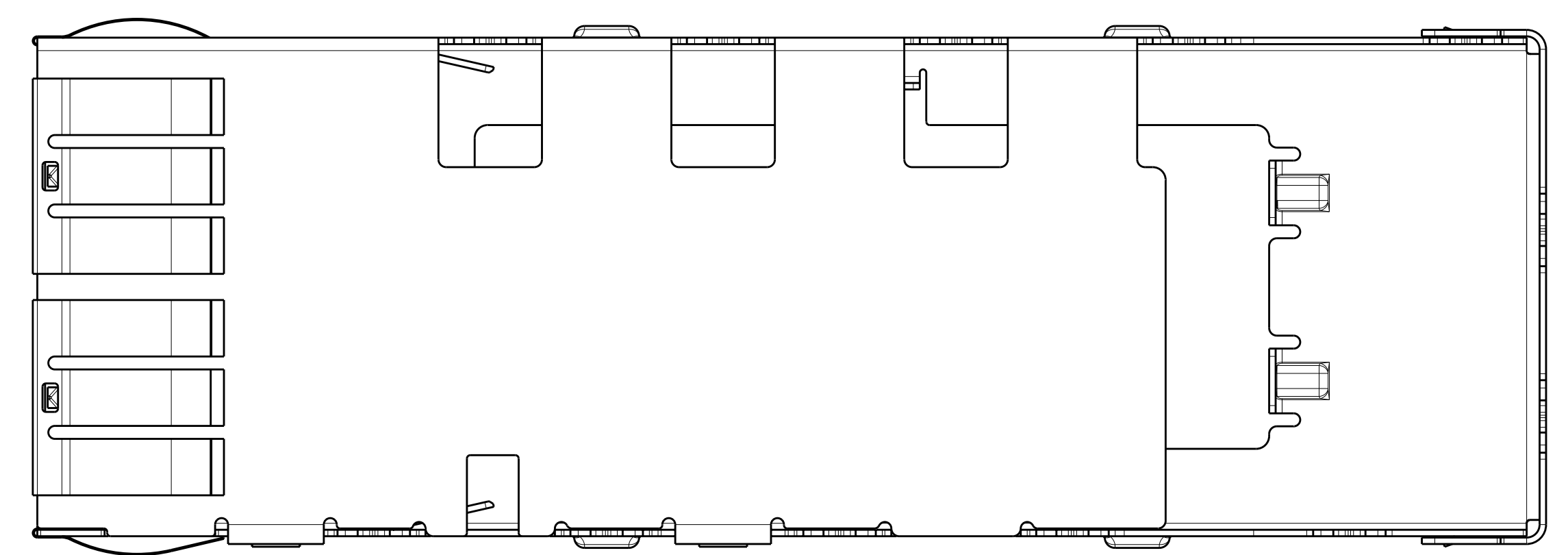
Sn42Bi58 SOLDER
6 PLACES



- △ CAGE MATERIAL: 0.25 THICK NICKEL SILVER.
SPRING MATERIAL: COPPER ALLOY.
- △ MINIMUM PITCH DIMENSION.
- 3. MATES WITH QSFP MSA COMPATIBLE TRANSCEIVER.
- △ REFERENCE APPLICATION SPEC 114-13217 FOR RECOMMENDED DRILL HOLE DIAMETER AND PLATING THICKNESS.
- △ DATUMS AND BASIC DIMENSIONS ESTABLISHED BY CUSTOMER.
- 6. MINIMUM PC BOARD THICKNESS:
SINGLE SIDED = 1.45mm
DOUBLE SIDED = 2.2mm
- 7. MAX HEIGHT OF LED OFF PC BOARD NOT TO EXCEED 1.7 mm.
- △ DATUM -A- IS TOP SURFACE OF HOST BOARD.
- △ SURFACE TRACES PERMITTED WITHIN THIS AREA EXCEPT WHERE CAGE STANDOFFS, SHOWN IN DETAIL J, CONTACT PC BOARD.
- △ DATE CODE (YYWWD) MARKED APPROXIMATELY AS SHOWN.
- △ SPRING FINISH: 0.8µm MIN TIN OVER 0.8µm MIN NICKEL
NON-PLATED EDGES PERMISSIBLE.
- 12. PRODUCT HAS NOT COMPLETED QUALIFICATION TESTING.



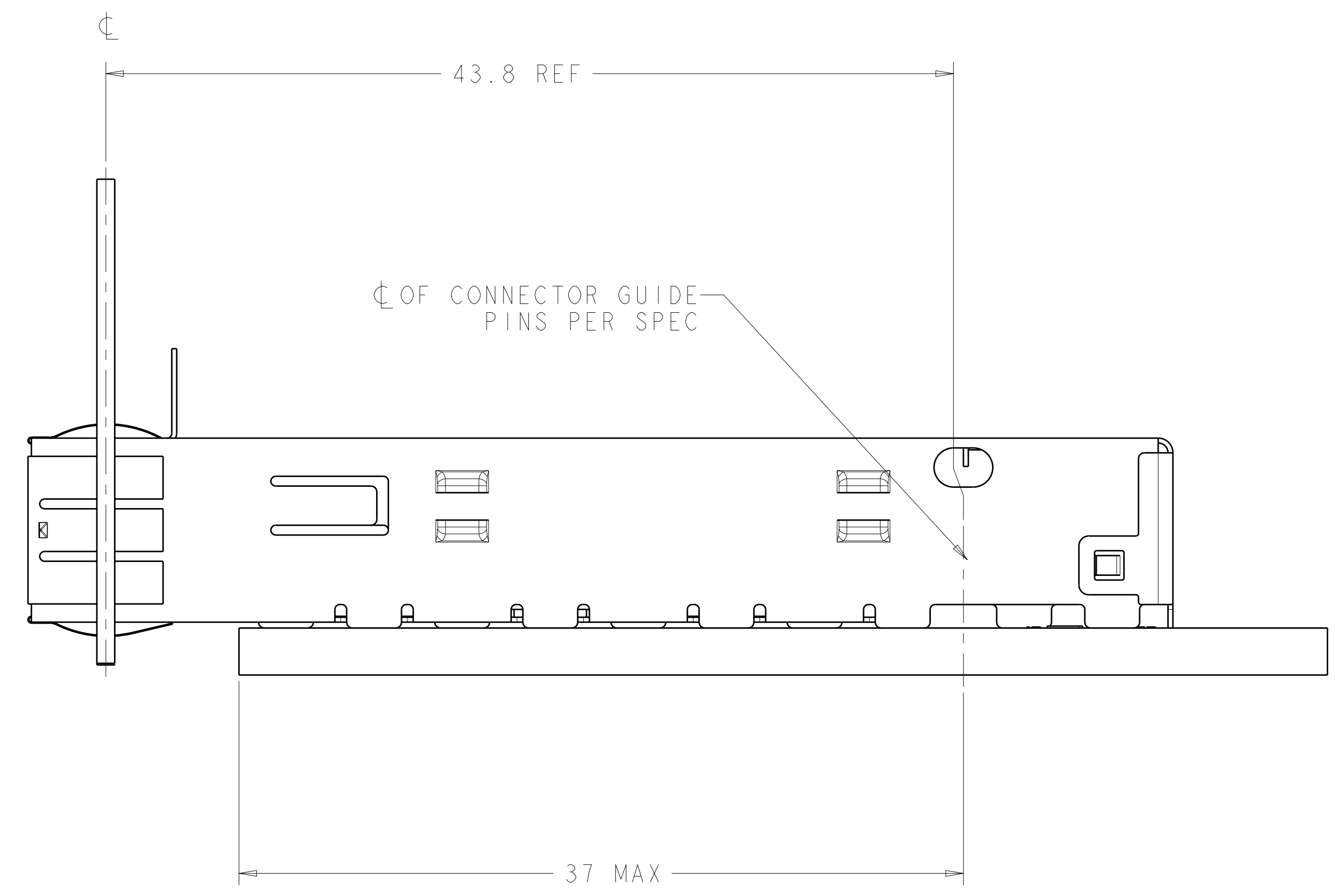
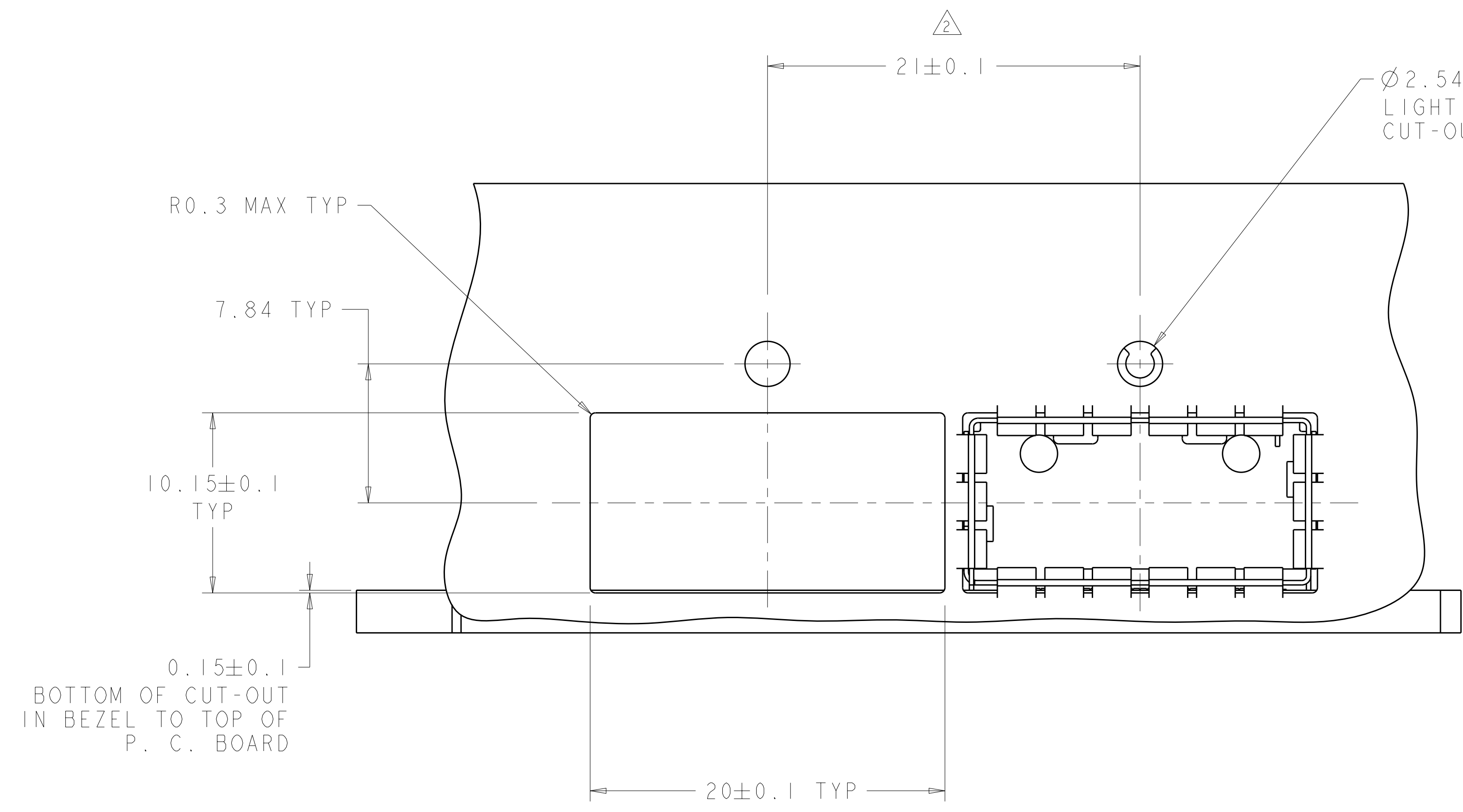
DETAIL J
SCALE 20:1



1888674-1
PART NUMBER

DIMENSIONS: mm 		TOLERANCES UNLESS OTHERWISE SPECIFIED: 0 PLC ± 1 PLC ±0.25 2 PLC ±0.13 3 PLC ± 4 PLC ± ANGLES ± FINISH		DWN B. MCMASTER 04OCT06 CHK E. J. BRIGHT 04OCT06 APVD E. J. BRIGHT 04OCT06 PRODUCT SPEC 108-2286 APPLICATION SPEC 114-13217 WEIGHT CUSTOMER DRAWING		Tyco Electronics Harrisburg, PA 17105-3608 NAME CAGE ASSEMBLY, THRU BEZEL, QSFP, WITH LIGHTPIPE BRACKET SIZE CAGE CODE DRAWING NO. RESTRICTED TO A100779C=1888674 SCALE 5:1 SHEET 1 OF 3 REV B	
-----------------------	--	---	--	---	--	---	--

LOC	DIST	REV	DATE	DWN	APVD
GP	00				



RECOMMENDED BEZEL CUTOUT
AND LOCATION

<small>THIS DRAWING IS UNPUBLISHED. RELEASED FOR PUBLICATION 2007. THIS IS SUBJECT TO CHANGE WITHOUT NOTICE. THE USER SHALL BE RESPONSIBLE FOR VERIFYING THE DIMENSIONS AND TOLERANCES OF THE PARTS AND ASSEMBLIES. CONTACT THE SUPPLIER FOR THE LATEST REVISION.</small>		DWN: B. MCMASTER 04OCT06 CHK: E. J. BRIGHT 04OCT06 APVD: E. J. BRIGHT 04OCT06	Tyco Electronics Harrisburg, PA 17105-3608
DIMENSIONS: mm 	TOLERANCES UNLESS OTHERWISE SPECIFIED: 0 PLC ± 1 PLC ±0.25 2 PLC ±0.13 3 PLC ± 4 PLC ± ANGLES ± FINISH	NAME: CAGE ASSEMBLY, THRU BEZEL, QSFP, WITH LIGHTPIPE BRACKET	SIZE: CAGE CODE DRAWING NO A1100779C-1888674
MATERIAL	FINISH	WEIGHT: CUSTOMER DRAWING	RESTRICTED TO: SCALE: 5:1 SHEET 2 OF 3 REV B

