



Chipsmall Limited consists of a professional team with an average of over 10 year of expertise in the distribution of electronic components. Based in Hongkong, we have already established firm and mutual-benefit business relationships with customers from,Europe,America and south Asia,supplying obsolete and hard-to-find components to meet their specific needs.

With the principle of "Quality Parts,Customers Priority,Honest Operation,and Considerate Service",our business mainly focus on the distribution of electronic components. Line cards we deal with include Microchip,ALPS,ROHM,Xilinx,Pulse,ON,Everlight and Freescale. Main products comprise IC,Modules,Potentiometer,IC Socket,Relay,Connector.Our parts cover such applications as commercial,industrial, and automotives areas.

We are looking forward to setting up business relationship with you and hope to provide you with the best service and solution. Let us make a better world for our industry!



Contact us

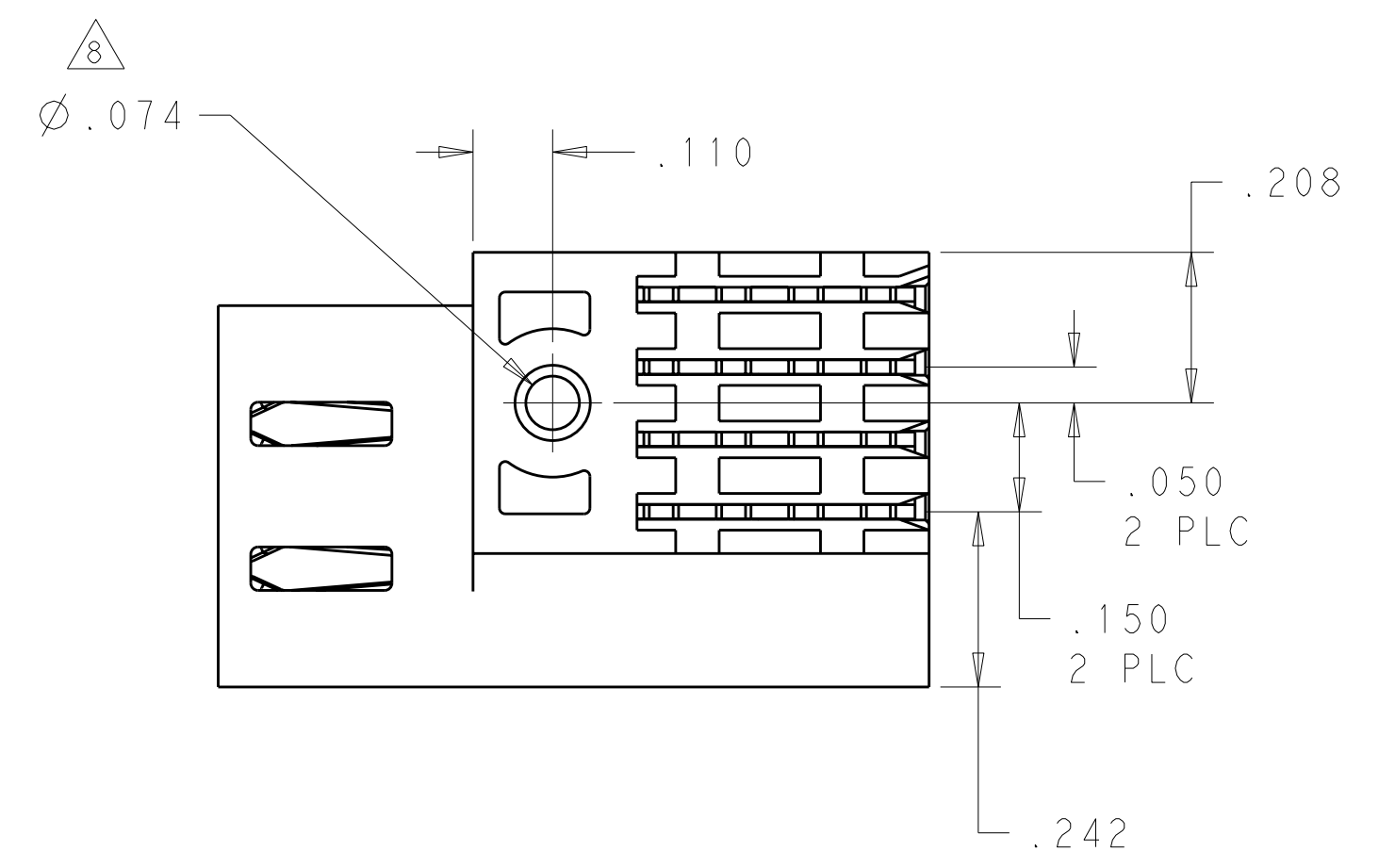
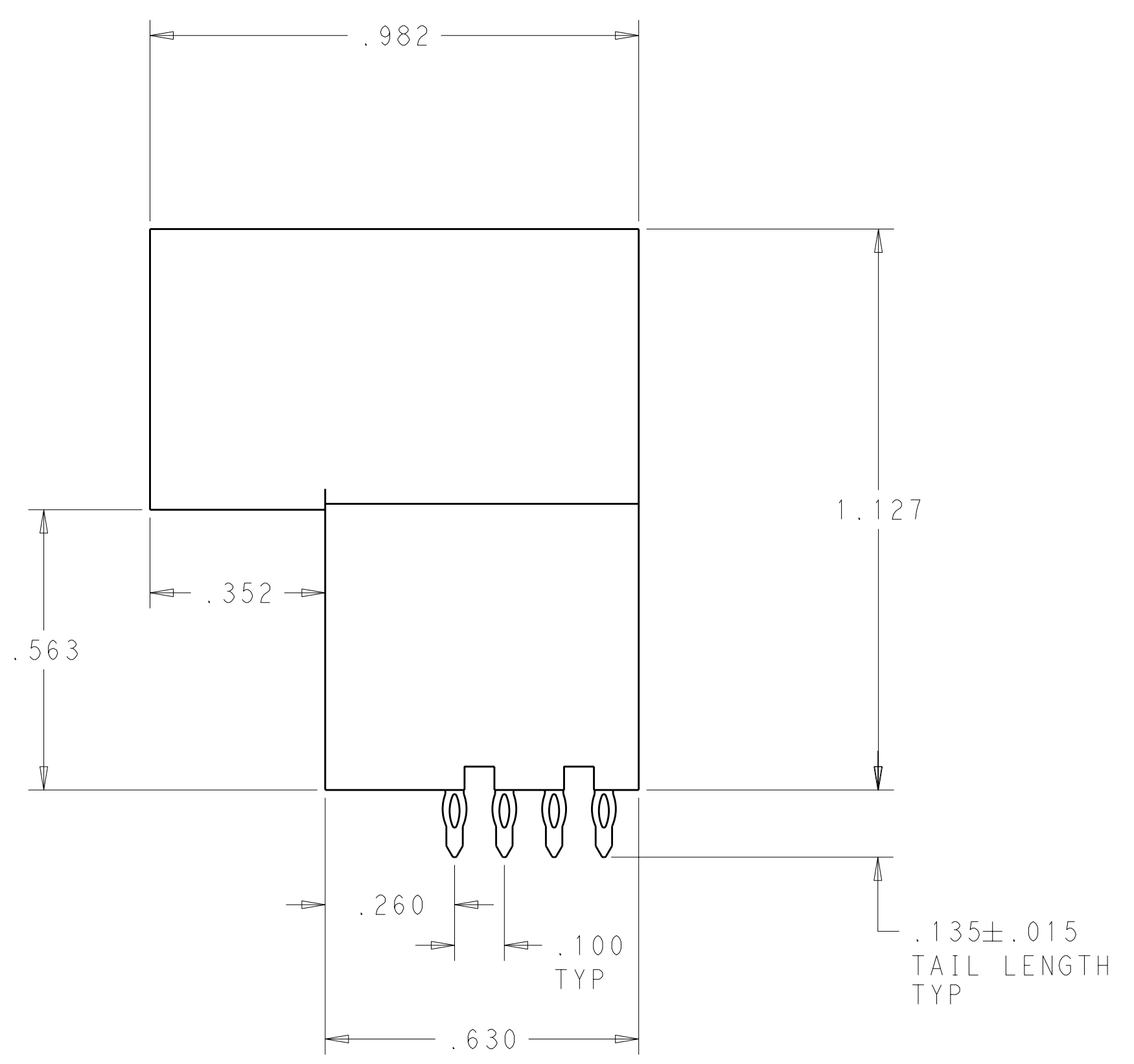
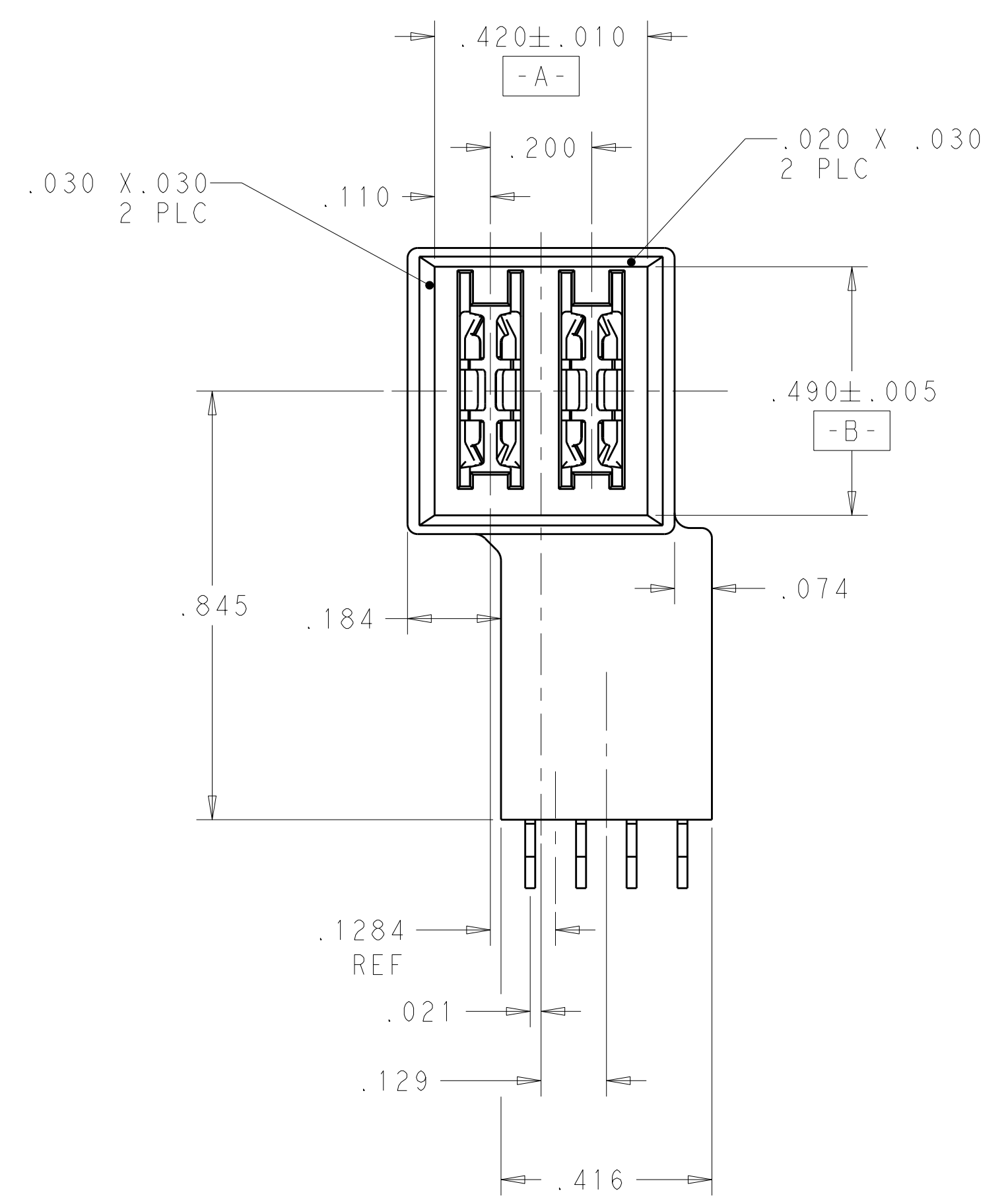
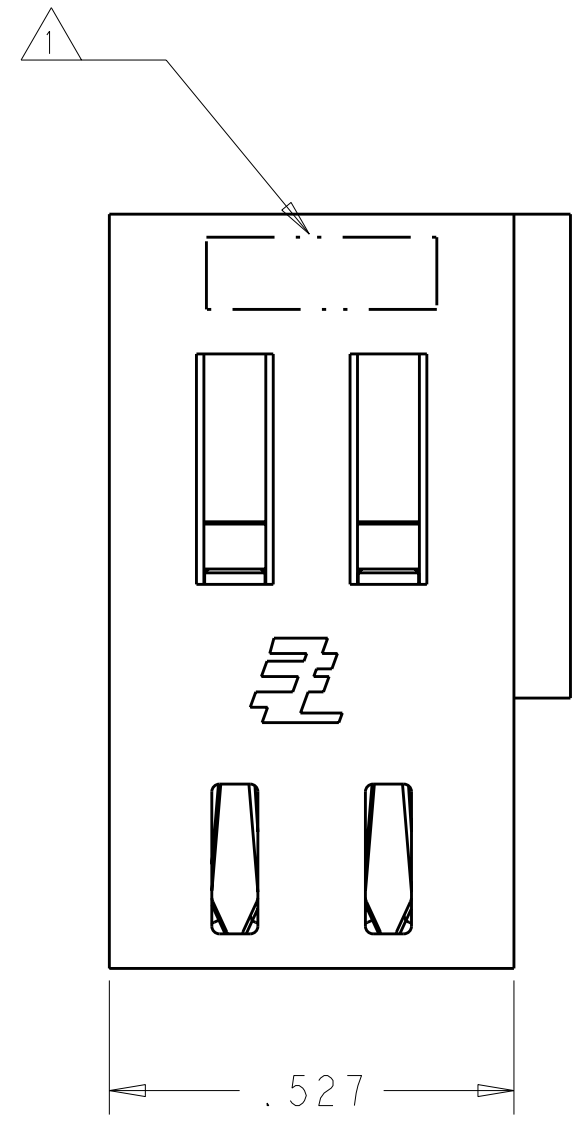
Tel: +86-755-8981 8866 Fax: +86-755-8427 6832

Email & Skype: info@chipsmall.com Web: www.chipsmall.com

Address: A1208, Overseas Decoration Building, #122 Zhenhua RD., Futian, Shenzhen, China



LOC	DIST	REV	DATE	DWN	APVD
ES	00	B	10OCT2011	CZ	SY
		DESCRIPTION			
		REV PER ECR-11-020579			



- △ "AMP", TRADEMARK, PART NUMBER AND DATE CODE TO BE MARKED IN AREA SHOWN
- △ MATERIAL: HOUSING - GLASS FILLED HIGH TEMP THERMO PLASTIC, UL94 V-0
 SIGNAL CONTACT - HIGH CONDUCTIVITY COPPER ALLOY
 POWER CONTACT - HIGH CONDUCTIVITY COPPER ALLOY
 POWER CONTACTS - .000050 MIN Ni UNDER ALL
 .000030 MIN Au ON CONTACT AREA
 .000100 MIN Sn AT PCB INTERFACE
- △ MECHANICAL CONNECTOR KEEP OUT ZONE
- △ DATUM AND BASIC DIMENSIONS ESTABLISHED BY CUSTOMER
- △ PCB - ALL HOLE DIAMETERS ARE FINISHED HOLE SIZES
- △ PCB - .0453 ± .0010 DRILLED HOLES PLATED WITH .0003 MIN Sn OVER
 .001 TO .003 CU PLATING TO ACHIEVE A .040 ± .003 DIA HOLE
- ⓐ △ RECOMMENDED TORQUE IS 4 IN.LB WHEN SCREW 2057509-1 IS USED AND
 ASSUMED THAT THE CARD THICKNESS IS 3MM
- △ A LUBRICANT COMPOSED KRYTOX APPLIED TO THE MATIING INTERFACE OT THE CONTACTS
- △ A LUBRICANT HMI5 APPLIED TO THE MATIING INTERFACE OT THE CONTACTS

SUPERSEDED BY 1892714-2

REV	DATE	DESCRIPTION	DATE	DWN	APVD
2P	1892714-2				
2P	1892714-1				
LUBRICANT		DESCRIPTION	PART NUMBER		
		TE Connectivity			
DWN: C. ZHOU 05MAR2010		NAME: RIGHT ANGLE PLUG ASSEMBLY WITH RAISED HEIGHT MULTI-BEAM XLE			
CHK: S. ZHAO 05MAR2010		SIZE: CAGE CODE: DRAWING NO: A100779 C=1892714			
APVD: -		RESTRICTED TO: IBM			
MATERIAL: -		CUSTOMER DRAWING			
FINISH: -		SCALE: - SHEET 1 OF 3 REV B			

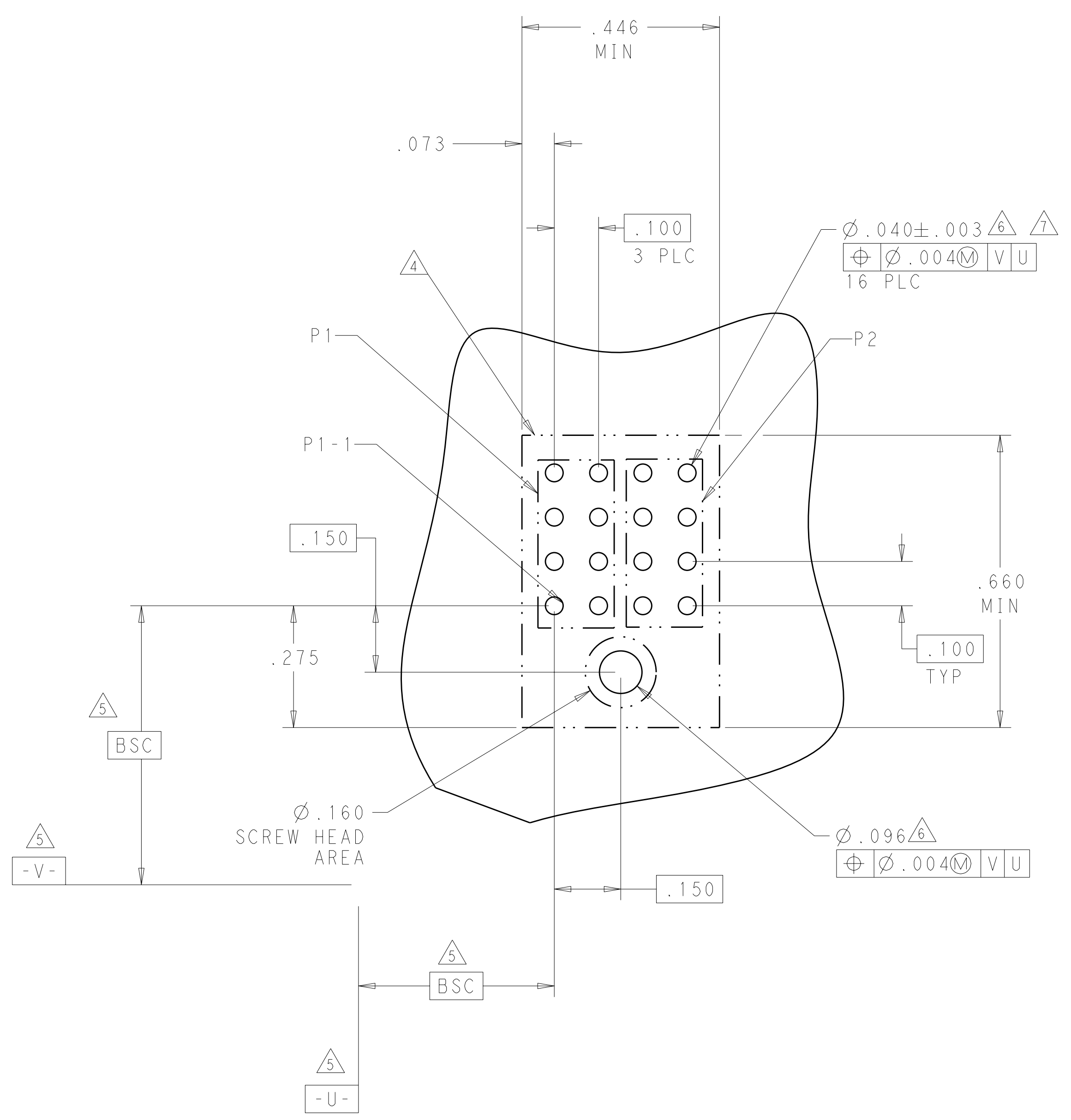
LOC	DIST	REV	DATE	BY	APPD
ES	00				

REVISIONS			
REV	DATE	BY	DESCRIPTION
-	-	-	SEE SHEET 1

SUPERSEDED BY 1892714-2

PART NUMBER	POWER	
	P1	P2
1892714-1	CA	CA
2P		

PART NUMBER	POWER	
	P1	P2
1892714-2	CA	CA
2P		

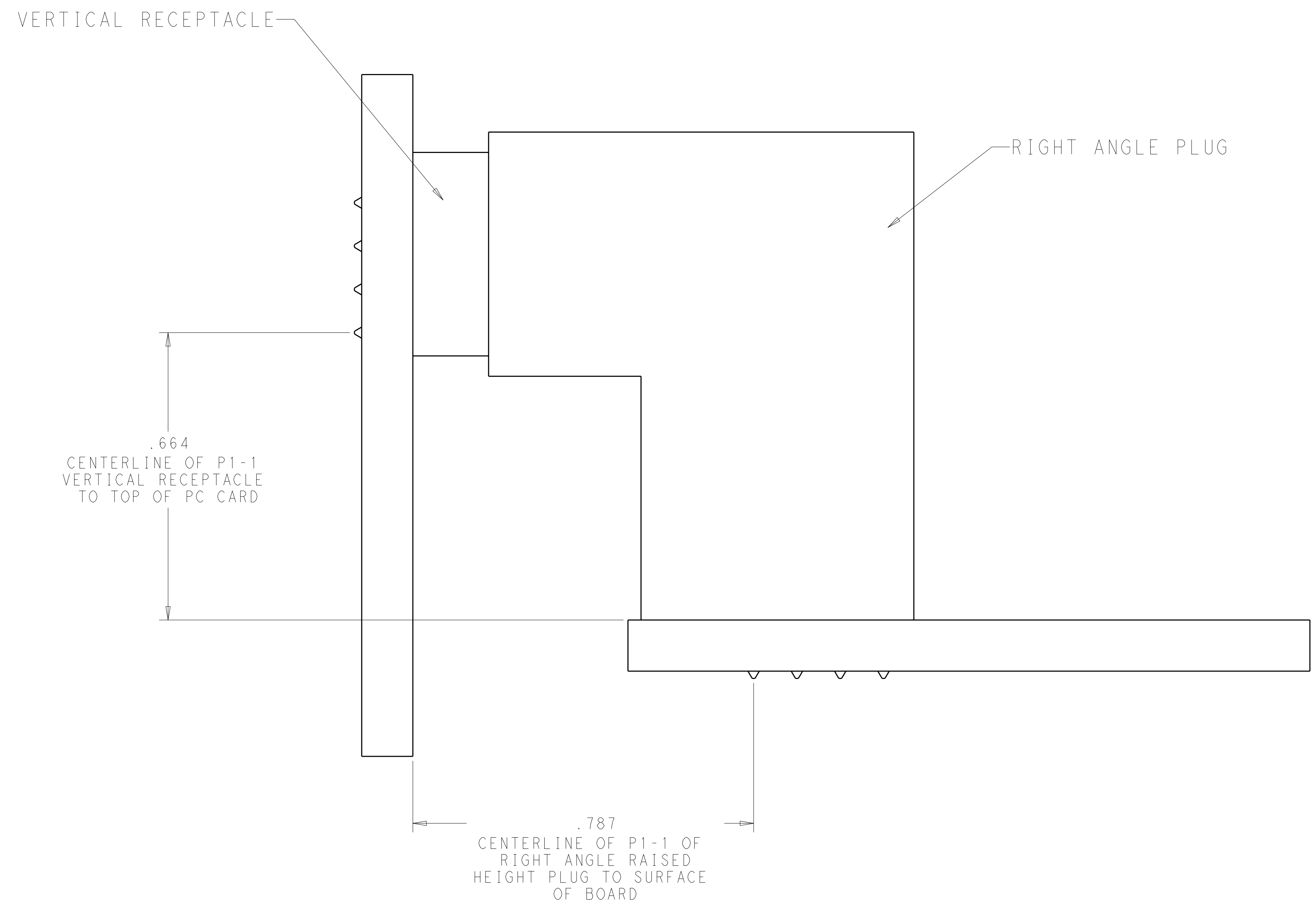


RECOMMENDED 1892714-1 AND 1892714-2 PCB LAYOUT

CA	POWER CONTACT, STD
CODE	DESCRIPTION
	CONTACTS

THIS DRAWING IS A CONTROLLED DOCUMENT.		DWN C. ZHOU 05MAR2010	NAME S. ZHAO	PRODUCT SPEC	RIGHT ANGLE PLUG ASSEMBLY WITH RAISED HEIGHT MULTI-BEAM XLE
DIMENSIONS: INCHES	TOLERANCES UNLESS OTHERWISE SPECIFIED:	CHK S. ZHAO 05MAR2010	APVD	APPLICATION SPEC	RESTRICTED TO
	0 PLC ±				IBM
	1 PLC ±				REV B
	2 PLC ±				
	3 PLC ±.005				
	4 PLC ±.0020				
	ANGLES ±.2°				
MATERIAL	FINISH	WEIGHT	SCALE	CUSTOMER DRAWING	

LOC	DIST	REVISIONS			
P	LTB	DESCRIPTION	DATE	DWN	APVD
ES	00	SEE SHEET 1	-	-	-



**MATING WITH VERTICAL RECEPTACLE (1-6450869-3)
 REFERENCE**

THIS DRAWING IS A CONTROLLED DOCUMENT.		DWN C. ZHOU 05MAR2010	TE Connectivity	
DIMENSIONS: INCHES		CHK S. ZHAO 05MAR2010	NAME	
TOLERANCES UNLESS OTHERWISE SPECIFIED:		APVD	PRODUCT SPEC	
9 PLC ± 7 PLC ± 5 PLC ± 4 PLC ±.005 ANGLES ±.0020 FINISH #2		APVD	APPLICATION SPEC	
MATERIAL		WEIGHT	SIZE A100779	DRAWING NO. C=1892714
		CUSTOMER DRAWING	RESTRICTED TO IBM	SCALE - SHEET 3 OF 3 REV B