



Chipsmall Limited consists of a professional team with an average of over 10 year of expertise in the distribution of electronic components. Based in Hongkong, we have already established firm and mutual-benefit business relationships with customers from,Europe,America and south Asia,supplying obsolete and hard-to-find components to meet their specific needs.

With the principle of “Quality Parts,Customers Priority,Honest Operation,and Considerate Service”,our business mainly focus on the distribution of electronic components. Line cards we deal with include Microchip,ALPS,ROHM,Xilinx,Pulse,ON,Everlight and Freescale. Main products comprise IC,Modules,Potentiometer,IC Socket,Relay,Connector.Our parts cover such applications as commercial,industrial, and automotives areas.

We are looking forward to setting up business relationship with you and hope to provide you with the best service and solution. Let us make a better world for our industry!



Contact us

Tel: +86-755-8981 8866 Fax: +86-755-8427 6832

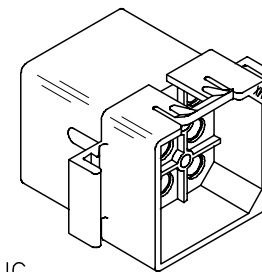
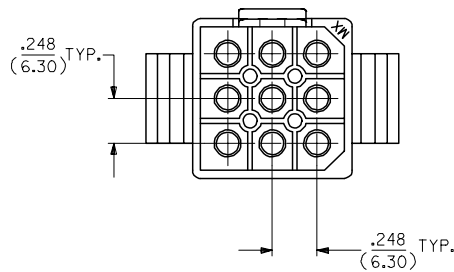
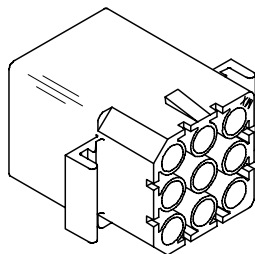
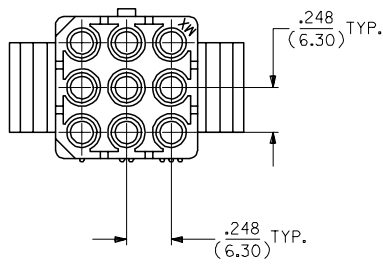
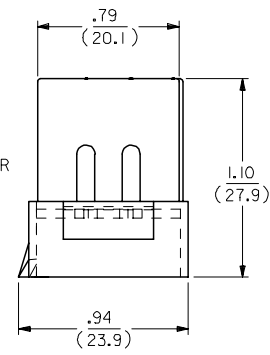
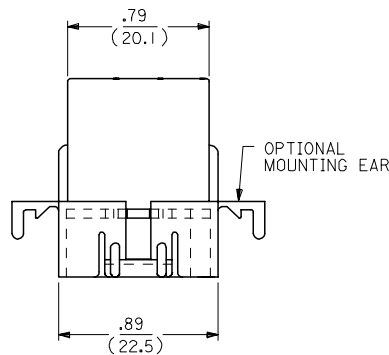
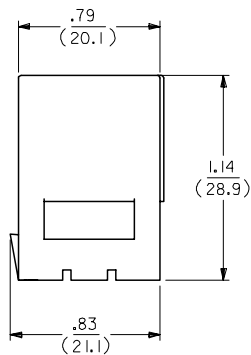
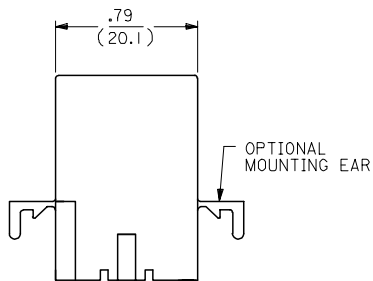
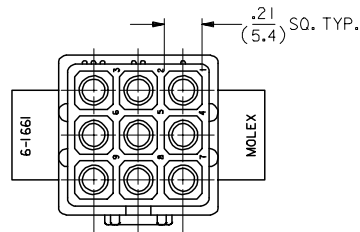
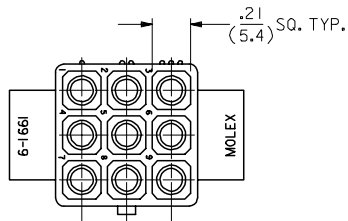
Email & Skype: info@chipsmall.com Web: www.chipsmall.com

Address: A1208, Overseas Decoration Building, #122 Zhenhua RD., Futian, Shenzhen, China



13 12 11 10 9 8 7 6 5 4 3 2 1

J
I
H
G
F
E
D
C
B
A



RECEPTACLE

PLUG

| | |
|-----------|---|
| 2 | J |
| 1 | J |
| SHT. REV. | |

| UPDATE TITLE BLOCK EC NO: UCP2007-1498 DRW: AELHAG 2007/04/04 CHKD: AELHAG 2007/04/04 APPR: FSM TH 2007/04/04 REV. DESCRIPTION | QUALITY SYMBOLS ▽=0 ▽=0 | GENERAL TOLERANCES (UNLESS SPECIFIED) <table border="1"> <thead> <tr> <th></th> <th>mm</th> <th>INCH</th> </tr> </thead> <tbody> <tr> <td>4 PLACES</td> <td>± .10</td> <td>± .004</td> </tr> <tr> <td>3 PLACES</td> <td>± .15</td> <td>± .006</td> </tr> <tr> <td>2 PLACES</td> <td>± 0.25</td> <td>± .010</td> </tr> <tr> <td>1 PLACE</td> <td>± 0.35</td> <td>± .014</td> </tr> </tbody> </table> ANGULAR ± 1 ° | | mm | INCH | 4 PLACES | ± .10 | ± .004 | 3 PLACES | ± .15 | ± .006 | 2 PLACES | ± 0.25 | ± .010 | 1 PLACE | ± 0.35 | ± .014 | DIMENSION STYLE IN/MM | SCALE 2:1 | DESIGN UNITS INCH | THIRD ANGLE PROJECTION |
|--|-------------------------------|--|--------------------|--------------------|--------------------|--|-------|--------|----------|-------|--------|----------|--------|--------|---------|--------|--------|--------------------------|--------------|----------------------|------------------------|
| | | mm | INCH | | | | | | | | | | | | | | | | | | |
| | 4 PLACES | ± .10 | ± .004 | | | | | | | | | | | | | | | | | | |
| | 3 PLACES | ± .15 | ± .006 | | | | | | | | | | | | | | | | | | |
| 2 PLACES | ± 0.25 | ± .010 | | | | | | | | | | | | | | | | | | | |
| 1 PLACE | ± 0.35 | ± .014 | | | | | | | | | | | | | | | | | | | |
| DRAWN BY KBW | DATE 1989/04/25 | CHECKED BY RW | DATE 1989/04/25 | APPROVED BY RAS | DATE 1989/04/25 | TITLE .093/(2.36) HOUSINGS, PLUG AND RECEPTACLE, 9 CKT, .248/(6.30) CTRS. | | | | | | | | | | | | | | | |
| MATERIAL NO. | DOCUMENT NO. | SHEET NO. | MOLEX INCORPORATED | | | | | | | | | | | | | | | | | | |
| DRAFT WHERE APPLICABLE MUST REMAIN WITHIN DIMENSIONS | SIZE C | SEE CHART | SD-1991-9* | 1 OF 2 | | | | | | | | | | | | | | | | | |

12 11 10 9 8 7 6 5 4 3 2 1

| PLUG | | |
|------------|------------|----------|
| ORDER NO | ENG NO | |
| 19-09-2091 | 1991-9P | |
| 19-09-2092 | 1991-9P1 | |
| 19-09-7091 | 1991-9PBK | OBSOLETE |
| 19-09-7092 | 1991-9P1BK | |
| - | - | |
| - | - | |

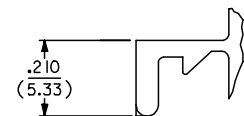
| RECEPTACLE | | |
|------------|------------|--|
| ORDER NO | ENG NO | |
| 19-09-1091 | 1991-9R | |
| 19-09-1092 | 1991-9R1 | |
| 19-09-6091 | 1991-9RBK | |
| 19-09-6092 | 1991-9R1BK | |
| - | - | |
| - | - | |

LEGEND:
 1991-9****

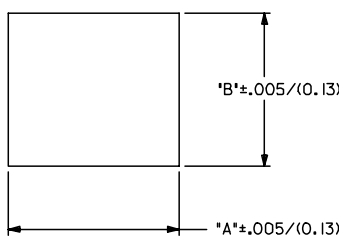
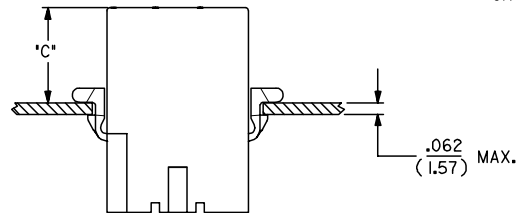
CIRCUIT SIZE
 P = PLUG
 R = RECEPTACLE

BLANK = WITH STANDARD EARS
 1 = WITHOUT EARS
 2 = WITH PREBENT EARS

COLOR:
 BLANK = NATURAL COLOR
 AM = AMBER BK = BLACK BU = BLUE
 BN = BROWN GY = GRAY GN = GREEN
 OR = ORANGE RD = RED YW = YELLOW

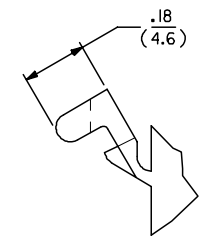
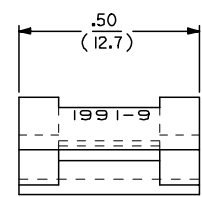


DETAIL A
 STANDARD MOUNTING EAR
 (SCALE 4:1)



RECOMMENDED PANEL OPENING

| HOUSING | DIM. "A" | DIM. "B" | "C" PREBENT EAR | "C" STANDARD EAR |
|---------|---------------|--------------|-----------------|------------------|
| PLUG | 1.048/(26.60) | .910/(23.10) | .52/(13.2) | .51/(12.9) |
| RECEPT. | .946/(24.00) | .850/(21.60) | .54/(13.7) | .53/(13.5) |



DETAIL B
 PREBENT MOUNTING EAR
 (SCALE 4:1)

- NOTES:
1. MATERIAL: NYLON TYPE 6/6, 94V-2.
 2. FINISH: N/A
 3. PRODUCT SPECIFICATION: PS-02-09
 4. PACKAGING SPECIFICATION: PK-1991-001
 5. HOUSINGS FOR USE WITH MOLEX STANDARD .093/(2.36) TYPE TERMINALS.
 6. PARTS CONFORM TO CLASS B REQUIREMENTS OF COSMETIC SPECIFICATION PS-45499-002.

| | | | | | | | |
|---|--|---|---|---|---|------------------------|------------------|
| ADD NOTES 2.4 & 6 FCC NO: UCP2007-1498 DRW: AELHAG 2007/04/04 CHKD: AELHAG 2007/04/04 APPR: FSM TH 2007/04/04 REV: DESCRIPTION | QUALITY SYMBOLS | GENERAL TOLERANCES (UNLESS SPECIFIED) | DIMENSION STYLE IN/MM | SCALE 2:1 | DESIGN UNITS INCH | THIRD ANGLE PROJECTION | |
| | =0 =0 | mm INCH 4 PLACES ± --- ± --- 3 PLACES ± --- ± .010 2 PLACES ± 0.25 ± .014 1 PLACE ± 0.35 ± --- ANGULAR ±1/2° | DRAWN BY DATE KBW 1989/04/25 CHECKED BY DATE RW 1989/04/25 APPROVED BY DATE RAS 1989/04/25 | TITLE | .093/(2.36) HOUSINGS, PLUG AND RECEPTACLE, 9 CKT, .248/(6.30) CTRS. | | |
| | DRAFT WHERE APPLICABLE MUST REMAIN WITHIN DIMENSIONS | | SEE CHART | MATERIAL NO. | MOLEX INCORPORATED SD-1991-9* | | |
| | | | SIZE C | THIS DRAWING CONTAINS INFORMATION THAT IS PROPRIETARY TO MOLEX INCORPORATED AND SHOULD NOT BE USED WITHOUT WRITTEN PERMISSION | | DOCUMENT NO. | SHEET NO. 2 OF 2 |