



Chipsmall Limited consists of a professional team with an average of over 10 year of expertise in the distribution of electronic components. Based in Hongkong, we have already established firm and mutual-benefit business relationships with customers from,Europe,America and south Asia,supplying obsolete and hard-to-find components to meet their specific needs.

With the principle of “Quality Parts,Customers Priority,Honest Operation,and Considerate Service”,our business mainly focus on the distribution of electronic components. Line cards we deal with include Microchip,ALPS,ROHM,Xilinx,Pulse,ON,Everlight and Freescale. Main products comprise IC,Modules,Potentiometer,IC Socket,Relay,Connector.Our parts cover such applications as commercial,industrial, and automotives areas.

We are looking forward to setting up business relationship with you and hope to provide you with the best service and solution. Let us make a better world for our industry!



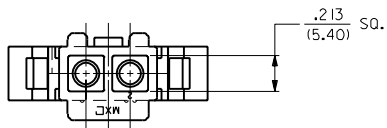
## Contact us

Tel: +86-755-8981 8866 Fax: +86-755-8427 6832

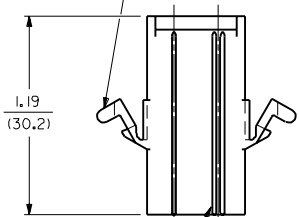
Email & Skype: info@chipsmall.com Web: www.chipsmall.com

Address: A1208, Overseas Decoration Building, #122 Zhenhua RD., Futian, Shenzhen, China

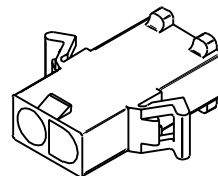
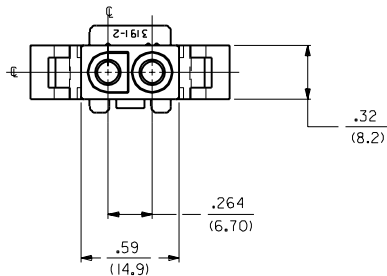
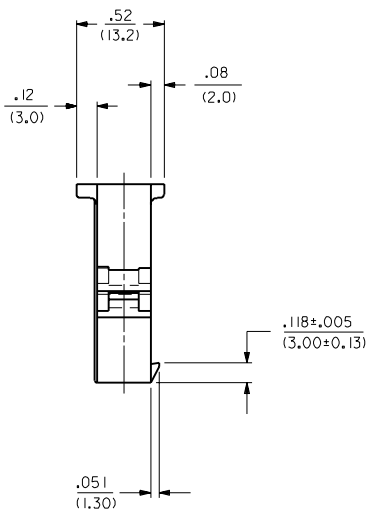




PREBENT MOUNTING EAR  
(WHEN SPECIFIED)



CIRCUIT NUMBER  
IDENTIFICATION RIBS



**PLUG**

3	E2	
2	D	
1	E4	
SH.	REV.	LTR.
REVISE ONLY ON CAD SYSTEM		

DIMENSIONS SHOWN METRIC (INCH)  $\nabla = 0$   $\blacktriangledown = 0$

UNLESS OTHERWISE SPECIFIED TOLERANCES: ANGULAR  $\pm .001$  TO

INCH	METRIC
3 PLACE $\pm .010$	---
2 PLACE $\pm .014$	$\pm 0.25$
1 PLACE ---	$\pm 0.35$

DRAFT WHERE APPLICABLE MUST REMAIN WITHIN DIMENSIONS

PART NO. **SEE CHART** DRWG. NO. **SD-3191-2\***

FILE NAME: S31912X1.DWG

SCALE: 2 : 1

MOLEX INCORPORATED LITTLE ROCK, AR 72202 U.S.A.

SHEET NO. 1 OF 3 DATE 11/21/88

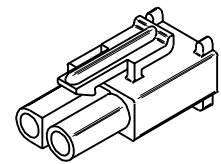
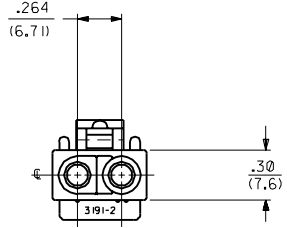
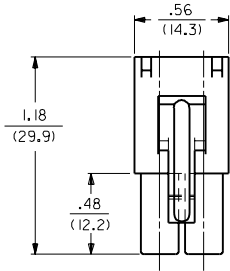
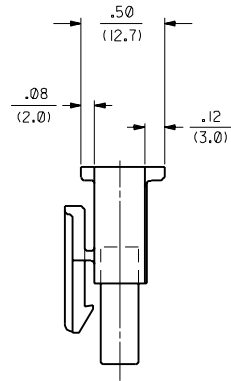
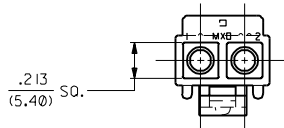
DRW. BY: CEP CHKD. BY: RW

APP'D. BY: RAS

THIS DRAWING CONTAINS INFORMATION THAT IS PROPRIETARY TO MOLEX INC. AND SHOULD NOT BE USED WITHOUT WRITTEN PERMISSION.

NO P.S. 1

E4	REVISED UCR 98-0148 WANG 98-04-15
E3	ADD RAMP DIM'S ECN #U4 0293 3-1-94 RW
E2	X-REMOVE ECR U3 0001 C/C 12/30/92 RW
E1	REL. RED VERSIONS ECR U1 2167 C/C 1/24/92 RW
E	REV. MATL. CODE ECR # U90901 KBW 01-25-89 RW
D	REV. & REDRAWN ECR UB 1858 GEP 11-21-88 RW

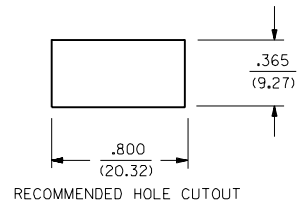
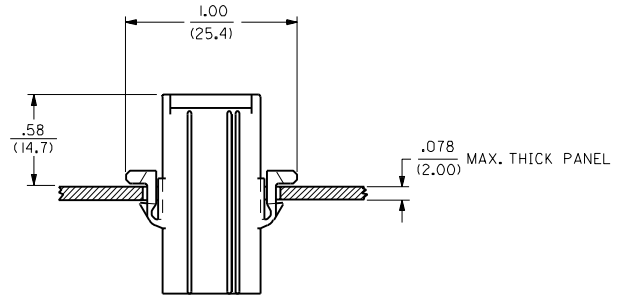


**RECEPTACLE**

DIMENSIONS SHOWN METRIC (INCH)		REVISIONS	
UNLESS OTHERWISE SPECIFIED TOLERANCES: ANGULAR ± .005° TO		D	
INCH METRIC		SEE SHT. 1	
3 PLACE ± .010	---	LTR.	REVISIONS
2 PLACE ± .014	± 0.25	LTR.	REVISIONS
1 PLACE ---	± 0.35	LTR.	REVISIONS
DRAFT WHERE APPLICABLE MUST REMAIN WITHIN DIMENSIONS		LTR.	
DRAWN: GEP		APP'D. RAS	
CHK'D. RW		SCALE 2 : 1	
FILE NAME S31912X2		DIV. CP	
TITLE		SIZE	
.093/(2.36) HOUSING, PLUG AND RECEPTACLE, 2 CKT., .264/(6.70) CTRS.		NO P.S. 1	
MOLEX INCORPORATED		PART NO. SD-3191-2*	
LITSEJLL 60532 U.S.A.		SHEET NO. 2	
DATE 11/21/88		DRWG. NO.	

PLUG	
PART NO.	ENG. NO.
19-09-2028	3191-2P
19-09-2029	3191-2P1
19-09-2027	3191-2P-201
19-09-2026	3191-2P1-201
19-09-2020	3191-2P IRD
19-09-2021	3191-2P IBU

RECEPTACLE	
PART NO.	ENG. NO.
19-09-1029	3191-2R1
19-09-1026	3191-2R1-201
19-09-1020	3191-2R IRD
19-09-1021	3191-2R IBU



**LEGEND:**

3191-2 \*\*\*\*\*  
 CIRCUIT SIZE  
 P = PLUG  
 R = RECEPTACLE  
 EARS: BLANK = WITH PREBENT EARS (PLUG ONLY)  
 I = WITHOUT EARS

COLOR: BLANK = NATURAL COLOR  
 AM=AMBER BK=BLACK BU=BLUE  
 BN=BROWN GY=GRAY GN=GREEN  
 OR=ORANGE RD=RED YW=YELLOW  
 MATERIAL: BLANK=NYLON TYPE 6/6, 94V-2  
 201=NYLON TYPE 6/6, 94V-0

**NOTES:**

1. THESE HOUSINGS FOR USE WITH MOLEX .093/(2.36) DIAMETER SERIES TERMINALS.

APP'D BY	CHK'D BY	SCALE
RAS	RW	--:--

3 PLACE	±	INCH	METRIC
2	.014	± 0.25	
1	---	± 0.35	

UNLESS OTHERWISE SPECIFIED TOLERANCES: ANGULAR ± .04° 10°

DRAFT WHERE APPLICABLE MUST REMAIN WITHIN DIMENSIONS

REVISIONS

E2	SEE SHEET I
E1	SEE SHEET I
E	SEE SHEET I
D	SEE SHEET I

DIMENSIONS SHOWN METRIC (INCH) ∇ = 0 ▼ = 0 REVISE ONLY ON CAD SYSTEM

TITLE: .093/(2.36) HOUSINGS PLUG AND RECEPTACLE 2 CKT ±.264/(6.70) CTRS.

MOLEX INCORPORATED LITTLE ROCK, AR 60532 U.S.A.

SEE CHART SD-3191-2

FILE NAME: 531912X3.DWG

THIS DRAWING CONTAINS INFORMATION THAT IS PROPRIETARY TO MOLEX INC. AND SHOULD NOT BE USED WITHOUT WRITTEN PERMISSION.

SHEET NO. 3 DATE 11/21/88

NO P.S. 1