



Chipsmall Limited consists of a professional team with an average of over 10 year of expertise in the distribution of electronic components. Based in Hongkong, we have already established firm and mutual-benefit business relationships with customers from,Europe,America and south Asia,supplying obsolete and hard-to-find components to meet their specific needs.

With the principle of “Quality Parts,Customers Priority,Honest Operation,and Considerate Service”,our business mainly focus on the distribution of electronic components. Line cards we deal with include Microchip,ALPS,ROHM,Xilinx,Pulse,ON,Everlight and Freescale. Main products comprise IC,Modules,Potentiometer,IC Socket,Relay,Connector.Our parts cover such applications as commercial,industrial, and automotives areas.

We are looking forward to setting up business relationship with you and hope to provide you with the best service and solution. Let us make a better world for our industry!



Contact us

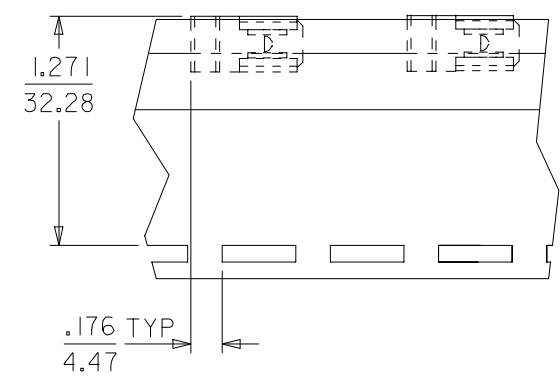
Tel: +86-755-8981 8866 Fax: +86-755-8427 6832

Email & Skype: info@chipsmall.com Web: www.chipsmall.com

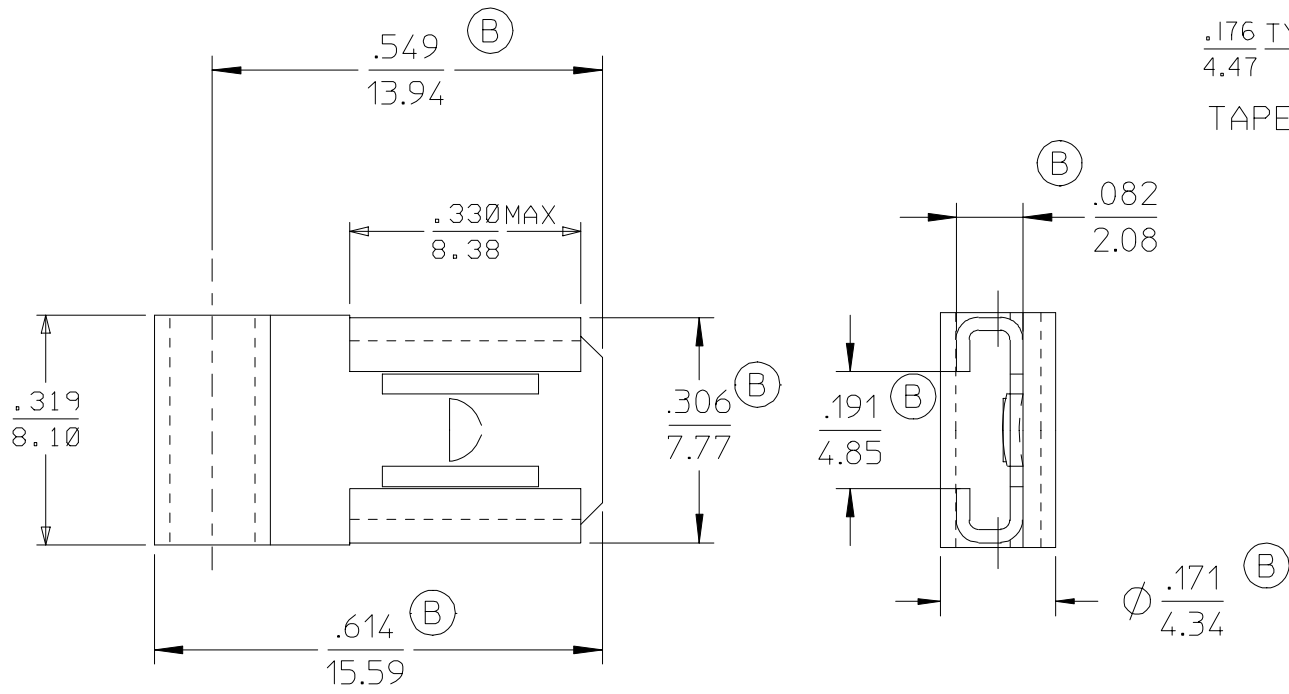
Address: A1208, Overseas Decoration Building, #122 Zhenhua RD., Futian, Shenzhen, China



6	5	4	3	2	1
MATERIAL NUMBER	ENGINEERING NUMBER	PLATING	CARRIER		
190080062	B-175P	NON-PLATED	LOOSE PIECE		
190080038	B-175	TIN PLATED	LOOSE PIECE		
190080039	B-175T	TIN PLATED	TAPE		



TAPE MOUNTING LOCATION



SALES DRAWING

- NOTES:
- MATERIAL: BRASS
 - PLATING SEE CHART.
 - RoHS COMPLIANT

CORRECT DIMS EC NO: ETC2007-0146 DRWN: JLOMASTRO 2006/10/11 CHKD: JMACNEIL 2006/10/11 APPR: JMACNEIL 2006/10/12 DESCRIPTION B	QUALITY SYMBOLS ▽=0 ▽=0	GENERAL TOLERANCES (UNLESS SPECIFIED) <table border="1"> <tr> <td></td> <td>mm</td> <td>INCH</td> </tr> <tr> <td>4 PLACES</td> <td>±---</td> <td>±---</td> </tr> <tr> <td>3 PLACES</td> <td>±---</td> <td>±.010</td> </tr> <tr> <td>2 PLACES</td> <td>±0.25</td> <td>±.010</td> </tr> <tr> <td>1 PLACE</td> <td>±0.3</td> <td>±---</td> </tr> </table>		mm	INCH	4 PLACES	±---	±---	3 PLACES	±---	±.010	2 PLACES	±0.25	±.010	1 PLACE	±0.3	±---	DIMENSION STYLE IN/MM DRAWN BY: JLOMASTRO DATE: 10/07/06 CHECKED BY: JMACNEIL DATE: 10/07/06 APPROVED BY: JMACNEIL DATE: 10/07/06	SCALE --- DESIGN UNITS INCH THIRD ANGLE PROJECTION	TITLE FLAG UNINSULATED KRYPTITE 12-14 AWG
		mm	INCH																	
	4 PLACES	±---	±---																	
	3 PLACES	±---	±.010																	
2 PLACES	±0.25	±.010																		
1 PLACE	±0.3	±---																		
		DRAFT WHERE APPLICABLE MUST REMAIN WITHIN DIMENSIONS	MATERIAL NO. SEE CHART	DOCUMENT NO. SD-19008-009	SHEET NO. 1 OF 1															
			SIZE A	THIS DRAWING CONTAINS INFORMATION THAT IS PROPRIETARY TO MOLEX INCORPORATED AND SHOULD NOT BE USED WITHOUT WRITTEN PERMISSION																