



Chipsmall Limited consists of a professional team with an average of over 10 year of expertise in the distribution of electronic components. Based in Hongkong, we have already established firm and mutual-benefit business relationships with customers from,Europe,America and south Asia,supplying obsolete and hard-to-find components to meet their specific needs.

With the principle of “Quality Parts,Customers Priority,Honest Operation,and Considerate Service”,our business mainly focus on the distribution of electronic components. Line cards we deal with include Microchip,ALPS,ROHM,Xilinx,Pulse,ON,Everlight and Freescale. Main products comprise IC,Modules,Potentiometer,IC Socket,Relay,Connector.Our parts cover such applications as commercial,industrial, and automotives areas.

We are looking forward to setting up business relationship with you and hope to provide you with the best service and solution. Let us make a better world for our industry!



Contact us

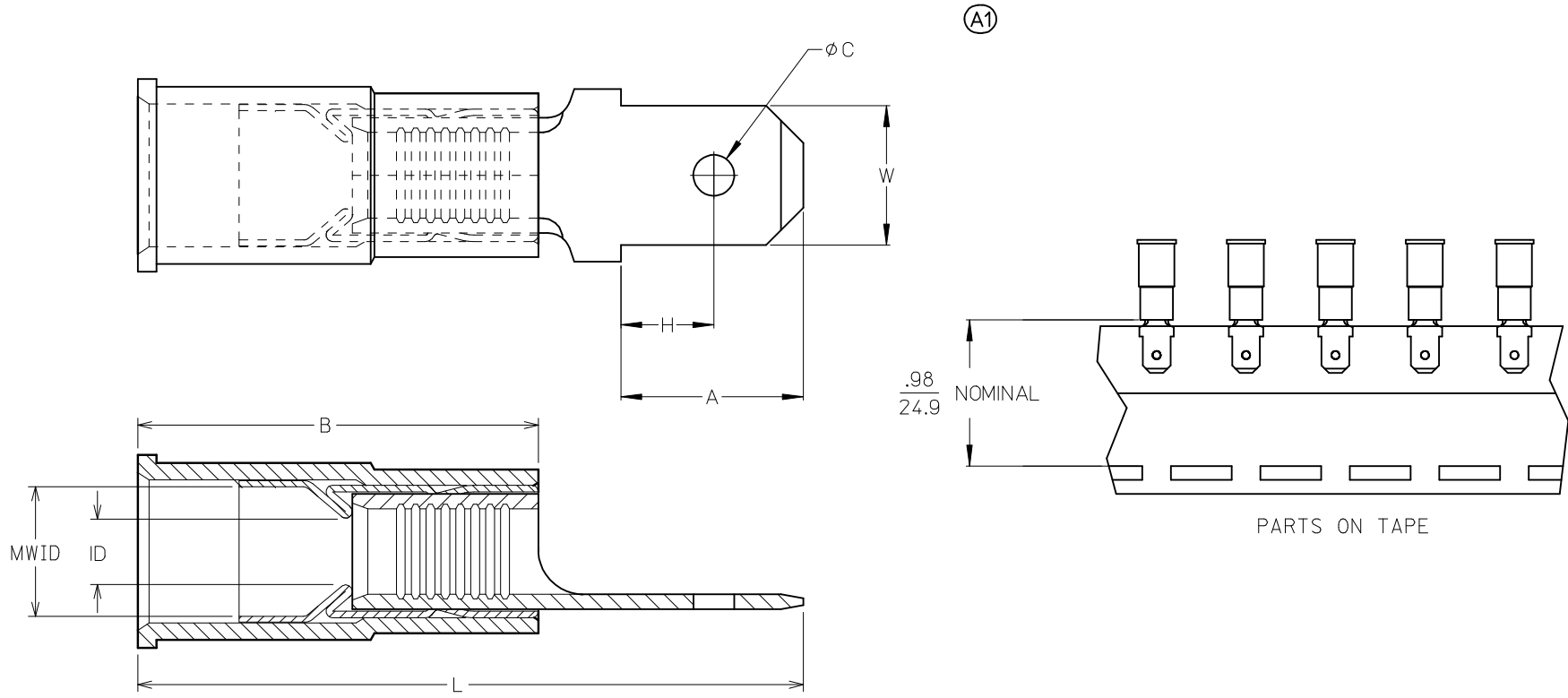
Tel: +86-755-8981 8866 Fax: +86-755-8427 6832

Email & Skype: info@chipsmall.com Web: www.chipsmall.com

Address: A1208, Overseas Decoration Building, #122 Zhenhua RD., Futian, Shenzhen, China



| 10 | 9 | 8 | 7 | 6 | 5 | 4 | 3 | 2 | 19025 | | | | | | | |
|-----------------------|-------------------|-------------------|------------------|--------------------------------------|-----------------------|--------|------------|------------|-----------|-----------|-----------------|---------|---------|------------------|--------------------------------|-----------------|
| LOOSE PC MATERIAL NO. | LOOSE PC ENG. NO. | ON TAPE MAT'L NO. | ON TAPE ENG. NO. | WIRE RANGE | TAB SIZE REFERENCE | COLOR | ID MIN | B REF | MWID | L MAX | W ±.005 0.13 | A MIN | H MAX | C ± .007 0.18 | TERMINAL MAT'L THICKNESS - REF | TERMINAL FINISH |
| 190250001 | AMCT-5 | 190250004 | AMCT-5T | 22-18AWG (0.38-.96mm ²) | .250x.032 (6.35x0.81) | RED | .054/1.37 | .546/13.87 | .138/3.51 | 1.02/25.9 | .250/6.35 | .30/7.6 | .14/3.6 | .075/1.91 | BRASS, .032/0.81 | ZINC CHROMATE |
| 190250007 | MCT-5 | 190250010 | MCT-5T | 16-14AWG (1.23-1.94mm ²) | .250x.032 (6.35x0.81) | BLUE | .081 /2.06 | .546/13.87 | .165/4.19 | 1.02/25.9 | .250/6.35 | .30/7.6 | .14/3.6 | .075/1.91 | BRASS, .032/0.81 | ZINC CHROMATE |
| 190250005 | CMCT-5 | 190250006 | CMCT-5T | 12-10AWG (3.09-5.01mm ²) | .250x.032 (6.35x0.81) | YELLOW | .128 /3.25 | .669/16.99 | .225/5.71 | 1.18/30.0 | .250/6.35 | .30/7.6 | .14/3.6 | .075/1.91 | BRASS, .032/0.81 | ZINC CHROMATE |
| 190250002 | AMCT-57 | 190250003 | AMCT-57T | 22-18AWG (0.38-.96mm ²) | .187x.020 (4.75x0.51) | RED | .054/1.37 | .546/13.87 | .138/3.51 | .92/23.4 | .187/4.75 | .24/6.1 | .13/3.3 | .055/1.40 | BRASS, .020/0.51 | ZINC CHROMATE |
| 190250008 | MCT-57 | 190250009 | MCT-57T | 16-14AWG (1.23-1.94mm ²) | .187x.020 (4.75x0.51) | BLUE | .081 /2.06 | .546/13.87 | .165/4.19 | .92/23.4 | .187/4.75 | .24/6.1 | .13/3.3 | .055/1.40 | BRASS, .020/0.51 | ZINC CHROMATE |



- NOTES:
1. TERMINAL MATERIAL & FINISH: SEE CHART
 2. INSULATION MATERIAL: NYLON
 3. FERRULE:
MATERIAL: BRASS
FINISH: TIN
 4. TAB DIMENSIONS PER UL310 SPECIFICATIONS.
 5. PART IS ROHS COMPLIANT.
 6. MWID = MAXIMUM WIRE INSULATION DIAMETER

| CORRECT LENGTH EC NO: PG2013-0420 DRW: HETHRODAHL 2012/09/21 CHKD: JMACNEIL 2012/09/21 APPR: JMACNEIL 2012/10/03 | QUALITY SYMBOLS | GENERAL TOLERANCES (UNLESS SPECIFIED) | DIMENSION STYLE | SCALE | DESIGN UNITS | THIRD ANGLE PROJECTION | | | | | | | | | | | | | | | | | | |
|---|----------------------------|---|-----------------|--|--------------|------------------------|------|------|----------|------|------|----------|------|------|---------|------|------|---------------|--|--|-------|-----|------|--|
| | $\nabla=0$ $\nabla 7=0$ | <table border="1"> <thead> <tr> <th></th> <th>mm</th> <th>INCH</th> </tr> </thead> <tbody> <tr> <td>4 PLACES</td> <td>±---</td> <td>±---</td> </tr> <tr> <td>3 PLACES</td> <td>±---</td> <td>±---</td> </tr> <tr> <td>2 PLACES</td> <td>±---</td> <td>±---</td> </tr> <tr> <td>1 PLACE</td> <td>±---</td> <td>±---</td> </tr> <tr> <td colspan="3">ANGULAR ±---°</td> </tr> </tbody> </table> | | mm | INCH | 4 PLACES | ±--- | ±--- | 3 PLACES | ±--- | ±--- | 2 PLACES | ±--- | ±--- | 1 PLACE | ±--- | ±--- | ANGULAR ±---° | | | IN/MM | --- | INCH | |
| | | mm | INCH | | | | | | | | | | | | | | | | | | | | | |
| | 4 PLACES | ±--- | ±--- | | | | | | | | | | | | | | | | | | | | | |
| 3 PLACES | ±--- | ±--- | | | | | | | | | | | | | | | | | | | | | | |
| 2 PLACES | ±--- | ±--- | | | | | | | | | | | | | | | | | | | | | | |
| 1 PLACE | ±--- | ±--- | | | | | | | | | | | | | | | | | | | | | | |
| ANGULAR ±---° | | | | | | | | | | | | | | | | | | | | | | | | |
| DESCRIPTION | DRAWN BY | CHECKED BY | APPROVED BY | TITLE | | | | | | | | | | | | | | | | | | | | |
| A1 | RCM | JM | FP | MALE QUICK DISCONNECT AVIKRIMP PARTIALLY INSULATED MOLEX INCORPORATED | | | | | | | | | | | | | | | | | | | | |
| | MATERIAL NO. | DOCUMENT NO. | | SHEET NO. | | | | | | | | | | | | | | | | | | | | |
| | SEE CHART | SD-19025-002 | | 1 OF 1 | | | | | | | | | | | | | | | | | | | | |
| THIS DRAWING CONTAINS INFORMATION THAT IS PROPRIETARY TO MOLEX INCORPORATED AND SHOULD NOT BE USED WITHOUT WRITTEN PERMISSION | | | | | | | | | | | | | | | | | | | | | | | | |