



Chipsmall Limited consists of a professional team with an average of over 10 year of expertise in the distribution of electronic components. Based in Hongkong, we have already established firm and mutual-benefit business relationships with customers from,Europe,America and south Asia,supplying obsolete and hard-to-find components to meet their specific needs.

With the principle of “Quality Parts,Customers Priority,Honest Operation,and Considerate Service”,our business mainly focus on the distribution of electronic components. Line cards we deal with include Microchip,ALPS,ROHM,Xilinx,Pulse,ON,Everlight and Freescale. Main products comprise IC,Modules,Potentiometer,IC Socket,Relay,Connector.Our parts cover such applications as commercial,industrial, and automotives areas.

We are looking forward to setting up business relationship with you and hope to provide you with the best service and solution. Let us make a better world for our industry!



## Contact us

Tel: +86-755-8981 8866 Fax: +86-755-8427 6832

Email & Skype: [info@chipsmall.com](mailto:info@chipsmall.com) Web: [www.chipsmall.com](http://www.chipsmall.com)

Address: A1208, Overseas Decoration Building, #122 Zhenhua RD., Futian, Shenzhen, China



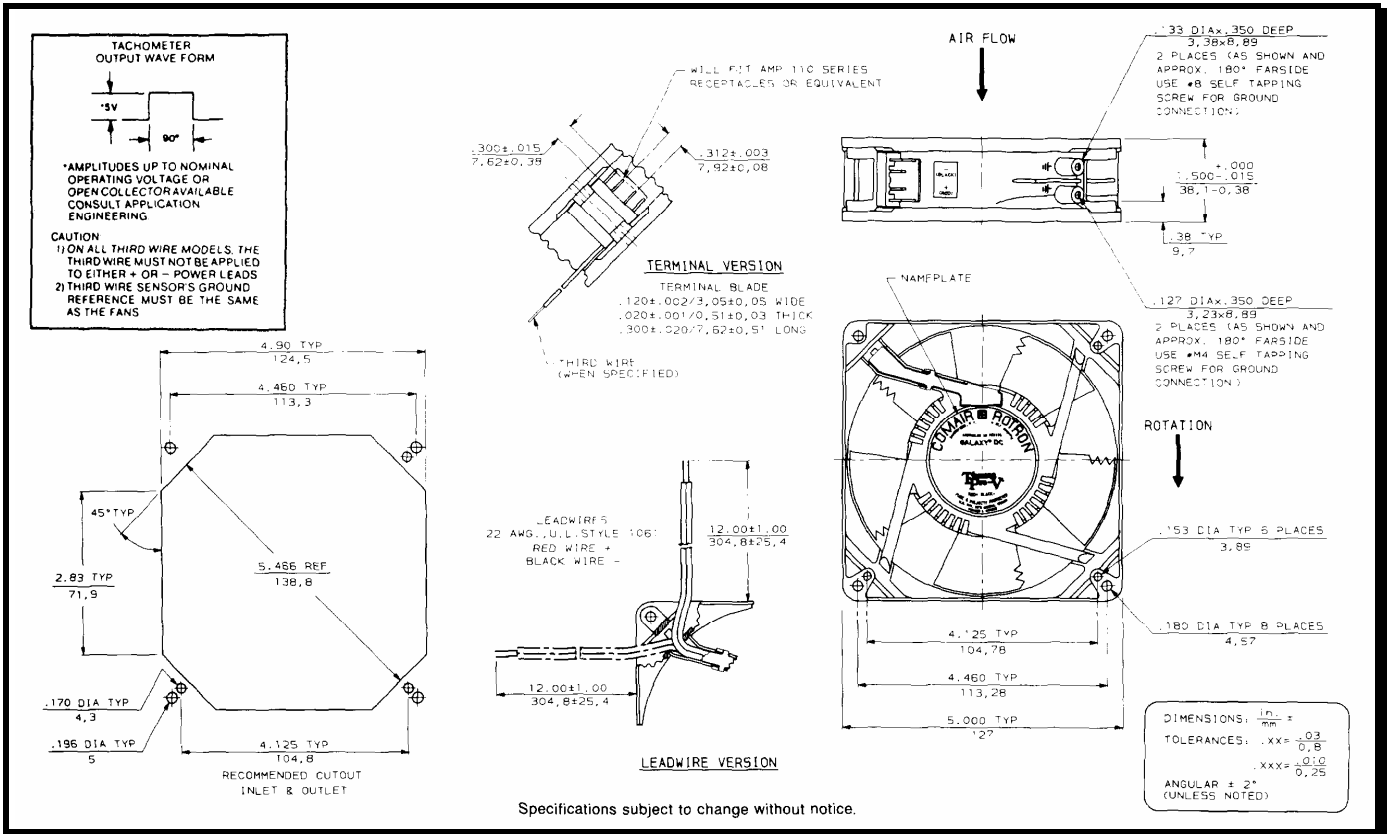
# SPECIFICATIONS

**Model Number:** GL24S3TDN-E2  
**Part Number :** 039992

January 31, 2006



## Mechanical Drawing:



Specifications subject to change without notice.

### Motor: (Max Speed)

|                         |               |
|-------------------------|---------------|
| Nominal Voltage         | = 24 vdc      |
| Operating Voltage Range | = 12 - 28 vdc |
| Nominal Running Current | = 0.630 amps  |
| Locked Rotor Current    | = 1.350 amps  |
| Running Power           | = 15.0 Watts  |
| Average Speed           | = 3200 RPM    |
| Bearings                | = Ball        |
| Air Flow                | = 150 CFM     |
| Acoustic                | = 53.6 dBA    |

### Construction:

Venturi: Die Cast Zinc, Black  
 Propeller: Plastic, Black, UL 94V-0

### Life Expectancy:

This fan is designed for continuous duty life of 82,500 hours at 50°C.

### Agency Certifications:

UL, CSA, TUV

### Additional Features:

Brushless DC Motor  
 Locked Rotor Protection  
 Automatic Restart Capability  
 Polarity Protected  
 Operating Temperature: -10°C to 70°C  
 Storage Temperature: -40°C to 85°C  
 Enviro-Shield Type 2 Coating  
 Thermal Speed Control - PTC on Hub

### Fan Performance Sensor:

|           |                           |
|-----------|---------------------------|
| Output:   | 5 volt TTL                |
| $I_c$     | 20mA Max.                 |
| $V_{cc}$  | 28vdc                     |
| Logic:    | High on Pass, Low on Fail |
| Delay:    | 10 sec. $\pm$ 4 sec.      |
| Latching: | No                        |
| Isolated: | No                        |

### Termination:

12" Lead wires, 22 AWG, UL 1061  
 Red - Power (+)  
 Black - Ground (-)  
 Blue/White - FPS