



Chipsmall Limited consists of a professional team with an average of over 10 year of expertise in the distribution of electronic components. Based in Hongkong, we have already established firm and mutual-benefit business relationships with customers from,Europe,America and south Asia,supplying obsolete and hard-to-find components to meet their specific needs.

With the principle of “Quality Parts,Customers Priority,Honest Operation,and Considerate Service”,our business mainly focus on the distribution of electronic components. Line cards we deal with include Microchip,ALPS,ROHM,Xilinx,Pulse,ON,Everlight and Freescale. Main products comprise IC,Modules,Potentiometer,IC Socket,Relay,Connector.Our parts cover such applications as commercial,industrial, and automotives areas.

We are looking forward to setting up business relationship with you and hope to provide you with the best service and solution. Let us make a better world for our industry!



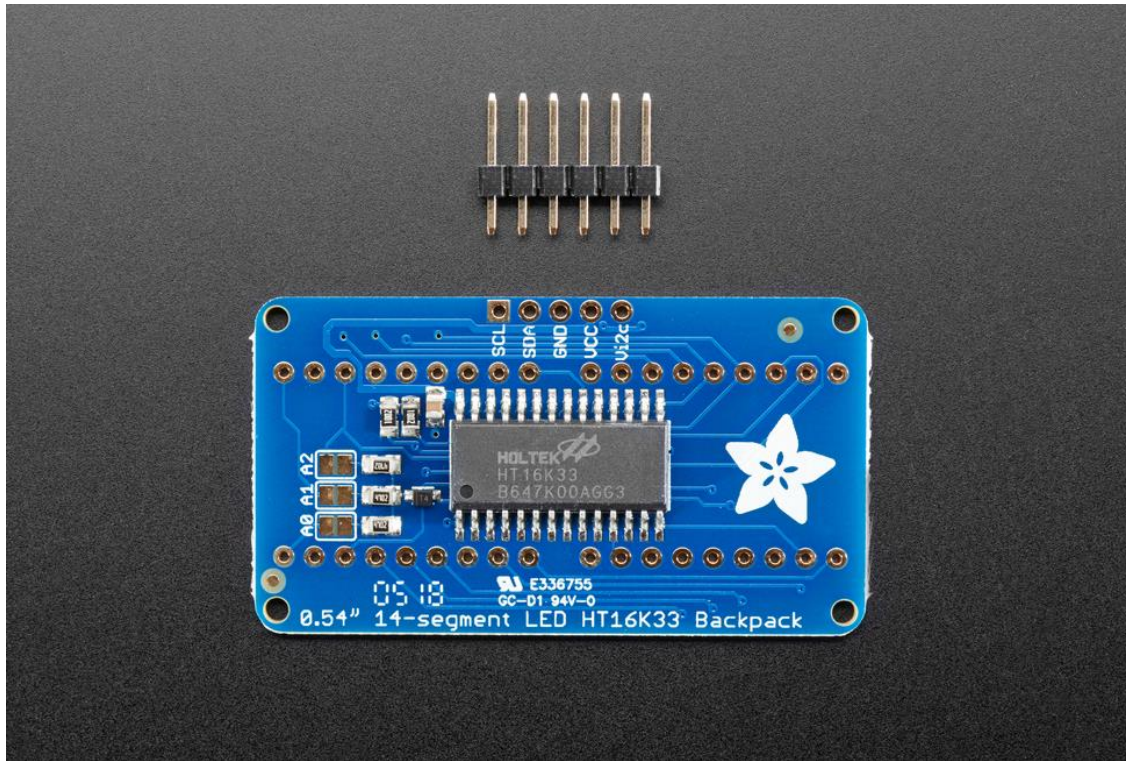
Contact us

Tel: +86-755-8981 8866 Fax: +86-755-8427 6832

Email & Skype: info@chipsmall.com Web: www.chipsmall.com

Address: A1208, Overseas Decoration Building, #122 Zhenhua RD., Futian, Shenzhen, China





Adafruit 14-segment LED Alphanumeric Backpack

PRODUCT ID: 1910

By popular request, you can now get our 14-segment LED backpacks without the LEDs! These backpacks feature an HT16K33 I2C LED driver, they're simple and easy to use – you can use our very nice library for the backpacks to get running in under half an hour, with numbers and letters displaying. If you've been eyeing matrix displays but hesitated because of the complexity, this is the solution you've been looking for!

Like our other LED backpacks, these are end-to-end stackable and by soldering the address jumpers on the back you can have up to 8 backpacks all sharing the same two I2C wires!

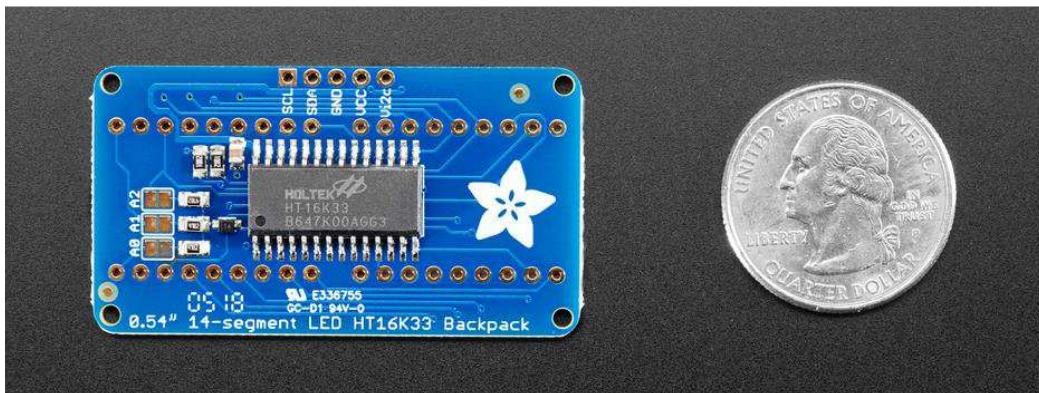
Comes with a fully tested and assembled LED backpack & 4-pin header. Some light soldering is required to attach the header and, of course, the display.

A set of two 2-digit 0.54" tall alphanumeric displays are not included, but we have lots of options in the store! We only know that this backpack works with the ones we stock. Other displays may not work, we don't guarantee 'em.

TECHNICAL DETAILS

Product Dimensions: 50.0mm x 27.0mm x 4.0mm / 2.0" x 1.1" x 0.2"

Product Weight: 5.5g / 0.2oz



<https://www.adafruit.com/product/1910> 7-30-18