



Chipsmall Limited consists of a professional team with an average of over 10 year of expertise in the distribution of electronic components. Based in Hongkong, we have already established firm and mutual-benefit business relationships with customers from,Europe,America and south Asia,supplying obsolete and hard-to-find components to meet their specific needs.

With the principle of “Quality Parts,Customers Priority,Honest Operation,and Considerate Service”,our business mainly focus on the distribution of electronic components. Line cards we deal with include Microchip,ALPS,ROHM,Xilinx,Pulse,ON,Everlight and Freescale. Main products comprise IC,Modules,Potentiometer,IC Socket,Relay,Connector.Our parts cover such applications as commercial,industrial, and automotives areas.

We are looking forward to setting up business relationship with you and hope to provide you with the best service and solution. Let us make a better world for our industry!



## Contact us

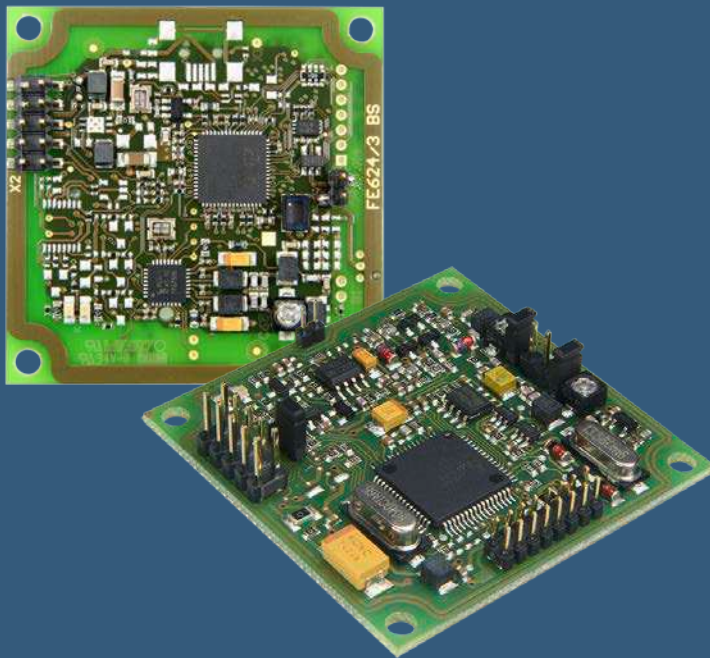
Tel: +86-755-8981 8866 Fax: +86-755-8427 6832

Email & Skype: info@chipsmall.com Web: www.chipsmall.com

Address: A1208, Overseas Decoration Building, #122 Zhenhua RD., Futian, Shenzhen, China



## Multi-tag Reader Modules ID CPR (13.56 MHz)



### FEATURES

- Also available as USB variant
- Data rates up to 847 kBit/s
- Low power consumption
- Command Queue for explicit reduction of communication cycles between host and reader module
- Supports NFC applications



**Order description: ID CPR40.0x / ID CPR.M02.VP/AB-x**

**Special advices:**

- The higher operation speed is caused by the so-called „Command Queue“. With this Command Queue a sequence of commands can be sent to the reader module within one poll.

The result is an explicit reduction of communication cycles between host and reader.

- Beside the six reader modules ID CPR40.0x, the ISO 15693 / ISO14443-reader modules ID CPR.M02.VP/AB-B and -BA resp. ID CPR.M02.VP/AB-C and -CA are available.

**Reader modules with integrated antenna**

	ID CPR40.00-A	ID CPR40.00-CDUSB	ID CPR.M02.VP/AB-B	ID CPR.M02.VP/AB-C
Dimensions	50 x 50 x 14 mm	50 x 50 x 14 mm	50 x 50 x 14 mm	50 x 50 x 14 mm
RS232-TTL interface		x	x	x
Data/Clock interface		x	x	x
Wiegand interface		x	x	x
RS232 interface	x			
USB interface		x		
Supply voltage	5V	5V	5V	5V
ISO 14443-A/-B	x	x	x	x
ISO 14443 Part 4 Support	x	x	TCL Firmware	TCL Firmware
Mifare classic read / write	x	x	x	x
ISO 15693			x	x
I-CODE1			x	
Data rate	106-847 kBit/s	106-847 kBit/s	106 kBit/s	106 kBit/s
NFC compatibility	x	x	x	x
Current consumption	130 mA	130 mA	300 mA	300 mA
Read 64 Byte mifare classic	2,6 ms	2,6 ms	4,1 ms	4,1 ms
RF transmitting power	100 mW	100 mW	250 mW	250 mW
Command Queue	x	x		

**Accessories:**

- ID ISC.ANT40/30 External antenna 40 mm x 30 mm
- ID ISC.ANT100/100 External antenna 100 mm x 100 mm
- ID NET.5V 5V power supply
- ID CO.RS232/LVTTL-A Converter LVTTTL to RS232
- ID CO.RS232/TTL-A Converter TTL to RS232
- ID CAB.RS-A Cable for RS232/485 and power supply
- ID CAB.A-A Adapter cable, 10 cm

Note: Errors and technical alterations reserved.  
The information is given in April 2017.

Not recommended for new design.

Order description: ID CPR40.0x / ID CPR.M02.VP/AB-x

## Reader modules for operation with external antennas

	ID CPR40.01-A	ID CPR40.01-CDUSB	ID CPR.M02.VP/AB-BA	ID CPR.M02.VP/AB-CA
Dimensions	50 x 50 x 14 mm	50 x 50 x 14 mm	50 x 50 x 14 mm	50 x 50 x 14 mm
RS232-TTL interface		x	x	x
Data/Clock interface		x	x	x
Wiegand interface		x	x	x
RS232 interface	x			
USB interface		x		
Supply voltage	5V	5V	5V	5V
ISO 14443-A/-B	x	x	x	x
ISO 14443 Part 4 Support	x	x	TCL Firmware	TCL Firmware
Mifare classic read / write	x	x	x	x
ISO 15693			x	x
I-CODE1			x	
Data rate	106-847 kBit/s	106-847 kBit/s	106 kBit/s	106 kBit/s
NFC compatibility	x	x	x	x
Current consumption	130 mA	130 mA	300 mA	300 mA
Read 64 Byte mifare classic	2,6 ms	2,6 ms	4,1 ms	4,1 ms
RF transmitting power	100 mW	100 mW	250 mW	250 mW
Command Queue	x	x		

## Standard conformity

### Radio approval

Europe	EN 300 330
USA	FCC 47 CFR Part 15*
EMC	EN 301 489
Safety	EN 60950
Health	EN 50364



As external antennas, two 50Ω antennas  
ID ISC.ANT40/30 and ID ISC.ANT100/100 are available.

\*only for ID CPR.M02.VP/AB-BA and -CA

Note: Errors and technical alterations reserved.  
The information is given in April 2017

Not recommended for new design.