



Chipsmall Limited consists of a professional team with an average of over 10 year of expertise in the distribution of electronic components. Based in Hongkong, we have already established firm and mutual-benefit business relationships with customers from,Europe,America and south Asia,supplying obsolete and hard-to-find components to meet their specific needs.

With the principle of “Quality Parts,Customers Priority,Honest Operation,and Considerate Service”,our business mainly focus on the distribution of electronic components. Line cards we deal with include Microchip,ALPS,ROHM,Xilinx,Pulse,ON,Everlight and Freescale. Main products comprise IC,Modules,Potentiometer,IC Socket,Relay,Connector.Our parts cover such applications as commercial,industrial, and automotives areas.

We are looking forward to setting up business relationship with you and hope to provide you with the best service and solution. Let us make a better world for our industry!



Contact us

Tel: +86-755-8981 8866 Fax: +86-755-8427 6832

Email & Skype: info@chipsmall.com Web: www.chipsmall.com

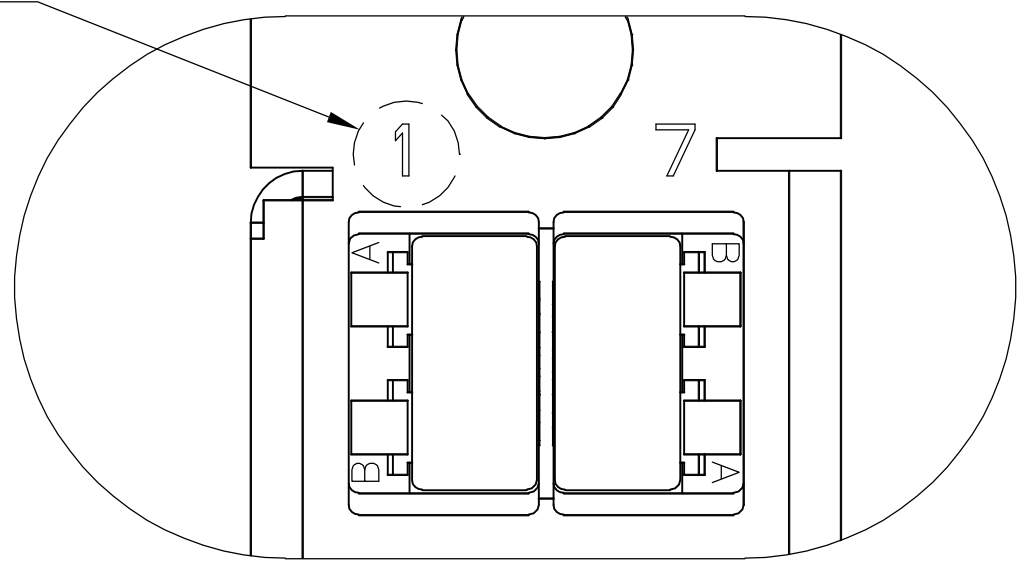
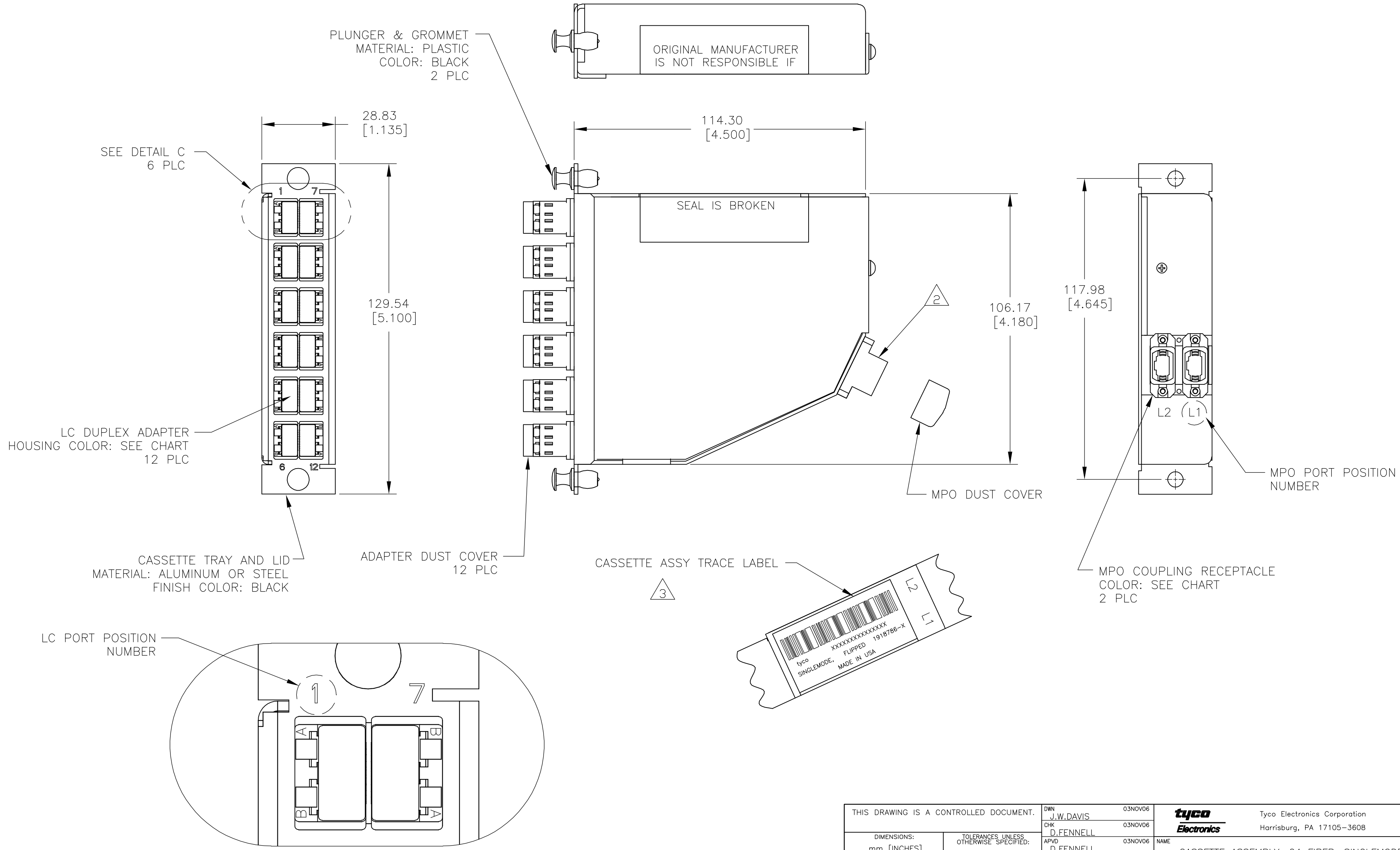
Address: A1208, Overseas Decoration Building, #122 Zhenhua RD., Futian, Shenzhen, China



LOC	DIST	REVISIONS					
CE	16	P	LTR	DESCRIPTION	DATE	DWN	APVD
		A		RELEASED	07FEB07	JWD	DLF

D
C
B
A

D
C
B
A



THIS DRAWING IS A CONTROLLED DOCUMENT.		DWN	J.W.DAVIS	03NOV06	tyco Electronics	Tyco Electronics Corporation Harrisburg, PA 17105-3608			
DIMENSIONS: mm [INCHES]		CHK	D.FENNELL	03NOV06		NAME	CASSETTE ASSEMBLY, 24 FIBER, SINGLEMODE MPO - LC PAIRS FLIPPED		
TOLERANCES UNLESS OTHERWISE SPECIFIED:		APVD	D.FENNELL	03NOV06	APPLICATION SPEC	SIZE	A2	CAGE CODE	00779
0 PLC ± -		PRODUCT SPEC		DRAWING NO		C=1918786		RESTRICTED TO	-
1 PLC ± -		APPLICATION SPEC		WEIGHT		SCALE		NTS	SHEET
2 PLC ± -		MATERIAL		CUSTOMER DRAWING		1 of 2		REV	A
3 PLC ± -		FINISH		SCALE		1 of 2		REV	A
4 PLC ± -		FINISH		SCALE		1 of 2		REV	A
ANGLES ± -		FINISH		SCALE		1 of 2		REV	A
FINISH		FINISH		SCALE		1 of 2		REV	A

1918786

THIS DRAWING IS UNPUBLISHED. RELEASED FOR PUBLICATION
 © COPYRIGHT BY TYCO ELECTRONICS CORPORATION. ALL RIGHTS RESERVED.

LOC	DIST	REVISIONS			
P	LTR	DESCRIPTION	DATE	DWN	APVD
CE	16	SEE SHEET 1	-	-	-

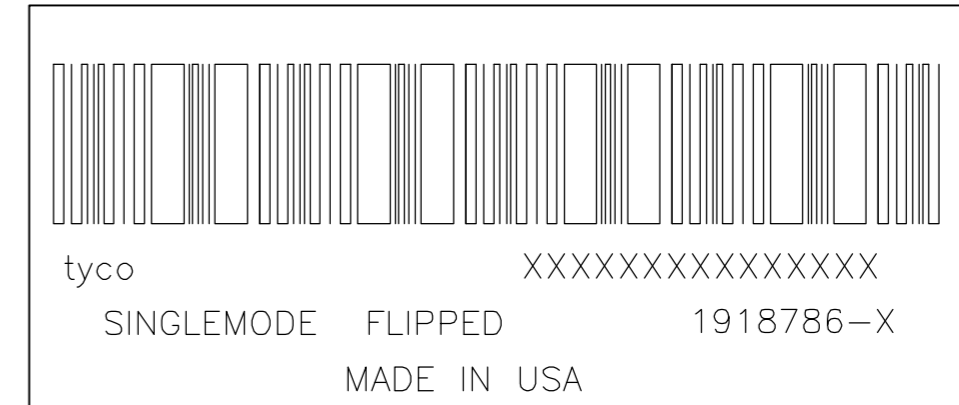
1. MAXIMUM CASSETTE ASSEMBLY LOSS: 1.25dB.

2. WHITE MARKING ON MPO TO BE FACING TOWARD TOP OF CONNECTOR MODULE. WHITE MARK INDICATES FIBER 1 SIDE

3. SEE TRACE LABEL DETAIL

4. A COPY OF CASSETTE ASSEMBLY LOSS TEST DATA WILL BE PLACED INSIDE OR WITH THE UNIT PACKAGE. CASSETTES WILL BE TESTED AT 1310nm & 1550nm WAVELENGTHS.

5. PRODUCT AND PROCESSING MUST MEET REQUIREMENTS OF TYCO ELECTRONICS STANDARD 230-702



FIBER PATH – PAIRS FLIPPED

MPO L1 PORT POSITION NO	MPO L2 PORT POSITION NO	LC PORT POSITION NO
1	-	1A
2	-	1B
3	-	2A
4	-	2B
5	-	3A
6	-	3B
7	-	4A
8	-	4B
9	-	5A
10	-	5B
11	-	6A
12	-	6B
-	1	7A
-	2	7B
-	3	8A
-	4	8B
-	5	9A
-	6	9B
-	7	10A
-	8	10B
-	9	11A
-	10	11B
-	11	12A
-	12	12B

BLACK STANDARD	AQUA SECURE	1-1918786-1
BLACK STANDARD	SLATE SECURE	1-1918786-0
BLACK STANDARD	ROSE SECURE	1918786-9
BLACK STANDARD	VIOLET SECURE	1918786-8
BLACK STANDARD	BROWN SECURE	1918786-7
BLACK STANDARD	ORANGE SECURE	1918786-6
BLACK STANDARD	YELLOW SECURE	1918786-5
BLACK STANDARD	BLUE SECURE	1918786-4
BLACK STANDARD	GREEN SECURE	1918786-3
BLACK STANDARD	RED SECURE	1918786-2
BLACK STANDARD	BLUE STANDARD	1918786-1
MPO COUPLING BUSHING COLOR & TYPE	LC ADAPTER COLOR & TYPE	PART NUMBER

THIS DRAWING IS A CONTROLLED DOCUMENT.		DWN J.W.DAVIS 03NOV06	Tyco Electronics Corporation Harrisburg, PA 17105-3608	
DIMENSIONS: mm [INCHES]		CHK D.FENNELL 03NOV06	NAME CASSETTE ASSEMBLY, 24 FIBER, SINGLEMODE MPO - LC PAIRS FLIPPED	
TOLERANCES UNLESS OTHERWISE SPECIFIED:		APVD D.FENNELL 03NOV06	PRODUCT SPEC	
0 PLC ± - 1 PLC ± - 2 PLC ± - 3 PLC ± - 4 PLC ± - ANGLES ± - FINISH -		APPLICATION SPEC	RESTRICTED TO	
MATERIAL -		WEIGHT -	SIZE A2	CAGE CODE 00779
		CUSTOMER DRAWING	DRAWING NO C=1918786	SCALE NTS
			SHEET 2 of 2	REV A

1918786