



Chipsmall Limited consists of a professional team with an average of over 10 year of expertise in the distribution of electronic components. Based in Hongkong, we have already established firm and mutual-benefit business relationships with customers from,Europe,America and south Asia,supplying obsolete and hard-to-find components to meet their specific needs.

With the principle of “Quality Parts,Customers Priority,Honest Operation,and Considerate Service”,our business mainly focus on the distribution of electronic components. Line cards we deal with include Microchip,ALPS,ROHM,Xilinx,Pulse,ON,Everlight and Freescale. Main products comprise IC,Modules,Potentiometer,IC Socket,Relay,Connector.Our parts cover such applications as commercial,industrial, and automotives areas.

We are looking forward to setting up business relationship with you and hope to provide you with the best service and solution. Let us make a better world for our industry!



## Contact us

Tel: +86-755-8981 8866 Fax: +86-755-8427 6832

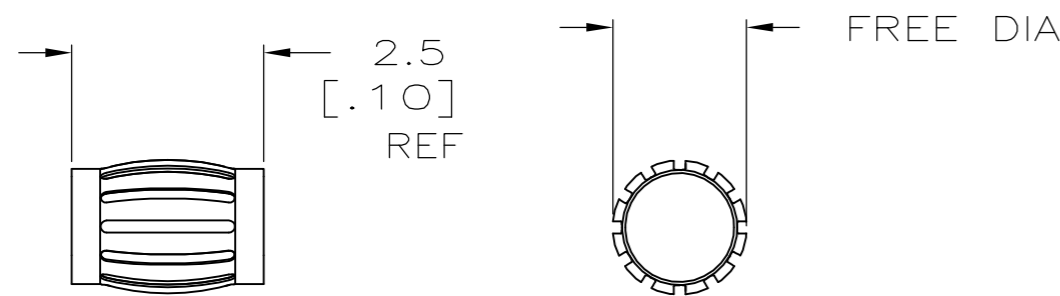
Email & Skype: info@chipsmall.com Web: www.chipsmall.com

Address: A1208, Overseas Decoration Building, #122 Zhenhua RD., Futian, Shenzhen, China

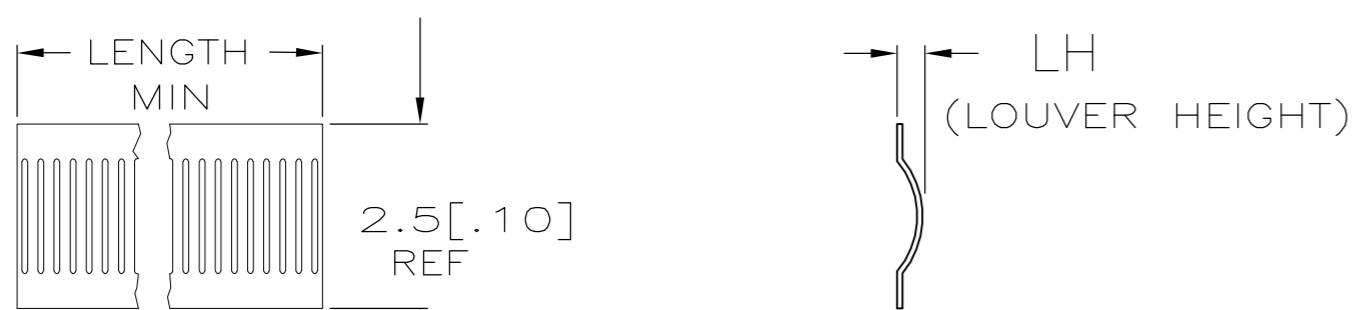


THIS DRAWING IS UNPUBLISHED. RELEASED FOR PUBLICATION  
 © COPYRIGHT - By - ALL RIGHTS RESERVED.

LOC	DIST	REVISIONS			
P	LTR	DESCRIPTION	DATE	DWN	APVD
CH	11	H	REVISED PER ECO-15-011611	05NOV2015	NK MZ



STYLE B  
(MALE)



STYLE C  
(STRIP)

- ① FINISH—SILVER PLATE 200μIN THICK MIN.
- 2 FINISH—NICKEL PLATE 40μIN THICK MIN.
- 3 FINISH—GOLD PLATE 10μIN THICK MIN.
- 4 FINISH—GOLD PLATE 20μIN THICK MIN.
- 5 PLATING NOTES ARE TO BE INTERPRETED AS FOLLOWS, 3-2 AS 3 OVER 2.
- 6 PRODUCT IS SOLD BY THE FOOT.
- 7 72 INCH STRIP WOUND TO A ONE INCH INSIDE DIAMETER.
- 8 MATERIAL—BeCu (CDA172).
- ⑨ PRELIMINARY PART NUMBER
- ⑩ OBSOLETE PARTS: OBSOLETE CIS STREAMLINING PER D.RENAUD/D.SINISI

STYLE	FREE DIA	LENGTH	LH	MAT'L (NOTE)	MATING DIA REF	PLATING (NOTE)	NUM LOUV	MAT'L THK	REF	PART NO.
⑨ B	.375	--	[.014]	8	9.5 [.375]	4-2	40	0.10 [.004]	--	2-192048-6
⑩ OBSOLETE B	.06	--	[.012]	8	1.7 [.067]	1-2	5	0.10 [.004]	--	2-192048-5
B	.20	--	[.014]	--	--	3-2	20	0.10 [.004]	--	2-192048-4
⑩ OBSOLETE --	--	--	--	--	--	--	--	--	--	2-192048-3
--	--	--	--	--	--	--	--	--	--	2-192048-2
B	.06	--	[.012]	8	--	UNPL	5	0.10 [.004]	--	2-192048-1
C	--	NOTE 6	[.014]	8	--	UNPL	--	0.10 [.004]	--	2-192048-0
OBSOLETE	NOT AVAILABLE									06802 1-192048-9
OBSOLETE B	.65	--	[.012]	8	16.6 [.655]	2	71	0.10 [.004]	06050	1-192048-8
⑩ B	.65	--	[.012]	8	16.6 [.655]	UNPL	71	0.10 [.004]	06049	1-192048-7
OBSOLETE	NOT AVAILABLE									06036 1-192048-6
OBSOLETE B	.59	--	[.012]	8	15.2 [.600]	UNPL	65	0.10 [.004]	06030	1-192048-5
⑩ B	.28	--	[.012]	8	7.3 [.288]	UNPL	30	0.10 [.004]	06028	1-192048-4
B	.16	--	[.012]	8	4.4 [.175]	3-2	17	0.10 [.004]	06038	1-192048-3
B	.16	--	[.012]	8	4.4 [.175]	UNPL	17	0.10 [.004]	06039	1-192048-2
B	.13	--	[.016]	8	3.2 [.127]	4-2	11	0.10 [.004]	06031	1-192048-1
OBSOLETE B	.13	--	[.016]	8	3.2 [.127]	UNPL	11	0.10 [.004]	06034	1-192048-0
⑩ B	--	--	[.016]	8	3.2 [.127]	4-2	11	0.08 [.003]	06072	192048-9
OBSOLETE B	.13	--	[.016]	8	3.2 [.127]	UNPL	11	0.08 [.003]	06071	192048-8
B	.06	--	[.012]	8	1.7 [.067]	4-2	5	0.10 [.004]	06060	192048-7
OBSOLETE B	.05	--	[.016]	8	1.3 [.051]	4-2	4	0.10 [.004]	06058	192048-6
⑩ OBSOLETE B	.05	--	[.016]	8	1.3 [.051]	UNPL	4	0.10 [.004]	06015	192048-5
OBSOLETE	NOT AVAILABLE									06059 192048-4
⑩ OBSOLETE C	--	NOTE 7	[.014]	8	--	4-2	--	0.10 [.004]	06032	192048-3
C	--	NOTE 6	[.014]	8	--	3-2	--	0.10 [.004]	06051	192048-2
C	--	NOTE 7	[.014]	8	--	UNPL	--	0.10 [.004]	06033	192048-1

THIS DRAWING IS A CONTROLLED DOCUMENT. DWN RA JAYNE 06-12-92  
 CHK --  
 APVD --  
 PRODUCT SPEC --  
 APPLICATION SPEC --  
 WEIGHT --  
 CUSTOMER DRAWING

**STE** TE Connectivity  
 CONTACT BAND, MALE

SIZE A2 CAGE CODE 00779 DRAWING NO C=192048 RESTRICTED TO --  
 SCALE NTS SHEET 1 OF 1 REV H