



Chipsmall Limited consists of a professional team with an average of over 10 year of expertise in the distribution of electronic components. Based in Hongkong, we have already established firm and mutual-benefit business relationships with customers from,Europe,America and south Asia,supplying obsolete and hard-to-find components to meet their specific needs.

With the principle of “Quality Parts,Customers Priority,Honest Operation,and Considerate Service”,our business mainly focus on the distribution of electronic components. Line cards we deal with include Microchip,ALPS,ROHM,Xilinx,Pulse,ON,Everlight and Freescale. Main products comprise IC,Modules,Potentiometer,IC Socket,Relay,Connector.Our parts cover such applications as commercial,industrial, and automotives areas.

We are looking forward to setting up business relationship with you and hope to provide you with the best service and solution. Let us make a better world for our industry!



Contact us

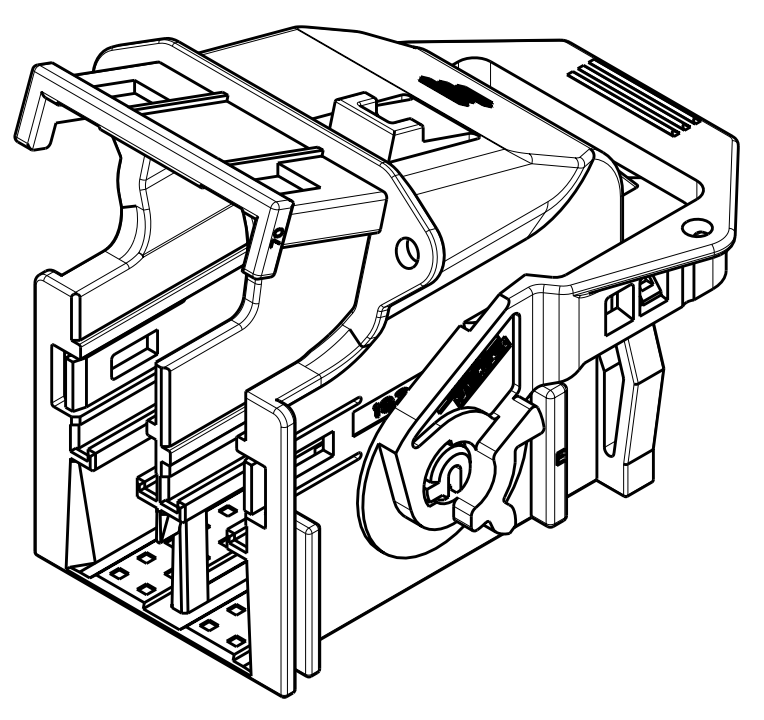
Tel: +86-755-8981 8866 Fax: +86-755-8427 6832

Email & Skype: info@chipsmall.com Web: www.chipsmall.com

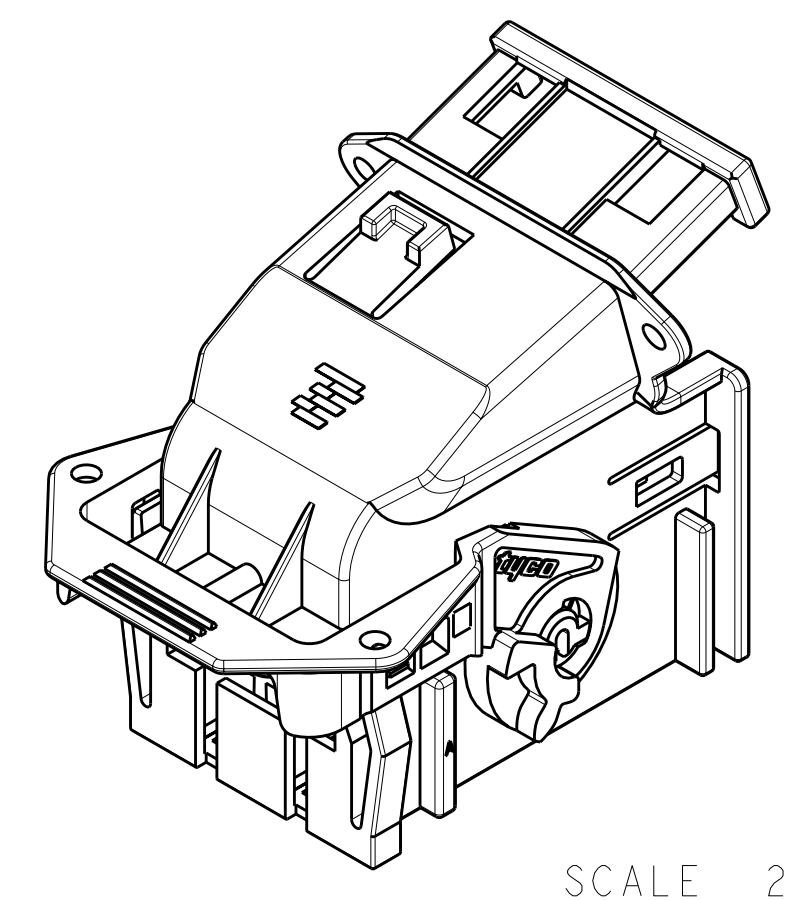
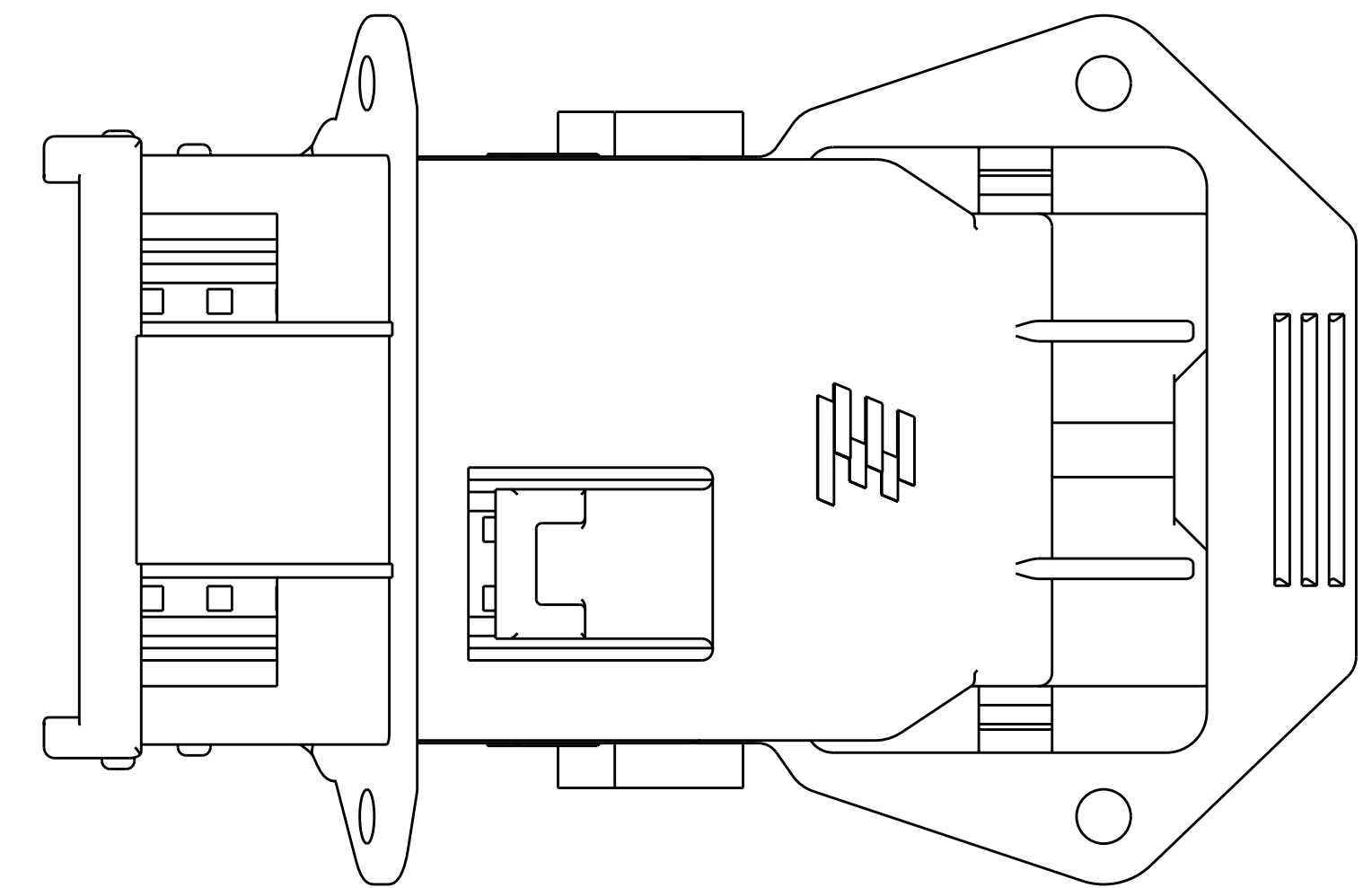
Address: A1208, Overseas Decoration Building, #122 Zhenhua RD., Futian, Shenzhen, China



LOC	DIST	REVISIONS			
IN	00	REV	DATE	BY	APPD
		A	RELEASED PER ECO-08-001177	18JAN2008	RGV RDH
		A1	REVISED PER ECO-08-018839	31JUL2008	DLD CJS
		A2	REVISED PER ECO-09-009935	05MAR2009	DLD JLA

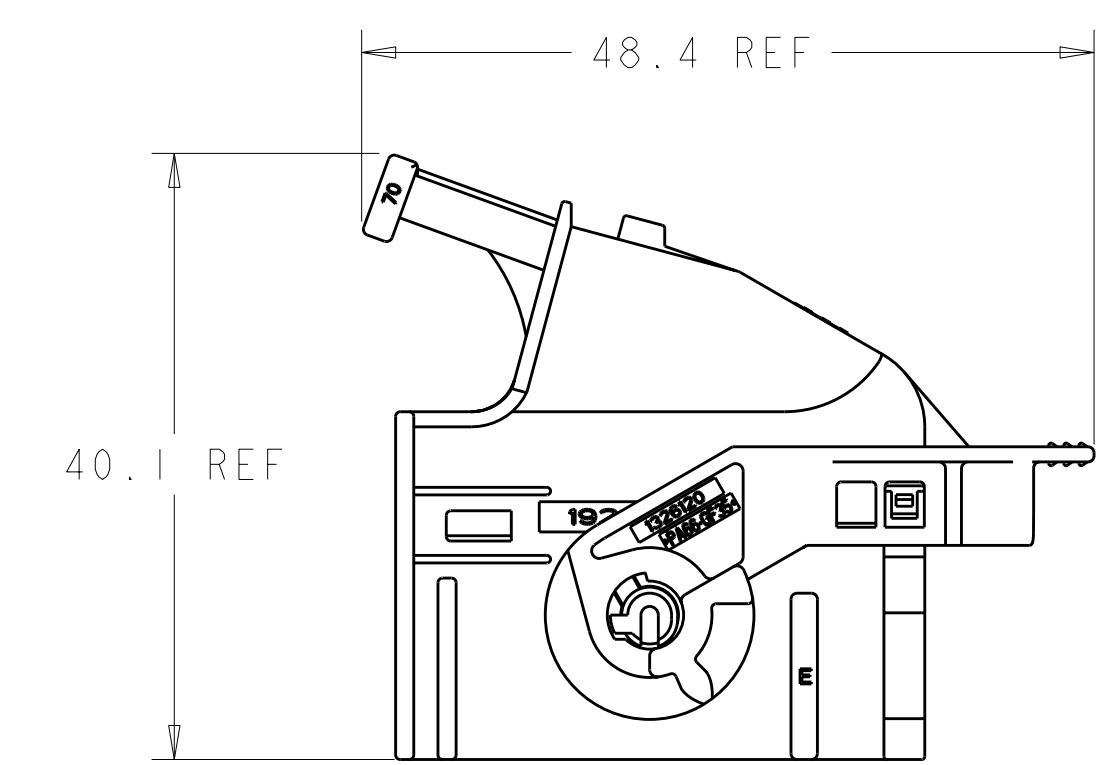
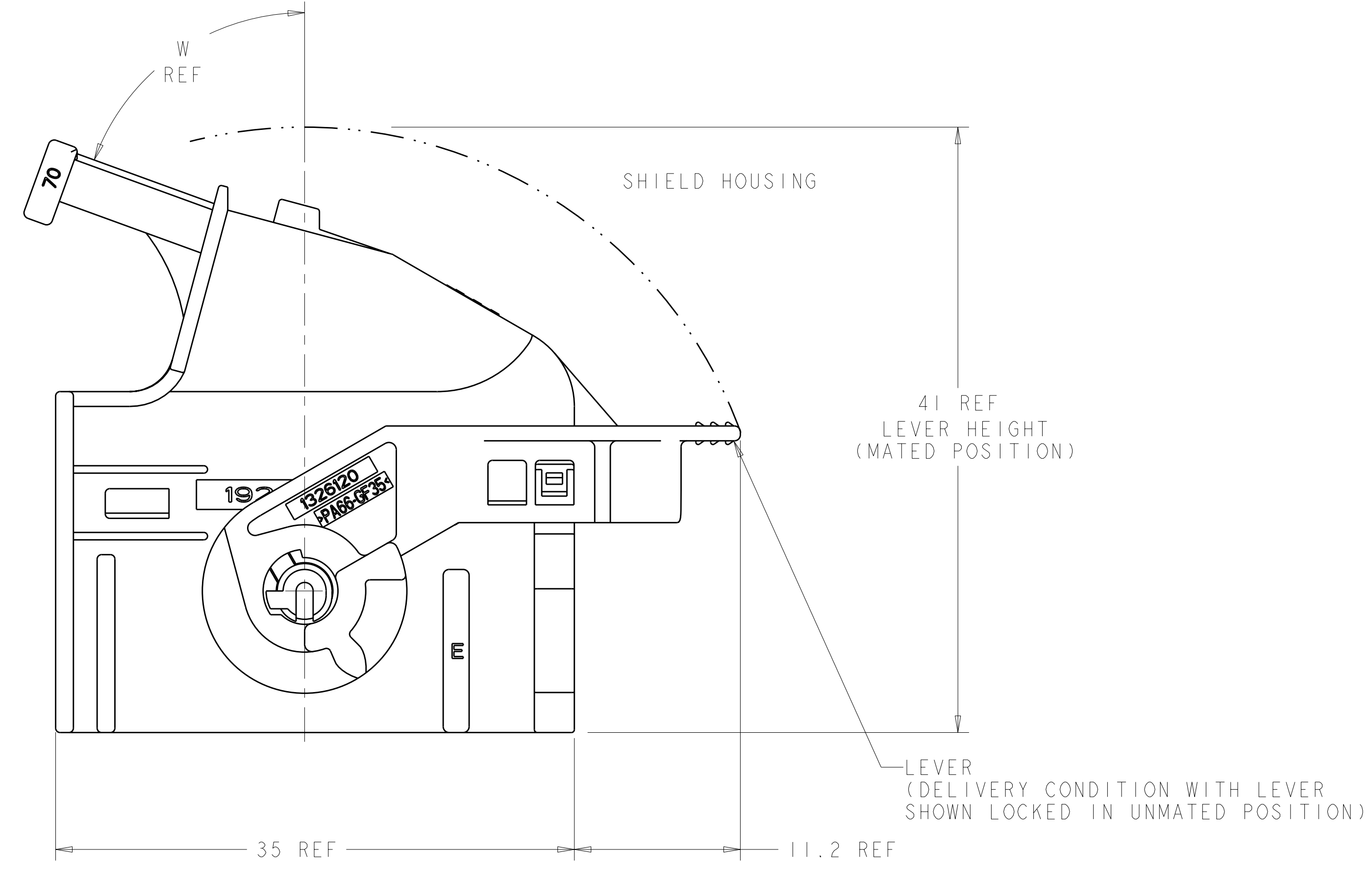
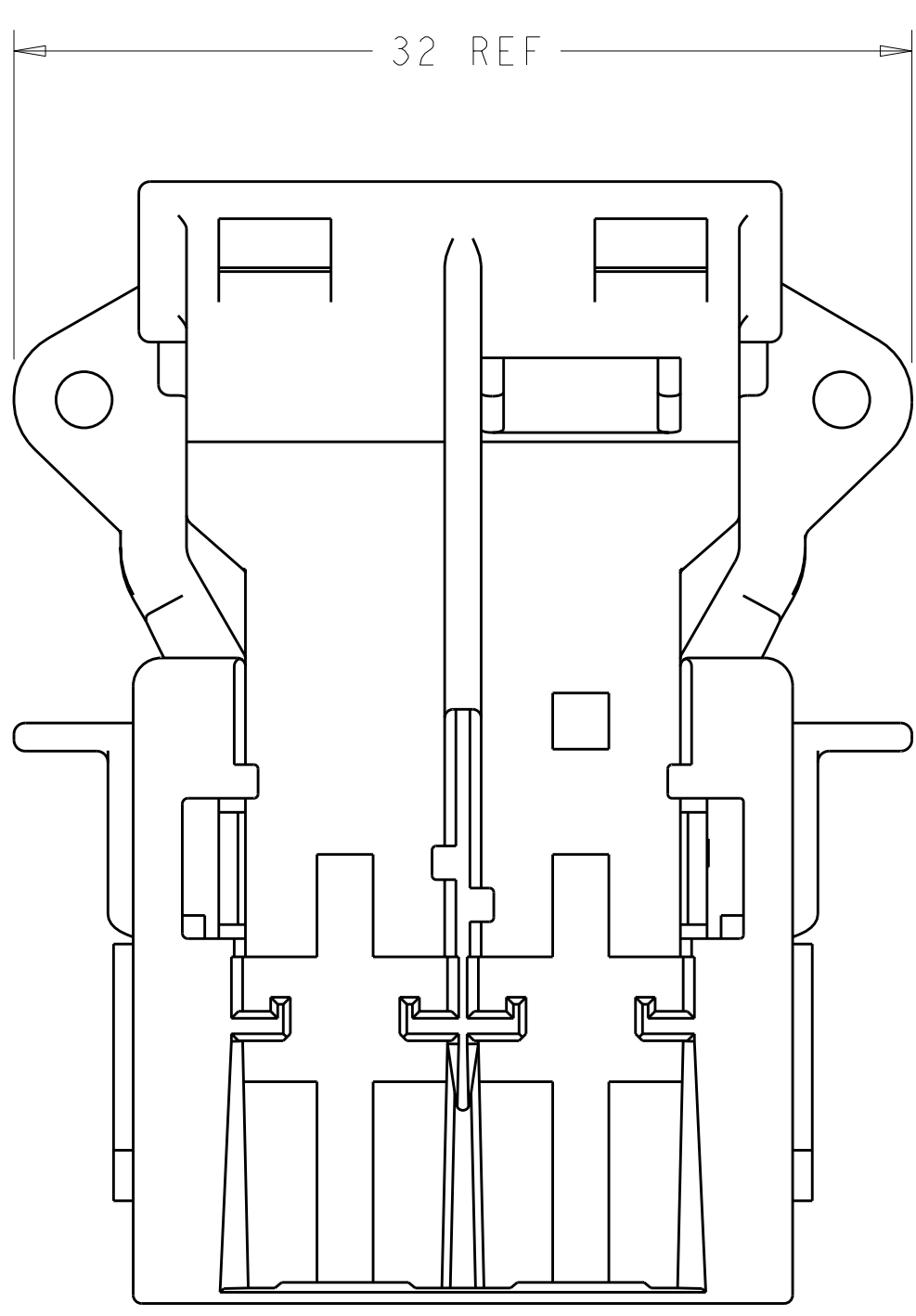


SCALE 2:1

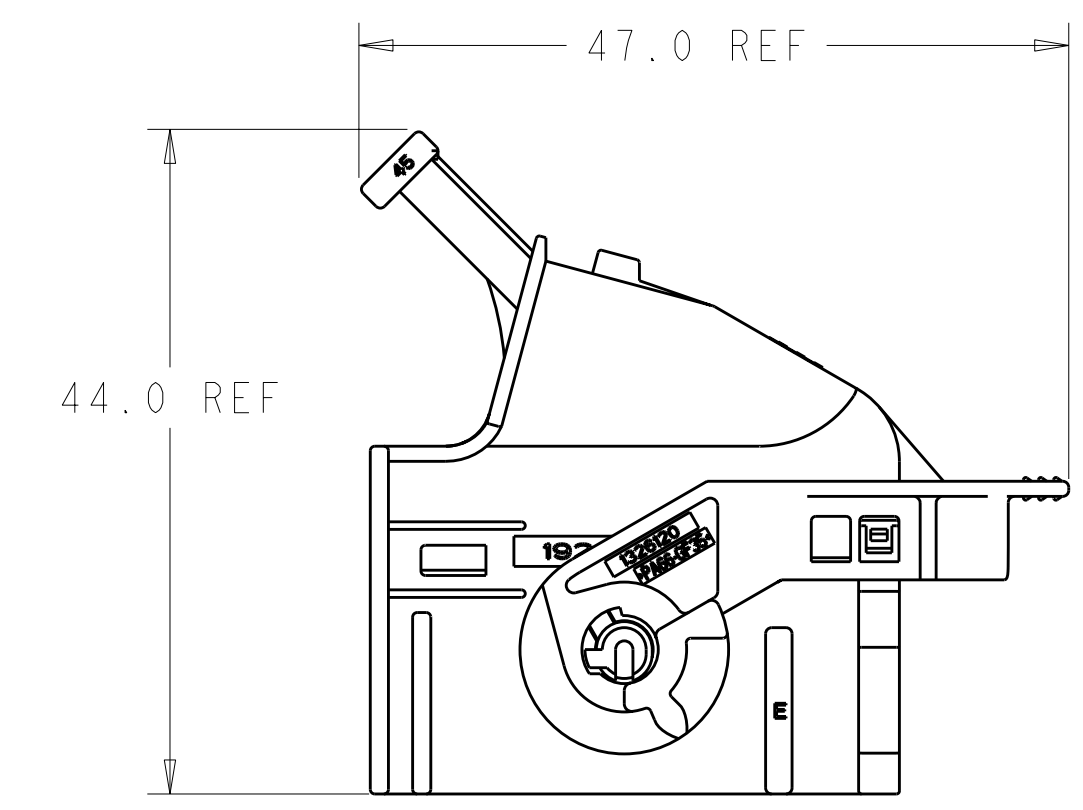


SCALE 2:1

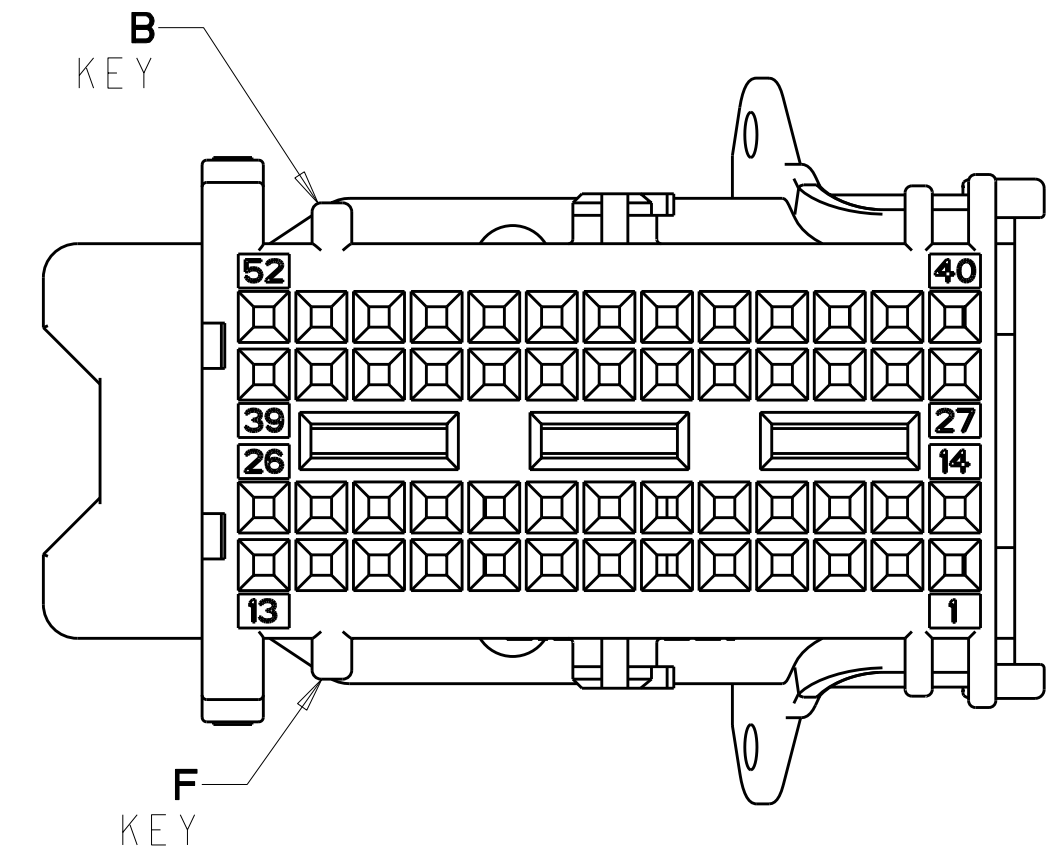
- △ MATERIAL: SHIELD - 35% GLASS REINFORCED NYLON.
SEE TABLE BELOW FOR COLOR.
LEVER - 35% GLASS REINFORCED NYLON.
COLOR: DARK GREY.
- 2. REFERENCE: RECEPTACLE HOUSING, 1924136-1 & 1924136-2,
USED WITH THIS ASSEMBLY.
- 3. REFERENCE: INTERFACE DETAIL PER DRAWING NO.
AAU01000-2962-0010 AND TE DRAWING NO. 1438985-GEN.



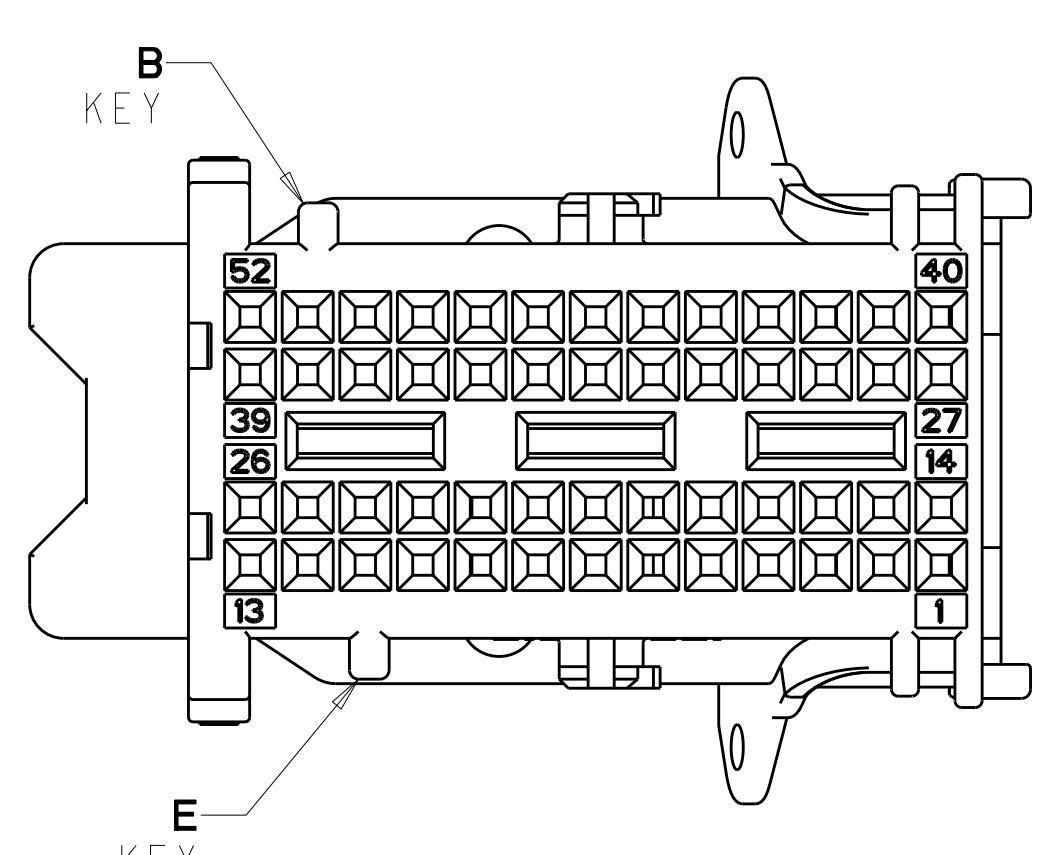
70° WIRE EXIT
SCALE 2:1



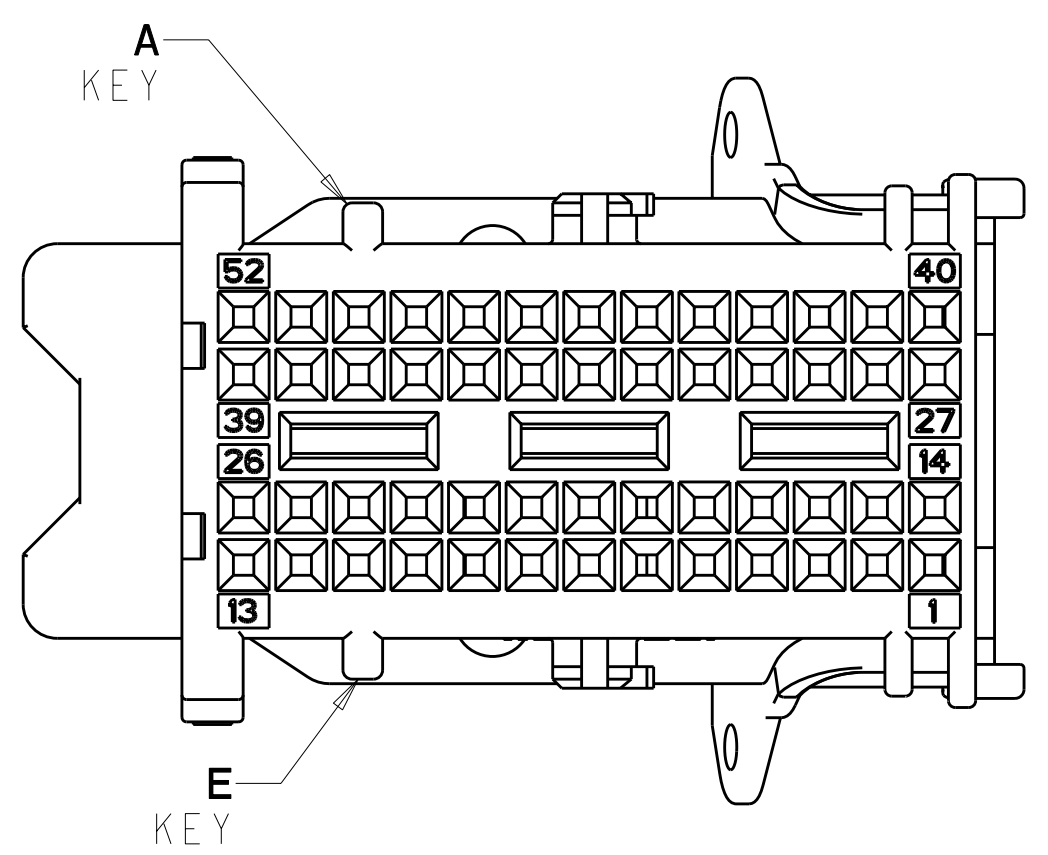
45° WIRE EXIT
SCALE 2:1



KEY B-F SHOWN FOR
ASSEMBLY 1924346-3
& 1924346-6



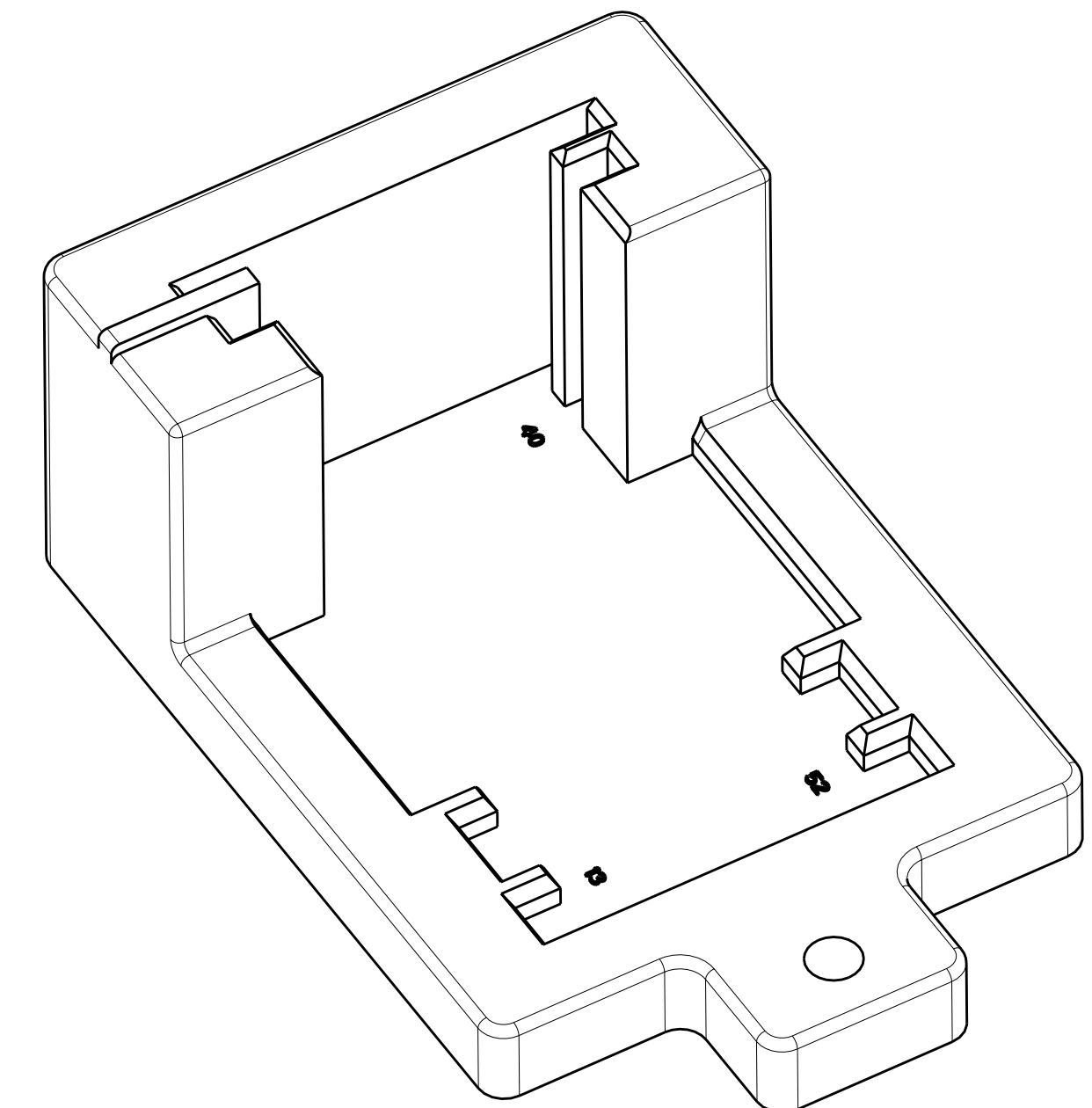
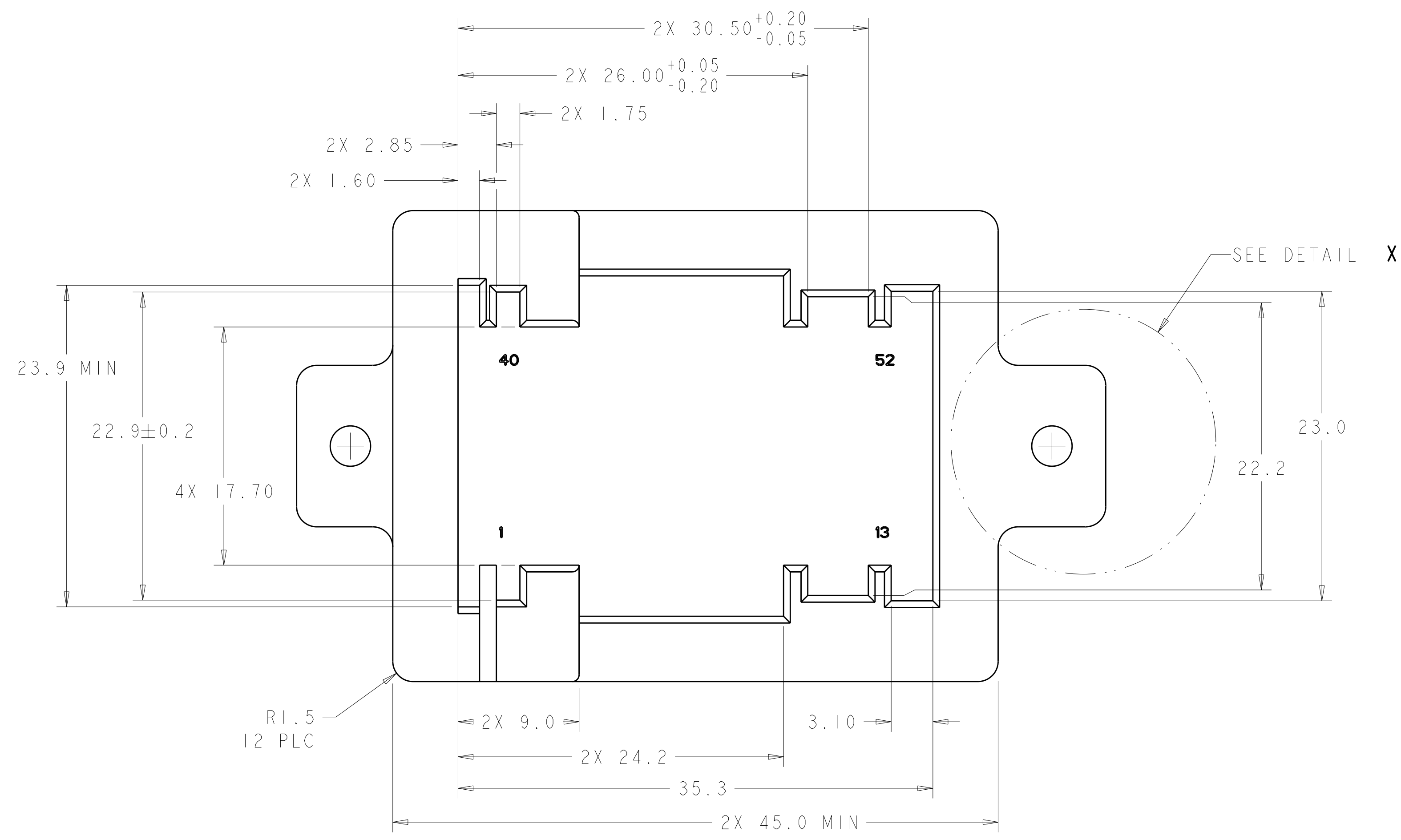
KEY B-E SHOWN FOR
ASSEMBLY 1924346-2
& 1924346-5



KEY A-E SHOWN FOR
ASSEMBLY 1924346-1
& 1924346-4

DIM W	COLOR	KEYING OPT.	PART NUMBER
45°	BLUE	B-F	1924346-6
45°	GRAY	B-E	1924346-5
45°	BLACK	A-E	1924346-4
70°	BLUE	B-F	1924346-3
70°	GRAY	B-E	1924346-2
70°	BLACK	A-E	1924346-1

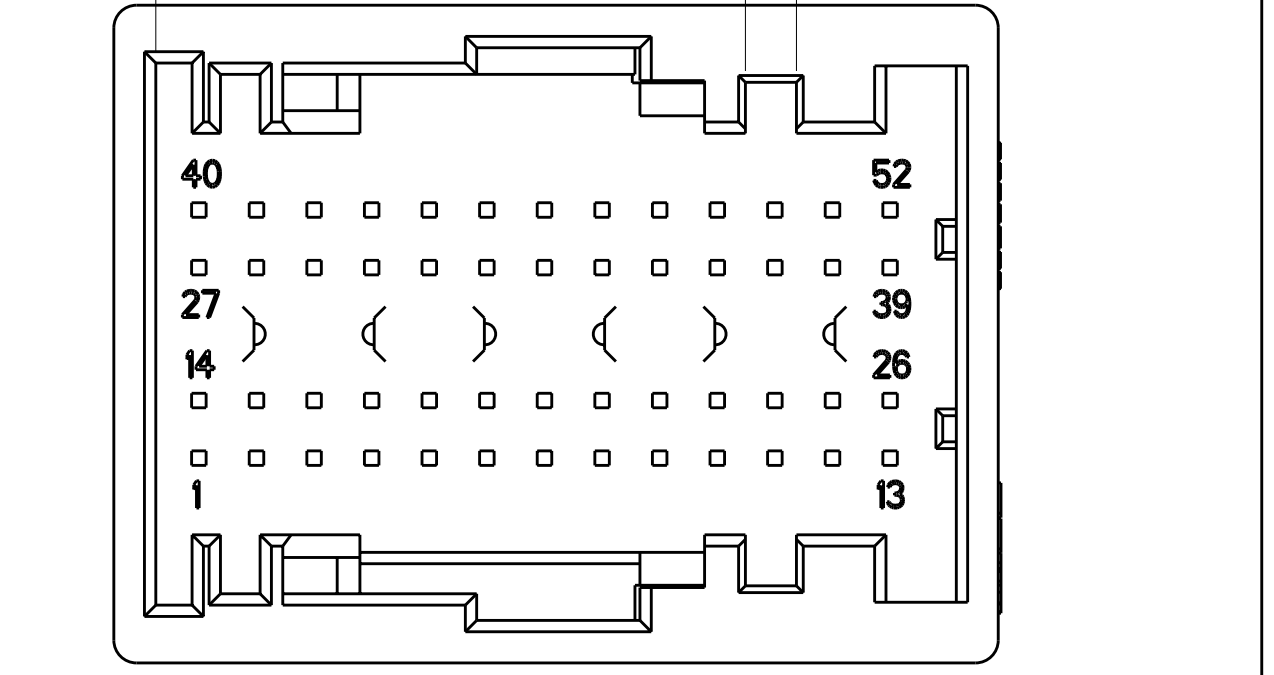
DIMENSIONS: mm 		TOLERANCES UNLESS OTHERWISE SPECIFIED: 9 PLC ± 1 PLC ±0.2 5 PLC ±0.05 4 PLC ± ANGLES ± FINISH		DWN: FOLTZ 24OCT2007 CHK: G. MARTIN 24OCT2007 APVD: G. MARTIN 24OCT2007 NAME: SHIELD ASSEMBLY, 52 POSITION, LEVER ASSISTED, 0.64mm GENERATION Y, CONNECTOR SIZE: CAGE CODE DRAWING NO. RESTRICTED TO: A1 00779 C=1924346 WEIGHT: CUSTOMER DRAWING		Tyco Electronics Harrisburg, PA 17105-3608 Tyco Electronics logo	
MATERIAL: △		FINISH:		SCALE: 4:1 SHEET 1 OF 2 REV A2		AMP 4805 REV 31MAR2000 Pro/ENGINEER DRAWING	



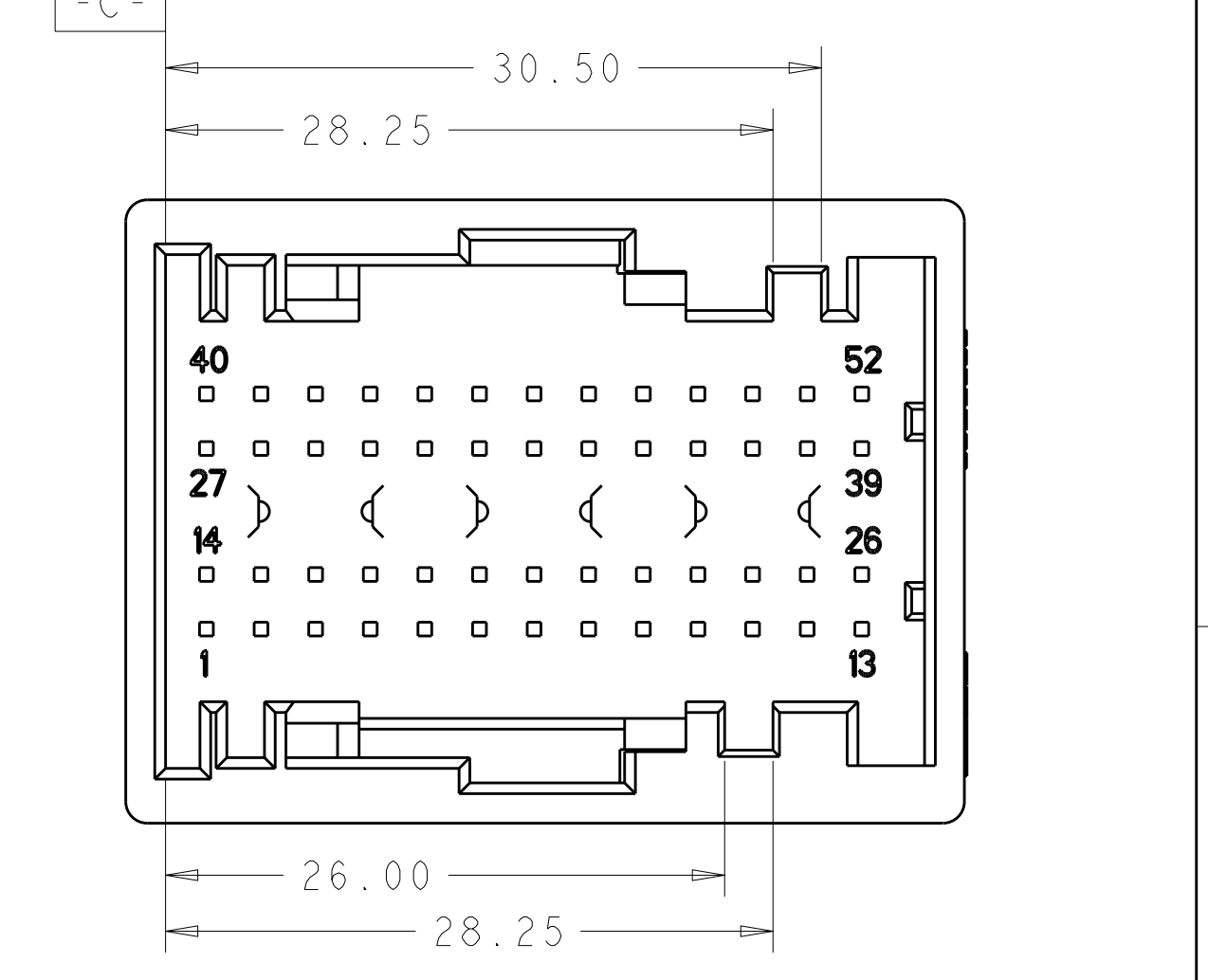
SCALE 3:1

LOC	DIST	REV	DATE	BY	APPD
1N	00				

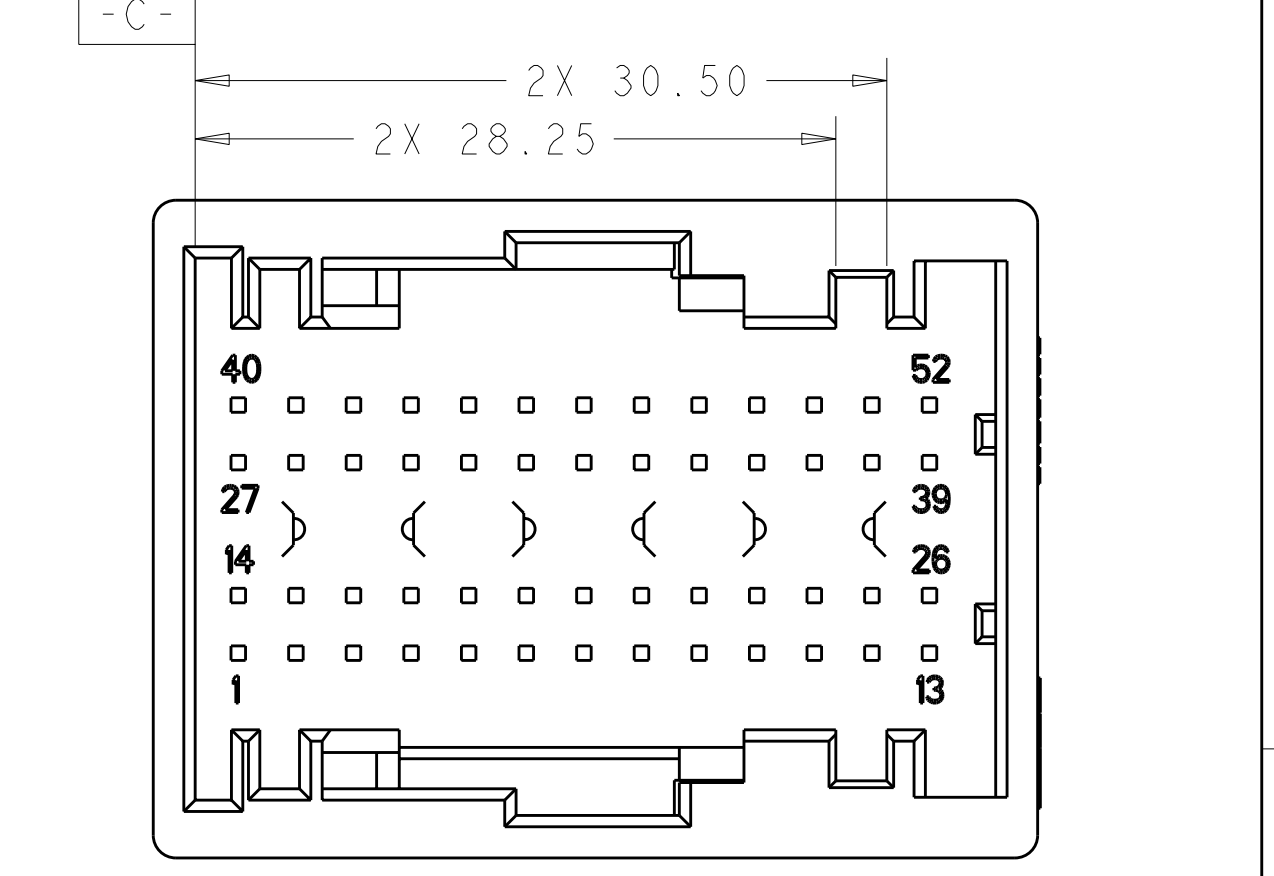
REVISIONS		DATE	BY	APPD
-	SEE SHEET 1			



KEY OPTION A-E

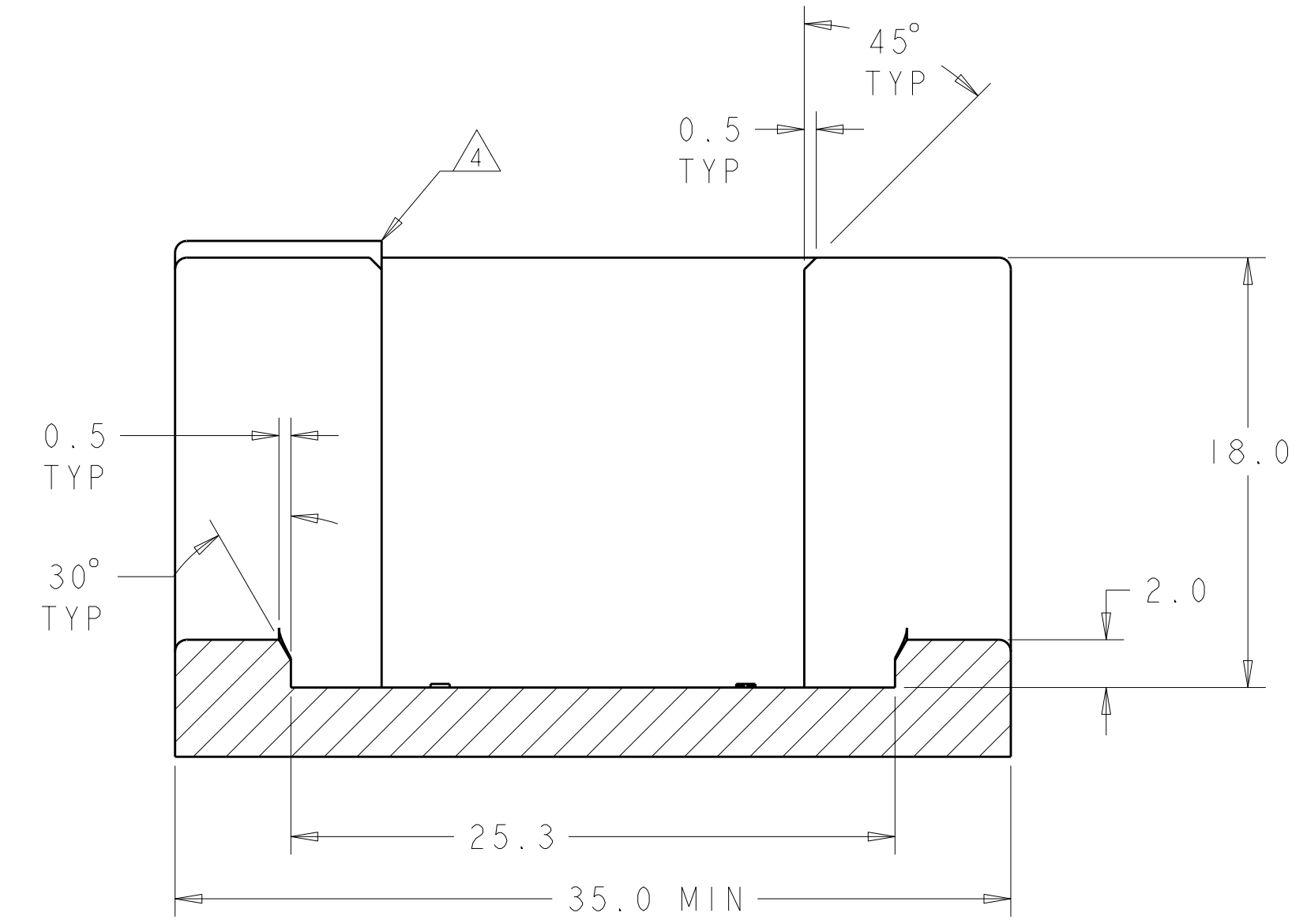
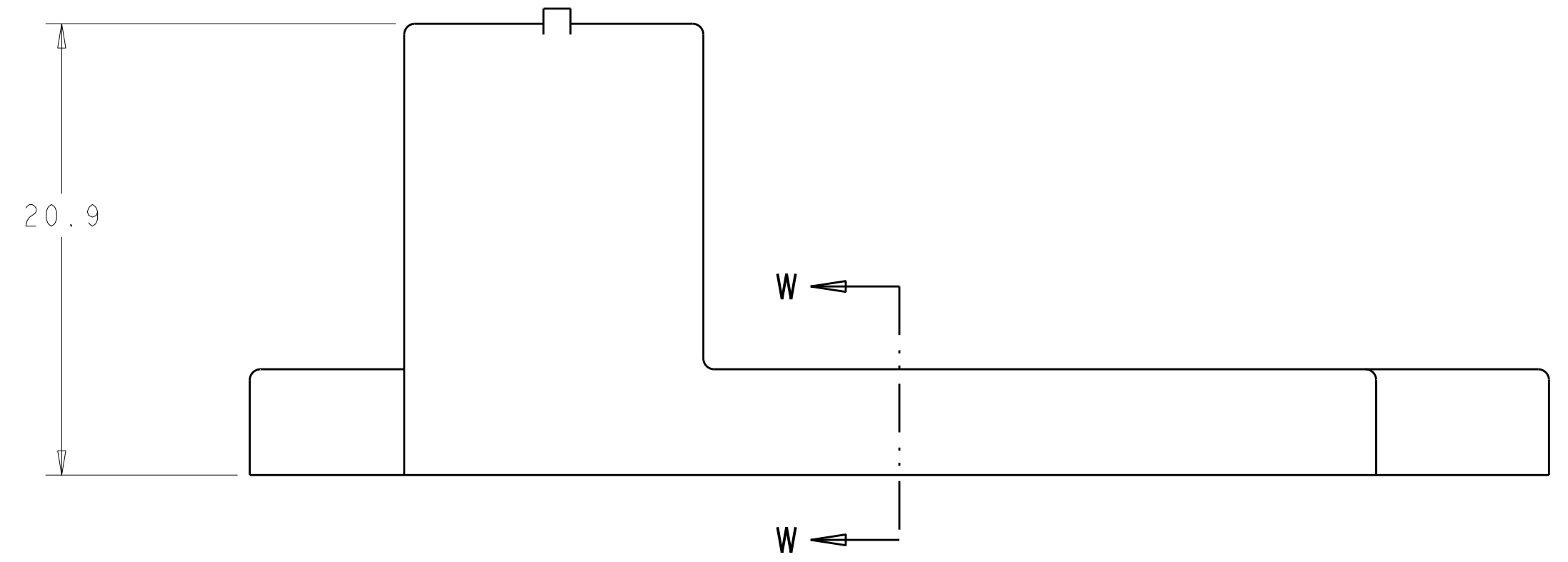


KEY OPTION B-E

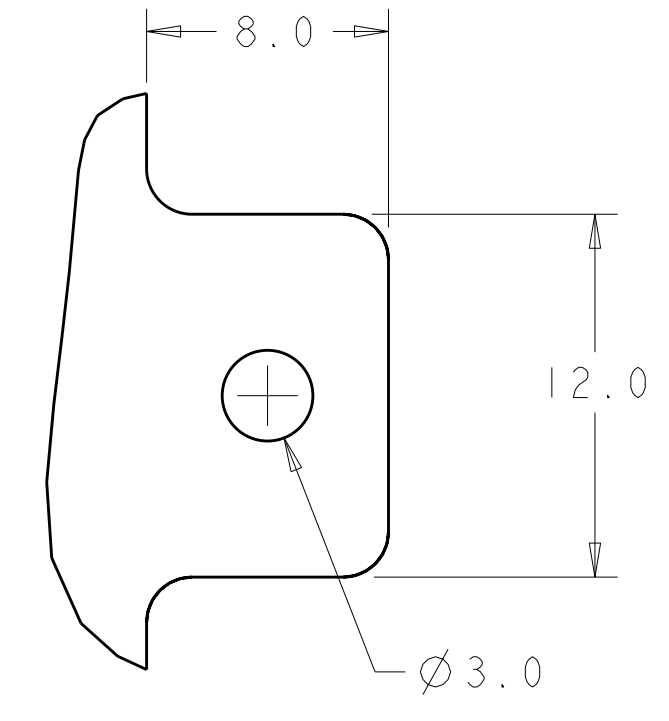


KEY OPTION B-F

KEYING OPTIONS



SECTION W-W



DETAIL X
SCALE 4:1

52 POSITION CONNECTOR FIXTURE
 (SHOWN WITH CLEARANCE FOR ALL KEY OPTIONS)

- CONNECTOR FIXTURE SHOULD BE USED TO VERIFY THE RECEPTACLE CARRIER IS PROPERLY SEATED AND LOCKED INTO THE SHIELD ASSEMBLY. THE CONNECTOR WILL NOT FULLY MATE TO THE FIXTURE IF THE RECEPTACLE CARRIER IS OUT OF POSITION.
- RECOMMEND USING A SENSING DEVICE FOR VERIFYING FULLY MATED CONNECTORS. SUCH A DEVICE IS AT THE CUSTOMERS DISCRETION.
- RECOMMENDED MATERIAL: HARDENED STEEL.
- NO RADII OR CHAMFER PERMITTED IN SPECIFIED AREA. MUST MAINTAIN 90° EDGE.
- RADII TO BE 0.5 UNLESS OTHERWISE SPECIFIED.
- OPTIONAL CONSTRAINT FEATURE.

DIMENSIONS:		TOLERANCES UNLESS OTHERWISE SPECIFIED:		DWN: FOLTZ 24OCT2007		Tyco Electronics Harrisburg, PA 17105-3608	
mm	9 PLC ±0.2	1 PLC ±0.2	5 PLC ±0.05	4 PLC ±	ANGLES ±1°	CHK: G. MARTIN 24OCT2007	NAME: SHIELD ASSEMBLY, 52 POSITION, LEVER ASSISTED, 0.64mm GENERATION Y, CONNECTOR
MATERIAL: 3	FINISH:	APVD: G. MARTIN 24OCT2007	PRODUCT SPEC:	APPLICATION SPEC:	WEIGHT:	SIZE: A11 00779	DRAWING NO: C=1924346
CUSTOMER DRAWING				SCALE: 4:1	SHEET: 2 OF 2	REV: A2	RESTRICTED TO: