



Chipsmall Limited consists of a professional team with an average of over 10 year of expertise in the distribution of electronic components. Based in Hongkong, we have already established firm and mutual-benefit business relationships with customers from,Europe,America and south Asia,supplying obsolete and hard-to-find components to meet their specific needs.

With the principle of “Quality Parts,Customers Priority,Honest Operation,and Considerate Service”,our business mainly focus on the distribution of electronic components. Line cards we deal with include Microchip,ALPS,ROHM,Xilinx,Pulse,ON,Everlight and Freescale. Main products comprise IC,Modules,Potentiometer,IC Socket,Relay,Connector.Our parts cover such applications as commercial,industrial, and automotives areas.

We are looking forward to setting up business relationship with you and hope to provide you with the best service and solution. Let us make a better world for our industry!



## Contact us

Tel: +86-755-8981 8866 Fax: +86-755-8427 6832

Email & Skype: info@chipsmall.com Web: www.chipsmall.com

Address: A1208, Overseas Decoration Building, #122 Zhenhua RD., Futian, Shenzhen, China





## COMBICON Spring Cage Plugs and Headers with Self-Locking Flange 5.08 mm Pitch

---

The new FKC-RF spring cage plug offers a new locking system: the fast plug locking system based on the "click'n lock" principle. When the plug is inserted into the MSTBA-RN header, the snap-in flanges on the sides audibly clip in behind the molded engagement latches. This ensures the plug cannot be inadvertently disconnected. Disconnection is easy thanks to the ergonomically formed locking levers which simply have to be pressed down, thus allowing the plug to be pulled off the header. The "click'n lock" principle functions in the same way when the FKC-RF plug is connected to the inverted FKIC-RN plug for a free-hanging wire connection.

**Note:**

Plugs and headers with a 5.0 mm pitch can be supplied on request.

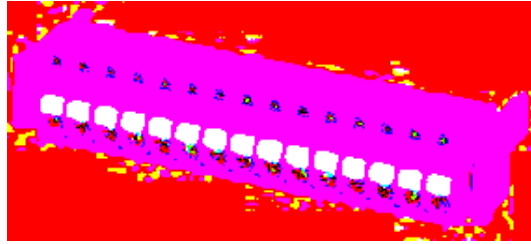
Other types available with the "click'n lock" fast locking system include:

- MSTB 2,5 screw connection plugs,
- Vertical plugs with a screw or spring cage connection and
- front screw connection plugs.



# FKC 2,5/...-ST-5,08-RF

## 5.08 mm Pitch



### Note:

COMBICON plug connectors may only be actuated in the no-load condition. If smaller loads need to be switched for operational reasons, experimental values are available on request.

Description	No. of pos.	Dim. a [mm]	Type	Order No.	Pcs./Pkt.
<b>Plugs with self-locking flange, 5.08 mm pitch, color: green,</b>	2	5.08	<b>FKC 2,5/2-ST-5,08-RF</b>	<b>19 25 69 2</b>	50
	3	10.16	<b>FKC 2,5/3-ST-5,08-RF</b>	<b>19 25 70 2</b>	
	4	15.24	<b>FKC 2,5/4-ST-5,08-RF</b>	<b>19 25 71 5</b>	
	5	20.32	<b>FKC 2,5/5-ST-5,08-RF</b>	<b>19 25 72 8</b>	
	6	25.40	<b>FKC 2,5/6-ST-5,08-RF</b>	<b>19 25 73 1</b>	
	7	30.48	<b>FKC 2,5/7-ST-5,08-RF</b>	<b>19 25 74 4</b>	
	8	35.56	<b>FKC 2,5/8-ST-5,08-RF</b>	<b>19 25 75 7</b>	
	9	40.64	<b>FKC 2,5/9-ST-5,08-RF</b>	<b>19 25 76 0</b>	
	10	45.72	<b>FKC 2,5/10-ST-5,08-RF</b>	<b>19 25 77 3</b>	
	11	50.80	<b>FKC 2,5/11-ST-5,08-RF</b>	<b>19 25 78 6</b>	
	12	55.88	<b>FKC 2,5/12-ST-5,08-RF</b>	<b>19 25 79 9</b>	
	13	60.96	<b>FKC 2,5/13-ST-5,08-RF</b>	<b>19 25 80 9</b>	
	14	66.04	<b>FKC 2,5/14-ST-5,08-RF</b>	<b>19 25 81 2</b>	
	15	71.12	<b>FKC 2,5/15-ST-5,08-RF</b>	<b>19 25 82 5</b>	
	16	76.20	<b>FKC 2,5/16-ST-5,08-RF</b>	<b>19 25 83 8</b>	
	17	81.26	<b>FKC 2,5/17-ST-5,08-RF</b>	<b>19 25 84 1</b>	
	18	86.36	<b>FKC 2,5/18-ST-5,08-RF</b>	<b>19 25 85 4</b>	

(1) **Coding profile**, is inserted into the groove on the plug, insulating material: red



<b>CP-MSTB</b>	<b>17 34 63 4</b>	100
----------------	-------------------	-----

(2) **Strain relief**, for snapping into the latching chambers of the plugs



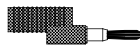
<b>STZ 4-FKC-5,08</b>	<b>18 76 87 7</b>	10
<b>STZ 8-FKC-5,08</b>	<b>18 76 88 0</b>	

(3) **Test plug**, consisting of metal part and colored insulating sleeve; Order data, see COMBICON catalog



<b>MPS-...</b> (see COMBICON catalog)		
---------------------------------------	--	--

(4) **Reducing plug**, for connecting a 4 mm Ø test plug to a 2.3 mm Ø test plug socket, insulation: gray



<b>RPS</b>	<b>02 01 64 7</b>	10
------------	-------------------	----

(5) **Screwdriver**, for releasing the spring blade: 0.6 x 3.5 x 100 mm, length: 180 mm



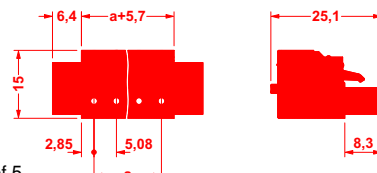
<b>SZS 0,6 x 3,5</b>	<b>12 05 05 3</b>	10
----------------------	-------------------	----

(6) **Marker card**, with 12 pcs. 10-section marker strips, white, self-adhesive, for 120 terminal blocks

<b>SK 5,08/3,8</b> (see COMBICON catalog)		
---	--	--

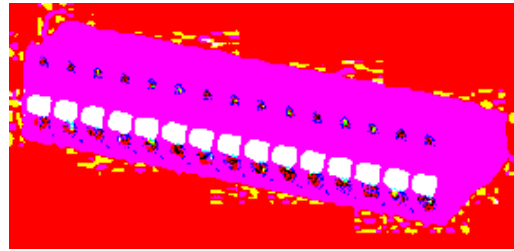
### Technical data

Dimensions		see description
Pitch	[mm]	5.08
<b>Technical data in accordance with IEC/ DIN VDE</b>		
Insulating material group	-	I
Surge voltage category / contamination class	-/-	III / 3 III / 2 II / 2
Rated voltage	[V]	250 320 630
Rated surge voltage	[kV]	4 4 4
Nominal current / cross section	[A]/[mm²]	12 / 2.5
Maximum load current / cross section	[A]/[mm²]	12 / 2.5
<b>Connection capacity</b>		
Solid / stranded / conductor sizes	[mm²]/[mm²]/AWG	0.2 - 2.5 / 0.2 - 2.5 / 24 - 12
Stranded with ferrule without / with plastic sleeve	[mm²]	0.25 - 2.5 / 0.25 - 2.5
<b>Multiple connection (2 conductors with same cross section)</b>		
Stranded with TWIN ferrule with plastic sleeve	[mm²]	0.5 - 1
<b>Stripping length</b>	[mm]	10
<b>Internal cylindrical gauge (IEC 60 947-1)</b>	-	A 2
<b>Insulating material</b>		PA
Inflammability class in acc. with UL 94		V0





# FKIC 2,5/...-ST-5,08-RN 5.08 mm Pitch



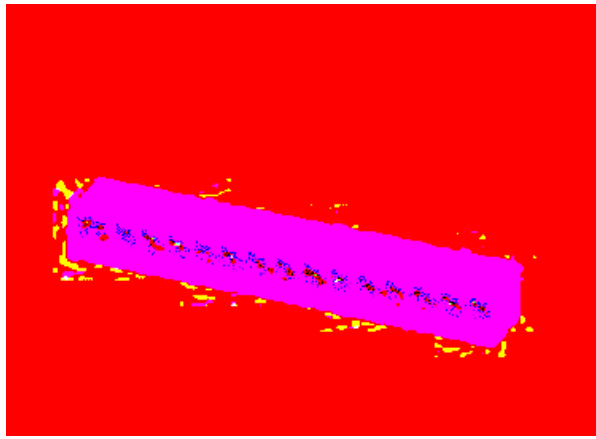
**Note:**  
COMBICON plug connectors may only be actuated in the no-load condition. If smaller loads need to be switched for operational reasons, experimental values are available on request.

Description	No. of pos.	Dim. a [mm]	Type	Order No.	Pcs./Pkt.
<b>Inverted plugs with self-locking flange, 5.08 mm pitch, color: green,</b>	2	5.08	<b>FKIC 2,5/2-ST-5,08-RN</b>	<b>19 25 86 7</b>	50
	3	10.16	<b>FKIC 2,5/3-ST-5,08-RN</b>	<b>19 25 87 0</b>	
	4	15.24	<b>FKIC 2,5/4-ST-5,08-RN</b>	<b>19 25 88 3</b>	
	5	20.32	<b>FKIC 2,5/5-ST-5,08-RN</b>	<b>19 25 89 6</b>	
	6	25.40	<b>FKIC 2,5/6-ST-5,08-RN</b>	<b>19 25 90 6</b>	
	7	30.48	<b>FKIC 2,5/7-ST-5,08-RN</b>	<b>19 25 91 9</b>	
	8	35.56	<b>FKIC 2,5/8-ST-5,08-RN</b>	<b>19 25 92 2</b>	
	9	40.64	<b>FKIC 2,5/9-ST-5,08-RN</b>	<b>19 25 93 5</b>	
	10	45.72	<b>FKIC 2,5/10-ST-5,08-RN</b>	<b>19 25 94 8</b>	
	11	50.80	<b>FKIC 2,5/11-ST-5,08-RN</b>	<b>19 25 95 1</b>	
	12	55.88	<b>FKIC 2,5/12-ST-5,08-RN</b>	<b>19 25 96 4</b>	
	13	60.96	<b>FKIC 2,5/13-ST-5,08-RN</b>	<b>19 25 97 7</b>	
	14	66.04	<b>FKIC 2,5/14-ST-5,08-RN</b>	<b>19 25 98 0</b>	
	15	71.12	<b>FKIC 2,5/15-ST-5,08-RN</b>	<b>19 25 99 3</b>	
	16	76.20	<b>FKIC 2,5/16-ST-5,08-RN</b>	<b>19 26 00 2</b>	
(1) <b>Coding element</b> , is inserted into the recess on the inverted plug, insulating material: red			<b>CR-MSTB</b>	<b>17 34 40 1</b>	
(2) <b>Strain relief</b> , for snapping into the latching chambers of the plugs	4-pos. 8-pos.		<b>STZ 4-FKC-5,08</b> <b>STZ 8-FKC-5,08</b>	<b>18 76 87 7</b> <b>18 76 88 0</b>	10
(3) <b>Test plug</b> , consisting of metal part and colored insulating sleeve; Order data, see COMBICON catalog			<b>MPS-...</b> (see COMBICON catalog)		
(4) <b>Reducing plug</b> , for connecting a 4 mm Ø test plug to a 2.3 mm Ø test plug socket, insulation: gray			<b>RPS</b>	<b>02 01 64 7</b>	10
(5) <b>Screwdriver</b> , for releasing the spring blade: 0.6 x 3.5 x 100 mm, length: 180 mm			<b>SZS 0,6 x 3,5</b>	<b>12 05 05 3</b>	10
(6) <b>Marker card</b> , with 12 pcs. 10-section marker strips, white, self-adhesive, for 120 terminal blocks			<b>SK 5,08/3,8</b> (see COMBICON catalog)		
<b>Technical data</b>			see description		
Dimensions			5.08		
Pitch [mm]			5.08		
<b>Technical data in accordance with IEC/ DIN VDE</b>					
Insulating material group			I		
Surge voltage category / contamination class			III / 3 III / 2 II / 2		
Rated voltage [V]			250 320 630		
Rated surge voltage [kV]			4 4 4		
Nominal current / cross section [A]/[mm²]			12 / 2.5		
Maximum load current / cross section [A]/[mm²]			12 / 2.5		
<b>Connection capacity</b>			0.2 - 2.5 / 0.2 - 2.5 / 24 - 12		
Solid / stranded / conductor sizes [mm²]/[mm²]/AWG			0.25 - 2.5 / 0.25 - 2.5		
Stranded with ferrule without / with plastic sleeve [mm²]					
<b>Multiple connection (2 conductors with same cross section)</b>					
Stranded with TWIN ferrule with plastic sleeve [mm²]			0.5 - 1		
<b>Stripping length</b> [mm]			10		
<b>Internal cylindrical gauge (IEC 60 947-1)</b>			A 2		
<b>Insulating material</b>			PA		
Inflammability class in acc. with UL 94			V0		




# MSTBA 2,5/...-G-5,08-RN

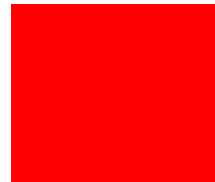
## 5.08 mm Pitch



**Note:**

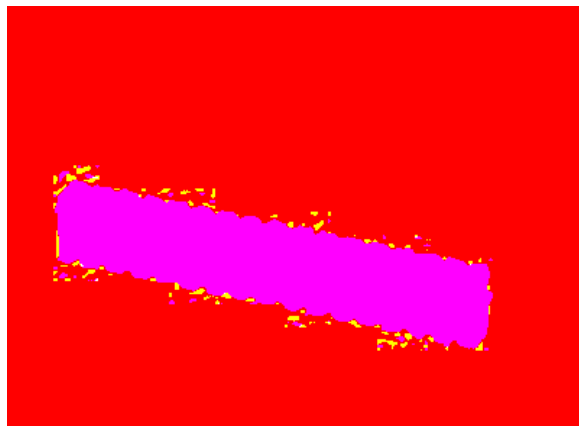
COMBICON plug connectors may only be actuated in the no-load condition. If smaller loads need to be switched for operational reasons, experimental values are available on request.

Description	No. of pos.	Dim. a [mm]	Type	Order No.	Pcs./Pkt.
<b>Headers with engagement latch, 5.08 mm pitch,</b> plug-in direction in parallel to the PCB, color: green,	2	5.08	<b>MSTBA 2,5/2-G-5,08-RN</b>	<b>19 26 01 5</b>	50
	3	10.16	<b>MSTBA 2,5/3-G-5,08-RN</b>	<b>19 26 02 8</b>	
	4	15.24	<b>MSTBA 2,5/4-G-5,08-RN</b>	<b>19 26 03 1</b>	
	5	20.32	<b>MSTBA 2,5/5-G-5,08-RN</b>	<b>19 26 04 4</b>	
	6	25.40	<b>MSTBA 2,5/6-G-5,08-RN</b>	<b>19 26 05 7</b>	
	7	30.48	<b>MSTBA 2,5/7-G-5,08-RN</b>	<b>19 26 06 0</b>	
	8	35.56	<b>MSTBA 2,5/8-G-5,08-RN</b>	<b>19 26 07 3</b>	
	9	40.64	<b>MSTBA 2,5/9-G-5,08-RN</b>	<b>19 26 08 6</b>	
	10	45.72	<b>MSTBA 2,5/10-G-5,08-RN</b>	<b>19 26 09 9</b>	
	11	50.80	<b>MSTBA 2,5/11-G-5,08-RN</b>	<b>19 26 10 9</b>	
	12	55.88	<b>MSTBA 2,5/12-G-5,08-RN</b>	<b>19 26 11 2</b>	
	13	60.96	<b>MSTBA 2,5/13-G-5,08-RN</b>	<b>19 26 12 5</b>	
	14	66.04	<b>MSTBA 2,5/14-G-5,08-RN</b>	<b>19 26 13 8</b>	
	15	71.12	<b>MSTBA 2,5/15-G-5,08-RN</b>	<b>19 26 14 1</b>	
	16	76.20	<b>MSTBA 2,5/16-G-5,08-RN</b>	<b>19 26 15 4</b>	
	17	81.26	<b>MSTBA 2,5/17-G-5,08-RN</b>	<b>19 26 16 7</b>	
	18	86.36	<b>MSTBA 2,5/18-G-5,08-RN</b>	<b>19 26 17 0</b>	
	(1) <b>Coding element</b> , is inserted into the recess on the header, insulating material: red			<b>CR-MSTB</b>	
(2) <b>Marker card</b> , with 12 pcs. 10-section marker strips, white, self-adhesive, for 120 terminal blocks			<b>SK 5,08/3,8</b> (see COMBICON catalog)		
<b>Technical data</b>			see description		
Dimensions					
Pitch		[mm]		5.08	
Hole diameter		[mm]		1.4	
Pin dimensions		[mm]x[mm]		1x1	
<b>Technical data in accordance with IEC/ DIN VDE</b>					
Insulating material group		–		IIIa	
Surge voltage category / contamination class		–/–	III / 3	III / 2	II / 2
Rated voltage		[V]	250	320	400
Rated surge voltage		[kV]	4	4	4
Nominal current / cross section		[A]/[mm²]		12 / –	
Maximum load current / cross section		[A]/[mm²]		12 / –	
<b>Insulating material</b>				PBT	
Inflammability class in acc. with UL 94				V0	



# MSTBVA 2,5/...-G-5,08-RN

## 5.08 mm Pitch



**Note:**

COMBICON plug connectors may only be actuated in the no-load condition. If smaller loads need to be switched for operational reasons, experimental values are available on request.

Description	No. of pos.	Dim. a [mm]	Type	Order No.	Pcs./Pkt.
<b>Headers with engagement latch, 5.08 mm pitch,</b> plug-in direction vertical to the PCB, color: green,	2	5.08	<b>MSTBVA 2,5/2-G-5,08-RN</b>	<b>19 36 01 8</b>	50
	3	10.16	<b>MSTBVA 2,5/3-G-5,08-RN</b>	<b>19 36 02 1</b>	
	4	15.24	<b>MSTBVA 2,5/4-G-5,08-RN</b>	<b>19 36 03 4</b>	
	5	20.32	<b>MSTBVA 2,5/5-G-5,08-RN</b>	<b>19 36 04 7</b>	
	6	25.40	<b>MSTBVA 2,5/6-G-5,08-RN</b>	<b>19 36 05 0</b>	
	7	30.48	<b>MSTBVA 2,5/7-G-5,08-RN</b>	<b>19 36 06 3</b>	
	8	35.56	<b>MSTBVA 2,5/8-G-5,08-RN</b>	<b>19 36 07 6</b>	
	9	40.64	<b>MSTBVA 2,5/9-G-5,08-RN</b>	<b>19 36 08 9</b>	
	10	45.72	<b>MSTBVA 2,5/10-G-5,08-RN</b>	<b>19 36 09 2</b>	
	11	50.80	<b>MSTBVA 2,5/11-G-5,08-RN</b>	<b>19 36 10 2</b>	
	12	55.88	<b>MSTBVA 2,5/12-G-5,08-RN</b>	<b>19 36 11 5</b>	
	13	60.96	<b>MSTBVA 2,5/13-G-5,08-RN</b>	<b>19 36 12 8</b>	
	14	66.04	<b>MSTBVA 2,5/14-G-5,08-RN</b>	<b>19 36 13 1</b>	
	15	71.12	<b>MSTBVA 2,5/15-G-5,08-RN</b>	<b>19 36 14 4</b>	
	16	76.20	<b>MSTBVA 2,5/16-G-5,08-RN</b>	<b>19 36 15 7</b>	
	17	81.26	<b>MSTBVA 2,5/17-G-5,08-RN</b>	<b>19 36 16 0</b>	
	18	86.36	<b>MSTBVA 2,5/18-G-5,08-RN</b>	<b>19 36 17 3</b>	

(1) **Coding element**, is inserted into the recess on the header, insulating material: red



<b>CR-MSTB</b>	<b>17 34 40 1</b>	100
----------------	-------------------	-----

(2) **Marker card**, with 12 pcs. 10-section marker strips, white, self-adhesive, for 120 terminal blocks

<b>SK 5,08/3,8</b> (see COMBICON catalog)		
--	--	--

**Technical data**

Dimensions		
Pitch	[mm]	5.08
Hole diameter	[mm]	1.4
Pin dimensions	[mm]x[mm]	1x1

see description

**Technical data in accordance with IEC/ DIN VDE**

Insulating material group	-	III / 3	IIIa	III / 2
Surge voltage category / contamination class	-/-	250	320	400
Rated voltage	[V]	4	4	4
Rated surge voltage	[kV]			
Nominal current / cross section	[A]/[mm <sup>2</sup> ]		12 / -	
Maximum load current / cross section	[A]/[mm <sup>2</sup> ]		12 / -	

**Insulating material**  
Inflammability class in acc. with UL 94

PBT  
V0

