



Chipsmall Limited consists of a professional team with an average of over 10 year of expertise in the distribution of electronic components. Based in Hongkong, we have already established firm and mutual-benefit business relationships with customers from,Europe,America and south Asia,supplying obsolete and hard-to-find components to meet their specific needs.

With the principle of "Quality Parts,Customers Priority,Honest Operation,and Considerate Service",our business mainly focus on the distribution of electronic components. Line cards we deal with include Microchip,ALPS,ROHM,Xilinx,Pulse,ON,Everlight and Freescale. Main products comprise IC,Modules,Potentiometer,IC Socket,Relay,Connector.Our parts cover such applications as commercial,industrial, and automotives areas.

We are looking forward to setting up business relationship with you and hope to provide you with the best service and solution. Let us make a better world for our industry!



Contact us

Tel: +86-755-8981 8866 Fax: +86-755-8427 6832

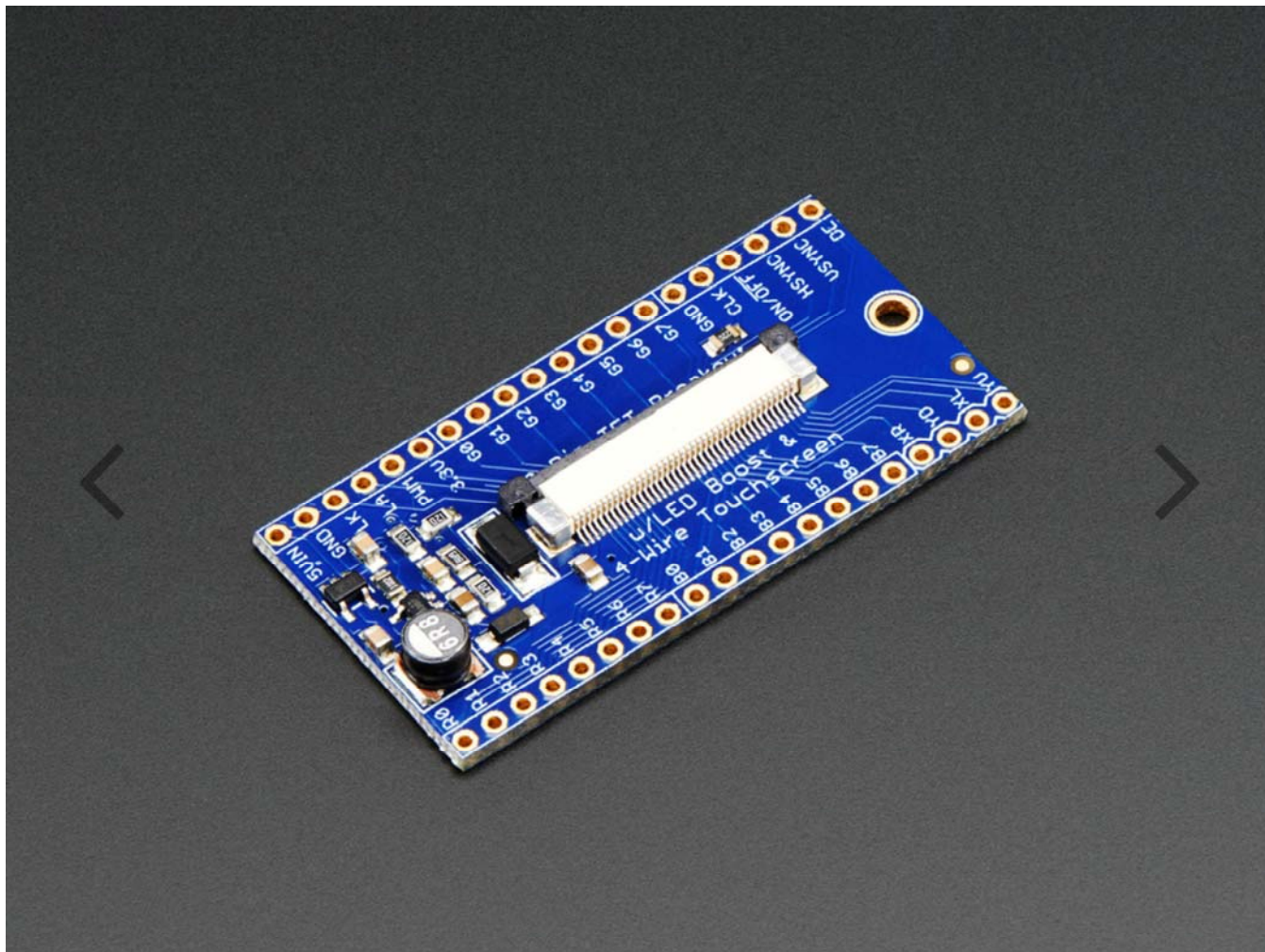
Email & Skype: info@chipsmall.com Web: www.chipsmall.com

Address: A1208, Overseas Decoration Building, #122 Zhenhua RD., Futian, Shenzhen, China



40-pin TFT Friend – FPC Breakout with LED Backlight Driver

PRODUCT ID: 1932



DESCRIPTION

This breakout board is something we designed in-house to help us work with 'dot-clock' 40-pin TFT displays that require the RGB pixel data to be clocked in continuously. These displays have 40-pin Flex PCB (FPC) cables and often require a boost converter for the backlight LED, which makes them annoying to breadboard. To make them breadboardable, we stuck a 40-pin FPC and a FAN5333-based backlight driver with adjustable current onto a labeled breakout board. Now you can poke and probe each pin!

The backlight driver defaults to 25mA and can boost up to 24VDC for up to 7-LED strings. Check your display datasheet for the string configuration, and short out the jumpers to increase the backlight current.

Comes with one assembled and tested PCB. Header and TFT display is not included! We have 4.3" with touchscreen and 5.0" (with and without touchscreen) displays in the shop that work well with this. The 4.3" tend to like 25mA backlight drive, the 5.0" look good with 50mA backlight.

We don't have a tutorial on using this breakout or how to interface with these displays and you must have a processor that can drive the display! This is a tool designed for more advanced makers who already have a microprocessor that has dot-clock-type TFT support built in and just want a wiring assistant.

Technical Details

Dimensions: 25mm x 51mm x 4mm / 1" x 2" x 0.2"

Weight: 6g