



Chipsmall Limited consists of a professional team with an average of over 10 year of expertise in the distribution of electronic components. Based in Hongkong, we have already established firm and mutual-benefit business relationships with customers from,Europe,America and south Asia,supplying obsolete and hard-to-find components to meet their specific needs.

With the principle of “Quality Parts,Customers Priority,Honest Operation,and Considerate Service”,our business mainly focus on the distribution of electronic components. Line cards we deal with include Microchip,ALPS,ROHM,Xilinx,Pulse,ON,Everlight and Freescale. Main products comprise IC,Modules,Potentiometer,IC Socket,Relay,Connector.Our parts cover such applications as commercial,industrial, and automotives areas.

We are looking forward to setting up business relationship with you and hope to provide you with the best service and solution. Let us make a better world for our industry!



Contact us

Tel: +86-755-8981 8866 Fax: +86-755-8427 6832

Email & Skype: info@chipsmall.com Web: www.chipsmall.com

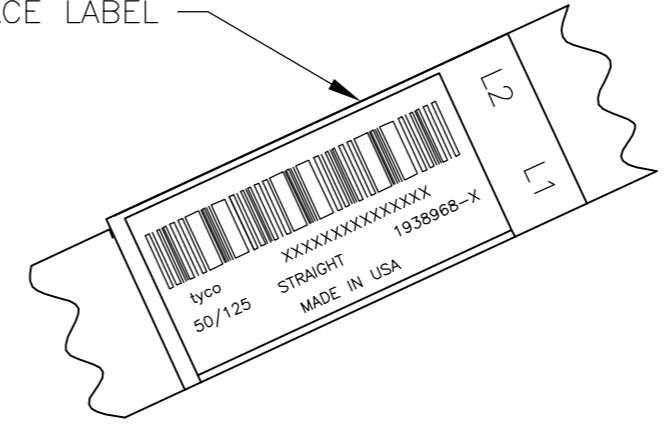
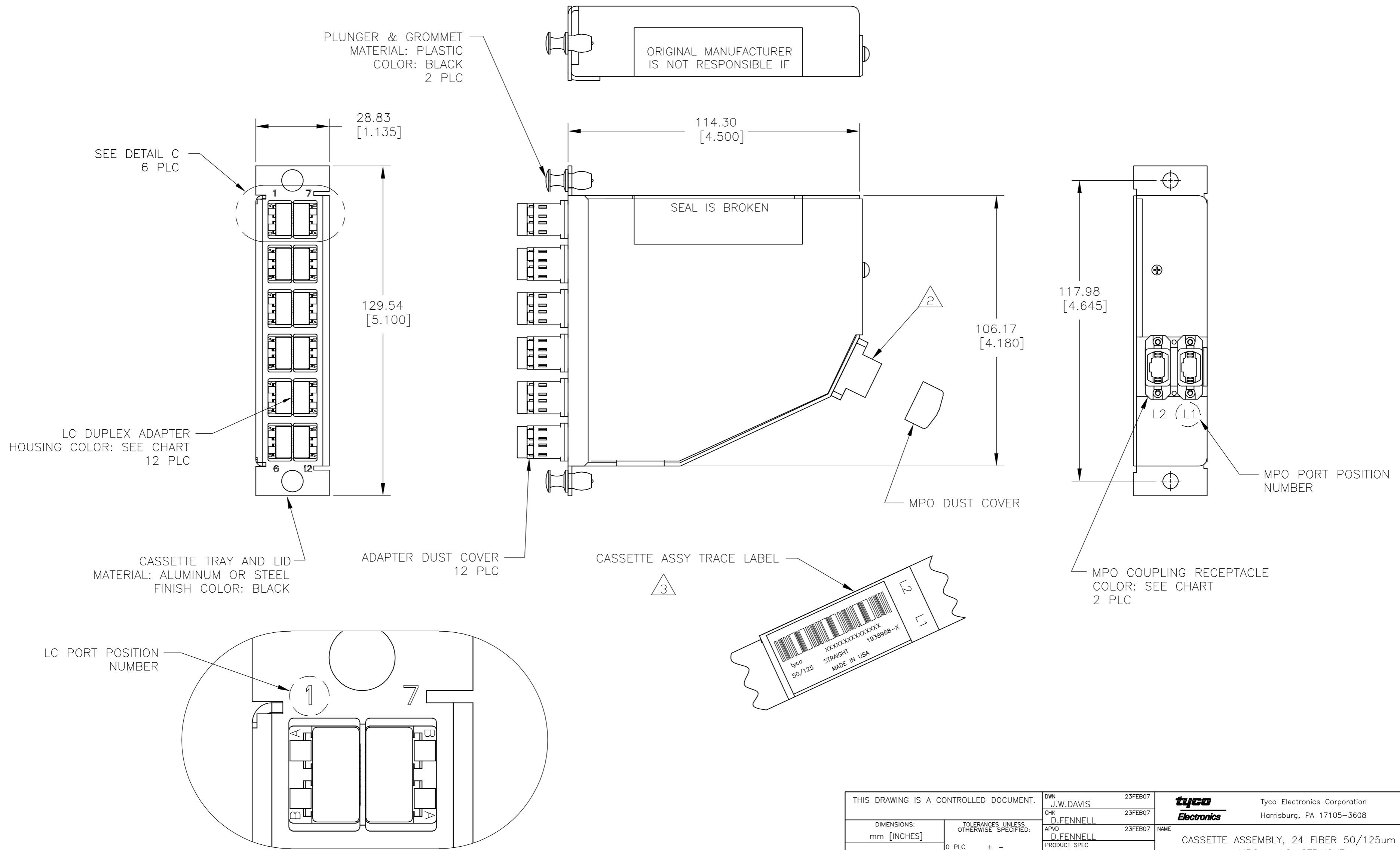
Address: A1208, Overseas Decoration Building, #122 Zhenhua RD., Futian, Shenzhen, China



LOC	DIST	REVISIONS					
CE	16	P	LTR	DESCRIPTION	DATE	DWN	APVD
		A		RELEASED	23FEB07	JWD	DLF

D
C
B
A

D
C
B
A



THIS DRAWING IS A CONTROLLED DOCUMENT.		DWN J.W.DAVIS 23FEB07	Tyco Electronics Corporation Harrisburg, PA 17105-3608	
DIMENSIONS: mm [INCHES]		CHK D.FENNELL 23FEB07	NAME D.FENNELL	
TOLERANCES UNLESS OTHERWISE SPECIFIED:		APVD D.FENNELL 23FEB07	PRODUCT SPEC	
0 PLC ± -		APPLICATION SPEC		
1 PLC ± -		WEIGHT		
2 PLC ± -		SIZE A2		
3 PLC ± -		CAGE CODE 00779		
4 PLC ± -		DRAWING NO C=1938968		
ANGLES ± -		RESTRICTED TO		
FINISH		SCALE NTS		
MATERIAL		SHEET 1 of 2		
		REV A		

1938968

THIS DRAWING IS UNPUBLISHED. RELEASED FOR PUBLICATION
 © COPYRIGHT BY TYCO ELECTRONICS CORPORATION. ALL RIGHTS RESERVED.

LOC		DIST		REVISIONS			
P	LTR	DESCRIPTION		DATE	DWN	APVD	
CE	16						
		SEE SHEET 1					

1. MAXIMUM CASSETTE ASSEMBLY LOSS: 1.25dB.
2. WHITE MARKING ON MPO TO BE FACING TOWARD TOP OF CONNECTOR MODULE. WHITE MARK INDICATES FIBER 1 SIDE
3. SEE TRACE LABEL DETAIL
4. A COPY OF CASSETTE ASSEMBLY LOSS TEST DATA WILL BE PLACED INSIDE OR WITH THE UNIT PACKAGE. CASSETTES WILL BE TESTED AT 1300nm WAVELENGTH.
5. PRODUCT AND PROCESSING MUST MEET REQUIREMENTS OF TYCO ELECTRONICS STANDARD 230-702



FIBER PATH – STRAIGHT

MPO L1 PORT POSITION NO	MPO L2 PORT POSITION NO	LC PORT POSITION NO
1	—	1B
2	—	1A
3	—	2B
4	—	2A
5	—	3B
6	—	3A
7	—	4B
8	—	4A
9	—	5B
10	—	5A
11	—	6B
12	—	6A
—	1	7B
—	2	7A
—	3	8B
—	4	8A
—	5	9B
—	6	9A
—	7	10B
—	8	10A
—	9	11B
—	10	11A
—	11	12B
—	12	12A

AQUA SECURE	AQUA SECURE	1-1938968-1
SLATE SECURE	SLATE SECURE	1-1938968-0
ROSE SECURE	ROSE SECURE	1938968-9
VIOLET SECURE	VIOLET SECURE	1938968-8
BROWN SECURE	BROWN SECURE	1938968-7
ORANGE SECURE	ORANGE SECURE	1938968-6
YELLOW SECURE	YELLOW SECURE	1938968-5
BLUE SECURE	BLUE SECURE	1938968-4
GREEN SECURE	GREEN SECURE	1938968-3
RED SECURE	RED SECURE	1938968-2
BLACK STANDARD	BEIGE STANDARD	1938968-1
MPO COUPLING BUSHING COLOR & TYPE	LC ADAPTER COLOR & TYPE	PART NUMBER

THIS DRAWING IS A CONTROLLED DOCUMENT.

DWN J.W.DAVIS 23FEB07
 CHK D.FENNEL 23FEB07
 APVD D.FENNEL 23FEB07

TOLERANCES UNLESS OTHERWISE SPECIFIED:
 0 PLC ± -
 1 PLC ± -
 2 PLC ± -
 3 PLC ± -
 4 PLC ± -
 ANGLES ± -

FINISH

WEIGHT

CUSTOMER DRAWING

tyco Electronics Tyco Electronics Corporation Harrisburg, PA 17105-3608

NAME CASSETTE ASSEMBLY, 24 FIBER 50/125um MPO - LC, STRAIGHT

SIZE A2 CAGE CODE 00779 DRAWING NO. C=1938968 RESTRICTED TO

SCALE NTS SHEET 2 of 2 REV A