



Chipsmall Limited consists of a professional team with an average of over 10 year of expertise in the distribution of electronic components. Based in Hongkong, we have already established firm and mutual-benefit business relationships with customers from,Europe,America and south Asia,supplying obsolete and hard-to-find components to meet their specific needs.

With the principle of “Quality Parts,Customers Priority,Honest Operation,and Considerate Service”,our business mainly focus on the distribution of electronic components. Line cards we deal with include Microchip,ALPS,ROHM,Xilinx,Pulse,ON,Everlight and Freescale. Main products comprise IC,Modules,Potentiometer,IC Socket,Relay,Connector.Our parts cover such applications as commercial,industrial, and automotives areas.

We are looking forward to setting up business relationship with you and hope to provide you with the best service and solution. Let us make a better world for our industry!



Contact us

Tel: +86-755-8981 8866 Fax: +86-755-8427 6832

Email & Skype: info@chipsmall.com Web: www.chipsmall.com

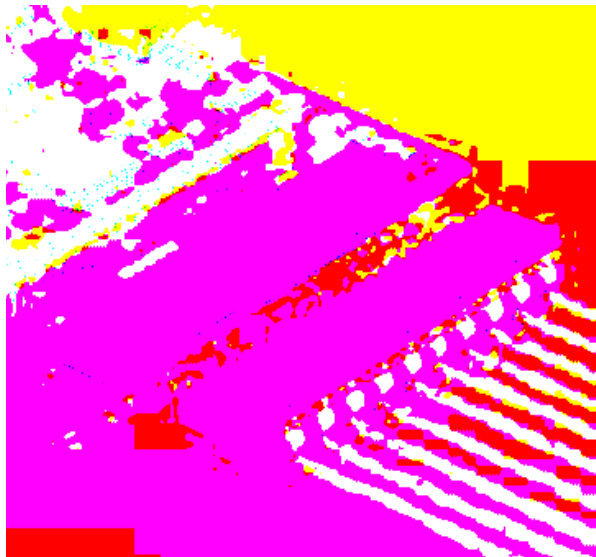
Address: A1208, Overseas Decoration Building, #122 Zhenhua RD., Futian, Shenzhen, China



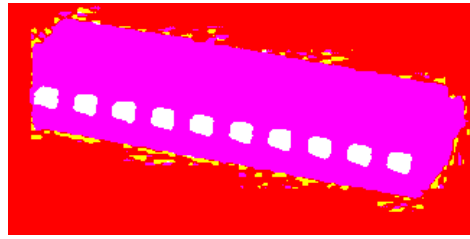


COMBICON Spring Cage Plugs 7.5 or 7.62 mm Pitch

The new GFKC 2,5 plug is a spring cage version for large pitches and a nominal voltage of up to 400 V. The fast conductor connection is based on the "plug and play principle", i.e. solid or stranded conductors with a ferrule can be inserted directly into the terminal point, where they make contact automatically, without having to operate the opening lever. In addition, all plugs have two test connections which can accommodate 2 mm Ø test pins or 2.3 mm Ø test plugs. GFKC 2,5 plugs and headers are available with 2-12 positions. The plugs are also available with a screw flange for a vibration-resistant connection to headers with a threaded flange. The self-adhesive marker cards SK 7,5/3,8 or SK 7,62/3,8 are used for labeling.



Spring Cage Plugs 7.5 mm Pitch GFKC 2,5/...-ST-7,5



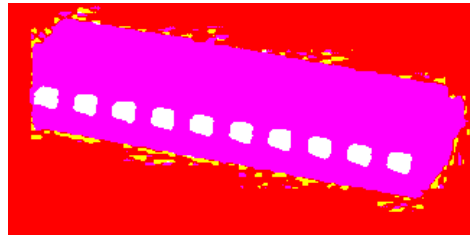
Note:

COMBICON plug connectors may only be actuated in the no-load condition. If smaller loads need to be switched for operational reasons, experimental values are available on request.

Description	No. of pos.	Dim. a [mm]	Type	Order No.	Pcs./Pkt.
Plugs, 7.5 mm pitch, color: green,	2	7.5	GFKC 2,5/2-ST-7,5	19 39 41 3	50
	3	15	GFKC 2,5/3-ST-7,5	19 39 42 6	
	4	22.5	GFKC 2,5/4-ST-7,5	19 39 43 9	
	5	30	GFKC 2,5/5-ST-7,5	19 39 44 2	
	6	37.5	GFKC 2,5/6-ST-7,5	19 39 45 5	
	7	45	GFKC 2,5/7-ST-7,5	19 39 46 8	
	8	52.5	GFKC 2,5/8-ST-7,5	19 39 47 1	
	9	60	GFKC 2,5/9-ST-7,5	19 39 48 4	
	10	67.5	GFKC 2,5/10-ST-7,5	19 39 49 7	
	11	75	GFKC 2,5/11-ST-7,5	19 39 50 7	
	12	82.5	GFKC 2,5/12-ST-7,5	19 39 51 0	
	(1) Coding profile , is inserted into the groove on the plug, insulating material: red			CP-MSTB	
(2) Marker card , with 12 pcs. 10-section marker strips, white, self-adhesive, for 120 terminal blocks			SK 7,5/3,8 (see COMBICON catalog)		
(3) Screwdriver , blade: 0.6 x 3.5 x 100 mm length: 180 mm			SZS 0,6 x 3,5	12 05 05 3	10
Technical data			see description		
Dimensions			7.5		
Pitch [mm]			-		
Hole diameter [mm]			-		
Pin dimensions [mm]x[mm]			-		
Technical data in acc. with IEC/ DIN VDE			I		
Insulating material group			III / 3 III / 2 II / 2		
Surge voltage category / contamination class			400 630 1000		
Rated voltage [V]			6 6 6		
Rated surge voltage [kV]			12 / 2.5		
Nominal current / cross section [A]/[mm ²]			12 / 2.5		
Maximum load current / cross section [A]/[mm ²]			12 / 2.5		
Capacity connection			0.2 - 2.5 / 0.2 - 2.5 / 24 - 12		
Solid / stranded / conductor sizes [mm ²]/[mm ²]/AWG			0.25 - 2.5 / 0.25 - 2.5		
Stranded with ferrule without / with plastic sleeve [mm ²]					
Multiple connection (2 conductors with same cross section)			—		
Solid / stranded [mm ²]			—		
Stranded with ferrule without plastic sleeve [mm ²]			—		
Stranded with TWIN ferrule with plastic sleeve [mm ²]			0.5 - 1		
Stripping length [mm]			10		
Internal cylindrical gauge (IEC 60 947-1)			A2		
Thread			—		
Torque [Nm]			—		
Insulating material			PA		
Inflammability class in acc. with UL 94			V0		



Spring Cage Plugs 7.62 mm Pitch GFKC 2,5/...-ST-7,62



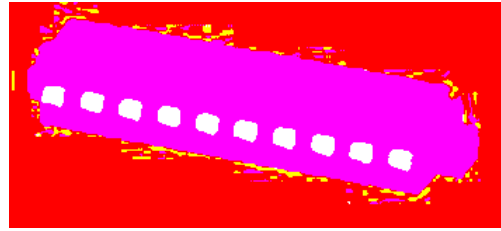
Note:

COMBICON plug connectors may only be actuated in the no-load condition. If smaller loads need to be switched for operational reasons, experimental values are available on request.

Description	No. of pos.	Dim. a [mm]	Type	Order No.	Pcs./Pkt.
Plugs, 7.62 mm pitch, color: green,	2	7.62	GFKC 2,5/2-ST-7,62	19 39 63 3	50
	3	15.24	GFKC 2,5/3-ST-7,62	19 39 64 6	
	4	22.86	GFKC 2,5/4-ST-7,62	19 39 65 9	
	5	30.48	GFKC 2,5/5-ST-7,62	19 39 66 2	
	6	38.10	GFKC 2,5/6-ST-7,62	19 39 67 5	
	7	45.72	GFKC 2,5/7-ST-7,62	19 39 68 8	
	8	53.34	GFKC 2,5/8-ST-7,62	19 39 69 1	
	9	60.96	GFKC 2,5/9-ST-7,62	19 39 70 1	
	10	68.58	GFKC 2,5/10-ST-7,62	19 39 71 4	
	11	76.20	GFKC 2,5/11-ST-7,62	19 39 72 7	
	12	83.82	GFKC 2,5/12-ST-7,62	19 39 73 0	
	(1) Coding profile , is inserted into the groove on the plug, insulating material: red			CP-MSTB	
(2) Marker card , with 12 pcs. 10-section marker strips, white, self-adhesive, for 120 terminal blocks			SK 7,62/3,8 (see COMBICON catalog)		
(3) Screwdriver , blade: 0.6 x 3.5 x 100 mm length: 180 mm			SZS 0,6 x 3,5	12 05 05 3	10
Technical data			see description		
Dimensions			7.62		
Pitch		[mm]	-		
Hole diameter		[mm]	-		
Pin dimensions		[mm]x[mm]	-		
Technical data in acc. with IEC/ DIN VDE					
Insulating material group		-	I		
Surge voltage category / contamination class		-/-	III / 3	III / 2	II / 2
Rated voltage		[V]	400	630	1000
Rated surge voltage		[kV]	6	6	6
Nominal current / cross section		[A]/[mm²]	12 / 2.5		
Maximum load current / cross section		[A]/[mm²]	12 / 2.5		
Capacity connection					
Solid / stranded / conductor sizes		[mm²]/[mm²]/AWG	0.2 - 2.5 / 0.2 - 2.5 / 24 - 12		
Stranded with ferrule without / with plastic sleeve		[mm²]	0.25 - 2.5 / 0.25 - 2.5		
Multiple connection (2 conductors with same cross section)					
Solid / stranded		[mm²]	-		
Stranded with ferrule without plastic sleeve		[mm²]	-		
Stranded with TWIN ferrule with plastic sleeve		[mm²]	0.5 - 1		
Stripping length		[mm]	10		
Internal cylindrical gauge (IEC 60 947-1)		-	A2		
Thread		-	-		
Torque		[Nm]	-		
Insulating material			PA		
Inflammability class in acc. with UL 94			V0		



Spring Cage Plugs with Screw Flange 7.5 mm Pitch GFKC 2,5/...-STF-7,5



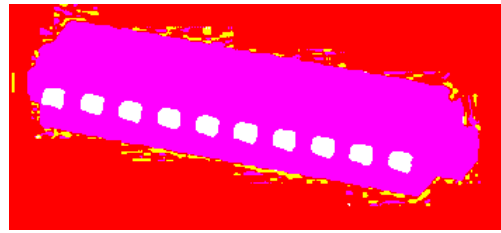
Note:

COMBICON plug connectors may only be actuated in the no-load condition. If smaller loads need to be switched for operational reasons, experimental values are available on request.

Description	No. of pos.	Dim. a [mm]	Type	Order No.	Pcs./Pkt.
Plugs with screw flange, 7.5 mm pitch, color: green,	2	7.5	GFKC 2,5/2-STF-7,5	19 39 52 3	50
	3	15	GFKC 2,5/3-STF-7,5	19 39 53 6	
	4	22.5	GFKC 2,5/4-STF-7,5	19 39 54 9	
	5	30	GFKC 2,5/5-STF-7,5	19 39 55 2	
	6	37.5	GFKC 2,5/6-STF-7,5	19 39 56 5	
	7	45	GFKC 2,5/7-STF-7,5	19 39 57 8	
	8	52.5	GFKC 2,5/8-STF-7,5	19 39 58 1	
	9	60	GFKC 2,5/9-STF-7,5	19 39 59 4	
	10	67.5	GFKC 2,5/10-STF-7,5	19 39 60 4	
	11	75	GFKC 2,5/11-STF-7,5	19 39 61 7	
	12	82.5	GFKC 2,5/12-STF-7,5	19 39 62 0	
	(1) Coding profile , is inserted into the groove on the plug, insulating material: red			CP-MSTB	
(2) Marker card , with 12 pcs. 10-section marker strips, white, selv-adhesive, for 120 terminal blocks			SK 7,5/3,8 (see COMBICON catalog)		
(3) Screwdriver , blade: 0.6 x 3.5 x 100 mm length: 180 mm			SZS 0,6 x 3,5	12 05 05 3	10
Technical data			see description		
Dimensions			7.5		
Pitch	[mm]		-		
Hole diameter	[mm]		-		
Pin dimensions	[mm]x[mm]		-		
Technical data in acc. with IEC/ DIN VDE			I		
Insulating material group			-		
Surge voltage category / contamination class			III / 3	III / 2	II / 2
Rated voltage [V]			400	630	1000
Rated surge voltage [kV]			6	6	6
Nominal current / cross section [A]/[mm²]			12 / 2.5		
Maximum load current / cross section [A]/[mm²]			12 / 2.5		
Capacity connection			0.2 - 2.5 / 0.2 - 2.5 / 24 - 12		
Solid / stranded / conductor sizes [mm²]/[mm²]/AWG			0.25 - 2.5 / 0.25 - 2.5		
Stranded with ferrule without / with plastic sleeve [mm²]					
Multiple connection (2 conductors with same cross section)					
Solid / stranded [mm²]			-		
Stranded with ferrule without plastic sleeve [mm²]			-		
Stranded with TWIN ferrule with plastic sleeve [mm²]			0.5 - 1		
Stripping length [mm]			10		
Internal cylindrical gauge (IEC 60 947-1)			A2		
Thread			-		
Torque [Nm]			-		
Insulating material			PA		
Inflammability class in acc. with UL 94			V0		



Spring Cage Plugs with Screw Flange 7.62 mm Pitch GFKC 2,5/...-STF-7,62



Note:

COMBICON plug connectors may only be actuated in the no-load condition. If smaller loads need to be switched for operational reasons, experimental values are available on request.

Description	No. of pos.	Dim. a [mm]	Type	Order No.	Pcs./Pkt.
Plugs with screw flange, 7.62 mm pitch, color: green,	2	7.62	GFKC 2,5/2-STF-7,62	19 39 74 3	50
	3	15.24	GFKC 2,5/3-STF-7,62	19 39 75 6	
	4	22.86	GFKC 2,5/4-STF-7,62	19 39 76 9	
	5	30.48	GFKC 2,5/5-STF-7,62	19 39 77 2	
	6	38.10	GFKC 2,5/6-STF-7,62	19 39 78 5	
	7	45.72	GFKC 2,5/7-STF-7,62	19 39 79 8	
	8	53.34	GFKC 2,5/8-STF-7,62	19 39 80 8	
	9	60.96	GFKC 2,5/9-STF-7,62	19 39 81 1	
	10	68.58	GFKC 2,5/10-STF-7,62	19 39 82 4	
	11	76.20	GFKC 2,5/11-STF-7,62	19 39 83 7	
	12	83.82	GFKC 2,5/12-STF-7,62	19 39 84 0	
	(1) Coding profile , is inserted into the groove on the plug, insulating material: red			CP-MSTB	
(2) Marker card , with 12 pcs. 10-section marker strips, white, self-adhesive, for 120 terminal blocks			SK 7,62/3,8 (see COMBICON catalog)		
(3) Screwdriver , blade: 0.6 x 3.5 x 100 mm length: 180 mm			SZS 0,6 x 3,5	12 05 05 3	10
Technical data			see description		
Dimensions		[mm]	7.62		
Pitch		[mm]	-		
Hole diameter		[mm]	-		
Pin dimensions		[mm]x[mm]	-		
Technical data in acc. with IEC/ DIN VDE			I		
Insulating material group		-	III / 3	III / 2	II / 2
Surge voltage category / contamination class		-/-	400	630	1000
Rated voltage		[V]	6	6	6
Rated surge voltage		[kV]		12 / 2.5	
Nominal current / cross section		[A]/[mm²]		12 / 2.5	
Maximum load current / cross section		[A]/[mm²]		12 / 2.5	
Capacity connection			0.2 - 2.5 / 0.2 - 2.5 / 24 - 12		
Solid / stranded / conductor sizes		[mm²]/[mm²]/AWG	0.25 - 2.5 / 0.25 - 2.5		
Stranded with ferrule without / with plastic sleeve		[mm²]			
Multiple connection (2 conductors with same cross section)			-		
Solid / stranded		[mm²]	-		
Stranded with ferrule without plastic sleeve		[mm²]	-		
Stranded with TWIN ferrule with plastic sleeve		[mm²]	0.5 - 1		
Stripping length		[mm]	10		
Internal cylindrical gauge (IEC 60 947-1)		-	A2		
Thread		-	-		
Torque		[Nm]	-		
Insulating material			PA		
Inflammability class in acc. with UL 94			V0		

© Phoenix Contact 15.03.02 TNR: 5126617-00 http://www.phoenixcontact.com

