



Chipsmall Limited consists of a professional team with an average of over 10 year of expertise in the distribution of electronic components. Based in Hongkong, we have already established firm and mutual-benefit business relationships with customers from,Europe,America and south Asia,supplying obsolete and hard-to-find components to meet their specific needs.

With the principle of “Quality Parts,Customers Priority,Honest Operation,and Considerate Service”,our business mainly focus on the distribution of electronic components. Line cards we deal with include Microchip,ALPS,ROHM,Xilinx,Pulse,ON,Everlight and Freescale. Main products comprise IC,Modules,Potentiometer,IC Socket,Relay,Connector.Our parts cover such applications as commercial,industrial, and automotives areas.

We are looking forward to setting up business relationship with you and hope to provide you with the best service and solution. Let us make a better world for our industry!



## Contact us

Tel: +86-755-8981 8866 Fax: +86-755-8427 6832

Email & Skype: [info@chipsmall.com](mailto:info@chipsmall.com) Web: [www.chipsmall.com](http://www.chipsmall.com)

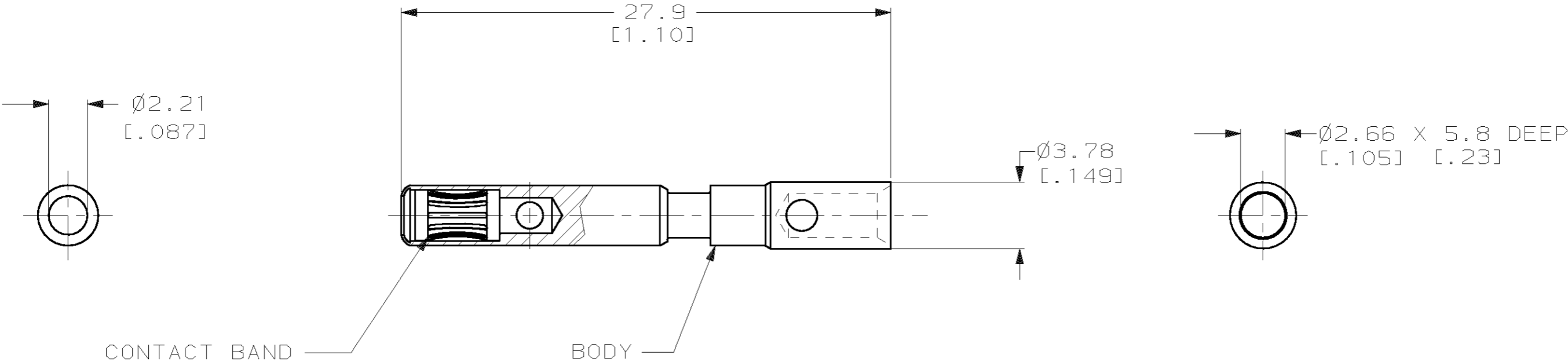
Address: A1208, Overseas Decoration Building, #122 Zhenhua RD., Futian, Shenzhen, China




THIS DRAWING IS UNPUBLISHED. RELEASED FOR PUBLICATION ,19 .  
© COPYRIGHT 19 BY AMP INCORPORATED. ALL INTERNATIONAL RIGHTS RESERVED.

LOC	DIST			REVISIONS				
				ZONE	LTR	DESCRIPTION	DATE	APPD
CH	11	P	F		O	RELEASED FOR PRODUCTION	07/JAN/97	RNP
					A	EC OB20-1083-98	20/AUG/98	RNP
					B	EC OB20-0530-99	29/APR/99	RNP

- 1 MATERIAL- BODY, COPPER ALLOY  
BAND, BeCu
- 2 FINISH-BODY AND BAND, .0002 IN. SILVER  
OVER .00004 IN. NICKEL.
3. WIRE BARREL WILL ACCEPT 12-14 AWG WIRE.
4. MATES WITH AMP PART NUMBER 194212-1.
5. ALL DIMENSIONS ARE REFERENCE ONLY.



2	5	194213-1	
FINISH		PART NO	
 AMP Incorporated Harrisburg, PA 17105-3608			
ASSY, 2mm, 12-14 AWG ATED, MATE-N-LOK II			
CODE		DRAWING NO	
779		C-194213	
SHEET		1 OF 1	

DO NOT SCALE PRINT. UNLESS SPECIFIED DIMENSIONS IN mm [INCHES] TOLERANCES ON: 2 PLC DEC ± 0.5[.02] 3 PLC DEC ± 0.25[.010] ANGLES ± -	DR 07/JAN/97 R N POLK
	CHK -
	APPD -
	APPD -
MATERIAL 1	PRODUCT SPEC -
FINISH 2	APPLICATION SPEC -
WEIGHT -	

THIS DRAWING IS A CONTROLLED DOCUMENT FOR  
AMP INCORPORATED. IT IS SUBJECT TO CHANGE  
AND THE CONTROLLING ENGINEERING ORGANIZATION  
SHOULD BE CONTACTED FOR THE LATEST REVISION.