



Chipsmall Limited consists of a professional team with an average of over 10 year of expertise in the distribution of electronic components. Based in Hongkong, we have already established firm and mutual-benefit business relationships with customers from,Europe,America and south Asia,supplying obsolete and hard-to-find components to meet their specific needs.

With the principle of “Quality Parts,Customers Priority,Honest Operation,and Considerate Service”,our business mainly focus on the distribution of electronic components. Line cards we deal with include Microchip,ALPS,ROHM,Xilinx,Pulse,ON,Everlight and Freescale. Main products comprise IC,Modules,Potentiometer,IC Socket,Relay,Connector.Our parts cover such applications as commercial,industrial, and automotives areas.

We are looking forward to setting up business relationship with you and hope to provide you with the best service and solution. Let us make a better world for our industry!



Contact us

Tel: +86-755-8981 8866 Fax: +86-755-8427 6832

Email & Skype: info@chipsmall.com Web: www.chipsmall.com

Address: A1208, Overseas Decoration Building, #122 Zhenhua RD., Futian, Shenzhen, China



System pitch 5.08 mm (0.200 inch) BLZP 5.08/16/180 SN OR BX

Weidmüller Interface GmbH & Co. KG
 Klingenbergstraße 16
 D-32758 Detmold
 Germany
 Fon: +49 5231 14-0
 Fax: +49 5231 14-2083
 www.weidmueller.com



Female connectors with clamping yoke screw connection for conductor connection with straight (180°) outlet direction. The female connectors provide space for labelling and can be coded. Can be fastened with flange or release latch. They feature an integrated plus/minus screw, protection against false insertion under clamping yoke. They are delivered with an opened clamping yoke.

- 0.2-2.5 mm² (IEC) / 26-12 AWG (UL)
- 400 V (IEC) / 300 V (UL)
- 19 A (IEC) / 15 A (UL)

General ordering data

Order No.	1943720000
Part designation	BLZP 5.08/16/180 SN OR BX
Version	PCB plug-in connector, female plug, 5.08 mm, No. of poles: 16, 180°, Clamping yoke connection, Clamping range, max.: 4 mm ² , Box
GTIN (EAN)	4032248617739
Qty.	27 pc(s).
Packaging	Box

System pitch 5.08 mm (0.200 inch) BLZP 5.08/16/180 SN OR BX

Weidmüller Interface GmbH & Co. KG
Klingenbergstraße 16
D-32758 Detmold
Germany
Fon: +49 5231 14-0
Fax: +49 5231 14-2083
www.weidmueller.com

Technical data

System parameters

Conductor connection system	Clamping yoke connection	Outgoing direction of conductor	180°
Pitch in mm	5.08 mm	Pitch in inch	0.2 inch
No. of poles	16	No. of rows	1
Screwdriver blade	0.6 x 3.5	Screwdriver blade standard	DIN 5264
Tightening torque, min.	0.4 Nm	Tightening torque, max.	0.5 Nm
Clamping screw	M 2.5	Stripping length	7 mm
L1 in mm	76.2 mm	L1 in inch	3 inch
Electric shock protection to DIN VDE 57 106 Safe from finger touch			

Material data

Insulating material	PBT	Colour	Orange
colour chart	Similar to RAL 2000	Flammability class UL 94	V-0
CTI	≥ 200	Contact material	Copper alloy
Contact surface	tinned	Contact base material	Copper alloy
Highest continuous operating temperature, min.	-25 °C	Highest continuous operating temperature, max.	100 °C

Connectable conductors

Clamping range, min.	0.13 mm ²	Clamping range, max.	4 mm ²
Conductor connection cross-section AWG, min.	AWG 26	Conductor connection cross-section AWG, max.	AWG 12
Solid, min. H05(07) V-U	0.2 mm ²	Solid, max. H05(07) V-U	4 mm ²
Flexible, min. H05(07) V-K	0.2 mm ²	Flexible, max. H05(07) V-K	4 mm ²
w. wire end ferrule, DIN 46228 pt 1, min.	0.2 mm ²	with wire end ferrule, DIN 46228 pt 1, max.	4 mm ²
w. plastic collar ferrule, DIN 46228 pt 4, min.	0.2 mm ²	with plastic collar ferrule, DIN 46228 pt 4, max.	2.5 mm ²
Gauge to EN 60999 a x b; ø	2.8 mm x 2.4 mm		

DIN IEC rating data

Rated current, min. No. of poles (Tu=20°C)	19 A	Rated current, max. No. of poles (Tu=20°C)	15.5 A
Rated current, no. of poles (Tu=40°C), min.	16 A	Rated current, no. of poles (Tu=40°C), max.	13 A
Rated voltage for overvoltage class/pollution severity II/2	400 V	Rated voltage for overvoltage class/pollution severity III/2	320 V
Rated voltage at overvoltage category/pollution degree III/3	250 V	Rated impulse withstand voltage for overvoltage class/pollution severity II/2	4 kV
Rated impulse withstand voltage for overvoltage class/pollution severity III/2	4 kV	Rated impulse withstand voltage for overvoltage class/pollution severity III/3	4 kV
Short-time withstand current resistance	3 x 1s with 120 A		

CSA rating data

Rated voltage (Use group B)	300 V	Rated current (use group B)	10 A
Rated voltage (Use group C)	50 V	Rated voltage (use group D)	300 V
Rated current (use group D)	10 A	Wire cross-section, AWG, min.	AWG 26
Wire cross-section, AWG, max.	AWG 12		

UL 1059 rating data

Rated voltage (use group B)	300 V	Rated current (use group B)	10 A
Rated voltage (use group C)	50 V	Rated voltage (use group D)	300 V
Rated current (use group D)	10 A	Wire cross-section, AWG, min.	AWG 26
Wire cross-section, AWG, max.	AWG 12		

Creation date July 20, 2010 9:17:08 PM CEST

Datasheet**System pitch 5.08 mm (0.200 inch)
BLZP 5.08/16/180 SN OR BX****Weidmüller Interface GmbH & Co. KG**
Klingenbergstraße 16
D-32758 Detmold
Germany
Fon: +49 5231 14-0
Fax: +49 5231 14-2083
www.weidmueller.com**Technical data****Approvals**

Approvals institutes	CURUS
----------------------	-------

Classifications

eClass 6.0	27-26-07-08
------------	-------------

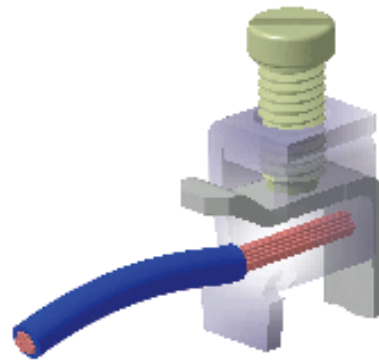
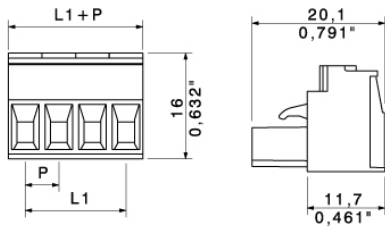
Notes

Notes	<ul style="list-style-type: none">• Additional colours on request• Rated current related to rated cross-section and min. No. of poles.• Wire end ferrule without plastic collar to DIN 46228 pt 1• Wire end ferrule with plastic collar to DIN 46228 pt 4• P on drg. = pitch• Rated data refer only to the component itself. Clearance and creepage distances to other components are to be designed in accordance with the relevant application standards.
-------	------------------------------------------------------------------------------------------------------------------------------------------------------------------------------------------------------------------------------------------------------------------------------------------------------------------------------------------------------------------------------------------------------------------------------------------------------------------------------------------------------------------------

Datasheet

System pitch 5.08 mm (0.200 inch)
BLZP 5.08/16/180 SN OR BX

Weidmüller Interface GmbH & Co. KG
Klingenbergstraße 16
D-32758 Detmold
Germany
Fon: +49 5231 14-0
Fax: +49 5231 14-2083
www.weidmueller.com

Drawings

System pitch 5.08 mm (0.200 inch) BLZP 5.08/16/180 SN OR BX

Weidmüller Interface GmbH & Co. KG
 Klingenbergstraße 16
 D-32758 Detmold
 Germany
 Fon: +49 5231 14-0
 Fax: +49 5231 14-2083
 www.weidmueller.com

Counterpart

SL 5.08/90



Male connectors with 90° outlet direction. The solder pin length is optimised for wave flow soldering. The male connectors provide space for labelling and can be coded. Packed in cardboard box.

- 400 V (IEC) / 300 V (UL)
- 18 A (IEC) / 15 A (UL)

General ordering data

Order No.	Part designation	Version	GTIN (EAN)	Qty.	Packaging
1509460000	SL 5.08/16/90 3.2SN OR BX	PCB plug-in connector, male header, 5.08 mm, No. of poles: 16, 90°, Solder pin length: 3.2 mm, tinned, Orange, Solder connection, Box	4008190147464	50 pc(s).	Box

SLD 5.08/90G



2-tier male connector with parallel pin arrangement. The solder pin length is optimised for wave flow soldering. The male connectors provide space for labelling and can be coded. Packed in cardboard box.

- 400 V (IEC) / 300 V (UL)
- 11 A (IEC) / 10 A (UL)

General ordering data

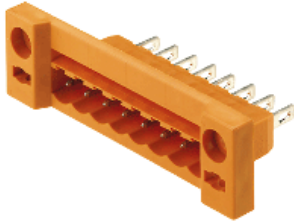
Order No.	Part designation	Version	GTIN (EAN)	Qty.	Packaging
1601930000	SLD 5.08/32/90G 3.2SN OR BX	PCB plug-in connector, male header, 5.08 mm, No. of poles: 32, 90°, Solder pin length: 3.2 mm, tinned, Orange, Solder connection, Box	4008190067779	10 pc(s).	Box

System pitch 5.08 mm (0.200 inch) BLZP 5.08/16/180 SN OR BX

Weidmüller Interface GmbH & Co. KG
 Klingenbergstraße 16
 D-32758 Detmold
 Germany
 Fon: +49 5231 14-0
 Fax: +49 5231 14-2083
 www.weidmueller.com

Counterpart

SLDF 5.08



Male connector for through-panel mounting with optional locking function. Internal connection as flat-blade or solder connection. These male connectors provide space for labelling and can be coded. Packed in cardboard box.

- 400 V (IEC) / 300 V (UL)
- 15 A (IEC) / 10 A (UL)

General ordering data

Order No.	Part designation	Version	GTIN (EAN)	Qty.	Packaging
1599270000	SLDF 5.08 L/F 16 SN OR	PCB plug-in connector, male header, 5.08 mm, No. of poles: 16, 180°, Clamping range, max.: , Box	4008190066826	50 pc(s).	Box

SL-SMT 5.08/180G Box



High-temperature-resistant male connector, packed in box or tape. In tape with 1.5 mm solder pin optimised for automatic assembly. 3.2 mm solder pin suitable for reflow and wave soldering. These male connectors can be labelled and coded.

- 400 V (IEC) / 300 V (UL)
- 19 A (IEC) / 15 A (UL)

General ordering data

Order No.	Part designation	Version	GTIN (EAN)	Qty.	Packaging
1776272001	SL-SMT 5.08/16/180G 1.5SN BK BX	PCB plug-in connector, male header, 5.08 mm, No. of poles: 16, 180°, Solder pin length: 1.5 mm, tinned, black, Reflow solder connection, Box	4032248159055	50 pc(s).	Box
1838350000	SL-SMT 5.08/16/180G 3.2SN BK BX	PCB plug-in connector, male header, 5.08 mm, No. of poles: 16, 180°, Solder pin length: 3.2 mm, tinned, black, Reflow solder connection, Box	4032248348411	50 pc(s).	Box

System pitch 5.08 mm (0.200 inch) BLZP 5.08/16/180 SN OR BX

Weidmüller Interface GmbH & Co. KG
 Klingenbergstraße 16
 D-32758 Detmold
 Germany
 Fon: +49 5231 14-0
 Fax: +49 5231 14-2083
 www.weidmueller.com

Counterpart

SL-SMT 5.08/90G Box



High-temperature-resistant male connector, packed in box or tape. In tape with 1.5 mm solder pin optimised for automatic assembly. 3.2 mm solder pin suitable for reflow and wave soldering. These male connectors can be labelled and coded.

- 400 V (IEC) / 300 V (UL)
- 19 A (IEC) / 15 A (UL)

General ordering data

Order No.	Part designation	Version	GTIN (EAN)	Qty.	Packaging
1780320000	SL-SMT 5.08/16/90G 3.2SN BK BX	PCB plug-in connector, male header, 5.08 mm, No. of poles: 16, 90°, Solder pin length: 3.2 mm, tinned, black, Reflow solder connection, Box	4032248165643	50 pc(s).	Box
1775142001	SL-SMT 5.08/16/90G 1.5SN BK BX	PCB plug-in connector, male header, 5.08 mm, No. of poles: 16, 90°, Solder pin length: 1.5 mm, tinned, black, Reflow solder connection, Box	4032248156719	50 pc(s).	Box

SL-SMT 5.08/180 Box



High-temperature-resistant, straight, open ended male connector. Packed in box or tape. In tape with 1.5 mm solder pin optimised for automatic assembly. 3.2 mm solder pin suitable for reflow and wave soldering. These male connectors can be labelled and coded.

- 400 V (IEC) / 300 V (UL)
- 19 A (IEC) / 15 A (UL)

General ordering data

Order No.	Part designation	Version	GTIN (EAN)	Qty.	Packaging
1838120000	SL-SMT 5.08/16/180 3.2SN BK BX	PCB plug-in connector, male header, 5.08 mm, No. of poles: 16, 180°, Solder pin length: 3.2 mm, tinned, black, Reflow solder connection, Box	4032248348183	50 pc(s).	Box
1775742001	SL-SMT 5.08/16/180 1.5SN BK BX	PCB plug-in connector, male header, 5.08 mm, No. of poles: 16, 180°, Solder pin length: 1.5 mm, tinned, black, Reflow solder connection, Box	4032248158393	50 pc(s).	Box

System pitch 5.08 mm (0.200 inch) BLZP 5.08/16/180 SN OR BX

Weidmüller Interface GmbH & Co. KG
 Klingenbergstraße 16
 D-32758 Detmold
 Germany
 Fon: +49 5231 14-0
 Fax: +49 5231 14-2083
 www.weidmueller.com

Counterpart

SL 5.08/180



Male connectors with straight outlet direction. The solder pin length is optimised for wave flow soldering. The male connectors provide space for labelling and can be coded. Packed in cardboard box.

- 400 V (IEC) / 300 V (UL)
- 18 A (IEC) / 15 A (UL)

General ordering data

Order No.	Part designation	Version	GTIN (EAN)	Qty.	Packaging
1518660000	SL 5.08/16/180 3.2 SN OR BX	PCB plug-in connector, male header, 5.08 mm, No. of poles: 16, 180°, Solder pin length: 3.2 mm, tinned, Orange, Solder connection, Box	4008190083304	50 pc(s).	Box

SL 5.08/135



Male connectors with 135° outlet direction. The solder pin length is optimised for wave flow soldering. The male connectors provide space for labelling and can be coded. Packed in cardboard box.

- 400 V (IEC) / 300 V (UL)
- 17 A (IEC) / 15 A (UL)

General ordering data

Order No.	Part designation	Version	GTIN (EAN)	Qty.	Packaging
1603200000	SL 5.08/16/135 3.2SN OR BX	PCB plug-in connector, male header, 5.08 mm, No. of poles: 16, 135°, Solder pin length: 3.2 mm, tinned, Orange, Solder connection, Box	4008190123635	50 pc(s).	Box

System pitch 5.08 mm (0.200 inch) BLZP 5.08/16/180 SN OR BX

Weidmüller Interface GmbH & Co. KG
 Klingenbergstraße 16
 D-32758 Detmold
 Germany
 Fon: +49 5231 14-0
 Fax: +49 5231 14-2083
 www.weidmueller.com

Counterpart

SL-SMT 5.08/90 Box



High-temperature-resistant, 90° angled, open male connector. Packed in box or tape. In tape with 1.5 mm solder pin optimised for automatic assembly. 3.2 mm solder pin suitable for reflow and wave soldering. These male connectors can be labelled and coded.

- 400 V (IEC) / 300 V (UL)
- 19 A (IEC) / 15 A (UL)

General ordering data

Order No.	Part designation	Version	GTIN (EAN)	Qty.	Packaging
1774902001	SL-SMT 5.08/16/90 1.5SN BK BX	PCB plug-in connector, male header, 5.08 mm, No. of poles: 16, 90°, Solder pin length: 1.5 mm, tinned, black, Reflow solder connection, Box	4032248155842	50 pc(s).	Box
1780090000	SL-SMT 5.08/16/90 3.2SN BK BX	PCB plug-in connector, male header, 5.08 mm, No. of poles: 16, 90°, Solder pin length: 3.2 mm, tinned, black, Reflow solder connection, Box	4032248165414	50 pc(s).	Box

SLD 5.08/180G



2-tier male connector with parallel pin arrangement. The solder pin length is optimised for wave flow soldering. The male connectors provide space for labelling and can be coded. Packed in cardboard box.

- 400 V (IEC) / 300 V (UL)
- 11 A (IEC) / 10 A (UL)

General ordering data

Order No.	Part designation	Version	GTIN (EAN)	Qty.	Packaging
1602530000	SLD 5.08/32/180G 3.2SN OR BX	PCB plug-in connector, male header, 5.08 mm, No. of poles: 32, 180°, Solder pin length: 3.2 mm, tinned, Orange, Solder connection, Box	4008190071387	10 pc(s).	Box

Datasheet

**System pitch 5.08 mm (0.200 inch)
BLZP 5.08/16/180 SN OR BX**

Weidmüller Interface GmbH & Co. KG
Klingenbergstraße 16
D-32758 Detmold
Germany
Fon: +49 5231 14-0
Fax: +49 5231 14-2083
www.weidmueller.com

Counterpart

SL 5.00/90



Male connectors with 90° outlet direction. The solder pin length is optimised for wave flow soldering. The male connectors provide space for labelling and can be coded. Packed in cardboard box.

- 400 V (IEC) / 300 V (UL)
- 18 A (IEC) / 15 A (UL)

General ordering data

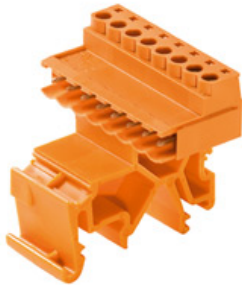
Order No.	Part designation	Version	GTIN (EAN)	Qty.	Packaging
1571260000	SL 5.00/16/90 3.2SN OR BX	PCB plug-in connector, male header, 5 mm, No. of poles: 16, 90°, Solder pin length: 3.2 mm, tinned, Orange, Solder connection, Box	4008190136192	50 pc(s).	Box

System pitch 5.08 mm (0.200 inch) BLZP 5.08/16/180 SN OR BX

Weidmüller Interface GmbH & Co. KG
 Klingenbergstraße 16
 D-32758 Detmold
 Germany
 Fon: +49 5231 14-0
 Fax: +49 5231 14-2083
 www.weidmueller.com

Counterpart

SLS 5.08TB KF35



Male connector with screw clamping yoke connection for connecting conductors. Clip-on feet for mounting on terminal rail. The male connectors provide space for labelling and can be coded. Packed in cardboard box.

- 0.20 - 2.5 mm² (IEC) / 26 - 12 AWG (UL)
- 400 V (IEC) / 300 V (UL)
- 21.5 A (IEC) / 15 A (UL)

General ordering data

Order No.	Part designation	Version	GTIN (EAN)	Qty.	Packaging
1846180000	SLS 5.08/16/180TB KF SN OR BX	PCB plug-in connector, male plug, 5.08 mm, No. of poles: 16, 180°, Clamping yoke connection, Clamping range, max.: 3.31 mm ² , Box	4032248362462	5 pc(s).	Box

SLZF 5.08/180FI



Male connector with tension clamp connection for connecting conductors. The male connectors provide space for labelling and can be coded. Packed in cardboard box.

- 0.20 - 2.5 mm² (IEC) / 26 - 14 AWG (UL)
- 400 V (IEC) / 300 V (UL)
- 23 A (IEC) / 15 A (UL)

General ordering data

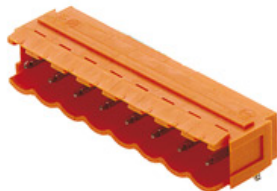
Order No.	Part designation	Version	GTIN (EAN)	Qty.	Packaging
1846650000	SLZF 5.08/16/180FI SN OR BX	PCB plug-in connector, male plug, 5.08 mm, No. of poles: 16, 180°, Tension clamp connection, Clamping range, max.: 3.31 mm ² , Box	4032248362950	50 pc(s).	Box

System pitch 5.08 mm (0.200 inch) BLZP 5.08/16/180 SN OR BX

Weidmüller Interface GmbH & Co. KG
 Klingenbergstraße 16
 D-32758 Detmold
 Germany
 Fon: +49 5231 14-0
 Fax: +49 5231 14-2083
 www.weidmueller.com

Counterpart

SL 5.08/90B



Male connectors with 90° outlet direction. The solder pin length is optimised for wave flow soldering. The male connectors provide space for labelling and can be coded. Packed in cardboard box.

- 400 V (IEC) / 300 V (UL)
- 18 A (IEC) / 15 A (UL)

General ordering data

Order No.	Part designation	Version	GTIN (EAN)	Qty.	Packaging
1511760000	SL 5.08/16/90B 3.2SN OR BX	PCB plug-in connector, male header, 5.08 mm, No. of poles: 16, 90°, Solder pin length: 3.2 mm, tinned, Orange, Solder connection, Box	4008190020552	50 pc(s).	Box

SL-SMT 5.08/180LF Box



High-temperature-resistant male connector, packed in box or tape. In tape with 1.5 mm solder pin optimised for automatic assembly. 3.2 mm solder pin suitable for reflow and wave soldering. These male connectors can be labelled and coded.

- 400 V (IEC) / 300 V (UL)
- 19 A (IEC) / 15 A (UL)

General ordering data

Order No.	Part designation	Version	GTIN (EAN)	Qty.	Packaging
1776502001	SL-SMT 5.08/16/180LF 1.5SN BK BX	PCB plug-in connector, male header, 5.08 mm, No. of poles: 16, 180°, Solder pin length: 1.5 mm, tinned, black, Reflow solder connection, Box	4032248159383	50 pc(s).	Box
1838580000	SL-SMT 5.08/16/180LF 3.2SN BK BX	PCB plug-in connector, male header, 5.08 mm, No. of poles: 16, 180°, Solder pin length: 3.2 mm, tinned, black, Reflow solder connection, Box	4032248348640	50 pc(s).	Box

System pitch 5.08 mm (0.200 inch) BLZF 5.08/16/180 SN OR BX

Weidmüller Interface GmbH & Co. KG
 Klingenbergstraße 16
 D-32758 Detmold
 Germany
 Fon: +49 5231 14-0
 Fax: +49 5231 14-2083
 www.weidmueller.com

Counterpart

SLZF 5.08/270B



Male connector with tension clamp connection for connecting conductors. The male connectors provide space for labelling and can be coded. Packed in cardboard box.

- 0.20 - 2.5 mm² (IEC) / 26 - 14 AWG (UL)
- 400 V (IEC) / 300 V (UL)
- 23 A (IEC) / 15 A (UL)

General ordering data

Order No.	Part designation	Version	GTIN (EAN)	Qty.	Packaging
1706280000	SLZF 5.08/16/270B SN OR BX	PCB plug-in connector, male plug, 5.08 mm, No. of poles: 16, 270°, Tension clamp connection, Clamping range, max.: 3.31 mm ² , Box	4032248197828	50 pc(s).	Box

SL-SMT 5.00/90LF Box



High-temperature-resistant male connector, packed in box or tape. In tape with 1.5 mm solder pin optimised for automatic assembly. 3.2 mm solder pin suitable for reflow and wave soldering. These male connectors can be labelled and coded.

- 400 V (IEC) / 300 V (UL)
- 19 A (IEC) / 15 A (UL)

General ordering data

Order No.	Part designation	Version	GTIN (EAN)	Qty.	Packaging
1797370000	SL-SMT 5.00/16/90LF 1.5SN BK BX	PCB plug-in connector, male header, 5 mm, No. of poles: 16, 90°, Solder pin length: 1.5 mm, tinned, black, Reflow solder connection, Box	4032248238156	50 pc(s).	Box
1840490000	SL-SMT 5.00/16/90LF 3.2SN BK BX	PCB plug-in connector, male header, 5 mm, No. of poles: 16, 90°, Solder pin length: 3.2 mm, tinned, black, Reflow solder connection, Box	4032248351336	50 pc(s).	Box

System pitch 5.08 mm (0.200 inch) BLZF 5.08/16/180 SN OR BX

Weidmüller Interface GmbH & Co. KG
 Klingenbergstraße 16
 D-32758 Detmold
 Germany
 Fon: +49 5231 14-0
 Fax: +49 5231 14-2083
 www.weidmueller.com

Counterpart

SLZF 5.08/180B



Male connector with tension clamp connection for connecting conductors. The male connectors provide space for labelling and can be coded. Packed in cardboard box.

- 0.20 - 2.5 mm² (IEC) / 26 - 14 AWG (UL)
- 400 V (IEC) / 300 V (UL)
- 23 A (IEC) / 15 A (UL)

General ordering data

Order No.	Part designation	Version	GTIN (EAN)	Qty.	Packaging
1710350000	SLZF 5.08/16/180B SN OR BX	PCB plug-in connector, male plug, 5.08 mm, No. of poles: 16, 180°, Tension clamp connection, Clamping range, max.: 3.31 mm ² , Box	4008190319663	50 pc(s).	Box

SLDV-THR 5.08/180F



High-temperature-resistant, 2-tier, laterally offset male connector with flange or solder flange. 1.5 mm solder pin suitable for reflow soldering. 3.2 mm solder pin suitable for reflow and wave soldering. These male connectors can be labelled and coded. Packed in cardboard box.

- 400 V (IEC) / 300 V (UL)
- 15 A (IEC) / 10 A (UL)

General ordering data

Order No.	Part designation	Version	GTIN (EAN)	Qty.	Packaging
1866330000	SLDV-THR 5.08/32/180F 3.2SN BK BX	PCB plug-in connector, male header, 5.08 mm, No. of poles: 32, 180°, Solder pin length: 3.2 mm, tinned, black, Reflow solder connection, Box	4032248470457	10 pc(s).	Box
1881330000	SLDV-THR 5.08/32/180F 1.5SN BK BX	PCB plug-in connector, male header, 5.08 mm, No. of poles: 32, 180°, Solder pin length: 1.5 mm, tinned, black, Reflow solder connection, Box	4032248482634	10 pc(s).	Box

System pitch 5.08 mm (0.200 inch) BLZP 5.08/16/180 SN OR BX

Weidmüller Interface GmbH & Co. KG
 Klingenbergstraße 16
 D-32758 Detmold
 Germany
 Fon: +49 5231 14-0
 Fax: +49 5231 14-2083
 www.weidmueller.com

Counterpart

SLS 5.08TB RF15



Male connector with screw clamping yoke connection for connecting conductors. Clip-on feet for mounting on terminal rail. The male connectors provide space for labelling and can be coded. Packed in cardboard box.

- 0.20 - 2.5 mm² (IEC) / 26 - 12 AWG (UL)
- 400 V (IEC) / 300 V (UL)
- 21.5 A (IEC) / 15 A (UL)

General ordering data

Order No.	Part designation	Version	GTIN (EAN)	Qty.	Packaging
1846100000	SLS 5.08/16/180TB RF15 SN OR BX	PCB plug-in connector, male plug, 5.08 mm, No. of poles: 16, 180°, Clamping yoke connection, Clamping range, max.: 3.31 mm ² , Box	4032248362387	5 pc(s).	Box

SL 5.08/180B



Male connectors with straight outlet direction. The solder pin length is optimised for wave flow soldering. The male connectors provide space for labelling and can be coded. Packed in cardboard box.

- 400 V (IEC) / 300 V (UL)
- 18 A (IEC) / 15 A (UL)

General ordering data

Order No.	Part designation	Version	GTIN (EAN)	Qty.	Packaging
1520960000	SL 5.08/16/180B 3.2 SN OR BX	PCB plug-in connector, male header, 5.08 mm, No. of poles: 16, 180°, Solder pin length: 3.2 mm, tinned, Orange, Solder connection, Box	4008190145149	50 pc(s).	Box

System pitch 5.08 mm (0.200 inch) BLZF 5.08/16/180 SN OR BX

Weidmüller Interface GmbH & Co. KG
 Klingenbergstraße 16
 D-32758 Detmold
 Germany
 Fon: +49 5231 14-0
 Fax: +49 5231 14-2083
 www.weidmueller.com

Counterpart

SLZF 5.08/180F



Male connector with tension clamp connection for connecting conductors. The male connectors provide space for labelling and can be coded. Packed in cardboard box.

- 0.20 - 2.5 mm² (IEC) / 26 - 14 AWG (UL)
- 400 V (IEC) / 300 V (UL)
- 23 A (IEC) / 15 A (UL)

General ordering data

Order No.	Part designation	Version	GTIN (EAN)	Qty.	Packaging
1847170000	SLZF 5.08/16/180F SN OR BX	PCB plug-in connector, male plug, 5.08 mm, No. of poles: 16, 180°, Tension clamp connection, Clamping range, max.: 3.31 mm ² , Box	4032248363254	50 pc(s).	Box

SLDV-THR 5.08/180FLF



High-temperature-resistant, 2-tier, laterally offset male connector with flange or solder flange. 1.5 mm solder pin suitable for reflow soldering. 3.2 mm solder pin suitable for reflow and wave soldering. These male connectors can be labelled and coded. Packed in cardboard box.

- 400 V (IEC) / 300 V (UL)
- 15 A (IEC) / 10 A (UL)

General ordering data

Order No.	Part designation	Version	GTIN (EAN)	Qty.	Packaging
1881510000	SLDV-THR 5.08/32/180FLF 1.5SN BK BX	PCB plug-in connector, male header, 5.08 mm, No. of poles: 32, 180°, Solder pin length: 1.5 mm, tinned, black, Reflow solder connection, Box	4032248482849	10 pc(s).	Box
1866320000	SLDV-THR 5.08/32/180FLF 3.2SN BK BX	PCB plug-in connector, male header, 5.08 mm, No. of poles: 32, 180°, Solder pin length: 3.2 mm, tinned, black, Reflow solder connection, Box	4032248470440	10 pc(s).	Box

System pitch 5.08 mm (0.200 inch) BLZP 5.08/16/180 SN OR BX

Weidmüller Interface GmbH & Co. KG
 Klingenbergstraße 16
 D-32758 Detmold
 Germany
 Fon: +49 5231 14-0
 Fax: +49 5231 14-2083
 www.weidmueller.com

Counterpart

SLS 5.08/180B



Male connector with screw clamping yoke connection for connecting conductors. The male connectors provide space for labelling and can be coded. Packed in cardboard box.

- 0.20 - 2.5 mm² (IEC) / 26 - 12 AWG (UL)
- 400 V (IEC) / 300 V (UL)
- 21.5 A (IEC) / 15 A (UL)

General ordering data

Order No.	Part designation	Version	GTIN (EAN)	Qty.	Packaging
1627380000	SLS 5.08/16/180B SN OR BX	PCB plug-in connector, male plug, 5.08 mm, No. of poles: 16, 180°, Clamping yoke connection, Clamping range, max.: 3.31 mm ² , Box	4008190199890	50 pc(s).	Box

SLZF 5.08/90B



Male connector with tension clamp connection for connecting conductors. The male connectors provide space for labelling and can be coded. Packed in cardboard box.

- 0.20 - 2.5 mm² (IEC) / 26 - 14 AWG (UL)
- 400 V (IEC) / 300 V (UL)
- 23 A (IEC) / 15 A (UL)

General ordering data

Order No.	Part designation	Version	GTIN (EAN)	Qty.	Packaging
1673690000	SLZF 5.08/16/90B SN OR BX	PCB plug-in connector, male plug, 5.08 mm, No. of poles: 16, 90°, Tension clamp connection, Clamping range, max.: 3.31 mm ² , Box	4008190435400	50 pc(s).	Box

System pitch 5.08 mm (0.200 inch) BLZP 5.08/16/180 SN OR BX

Weidmüller Interface GmbH & Co. KG
 Klingenbergstraße 16
 D-32758 Detmold
 Germany
 Fon: +49 5231 14-0
 Fax: +49 5231 14-2083
 www.weidmueller.com

Counterpart

SL-SMT 5.08/90F Box



High-temperature-resistant male connector, packed in box or tape. In tape with 1.5 mm solder pin optimised for automatic assembly. 3.2 mm solder pin suitable for reflow and wave soldering. These male connectors can be labelled and coded.

- 400 V (IEC) / 300 V (UL)
- 19 A (IEC) / 15 A (UL)

General ordering data

Order No.	Part designation	Version	GTIN (EAN)	Qty.	Packaging
1837770000	SL-SMT 5.08/16/90F 3.2SN BK BX	PCB plug-in connector, male header, 5.08 mm, No. of poles: 16, 90°, Solder pin length: 3.2 mm, tinned, black, Reflow solder connection, Box	4032248347582	50 pc(s).	Box

SL-SMT 5.08/90LF Box



High-temperature-resistant male connector, packed in box or tape. In tape with 1.5 mm solder pin optimised for automatic assembly. 3.2 mm solder pin suitable for reflow and wave soldering. These male connectors can be labelled and coded.

- 400 V (IEC) / 300 V (UL)
- 19 A (IEC) / 15 A (UL)

General ordering data

Order No.	Part designation	Version	GTIN (EAN)	Qty.	Packaging
1775372001	SL-SMT 5.08/16/90LF 1.5SN BK BX	PCB plug-in connector, male header, 5.08 mm, No. of poles: 16, 90°, Solder pin length: 1.5 mm, tinned, black, Reflow solder connection, Box	4032248157358	50 pc(s).	Box
1780570000	SL-SMT 5.08/16/90LF 3.2SN BK BX	PCB plug-in connector, male header, 5.08 mm, No. of poles: 16, 90°, Solder pin length: 3.2 mm, tinned, black, Reflow solder connection, Box	4032248165872	50 pc(s).	Box

System pitch 5.08 mm (0.200 inch) BLZP 5.08/16/180 SN OR BX

Weidmüller Interface GmbH & Co. KG
 Klingenbergstraße 16
 D-32758 Detmold
 Germany
 Fon: +49 5231 14-0
 Fax: +49 5231 14-2083
 www.weidmueller.com

Counterpart

SL 5.00/90B



Male connectors with 90° outlet direction. The solder pin length is optimised for wave flow soldering. The male connectors provide space for labelling and can be coded. Packed in cardboard box.

- 400 V (IEC) / 300 V (UL)
- 18 A (IEC) / 15 A (UL)

General ordering data

Order No.	Part designation	Version	GTIN (EAN)	Qty.	Packaging
1581000000	SL 5.00/16/90B 3.2SN OR BX	PCB plug-in connector, male header, 5 mm, No. of poles: 16, 90°, Solder pin length: 3.2 mm, tinned, Orange, Solder connection, Box	4008190145262	50 pc(s).	Box

SLS 5.08/180F



Male connector with screw clamping yoke connection for connecting conductors. The male connectors provide space for labelling and can be coded. Packed in cardboard box.

- 0.20 - 2.5 mm² (IEC) / 26 - 12 AWG (UL)
- 400 V (IEC) / 300 V (UL)
- 21.5 A (IEC) / 15 A (UL)

General ordering data

Order No.	Part designation	Version	GTIN (EAN)	Qty.	Packaging
1846500000	SLS 5.08/16/180F SN OR BX	PCB plug-in connector, male plug, 5.08 mm, No. of poles: 16, 180°, Clamping yoke connection, Clamping range, max.: 3.31 mm ² , Box	4032248362806	50 pc(s).	Box

System pitch 5.08 mm (0.200 inch) BLZP 5.08/16/180 SN OR BX

Weidmüller Interface GmbH & Co. KG
 Klingenbergstraße 16
 D-32758 Detmold
 Germany
 Fon: +49 5231 14-0
 Fax: +49 5231 14-2083
 www.weidmueller.com

Counterpart

SL 5.08/135B



Male connectors with 135° outlet direction. The solder pin length is optimised for wave flow soldering. The male connectors provide space for labelling and can be coded. Packed in cardboard box.

- 400 V (IEC) / 300 V (UL)
- 17 A (IEC) / 15 A (UL)

General ordering data

Order No.	Part designation	Version	GTIN (EAN)	Qty.	Packaging
1605670000	SL 5.08/16/135B 3.2SN OR BX	PCB plug-in connector, male header, 5.08 mm, No. of poles: 16, 135°, Solder pin length: 3.2 mm, tinned, Orange, Solder connection, Box	4008190153816	50 pc(s).	Box

SL-SMT 5.08/180F Box



High-temperature-resistant male connector, packed in box or tape. In tape with 1.5 mm solder pin optimised for automatic assembly. 3.2 mm solder pin suitable for reflow and wave soldering. These male connectors can be labelled and coded.

- 400 V (IEC) / 300 V (UL)
- 19 A (IEC) / 15 A (UL)

General ordering data

Order No.	Part designation	Version	GTIN (EAN)	Qty.	Packaging
1820640000	SL-SMT 5.08/16/180F 3.2SN BK BX	PCB plug-in connector, male header, 5.08 mm, No. of poles: 16, 180°, Solder pin length: 3.2 mm, tinned, black, Reflow solder connection, Box	4032248316601	50 pc(s).	Box

**System pitch 5.08 mm (0.200 inch)
BLZP 5.08/16/180 SN OR BX**

Weidmüller Interface GmbH & Co. KG
Klingenbergstraße 16
D-32758 Detmold
Germany
Fon: +49 5231 14-0
Fax: +49 5231 14-2083
www.weidmueller.com

Counterpart
SLT 5.08B


Male connectors with screw TOP connection for connecting conductors. The male connectors provide space for labelling and can be coded. Packed in cardboard box.

- 0.20 - 2.5 mm² (IEC) / 26 - 14 AWG (UL)
- 400 V (IEC) / 300 V (UL)
- 16 A (IEC) / 10 A (UL)

General ordering data

Order No.	Part designation	Version	GTIN (EAN)	Qty.	Packaging
1611850000	SLT 5.08/16/180B SN OR BX	PCB plug-in connector, male plug, 5.08 mm, No. of poles: 16, 180°, TOP connection, Clamping range, max.: 2.5 mm ² , Box	4008190192730	50 pc(s).	Box

SLS 5.08/180FI


Male connector with screw clamping yoke connection for connecting conductors. The male connectors provide space for labelling and can be coded. Packed in cardboard box.

- 0.20 - 2.5 mm² (IEC) / 26 - 12 AWG (UL)
- 400 V (IEC) / 300 V (UL)
- 21.5 A (IEC) / 15 A (UL)

General ordering data

Order No.	Part designation	Version	GTIN (EAN)	Qty.	Packaging
1846350000	SLS 5.08/16/180FI SN OR BX	PCB plug-in connector, male plug, 5.08 mm, No. of poles: 16, 180°, Clamping yoke connection, Clamping range, max.: 3.31 mm ² , Box	4032248362639	50 pc(s).	Box