



Chipsmall Limited consists of a professional team with an average of over 10 year of expertise in the distribution of electronic components. Based in Hongkong, we have already established firm and mutual-benefit business relationships with customers from,Europe,America and south Asia,supplying obsolete and hard-to-find components to meet their specific needs.

With the principle of "Quality Parts,Customers Priority,Honest Operation,and Considerate Service",our business mainly focus on the distribution of electronic components. Line cards we deal with include Microchip,ALPS,ROHM,Xilinx,Pulse,ON,Everlight and Freescale. Main products comprise IC,Modules,Potentiometer,IC Socket,Relay,Connector.Our parts cover such applications as commercial,industrial, and automotives areas.

We are looking forward to setting up business relationship with you and hope to provide you with the best service and solution. Let us make a better world for our industry!



## Contact us

Tel: +86-755-8981 8866 Fax: +86-755-8427 6832

Email & Skype: info@chipsmall.com Web: www.chipsmall.com

Address: A1208, Overseas Decoration Building, #122 Zhenhua RD., Futian, Shenzhen, China



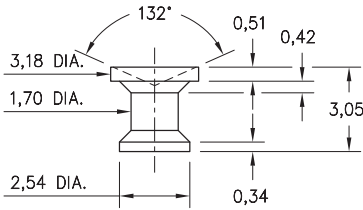
# MALE PCB PINS

## PRINTED CIRCUIT PINS

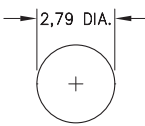
### 1943

1943-0-00-15-00-00-03-0

Target contact, surface mount with Concave face  
Also available on 16mm wide carrier tape:  
2,200 parts per 330mm reel.  
Order as: 1943-0-57-15-00-00-03-0



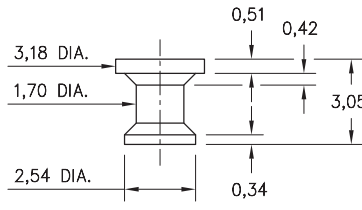
P.C.B. Layout



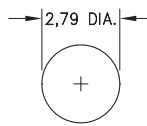
### 1944

1944-0-00-15-00-00-03-0

Target contact, surface mount  
Also available on 16mm wide carrier tape:  
2,200 parts per 330mm reel.  
Order as: 1944-0-57-15-00-00-03-0



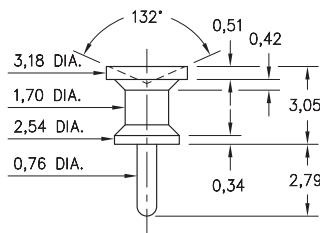
P.C.B. Layout



### 1945

1945-0-00-15-00-00-03-0

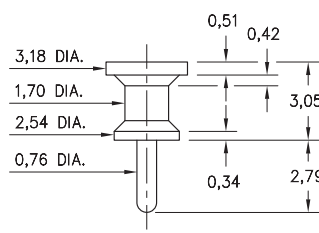
Target contact, Solder Tail  
Concave face for increased surface contact



### 1946

1946-0-00-15-00-00-03-0

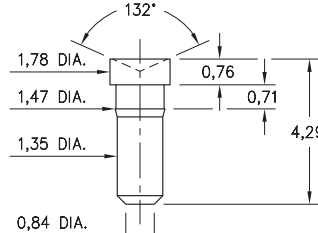
Target contact, Solder Tail



### 1947

1947-0-00-15-00-00-03-0

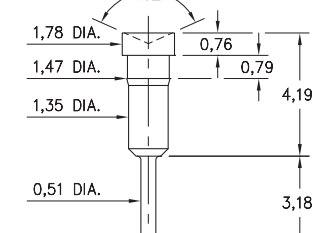
Target contact, surface mount  
Concave face for increased surface contact



### 1948

1948-0-00-15-00-00-03-0

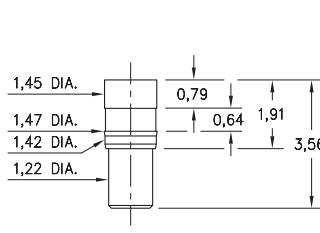
Target contact, Solder Tail  
Concave face for increased surface contact



### 1949

1949-0-00-15-00-00-03-0

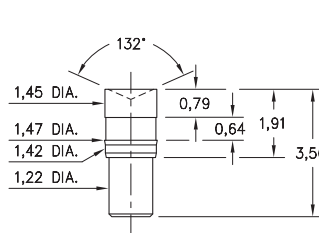
Target contact, surface mount



### 1950

1950-0-00-15-00-00-03-0

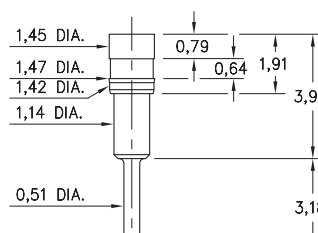
Target contact, surface mount  
Concave face for increased surface contact



### 1951

1951-0-00-15-00-00-03-0

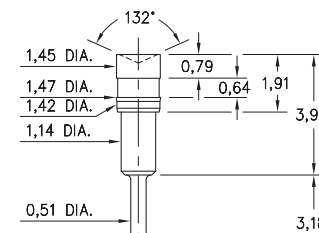
Target contact, Solder Tail



### 1952

1952-0-00-15-00-00-03-0

Target contact, Solder Tail  
Concave face for increased surface contact



#### SPECIFICATIONS:

**Pin Material:** Brass Alloy 360, 1/2 Hard  
(Except where noted)

**Dimensions:** Inches

**Tolerances On:** Lengths:  $\pm 0,13$   
Diameters:  $\pm 0,051$   
Angles:  $\pm 2^\circ$



ORDER CODE: 194X - 0 - 00 - 15 - 00 - 00 - 03 - 0

BASIC PART #

SPECIFY PIN FINISH:

◆ 15 0,25μm GOLD OVER NICKEL (RoHS)

