



Chipsmall Limited consists of a professional team with an average of over 10 year of expertise in the distribution of electronic components. Based in Hongkong, we have already established firm and mutual-benefit business relationships with customers from,Europe,America and south Asia,supplying obsolete and hard-to-find components to meet their specific needs.

With the principle of "Quality Parts,Customers Priority,Honest Operation,and Considerate Service",our business mainly focus on the distribution of electronic components. Line cards we deal with include Microchip,ALPS,ROHM,Xilinx,Pulse,ON,Everlight and Freescale. Main products comprise IC,Modules,Potentiometer,IC Socket,Relay,Connector.Our parts cover such applications as commercial,industrial, and automotives areas.

We are looking forward to setting up business relationship with you and hope to provide you with the best service and solution. Let us make a better world for our industry!



Contact us

Tel: +86-755-8981 8866 Fax: +86-755-8427 6832

Email & Skype: info@chipsmall.com Web: www.chipsmall.com

Address: A1208, Overseas Decoration Building, #122 Zhenhua RD., Futian, Shenzhen, China



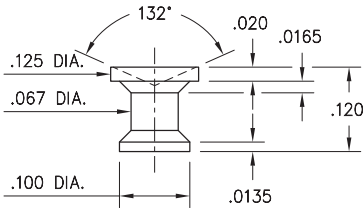
MALE PCB PINS

PRINTED CIRCUIT PINS

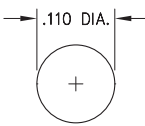
1943

1943-0-00-15-00-00-03-0

Target contact, surface mount with Concave face
Also available on 16mm wide carrier tape:
2,200 parts per 13" reel.
Order as: 1943-0-57-15-00-00-03-0



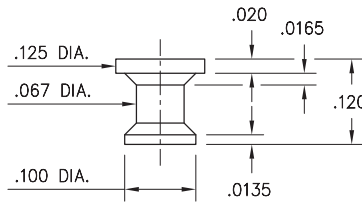
P.C.B. Layout



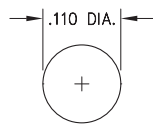
1944

1944-0-00-15-00-00-03-0

Target contact, surface mount
Also available on 16mm wide carrier tape:
2,200 parts per 13" reel.
Order as: 1944-0-57-15-00-00-03-0



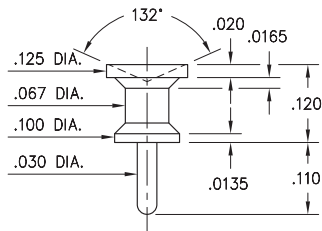
P.C.B. Layout



1945

1945-0-00-15-00-00-03-0

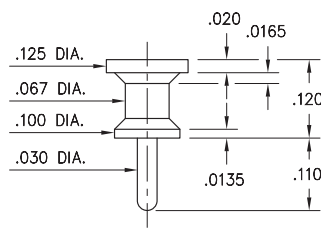
Target contact, Solder Tail
Concave face for increased surface contact



1946

1946-0-00-15-00-00-03-0

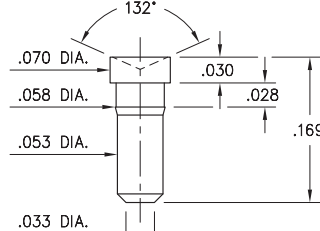
Target contact, Solder Tail



1947

1947-0-00-15-00-00-03-0

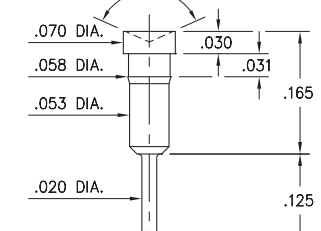
Target contact, surface mount
Concave face for increased surface contact



1948

1948-0-00-15-00-00-03-0

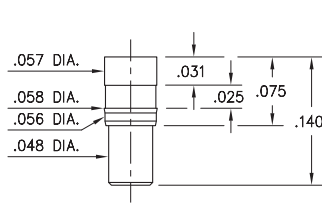
Target contact, Solder Tail
Concave face for increased surface contact



1949

1949-0-00-15-00-00-03-0

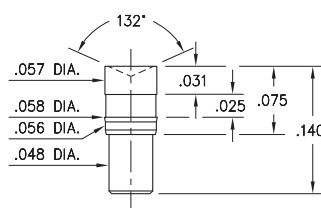
Target contact, surface mount



1950

1950-0-00-15-00-00-03-0

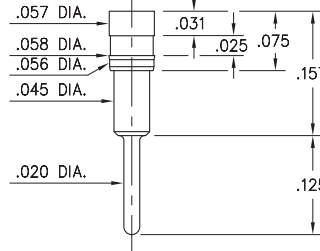
Target contact, surface mount
Concave face for increased surface contact



1951

1951-0-00-15-00-00-03-0

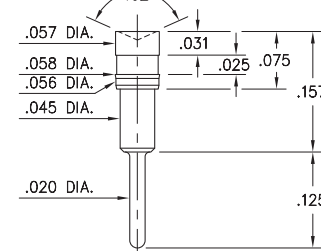
Target contact, Solder Tail



1952

1952-0-00-15-00-00-03-0

Target contact, Solder Tail
Concave face for increased surface contact



SPECIFICATIONS:

Pin Material: Brass Alloy 360, 1/2 Hard
(Except where noted)

Dimensions: Inches

Tolerances On: Lengths: $\pm .005$
Diameters: $\pm .002$
Angles: $\pm 2^\circ$



ORDER CODE: 194X - 0 - 00 - 15 - 00 - 00 - 03 - 0

BASIC PART #

SPECIFY PIN FINISH:

◆ 15 10 μ " GOLD OVER NICKEL (RoHS)

