



Chipsmall Limited consists of a professional team with an average of over 10 year of expertise in the distribution of electronic components. Based in Hongkong, we have already established firm and mutual-benefit business relationships with customers from,Europe,America and south Asia,supplying obsolete and hard-to-find components to meet their specific needs.

With the principle of “Quality Parts,Customers Priority,Honest Operation,and Considerate Service”,our business mainly focus on the distribution of electronic components. Line cards we deal with include Microchip,ALPS,ROHM,Xilinx,Pulse,ON,Everlight and Freescale. Main products comprise IC,Modules,Potentiometer,IC Socket,Relay,Connector.Our parts cover such applications as commercial,industrial, and automotives areas.

We are looking forward to setting up business relationship with you and hope to provide you with the best service and solution. Let us make a better world for our industry!



Contact us

Tel: +86-755-8981 8866 Fax: +86-755-8427 6832

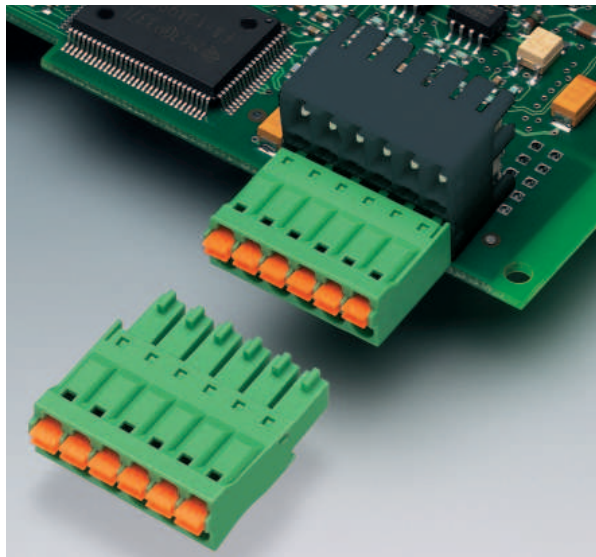
Email & Skype: info@chipsmall.com Web: www.chipsmall.com

Address: A1208, Overseas Decoration Building, #122 Zhenhua RD., Futian, Shenzhen, China



MINI COMBICON Double-Level Headers for Through Hole Reflow Processes, MCDN 1,5/... 3.5 mm Pitch

The MCDN(V) 1,5/... double-level headers feature minimum space requirement on the PCB, and at the same time, high contact density. It goes without saying that the headers are designed as reflow-capable components for the SMT process. The headers are available with two different pin lengths, horizontal or vertical plug-in direction, and with 2 to 20 positions. There is also a version with lateral self-locking flanges for engaging the connector to the header. LCP (Liquid Crystal Polymer), a material that has a high thermal stability in the reflow solder process, is used as insulating material. Peak temperatures above 260 °C are quite possible during the solder process.



COMBICON Select

The COMBICON search engine with CAD downloading

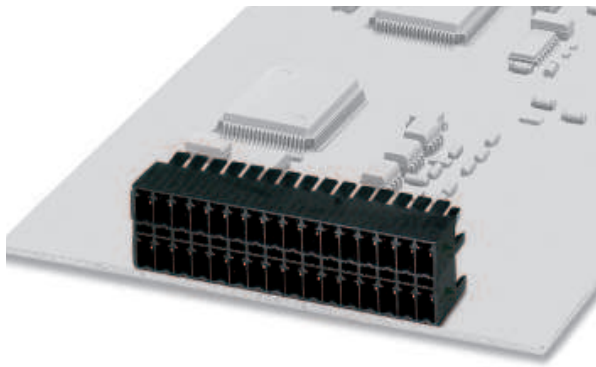


COMBICON Select – the printed circuit board connection software supports your workflow from the PCB and housing layout to the ordering process with:

- Systematic and fast selection of products
- Universal Internet aided engineering with extensive CAD downloading
- Easy-to-use e-shopping functions.

<http://select.phoenixcontact.com>

MCDN 1,5/...-G1-3,5 P14 THR 3.5 mm Pitch



Note:

COMBICON plug connectors may only be actuated in the no-load condition. If smaller loads need to be switched for operational reasons, experimental values are available on request.

Description	No. of pos.	Dim. a [mm]	Type	Order No.	Pcs./Pkt.
Double-level headers, plug-in direction horizontal to the printed circuit board, 3.5 mm pitch, pin length: 1.4 mm, color: black,	2	3.5	MCDN 1,5/2-G1-3,5 P14THR	19 53 90 7	50
	3	7	MCDN 1,5/3-G1-3,5 P14THR	19 53 92 3	
	4	10.5	MCDN 1,5/4-G1-3,5 P14THR	19 53 93 6	
	5	14	MCDN 1,5/5-G1-3,5 P14THR	19 53 94 9	
	6	17.5	MCDN 1,5/6-G1-3,5 P14THR	19 53 95 2	
	7	21	MCDN 1,5/7-G1-3,5 P14THR	19 53 96 5	
	8	24.5	MCDN 1,5/8-G1-3,5 P14THR	19 53 97 8	
	9	28	MCDN 1,5/9-G1-3,5 P14THR	19 53 98 1	
	10	31.5	MCDN 1,5/10-G1-3,5 P14THR	19 53 99 4	
	11	35	MCDN 1,5/11-G1-3,5 P14THR	19 54 00 3	
	12	38.5	MCDN 1,5/12-G1-3,5 P14THR	19 54 03 2	
	13	42	MCDN 1,5/13-G1-3,5 P14THR	19 54 04 5	
	14	45.5	MCDN 1,5/14-G1-3,5 P14THR	19 54 05 8	
	15	49	MCDN 1,5/15-G1-3,5 P14THR	19 54 06 1	
	16	52.5	MCDN 1,5/16-G1-3,5 P14THR	19 54 07 4	
	17	56	MCDN 1,5/17-G1-3,5 P14THR	19 54 08 7	
	18	59.5	MCDN 1,5/18-G1-3,5 P14THR	19 54 09 0	
	19	63	MCDN 1,5/19-G1-3,5 P14THR	19 54 10 0	
	20	66.5	MCDN 1,5/20-G1-3,5 P14THR	19 54 11 3	

(1) **Coding profile**, is inserted into the groove on the plug after the reflow/assembly process, insulating material: red



(2) **Marker card**, with 14 pcs. 10-section marker strips, white, self-adhesive, for 140 terminal blocks

Technical data

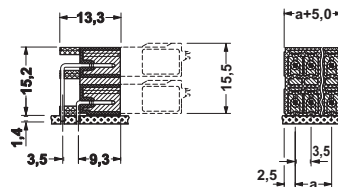
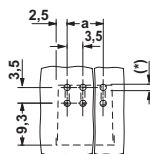
Dimensions		
Pitch		[mm]
Hole diameter		[mm]
Pin dimensions		[mm]x[mm]
Technical data in accordance with IEC/ DIN VDE		
Insulating material group		-
Surge voltage category / contamination class		-/-
Rated voltage		[V]
Rated surge voltage		[kV]
Nominal current / cross section		[A]/[mm²]
Maximum load current / cross section		[A]/[mm²]
Insulating material		
Inflammability class in acc. with UL 94		

CP-MSTB	17 34 63 4	100
SK 3,5/2,8 (see COMBICON catalog)		

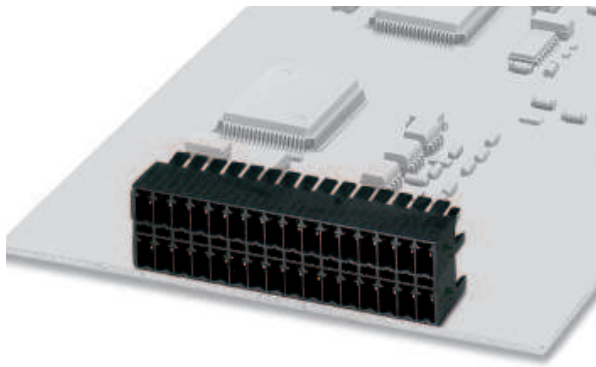
see description

3.5
≤ 8-pos. = 1.3 / > 8-pos. = 1.4
0.8 x 0.8

	III / 3	IIIa	II / 2
	160	200	250
	2.5	2.5	2.5
		6 / -	6 / -
		LCP	
		V0	



MCDN 1,5/...-G1-3,5 P26 THR 3.5 mm Pitch



Note:

COMBICON plug connectors may only be actuated in the no-load condition. If smaller loads need to be switched for operational reasons, experimental values are available on request.

Description	No. of pos.	Dim. a [mm]	Type	Order No.	Pcs./Pkt.
Double-level headers, plug-in direction horizontal to the printed circuit board, 3.5 mm pitch, pin length: 2.6 mm, color: black,	2	3.5	MCDN 1,5/2-G1-3,5 P26THR	19 53 71 6	50
	3	7	MCDN 1,5/3-G1-3,5 P26THR	19 53 72 9	
	4	10.5	MCDN 1,5/4-G1-3,5 P26THR	19 53 73 2	
	5	14	MCDN 1,5/5-G1-3,5 P26THR	19 53 74 5	
	6	17.5	MCDN 1,5/6-G1-3,5 P26THR	19 53 75 8	
	7	21	MCDN 1,5/7-G1-3,5 P26THR	19 53 76 1	
	8	24.5	MCDN 1,5/8-G1-3,5 P26THR	19 53 77 4	
	9	28	MCDN 1,5/9-G1-3,5 P26THR	19 53 78 7	
	10	31.5	MCDN 1,5/10-G1-3,5 P26THR	19 53 79 0	
	11	35	MCDN 1,5/11-G1-3,5 P26THR	19 53 80 3	
	12	38.5	MCDN 1,5/12-G1-3,5 P26THR	19 53 81 6	
	13	42	MCDN 1,5/13-G1-3,5 P26THR	19 53 82 9	
	14	45.5	MCDN 1,5/14-G1-3,5 P26THR	19 53 84 2	
	15	49	MCDN 1,5/15-G1-3,5 P26THR	19 53 85 5	
	16	52.5	MCDN 1,5/16-G1-3,5 P26THR	19 53 86 8	
	17	56	MCDN 1,5/17-G1-3,5 P26THR	19 53 87 1	
	18	59.5	MCDN 1,5/18-G1-3,5 P26THR	19 53 88 4	
	19	63	MCDN 1,5/19-G1-3,5 P26THR	19 53 89 7	
	20	66.5	MCDN 1,5/20-G1-3,5 P26THR	19 53 90 0	

(1) **Coding profile**, is inserted into the groove on the plug after the reflow/assembly process, insulating material: red



(2) **Marker card**, with 14 pcs. 10-section marker strips, white, self-adhesive, for 140 terminal blocks

Technical data

Dimensions		
Pitch		[mm]
Hole diameter		[mm]
Pin dimensions		[mm]x[mm]
Technical data in accordance with IEC/ DIN VDE		
Insulating material group		-
Surge voltage category / contamination class		-/-
Rated voltage		[V]
Rated surge voltage		[kV]
Nominal current / cross section		[A]/[mm²]
Maximum load current / cross section		[A]/[mm²]
Insulating material		
Inflammability class in acc. with UL 94		

CP-MSTB	17 34 63 4	100
SK 3,5/2,8 (see COMBICON catalog)		

see description

3.5

≤ 8-pos. = 1.3 / > 8-pos. = 1.4

0.8 x 0.8

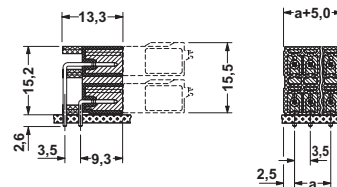
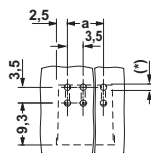
Technical data in accordance with IEC/ DIN VDE

Insulating material group		-
Surge voltage category / contamination class		-/-
Rated voltage		[V]
Rated surge voltage		[kV]
Nominal current / cross section		[A]/[mm²]
Maximum load current / cross section		[A]/[mm²]

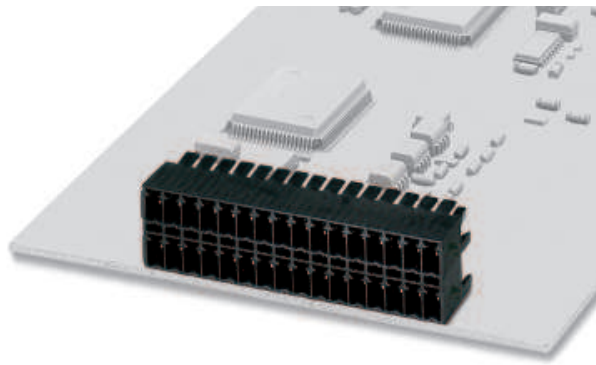
Insulating material

Inflammability class in acc. with UL 94

III / 3	IIIa	II / 2
160	200	250
2.5	2.5	2.5
6 / -	6 / -	6 / -
	LCP	
	V0	



MCDN 1,5/...-G1-3,5 RNP14 THR 3.5 mm Pitch



Note:

COMBICON plug connectors may only be actuated in the no-load condition. If smaller loads need to be switched for operational reasons, experimental values are available on request.

Description	No. of pos.	Dim. a [mm]	Type	Order No.	Pcs./Pkt.
Double-level headers, plug-in direction horizontal to the printed circuit board, 3.5 mm pitch, with engagement latch, pin length: 1.4 mm, color: black,	2	3.5	MCDN 1,5/2-G1-3,5 RNP14THR	19 53 20 8	50
	3	7	MCDN 1,5/3-G1-3,5 RNP14THR	19 53 21 1	
	4	10.5	MCDN 1,5/4-G1-3,5 RNP14THR	19 53 22 4	
	5	14	MCDN 1,5/5-G1-3,5 RNP14THR	19 53 23 7	
	6	17.5	MCDN 1,5/6-G1-3,5 RNP14THR	19 53 24 0	
	7	21	MCDN 1,5/7-G1-3,5 RNP14THR	19 53 25 3	
	8	24.5	MCDN 1,5/8-G1-3,5 RNP14THR	19 53 26 6	
	9	28	MCDN 1,5/9-G1-3,5 RNP14THR	19 53 27 9	
	10	31.5	MCDN 1,5/10-G1-3,5 RNP14THR	19 53 28 2	
	11	35	MCDN 1,5/11-G1-3,5 RNP14THR	19 53 29 5	
	12	38.5	MCDN 1,5/12-G1-3,5 RNP14THR	19 53 30 5	
	13	42	MCDN 1,5/13-G1-3,5 RNP14THR	19 53 31 8	
	14	45.5	MCDN 1,5/14-G1-3,5 RNP14THR	19 53 32 1	
	15	49	MCDN 1,5/15-G1-3,5 RNP14THR	19 53 33 4	
	16	52.5	MCDN 1,5/16-G1-3,5 RNP14THR	19 53 35 0	
	17	56	MCDN 1,5/17-G1-3,5 RNP14THR	19 53 36 3	
	18	59.5	MCDN 1,5/18-G1-3,5 RNP14THR	19 53 37 6	
	19	63	MCDN 1,5/19-G1-3,5 RNP14THR	19 53 38 9	
	20	66.5	MCDN 1,5/20-G1-3,5 RNP14THR	19 53 39 2	

(1) **Coding profile**, is inserted into the groove on the plug after the reflow/assembly process, insulating material: red



(2) **Marker card**, with 14 pcs. 10-section marker strips, white, self-adhesive, for 140 terminal blocks

CP-MSTB	17 34 63 4	100
SK 3,5/2,8 (see COMBICON catalog)		

Technical data

Dimensions	
Pitch	[mm]
Hole diameter	[mm]
Pin dimensions	[mm]x[mm]

see description
3.5
≤ 8-pos. = 1.3 / > 8-pos. = 1.4
0.8 x 0.8

Technical data in accordance with IEC/ DIN VDE

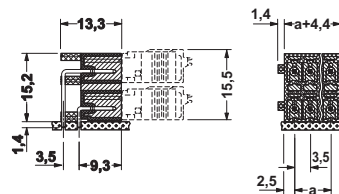
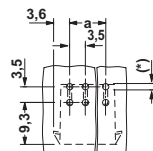
Insulating material group	-
Surge voltage category / contamination class	-/-
Rated voltage	[V]
Rated surge voltage	[kV]
Nominal current / cross section	[A]/[mm²]
Maximum load current / cross section	[A]/[mm²]

III / 3	IIIa	III / 2	II / 2
160	200	250	
2.5	2.5	2.5	
	6 / -		
	6 / -		

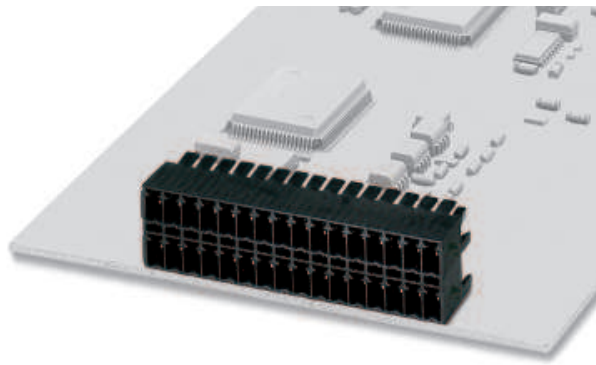
Insulating material

Inflammability class in acc. with UL 94

LCP
V0



MCDN 1,5/...-G1-3,5 RNP26 THR 3.5 mm Pitch



Note:

COMBICON plug connectors may only be actuated in the no-load condition. If smaller loads need to be switched for operational reasons, experimental values are available on request.

Description	No. of pos.	Dim. a [mm]	Type	Order No.	Pcs./Pkt.
Double-level headers, plug-in direction horizontal to the printed circuit board, 3.5 mm pitch, with engagement latch, pin length: 2.6 mm, color: black,	2	3.5	MCDN 1,5/2-G1-3,5 RNP26THR	19 53 40 2	50
	3	7	MCDN 1,5/3-G1-3,5 RNP26THR	19 53 41 5	
	4	10.5	MCDN 1,5/4-G1-3,5 RNP26THR	19 53 42 8	
	5	14	MCDN 1,5/5-G1-3,5 RNP26THR	19 53 55 4	
	6	17.5	MCDN 1,5/6-G1-3,5 RNP26THR	19 53 56 7	
	7	21	MCDN 1,5/7-G1-3,5 RNP26THR	19 53 57 0	
	8	24.5	MCDN 1,5/8-G1-3,5 RNP26THR	19 53 58 3	
	9	28	MCDN 1,5/9-G1-3,5 RNP26THR	19 53 59 6	
	10	31.5	MCDN 1,5/10-G1-3,5 RNP26THR	19 53 60 6	
	11	35	MCDN 1,5/11-G1-3,5 RNP26THR	19 53 61 9	
	12	38.5	MCDN 1,5/12-G1-3,5 RNP26THR	19 53 62 2	
	13	42	MCDN 1,5/13-G1-3,5 RNP26THR	19 53 63 5	
	14	45.5	MCDN 1,5/14-G1-3,5 RNP26THR	19 53 64 8	
	15	49	MCDN 1,5/15-G1-3,5 RNP26THR	19 53 65 1	
	16	52.5	MCDN 1,5/16-G1-3,5 RNP26THR	19 53 66 4	
	17	56	MCDN 1,5/17-G1-3,5 RNP26THR	19 53 67 7	
	18	59.5	MCDN 1,5/18-G1-3,5 RNP26THR	19 53 68 0	
	19	63	MCDN 1,5/19-G1-3,5 RNP26THR	19 53 69 3	
	20	66.5	MCDN 1,5/20-G1-3,5 RNP26THR	19 53 70 3	

(1) **Coding profile**, is inserted into the groove on the plug after the reflow/assembly process, insulating material: red



(2) **Marker card**, with 14 pcs. 10-section marker strips, white, self-adhesive, for 140 terminal blocks

Technical data

Dimensions	
Pitch	[mm]
Hole diameter	[mm]
Pin dimensions	[mm]x[mm]

Technical data in accordance with IEC/ DIN VDE

Insulating material group	-
Surge voltage category / contamination class	-/-
Rated voltage	[V]
Rated surge voltage	[kV]
Nominal current / cross section	[A]/[mm²]
Maximum load current / cross section	[A]/[mm²]

Insulating material

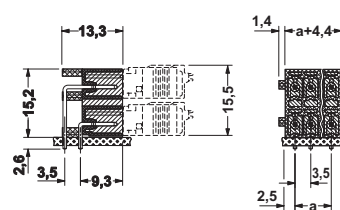
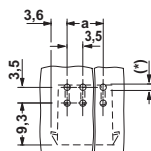
Inflammability class in acc. with UL 94

CP-MSTB	17 34 63 4	100
SK 3,5/2,8 (see COMBICON catalog)		

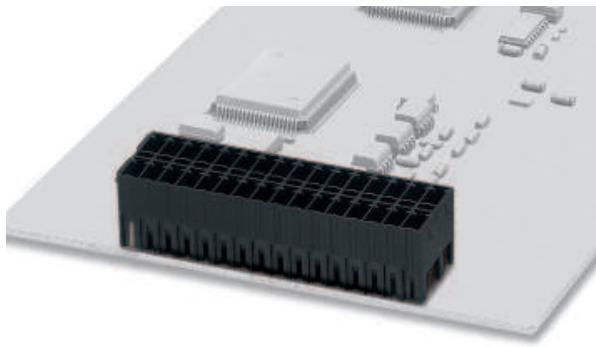
see description

3.5
≤ 8-pos. = 1.3 / > 8-pos. = 1.4
0.8 x 0.8

	IIIa	III / 2	II / 2
III / 3	160	200	250
2.5	6 / -	2.5	2.5
	6 / -		
	LCP		
	V0		



MCDNV 1,5/...-G1-3,5 P26 THR 3.5 mm Pitch



Note:

COMBICON plug connectors may only be actuated in the no-load condition. If smaller loads need to be switched for operational reasons, experimental values are available on request.

Description	No. of pos.	Dim. a [mm]	Type	Order No.	Pcs./Pkt.
Double-level headers, plug-in direction vertical to the printed circuit board, 3.5 mm pitch, pin length: 2.6 mm, color: black,	2	3.5	MCDNV 1,5/2-G1-3,5 P26THR	19 52 78 8	50
	3	7	MCDNV 1,5/3-G1-3,5 P26THR	19 52 79 1	
	4	10.5	MCDNV 1,5/4-G1-3,5 P26THR	19 52 80 1	
	5	14	MCDNV 1,5/5-G1-3,5 P26THR	19 52 81 4	
	6	17.5	MCDNV 1,5/6-G1-3,5 P26THR	19 52 82 7	
	7	21	MCDNV 1,5/7-G1-3,5 P26THR	19 52 83 0	
	8	24.5	MCDNV 1,5/8-G1-3,5 P26THR	19 52 84 3	
	9	28	MCDNV 1,5/9-G1-3,5 P26THR	19 52 85 6	
	10	31.5	MCDNV 1,5/10-G1-3,5 P26THR	19 52 86 9	
	11	35	MCDNV 1,5/11-G1-3,5 P26THR	19 52 87 2	
	12	38.5	MCDNV 1,5/12-G1-3,5 P26THR	19 52 88 5	
	13	42	MCDNV 1,5/13-G1-3,5 P26THR	19 52 89 8	
	14	45.5	MCDNV 1,5/14-G1-3,5 P26THR	19 52 90 8	
	15	49	MCDNV 1,5/15-G1-3,5 P26THR	19 52 91 1	
	16	52.5	MCDNV 1,5/16-G1-3,5 P26THR	19 52 92 4	
	17	56	MCDNV 1,5/17-G1-3,5 P26THR	19 52 93 7	
	18	59.5	MCDNV 1,5/18-G1-3,5 P26THR	19 52 94 0	
	19	63	MCDNV 1,5/19-G1-3,5 P26THR	19 52 95 3	
	20	66.5	MCDNV 1,5/20-G1-3,5 P26THR	19 52 96 6	

(1) **Coding profile**, is inserted into the groove on the plug after the reflow/assembly process, insulating material: red

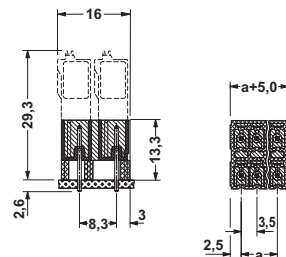
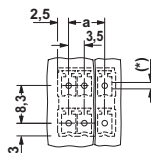


(2) **Marker card**, with 14 pcs. 10-section marker strips, white, self-adhesive, for 140 terminal blocks

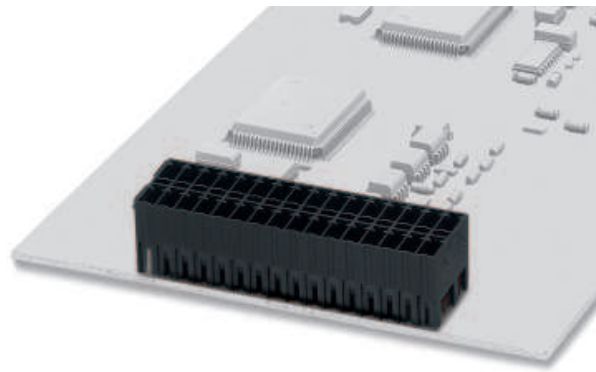
Technical data

Dimensions		
Pitch	[mm]	3.5
Hole diameter	[mm]	≤ 8-pos. = 1.3 / > 8-pos. = 1.4
Pin dimensions	[mm]x[mm]	0.8 x 0.8
Technical data in accordance with IEC/ DIN VDE		
Insulating material group	-	IIIa
Surge voltage category / contamination class	-/-	III / 3
Rated voltage	[V]	160
Rated surge voltage	[kV]	2.5
Nominal current / cross section	[A]/[mm²]	6 / -
Maximum load current / cross section	[A]/[mm²]	6 / -
Insulating material		LCP
Inflammability class in acc. with UL 94		V0

CP-MSTB	17 34 63 4	100
SK 3,5/2,8 (see COMBICON catalog)		



MCDNV 1,5/...-G1-3,5 RNP14 THR 3.5 mm Pitch



Note:

COMBICON plug connectors may only be actuated in the no-load condition. If smaller loads need to be switched for operational reasons, experimental values are available on request.

Description	No. of pos.	Dim. a [mm]	Type	Order No.	Pcs./Pkt.
Double-level headers, plug-in direction vertical to the printed circuit board, 3.5 mm pitch, with engagement latch, pin length: 1.4 mm, color: black,	2	3.5	MCDNV 1,5/2-G1-3,5 RNP14THR	19 52 50 0	50
	3	7	MCDNV 1,5/3-G1-3,5 RNP14THR	19 52 51 3	
	4	10.5	MCDNV 1,5/4-G1-3,5 RNP14THR	19 52 52 6	
	5	14	MCDNV 1,5/5-G1-3,5 RNP14THR	19 52 53 9	
	6	17.5	MCDNV 1,5/6-G1-3,5 RNP14THR	19 52 54 2	
	7	21	MCDNV 1,5/7-G1-3,5 RNP14THR	19 52 55 5	
	8	24.5	MCDNV 1,5/8-G1-3,5 RNP14THR	19 52 56 8	
	9	28	MCDNV 1,5/9-G1-3,5 RNP14THR	19 52 57 1	
	10	31.5	MCDNV 1,5/10-G1-3,5 RNP14THR	19 52 58 4	
	11	35	MCDNV 1,5/11-G1-3,5 RNP14THR	19 52 59 7	
	12	38.5	MCDNV 1,5/12-G1-3,5 RNP14THR	19 52 60 0	
	13	42	MCDNV 1,5/13-G1-3,5 RNP14THR	19 52 61 3	
	14	45.5	MCDNV 1,5/14-G1-3,5 RNP14THR	19 52 62 6	
	15	49	MCDNV 1,5/15-G1-3,5 RNP14THR	19 52 63 9	
	16	52.5	MCDNV 1,5/16-G1-3,5 RNP14THR	19 52 64 2	
	17	56	MCDNV 1,5/17-G1-3,5 RNP14THR	19 52 65 5	
	18	59.5	MCDNV 1,5/18-G1-3,5 RNP14THR	19 52 66 8	
	19	63	MCDNV 1,5/19-G1-3,5 RNP14THR	19 52 67 1	
	20	66.5	MCDNV 1,5/20-G1-3,5 RNP14THR	19 52 68 4	

(1) **Coding profile**, is inserted into the groove on the plug after the reflow/assembly process, insulating material: red



(2) **Marker card**, with 14 pcs. 10-section marker strips, white, self-adhesive, for 140 terminal blocks

Technical data

Dimensions	
Pitch	[mm]
Hole diameter	[mm]
Pin dimensions	[mm]x[mm]

Technical data in accordance with IEC/ DIN VDE

Insulating material group	-
Surge voltage category / contamination class	-/-
Rated voltage	[V]
Rated surge voltage	[kV]
Nominal current / cross section	[A]/[mm ²]
Maximum load current / cross section	[A]/[mm ²]

Insulating material

Inflammability class in acc. with UL 94

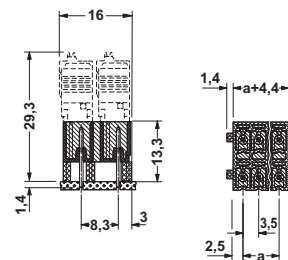
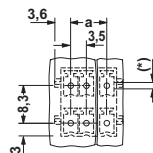
CP-MSTB	17 34 63 4	100
SK 3,5/2,8 (see COMBICON catalog)		

see description

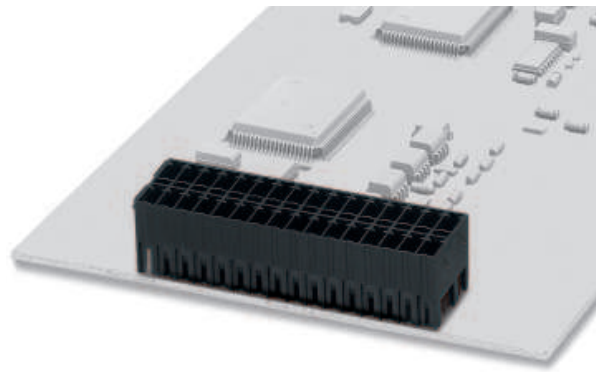
3.5
≤ 8-pos. = 1.3 / > 8-pos. = 1.4
0.8 x 0.8

	IIIa	III / 2	II / 2
III / 3	160	200	250
2.5	6 / -	2.5	2.5

6 / -
6 / -
LCP
V0



MCDNV 1,5/...-G1-3,5 RNP26 THR 3.5 mm Pitch



Note:

COMBICON plug connectors may only be actuated in the no-load condition. If smaller loads need to be switched for operational reasons, experimental values are available on request.

Description	No. of pos.	Dim. a [mm]	Type	Order No.	Pcs./Pkt.
Double-level headers, plug-in direction vertical to the printed circuit board, 3.5 mm pitch, with engagement latch, pin length: 2.6 mm, color: black,	2	3.5	MCDNV 1,5/2-G1-3,5 RNP26THR	19 52 45 8	50
	3	7	MCDNV 1,5/3-G1-3,5 RNP26THR	19 52 46 1	
	4	10.5	MCDNV 1,5/4-G1-3,5 RNP26THR	19 52 47 4	
	5	14	MCDNV 1,5/5-G1-3,5 RNP26THR	19 52 48 7	
	6	17.5	MCDNV 1,5/6-G1-3,5 RNP26THR	19 52 49 0	
	7	21	MCDNV 1,5/7-G1-3,5 RNP26THR	19 52 21 2	
	8	24.5	MCDNV 1,5/8-G1-3,5 RNP26THR	19 52 22 5	
	9	28	MCDNV 1,5/9-G1-3,5 RNP26THR	19 52 23 8	
	10	31.5	MCDNV 1,5/10-G1-3,5 RNP26THR	19 52 24 1	
	11	35	MCDNV 1,5/11-G1-3,5 RNP26THR	19 52 25 4	
	12	38.5	MCDNV 1,5/12-G1-3,5 RNP26THR	19 52 69 4	
	13	42	MCDNV 1,5/13-G1-3,5 RNP26THR	19 52 70 4	
	14	45.5	MCDNV 1,5/14-G1-3,5 RNP26THR	19 52 71 7	
	15	49	MCDNV 1,5/15-G1-3,5 RNP26THR	19 52 72 0	
	16	52.5	MCDNV 1,5/16-G1-3,5 RNP26THR	19 52 73 3	
	17	56	MCDNV 1,5/17-G1-3,5 RNP26THR	19 52 74 6	
	18	59.5	MCDNV 1,5/18-G1-3,5 RNP26THR	19 52 75 9	
	19	63	MCDNV 1,5/19-G1-3,5 RNP26THR	19 52 76 2	
	20	66.5	MCDNV 1,5/20-G1-3,5 RNP26THR	19 52 77 5	

(1) **Coding profile**, is inserted into the groove on the plug after the reflow/assembly process, insulating material: red



(2) **Marker card**, with 14 pcs. 10-section marker strips, white, self-adhesive, for 140 terminal blocks

CP-MSTB	17 34 63 4	100
SK 3,5/2,8 (see COMBICON catalog)		

Technical data

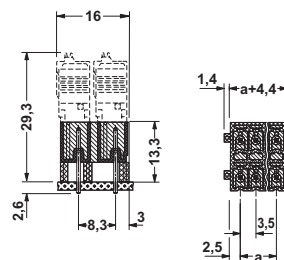
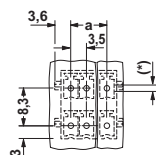
Dimensions	
Pitch	[mm] 3.5
Hole diameter	[mm] 1.3 / 1.4
Pin dimensions	[mm]x[mm] 0.8 x 0.8

Technical data in accordance with IEC/ DIN VDE

Insulating material group	-
Surge voltage category / contamination class	-/- III / 3 III / 2 II / 2
Rated voltage	[V] 160 200 250
Rated surge voltage	[kV] 2.5 2.5 2.5
Nominal current / cross section	[A]/[mm ²] 6 / - 6 / -
Maximum load current / cross section	[A]/[mm ²] 6 / - 6 / -

Insulating material

Inflammability class in acc. with UL 94 LCP V0



http://www.phoenixcontact.com

© Phoenix Contact 15.11.02 TNR: 5127580-02